



Innovation
that excites

2013 NV200™ COMPACT CARGO



ABOUT THIS PDF



Keep an eye out for this play button to watch video



Links are "click-able"

THERE'S EVEN MORE TO DISCOVER ABOUT NCV

Introducing the all-new iPad® NCV Showroom App.
Featuring in-depth product presentations, videos, full specifications and more.
Now available on the App Store. Be sure to download it today!



NISSAN Commercial Vehicles®

BUILT FOR THE WAY YOU WORK.



READY FOR BIG JOBS AND SMALL PARKING SPACES.

Introducing the Nissan NV200™ Compact Cargo, the right-size commercial vehicle for your business. It's got over 122 cubic feet of cargo space that's easily accessed by wide-opening 40/60 rear doors and a sliding door on each side. You can even fit a 40" x 48" pallet.¹ The cabin offers impressive comfort and security, with loads of thoughtful features that make it a convenient mobile office. It's the perfect size for getting around even the most crowded cities and fitting into tight parking spots and low garages, while its best-in-class city and combined fuel economy^{2,3} and advanced CVT transmission help deliver a low cost of ownership. Nissan NV200 Compact Cargo. **Nissan. Innovation that excites.™**

¹Cargo and load capacity limited by weight and distribution. Always secure all cargo. Heavy loading of the vehicle with cargo, especially on the roof, will affect the handling and stability of the vehicle. ²Ward's Small Van Market Segmentation. 2013 NV200 Compact Cargo vs. 2013 competitors. ³2013 EPA Fuel Economy Estimate 24 MPG city and 24 MPG combined. Actual mileage may vary with driving conditions – use for comparison only.



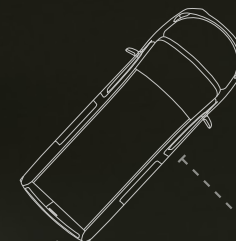
PINCHES PENNIES. TURNS ON A DIME.

With NV200 Compact Cargo's 2.0-L 4-cylinder and efficient Xtronic CVT[®] transmission, you get a smooth and powerful drive while keeping a watchful eye on the bottom line, with best-in-class city and combined ratings of 24 MPG.^{1,2} Add in responsive handling and excellent outward visibility, and NV200 Compact Cargo is as good at maneuvering in crowded urban environments as it is at avoiding big fuel bills.



36.7' TURNING DIAMETER

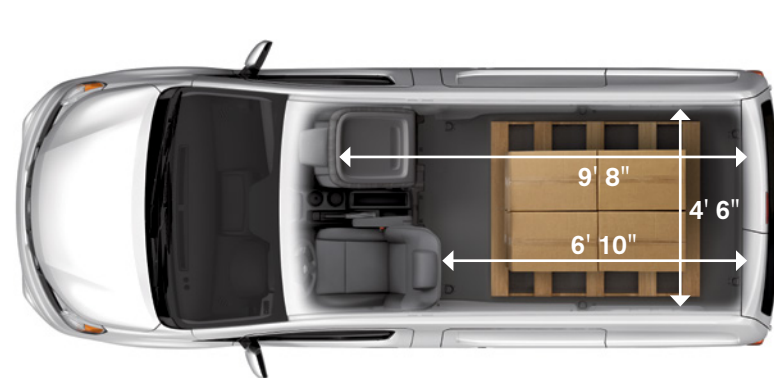
NV200's incredibly tight turning diameter helps you negotiate narrow streets and tight parking structures while letting you place the vehicle as close as possible to your drop-off locations.





CONVENIENT, CAPABLE AND SPACIOUS.

The NV200 Compact Cargo's smart design helps you create a commercial vehicle that works especially hard for the unique needs of your business. With easy access, a spacious interior, innovative packaging and upfitting potential, NV200 Compact Cargo is one smart business partner.



40/60 SPLIT REAR DOORS



A. Over 122 Cubic Feet – NV200 Compact Cargo gives you an all-access pass to 122.7 cubic feet of cargo. With a low load floor height of just 21.1", 40/60 split rear doors that open to 90° and 180°, and easy sliding doors on both sides, it's easy to maneuver even bulky and oversized packages.¹

B. Flat Wheel Wells – When it comes to efficiency, NV200 Compact Cargo makes every inch count. That's why you'll find the wheel wells have a compact and narrow design to maximize cargo room. The tops of the wheel wells were also flattened for easier stacking of boxes.

¹Cargo and load capacity limited by weight and distribution. Always secure all cargo. Heavy loading of the vehicle with cargo, especially on the roof, will affect the handling and stability of the vehicle.

C. Cargo Capability – To maximize cargo space, NV200 Compact Cargo features a flat cargo floor and minimal intrusion from the wheel wells. The result is impressive cargo room that's large enough to fit a 40" x 48" pallet or carry an item 9'8" long with the passenger seat folded down.¹



Floor-mounted D-Rings – Six available floor-mounted D-rings help keep your cargo locked down. With 180° of movement, securing packages is easy. They're also recessed into the floor, so they fold conveniently out of the way when not in use.

D. Integrated Reinforced Cargo-mounting Points – With 20 integrated interior cargo-mounting points for secure upfitting of cargo racks, partitions and bins, you're ready for work. Six exterior mounting points on the roof are ideal for mounting a ladder rack.¹ Adrian Steel, official upfitter of the NV200 Compact Cargo, offers several solutions to suit the needs of your business.



Available Bluetooth® connectivity

Available navigation with live weather updates

Wear-resistant patch

High seating position for visibility and comfort

Available USB input

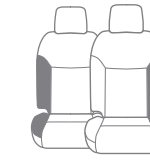


The available Technology Package includes navigation system with live traffic updates and a convenient RearView Monitor.^{1,2}

A BETTER WAY TO DRIVE. A SMARTER WAY TO WORK.



Flexible Center Console Storage



Wear-resistant Patches



Under-seat Sliding Drawer



Deep Cup Holders



Available rear power port



Extensive research went into the design of NV200 Compact Cargo's cabin to make it a better place to drive and a smarter place to work. The driver sits high, with excellent outside visibility. The transmission lever is mounted high up for an easy reach. Large outside mirrors feature a convex insert to help eliminate blind spots. Available heated mirrors are a real help on cold, frosty mornings.

The available Technology Package includes RearView Monitor¹ and NissanConnectSM with Navigation.^{2,3} From voice-activated navigation³ and audio to hands-free text messaging assistant,⁴ you stay connected in a smart way.

A. Flat folding seat and rear power – A natural multitasker, NV200 Compact Cargo converts easily into your mobile office, with a passenger seat that folds down to create a work desk, smart storage and easy-to-reach power outlets.

B. Convertible space and room for your stuff – Keeping things orderly always makes a good impression. NV200 Compact Cargo's center console is large enough to hold a laptop computer – it's even designed to hold hanging files. Thoughtful items like an under-seat sliding drawer on the passenger seat and deep cup holders mean everyday convenience, while wear-resistant bolsters and water-repellent seating help keep the interior looking good for years to come.

¹Parking aid/convenience feature. Cannot completely eliminate blind spots or warn of moving objects. May not detect every object. Always check surroundings before moving vehicle. Not a substitute for proper backing procedures. Always turn to check what is behind you before backing up. ²Never program while driving. GPS mapping may not be detailed in all areas or reflect current road regulations. ³Certain remote functions require compatible phone, not included with vehicle. Cellular network and vehicle services provided by independent companies not within Nissan's control. Cellular network not available in all areas. ⁴Certain connected vehicle services, including but not limited to Points of Interest and Send-to-Car, may require subscription and owner consent to activate. Should service provider terminate/restrict service, service may be suspended or terminated without notice or liability to Nissan and/or its agents. Nissan not responsible for any equipment replacement or upgrades, or associated costs, that may be required for continued operation due to service changes. Standard text rates, voice minutes, roaming charges and/or data usage may apply. ⁵Use the text messaging feature after stopping your vehicle in a safe location. If you have to use the feature while driving, exercise extreme caution at all times so full attention may be given to vehicle operation. The Bluetooth® word mark and logos are owned by Bluetooth, SIG, Inc. and any use of such marks by Nissan is under license. NavTraffic is a trademark of Sirius XM Radio Inc.

COMMITMENT

Your vehicle is more than just transportation, it's what makes your business run efficiently. At Nissan Commercial Vehicles, we understand our part in making you run cost-effectively. That's why we've partnered with our commercial certified parts and service dealers to ensure we are there for you when you need us. As part of our parts and service commitment to you, you will experience the following at every certified Nissan Commercial Vehicles dealer:

Roadside Assistance. Our commercial vehicles come with the confidence of Roadside Assistance, offering lockout support, towing services, emergency fuel delivery, tire changes and dead-battery jump-start service.¹ In addition, our Trip Interruption benefits offer assistance if your vehicle becomes disabled more than 100 miles from your company's location.²

Service and maintenance plans. Developed specifically for Nissan Commercial Vehicles and backed by Nissan, a wide variety of service plans are available to you, including high-mileage options. Your authorized Nissan Commercial Vehicles dealer has all the details, and will be glad to help you find the plan that best fits your business needs.

We've got you covered. Every Nissan is backed by a 36-month/36,000-mile (whichever occurs first) limited vehicle coverage, and a 5-year/60,000-mile (whichever occurs first) limited powertrain coverage. (See your Nissan Commercial Vehicles dealer or reference the Nissan Owner's Manual for details). And for extra protection, you can also add Security+Plus,[®] the only extended service agreement approved by Nissan.

NV200™ COMPACT CARGO: SEVEN INCENTIVES TO CHOOSE FROM³

With the Nissan Commercial Vehicles Incentive Program,³ qualifying commercial buyers can enhance their purchase with seven exciting complimentary choices to help you get down to business.

COMPLIMENTARY CARGO MANAGEMENT PACKAGES

1. One AD Series shelf and steel partition MSRP: \$900
2. One AD Series shelf and wire partition MSRP: \$710
3. One HD Series shelf and steel partition MSRP: \$950
4. One HD Series shelf and wire partition MSRP: \$760

COMPLIMENTARY UTILITY PACKAGE

5. 2-bar ladder rack and wire partition MSRP: \$810

COMPLIMENTARY NCV GRAPHICS PACKAGE

6. Package includes 40 square feet of custom-designed, professionally installed graphics by 3M. MSRP: \$750

COMMERCIAL CASH INCENTIVE

7. This option allows eligible customers to take advantage of a cash incentive. See your local Nissan Commercial Vehicles dealer for complete guidelines surrounding the cash-incentive amounts.

UPGRADE PACKAGES

Nissan Commercial Vehicles is now offering five additional upgrade packages as an alternative to the seven complimentary offerings. The new packages will be offered at a discount to the customer. Customer participation will vary based on package selected.

CARGO MANAGEMENT PACKAGES (all packages come with steel partition and 4-hook bar)

1. Includes two 32" AD Series shelves
MSRP: \$1,410 Customer Responsibility: \$400
2. Includes two 32" HD Series shelves
MSRP: \$1,490 Customer Responsibility: \$450
3. Includes two 32" and one 28" AD Series shelves
MSRP: \$1,785 Customer Responsibility: \$650
4. Includes two 32" and one 28" HD Series shelves
MSRP: \$1,970 Customer Responsibility: \$750

GRIP LOCK LADDER RACK PACKAGE

5. Includes double-grip lock ladder rack and a steel partition
MSRP: \$1,600 Customer Responsibility: \$600



WE'VE GOT BIG PLANS FOR THE FUTURE.

A SMARTER WAY TO MOVE CARGO IS JUST THE BEGINNING. The NV200 Compact Cargo is just the first in a family of efficient commercial vehicles. In fall 2013, the NV200 Compact Cargo (concept vehicle shown) will also become the official taxi of New York City, proving that New Yorkers know a good thing when they see it.

NV200 Taxi⁴ Coming Fall 2013

¹See your Nissan Commercial Vehicles dealer and read the Roadside Assistance section of your Warranty Booklet for complete details and eligibility requirements. ²Roadside Assistance and Trip Interruption available during the first four years after initial new vehicle delivery. Restrictions apply. See Owner's Manual for details. ³The Commercial Incentive Packages are products designed, manufactured, tested and installed by an independent supplier, Adrian Steel Company or 3M, specifically for NV200 Compact Cargo vans. Adrian Steel Company and 3M products are not covered by the Nissan New Vehicle Limited Warranty. Nissan is not responsible for the safety or quality of the installation or alterations made by Adrian Steel Company or 3M to your NV200 Compact Cargo van. See your local dealer for details. The wraps application is a nongenuine Nissan affiliate product available through 3M, Inc. Nissan does not warranty Cargo Graphics Package; instead, warranty is provided by 3M, Inc. Offer valid for 2013 model-year Nissan NV200 Compact Cargo vans. Please see your local NCV dealer for more details on the Commercial Incentive Program. To find your local NCV dealer, reference the dealer locator at www.NissanCommercialVehicles.com.

⁴The NYC Taxi marks are registered trademarks of the City of New York and used with permission. Always wear your seat belt, and please don't drink and drive. ©2013

THERE'S AN NV200™ COMPACT CARGO PERFECT FOR YOUR NEEDS.

CHOOSE FROM THESE MODELS



NV200 S INCLUDES:

- 2.0-liter DOHC 4-cylinder engine
- Xtronic CVT* (Continuously Variable Transmission)
- 11.0"/9.0" Brakes front/rear
- 15" Steel wheels with 185/60R15 all-season tires
- Black exterior trim
- Six exterior roof rack-mounting points
- Gray cloth seating with vinyl bolster wear patches
- Fold-down passenger's seat with seatback tray table
- 40/60 Split rear cargo doors
- 180° Maximum opening range for rear cargo doors
- Mobile Office Style center console with storage
- Two cup holders
- Upper dashboard storage bin
- Passenger's under-seat slide-out storage tray
- 12-volt DC power outlet
- Rear cargo light
- 20 Interior integrated reinforced cargo-mounting points
- Rear cargo floor protector
- AM/FM/CD audio system
- Pre-wiring for telematics upfitting
- Six standard air bags
- Vehicle Dynamic Control (VDC)

KEY AVAILABLE PACKAGES:

- Cruise Control Package
- Rear Door Glass Package
- Bluetooth® Hands-free Phone System Package



NV200 SV INCLUDES NV200 S EQUIPMENT PLUS:

- Power heated outside mirrors
- Six floor-mounted D-rings in cargo area
- Power door locks with auto-locking feature
- Remote keyless entry
- Cruise control with steering wheel-mounted controls
- Additional 12-volt DC power outlet in center console

KEY AVAILABLE PACKAGES:

- Technology Package
- Rear Door Glass Package
- Bluetooth® Hands-free Phone System Package
- Exterior Appearance Package



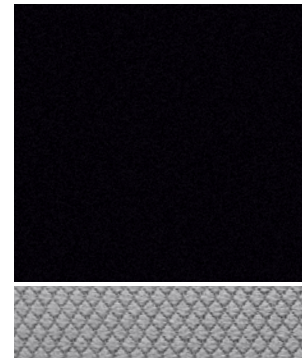
NV200 SV Exterior Appearance Package

- Chrome grille
- Body-color door handles and outside mirrors
- Body-color front and rear bumpers
- 5-split spoke wheel covers

STAND OUT FROM THE CROWD.

Your Nissan NV200 Compact Cargo packs a big first impression, so choose your favorite color to highlight your business.

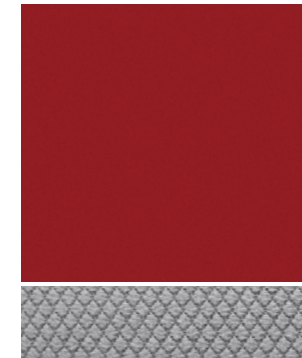
PAINT SELECTIONS / FABRICS ACCESSORIES



Super Black KH3

S

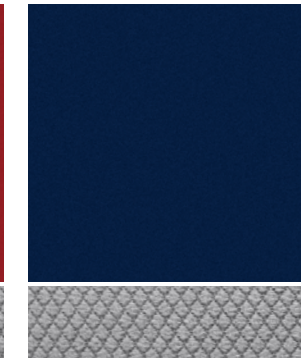
SV



Red Brick NAC

S

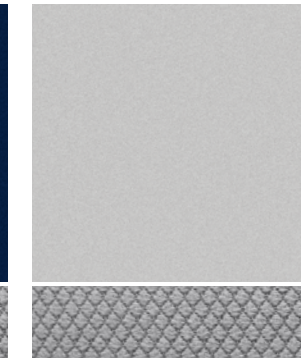
SV



Blue Onyx B23

S

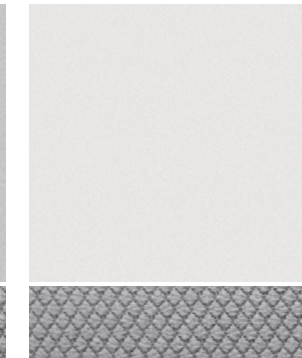
SV



Brilliant Silver K23

S

SV



Fresh Powder QM1

S

SV

Vehicles above shown with SV Appearance Package

GENUINE NISSAN ACCESSORIES. IMPRESS. CONNECT. PROTECT. ORGANIZE.

Every Genuine Nissan Accessory is: custom-fit, custom-designed and durability-tested; backed by Nissan's 3-year/36,000-mile (whichever occurs first) limited warranty; and can be financed when installed by dealer at time of purchase.¹

For more information and to shop online for Genuine Nissan Accessories, go to parts.NissanUSA.com.



Splash Guards



Body Side Moldings



Side-window Deflectors



Rear Bumper Protector



All-season Floor Mats

¹Covered by Nissan's Limited Warranty on Genuine Nissan Accessories for the longer of 12 months/12,000 miles (whichever occurs first) or the remaining period under the 3-year/36,000-mile (whichever occurs first). Nissan New Vehicle Limited Warranty. Terms and conditions apply. See Warranty Information Booklet for details. The Bluetooth® word mark and logos are owned by Bluetooth SIG, Inc. and any use of such marks by Nissan is under license.

DIMENSIONS/CAPACITIES/WEIGHTS/MPG



Exterior Dimensions – Inches

| | |
|-----------------------------------|-------|
| Wheelbase | 115.2 |
| Overall length | 186.3 |
| Overall width | 68.1 |
| Overall height | 73.7 |
| Track width (front) | 60.0 |
| Track width (rear) | 59.8 |
| Sliding side doors opening width | 27.0 |
| Sliding side doors opening height | 45.8 |
| Rear door opening width | 49.9 |
| Rear door opening height | 48.8 |
| Step-in height (front) | 14.8 |
| Step-in height (rear) | 19.2 |
| Cargo area liftover height | 21.1 |
| Angle of approach (degrees) | 17.3 |
| Angle of departure (degrees) | 24.8 |
| Turning diameter (ft.) | 36.7 |

Interior Dimensions – Inches

| | |
|---------------|------|
| Head room | 41.7 |
| Leg room | 42.6 |
| Hip room | 51.3 |
| Shoulder room | 54.1 |

Cargo Dimensions – Inches

| | |
|--|-------|
| Cargo volume (cu. ft.) | 122.7 |
| EPA interior passenger volume (cu. ft.) | 55.6 |
| Total interior volume (cu. ft.) | 178.3 |
| Maximum cargo length | 82.8 |
| Maximum cargo length with passenger seat folded down | 116.3 |
| Maximum cargo width | 54.8 |
| Cargo width at wheelhouse floor | 48.0 |
| Maximum cargo height | 53.0 |

Capacities

| | |
|-------------------|------|
| Seating capacity | 2 |
| Fuel tank (gals.) | 14.5 |
| Engine oil (qts.) | 4.6 |

Weight – Lbs.

| | |
|------|-------|
| GVWR | 4,751 |
|------|-------|

| | S | SV |
|------------------------------|-------|-------|
| Maximum payload ¹ | 1,500 | 1,477 |
| Curb weight | 3,252 | 3,255 |

¹Payload rating represents maximum allowable weight of people and cargo, and can be reduced by the weight of optional equipment. ²Required SiriusXM Satellite Radio, NavTraffic and NavWeather subscriptions sold separately after trial period. Installation costs, one-time activation fee, other fees and taxes will apply. NavTraffic available in select markets. Services available only to those 18 or older in the 48 contiguous states and D.C. Fees and programming subject to change. Subscriptions governed by Customer Agreement available at siriusxm.com. ©2013 Sirius XM Radio Inc. Sirius, XM and all related marks and logos are trademarks of Sirius XM Radio Inc. The Bluetooth® word mark and logos are owned by Bluetooth SIG, Inc., and any use of such marks by Nissan is under license. Google® is a registered trademark of Google Inc. iPod® is a registered trademark of Apple, Inc. All rights reserved. iPod not included. Pandora® is a registered trademark of Pandora Media.

2013 EPA Fuel Economy Estimates

| | | |
|--------------|-------|-------|
| City/Hwy MPG | S | SV |
| | 24/25 | 24/25 |

¹Actual mileage may vary with driving conditions – use for comparison only.

SPECIFICATIONS

| Engine | S | SV |
|---|---|----|
| MR20DE – 2.0 liter DOHC 16-valve 4-cylinder engine | | |
| – Horsepower – 131 hp @ 5,200 rpm | | |
| – Torque – 139 lb-ft @ 4,800 rpm | | |
| Emissions – 50-state emissions | | |
| Continuously Variable Valve Timing Control System (CVTCS) | | |
| Nissan Direct Ignition System | | |
| Electronic drive-by-wire throttle | | |
| Alternator (110 amps) | | |

| Drivetrain | S | SV |
|---|---|----|
| Xtronic CVT [®] (Continuously Variable Transmission) | | |

| Brakes | S | SV |
|---|---|----|
| 11.1" Front vented disc brakes | | |
| 9.0" Rear drum brakes | | |
| 4-wheel Anti-lock Braking System (ABS) | | |
| Electronic Brake force Distribution (EBD) | | |
| Brake Assist | | |

| Suspension/Steering | S | SV |
|--|---|----|
| Independent strut front suspension | | |
| Multi-leaf rear suspension with solid axle | | |
| Front stabilizer bar | | |
| Engine-speed-sensitive electric power steering | | |

| Wheels/Tires | S | SV |
|--|---|----|
| 15" x 5.5" steel wheels | | |
| 15" x 5.5" steel wheels with split 5-spoke silver wheel covers | | |
| 185/60R15 all-season tires | | |

| | |
|--|--|
| ■ Standard | ■ Part of Rear Door Glass Package |
| ■ Part of SV Technology Package | ■ Part of S Cruise Control Package |
| ■ Part of Bluetooth® Hands-free Phone System Package | ■ Part of SV Exterior Appearance Package |

SPECIFICATIONS (CONTINUED)

| Exterior Features | S | SV |
|--|---|----|
| Black bumpers | | |
| Black door handles and outside mirrors | | |
| Body-color bumpers | | |
| Body-color door handles and outside mirrors | | |
| Silver-painted grille | | |
| Chrome grille | | |
| Dual power heated outside mirrors | | |
| Six roof rack-mounting points | | |
| 40/60 Split rear cargo doors | | |
| 180° Maximum opening range for rear cargo doors | | |
| Sliding side door on both driver's and passenger's sides | | |
| Rear window defroster | | |
| Halogen headlights | | |
| Daytime Running Lights (DRL) | | |
| Rear privacy glass | | |

| Comfort/Convenience | S | SV |
|---|---|----|
| NissanConnect SM with Navigation with 5.8" QVGA color touch-screen monitor | | |
| – color touch-screen monitor | | |
| Nissan Voice Recognition for audio and navigation | | |
| NavTraffic and NavWeather with 3-month trial subscription | | |
| – provided by SiriusXM [®] | | |
| POIs powered by Google [®] and Google [®] Send-to-Car | | |
| Hands-free text messaging assistant | | |
| Bluetooth [®] Hands-free Phone System | | |
| Air conditioning | | |
| 20 Integrated reinforced cargo-mounting points for custom shelving | | |
| Six floor-mounted D-rings in cargo area | | |
| Pre-wiring for telematics upfitting | | |
| Driver's and passenger's dual overhead map lights | | |
| Cargo area work light | | |
| Interior cargo panels | | |
| Interior rearview mirror | | |
| Rear cargo floor protector | | |
| One assist grip | | |
| Remote keyless entry (deletes front passenger door key cylinder) | | |
| Power windows with driver's one-touch auto-down with auto-reverse | | |
| Power door locks with auto-locking feature | | |
| Cruise control with steering wheel-mounted controls | | |
| Variable intermittent windshield wipers | | |
| Multi-functional trip computer | | |
| Mobile Office Style center console with file folder and laptop storage | | |
| Upper dashboard storage bin | | |
| Passenger's under-seat slide-out storage tray | | |
| Front-door map pockets | | |
| Two cup holders | | |
| 12-volt DC power outlet | | |
| Two 12-volt DC power outlets | | |
| RearView Monitor | | |

| Seating/Appointments | S | SV |
|---|---|----|
| Gray cloth seats with reinforced wear patches on outer bolsters | | |
| Driver's seat armrest | | |
| 6-way manual adjustable driver's seat with manual lumbar | | |
| 4-way manual passenger's seat | | |
| Fold-down passenger's seat with seatback tray table | | |

| Audio/Entertainment | S | SV |
|--|---|----|
| AM/FM/CD audio system | | |
| Radio Data System (RDS) | | |
| MP3/WMA CD playback capability | | |
| Auxiliary audio input jack | | |
| USB connection port for iPod [®] interface and other compatible devices | | |
| Two speakers | | |
| SiriusXM Satellite Radio with 3-month trial subscription ² | | |
| Pandora [®] radio compatibility | | |
| Streaming audio via Bluetooth [®] wireless technology | | |

| Safety/Security | S | SV |
|--|---|----|
| Nissan Advanced Air Bag System (AABS) with dual-stage supplemental front air bags with seat belt and occupant-classification sensors | | |
| Driver's and passenger's seat-mounted side-impact supplemental air bags | | |
| Roof-mounted curtain supplemental air bags for side-impact and rollover head protection | | |
| Vehicle Dynamic Control (VDC) with Traction Control System (TCS) | | |
| 3-point ALR/ELR passenger seat belt system (ELR for driver) | | |
| Front seat belts with pretensioners and load limiters | | |
| Zone Body construction with front and rear crumple zones | | |
| Energy-absorbing steering column | | |
| Tire Pressure Monitoring System (TPMS) | | |
| Nissan Vehicle Immobilizer System | | |

PACKAGES

| |
|---|
| ■ SV Technology Package |
| NissanConnect SM with Navigation with 5.8" QVGA color touch-screen monitor |
| ▪ Nissan Voice Recognition for audio and navigation |
| ▪ Bluetooth [®] Hands-free Phone System |
| ▪ NavTraffic and NavWeather ² |
| ▪ POIs powered by Google [®] and Google [®] Send-to-Car |
| ▪ Pandora [®] radio compatibility |
| ▪ Streaming audio via Bluetooth [®] wireless technology |
| ▪ Hands-free text messaging assistant |
| ▪ SiriusXM Satellite Radio ² |
| ▪ MP3 playback capability |
| ▪ USB connection port for iPod [®] and other compatible devices |
| ▪ RearView Monitor |

| |
|--|
| ■ Bluetooth[®] Hands-free Phone System Package |
| Bluetooth [®] Hands-free Phone System |
| ▪ MP3 playback capability |

| |
|--------------------------------------|
| ■ Rear Door Glass Package |
| Rear door windows with privacy glass |
| ▪ Interior rearview mirror |
| ▪ Rear window defroster |

| |
|---|
| ■ S Cruise Control Package |
| Cruise control with illuminated steering wheel-mounted controls |

| |
|---|
| ■ SV Exterior Appearance Package |
| Body-color front and rear bumpers |
| ▪ Body-color door handles and mirrors |
| ▪ Split 5-spoke silver wheel covers |
| ▪ Chrome grille |

Nissan. Innovation that excites.™

NISSAN NV200™ COMPACT CARGO

Shouldn't what you drive help drive your business? Absolutely. And that's what inspires our innovation. We look at every part of your drive and ask how can we make this better, smarter and more productive. So when you get in your new NV200 Compact Cargo, you'll experience the difference innovation makes:

Perfect size for your

business. With a 36.7' turning diameter, NV200 Compact Cargo is designed to negotiate tight city streets.

Big on cargo space.

NV200 Compact Cargo is small on the outside, but big on the inside, with over 122 cubic feet of cargo space.¹

Best-in-class MPG.

NV200 Compact Cargo provides best-in-class EPA fuel economy, with estimates of 24 MPG city and 24 MPG combined.^{2,3}

Your mobile office.

A fold-down passenger seat that doubles as a work desk and a center console that can hold a laptop mean you're ready for business.

The Nissan Commercial Vehicle lineup is just part of the family of Nissan Vehicles:



Versa® Hatchback



Versa® Sedan



Sentra®



Altima® Sedan



Altima® Coupe



Maxima®



LEAF®



Z® Coupe



Z® Roadster



GT-R®



cube®



JUKE®



Rogue®



Murano®



Xterra®



Pathfinder®



Armada®



Quest®



Frontier®



Titan®



NV200™ Compact Cargo



NV® Passenger



NV® Cargo Standard Roof



NV® Cargo High Roof

visit NissanCommercialVehicles.com/

Follow Nissan Commercial Vehicles on:



Innovation
that excites

¹Cargo and load capacity limited by weight and distribution. Always secure all cargo. Heavy loading of the vehicle with cargo, especially on the roof, will affect the handling and stability of the vehicle. ²Ward's Small Van Market Segmentation. 2013 NV200 Compact Cargo vs. 2013 competitors. ³2013 EPA Fuel Economy Estimate 24 MPG city and 24 MPG combined. Actual mileage may vary with driving conditions – use for comparison only. YouTube® is a registered trademark of Google Inc. ©2013 Nissan North America, Inc. ¹13 NV200. Part #: NV200LB-042013. At NissanUSA.com, you'll find virtual product demonstrations, a way to "build your own Nissan," a dealer locator, and more information about key Nissan support services. Or if you'd prefer, call **1-800-NISSAN-3** for answers to specific questions about NV200 Compact Cargo or any other Nissan vehicle. The Nissan names, logos, product names, feature names, and slogans are trademarks owned by or licensed to Nissan Motor Co. Ltd. and/or its North American subsidiaries. **Always wear your seat belt, and please don't drink and drive.** ©2013 Nissan North America, Inc. This brochure is intended for general descriptive and informational purposes only. It is subject to change and does not constitute an offer, representation or warranty (express or implied) by Nissan North America, Inc. Interested parties should confirm the accuracy of any information in this brochure as it relates to a vehicle directly with Nissan North America, Inc. before relying on it to make a purchase decision. Nissan North America, Inc. reserves the right to make changes, at any time, without prior notice, in prices, colors, materials, equipment, specifications, and models and to discontinue models or equipment. Due to continuous product development and other pre- and post-production factors, actual vehicle, materials and specifications may vary from this brochure. Some vehicles shown with optional equipment. See the actual vehicle for complete accuracy. Availability and delivery times for particular models or equipment may vary. Specifications, options and accessories may differ in Hawaii, U.S. territories and other countries. For additional information on availability, options or accessories, see your Nissan dealer or contact Nissan North America, Inc.