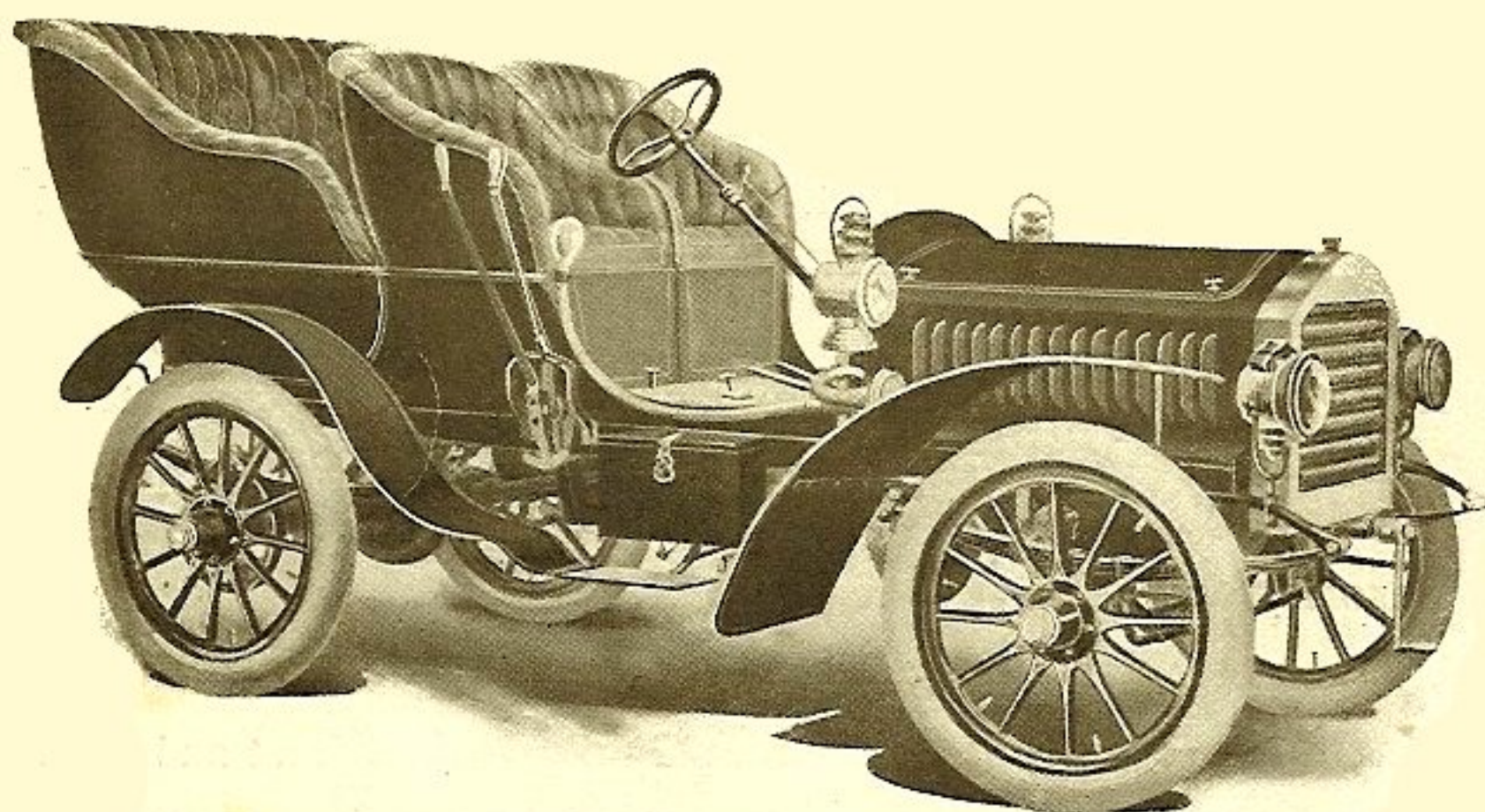


# NATIONAL

G A S O L I N E

MODEL A



**HAYDEN AUTOMOBILE CO.,**  
Tel. South 2. 1337 MICHIGAN AVE.,  
CHICAGO DISTRIBUTORS.

**National Motor Vehicle Co.**

Indianapolis

Indiana



# National Gasoline

## Model "A"

**MOTOR**—Forty-horse power. Four cylinders, 5 x 6 inches, vertical, individually mounted under bonnet. Mechanical valves. Aluminum crank case. Interchangeable parts.

**TRANSMISSION**—Sliding gear, three forward and reverse, direct on high speed. Gears run in oil bath. Self-oiling bearings.

**WHEEL BASE**—Ninety-six inches.

**TREAD**—Fifty-four inches.

**DRIVE**—Bevel gear with telescopic shaft and Cardan joints. Gears in oil-tight case of special National construction. "No chains."

**BEARINGS**—Ball, roller and replaceable bronze bushings.

**OILING**—Crandall sight feed, oiler with pump, grease cups and ring oilers on important bearings. Splash lubrication in crank case.

**ELECTRICAL EQUIPMENT**—Vibrator, quadruple coil with commutator on dash. Jump spark. Two sets batteries, one storage, one dry-cell.

**GASOLINE CAPACITY**—Fifteen gallons.

**WATER CAPACITY**—Six gallons.

**WHEELS**—Wood artillery pattern. Twelve spokes, front and rear.

**TIRES**—34 x 4 inches, Diamond Detachable, Continental type.

**BRAKES**—Three brakes operated by foot and hand levers. Applying either brake releases clutch. Foot lever to band brake on driving shaft. Powerful hand lever with ratchet to compression bands on both rear wheels.

**GUARDS**—Plow share front, continuous metal from step over rear wheel.

**FRAME**—Pressed steel "U" shape. Riveted and brazed.

**AXLES**—Cold drawn tube, front and rear. Heavy gauge. Live inner axle.

**BODY**—Removable tonneau with graceful curves. Extra roomy. High back. Wide door. Three seats facing forward. Two individual front seats, both removable.

FINISH—Royal blue, gold stripe.

UPHOLSTERING—Luxuriously upholstered in leather.

STEERING SYSTEM—Worm and gear type, non-reversible. Forged knuckles and yokes, extra heavy. Double connecting rods to arms, front and rear of steering knuckles.

SPEED—Four to fifty miles.

MUFFLER—Reduces noise to minimum.

WATER SYSTEM—Latest type, combined radiator and tank, cooled by fan. Circulation secured by gear driven rotary pump.

BONNET—Oval top, brass trimmed, ample door space and entire bonnet hinged at back.

CONTROL—Single lever at driver's right controls all speeds, three forward and reverse. In changing speeds clutch is released automatically.

SPRINGS—Forty-inch half elliptic front and rear.

STEERING POST—Adjustable for height. Fitted with tilting wheel.

CLUTCH—Self contained cone, wide flange, leather covered.

EQUIPMENT—Side, front and tail lamps. Horn and tube. Storm aprons and tools.

PRICE—\$3,000, F. O. B., Indianapolis. 25 per cent. cash with the order, balance draft against B. of L. Orders filled in rotation.

