

Arise, captives!

Are you boxed-in by the sedan-buying habit?



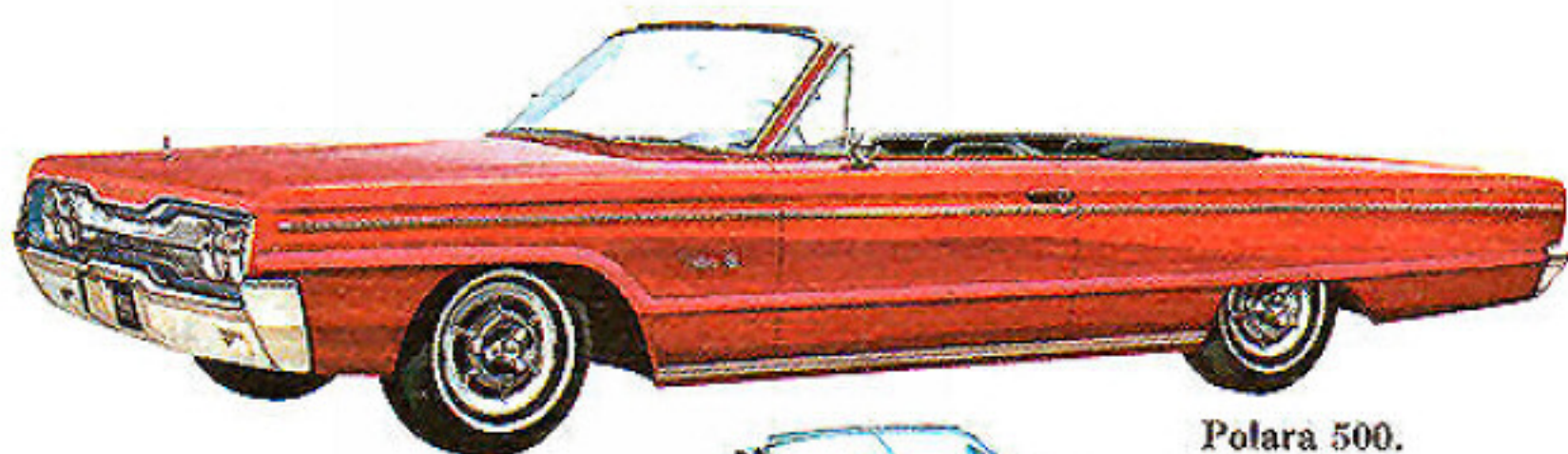
Raise the roof!

Join the Rebellion in a '66 Dodge convertible!





If you need more reasons—here they are . . .



Polara 500.



Polara.



Coronet 500.



Coronet 440.



Dart GT.



Dart 270.

Now, the tough part.

Which one?



HERE'S HOW DODGE'S 5-YEAR, 50,000-MILE ENGINE AND DRIVE TRAIN WARRANTY PROTECTS YOU: Chrysler Corporation confidently warrants all of the following vital parts of its 1966 cars for 5 years or 50,000 miles, whichever comes first, during which time any such parts that prove defective in material and workmanship will be replaced or repaired at a Chrysler Motors Corporation Authorized Dealer's place of business without charge for such parts or labor; engine block, head and internal parts, intake manifold, water pump, transmission case and internal parts (excepting manual clutch), torque converter, drive shaft, universal joints, rear axle and differential, and rear wheel bearings.

REQUIRED MAINTENANCE: The following maintenance services are required under the warranty—change engine oil every 3 months or 4,000 miles, whichever comes first; replace oil filter every second oil change; clean carburetor air filter every 6 months and replace it every 2 years; and every 6 months furnish evidence of this required service to a Chrysler Motors Corporation Authorized Dealer and request him to certify receipt of such evidence and your car's mileage. Simple enough for such important protection.

DODGE DIVISION



CHRYSLER
MOTORS CORPORATION

BLONDES LIKE 'EM.

And you know blondes. They have more fun than anyone. Especially the ones that carry on with a Polara 500.

Polara 500—with its manly 383 cubic inch V8, plush bucket seats and jazzy center console. Why, some of the more brazen misses have even been known to run through its wall-to-wall carpeting barefoot.

Try to ignore a Polara 500. Just try.



BRUNETTES LIKE 'EM.

For what's a girl to do? When devilish Dart comes on with its suave looks and roomy, good-looking interiors, well . . . who can resist it? And what a line!

All that sweet talk about being priced down where a working gal can afford it. It's true. It's true.

No wonder we love you, Dart.





REDHEADS LIKE 'EM.

And that's the way it should be.

Redheads just naturally crave excitement. And Coronet delivers it, naturally. Remember those cars you used to consider "tigers"? Used to, that is, until Coronet came around with its commanding 273 V8 . . . sinful looks and devil-may-care attitude. It's obvious why they call Coronet "The Animal Tamer." GRRRRR.



And while *men* may prefer
some other body style,
they'll go along
with a trend.

Arise, captives!

Are you boxed-in by the sedan-buying habit?



Raise the roof!

Join the Rebellion in a '66 Dodge convertible!



Polara 500.



Polara.



Coronet 500.



Coronet 440.



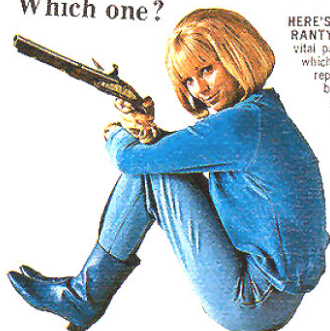
Dart GT.



Dart 270.

Now, the tough part.

Which one?



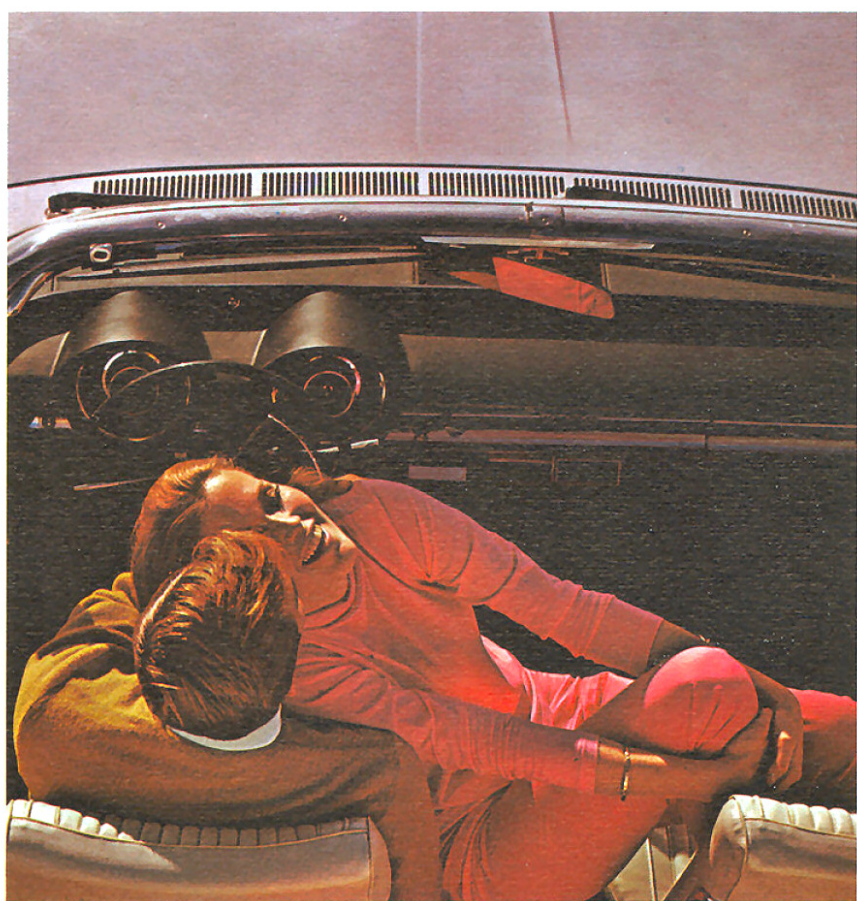
HERE'S HOW DODGE'S 5-YEAR, 50,000-MILE ENGINE AND DRIVE TRAIN WARRANTY PROTECTS YOU: Chrysler Corporation confidently warrants all of the following vital parts of its 1966 cars for 5 years or 50,000 miles, whichever comes first, during which time any such parts that prove defective in material and workmanship will be replaced or repaired at a Chrysler Motors Corporation Authorized Dealer's place of business without charge for such parts or labor: engine block, head and internal parts, intake manifold, water pump, transmission case and internal parts (excepting manual clutch), torque converter, drive shaft, universal joints, rear axle and differential, and rear wheel bearings.

REQUIRED MAINTENANCE: The following maintenance services are required under the warranty—change engine oil every 3 months or 4,000 miles, whichever comes first; replace oil filter every second oil change; clean carburetor air filter every 6 months and replace it every 2 years; and every 6 months furnish evidence of this required service to a Chrysler Motors Corporation Authorized Dealer and request him to certify receipt of such evidence and your car's mileage. Simple enough for such important protection.

DODGE DIVISION



CHRYSLER
MOTORS CORPORATION



If you need more reasons—here they are . . .

BLONDES LIKE 'EM.

And you know blondes. They have more fun than anyone. Especially the ones that carry on with a Polara 500.

Polara 500—with its manly 383 cubic inch V8, plush bucket seats and jazzy center console. Why, some of the more brazen misses have even been known to run through its wall-to-wall carpeting barefoot. Try to ignore a Polara 500. Just try.



BRUNETTES LIKE 'EM.

For what's a girl to do? When devilish Dart comes on with its suave looks and roomy, good-looking interiors, well . . . who can resist it? And what a line!

All that sweet talk about being priced down where a working gal can afford it. It's true. It's true. No wonder we love you, Dart.



REDHEADS LIKE 'EM.

And that's the way it should be. Redheads just naturally crave excitement. And Coronet delivers it, naturally. Remember those cars you used to consider "tigers"? Used to, that is, until Coronet came around with its commanding 273 V8 . . . sinful looks and devil-may-care attitude. It's obvious why they call Coronet "The Animal Tamer." GRRRRR.



And while *men* may prefer some other body style, they'll go along with a trend.