



CHEVROLET

*The Choice
from Coast
to Coast*

COMFORT, CONVENIENCE, LUXURY... Yours in Any Chevrolet



CHEVROLET

The Choice from Coast to Coast

The Sedan and the Coupe have a higher seat position than the top of the seat and a higher seat back. The higher seat position and higher seat back are shown here in a cutaway view of the seat.

Single front-wheel drive, with a special sliding door, makes moving the front wheel easier. The front wheel is shown in a cutaway view of the wheel.

The front-wheel drive has a lower seat position than the top of the seat and a lower seat back. The lower seat position and lower seat back are shown here in a cutaway view of the seat.

In addition to the vacuum gearshift, the Master De Luxe has a special vacuum gearshift, the vacuum gearshift, which is shown here in a cutaway view of the gearshift.



CHEVROLET'S CHASSIS... MODERN TO THE MINUTE IN EVERY UNIT

MASTER DE LUXE CHASSIS

- ENGINE AND DRIVE
- EXHAUST SYSTEM
- FUEL FEED SYSTEM
- BRAKING SYSTEM
- SPRING SUSPENSION

By power steering, the steering wheel is turned by means of a rack and pinion and steering gear. The steering gear is shown here in a cutaway view of the steering gear.

Each wheel is independently braked by means of a brake drum and brake shoes. The brake drum and brake shoes are shown here in a cutaway view of the brake drum and brake shoes.

Close-fitting "flex-disc" suspension makes steering, power and control.

The shock-absorbing shock absorber is shown here in a cutaway view of the shock absorber.

Five-gear automatic transmission is available for low pedal operation. The transmission is shown here in a cutaway view of the transmission.

CHEVROLET'S BODY... Unsurpassed in Safety, Luxury, Beauty

PERFECTED KNEE-ACTION RIDE



Chevrolet's perfected Knee-Action, regular equipment on the Master De Luxe models only, possesses all the recognized advantages of individual front-wheel suspension—improved ride, truer steering, more positive control, greater safety—developed to new heights. In addition, Chevrolet Knee-Action has still another great advantage—for Chevrolet builds its front-end suspension as a single unit—sembled, aligned, and inspected before being attached to the chassis frame. With this improved front-end suspension come corresponding improvements in the rear springing, to provide a smooth, comfortable ride.



A sturdy side stabilizer prevents excessive swaying on curves and turns.



Each front wheel is securely fast to chassis road shocks without affecting the other wheel or transmitting the shocks to the car itself.



Large windshields and windows give "observation car" visibility.



The sun visor is adjustable. It can be swung to the side to cut all glare at the window.



A safety lock is a 1937 improvement on the No. 1 lock, which is in all bodies.



In the Master De Luxe Sport Sedan, Sedan and Four-Door Coupe, rear-quarter windows slide back.



The glass compartment, with flush back, is a constant convenience.



Shoulder headlamps are mounted in fixed position on the fenders.



Windshield wipers lie snug against the lower molding when idle.



Hood hinge moldings are long and slender. Molded nameplates add a distinctive touch of styling.



Safety door handles combine beauty with safety and durability.

PERFECTED VACUUM GEARSHIFT



With the vacuum-operated gearshift, gear changes are made by a short lever mounted under the steering wheel. The floor compartment that is usually clear of observation.

With Chevrolet's vacuum gearshift, the driver has only to move the lever, and 80 per cent of the effort required for shifting is provided by a vacuum cylinder. In selecting gears, the lever is moved to the front or rear exactly as with the conventional shift; in passing through neutral the lever is moved straight up or down instead of to the left or right. The vacuum gearshift may be had on any Chevrolet passenger car at slight extra cost.



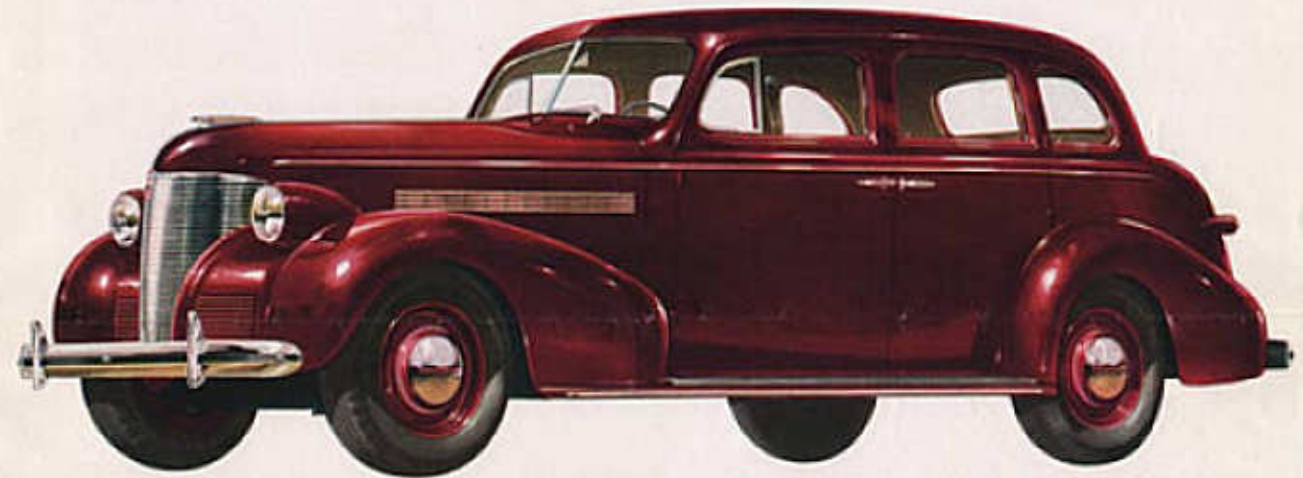
The gearshifting power mechanism, mounted on the transmission, is controlled from the steering column lever by shafts and connecting rods—no flexible cables are used.

CHEVROLET FOR 1939



MASTER DE LUXE TOWN SEDAN

Special Features—Built-in luggage compartment; enclosed tire carrier, covered tool box . . . Full-width front-seat cushion, divided back . . . Parcel ledge at top of rear-seat back . . . One arm rest at driver's seat, two rear . . . Two ash receptacles, rear . . . Two robe cords . . . Two tail and stop lights; center license plate lamp.



MASTER DE LUXE SPORT SEDAN

Special Features—Built-in luggage compartment; enclosed tire carrier, covered tool box . . . Parcel ledge at top of rear-seat back . . . Sliding rear-quarter windows . . . Two assist straps . . . Two arm rests front, two rear . . . Ash receptacle in back of front seat . . . Robe cord . . . Two tail and stop lights; center license plate lamp.



MASTER DE LUXE FOUR-PASSENGER COUPE

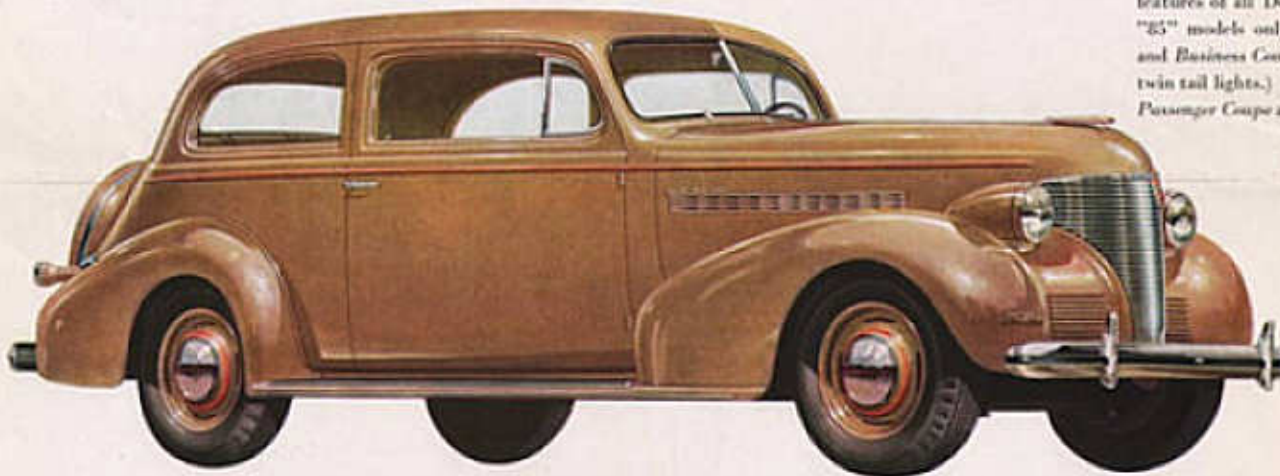
Special Features—Built-in luggage compartment; enclosed tire carrier . . . Full-width seat cushion, divided back; two interior folding rear seats . . . Sliding rear-quarter windows . . . Two arm rests . . . Two tail and stop lights; center license plate lamp.



MASTER DE LUXE BUSINESS COUPE

Special Features—Extra-large built-in luggage compartment; enclosed tire carrier . . . Additional large interior compartment and luggage deck back of seat . . . Full-width seat cushion, divided back . . . Arm rest at driver's seat . . . Two tail and stop lights; center license plate lamp . . . 12-gallon fuel tank.

THE ILLUSTRATIONS of the Chevrolet Master De Luxe models shown here truly represent also the exteriors of the Chevrolet Master "85" models, except that bumper guards and stainless steel running board moldings are exclusive features of all De Luxe models. (On the Master "85" models only the Sport Sedan, Town Sedan and Business Coupe body types are equipped with twin tail lights.) All body types except the Four-Passenger Coupe are offered in both chassis models.



MASTER DE LUXE COACH

Special Features—Interior luggage compartment back of rear seat . . . Spare-tire cover and lock . . . Full-width front-seat cushion, divided back . . . Parcel ledge at top of rear-seat back . . . One arm rest at driver's seat, two rear . . . Two ash receptacles, rear . . . Two robe cords . . . Two tail and stop lights.



MASTER DE LUXE SEDAN

Special Features—Interior luggage compartment back of rear seat . . . Spare-tire cover and lock . . . Parcel ledge at top of rear-seat back . . . Sliding rear-quarter windows . . . Two assist straps . . . Two arm rests front, two rear . . . Ash receptacle in back of front seat . . . Robe cord . . . Two tail and stop lights.

The right is reserved to change specifications, colors or prices without incurring any responsibility with regard to bodies or chassis previously sold. Chevrolet cars can be purchased on the General Motors Installment Plan—convenient, economical monthly payments. A General Motors Value. CHEVROLET MOTOR DIVISION, General Motors Sales Corporation DETROIT, MICHIGAN