

NEW



Styleline Series

1949 **CHEVROLET**

Fleetline Series



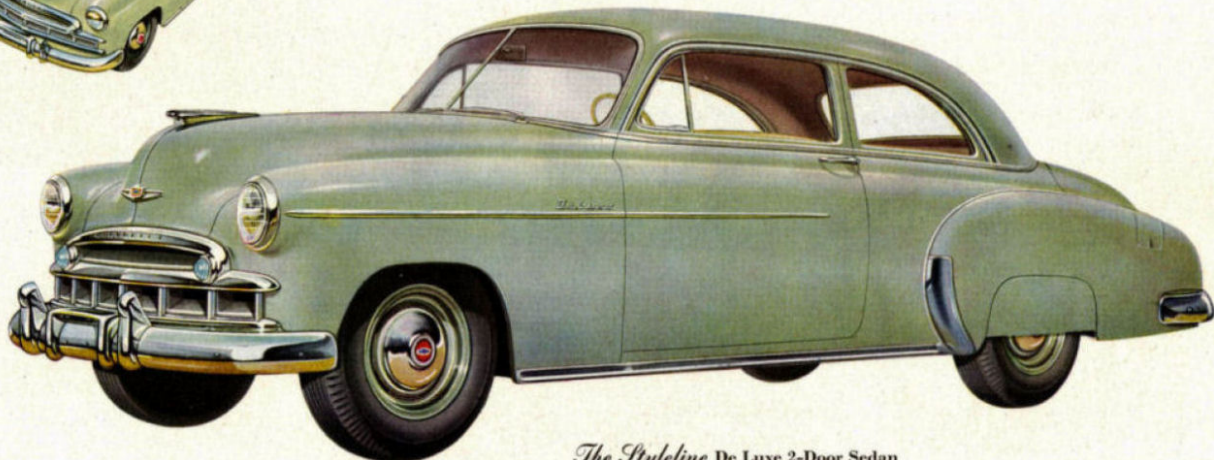
The Fleetline De Luxe 2-Door Sedan



The Fleetline Special 2-Door Sedan



The Styleline Special 2-Door Sedan



The Styleline De Luxe 2-Door Sedan

Fleetline Series

CHEVROLET 1949

Styleline Series



MEN

POWER PLANT

Engine Type: Valve-in-Head, 90 horsepower, Six cylinders, 6.6:1 compression ratio.

Pistons: Lightweight, cast alloy iron, with slipper skirt, surface treated.

Crankshaft: Four, precision interchangeable, thin wall ball-bearing main bearings. Counterbalanced. Rubber mounted harmonic balancer.

Oiling System: Specialized system with pressure streams of oil to the connecting rod bearings, instant cold starting lubrication, and positive pressure to crankshaft bearings, camshaft bearings, valve rocker arms and timing gear spray nozzle.

Fuel System: Single-adjustment balanced down-draft carburetor, with accelerating pump. Octane Selector, A. C. air cleaner, silencer and flame arrester. Fuel mixture heated (thermostatic control) in manifold heat-chamber.

Cooling System: Capacity, 16 quarts. Self-adjusting, permanently lubricated water pump. Individually cooled cylinders, full length water jackets. Nozzle jet valve seat cooling.

Electrical System: Delco-Remy ignition with centrifugal and vacuum spark-advance control. High intensity spark for heavy duty ignition. Waterproof coil. High output ventilated generator with voltage and current regulator. Delco-Remy starter, with solenoid-operated, positive shift (push button on instrument panel).

Power Plant Mounting: Three point, rubber cushioned support with two shear-type rubber torque reaction dampeners.

Clutch: Diaphragm spring type, ventilated. Permanently lubricated ball thrower bearings.

Transmission: Synchro-mesh with helical gears throughout. Manually operated steering column mounted gearshift control.

CHASSIS

Frames: Box-girder type. In the Convertible a "VK" structure of "T" beam members takes place of Engine Rear Support Cross Member.

Front Suspension: Utilized Knee-action, with fully-sealed bearings and direct double-acting hydraulic shock absorbers. Ride Stabilizer.

Rear Axle: Semi-floating type with hypoid-drive gears of 4.11 to 1 ratio.

Rear Springs: Semi-elliptic springs and shackles of heavy type. Rubber insulated. Metal spring covers. Direct double-acting hydraulic shock absorbers.

SPECIFICATIONS

Drive System: Torque tube drive. Tubular propeller shaft, fully enclosed.

Brakes: Four-wheel hydraulic, 11" brake drums. Self-aligning, full contact brake shoes. Mechanical parking brakes with L-shaped pull handle.

Steering Gear: Ball bearing mounted roller sector, worm mounted on tapered roller bearings; fully adjustable. Ratio 17.4 to 1. Center-point steering. Wheel diameter, 17 1/4"; all special models, three spoke with horn button, all de luxe models two spoke with horn blowing ring.

Wheels and Tires: Five, steel disc with short spokes. 6.70-15 tires on wide base rims. Tire pressure, 24 pounds (Station Wagons 24 pounds front, 30 pounds rear).

Wheelbase: 115 inches. Over-all length 197" (including bumpers). Station Wagon 198" (including bumpers).

Chassis Equipment: Bumpers with two guards,

both front and rear. Splash and gravel deflectors front and rear. License guard in front.

LIGHTS—HORN—BATTERY

Lights: Sealed Beam headlights with foot controlled beam indicator light on instrument panel. Parking lights blended into each side of radiator grille. Dual tail and stop lights on all models except Station Wagons, which have one. Rear license plate lights. Dome light all models. Dual Matched Horns.

Battery: 15-Plate 100 ampere-hour capacity.

INSTRUMENT PANEL—CONTROLS—VISION

Instruments: Speedometer. Oil pressure and gasoline gauges. Battery charge and engine heat indicators. Variable indirect instrument cluster lighting.

Controls: Rubber padded foot controls. Illuminated, 3 position ignition lock. Lights, choke, throttle, air intake, windshield wiper controls and starter button.

Vision: Single control dual windshield wipers. Two windshield defroster openings. Adjustable inside rear view mirror (outside on Convertible coupe).

BODY EQUIPMENT—SPECIAL MODELS

Regular equipment supplied on Special Models includes the following:

Exterior: Stainless steel body belt line molding. Stainless steel body sill moldings. Stainless steel rear fender crown moldings. Curved V windshield with stainless steel center molding. Push-button door handles with key locks in both front doors. Gasoline filler compartment under door in left rear fender.

Interior: Seats upholstered with tan, striped pattern, pile fabric with rubberized back. Sunshade for driver. Dual ventilators in dash. Friction-type ventilators with drip shields in both front doors. Dome light with integral switch.

BODY EQUIPMENT—DE LUXE MODELS

Regular equipment supplied on De Luxe Models includes the following in addition to, or in place of, the regular equipment listed for the special models:

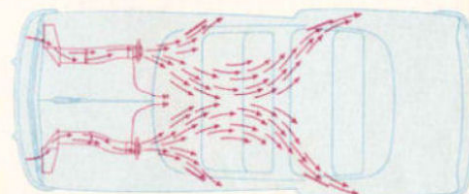
Exterior: Series nameplate (De Luxe) on front fenders. Stainless steel moldings on front fenders and doors. Stainless steel windshield reveal. Stainless steel side and back window reveals, except on Convertible Coupe and station wagons. Rear wheel cover panels.

Interior, Sedans and Sport Coupe: Seats upholstered with tan, striped pattern, flat cloth. Tan striped pattern, free-breathing, pile fabric optional. Foam rubber seat pads. Two sunshades. Instrument panel includes automatic glove box light, clock, ash tray, and cigarette lighter. Two-tone instrument panel finish of tan and brown deep-luster metallic lacquer. Friction-type ventilators in rear doors of four-door sedans. Automatic dome light switch at each front door. Arm rests on doors, front and rear, and on quarter panels of two-door sedans and Sport Coupe. Ash trays in two-door sedans and Sport Coupe. Ash tray on back of front seat in four-door sedans. Ash trays in arm rests of two-door sedans and Sport Coupe. New Sound-Absorbing roof insulation.

Interior, Convertible Coupe: Seats upholstered with combination of genuine leather and tan Bedford cord. Genuine carpet inserts in front floor mat, instrument panel and garnish moldings painted body color.

Interior, Station Wagons: Seats, sunshades, and stuff pads upholstered with tan leather fabric. Foam rubber seat pad on front seat only. Ceiling trimmed with leather fabric with wood grain design.

Now—The Car that "Breathes" for New All-Weather Comfort



You practically make your own weather when you drive a new Chevrolet! Outside air is brought in through new front ventilating ducts and circulated through the car as shown. Stale air and tobacco smoke are forced out. In warm weather, the incoming air

helps to keep you cool and comfortable. In cold weather, it is heated* to maintain even temperatures front and rear. In any weather, it's easy to keep all windows—including the rear—free of frost and fog.

*Heater and defroster units optional at extra cost.

The right is reserved to make changes of any time without notice, in prices, colors, materials, equipment, specifications and models, and also to discontinue models.

CHEVROLET MOTOR DIVISION, GENERAL MOTORS CORPORATION, DETROIT 2, MICHIGAN

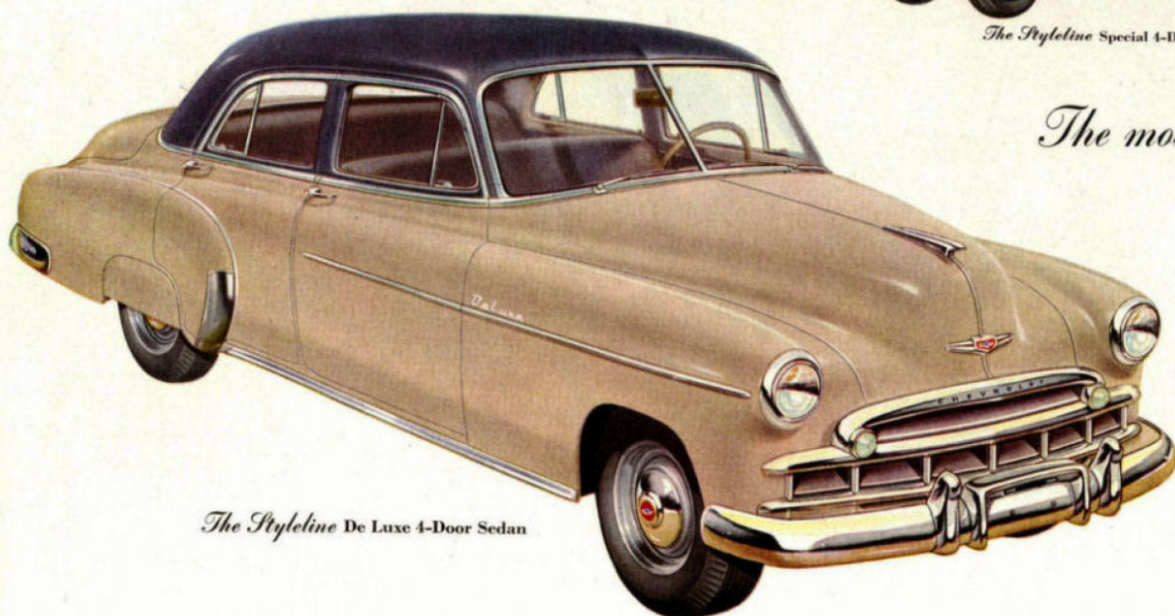
PRINTED IN U. S. A.



The Styleline Special 4-Door Sedan



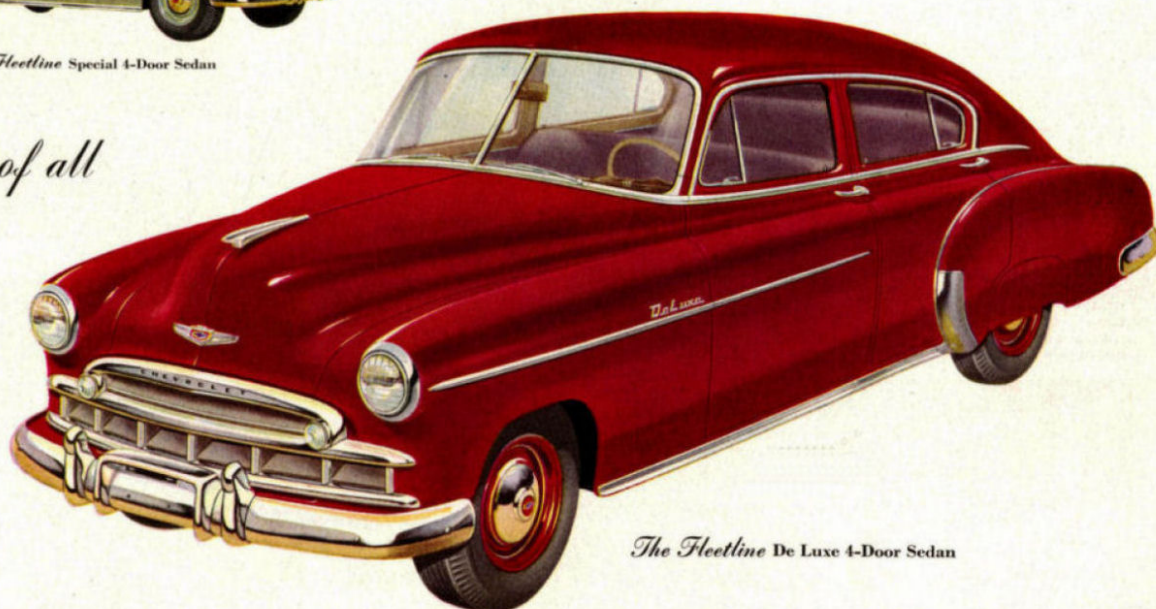
The Fleetline Special 4-Door Sedan



The Styleline De Luxe 4-Door Sedan

The most Beautiful **BUY** of all

There's never been a Chevrolet like this. Never a Chevrolet so smartly styled, so luxurious, so advanced in comfort, safety, and performance with economy. It's far and away the finest Chevrolet ever built—the most beautiful buy of all the new cars! Two distinctive new body styles in Fleetline and Styleline with 14 grand new models including De Luxe and Special.



The Fleetline De Luxe 4-Door Sedan



The Styleline Special Business Coupe



The Styleline Special Sport Coupe



The Styleline De Luxe Sport Coupe



The Styleline De Luxe Convertible



The Styleline De Luxe Convertible



The Styleline De Luxe Station Wagon—Natural Wood Body

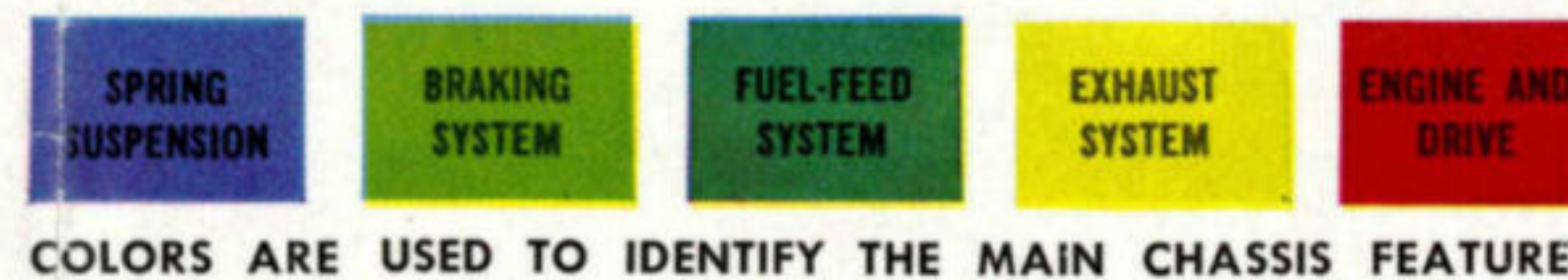
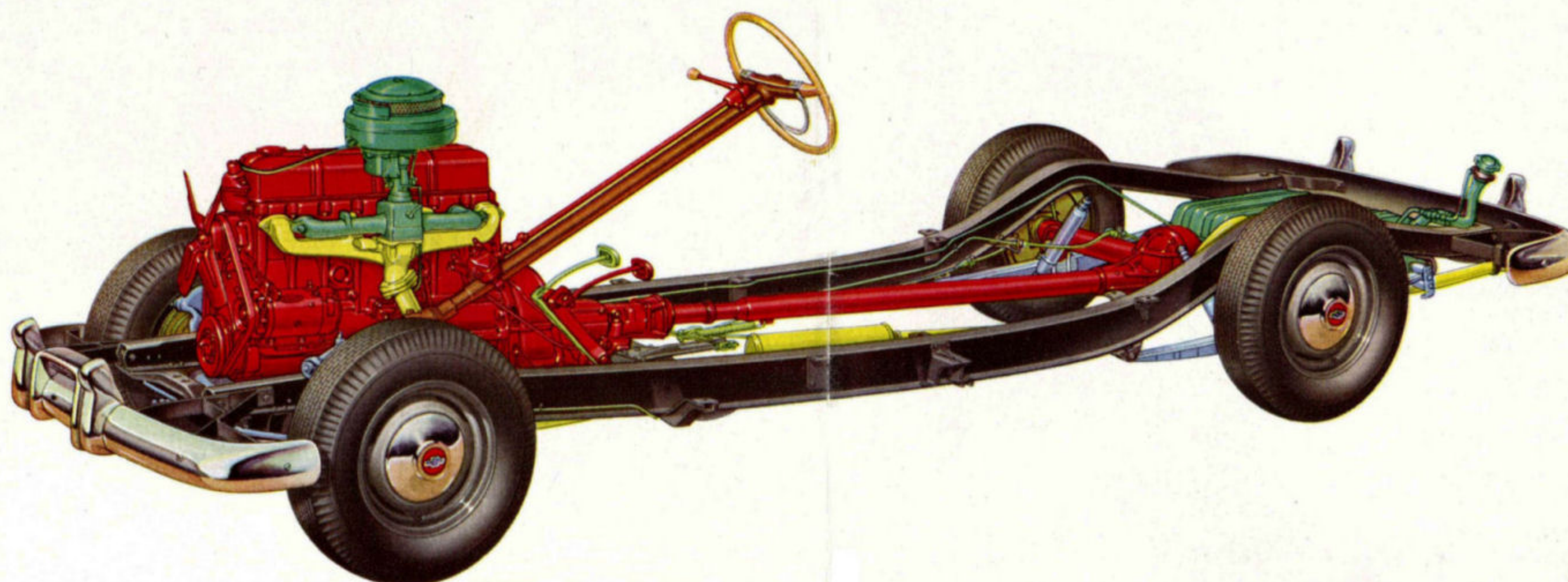


The Styleline De Luxe Station Wagon—Steel Body

20 MAJOR MECHANICAL ADVANCEMENTS

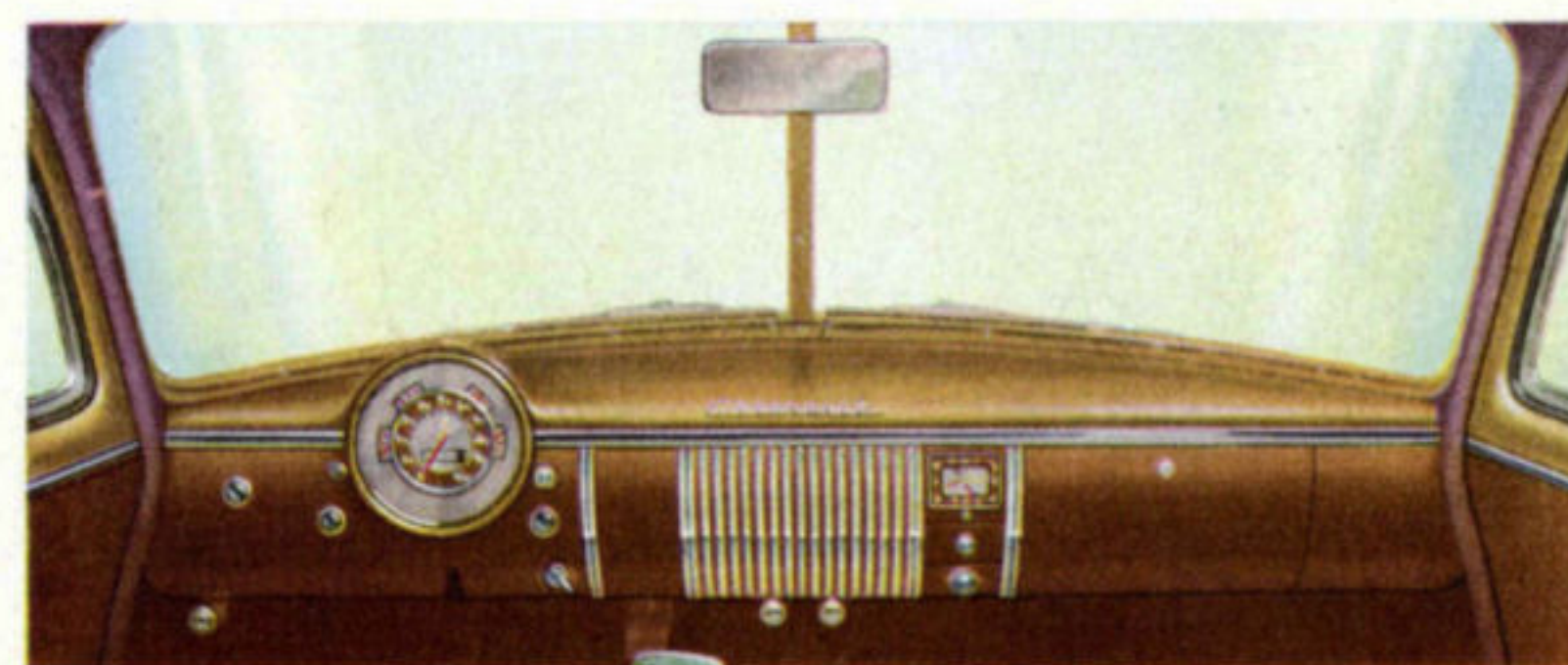
to put Chevrolet even farther ahead in performance, safety, comfort and economy

New Center-Point Steering . . . Certi-Safe Hydraulic Brakes with New Braking Ratios . . . Improved Knee-Action with New Airplane-Type Shock Absorbers . . . New, improved Rear Springing with Diagonally Mounted Airplane-Type Shock Absorbers . . . Improved Valve-in-Head Engine . . . New, rugged frame with sturdier body attachment . . . New Hand-E-Gearshift . . . New, improved Transmission with 50% more bearing support . . . New, safer, Single-Unit Exhaust System . . . New, Extra-Wide Wheel Rims . . . New, Extra-Low Pressure Tires . . . Improved carburetion with new fast idle mechanism . . . New, improved Timing Gear Lubrication . . . New, improved Air Cleaner . . . New, larger, more efficient Spark Plugs . . . New, improved Engine Front Mountings . . . New, Positive-Type Push Button starting . . . New Radiator design—33 square inches more frontal cooling area . . . New, improved Parking Brake Control . . . New, faster-filling, Vented Fuel Tank



COLORS ARE USED TO IDENTIFY THE MAIN CHASSIS FEATURES

IT'S NEW INSIDE AND OUT with fine car features never before available in the low-priced field!

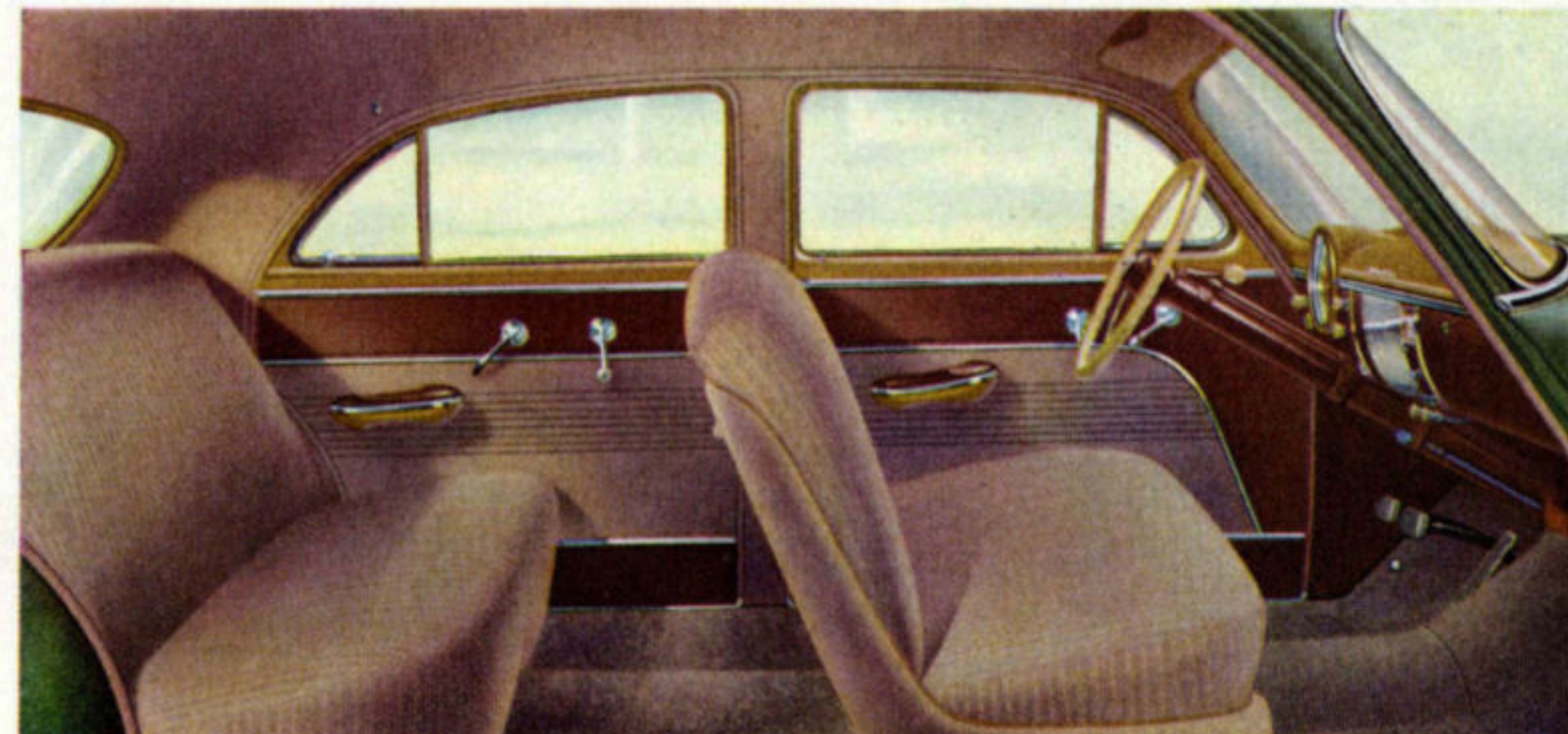


30% More Driver Vision for New Driving Safety

There's actually 30% more glass area in Chevrolet's sweepingly curved new windshield. You get a fuller, freer, safer view of the road ahead. Driver side vision is greatly increased, too, by a 32% reduction in the width of the sturdy windshield pillar area. Glass of "show-window size" all-round, gives **PANORAMIC VISIBILITY!**



The first and only push-button door handles in the low-priced field! Just push the outer button and swing the door open. It's one of many "exclusive-to-Chevrolet" advantages in the low-priced field!



Luxurious New Interiors to Match the Superb New Styling

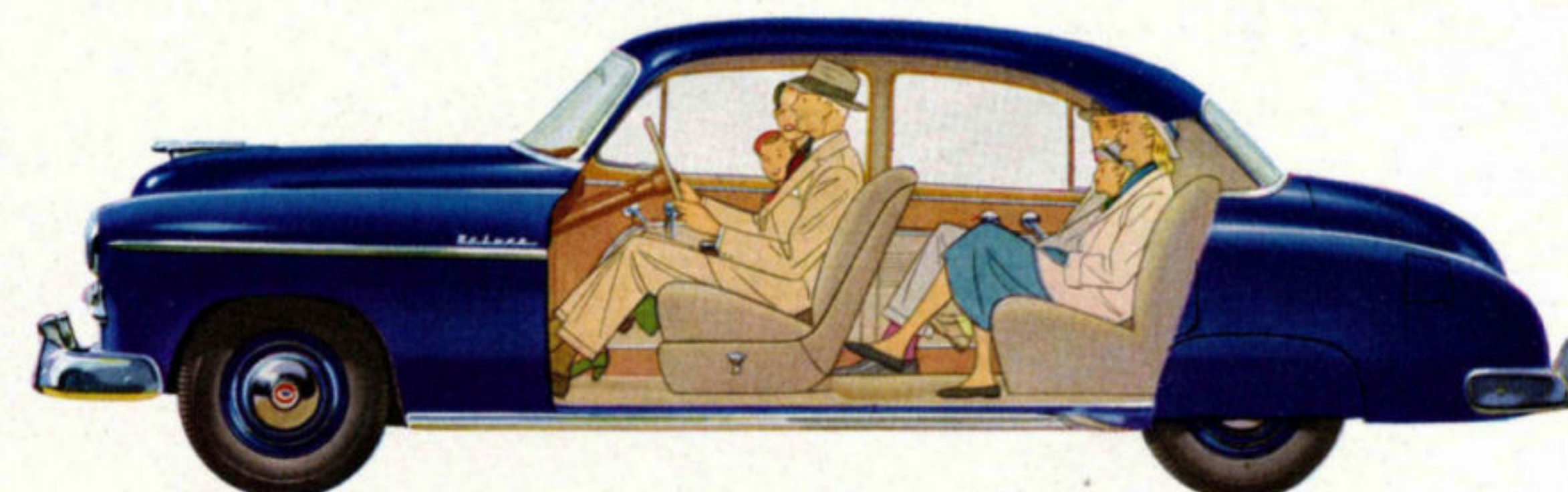
No one builds bodies like Fisher Bodies. And nowhere is Fisher construction, materials and workmanship more obviously superior than in the new Chevrolet! Outside, there is **Leader-Line Styling** distinguished by smoothly curved and graceful lines. Beneath the sparkling new colors, there is great structural strength and solidity in the longer, lower, wider body. Inside, there are exquisite new fabrics, as durable as they are smart. The instrument panel, the fittings and conveniences—all are new and finer for your greater pride and pleasure in Chevrolet ownership!

A Safer, Softer, Roomier Ride that Cradles You Between the Wheels—Plus Sensational New Handling Qualities

It's a "joy to behold," sure enough. But just wait until you drive and ride in this great new Chevrolet! Wait until you experience the wonderful new road-steadiness and smoothness, the amazing new ease and sureness of control. Then you'll know that the most famous ride in the low-priced field is more outstanding than ever!

Reasons? There are reasons galore for the revolutionary new riding comfort and driving ease. There's the new low center of gravity for greater stability. There are new extra-low pressure tires to cushion and absorb bumps. There's improved Knee-Action with new Airplane-Type Shock Absorbers to keep you on a smooth and even keel. In De Luxe models, there are new foam rubber cushion seats for cloud-like softness, and new Sound-Absorbing Roof Insulation for marvelous new quietness. There's new Rear Springing and diagonally mounted new Airplane-Type Shock Absorbers to improve riding quality and prevent sway.

There's new Center-Point Steering to give you easier, safer control minus road shock and "wander." There's the new Hand-E-Gearshift, new Push-Button Starting, Certi-Safe Hydraulic Brakes with new braking ratios, a new rugged frame—advancements and improvements everywhere to set new standards of comfort and safety!



NEW CENTER-POINT SEATING places you where the going's smoothest . . . between the wheels. You're cradled there for an entirely new kind of ride in the low-priced field—quieter, more restful, more relaxing. And because rear seats have been moved forward of the wheel housing and doors are wider, passengers can get in and out easier and more gracefully.

NEW EXTRA-WIDE "FIVE-FOOT SEATS" bring new roominess, new passenger comfort. Front and rear, there's lots of extra leg-room, too. The new built-in foot rest under the front seat allows passengers in the back seat to stretch their legs out luxuriously regardless of front seat adjustment. Headroom, shoulder-room, elbow-room . . . there's plenty for everyone.



More Storage Space, too!

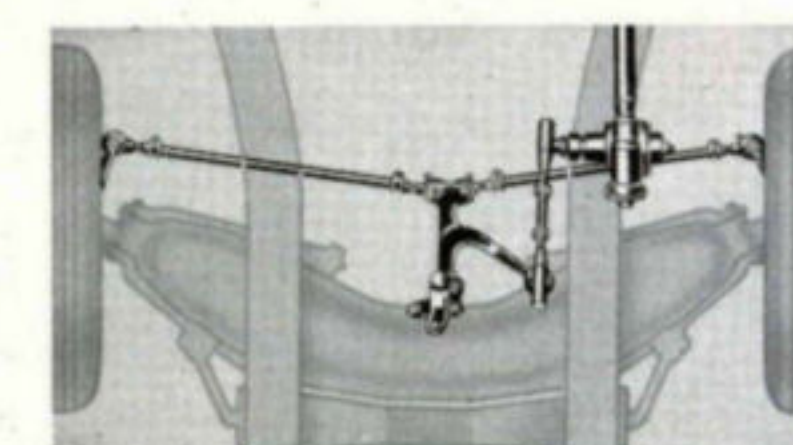
There's practically a truck-load of room in these mammoth new luggage compartments. And what a slick new lock arrangement! Turn the key and the trunk lid pops up. Raise it a little and it goes on up—and stays up—by itself. It closes easily and locks automatically. No handle to turn—ever.



Now—More Great New Chevrolet "Exclusives" in the Low-Priced Field

CENTER POINT STEERING

The steering control is centered between the wheels instead of behind the left front wheel. As a result of this advanced and more balanced steering "geometry," driving is easier,



safer, surer. Road shock and "wander" are amazingly reduced. The new Chevrolet is the only car in its field that gives you this important advancement in driver control.

BODY BY FISHER

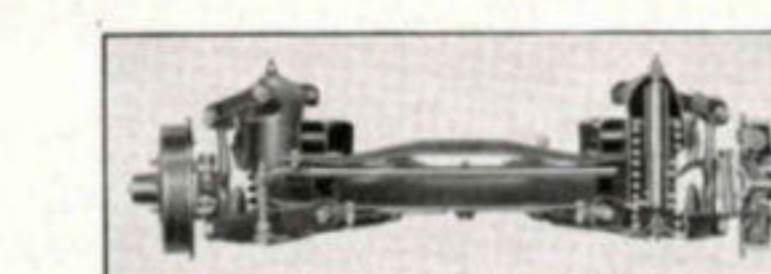
Body by Fisher—found only in Chevrolet and higher priced cars—is world-famous for styling, craftsmanship and the sturdiness and safety of Unisteel Construction. Chevrolet's all-new Body by Fisher features new strong roof and roof low construction and new double-wall rear fenders—even greater beauty and luxury!

VALVE-IN-HEAD ENGINE

Valve-in-Head is far ahead in efficiency, long life, and economical performance. Only Chevrolet among low-priced cars brings you the proved advantages of Valve-in-Head design in this thrifty, lively, world's champion engine.



UNITIZED KNEE-ACTION WITH NEW AIRPLANE-TYPE SHOCK ABSORBERS



CERTI-SAFE HYDRAULIC BRAKES WITH NEW BRAKING RATIOS

In its field, only Chevrolet has brakes with double-articulated linkage which inherently equalizes braking effort. And new braking ratios make stops swifter, surer, smoother than ever!

