

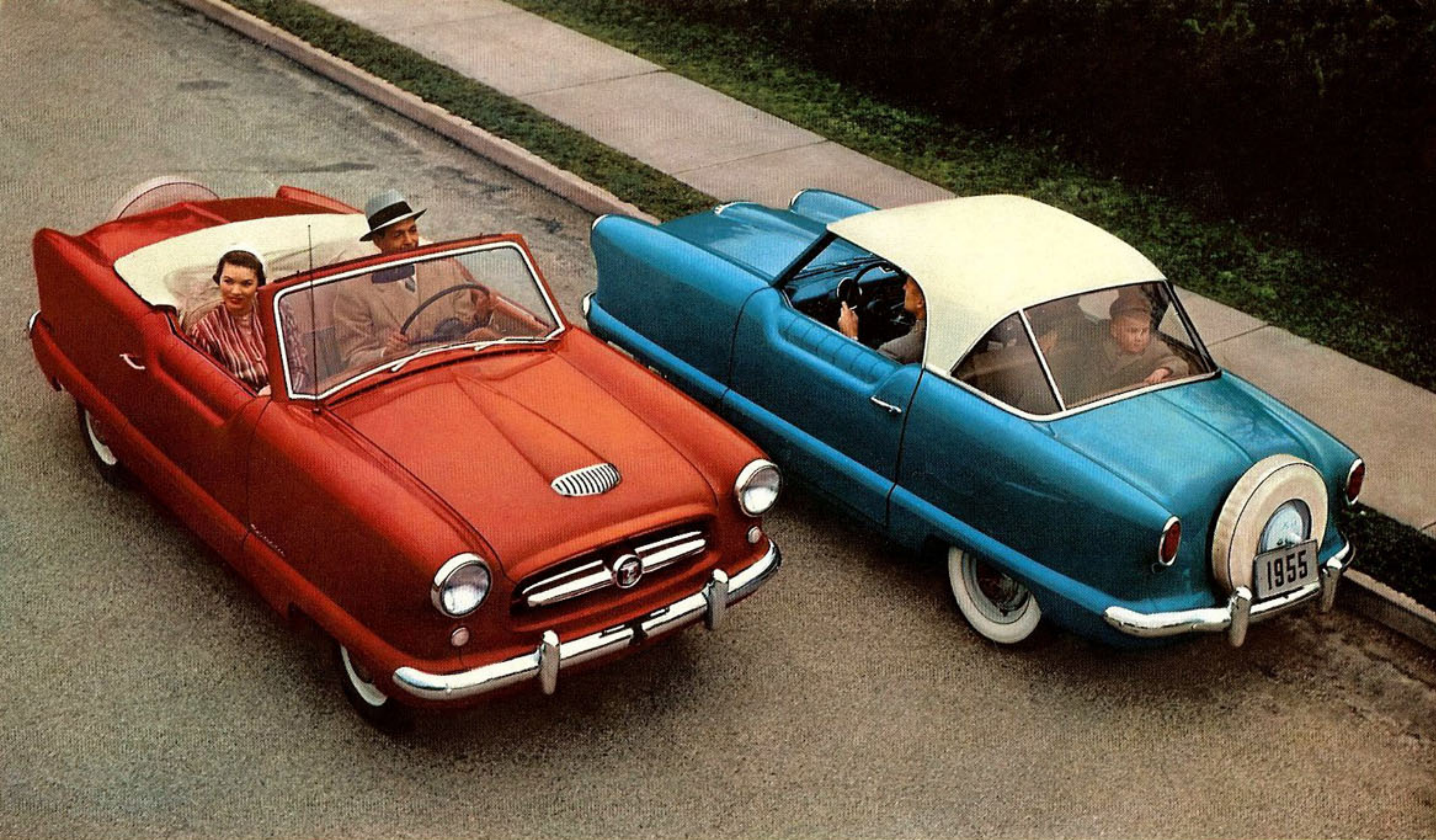
# 40 Million Miles of Raves!

The Amazing Success Story  
of America's Entirely  
New Kind of Car



1955 *Metropolitan*





# The New Metropolitan Acclaimed by Thousands!



## The Ideal Car For The College Set

A familiar sight on campuses all over the country, the Metropolitan combines the smartness, the dash and the operating economy that makes a hit with the young set. Smart as tomorrow, the Metropolitan is the college favorite today. Here is the one car designed for the young in years and the young in heart!

Early in 1954, a new kind of car appeared on the roads of America.

A car that combined — for the first time — continental sports car appeal and handling ease — with big American-car riding comfort.

It was the Metropolitan — a car actually built to the needs and wants specified by hundreds of thousands of Americans who pre-ved the first test models.

The rest is history. In the first 48 hours, an estimated four million people poured into showrooms to see the Metropolitan. Orders were so great that



## The Ideal Second Car For Every Family

The Metropolitan is the answer to the needs of America's growing number of two-car families. It's Milady's perfect companion on shopping trips . . . taking the children to school . . . for the wide range of daily family duties. And it's Dad's car for commuting and for convenient, economical business travel.

original production schedules were doubled, then increased again.

It was acclaimed by designers for its beauty. Automobile enthusiasts bought it. Young couples, retired couples bought it. It became the garage-mate of America's most expensive cars. Successful businessmen bought it — as well as thousands who appreciated the record low operating costs of a "Met", as it is affectionately known by its owners.

But judge for yourself. Read these owner reports. Then, take a ride in a Metropolitan — an experience you'll never forget.



## The Truly Economical Car For Every Use

Businessmen — salesmen — all who need a car in their work find the Metropolitan a mighty sound investment. With gas mileage of up to 40 miles a gallon, it costs less to operate. It's easier to park — more maneuverable in traffic. And the Metropolitan has plenty of room in the trunk and rear compartments for samples and packages.

and here  
are **Owners'**  
**Own Reports**





# Who drives Metropolitans and why?

Who buys Metropolitans? Just about everybody. Our sales records show that about every make of American and foreign-built car has been "traded in" for a Metropolitan. One out of every five "Met" owners is a well-to-do family possessing several cars. Four out of five owners use the "Met" as their only car.

What do they like best about it?

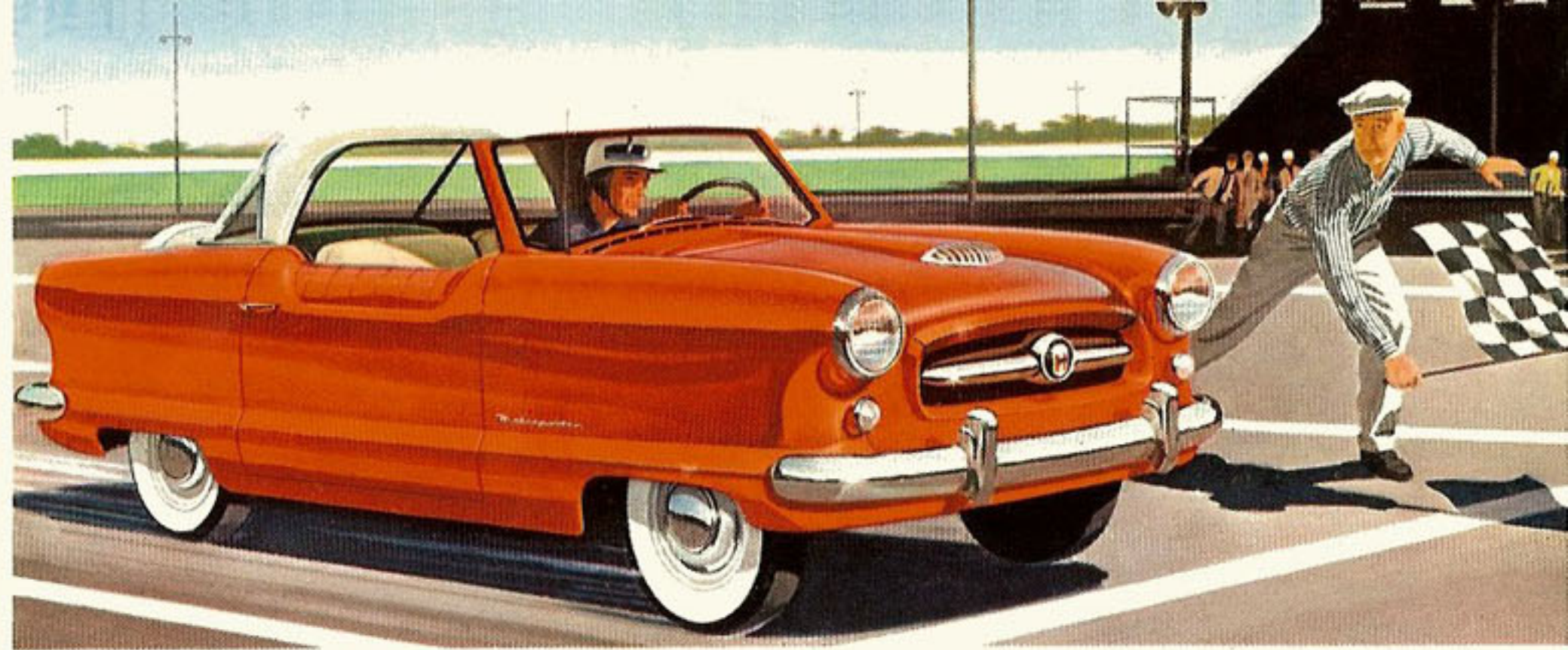
Economy, by a big vote. Then in ranking order — its handy size, appearance, handling ease, comfort, low price.

What do they use it for?

For about every driving need under the sun. For commuting — for shopping — for business — for professional work — for school — and for cross-country travel, too.

In fact, there doesn't seem to be anything that the "Met" doesn't do, superbly well.

So, whether you're doctor . . . lawyer . . . business man . . . home maker . . . regardless who you are, or what you do — if you love a fine automobile, you'll find the new Metropolitan is your answer to today's modern motoring needs.



## Performance Records Established in Two 24-Hour Official Tests!

America's newest car — the exciting new Metropolitan—received the checkered flag on two different performance tests at the Raleigh Speedway in North Carolina. Each was a round-the-clock run. In one, the Metropolitan was checked for stamina in a 24-hour endurance test at high speeds. In the other, Metropolitan economy was on trial. Both tests were under the official supervision of the National Association for Stock Car Auto Racing, Inc. Both were standard production cars selected at random by NASCAR officials who supervised the tests.

### Test 1—41.57 Miles Per Gallon of Gas, at Average Speed of 34.83 MPH

Here is amazing economy, proved in an official 24-hour *non-stop* run! A standard Metropolitan averaged 41.57 miles per gallon with an average speed of 34.83 miles an hour. The engine and car were never stopped during the 24-hour period.

### Test 2—1469.7 Miles in 24 Hours at Average Speed of 61.24 MPH

The remarkable stamina of the Metropolitan was proved conclusively in a 24-hour endurance test in which another production-built Metropolitan covered 1469.7 miles at an average of 61.24 miles an hour.

When the engines were disassembled after the tests, all parts were found to be in excellent condition. Not a drop of oil or water was added during either test run.



# Metropolitan Owners Report...

"I traded my large 8-cylinder, 4-door automobile for the Metropolitan. Since then I have enjoyed all sorts of fine, economical performance. Good riding — good steering — terrific mileage, both on a trip and around town."

**W. B. S. — New London, Conn.**

"This car out-performs all your promises. Because of its performance, simplicity, maneuverability, economy and exceptional comfort . . . the understatement of the year would be 'I'm delighted!'"

**J. M. L. — Ligonier, Pennsylvania**

"I have driven the car from St. Louis, Mo., to San Francisco and now have 2600 miles on it. I found it to be excellent in all phases, economical, very snappy and easily maneuverable. I have checked mileage and believe it to be about 38 miles for a gallon."

**W. K. S. — San Francisco, California**

"May I state that I have owned a lot of automobiles since 1904 when I first started driving, but your little Metropolitan exceeds anything in performance, ease in handling, roadability, economy and general all around performance that I have ever had the pleasure not only to own, but to drive."

**J. J. — Atlanta, Georgia**

"For years I have searched for a car that would give good mileage and economy, along with roadability, ease of handling and driver comfort. I have found it in the Metropolitan . . . During May I drove 2520 miles and averaged 38.2 M.P.G. I have three small children and there is ample room for all of us, plus the safety that the rear seat offers for children."

**L. V. D. C. — Fond Du Lac, Wisconsin**

"My husband and I bought one of your wonderful Metropolitan in Bellows Falls, Vermont and started for our home in Minnesota. Tuck bought a 1/4-ton trailer and we loaded up with 400 pounds of the wedding gifts and suitcases. We traveled the back roads over the hills and through the Alleghanies. The vital statistics are these: Our average speed was 45 m.p.h. and our top speed 65. The car got 38 miles a gallon — did not overheat, nor did it burn any oil. The acceleration, considering the heavy load, was phenomenal."

**Mrs. C. C. — Minneapolis, Minnesota**



"In the past four weeks I have put on my Met 4800 miles. Two of the trips were round trips from Vermont to Norfolk, Va. and gas mileage was 40.2 miles per gallon at 45.55 miles per hours, and mileage on stop-and-start runs was 37.75. And the comfort is great."

**R. C. W. — USS Rockwell, APA — 230**

"What I purchased as an economy car for business is now our first car for both business and pleasure. Since I have been driving the Metropolitan, I have been able to cut car operating cost in half."

**T. C. D. — Pitman, New Jersey**

"I like my Metropolitan very much and — driving 60 and 65 miles an hour — I am getting 34 miles to a gallon of gas."

**A. S. S. — Richmond, Indiana**

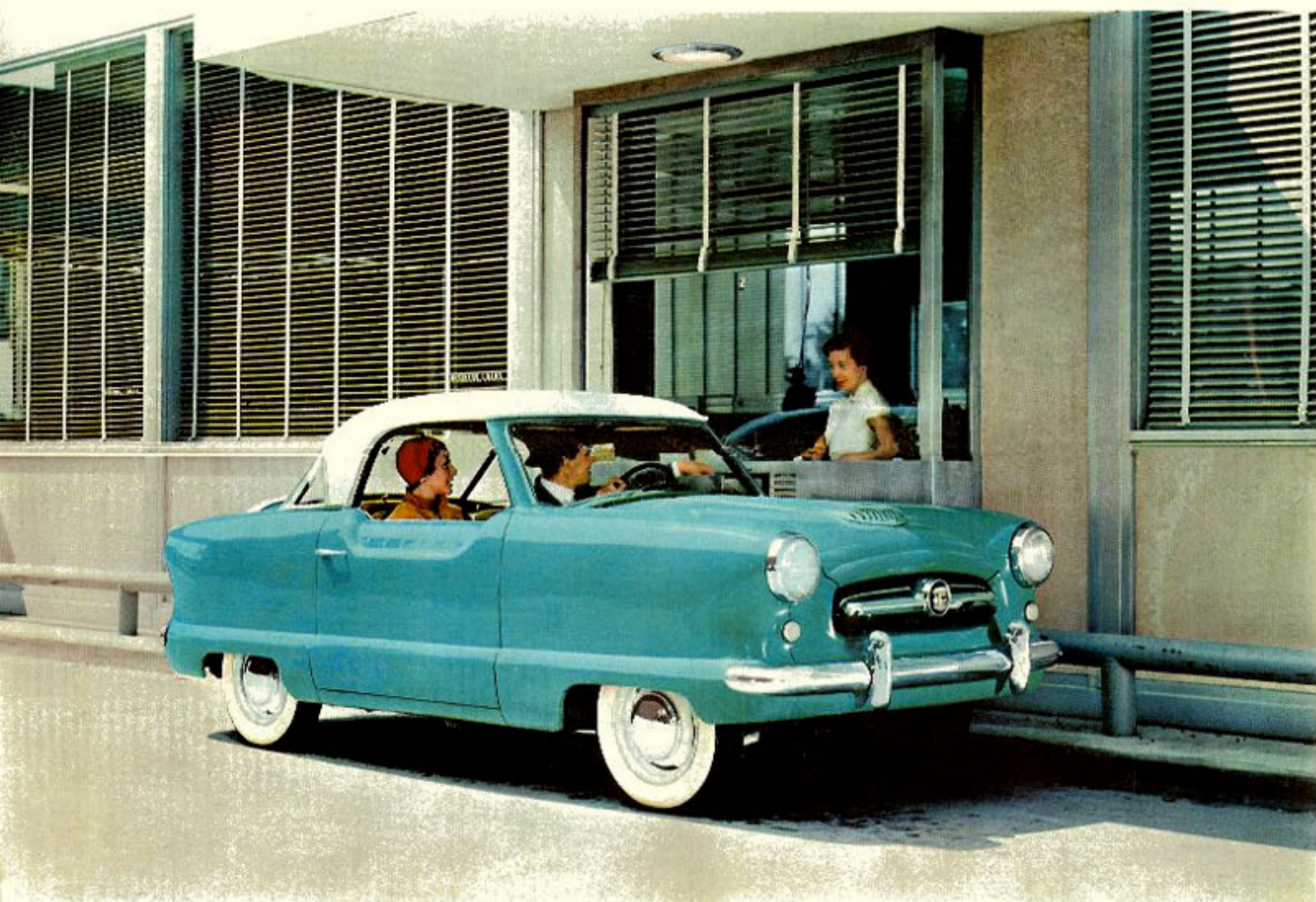




# It's a Completely New And Different Kind of Automobile



**CUSTOM INTERIOR** — full-width front seat, upholstered in genuine leather and nylon with foam rubber cushion, offers more than ample leg-room, elbow-room, head-room for even the largest of passengers. Smart instrument panel has every dial arranged for easy reading. Custom appointments add to motoring pleasure.



**THE NEW METROPOLITAN HARDTOP** — stands only fifty-four and one-half inches high. Its low price includes such equipment as directional signals, cigarette lighter, custom upholstery, and smart Continental rear tire mount.



**NEW DASHING METROPOLITAN CONVERTIBLE**. World's newest "fun car". Vinyl top flips back for open-air driving pleasure. Like the Metropolitan "Hardtop," the convertible includes many custom accessories in the lowest price of any open car.

## The Exciting New *Metropolitan* In Every Detail the Finest Car of its Size Ever Built!



**PARKS IN THE SMALLEST SPACE** required by any American car. Turning radius is far less than the average for American automobiles. Women especially like the ease with which the Metropolitan can be slipped into a tight parking space with the touch of a fingertip . . . appreciate its extraordinary nimbleness in heavy traffic.



**FAMOUS WEATHER EYE CONDITIONED AIR SYSTEM** (an outstanding Nash exclusive) is available in the new Metropolitan. This system circulates fresh air to passengers in warm weather; provides thermostatically controlled heat at the level you desire, prevents window fogging and steaming in winter.

Newest motorcar in the world, the Metropolitan, combines polo-pony nimbleness in traffic with superb comfort . . . record-breaking economy with sparkling performance. It's a pleasure car that's equally at home in the workaday world.

You who like sports-car dash and verve will, of course, be captivated by the Metropolitan.

It will be hailed by city dwellers, suburbanites — by modern young Americans who want smartness, comfort, performance and economy in the cars they drive.

It's a practical car for small families, a sensible second car for any family . . . offering up to 40 miles to the gallon!

It's dashing, road-hugging, exciting to drive . . . proudly-styled, beautifully-made . . . and it handles like a sports car!

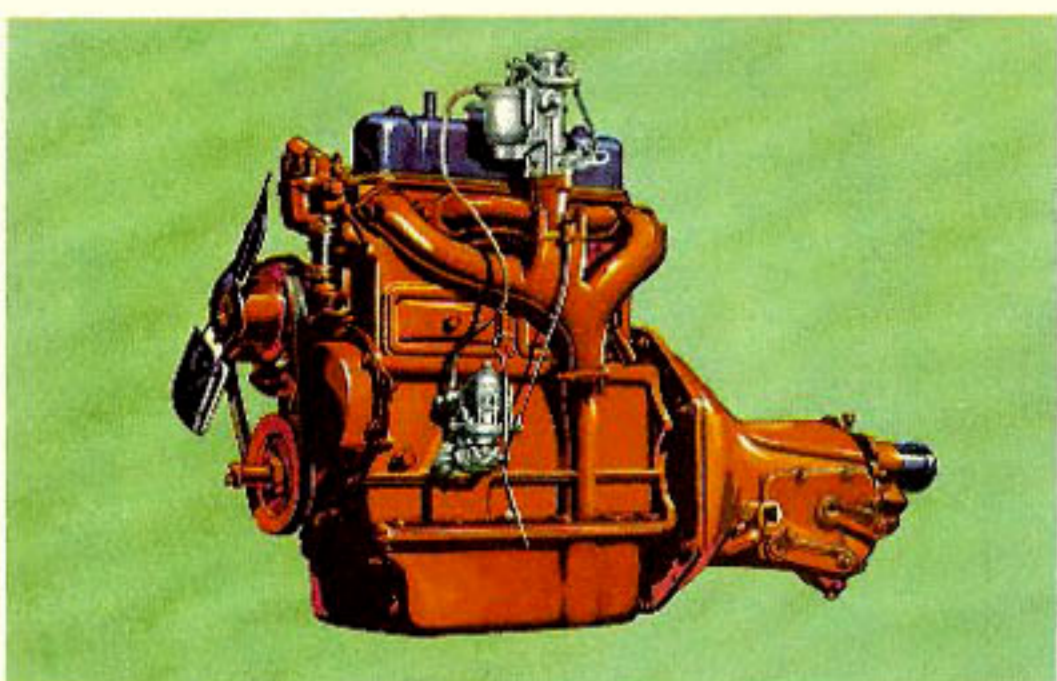
It's a perfect **BUSINESS CAR**, for those who use a car constantly — and want low operating costs combined with amazing parking ease.

Come see and drive it — the first car of its size ever built — a car of Nash quality through and through — sold and serviced by Nash Dealers everywhere.

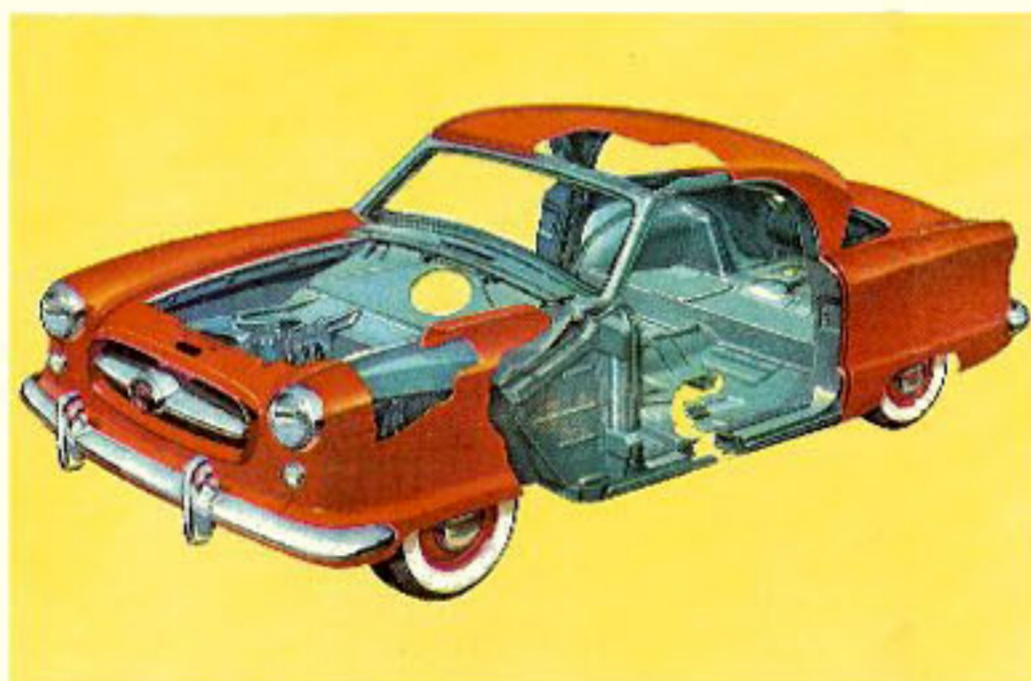
No matter where you live or what you do — don't miss the most sensational motoring experience of a lifetime . . . a drive in a new Metropolitan. See your Nash dealer today.



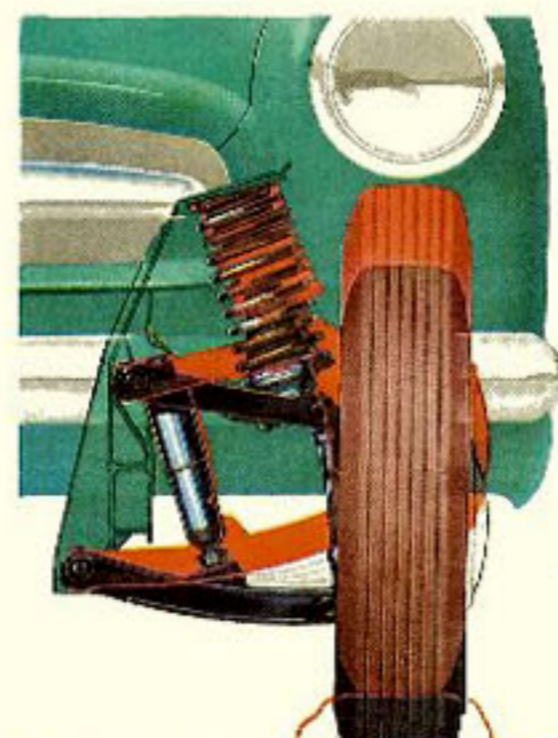
Smartest, most practical "fun car" in all the world. A new advance in the sports car trend, styled with a continental flavor that catches the eye and captures the heart. Rear willy-seat accommodates children or pets — a handy package carrier, too. The interior luggage compartment provides ample space for traveling needs.



**HEART OF THE SMART METROPOLITAN** is the world-famous Austin A-40 overhead valve engine delivering 42 horsepower at 4500 RPM. Compression ratio 7.2:1. Proved economy of up to 40 miles to the gallon. The 3-speed synchromesh transmission fully utilizes engine power for top all-around performance.



**LIFE-SAVING SAFETY** of double-rigid Nash Unitized Airframe Construction gives you sturdiness never before possible in a car of this size. Body-and-frame are welded into a single unit to give you a "double lifetime" of service. Airframe Construction is stronger, safer . . . lastingly free of body-bolt squeaks and rattles.



**EXCLUSIVE NASH AIRFLEX FRONT SUSPENSION** plus low center of gravity and scientific distribution of weight, combine to give the Metropolitan unusual "cornering" stability and ride control.



The New *Metropolitan*

**SOLD AND SERVICED  
BY NASH DEALERS  
EVERYWHERE**



# NASH *Metropolitan* SPECIFICATIONS

**BODY** — Double Strength Single Unit Car Construction, Bonderized for rust protection. Wheelbase 85", Overall length 149½", Width 61½", Loaded Height 54½", Front Tread 45⅝", Rear Tread 44⅜", Minimum Road Clearance 6⅜" at rear axle.

**MECHANICAL** — Overhead valve Austin A-40 engine, In-line 4 cylinders, Displacement 73.17 cu. in., Bore 2⅞", Stroke 3½", 42 BHP @ 4500 RPM, Torque 62 lb. ft. @ 2400 RPM, 7.2:1 Compression Ratio. Single Zenith down-

draft carburetor. Oil-bath type carburetor air cleaner. Four-ring aluminum pistons. Deep Coil Ride suspension. Coil Springs at front, semi-elliptical rear springs. Hotchkiss type power drive. Hydraulic internal expanding Girling brakes. Total effective brake lining area, 76.8 sq. in. Three-speed synchromesh transmission, steering post shift. Hydraulically operated clutch linkage. Rear axle ratio 4.6:1. Tires, 5.20 x 13 -4 ply. 10½ gallon fuel tank. Shipping weight, 1835 lb. (Convertible), 1875 lb. (Hardtop). Crankcase capacity (less filter) 4 qts. Cooling

system capacity (with heater) 8 qts. Electrical system, 12-volts.

**EQUIPMENT**—Standard: Directional turn signals. Electrically operated dual windshield wipers. Cigarette lighter. Dual sun visors. Foam rubber front seat cushion. Genuine leather and nylon upholstered front seat back and cushion. Vinyl plastic door trim, side panel, and rear seat upholstery. Continental rear tire mount and tire cover. Optional extra cost: Weather Eye Heating and Ventilating System. Custom radio. White sidewall tires. Partial flow oil filter.

AMERICAN MOTORS CORPORATION, WHOSE POLICY IS ONE OF CONTINUOUS IMPROVEMENT, RESERVES THE RIGHT, HOWEVER, TO DISCONTINUE OR CHANGE SPECIFICATIONS, MODELS OR PRICES AT ANY TIME WITHOUT NOTICE AND WITHOUT INCURRING OBLIGATION.

**THE EXCITING**

*Metropolitan*

**A New Kind of Car in Convenience, Economy and Performance**

NASH MOTORS DIVISION OF AMERICAN MOTORS CORPORATION, DETROIT 32, MICHIGAN

SEE AND  
DRIVE THE  
NEW METROPOLITAN  
AT YOUR NASH  
DEALER'S