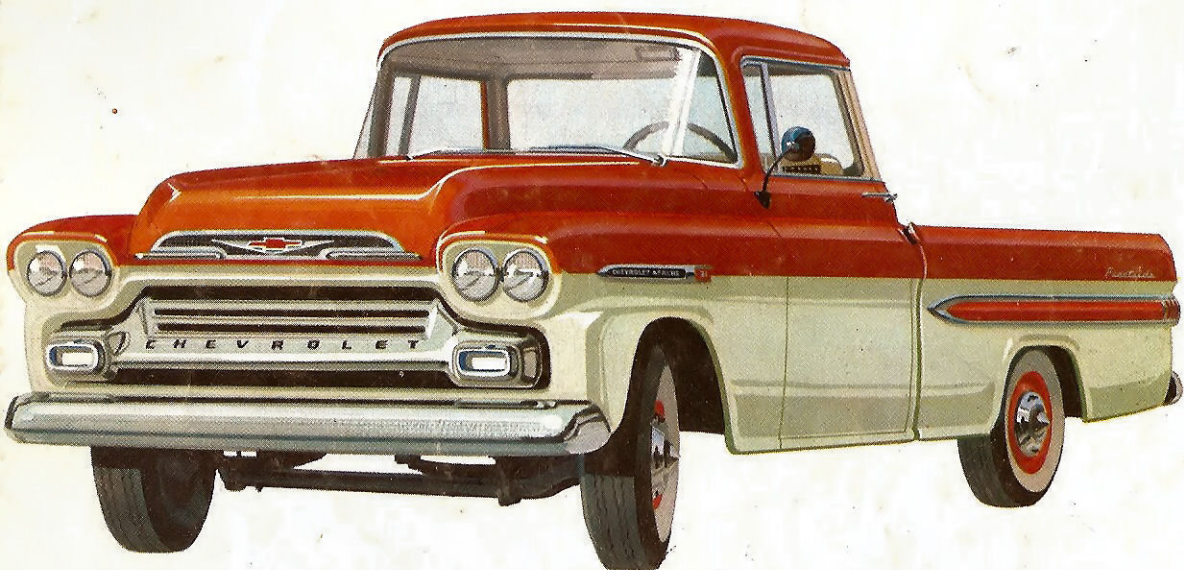


**TASK
FORCE
59**

CHEVROLET

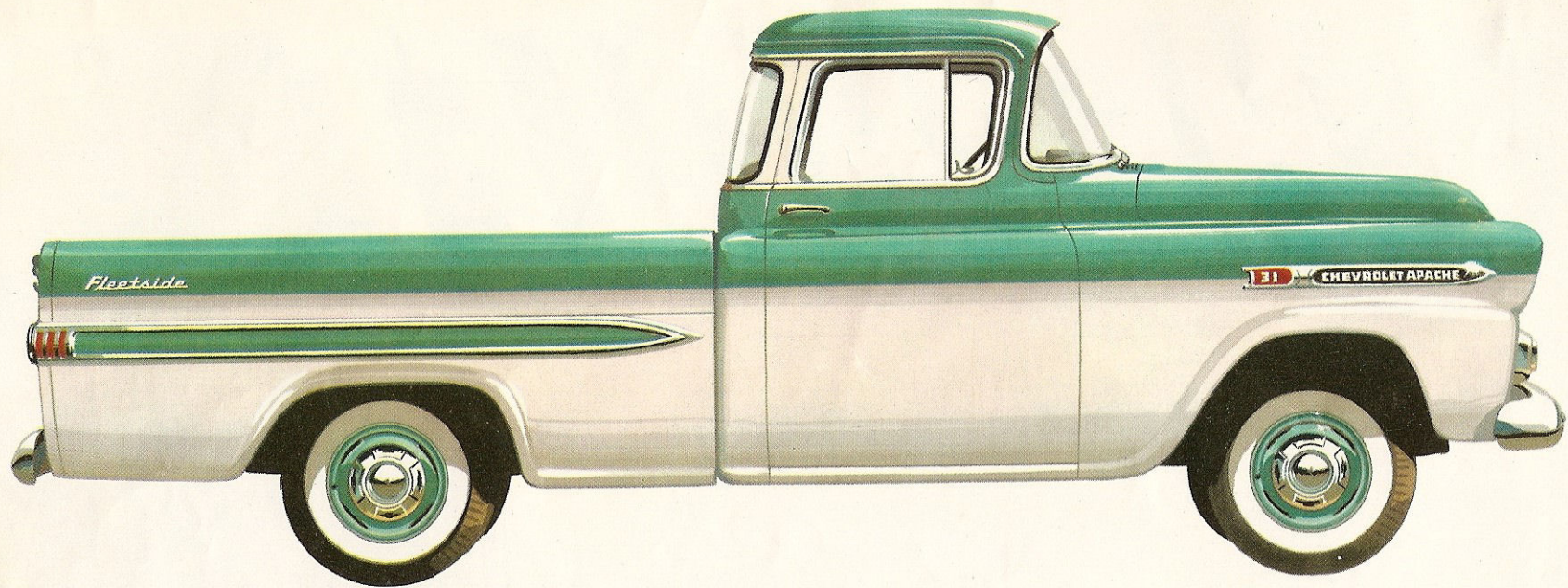
PICKUPS



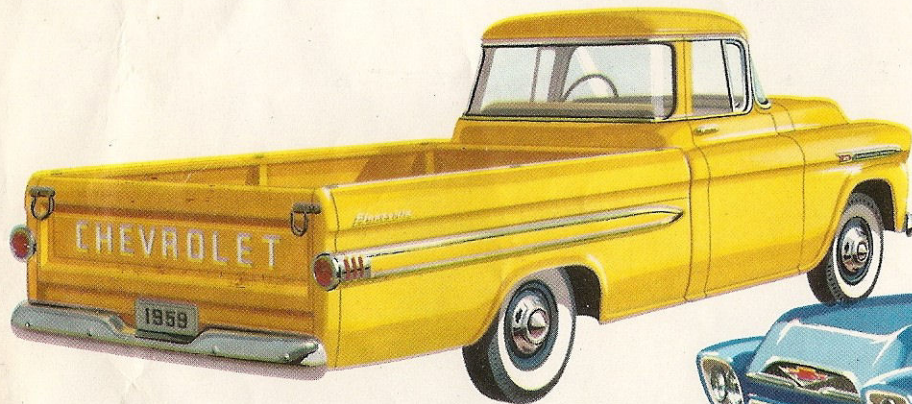
**THE
"BIG WHEEL"
IN TRUCKS**



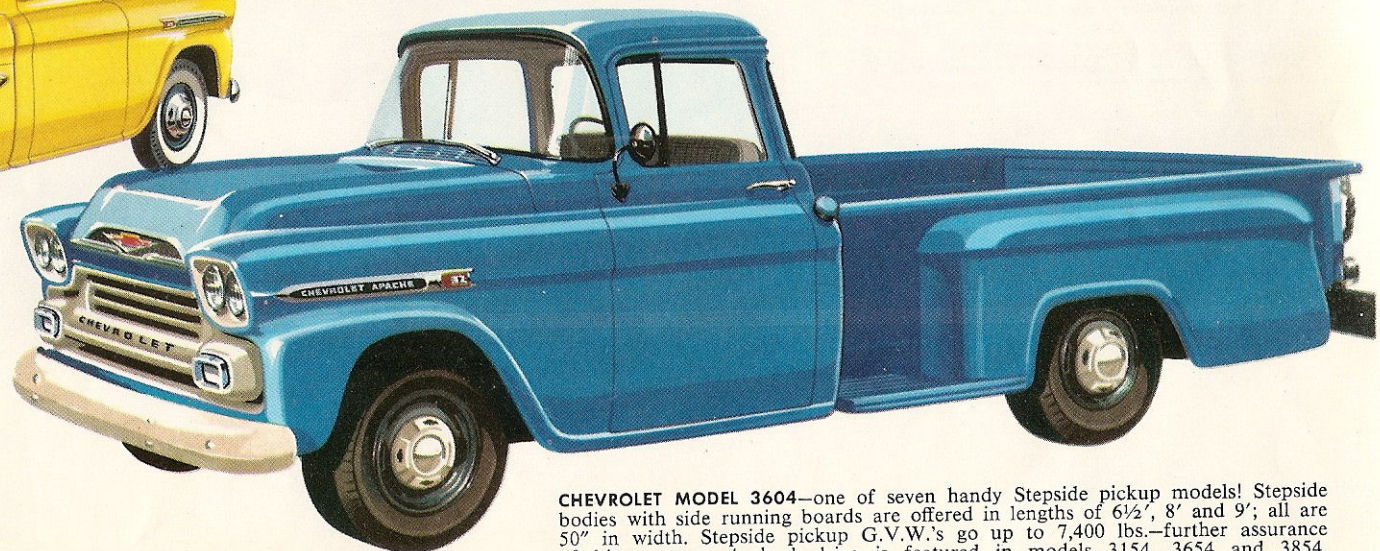
First in sales since '37!



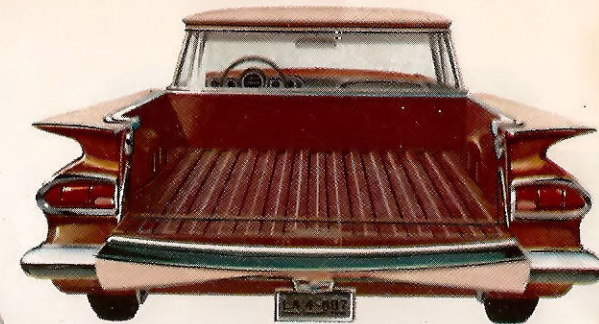
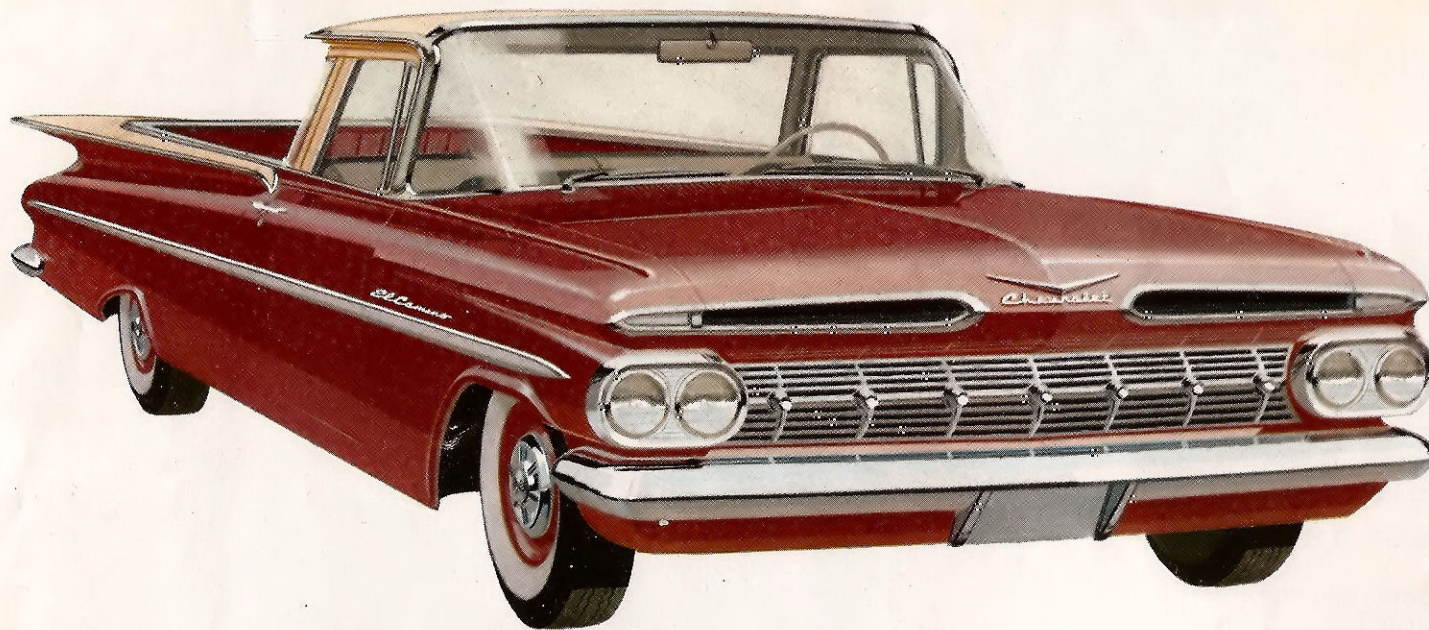
CHEVROLET MODEL 3134—one of five dashing Fleetside pickup models! They come in a wide choice to suit many needs; maximum G.V.W.'s range from 5,000 lbs. to 7,300 lbs. . . . bodies in lengths of 78" or 98" (and a full 6' in width) provide up to 75.6 cubic feet of load space. And you get 4-wheel drive with Fleetside models 3184 and 3684.



GOOD LOOKER, WILLING WORKER—that's the 1959 Chevrolet Fleetside pickup. That full-width tailgate is *graintight*, equipped with adjustable, rattle-free latches, and it's solidly constructed. Note the low loading height that makes your work easier. And the smooth-lined styling of those side panels will help build your business prestige.



CHEVROLET MODEL 3604—one of seven handy Stepside pickup models! Stepside bodies with side running boards are offered in lengths of 6½', 8' and 9'; all are 50" in width. Stepside pickup G.V.W.'s go up to 7,400 lbs.—further assurance of big cargoes. 4-wheel drive is featured in models 3154, 3654 and 3854.

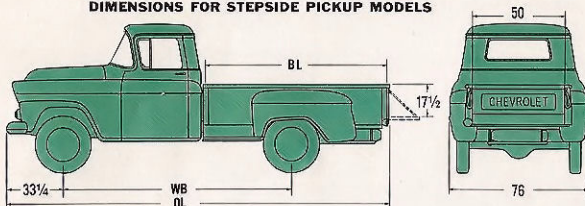


EL CAMINO

Here's an all-new vehicle you have to see and drive to believe! In both appearance and performance, Chevrolet's El Camino offers the best qualities of a fine passenger car. With its low, trim lines, sparkling grille, slim cab pillars and broad windshield, it's the handsomest of all commercial vehicles, by far. The unique X-built Safety-Girder frame, 119" wheelbase and Full Coil suspension combine to give it unparalleled riding comfort and handling ease.

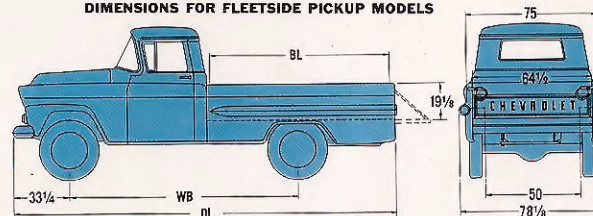
But this new vehicle has a dual personality; a thorough-going capacity for hard work that fully complements its striking beauty. Equipped to handle heavy delivery chores with ease, the El Camino provides a man-sized pickup box 76 $\frac{1}{4}$ " long, 64 $\frac{1}{4}$ " wide, 12 $\frac{3}{4}$ " deep. Body side panels are double-walled to protect the smooth exterior appearance. Extra body strength comes from a husky steel-ribbed floor; a grainless tailgate fits snugly and, when lowered to a horizontal position, helps support long loads solidly. In power, too, the El Camino is designed for both work and pleasure with either a Chevrolet thrifty 6 or an efficient V8 beneath the hood. There's never been anything quite like the El Camino before; it's an ideal blend of passenger car glamor and truck utility that will add enjoyment to your tasks and status to your business.

DIMENSIONS FOR STEPSIDE PICKUP MODELS



MODELS	WB	OL	BL
3104	114	188 $\frac{1}{2}$	78"
3204	123 $\frac{3}{4}$	208 $\frac{1}{2}$	98
3604	123 $\frac{3}{4}$	208 $\frac{1}{2}$	98
3804	135	218 $\frac{1}{2}$	106 $\frac{1}{2}$

DIMENSIONS FOR FLEETSIDE PICKUP MODELS

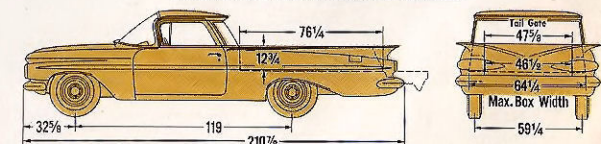


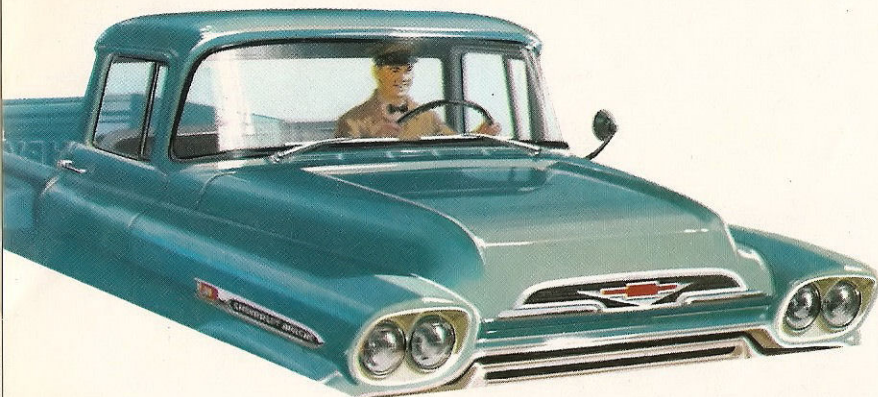
MODELS	WB	OL	BL
3134	114	188 $\frac{1}{2}$	78"
3234	123 $\frac{3}{4}$	209 $\frac{1}{2}$	98
3634	123 $\frac{3}{4}$	209 $\frac{1}{2}$	98

Take your pick from the widest range of pickup models ever offered by Chevrolet. This expanded pickup line provides new might where it counts, new money-saving power under the hood! Extra measures of safety and durability stem from advancements such as more rigid cab construction and bigger brakes in Series 31 and 32. Famous Chevrolet truck economy is better than ever with an improved version of the Thriftmaster 6 that features a new camshaft designed to give extra efficiency and torque output in the normal operating range. The Thriftmaster, rated at 135 h.p., with fuel-saving 8.25 to 1 compression ratio, is standard in all pickup models. Optional at extra cost is the toughest V8 yet developed

for light-duty trucks—the Trademaster, with 160 h.p., 283 cubic inches of displacement and short-stroke design. And Chevrolet pickups for '59 offer new appearance advantages, too—new interiors, new exterior colors (five of them!) and styling refinements that add to Chevy's handsome, broad-shouldered look. *Everything* is up to the minute and ready for work: husky parallel-design frame, tubeless tires, dual headlamps, high-level interior ventilation, and options and accessories that meet almost any need. G.V.W.'s go as high as 7,400 lbs., and you can carry up to 2,800 lbs. of payload in big Series 38 models! Here are the bright new answers to *all* the jobs that call for pickup trucks!

DIMENSIONS FOR EL CAMINO MODELS

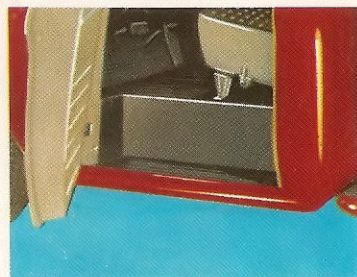
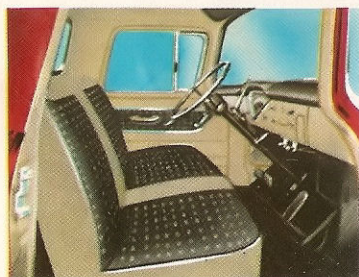




IT'S A PLEASURE TO DO BUSINESS IN THE CAB OF A MODERN CHEVY TRUCK!

1959 Chevrolet truck Flite-Ride cabs were designed with the driver in mind; his safety, comfort and convenience are provided for more completely than ever! Here is *unitized cab construction*, a special way of putting parts together to *stay* together firmly through years of hard use. A new more rigid front cross sill adds even more strength. Chevrolet provides maximum on-the-job safety with the broad, sweeping Panoramic windshield that gives 1,000 square inches of viewing area. A Full-View wrap-around rear window* also adds to safe visibility. Driver-comfort is a Chevy strong point as well; the Nu-Flex seat with deep-comfort coil springs gives firm yet soft support, and there's plenty of leg room and head room to put the driver at ease. Modern High-Level ventilation keeps interior dry, clean and comfortable. And everything's *convenient*—the stylish No-Glare instrument panel is easy to see and reach and the steering wheel with its recessed hub is in just the right position for easy driving. With five new exterior colors in the line, these are the best looking truck cabs ever!

**Optional at extra cost.*



NEW CUSTOM CAB INTERIOR features top-quality upholstery in silver beige with charcoal grey, blue or green to harmonize with exterior. Custom cabs give you foam rubber seat cushions and backrests, bright metal control knobs and window moldings, armrest, sunshade and cigarette lighter.

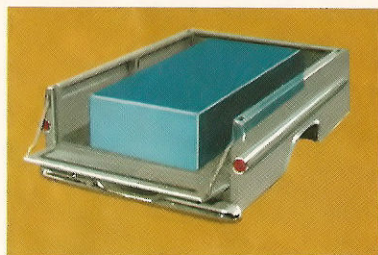
CONCEALED SAFETY STEP. Here's a safety feature you're sure to like. Chevrolet truck safety steps help provide easier and safer entry into the cab in all kinds of weather.



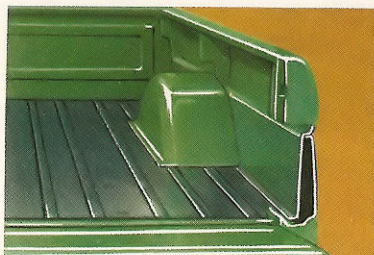
NEW DE LUXE CAB INTERIOR. Interiors are more handsome than ever, with a color scheme that displays a combination of silver beige and charcoal. The comfortable Nu-Flex seat is upholstered in durable, easy-to-clean vinyls. A centrally located ash tray and a locking dispatch box are provided for the driver's convenience.

STEPSIDE AND FLEETSIDE . . . TWO PICKUP BODIES THAT KNOW HOW TO WORK

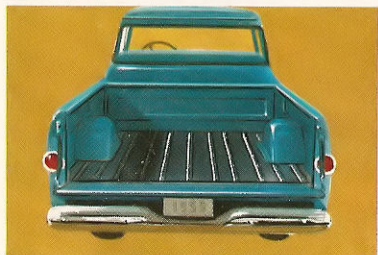
The Chevrolet truck line for '59 offers all the answers to all the jobs that call for pickup trucks. Two basic body styles—Fleetside and Stepside—are available in a broad choice of sizes and capacities so that you can get just what you need! Both body types are big and roomy to take on bulky cargoes. With tough select wood floors, steel skid strips and gaintight tailgates, they're built to take it; payload capacities range from 1,500 lbs. in Series 31, up to 2,800 lbs. in Series 38. Spacious Fleetside bodies come in lengths of 6½ and 8 feet and are a full six feet wide. Stepside bodies are king-sized also: 6½, 8 and 9 feet long and 50 inches wide. Fleetside bodies give you the styling advantages of sweeping side panel lines; handy Stepside bodies offer the convenience of side running boards. Both bodies are available on 4-wheel drive models if your work calls for a truck that can go almost anywhere off the road.



EXTRA WIDTH. Fleetside bodies are a full six feet in width. They'll accommodate standard 4' x 8' sheets of building material and still give you room along the sides for many extra items of payload!



DOUBLE-WALLED SIDES. The lower portions of the Fleetside side panels are double-walled. This feature adds extra strength and protects the smooth exterior body surface from inside dents.



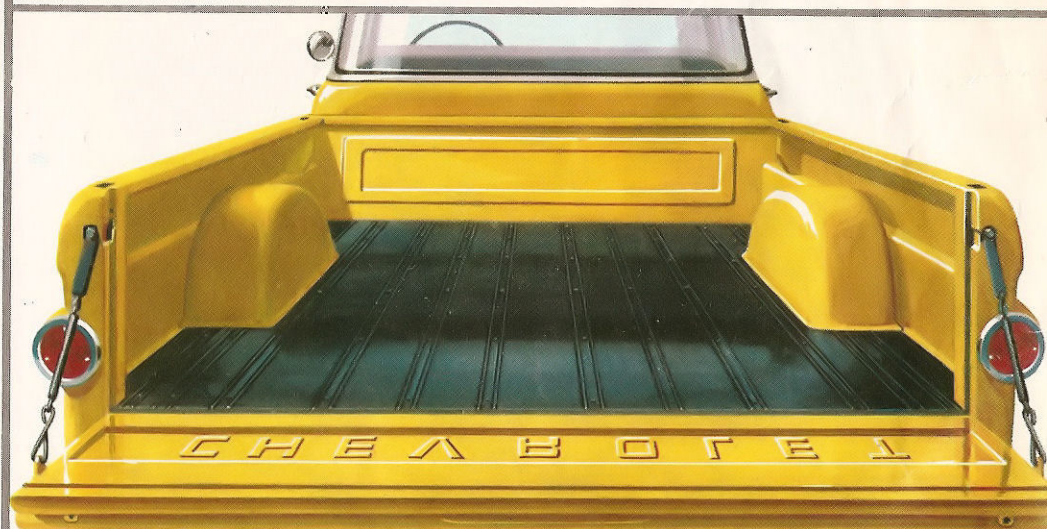
TOUGH FLOORS. Floors of all Chevrolet pickups are constructed of the best wood known for the purpose. Floorboards resist chipping, give surest footing for animal cargoes, even when wet, and the individual boards are replaceable.



GRAINTIGHT TAILGATE. Both Fleetside and Stepside models provide tailgates that are built to fit tightly and snugly. Thus, you can count on a minimum of cargo loss from the spillage of bulk loads, such as grain or sand.

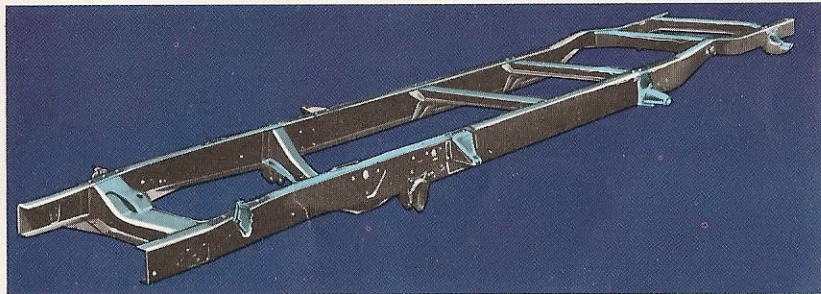


EXTRA CONVENIENCE. Side loading is a snap with the Chevrolet Stepside bodies. The running boards on each side are positioned just right to make it as easy as possible. And the loading heights of the Fleetside and Stepside bodies are low. This takes much of the work out of your cargo handling; less bending and lifting is required.

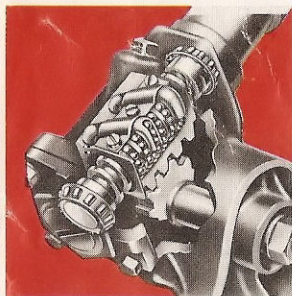


EXTRA STURDINESS. Tailgates of Fleetside and Stepside bodies are solidly constructed; when lowered to a horizontal position, they support extra-long loads with a minimum of "give." A new rattle-free latch is provided on Fleetside bodies. It is adjustable to keep the tailgate fitting tight when closed. Fleetside and Stepside bodies also provide reinforced pockets for the addition of special stake racks to increase the bulk carrying capacity of the bodies.

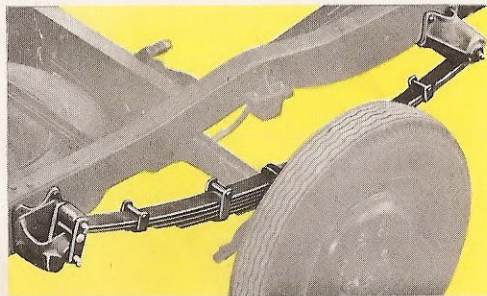
TOUGH TRUCK CHASSIS



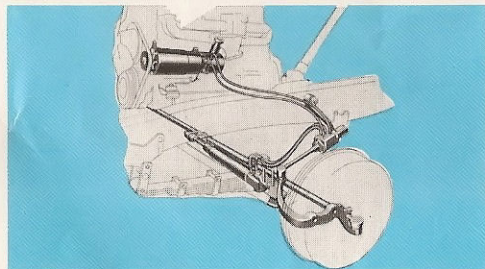
STRONGEST OF PICKUP FRAMES. Chevrolet truck parallel-design frames can take it on or off the road. Parallel side member construction makes these frames extra husky . . . helps provide long, trouble-free truck life . . . adds to the safety of the driver and cargo. Alligator-jaw cross members attached to the deep-channel side rails give additional protection against twisting and help maintain frame alignment.



STEERING'S EASY. Ball-Gear steering featured on all models gives quick and easy response. Scores of polished steel balls minimize friction—keep steering light, firm and positive. Low-friction joints make steering easy and give a surer feel of the road for safer vehicle control.



SPRINGS THAT CUSHION THE LOAD, SOFTEN THE RIDE. Resilient long-leaf springs, both front and rear, can be matched to your job. Two-stage rear springs are provided; first stage functions when truck is unloaded or lightly loaded. Second stage meets the requirements of heavy loads.

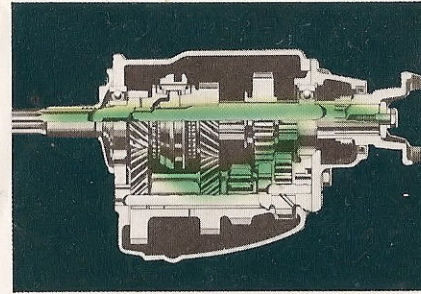


OPTIONAL* POWER STEERING. Chevrolet's power steering, optional on all models, gives new ease and fingertip steering because up to 80% of the work is done by hydraulic power. Maneuvering in small spaces is exceptionally easy and highway travel is less fatiguing.

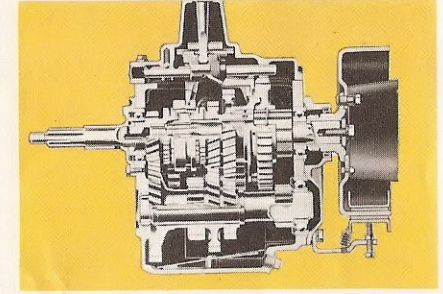


BIGGER, SAFER BRAKES. Torque-Action brakes provide large lining area for extra braking ability. They're designed to give safe, straight-line stops with minimum pedal pressure. *Hydrovac power brakes*, available at extra cost, supply over one-third of braking effort for easier driving.

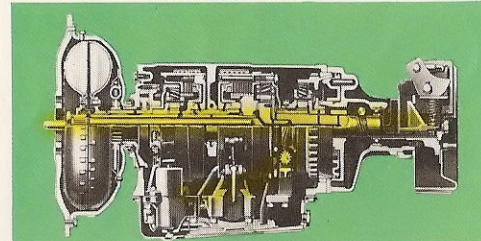
DURABLE DRIVE-LINE PARTS



3 - SPEED SYNCHRO - MESH TRANSMISSION. Carburized and shot-peened gears provide extra strength and long life. Wide-faced helical gears mesh smoothly, run quietly. Standard in Series 31, 32 and 36 models. Heavy-duty 3-speed is optional* on Series 31 through 38 conventional drive models.

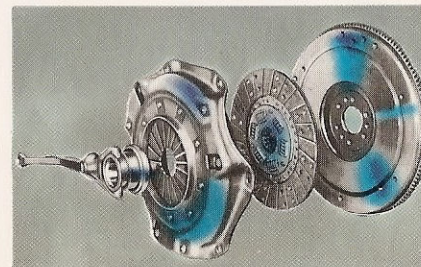


HEAVY-DUTY 4-SPEED Synchro-Mesh design makes hauling easier by eliminating double clutching. It's rugged and dependable; provides 7.06:1 low gear ratio. Power take-off opening on left side. Standard on 4-wheel drive and Series 38 models, optional* on other Series 31 through 36 models.

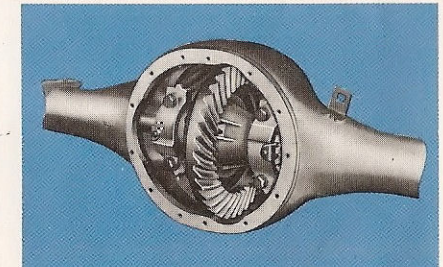


HYDRA-MATIC TRANSMISSION. It saves on maintenance with a fluid coupling that minimizes costly drive-line repairs . . . and it takes the hard work out of driving and adds to safety. You can forget shifting and concentrate on driving. Optional* on all Series 30 conventional drive models.

*Extra cost.



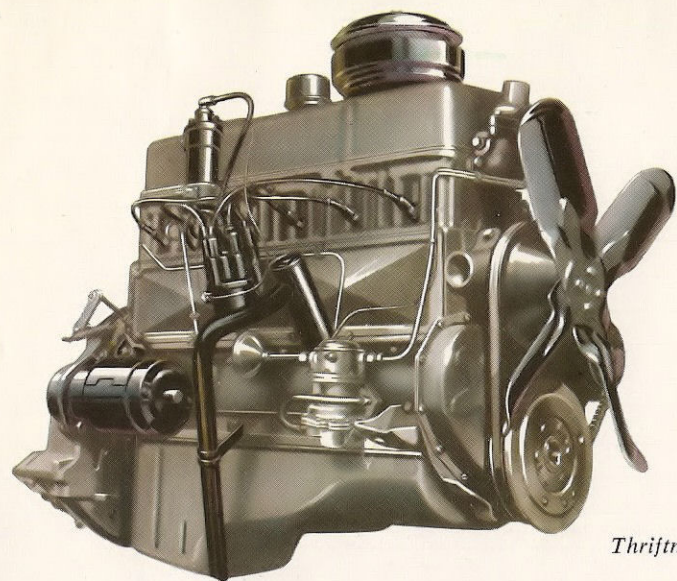
SMOOTH - WORKING CLUTCH. Diaphragm spring clutch is standard in all Chevrolet pickups. Its positive gripping action smooths the engagement of engine and drive line through easy pedal action. Tough construction means well balanced power transmission and long dependable clutch life.



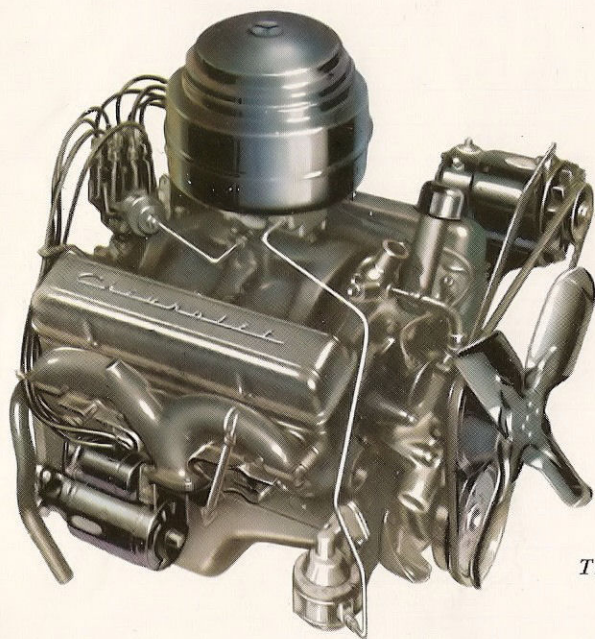
RUGGED REAR AXLE. It's strong and quiet-running with hypoid gears that are efficiently matched with engine power for top performance at low cost. Semi-floating axles have a 3,300-pound rating in Series 31 and 32. Full-floating axles are rated at 5,000 pounds in Series 36 and 7,200 pounds in Series 38.

POSITRACTION NOW AVAILABLE

Here's an extra-cost option for Series 31 and 32 models that enables them to do the job regardless of weather, road or terrain conditions. Positraction rear axle directs the power to whichever rear wheel is getting the best traction. It thereby enables wheels to *grip* on any road surface, gives you safer control of the vehicle!



Thriftmaster 6



Trademaster V8

POWERED FOR LOW-COST GET UP AND GO!

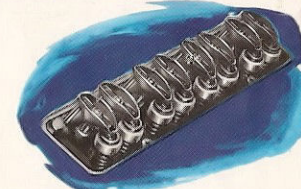
Dependable power that keeps fuel and maintenance expense way down is one big reason Chevrolet has remained America's best selling truck line for more than twenty straight production years. And 1959 Chevy power is even thriftier, even tougher! Consider the Thriftmaster 6, for example. Standard in all pickups, this is the most popular power-plant in the history of hauling. It's famous for economy, and this year it's set for even bigger savings with new features which include a new camshaft design that boosts efficiency and torque in the normal operating range. High 8.25 to 1 compression ratio is another fuel-saving factor in the Thriftmaster, and there's plenty of hard-working power, with horsepower rated at 135. The Trademaster V8, optional at extra cost, is a better-than-ever light-duty engine, too. It features thermostatic by-pass cooling for uniform, fuel-saving warm-up, 160 h.p., 283 cubic inches of displacement, 8.5 to 1 compression ratio, and the most modern and efficient kind of short-stroke design. Like the Thriftmaster 6, the Trademaster V8 is designed for low operating and maintenance costs; you'll save with premium components such as long-lasting Aldipped exhaust valves and fuel-rationing precision distributor adjustment!

NEW FOR SERIES 31 AND 32! MAXIMUM-ECONOMY OPTION

Here's a special option for haulers who are looking for *lower operating costs* than they've ever known before! It's a unique economy team, consisting of special economy carburetor and rear axle with 3.38 to 1 ratio. This feature combination helps assure fewer engine revolutions per mile . . . more miles per gallon of gas and less engine wear!



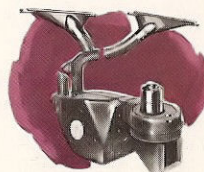
Forged crankshafts in Chevrolet's thriftier 6's and V8's are made of high-quality steel with overlapping journals for maximum strength. They're dynamically balanced for smoothness and long bearing life.



Valve-in-head design of both Thriftmaster 6 and Trademaster V8 is *tops* for efficiency and puts economy first. Maintenance is simpler and less costly, too; it's one more reason you'll like Chevy pickup power!

CHEVROLET ACCESSORIES LOOK AFTER ALL YOUR NEEDS . . .

A wide range of accessories is available to complement Chevrolet truck standard and optional equipment. You'll find high-quality radios, heaters, windshield washers, sun visors, grille guards, power brakes, mirrors, safety lights, bumper guards, wheel rings, directional signals and air conditioning—all aimed at your on-the-job comfort, safety and convenience.



Heater



Radio



Hydrovac
Power Brake



Windshield Washer

SPECIFICATIONS

		SERIES 31				SERIES 32				SERIES 36				SERIES 38			
TYPE		Pickup				Pickup				Pickup				Pickup			
MODEL; WB (in.); CA (in.) or BODY LENGTH		Model	Body Type	WB		Model	Body Type	WB		Model	Body Type	WB		Model	Body Type	WB	
		3104	78" Stepside	114		3204	98" Stepside	123¼		3604	98" Stepside	123¼		3804	9' Stepside	135	
		3134	78" Fleetside	114		3234	98" Fleetside	123¼		3634	98" Fleetside	123¼					
GROSS WEIGHT RATINGS	GVW	4000 lb. to 5000 lb.				4000 lb. to 5000 lb.				5200 lb. to 6900 lb.				6200 lb. to 7000 lb.			
AXLE, FRONT	Rating	2200 lb.				2200 lb.				3000 lb.				3500 lb.			
AXLE, REAR	Rating	3300 lb.		Positraction, 3300 lb.		3300 lb.		Positraction, 3300 lb.		5000 lb.		7200 lb.					
	Ratio	3.90	3.70	3.38	3.92 to 1		3.90	3.70	3.38	3.92 to 1		4.57 to 1		5.14 to 1			
BRAKES, SERVICE	Size Front	11" x 2"				11" x 2"				12" x 2"				12" x 2"			
	Size Rear	11" x 2"				11" x 2"				12" x 2"				14" x 2½"			
	Total Lining Area	167 Sq. In.				167 Sq. In.				184 Sq. In.				228 Sq. In.			
	Booster	●				●				●				7" Hydrovac			
BRAKES, PARKING	Location	Rear Wheels				Rear Wheels				Rear Wheels				Propeller Shaft			
ENGINE	Type	Thriftmaster, 6 Cyl.		★Trademaster V8		Thriftmaster, 6 Cyl.		★Trademaster V8		Thriftmaster, 6 Cyl.		★Trademaster V8		Thriftmaster, 6 Cyl.		★Trademaster V8	
	Displacement	235.5 Cu. In.		283 Cu. In.		235.5 Cu. In.		283 Cu. In.		235.5 Cu. In.		283 Cu. In.		235.5 Cu. In.		283 Cu. In.	
	Gross Horsepower	135		160		135		160		135		160		135		160	
	Gross Torque	217 Ft.-lb.		270 Ft.-lb.		217 Ft.-lb.		270 Ft.-lb.		217 Ft.-lb.		270 Ft.-lb.		217 Ft.-lb.		270 Ft.-lb.	
	Clutch Dia.; Facing Area (sq. in.)	10"; 100.5		11"; 123.7		10"; 100.5		11"; 123.7		10"; 100.5		11"; 123.7		10"; 100.5		11"; 123.7	
	Cooling Capacity	17 Qt.		17½ Qt.		17½ Qt.		18 Qt.		17 Qt.		17½ Qt.		17½ Qt.		18 Qt.	
FRAME	Side Rail Dimensions	6" x 2¼" x ¾"				6¾" x 2¼" x ¾"				6¾" x 2¼" x ¾"				7¼" x 2¾" x ⅞"			
	Section Modulus, Inches Cubed	2.54				3.37				3.37				5.70			
FUEL TANK	Capacity	17½ Gallons				17½ Gallons				17½ Gallons				17½ Gallons			
GENERATOR	Volts; Amps.	12; 30	12; 35	12; 40	12; 50	12; 30	12; 35	12; 40	12; 50	12; 30	12; 35	12; 40	12; 50	12; 30	12; 35	12; 40	12; 50
SHOCK ABSORBERS		Front & Rear				Front & Rear				Front & Rear				Front		Rear	
SPRINGS, FRONT	Length & Width	44" x 2"				44" x 2"				44" x 2"				44" x 2"			
	Number of Leaves; Cap. at Ground	6; 1170 lb.				6; 1170 lb.				6; 1170 lb.				7; 1300 lb.			
SPRINGS, REAR	Length & Width	52" x 2"				52" x 2"				52" x 2"				52" x 2½"			
	(Standard) No. of Leaves; Cap. at Ground	7; 1250 lb.				7; 1250 lb.				9; 1700 lb.				8; 2300 lb.			
	(Optional) No. of Leaves; Cap. at Ground	8; 1550 lb.				8; 1550 lb.				10; 2400 lb.				8; 2400 lb. 8 Main, 5 Aux.; 3450			
STEERING	Ball-Gear Ratio; Wheel Dia.	21.3 to 1; 18"■				21.3 to 1; 18"■				21.3 to 1; 18"■				21.3 to 1; 18"■			
TIRES, FRONT & SINGLE REAR	Standard	6.70-15/4PR (Spare Incl.)				6.70-15/4PR (Spare Incl.)				7-17.5/6PR				8-17.5/6PR Front; 8-17.5/8PR Rear			
	Maximum	7-17.5/6PR (Spare Incl.)				7-17.5/6PR (Spare Incl.)				8-19.5/8PR				8-19.5/8PR			
TRANSMISSION	Type; No. of Speeds	Synchro; 3		HD Synchro; 3		Synchro; 3		HD Synchro; 3		Synchro; 3		HD Synchro; 3		Synchro; 4		HD Synchro; 3	
		Synchro; 4		Hydra-Matic; 4		Synchro; 4		Hydra-Matic; 4		Synchro; 4		Hydra-Matic; 4		Hydra-Matic; 4			
WHEELS	Type	6-Stud Disc				6-Stud Disc				8-Stud Disc				8-Stud Disc			
	Std. Rim Size; Max. Rim Size	5½K; 5.25"				5½K; 5.25"				5.25"; 5.25"				5.25"; 5.25"			

EQUIPMENT SHOWN IN BOLD FACE ITALICS OPTIONAL AT EXTRA COST

● Available as accessory item.

■ Power Steering optional at extra cost.

★ Trademaster V8 engine option includes electric windshield wipers and 1 1/2 qt. oil filter.

Litho in U.S.A. September, 1958

All illustrations and specifications contained in this literature are based on the latest product information available at the time of publication approval. The right is reserved to make changes at any time without notice in prices, colors, materials, equipment, specifications and models, and also to discontinue models.

CHEVROLET MOTOR DIVISION OF GENERAL MOTORS CORPORATION, DETROIT 2, MICHIGAN