

**CHEVROLET
TRUCKS**

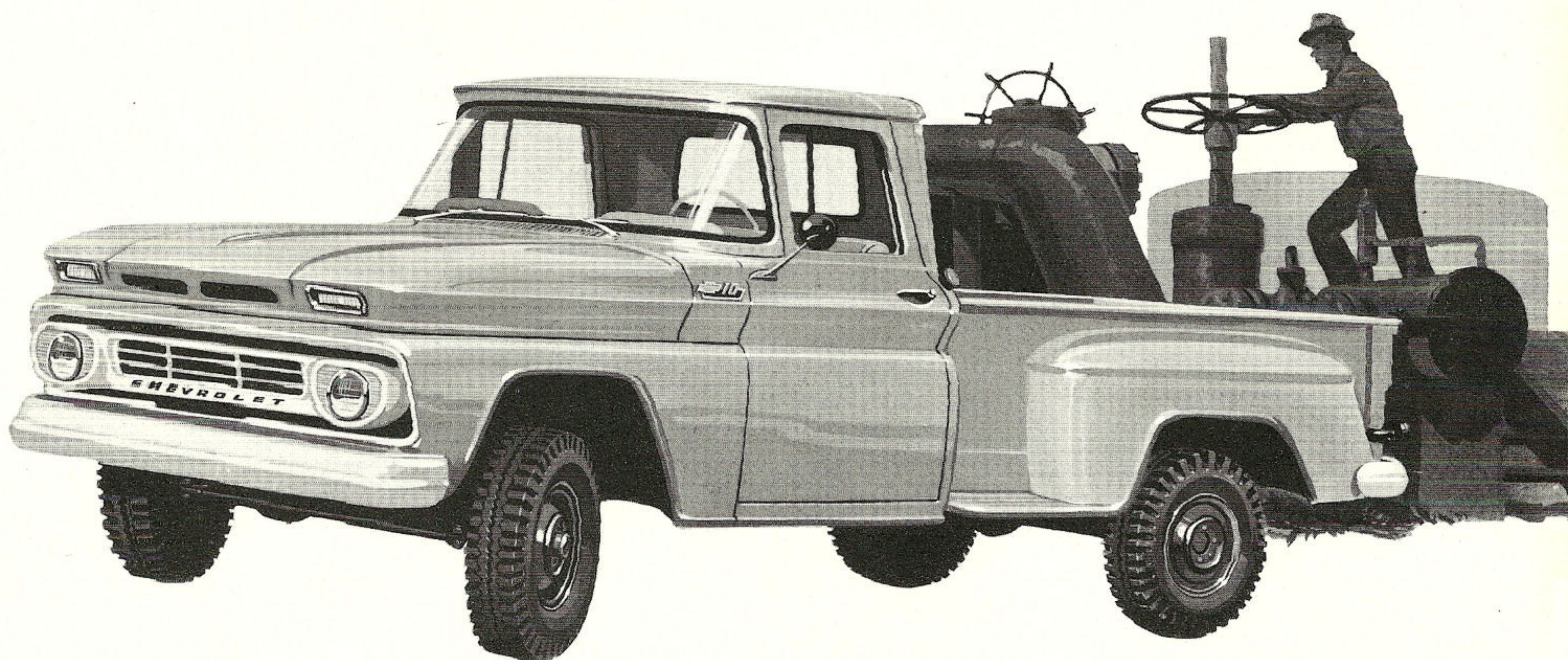
1962

| 4-WHEEL DRIVE MODELS



4-WHEEL DRIVE TRUCK SELECTOR

		Pickup or Panel Body Length	Maximum Body Length	Maximum Payload or Body-Payload Capacity
FLEETSIDE PICKUPS	K1434	6½-ft.		1400 lb.
	K1534	8-ft.		1300 lb.
	K2534	8-ft.		2750 lb.
STEPSIDE PICKUPS	K1404	6½-ft.		1450 lb.
	K1504	8-ft.		1350 lb.
	K2504	8-ft.		2800 lb.
CHASSIS-CABS	K1403		6½-ft.	1850 lb.
	K1503		8½-ft.	1800 lb.
	K2503		8½-ft.	3250 lb.
SUBURBAN CARRYALLS	K1406	6 to 8 passenger		850 lb.
	K1416	6 to 8 passenger		850 lb.
PANEL	K1405	7½-ft.		1150 lb.



GO-ANYWHERE

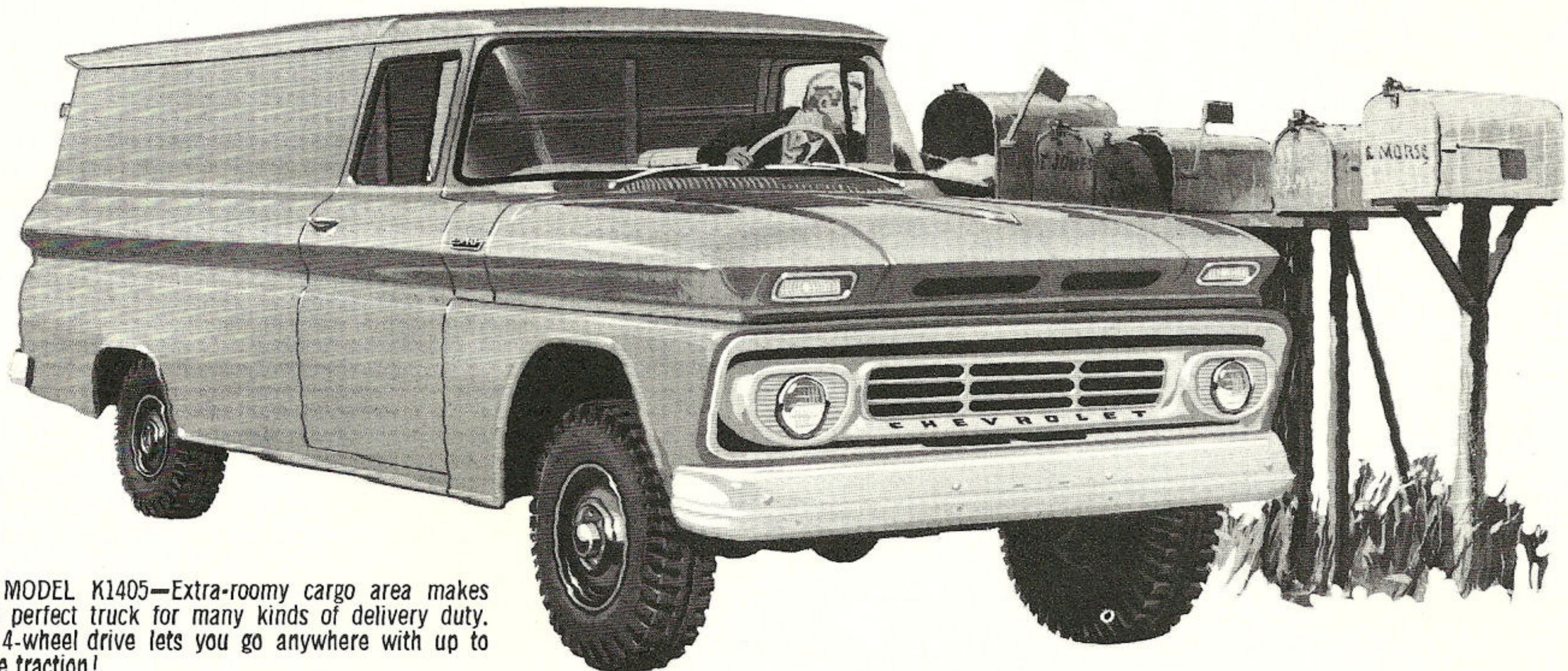
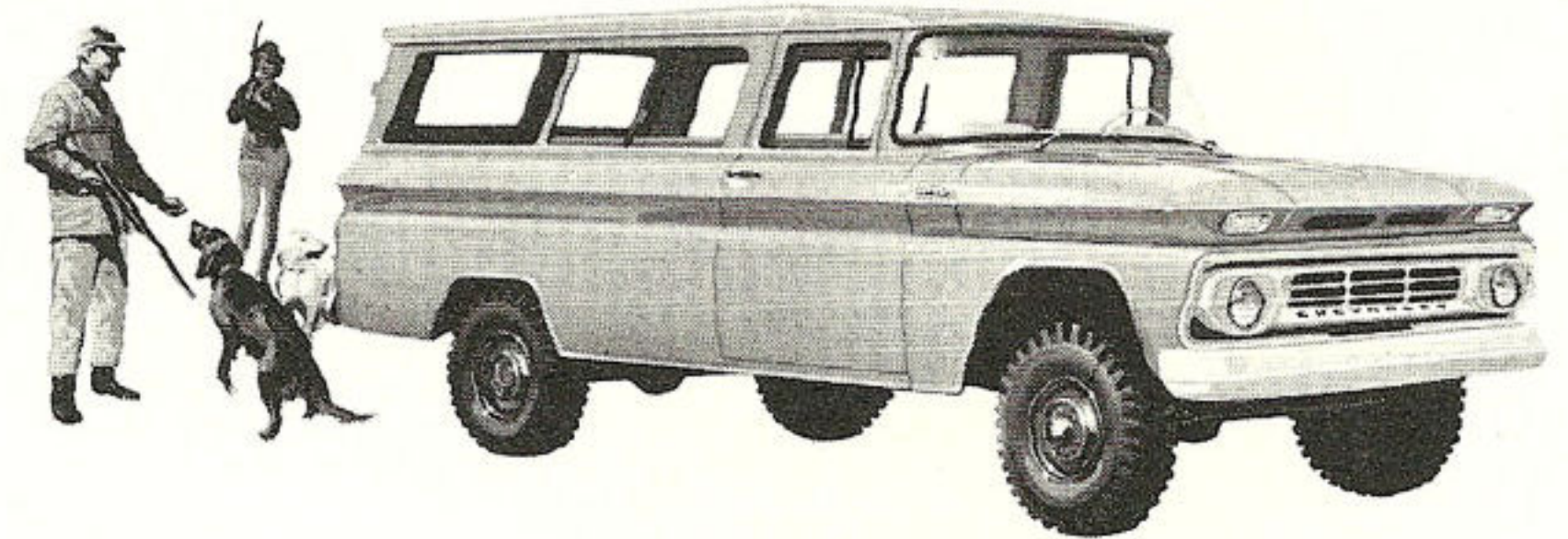
4-WHEEL DRIVE

MODELS

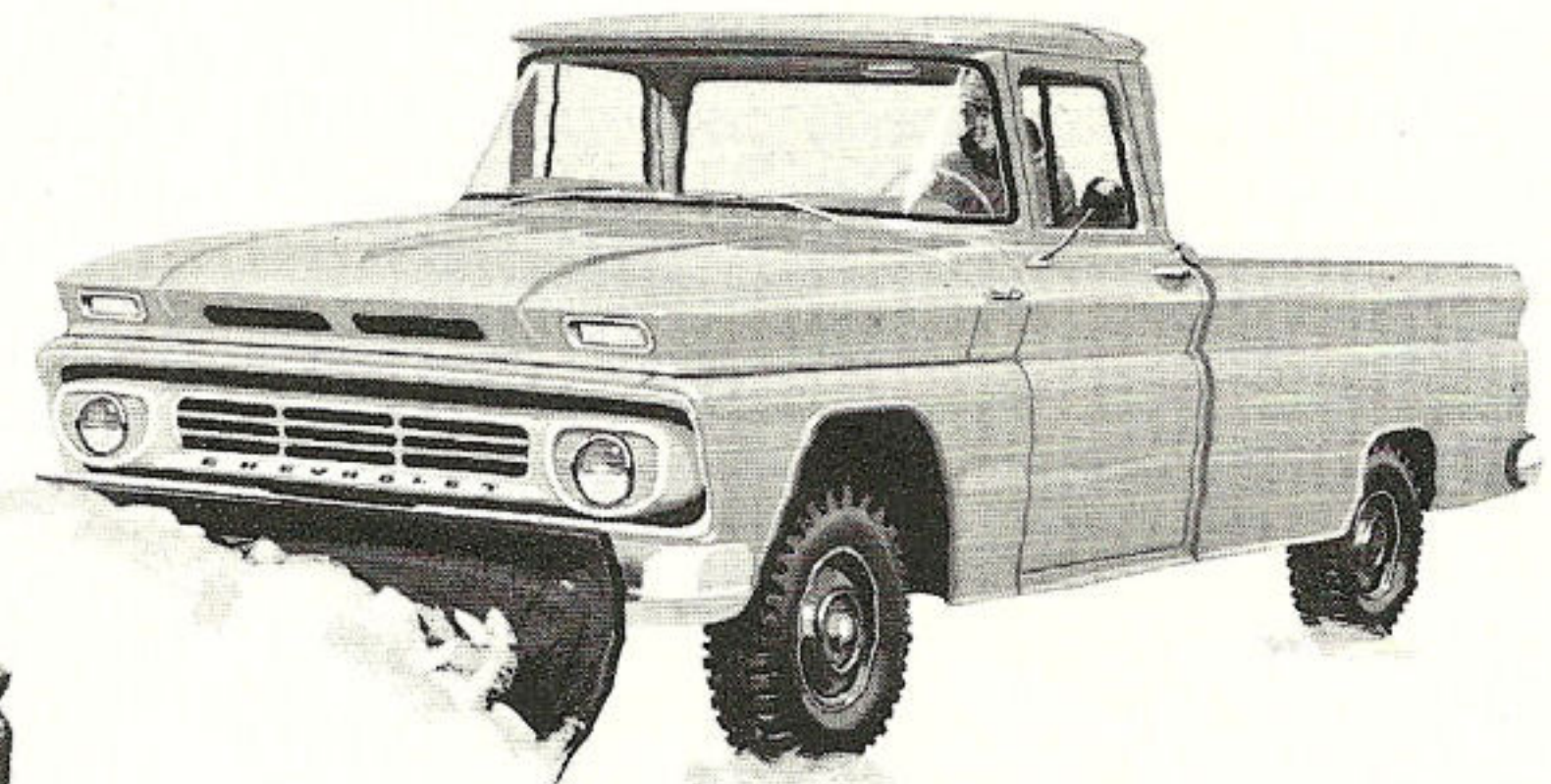
Here are 12 tough Chevy 4 x 4's for '62, trucks that go where others can't—through deep snow, mud, sand, across fields, up towering grades—wherever the going's worst! For virtually any kind of out-of-the-way work, there's a Chevrolet 4-wheel drive model with tough truck build and *up to twice the traction to get you through*. On easy hauls, you roll along in economical 2-wheel drive. Then, when the route gets rugged, you shift—without clutching—to 4-wheel drive and get pulling

power that digs in and keeps you rolling! Three durable High Torque truck engines—the proven 235 Six (standard), the rugged 261 Six and the power-packed 283 V8 power Chevrolet's wide range of 4 x 4's. In addition, Chevy's versatility is enhanced by power take-off openings that make it possible to operate a wide variety of power tools. For extra-rugged jobs, you just can't beat a Chevrolet Pickup, Panel, Carryall or Chassis-Cab with go-anywhere 4-wheel drive!

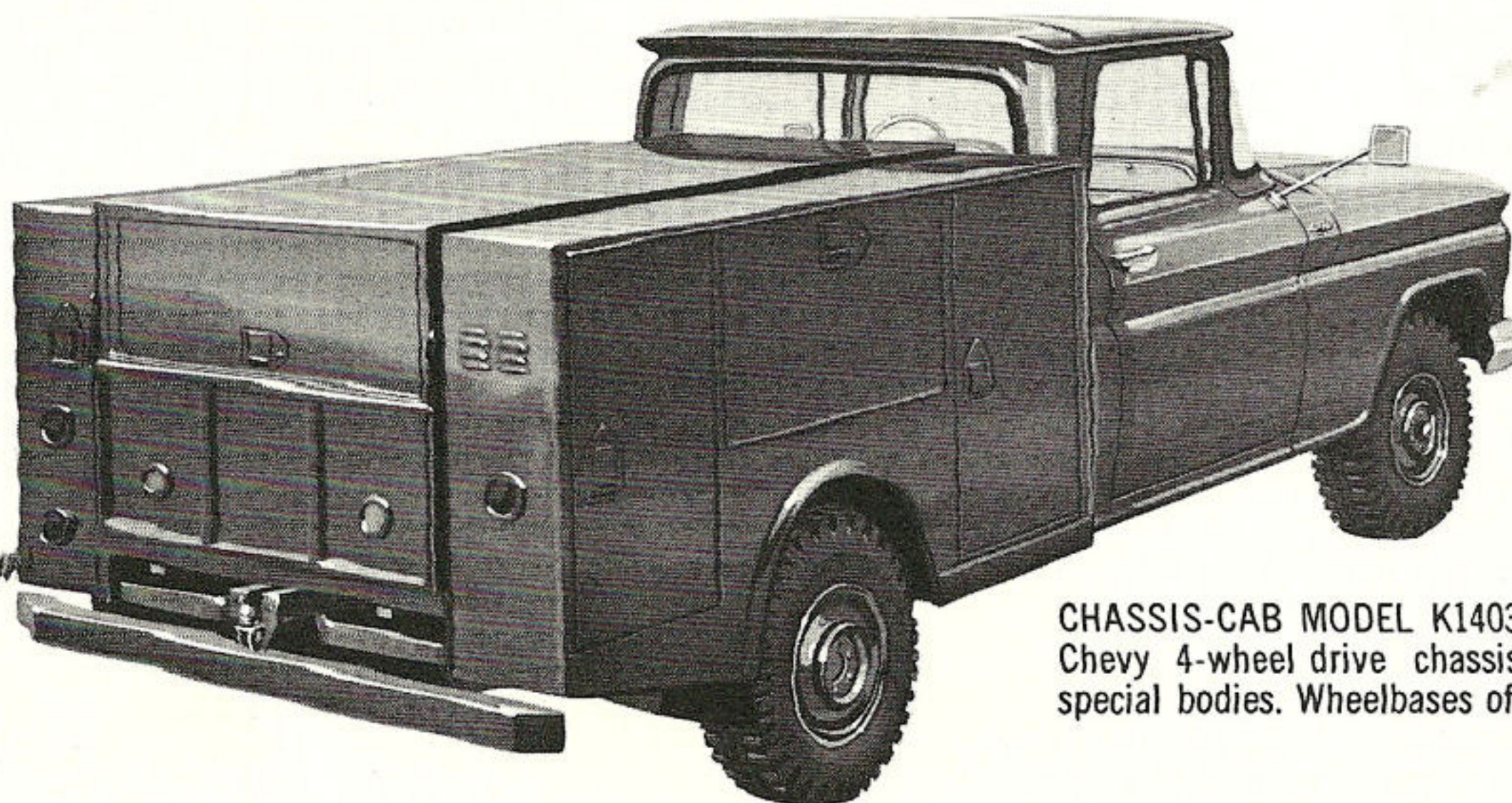
SUBURBAN CARRYALL MODEL K1406—With handsome station wagon styling, the 4 x 4 Suburban Carryall is the ideal vehicle for out-of-the-way work or play. Room for 8 passengers or up to 850 lbs. of payload.



PANEL MODEL K1405—Extra-roomy cargo area makes this the perfect truck for many kinds of delivery duty. Rugged 4-wheel drive lets you go anywhere with up to twice the traction!

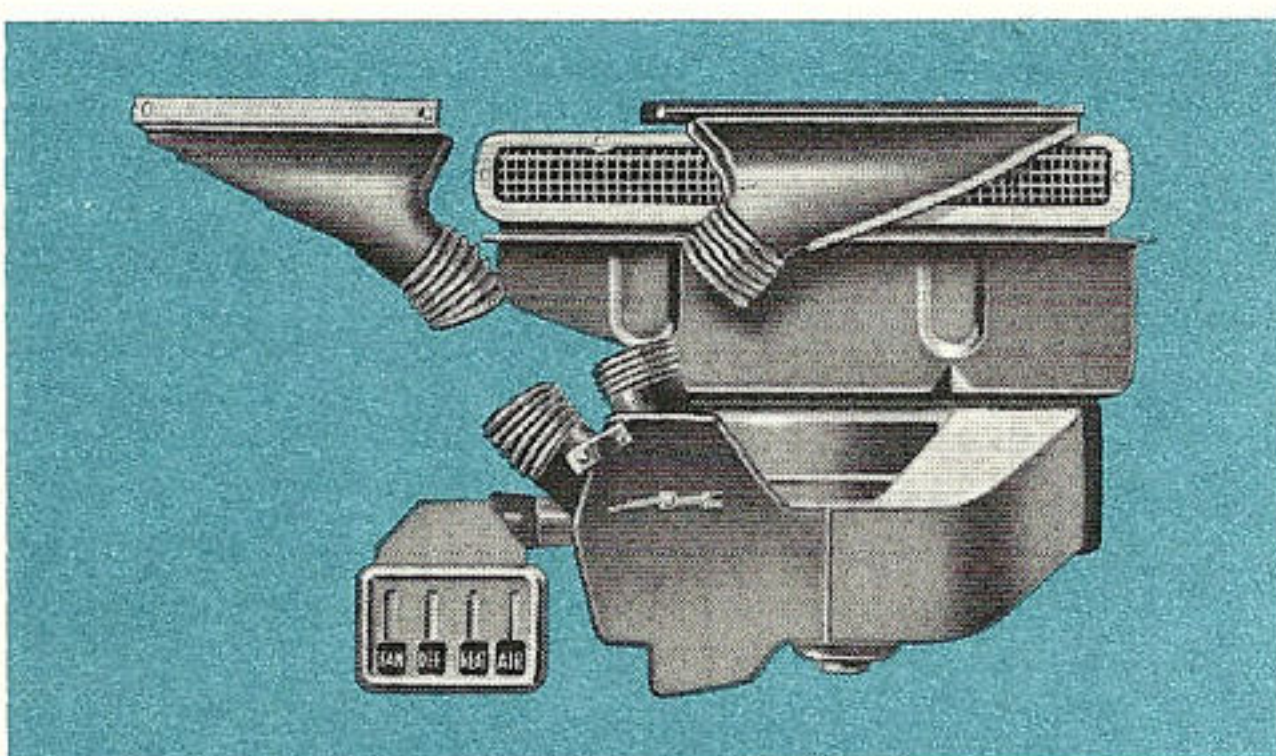


FLEETSIDE PICKUP MODEL K1534*—For snowplow service station use and many other tough jobs, this sturdy 4-wheel drive Fleetside Pickup handles bruising hauling assignments with ease and economy.



CHASSIS-CAB MODEL K1403 with Special Utility Body*. Chevy 4-wheel drive chassis-cabs are ideal for many special bodies. Wheelbases of 115" and 127" are available.

*Body and/or vocational equipment are not the products of Chevrolet and are not intended to represent those of any manufacturer.



DEALER INSTALLED CUSTOM FEATURES

High capacity combination heater-defroster units, designed to keep you warm and comfortable with windows clear of vapor or frost, are available directly from your Chevrolet dealer. Both de luxe and recirculating models are available. With these and many other dealer-installed custom features, you can personalize your Chevy truck and tailor it exactly to your liking. The following list is typical of the variety of custom features available:

Air Conditioner
Bumper Guards
Cigar Lighter

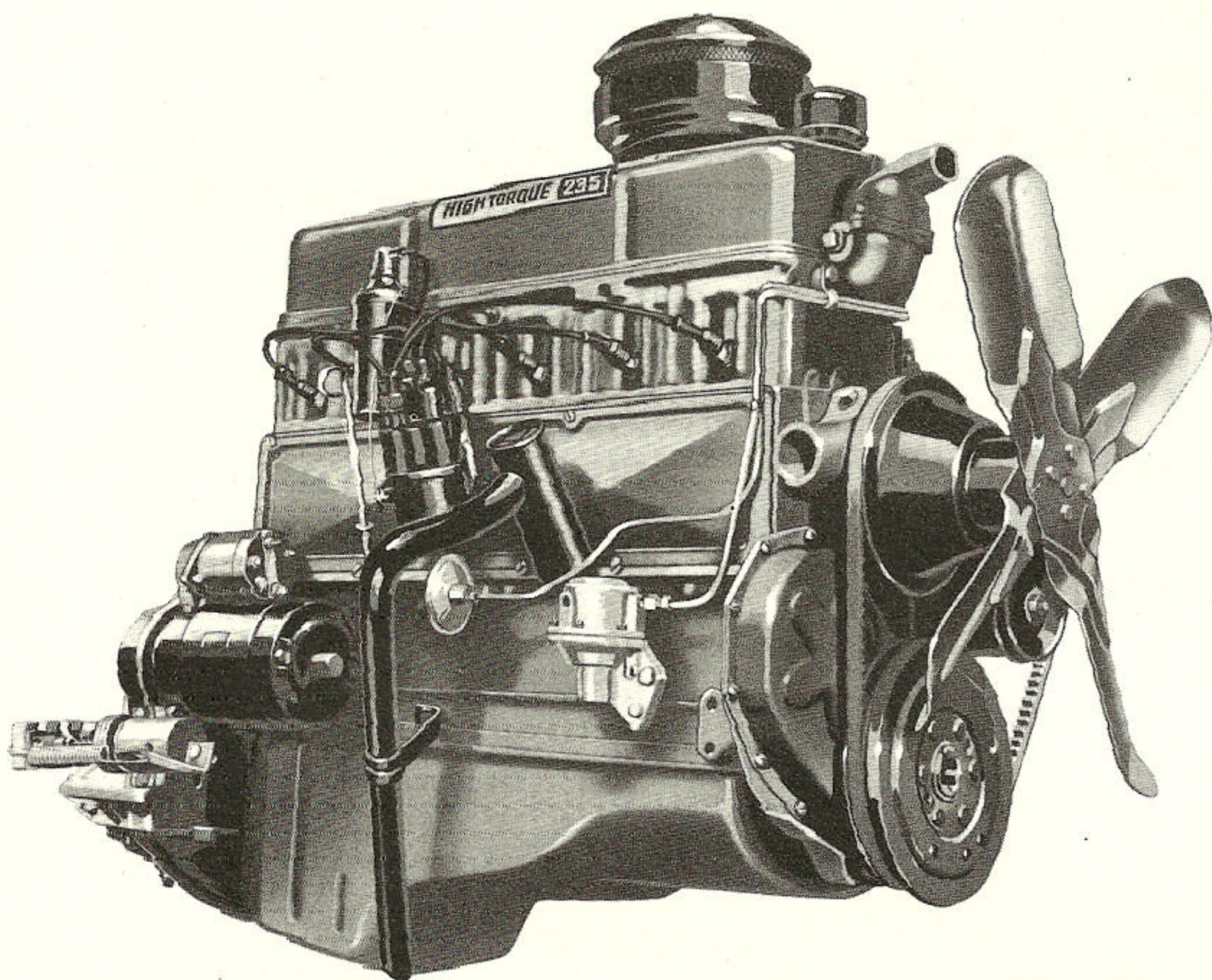
Grille Guards
Marker Lights
Mirrors

Radios
Reflectors
Safety Lights

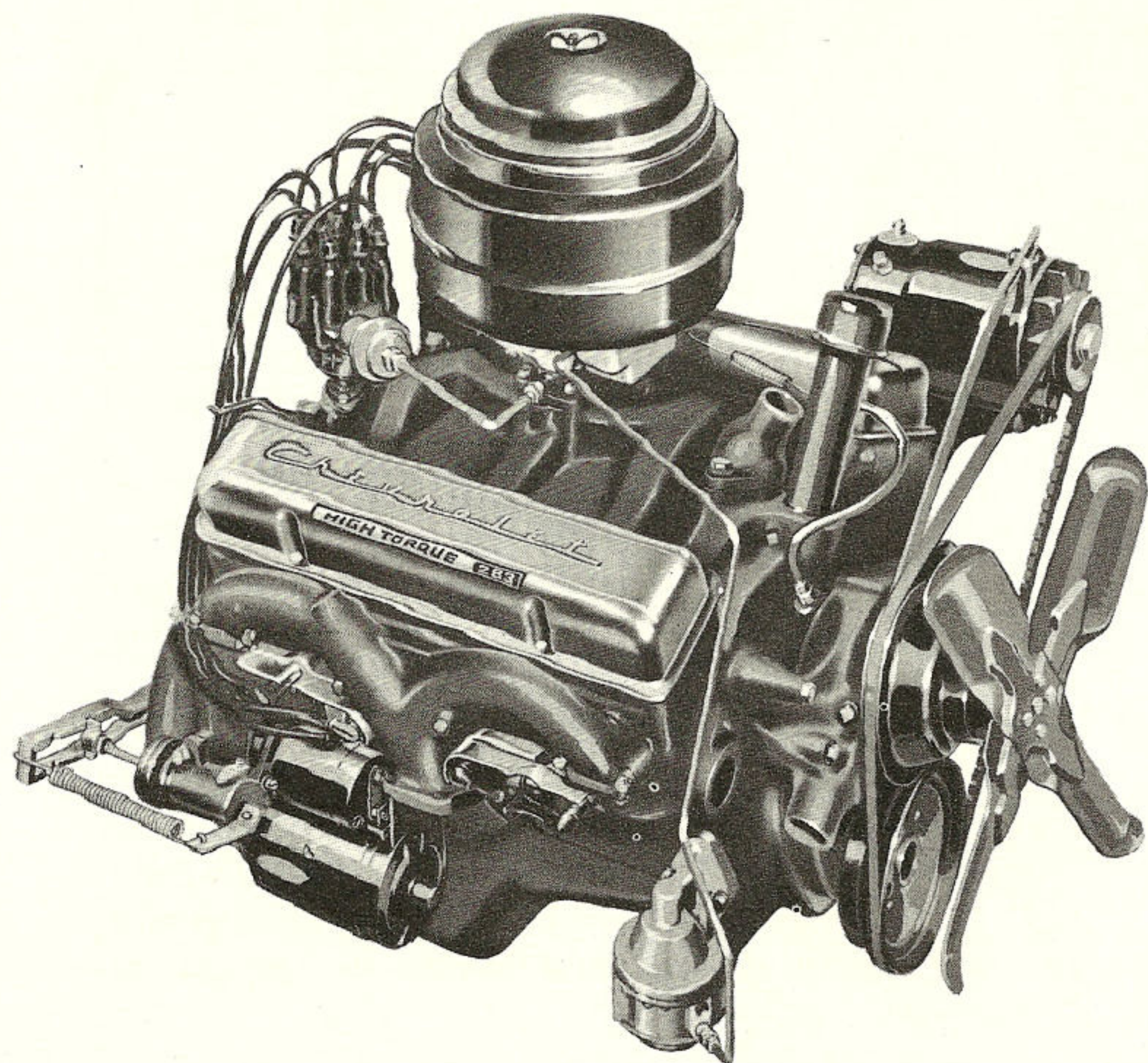
Safety Belts
Sun Visors
Windshield Washers

POWER TRAIN

*Choose from two durable
sure-saving Sixes and a power-
packed V8!*

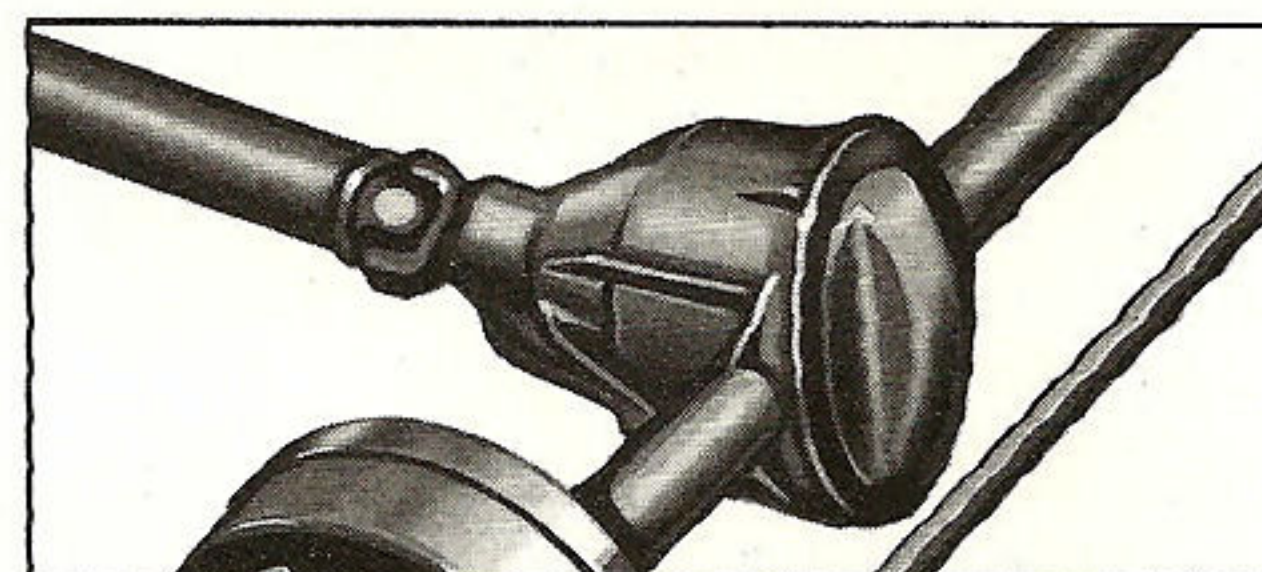
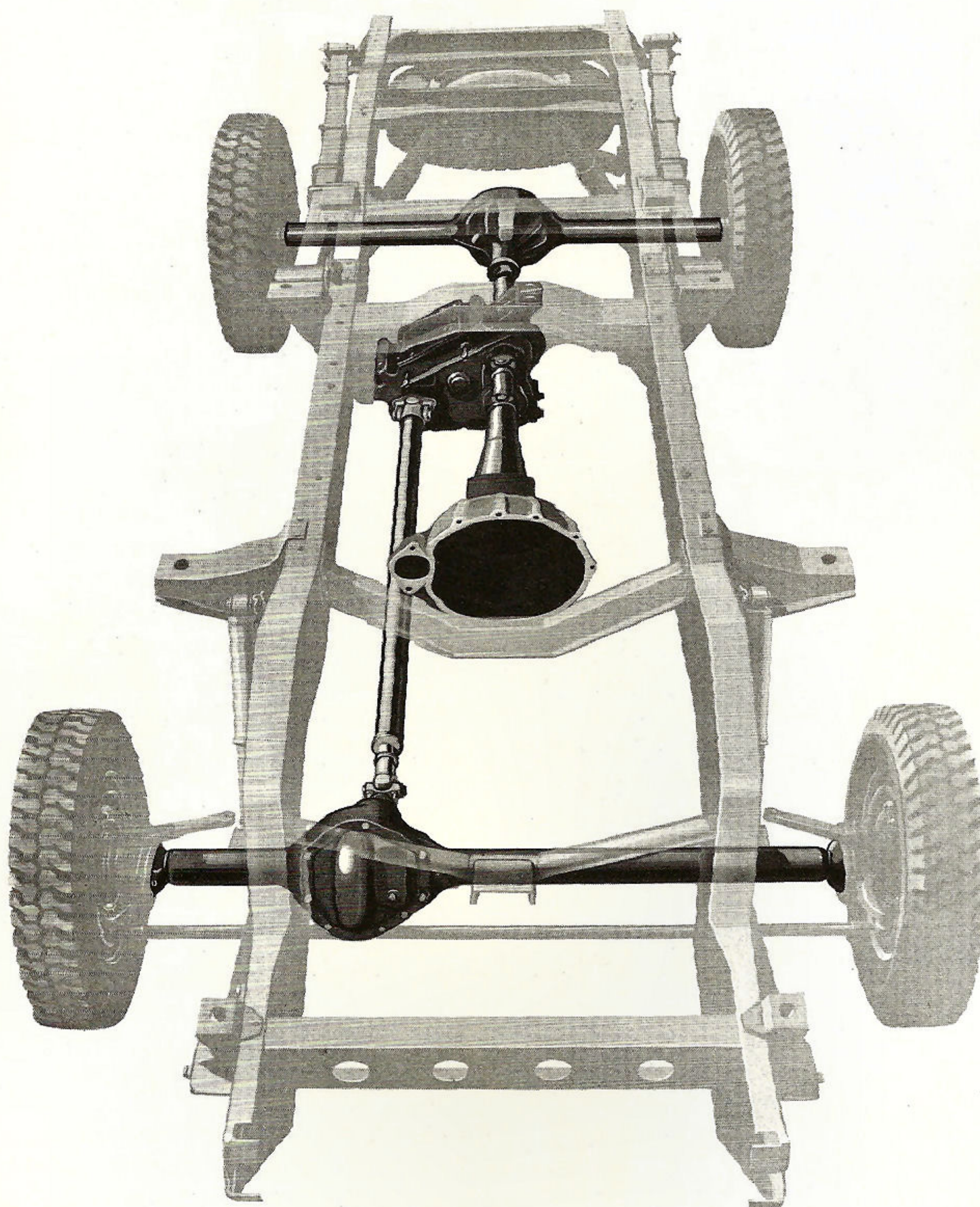


6's For gas-saving economy and low-maintenance durability, nothing does the job like Chevrolet's famous High Torque 235 Six. This advanced 6-cylinder engine squeezes extra miles from gas with a high 8.25:1 compression ratio, stays on the job with tough components such as forged steel crankshaft, long-life valves, precision bearings. And, if your work calls for a truck engine with extra pulling power, you can pick the rugged 261 Six now provided as an extra-cost option in light-duty models.

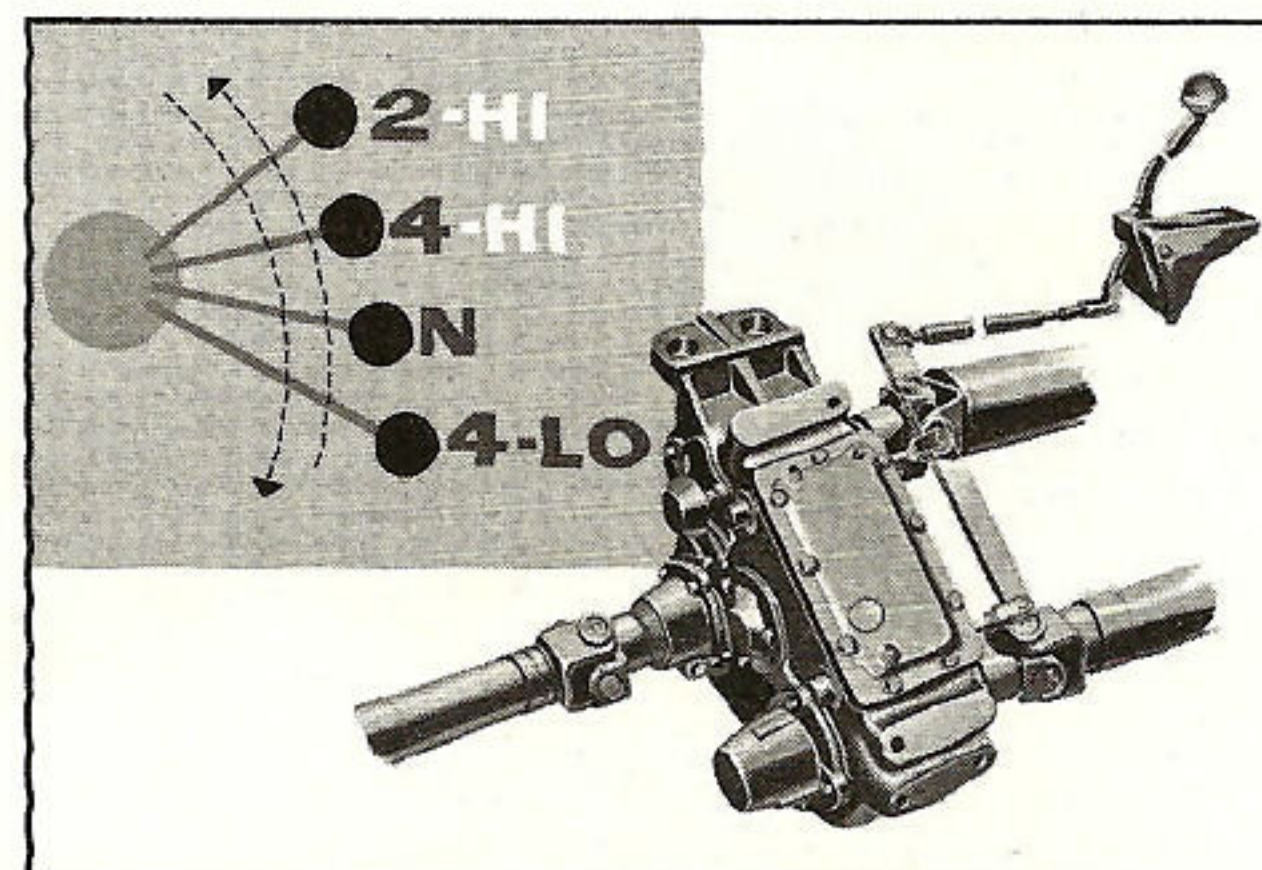


V8 If you're after a husky, power-packed V8 that delivers fleet, smooth performance that's just right for even the toughest chores, choose Chevy's rugged High Torque 283 V8 (extra-cost option). You'll get money-saving short stroke efficiency and extra durability from features like hydraulic valve lifters, full-flow oil filter, tough Moraine 100 bearings, to name but a few.

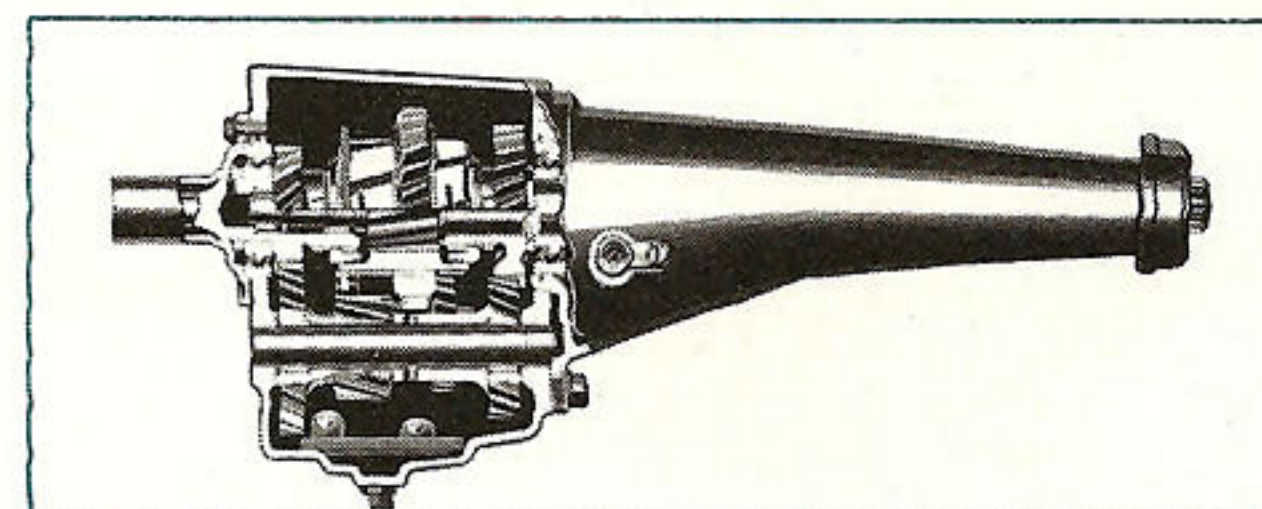
CHEVROLET 4 x 4's FOR RUGGED DEPENDABILITY



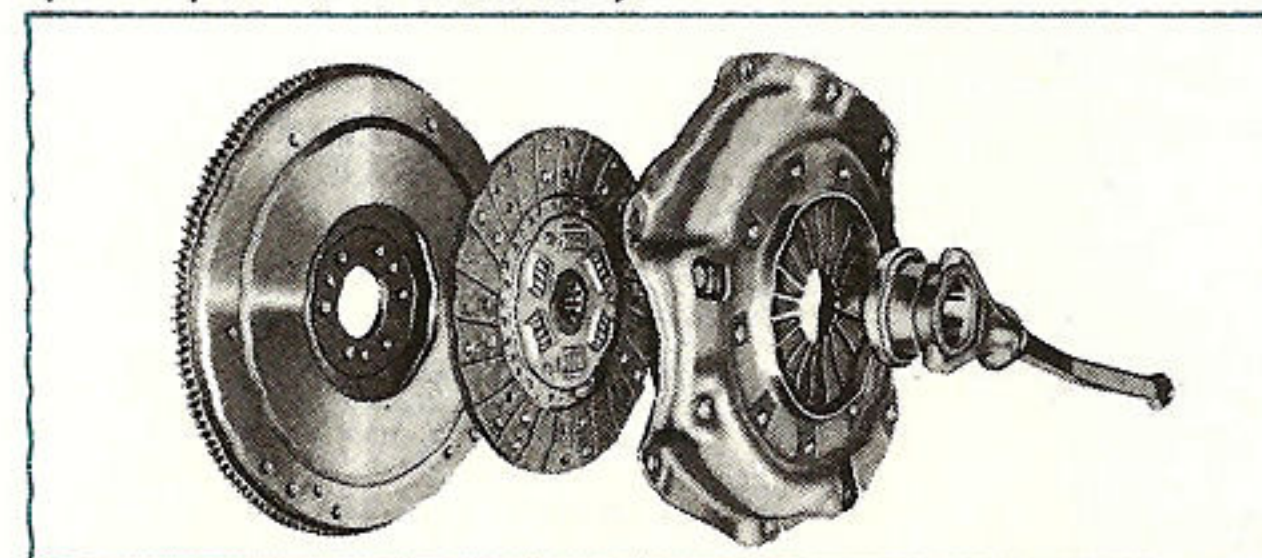
High-capacity AXLES



Easy single-lever control operates transfer case. Lever has 4 positions: 2-wheel direct, 4-wheel direct, neutral and 4-wheel underdrive. No clutching is needed between 2- and 4-wheel drive, and shift can be made with vehicle stopped or in motion.



Rugged 3-SPEED SYNCHRO-MESH TRANSMISSION (4-speed optional at extra cost).

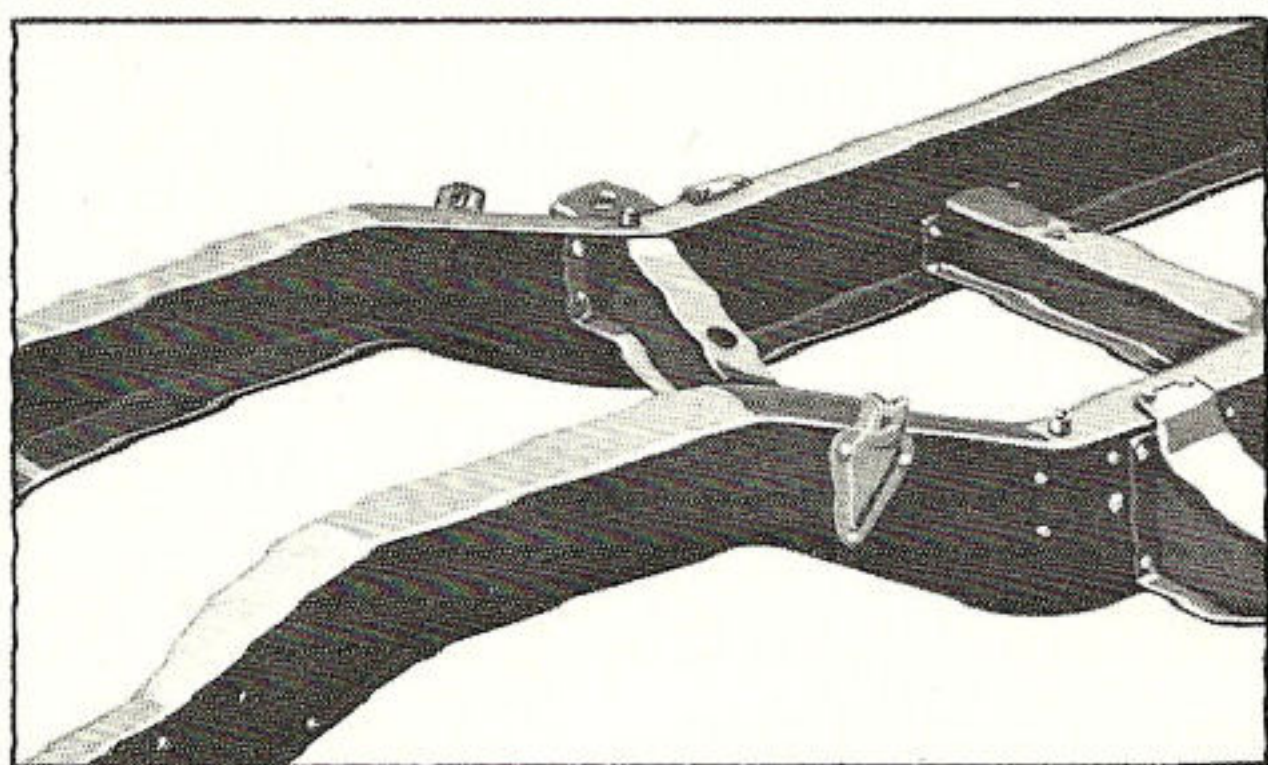


Heavy-duty 10-inch diaphragm-spring CLUTCH, standard (11-inch clutch optional at extra cost).

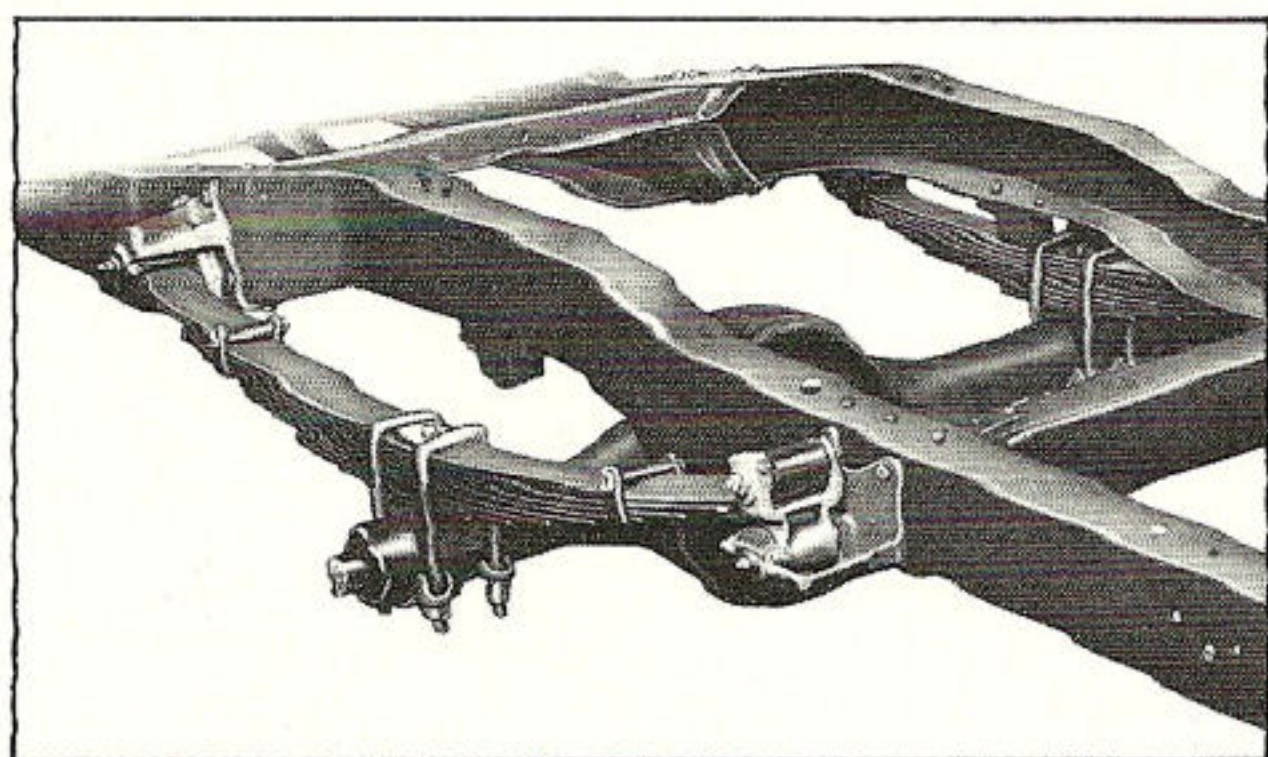
DRIVE LINE

An easy shift of a lever gives you *traction* to get through even the roughest off-the-road terrain! The Chevy 4-wheel drive unit consists, basically, of a rubber-mounted power divider with precision-engineered front axle. It distributes power evenly between front and rear axles. When the going is really rough, it directs power to whichever axle is getting the best traction. You get plenty of load-carrying capacity too, from hypoid front and rear axles up to 3,500-lb. capacity in front, up to 5,200 lbs. at rear.

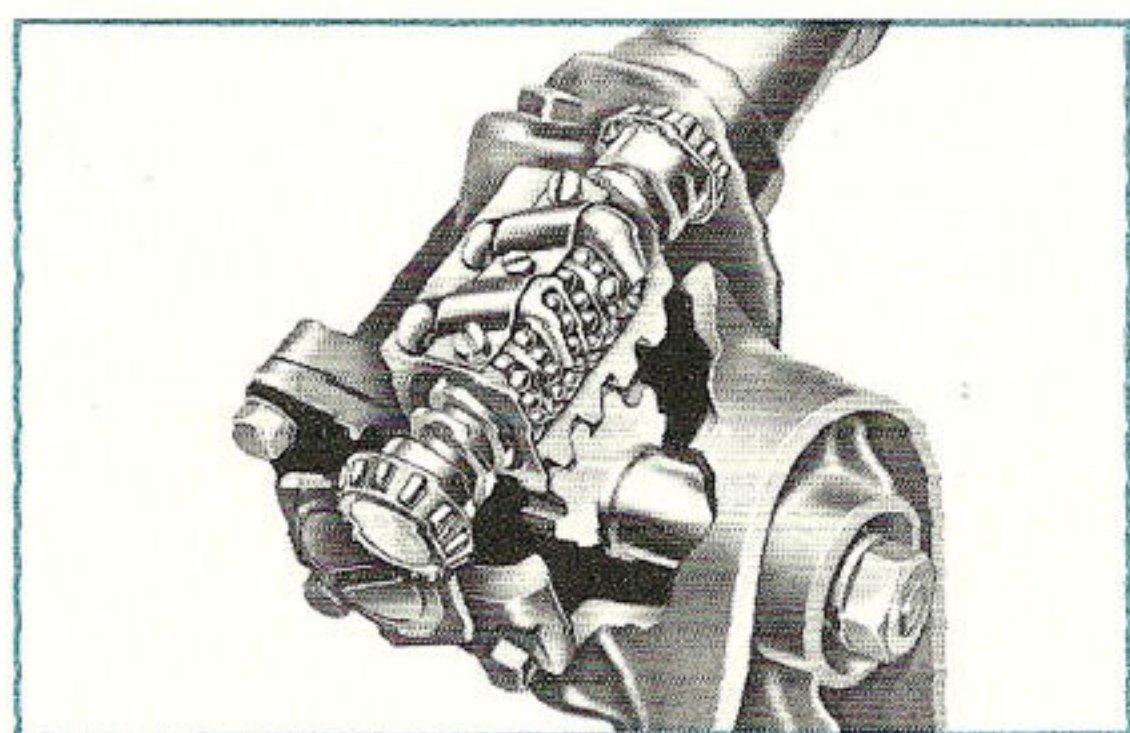
Thanks to an easily accessible power take-off opening, auxiliary equipment, mounted to front or rear of the truck, can be powered by the engine. A heavy-duty 10-inch clutch (standard) smooths the engagement of engine and drive line. Hydraulic clutch control increases truck life while making shifting easier. Rugged 3-speed transmission, standard in 4-wheel drive models, features tough, dependable gears carburized and shot-peened for long service. 4-speed transmission is optional at extra cost.



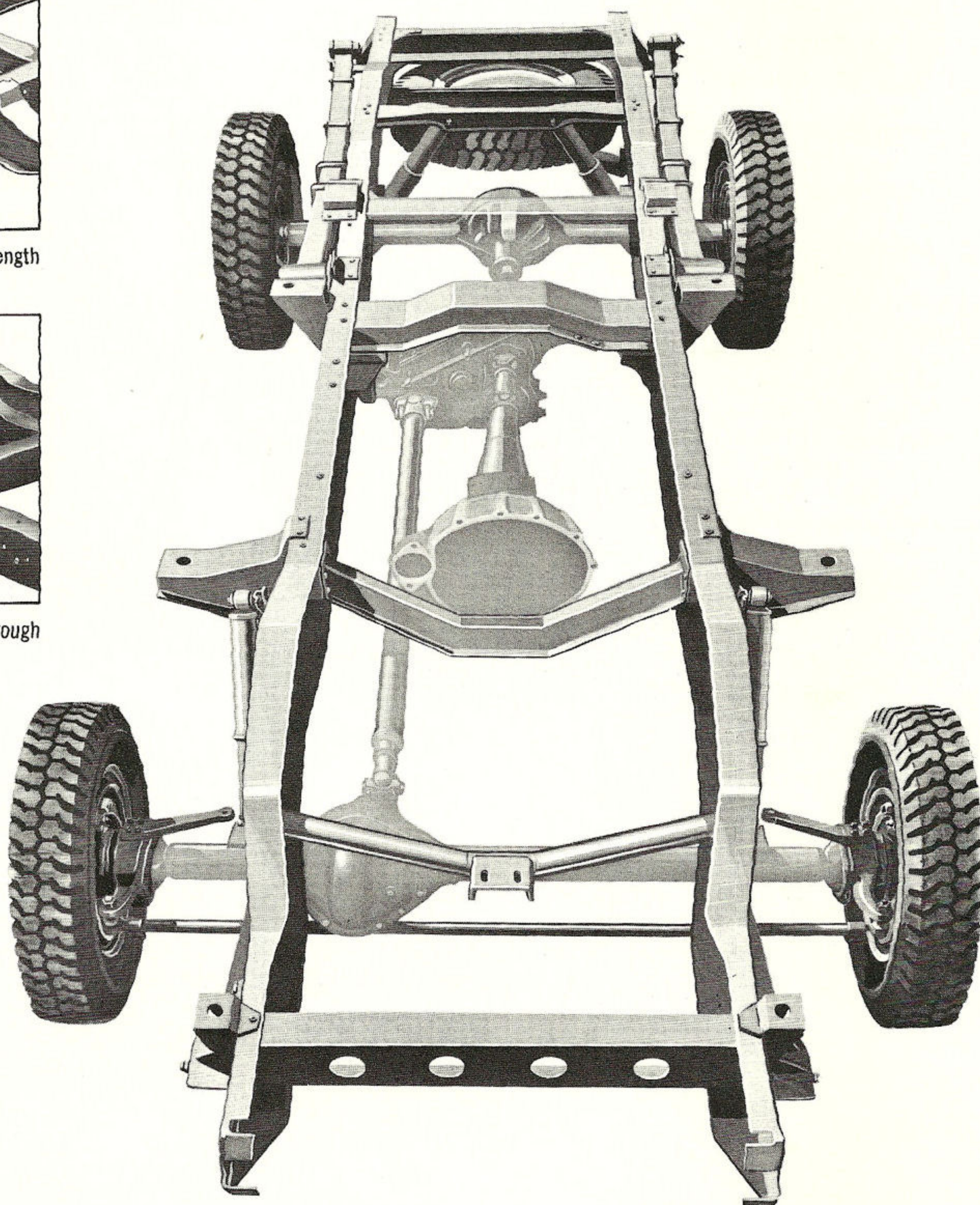
Husky parallel-design FRAMES with extra beam strength and rigidity.



Rugged extra-capacity LEAF SPRINGS designed for rough off-the-road runs.



Low-friction BALL-GEAR STEERING keeps steering light, firm and positive.



TRUCK-TOUGH CHASSIS FEATURES

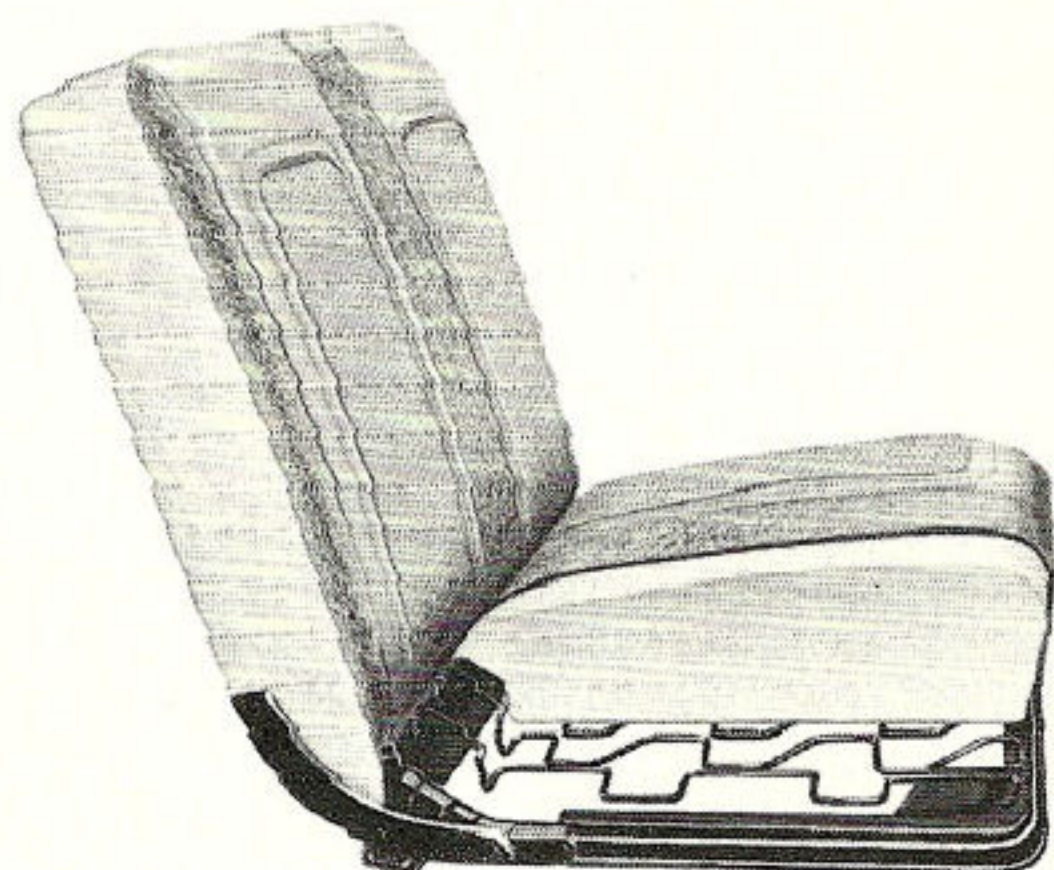
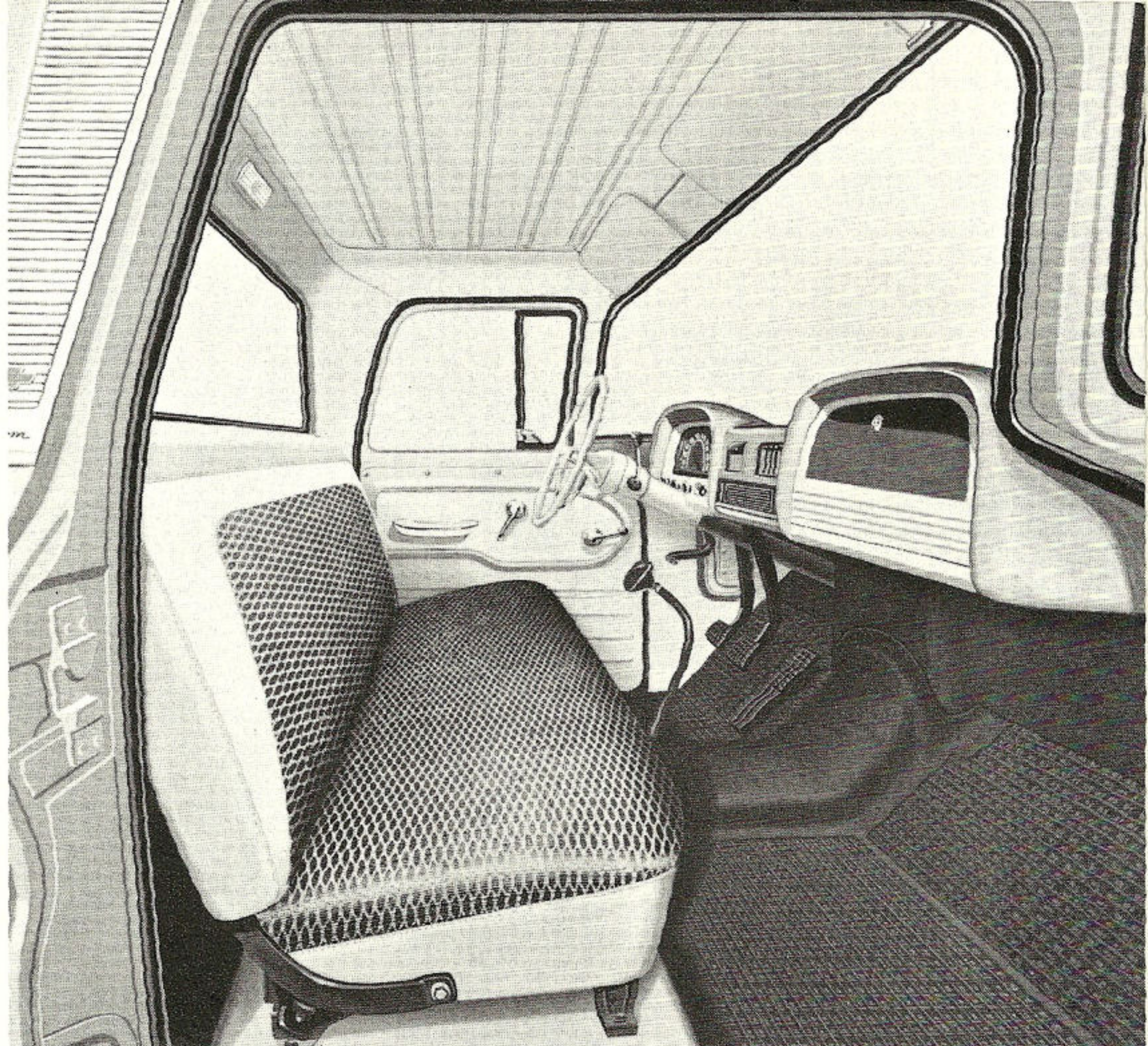
Here's stay-on-the-job stamina that stands up to 4-wheel drive hauling! Husky parallel-design frame with extra beam strength and rigidity enables a Chevy 4-wheel drive to take the roughest terrain in stride. Adds to longer truck life with less maintenance. Big brakes with extra lining area provide sure, safe stops. Friction-

reducing ball-gear steering assures light, firm and positive steering with less steering effort. Sturdy leaf springs are designed to take it on out-of-the-way runs. Rear spring capacities up to 3,150 lbs; front spring capacities up to 1,750 lbs. This is a chassis you can count on to keep going in rugged work that measures a 4 x 4's mettle!

CABS

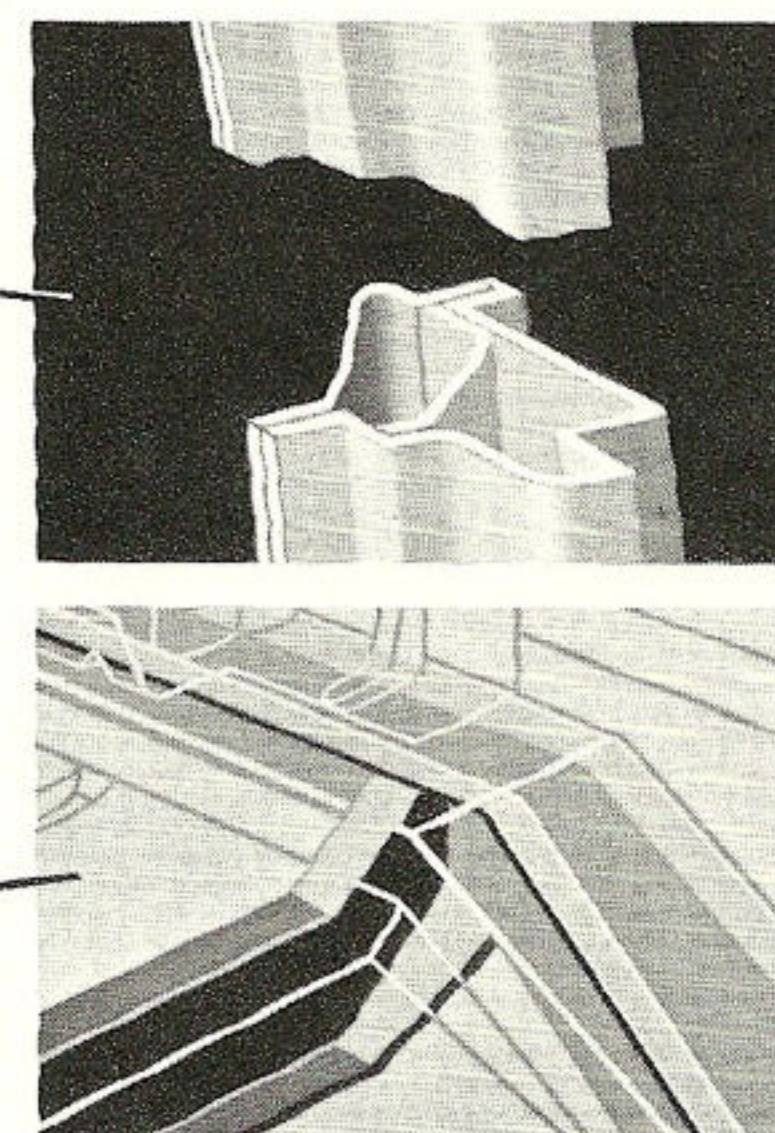
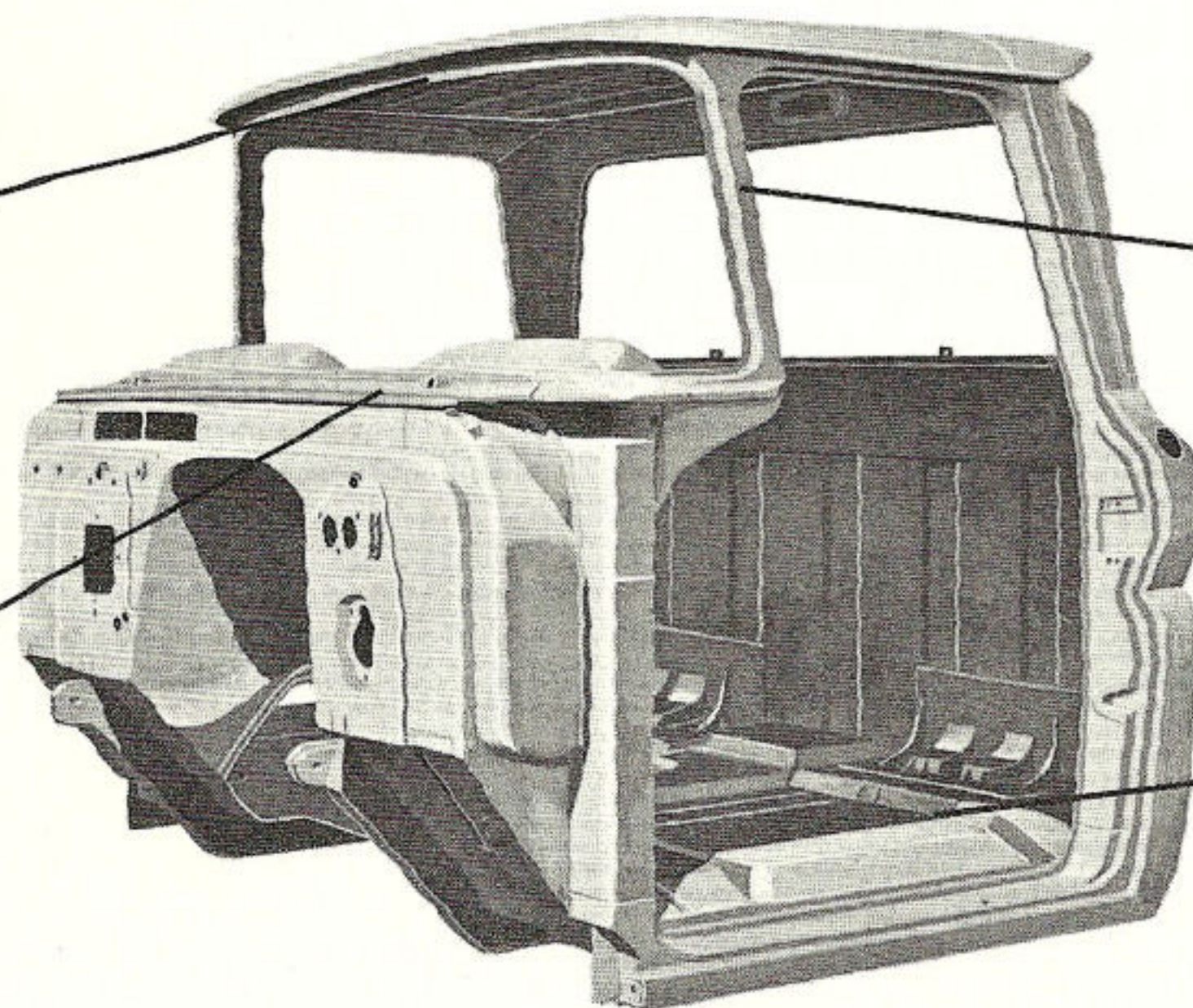
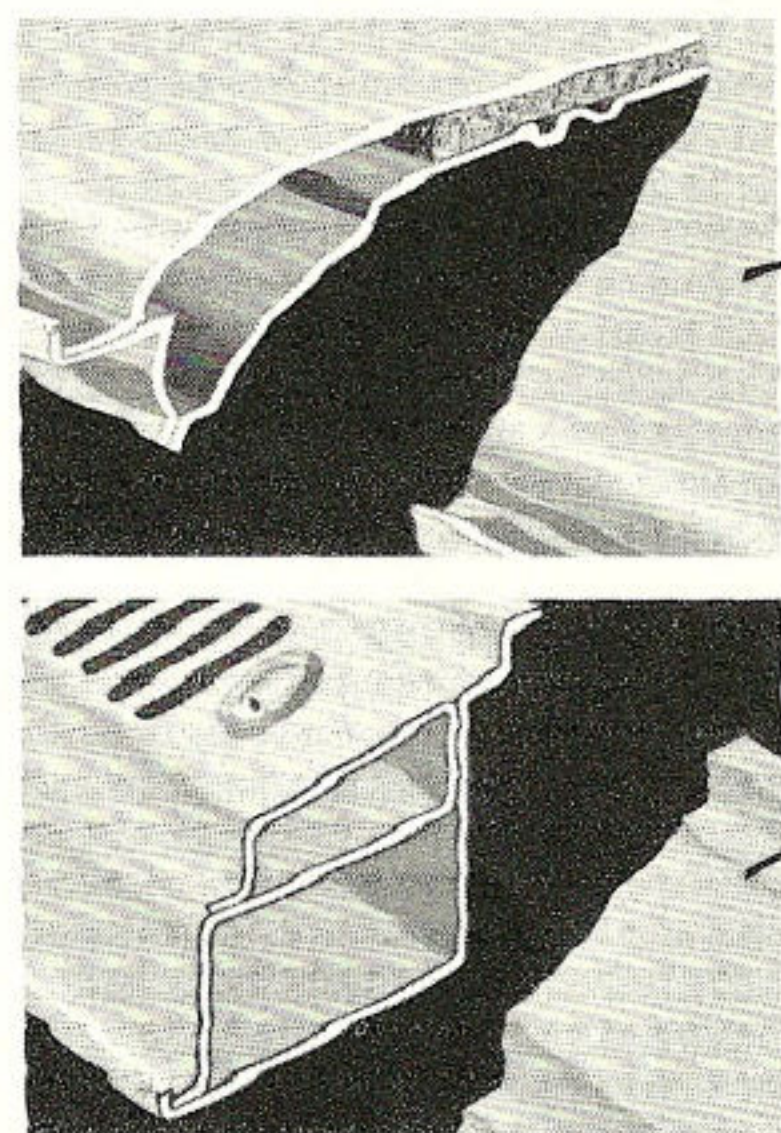
*that combine
comfort and strength!*

1962 Chevrolet Comfort-King cabs come fully equipped with features that make long hours of hauling more comfortable, easier and safer for drivers—more economical for owners. Over-all cab design makes possible lower floors for easier entry and exit. Extra-wide foam cushioned seats (a full foam cushioned seat is available at extra cost) ease long hours at the wheel. There's a high, wide windshield complemented by the new hood design that lets you see the road directly in front of the truck 8½ feet closer. Electric windshield wipers with extra-long blades assure clear vision in all kinds of weather. Add to these such benefits as suspended pedals, easy-to-read instrument panel and handsome interiors, and you have a cab that makes work far more pleasant!



CUSTOM EQUIPMENT

Included in the custom equipped cab (shown above) is a maximum comfort seat featuring a 6-inch-deep foam cushion, a thick foam padding in the backrest and long-lasting pin seal grain vinyl with nylon faced pattern cloth trim. Other custom features include left-hand armrest, right-hand sunshade, right-hand door outside keylock, chrome cigar lighter and special body insulation. The full foam seat cushion (illustrated) is also available as a separate option, with standard all-vinyl trim.

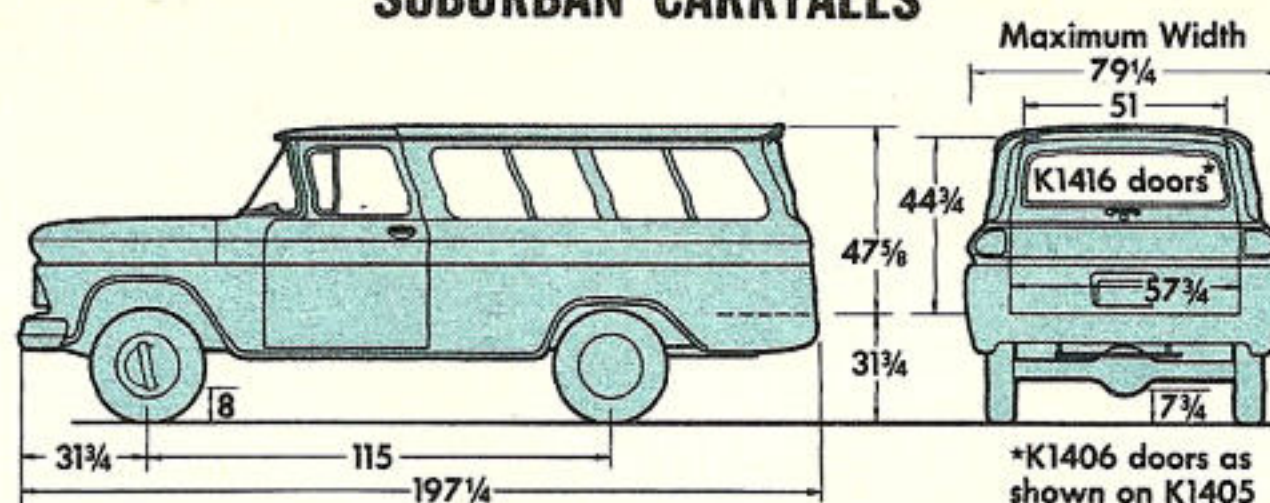


Here's extra quality construction that keeps Chevy cabs solid and tight through a long hard-working life: ■ *Deep sculptured double-panel roof* adds rigidity to entire cab structure; ■ *Reinforced box-section pillars* support roof and frame doorways, help keep doors in alignment; ■

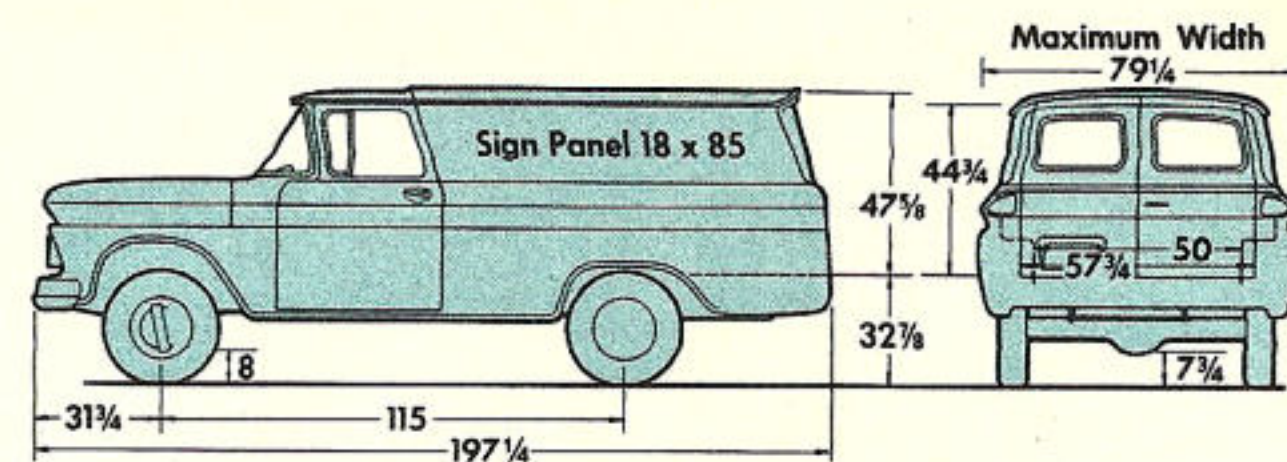
Massive double-walled cowl arch bridges front of cab structure, uniting door frames, dash and floor panels in an integrated, high-strength assembly; ■ *Rugged floor panel assembly* is double-braced with massive crossmembers plus fore-and-aft sills.

DIMENSIONS

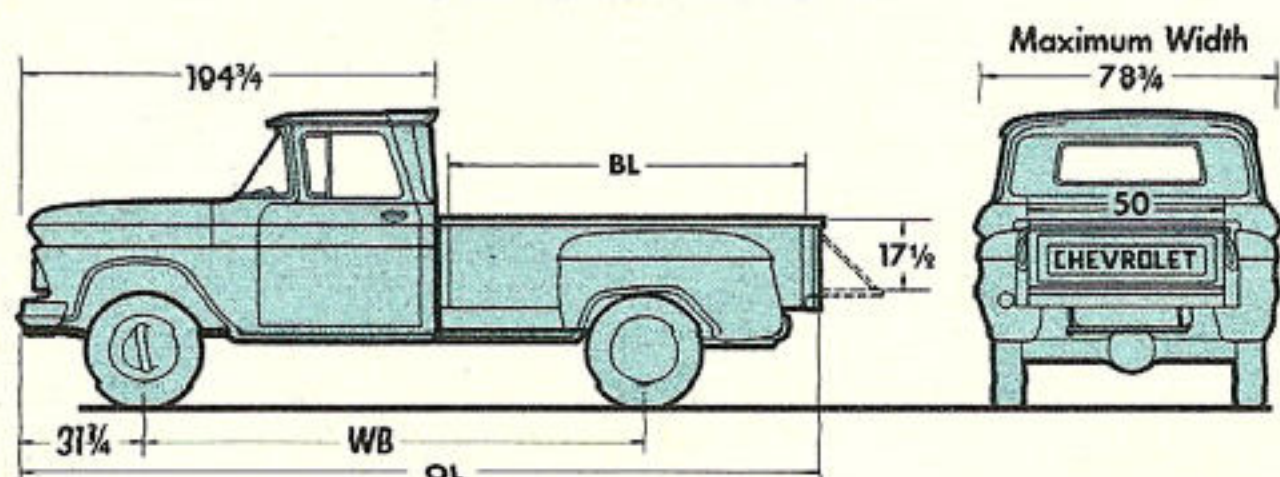
SUBURBAN CARRYALLS



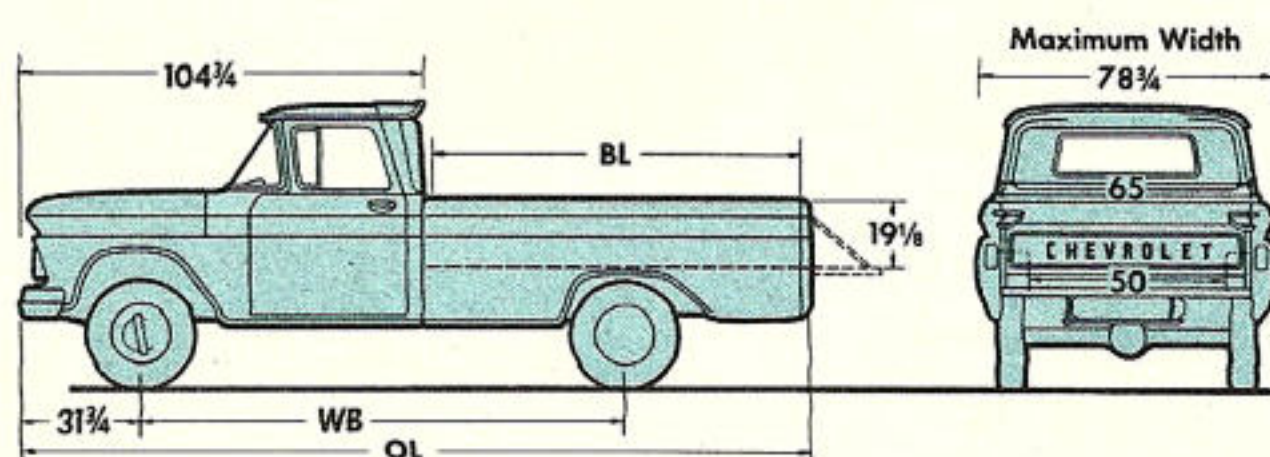
PANEL



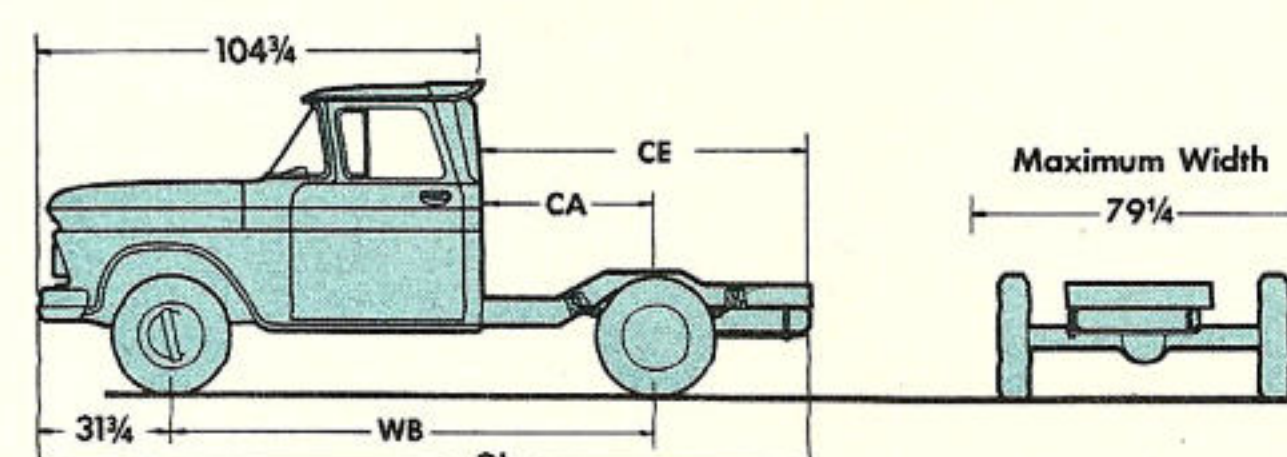
STEPSIDE PICKUPS



FLEETSIDE PICKUPS



CHASSIS CAB MODELS



MODEL	WB	OL	BL
K1404	115"	186 ⁵ / ₈ "	78 ¹ / ₂ "
K1504	127"	206"	98"
K2504	127"	206"	98"

MODEL	WB	OL	BL
K1434	115"	186 ³ / ₄ "	78 ¹ / ₂ "
K1534	127"	206"	98"
K2534	127"	206"	98"

MODEL	WB	CA	CE	OL
K1403	115"	42"	75 ¹ / ₂ "	180 ¹ / ₄ "
K1503	127"	54"	95 ¹ / ₂ "	200 ¹ / ₄ "
K2503	127"	54"	95 ¹ / ₂ "	200 ¹ / ₄ "

SPECIFICATIONS

		SERIES K14 & K15			SERIES K25		
GROSS WEIGHT RATINGS		GVW 4900 lb. to 5600 lb.			5700 lb. to 7600 lb.		
AXLE, FRONT	Type	Tubular Driving (Ratio 3.92 to 1) ▲			Tubular Driving (Ratio 4.55 to 1) ▲		
	Rating	3300 lb.			3500 lb.		
AXLE, REAR	Rating	3300 lb.			5200 lb.		
	Ratio	3.90 to 1			4.57 to 1		
BRAKES, PARKING	Location	Rear Wheels			Rear Wheels		
BRAKES, SERVICE	Size Front	11" x 2"			12" x 2"		
	Size Rear	11" x 2"			12" x 2"		
Total Lining Area		172 Sq. In.			191 Sq. In.		
ENGINE, HIGH TORQUE	Type	235 Six	261 Six	283 V8	235 Six	261 Six	283 V8
	Displacement	235.5 Cu. In.	261 Cu. In.	283 Cu. In.	235.5 Cu. In.	261 Cu. In.	283 Cu. In.
	Gross Horsepower	135	150	160	135	150	160
	Gross Torque	217 Ft.-lb.	235 Ft.-lb.	270 Ft.-lb.	217 Ft.-lb.	235 Ft.-lb.	270 Ft.-lb.
	Clutch Dia.; Facing Area (sq. in.)	10"; 100	11"; 124	11"; 124	10"; 100	11"; 124	11"; 124
Cooling Capacity		17 Qt.	17 1/2 Qt.	17 1/2 Qt.	17 Qt.	17 1/2 Qt.	17 1/2 Qt.
FRAME	Side Rail Dimen.; Sec. Mod.	7 3/16" x 2 3/4" x 3/16"; 5.09			7 3/16" x 2 3/4" x 3/16"; 5.09		
FUEL TANK	Capacity	18 1/2 Gal. (17 Gal., K1405-06-16)			18 1/2 Gal.		
GENERATOR	Volts; Amps	12; 30	12; 35	♣	12; 30	12; 35	♣
SHOCK ABSORBERS		Front & Rear			Front & Rear		
SPRINGS, FRONT	Type	Leaf; 44" Long x 2" Wide			Leaf; 44" Long x 2" Wide		
	Cap. at Ground	1650 lb. (5-leaf)			1750 lb. (5-leaf)		
SPRINGS, REAR	Type; Length & Width	Leaf; 52" x 2 1/2"			Leaf; 52" x 2 1/2"		
	No. of Leaves; Cap. at Ground	6; 1900 lb.			6; 1900 lb.		
STEERING	Ball-Gear Ratio; Wheel Dia.	24.0 to 1; 17"			24.0 to 1; 17"		
TIRES	Standard	6.70-15/4PR Front, Single Rear & Spare ●			7-17.5/6PR Front & Single Rear		
	Maximum	7-17.5/6PR Front, Single Rear & Spare			8-19.5/8PR Front & Single Rear		
TRANSFER CASE	No. of Speeds	2			2		
TRANSMISSION	Type	Synchro-Mesh			Synchro-Mesh		
	No. of Speeds	3			3		
WHEELS	Type	6-Stud Disc			8-Stud Disc		
	Std. Rim Size; Max. Rim Size	5.00"; 5.25"			5.25"; 5.25"		

EQUIPMENT SHOWN IN LIGHT FACE ITALICS OPTIONAL AT EXTRA COST

♣ 42, 52 and 62 amp Delcotron AC generators also available as extra cost options.

▲ Free-wheeling front hubs optional at extra cost. ● 7.10-15/4PR tires standard on Carryalls.

All illustrations and specifications contained in this literature are based on the latest product information available at the time of publication. The right is reserved to make changes at any time in prices, colors, materials, equipment, specifications and models, and also to discontinue models.

CHEVROLET MOTOR DIVISION OF GENERAL MOTORS CORPORATION, DETROIT 2, MICHIGAN

Litho in U.S.A. September, 1961