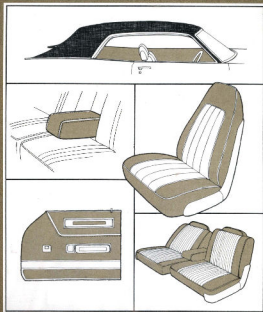


# CHRYSLER

## COLOR & TRIM SELECTOR

- IMPERIAL
- NEW YORKER
- TOWN & COUNTRY
- 300
- NEWPORT CUSTOM
- NEWPORT



CHANGES: 1971 **CHRYSLER** SHOWROOM COLOR AND TRIM SELECTOR

---

Changes have been made since the publication of your 1971 Chrysler Color and Trim Selector to give your customers a broader choice. Changes noted below should be made in your book to keep it current.

1. LEMON TWIST - Code FY1 - has been made an extra-cost paint.  
Availability does not change.
2. BURGUNDY vinyl roof - Code VIM has been cancelled for Imperial.  
Remove all reference to this code on page 44.
3. SLATE GRAY METALLIC - Code GA8 - has been cancelled. Remove this paint chip from the color deck in your book.

Delete GA8 from the following trim codes:

Burgundy - pages 4, 7, 8

Gunmetal - pages 4, 7, 8, 12, 15, 35

Russet - pages 7, 11, 24, 28, 36

Blue - pages 11, 27, 28, 31, 35, 40

Beige & Black - pages 31, 43

Gunmetal Vinyl Roof - page 45

4. CHARCOAL METALLIC - Code EA9 - has been extended to all Chrysler models.

Charcoal Metallic is RECOMMENDED with all Blue, White, Black and White & Black interior trims. Add EA9 to all Blue interior trims on pages 12, 15, 24, 27, 28, 31, 35, 40.

Charcoal Metallic is AVAILABLE with all Russet and Beige & Black interior trims.

Add (EA9) to: Russet interior trims on pages 24, 28, 36 and Beige & Black interior trims on pages 31, 43.

(Continued reverse side)

5. HONEYDEW - Code GY4 - has been extended to all Chrysler models. Honeydew is RECOMMENDED with all Gold, White, Black and White & Black interior trims. Add GY4 to all Gold interior trims on pages 12, 23, 27, 35, 40. Honeydew is also RECOMMENDED with a Gold, Black or White Vinyl Roof with all interiors. Add GY4 to page 45 with GY5, GY9, with all interiors. Honeydew is AVAILABLE with all Green and Beige & Black interior trims. Add (GY4) to: All Green interior trims on pages 12, 15, 16, 19, 20, 23, 27, 31, 32, 35, 36, 40. All Beige & Black interior trims on pages 31, 43. Honeydew is also AVAILABLE with a Green Vinyl Roof with Green interiors. Add (GY4) to page 45 with GY5, GJ4 with Green interiors.
6. A new paint Stripe and Vinyl Molding page is enclosed. Remove old page 48 and insert new page 48R.
7. A new cover page for the deck of colors is enclosed also. Remove the old cover and replace with the new.

THESE CHANGES SHOULD BE MADE AS SOON AS POSSIBLE TO KEEP YOUR COLOR AND TRIM SELECTOR UP TO DATE, AND OFFER YOUR CUSTOMERS THE WIDEST CHOICE.

# **Color and Trim Selector**

---

## How to Use This Book

---

Use the index on the opposite page (3) to find a particular car model—for example, New Yorker 4-door hardtop. Or use the index to find a particular seat—for example, cloth and vinyl 3-in-1 divided bench seat.

The page with the seat illustration tells you on what models the seat is available. On the opposite page you'll find swatches of the upholstery choices for that seat.

The section on "Stripes, Moldings, Interior Accents and Vinyl Roofs" gives information on those trim items for all Chrysler models.

This book contains information that was accurate at the time of publication. Chrysler Motors Corporation reserves the right to make changes, without notice or obligation, in colors, materials and specifications. For this reason, the availability and code number of specific items should be determined from the latest code lists.

**CHRYSLER**



**CHRYSLER**  
MOTORS CORPORATION

# 1971 Chrysler

## TABLE OF CONTENTS

Model, Body Style	Page No.	Seat Style	Material	Page No.
<b>Imperial</b>		Bench <sup>(1)</sup> .....	Cloth & Leather.....	5
4-door Hardtop.....	5, 6	Bench <sup>(1)</sup> .....	Leather.....	6
2-door Hardtop.....	9, 10	Bench <sup>(2)</sup> .....	Cloth & Leather.....	9
		Bucket <sup>(3)</sup> .....	Leather.....	10
<b>New Yorker</b>		Bench <sup>(2)</sup> .....	Cloth & Vinyl.....	13
4-door Sedan.....	13, 14, 17	Bench <sup>(1)</sup> .....	Cloth & Vinyl.....	14
4-door Hardtop.....	13, 14, 17	Bench <sup>(1)</sup> .....	Vinyl.....	17
2-door Hardtop.....	13, 18	Bench <sup>(2)</sup> .....	Leather.....	17
		Bucket <sup>(3)</sup> .....	Vinyl.....	18
<b>300</b>		Bucket.....	Vinyl.....	21
4-door Hardtop.....	21, 22, 25	Bench <sup>(2)</sup> .....	Cloth & Vinyl.....	22
2-door Hardtop.....	21, 22, 25	Bench <sup>(2)</sup> .....	Vinyl.....	25
<b>Newport Custom</b>		Bench <sup>(2)</sup> .....	Cloth & Vinyl.....	26
4-door Sedan.....	26, 29, 30, 33	Bench <sup>(1)</sup> .....	Vinyl.....	29
4-door Hardtop.....	26, 29, 30, 33	Bench <sup>(1)</sup> .....	Cloth & Vinyl.....	30
2-door Hardtop.....	26, 29	Bench <sup>(1)</sup> .....	Vinyl.....	30
<b>Newport</b>		Bench.....	Cloth & Vinyl.....	34
4-door Sedan.....	34, 37	Bench.....	Vinyl.....	37
4-door Hardtop.....	34, 37	Bucket.....	Vinyl.....	38
2-door Hardtop.....	34, 37, 38			
<b>Town &amp; Country</b>		Bench <sup>(2)</sup> .....	Vinyl.....	41
2- and 3-seat Wagons.....	41, 42	Bench <sup>(1)</sup> .....	Vinyl.....	41
		Bench <sup>(1)</sup> .....	Cloth & Vinyl.....	42

(1) 3-in-1 divided bench seat with individual adjustment, passenger recliner, center armrests.

(2) Includes folding center armrest.

(3) Passenger recliner and center cushion with armrest are standard.



**MD89 Blue**

Exteriors: EA9, GB2, GB9, EW1, TX9,  
BL1



**MD77 Green**

Exteriors: GF3, GF9, GJ4, BL1, EW1,  
TX9 (314, 315)



**MDX9 Black**

Exteriors: All Imperial colors



**MDTT Saddle & Tan**

Exteriors: BL1, FL6, GT8, EW1, TX9  
(GF3, GF9, GJ4)



**MDY5 Gold**

Exteriors: EW1, TX9, GY4, GY5, GY9  
(GF9, GT8, BL1)



**MDN9 Burgundy**

Exteriors: EA9, BL1, GM8, EW1, TX9  
(GA4, GAY)



**MDA6 Gunmetal**

Exteriors: GA4, GA8, EW1, TX9

Exterior paint codes shown in large type are recommended.

Exterior paint codes shown in [ ] are available.

## CLOTH AND LEATHER 3-in-1 DIVIDED BENCH SEAT

with individual adjustment, individual center armrests, passenger recliner  
(Code MD).

---



Standard in **Imperial** 4-door Hardtop.

- Seating surfaces are cloth and leather
- Bolster and back of seat-back are matching vinyl
- Center armrest in rear seat

## LEATHER 3-in-1 DIVIDED BENCH SEAT

with individual adjustment, individual center armrests, passenger recliner  
(Code ML).

---



Optional in **Imperial** 4-door Hardtop.

- Seating surfaces are leather
- Bolster and back of seat-back are matching vinyl
- Center armrest in rear seat

**MLB8 Russet**Exteriors: GE7, DL1, EW1, TX9  
(EA8, GA8)**MLB9 Blue**Exteriors: EA9, GB2, GB9, EW1, TX9,  
DL1**MLF7 Green**Exteriors: GF3, GF6, GJ4, BL1, EW1,  
TX9 (GY4, GY8)**MLX9 Black**

Exteriors: All Imperial colors

**MLT7 Saddle**Exteriors: BL1, FL6, GT6, EW1, TX9  
(GF3, GF6, GA8)**MLXW White & Black**

Exteriors: All Imperial colors

**MLM9 Burgundy**Exteriors: EA9, BL1, GA8, EW1, TX9  
(JA4, GA8)**MLA6 Gunmetal**

Exteriors: GA4, GA8, EW1, TX9

**MLY5 Gold**Exteriors: EW1, TX9, GF4, GY5, GY9  
(GF6, GT6, DL1)

Exterior paint codes shown in large type are recommended.

Exterior paint codes shown in ( ) are available.



**MB09 Blue**

Exteriors: EA9, GB2, GB9, EW1, TX9  
(BL1)



**MBF7 Green**

Exteriors: GF3, GF9, GJ4, BL1, EW1,  
TX9 (GY4, GY5)



**MBX9 Black**

Exteriors: All Imperial colors



**MBT1 Saddle & Tan**

Exteriors: BL1, FL4, GT8, EW1, TX9  
(GF1, GF9, GX0)



**MBY5 Gold**

Exteriors: EW1, TX9, GY4, GY5, GY9  
(GF9, GT8, BL1)



**MBM9 Burgundy**

Exteriors: EA9, BL1, GM8, EW1, TX9  
(J44, ~~GA9~~)



**MBA6 Gunmetal**

Exteriors: GA4, ~~GA9~~, EW1, TX9

Exterior paint codes shown in large type are recommended.  
Exterior paint codes shown in ( ) are available.

## CLOTH AND LEATHER SPLIT-BACK BENCH SEAT

with pull-down center armrest (Code MB).

---



Standard in **Imperial** 2-door Hardtop.

- Cloth and leather seating surfaces
- Bolster and back of seat-back are matching vinyl
- Center armrest in rear seat

## LEATHER BUCKET SEATS

with passenger recliner, center cushion and pull-down center armrest (Code MR).

---



Optional in **Imperial** 2-door Hardtop.

- Leather seating surfaces
- Bolster and back of seat-back are matching vinyl
- Center armrest in rear seat

**MRX9 Black**

Exteriors: All Imperial colors

**MRFT Green**Exteriors: GF3, GF9, GJ4, BL1, EW1,  
TX9 (GF4, GY5)**MRB2 Light Blue**Exteriors: EA9, GB2, GB6, EW1, TX9  
BL1 (GAB)**MRT7 Saddle**Exteriors: BL1, FL6, GT8, EW1, TX9  
(GF3, GF9, GAB)**MRYS Gold**Exteriors: EW1, TX9, GF4, GY5, GY9  
(GF9, GT8, BL5)**MRXW White & Black**

Exteriors: All Imperial colors

**MRE8 Russet**Exteriors: GE7, BL1, EW1, TX9  
(FAB, GAB)

Exterior paint codes shown in large type are recommended.  
Exterior paint codes shown in ( ) are available.



**H9B7—H3B7 Blue**

Exteriors: G82, G87, EW1, TX9  
(BL1)



**H9Y5—H3Y5 Gold**

Exteriors: EW1, TX9, GY5, GY9  
(GF9, BL1, GT8)



**H9F7—H3F7 Green**

Exteriors: GF3, GF9, GJ4, BL1, EW1,  
TX9 (G19)



**H9A6—H3A6 Gunmetal**

Exteriors: GA4, G96, EW1, TX9  
(F15)



**H9X9—H3X9 Black**

Exteriors: All Chrysler colors

Exterior paint codes shown in large type are recommended.  
Exterior paint codes shown in ( ) are available.

## CLOTH AND VINYL BENCH SEAT

with pull-down center armrest  
(Code H9).



Standard in **New Yorker** 4-door Sedan  
and 4-door Hardtop.

---

## CLOTH AND VINYL SPLIT-BACK BENCH SEAT

with pull-down center armrest (Code H3).



Standard in **New Yorker**  
2-door Hardtop.

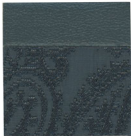
## CLOTH AND VINYL 3-in-1 DIVIDED BENCH SEAT

with individual adjustment, passenger recliner, center armrests (Code H7).

---



Optional in **New Yorker** 4-door Sedan and 4-door Hardtop.



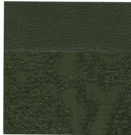
**H7A6 Gunmetal**

Exteriors: GA4, ~~GA8~~, EW1, TX9  
(PB)



**H7B7 Blue**

Exteriors: GB2, GB7, EW1, TX9  
(BL)



**H7F7 Green**

Exteriors: GF3, GF6, GJ4, BL1, EW1, TX9  
(GR)



**H7X9 Black**

Exteriors: All Chrysler colors

Exterior paint codes shown in large type are recommended.  
Exterior paint codes shown in ( ) are available.



**H8F7 Green**

Exteriors: GF3, GF9, GJ4, BL1, EW1, TX9  
(GTY)



**H8L2 Beige**

Exteriors: GK5, BL1, FL6, GT8, EW1, TX9  
(GF3, GF9, FTY, GGT, FES)



**H8X9 Black**

Exteriors: All Chrysler colors



**HLT7 Saddle (Leather)**

Exteriors: BL1, FL6, GT8, EW1, TX9  
(GF3, GF9, FTY, SAS, FES)

Exterior paint codes shown in large type are recommended.  
Exterior paint codes shown in ( ) are available.

## VINYL 3-in-1 DIVIDED BENCH SEAT

with individual adjustment,  
passenger recliner, center armrests  
(Code HB).



Optional in **New Yorker** 4-door Sedan  
and 4-door Hardtop.

---

## LEATHER 3-in-1 DIVIDED BENCH SEAT

with individual adjustment,  
passenger recliner, center armrests  
(Code HL).



Optional in **New Yorker**  
4-door Sedan and  
4-door Hardtop.

*Seating surfaces are leather; bolster and  
back of seat-back are matching vinyl.*

## VINYL BUCKET SEATS

Passenger recliner and center cushion with armrest are standard (Code H6).

---



Optional in **New Yorker** 2-door Hardtop.



**H6F7 Green**

Exteriors: GF3, GF9, GJ4, BL1, EW1, TX9  
(GY5)



**H6T7 Saddle**

Exteriors: BL1, FL8, GT8, EW1, TX9  
(GP3, GF9, FY1, GX6, FE6)



**H6X9 Black**

Exteriors: All Chrysler colors



**H6XW White**

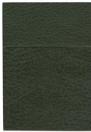
Exteriors: All Chrysler colors

Exterior paint codes shown in large type are recommended.  
Exterior paint codes shown in ( ) are available.



**86L2 Beige**

Exteriors: GK6, BL1, FL6, GTR, EW1,  
TX9 (GF3, GF9, FY, G67, F65)



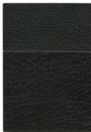
**86F7 Green**

Exteriors: GF3, GF9, GJ4, BL1, EW1,  
TX9 (GY)



**86T7 Saddle**

Exteriors: BL1, FL6, GTR, EW1, TX9  
(GF3, GF9, FY, G66, F65)



**86X9 Black**

Exteriors: All Chrysler colors



**86XW White & Black**

Exteriors: All Chrysler colors

Exterior paint codes shown in large type are recommended.  
Exterior paint codes shown in ( ) are available.

## VINYL BUCKET SEATS

(Code S6)



Standard in 300 4-door Hardtop and 2-door Hardtop.

## CLOTH AND VINYL SPLIT-BACK BENCH SEAT

with pull-down center armrest (Code S3).

---



Optional in 300 4-door Hardtop and 2-door Hardtop.



#### **83F7 Green**

Exteriors: GF3, GF8, GJ4, BL1, EW1, TX9  
(GY8)



#### **83Y5 Gold**

Exteriors: EW1, TX9, GY5, GY9  
(GF8, BL1, GY8)



#### **83L2 Beige**

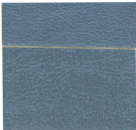
Exteriors: GR6, BL1, FL6, GT8, EW1, TX9  
(GF3, GR5, PW1, GR7, PE6)

Exterior paint codes shown in large type are recommended.  
Exterior paint codes shown in ( ) are available.



**S4E8 Russet**

Exteriors: GE7, BL1, EW1, TX9  
(SAC)



**S4B2 Blue**

Exteriors: G82, G87, EW1, TX9  
(BLV)



**S4X9 Black**

Exteriors: All Chrysler colors

Exterior paint codes shown in large type are recommended.  
Exterior paint codes shown in ( ) are available.

## VINYL SPLIT-BACK BENCH SEAT

with pull-down center armrest (Code S4).

---



Optional in **300** 4-door Hardtop and 2-door Hardtop.

## CLOTH AND VINYL SPLIT-BACK BENCH SEAT

with pull-down center armrest (Code L3).

---



Standard in **Newport Custom** 4-door Sedan, 4-door Hardtop and 2-door Hardtop.


**L3L2 Beige**

Exteriors: GR8, BL1, FL6, GT8, EW1,  
TX9 (GF3, GF8, PV1, GE7, FE8)


**L3F7 Green**

Exteriors: GF3, GF8, GJ4, BL1, EW1,  
TX9 (GY6)


**L3Y5 Gold**

Exteriors: EW1, TX9, GY5, GY8  
(GF8, BL1, GR8)


**L3X9 Black**

Exteriors: All Chrysler colors


**L3B2 Blue**

(Sedan only)  
Exteriors: GR8, GE7, EW1, TX9  
(BL1, GR8)

Exterior paint codes shown in large type are recommended.  
Exterior paint codes shown in ( ) are available.



**L468 Russet**

Exteriors: G67, BL1, EW1, TX9  
(GAB)



**L482 Blue**

(N.A. Sedan)  
Exteriors: GB2, GB7, EW1, TX9  
(BL1, ~~GB1~~)



**L4X9 Black**

Exteriors: All Chrysler colors

Exterior paint codes shown in large type are recommended.  
Exterior paint codes shown in ( ) are available.

## VINYL SPLIT-BACK BENCH SEAT

with pull-down center armrest (Code L4).

---



Optional in **Newport Custom** 4-door Sedan, 4-door Hardtop and 2-door Hardtop.

## CLOTH AND VINYL 3-in-1 DIVIDED BENCH SEAT

with individual adjustment, passenger recliner, center armrests (Code L7).

---



Optional in **Newport Custom** 4-door Sedan and 4-door Hardtop.



#### **L7XL Beige & Black**

Exteriors: All Chrysler colors except GA4, **GA8**  
(B1, G15, G16)



#### **L7B2 Blue**

Exteriors: GB2, GB7, GW1, TX9  
(BL1, **GA8**)



#### **L7F7 Green**

Exteriors: GF3, GF8, GJ4, BL1, EW1, TX9  
(G15)

Exterior paint codes shown in large type are recommended.  
Exterior paint codes shown in [ ] are available.



**LBF7 Green**

Exteriors: GF3, GF9, GJ4, BL1, EW1, TX3  
(0775)



**LEX9 Black**

Exteriors: All Chrysler colors

Exterior paint codes shown in large type are recommended.  
Exterior paint codes shown in ( ) are available.

## VINYL 3-in-1 DIVIDED BENCH SEAT

with individual adjustment, passenger recliner, center armrests (Code LB).

---



Optional in **Newport Custom** 4-door Sedan and 4-door Hardtop.

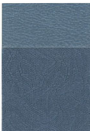
## CLOTH AND VINYL BENCH SEAT

(Code E1)

---



Standard in **Newport** 4-door Sedan, 4-door Hardtop and 2-door Hardtop.



**E1B2 Blue**

Exteriors: GB2, GB7, EW1, TX9  
(BL1, ~~GB6~~)



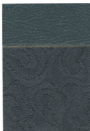
**E1F7 Green**

Exteriors: GF3, GF8, GJ4, BL1, EW1,  
TX9 (GY1)



**E1Y5 Gold**

Exteriors: EW1, TX9, GY5, GY9  
(GF8, BL1, GY8)



**E1A6 Gunmetal**

Exteriors: GA4, ~~GB6~~, EW1, TX9  
(PE3)



**E1L2 Beige**

(Sedan only)  
Exteriors: GX6, BL1, FL6, GT8, EW1,  
TX9 (GF3, GF8, FY1, GT7, PE3)



**E1X9 Black**

Exteriors: All Chrysler colors

Exterior paint codes shown in large type are recommended.  
Exterior paint codes shown in [ ] are available.

**E2L2 Beige**

(N.A. Sedan)

Exteriors: GK9, BL1, FL8, GTR, EW1, TX9  
(GF3, GF9, FY1, GE7, FE5)**E2F7 Green**Exteriors: GF3, GF9, GJ4, BL1, EW1, TX9  
(GY9)**E2E8 Russet**Exteriors: GE7, BL1, EW1, TX9  
(J44)**E2X9 Black**

Exteriors: All Chrysler colors

Exterior paint codes shown in large type are recommended.  
Exterior paint codes shown in ( ) are available.

## VINYL BENCH SEAT

(Code E2)

---



Optional in **Newport** 4-door Sedan, 4-door Hardtop and 2-door Hardtop.

## VINYL BUCKET SEATS

(Code E6)

---



Optional in **Newport** 2-door Hardtop.



**E6T7 Saddle**

Exteriors: BL1, FL6, GT6, EW1, TX9  
(GF3, GF5, PP1, GK3, YG3)



**E6X9 Black**

Exteriors: All Chrysler colors



**E6XW White & Black**

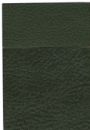
Exteriors: All Chrysler colors

Exterior paint codes shown in large type are recommended.  
Exterior paint codes shown in ( ) are available.



**L4B2 Blue**

Exteriors: GB2, GB7, EW1, TX9  
(BL1, GA6)



**L4F7—L8F7 Green**

Exteriors: GF3, GF9, GJ4, BL1, EW1,  
TX9 (G11)



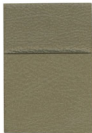
**L4X9—L8X9 Black**

Exteriors: All Chrysler colors



**L4T7—L8T7 Saddle**

Exteriors: BL1, FL6, GT8, EW1, TX9  
(GF1, GF9, FY1, GA6, PB5)



**L8Y5 Gold**

Exteriors: EW1, TX9, GY5, GF9  
(GF9, BL1, GT8)

Exterior paint codes shown in large type are recommended.  
Exterior paint codes shown in ( ) are available.

## VINYL SPLIT-BACK BENCH SEAT

with pull-down center armrest  
(Code L4).



Standard in **Town & Country**  
2- and 3-seat Wagons.

---

## VINYL 3-in-1 DIVIDED BENCH SEAT

with individual adjustment,  
passenger recliner, center armrests  
(Code L8).



Optional in **Town & Country**  
2- and 3-seat Wagons.

## CLOTH AND VINYL 3-in-1 DIVIDED BENCH SEAT

with individual adjustment, passenger recliner, center armrests (Code L7).

---



Optional in **Town & Country** 2- and 3-seat Wagons.



#### **L7XL Beige & Black**

Exteriors: All Chrysler colors except G44, **G46**  
 P71, G75, G76

# IMPERIAL VINYL ROOFS – Standard



## Green—Code Y1F

Exteriors: GF3, GF9 with all interiors.  
BL1, EW1 with Green interiors.

(GJ4, GY4, GY9) with Green interiors. (BL1, EW1) with Black or White & Black interiors. (YX6) with White & Black interiors.



## Gold—Code Y1Y

Exteriors: GY4, GY5, GY9 with all interiors.

(BL1, EW1) with Gold interiors. (TDE) with Gold or White & Black interiors. (BL1, EW1) with Black or White & Black interiors.



## Walnut—Code Y1T

Exteriors: GT8 with all interiors. BL1, FL6, EW1 with Saddle or Saddle & Tan interiors.

(BL1, EW1) with Black or White & Black interiors. (Y14, TDE) with White & Black interiors. (GMS) with Saddle, Saddle & Tan or White & Black interiors.



## Burgundy—Code Y1M

Exteriors: GMB with Burgundy interiors.

(GMB) with Black or White & Black interiors.



## White—Code Y1W

Exteriors: All Imperial colors with all interiors.



## Black—Code Y1X

Exteriors: All Imperial colors with all interiors.

Exterior paint codes shown in large type are recommended.  
Exterior paint codes shown in ( ) are available.

# CHRYSLER VINYL ROOFS

Optional at extra cost on all Sedans and Hardtops. (Not available on Town & Country Wagons.)



## Green—Code V1F

Exteriors: GP3, GP9 with all interiors. BL1, EW1 with Green interiors.

GP3, GP9 with Green interiors. (BL1, EW1, TX9 with Black, Beige & Black or White & Black interiors.)



## Gold—Code V1Y

Exteriors: GY5, GY9 with all interiors.

GY5, GY9 with Gold interiors. (TX9 with Gold, White & Black or Beige & Black interiors. (BL1, EW1) with Black, White & Black or Beige & Black interiors.)



## Walnut—Code V1T

Exteriors: GT8 with all interiors. FL6, BL1, EW1 with Saddle or Beige interiors.

(BL1, EW1) with Black, White & Black or Beige & Black interiors. (TX9, FL6) with White & Black or Beige & Black interiors. (GK3) with Saddle, Beige & Black, White & Black or Beige interiors.



## Gunmetal—Code V1A

Exteriors: GA4, ~~GA5~~ with all interiors. EW1, TX9 with Gunmetal interiors.

(EW1) with Black or White & Black interiors. (TX9) with White & Black or Beige & Black interiors.



## Blue—Code V1B

Exteriors: GB2, GB7 with all interiors. BL1, EW1 with Blue interiors.

(TX9) with Blue, Beige & Black or White & Black interiors. (BL1, EW1) with Black, Beige & Black or White & Black interiors.



## White—Code V1W

Exteriors: All Chrysler colors with all interiors.



## Black—Code V1X

Exteriors: All Chrysler colors with all interiors.

Exterior paint codes shown in large type are recommended.

Exterior paint codes shown in ( ) are available.

## Imperial Protective Vinyl Body Side Molding

The vinyl roof is standard on Imperial. The vinyl side molding, which protects the side of the car from damage to the paint, is also standard. The color of the side molding will be the same as the color of the vinyl roof which the owner selects with these exceptions.

1. When a black exterior is selected, the vinyl side molding will be black regardless of the color of the top.
2. When a white roof is selected, the side molding color is coordinated with the exterior color:

Vinyl Roof	Vinyl Molding Color	Exteriors
White .....	Green .....	GF3, GF9
	Walnut .....	BL1, GT8
	Gold .....	GY4, GY5, GY9
	Burgundy .....	GM8
	Black .....	all other exteriors

NOTE: See Page 44 for vinyl roof materials.

## 1971 Imperial Interior Color Accents

Trim Code	Material	Seat Inset	Bulster	Carpet	Instrument Panel and Shelf Panel	Steering Wheel	Headlining
MD46-MD46	C & L	Gunmetal	Gunmetal	Gunmetal	Gunmetal	Gunmetal	Gunmetal
MD89-MD89	C & L	Dk. Blue	Dk. Blue	Dk. Blue	Dk. Blue	Dk. Blue	Dk. Blue
MD77-MD77	C & L	Dk. Green	Dk. Green	Dk. Green	Dk. Green	Dk. Green	Dk. Green
MDM9-MDM9	C & L	Burgundy	Burgundy	Burgundy	Burgundy	Burgundy	Burgundy
MD77-MD77	C & L	Lt. Tan	Dk. Tan	Dk. Tan	Dk. Tan	Dk. Tan	Lt. Tan
MDX3-MDX3	C & L	Black	Black	Black	Black	Black	Black
MDY5-MDY5	C & L	Gold	Gold	Gold	Gold	Gold	Gold
ML46	L & V	Gunmetal	Gunmetal	Gunmetal	Gunmetal	Gunmetal	Gunmetal
ML82	L & V	Lt. Blue	Lt. Blue	Lt. Blue	Dk. Blue	Dk. Blue	Lt. Blue
ML89	L & V	Dk. Blue	Dk. Blue	Dk. Blue	Dk. Blue	Dk. Blue	Dk. Blue
ML82-ML82	L & V	Russet	Russet	Russet	Russet	Russet	Russet
ML77-ML77	L & V	Dk. Green	Dk. Green	Dk. Green	Dk. Green	Dk. Green	Dk. Green
ML89	L & V	Burgundy	Burgundy	Burgundy	Burgundy	Burgundy	Burgundy
ML77-ML77	L & V	Dk. Tan	Dk. Tan	Dk. Tan	Dk. Tan	Dk. Tan	Dk. Tan
MLX3-MLX3	L & V	Black	Black	Black	Black	Black	Black
MLXW-MLXW	L & V	White	White	Black	Black	Black	White
MLY5-MLY5	L & V	Gold	Gold	Gold	Gold	Gold	Gold

C—Cloth V—Vinyl L—Leather Lt.—Light Med.—Medium Dk.—Dark

# Chrysler Accent Paint Stripes and Protective Vinyl Body Side Molding

**ACCENT STRIPES\***—Standard on New Yorker models. (Not available on other models.)

TRIM CODE	EXTERIOR COLORS															
	GA4	EA9	GB2	GB7	FE5	GE7	GF3	GF9	GJ4	GK6	BL1	FL6	FQ5	GT8	EW3	TX9
H3B7, H7B7, H9B7	—	2	6	2	—	—	—	—	—	—	4	—	—	—	4	5
H3F7, H6F7, H7F7, H9F7, H9F7	—	—	—	—	—	—	1	1	1	—	4	—	—	—	4	5
H3Y5, H9Y5	—	—	—	—	—	—	—	1	—	—	4	—	—	—	4	5
H3A6, H7A6, H9A6	6	—	—	—	4	—	—	—	—	—	—	—	—	—	4	5
H8L2	—	—	—	—	4	6	1	1	—	6	4	4	—	5	4	5
H5XW	6	6	6	2	4	6	1	1	1	6	4	4	4	5	4	5
H3X9, H6X9, H7X9, H8X9, H9X9	6	6	6	2	4	6	1	1	1	6	4	4	4	5	4	5
H6T7, HLT7	—	—	—	—	4	—	1	1	—	6	4	4	—	5	4	5

**VINYL SIDE MOLDING**—Standard on 300 & Newport Custom models. (Not available on other models.)

TRIM CODE	EXTERIOR COLORS															
	GA4	EA9	GB2	GB7	FE5	GE7	GF3	GF9	GJ4	GK6	BL1	FL6	FQ5	GT8	EW3	TX9
S4B2	—	E	E	E	—	—	—	—	—	—	C	—	—	—	E	E
S3F7, S6F7	—	—	—	—	A	—	—	A	A	—	C	—	—	—	E	E
S3Y5	—	—	—	—	—	—	—	A	—	—	C	—	—	C	E	E
S3L2, S6L2	—	—	—	—	E	E	A	A	—	E	C	E	—	C	E	E
S4X9, S6X9	D	E	E	E	E	E	A	A	A	E	C	E	E	C	E	E
S6T7	—	—	—	—	E	—	A	A	—	E	C	E	—	C	E	E
S4E8	—	E	—	—	—	E	—	—	—	—	C	—	—	—	E	E
S6XW	D	E	E	E	E	E	A	A	A	E	C	E	E	C	E	E

## Accent Stripe Colors

1-Green.....	V7F
2-Blue.....	V7B
3-Gold.....	V7Y
4-Black.....	V7X
5-White.....	V7W
6-Red.....	V7R

## Code

## Vinyl Side Molding Colors

A-Green.....	V5F
B-Gold.....	V5Y
C-Tan.....	V5T
D-Gunmetal.....	V5A
E-Black.....	V5R

## Code

\*Accent stripes may be  
deleted by specifying  
Code V7B.

[Black only available on Newport Custom.

GA4

EA9

GB2

GB7

GB9

FE5

GF3

GF9

GJ4

GK6

BL1

FL6

GM8

FQ5

GT8

EW1

TX9

FY1

GY4

GY5

GY9

# Exterior Colors

The deep beauty of Chrysler comes from three coats of acrylic enamel in the color of your choice, applied over two coats of epoxy primer. The result is a super-hard finish that resists grime and weather, and can always be buffed to restore new-car lustre.

**Special color at extra cost:**

**FY1 LEMON TWIST**

---

**Available all models:**

**A9 CHARCOAL METALLIC**

**Y4 HONEYDEW**

GA4

EA9

GB2

GB7

GB9

FE5

GF3

GF9

GJ4

GK6

BL1

FL6

GM8

FQ5

GT8

EW1

TX9

FY1

GY4

GY5

GY9

GA4 WINCHESTER GRAY METALLIC

EA9

GB2

GB7

GB9

FE5

GF3

GF9

GJ4

GK6

BL1

FL6

GM8

FQ5

GT8

EW1

TX9

FY1

GY4

GY5

GY9

**EA9 CHARCOAL METALLIC**

Available on Imperial only

**GB2**

**GB7**

**GB9**

**FE5**

**GF3**

**GF9**

**GJ4**

**GK6**

**BL1**

**FL6**

**GM8**

**FQ5**

**GT8**

**EW1**

**TX9**

**FY1**

**GY4**

**GY5**

**GY9**

**GB2 GLACIAL BLUE METALLIC**

GB7

GB9

FE5

GF3

GF9

GJ4

GK6

BL1

FL6

GM8

FQ5

GT8

EW1

TX9

FY1

GY4

GY5

GY9

**GB7 EVENING BLUE METALLIC**

Not available on Imperial

GB9

FE5

GF3

GF9

GJ4

GK6

BL1

FL6

GM8

FQ5

GT8

EW1

TX9

FY1

GY4

GY5

GY9

**GB9 MIDNIGHT BLUE METALLIC**

Available on Imperial only

**FE5**

**GF3**

**GF9**

**GJ4**

**GK6**

**BL1**

**FL6**

**GM8**

**FQ5**

**GT8**

**EW1**

**TX9**

**FY1**

**GY4**

**GY5**

**GY9**

**FE5 RALLYE RED**

Not available on Imperial

GF3

GF9

GJ4

GK6

BL1

FL6

GM8

FQ5

GT8

EW1

TX9

FY1

GY4

GY5

GF3 AMBER SHERWOOD METALLIC

GY9

GF9

GJ4

GK6

BL1

FL6

GM8

FQ5

GT8

EW1

TX9

FY1

GY4

GY5

GY9

GF9 AVOCADO METALLIC

**GJ4**

**GK6**

**BL1**

**FL6**

**GM8**

**FQ5**

**GT8**

**EW1**

**TX9**

**FY1**

**GY4**

**GY5**

**GJ4 APRIL GREEN METALLIC**

**GY9**

GK6

BL1

FL6

GM8

FQ5

GT8

EW1

TX9

FY1

GY4

GY5

GY9

GK6 AUTUMN BRONZE METALLIC

**BL1**

**FL6**

**GM8**

**FQ5**

**GT8**

**EW1**

**TX9**

**FY1**

**GY4**

**GY5**

**BL1 SANDALWOOD BEIGE**

**GY9**

FL6

GM8

FQ5

GT8

EW1

TX9

FY1

GY4

GY5

FL6 AZTEC GOLD METALLIC

GY9

GM8

FQ5

GT8

EW1

TX9

FY1

GY4

GY5

GY9

**GM8 SPARKLING BURGUNDY  
METALLIC**

Available on Imperial only

**FQ5**

**GT8**

**EW1**

**TX9**

**FY1**

**GY4**

**GY5**

**FQ5 CORAL TURQUOISE METALLIC**

**GY9**

GT8

EW1

TX9

FY1

GY4

GY5

GT8 TAHITIAN WALNUT METALLIC

GY9

**EW1**

**TX9**

**FY1**

**GY4**

**GY5**

**EW1 SPINNAKER WHITE**

**GY9**

TX9

FY1

GY4

GY5

TX9 FORMAL BLACK

GY9

**FY1**

**GY4**

**GY5**

**FY1 LEMON TWIST**

Not available on Imperial

**GY9**

**GY4**

**GY4 HONEYDEW**

**GY5**

**GY9**

**GY5 GY5 CRYSTAL DAWN METALLIC**

**GY9**

