

# THE THIRD GENERATION MONTE CARLO.



*Monte Carlo*



# WELCOME TO A VERY SPECIAL AUTOMOBILE.

With immense pride we present a trim and timely  
new edition of Chevrolet's popular personal luxury car:

The Third Generation Monte Carlo.

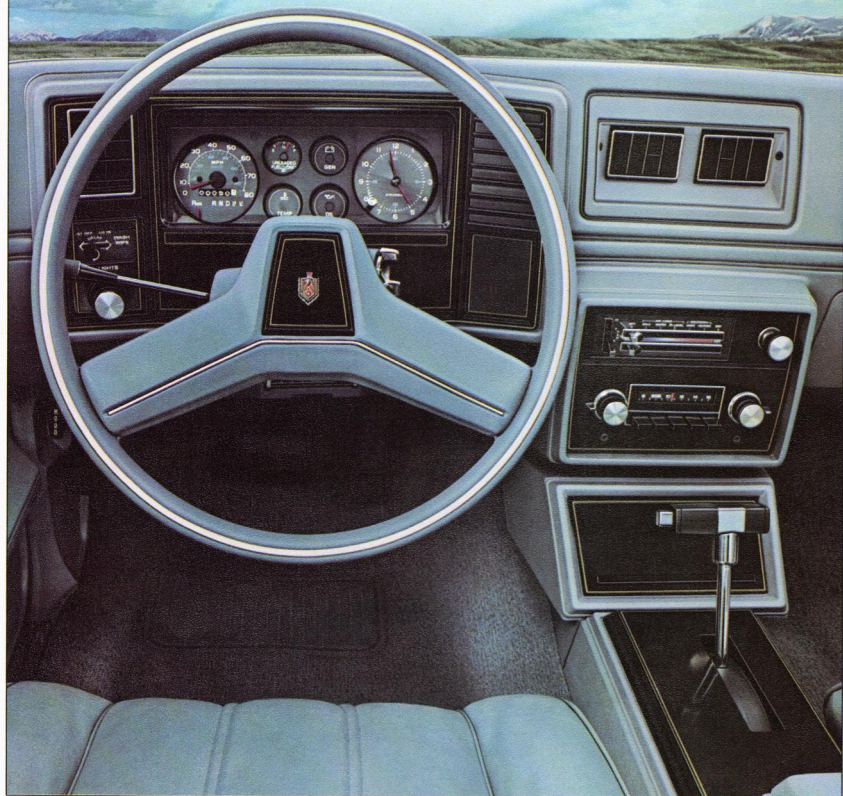
Although thoroughly redesigned, today's Monte Carlo clearly  
retains the unique personality of Monte Carlos past.

You can see it in the stately stance and sculptured sides.

You can feel it in the way a Monte Carlo moves.

It is a car beautifully in tune with the  
times, yet emphatically apart from the crowd.

We think you'll be impressed.



Monte Carlo instrument panel with center console and bucket seats.





Available on Monte Carlo are many Options and Custom Features. Many are illustrated or described in this catalog. Availability often depends on the model and other equipment selected. Your Chevrolet dealer has all the details. Copyright 1977, Chevrolet Motor Division, General Motors Corporation.

Monte Carlo Sport Coupe.



# YOUR OWN PERSONAL "DRIVER'S SUITE."

The new Monte Carlo interior is a beautifully furnished, tastefully finished room with a view. A very private, very peaceful place to call your own.

From the pull straps on the doors to the deeply carpeted floor, everything here is here for your pleasure, your comfort, your delight.



Available Special Custom Interior with 55/45 split seat and center armrest finished in Madeira velour cloth.



# ABOVE ALL, IT DEMANDS TO BE DRIVEN.

You can learn a lot about a Monte Carlo just by looking at one.

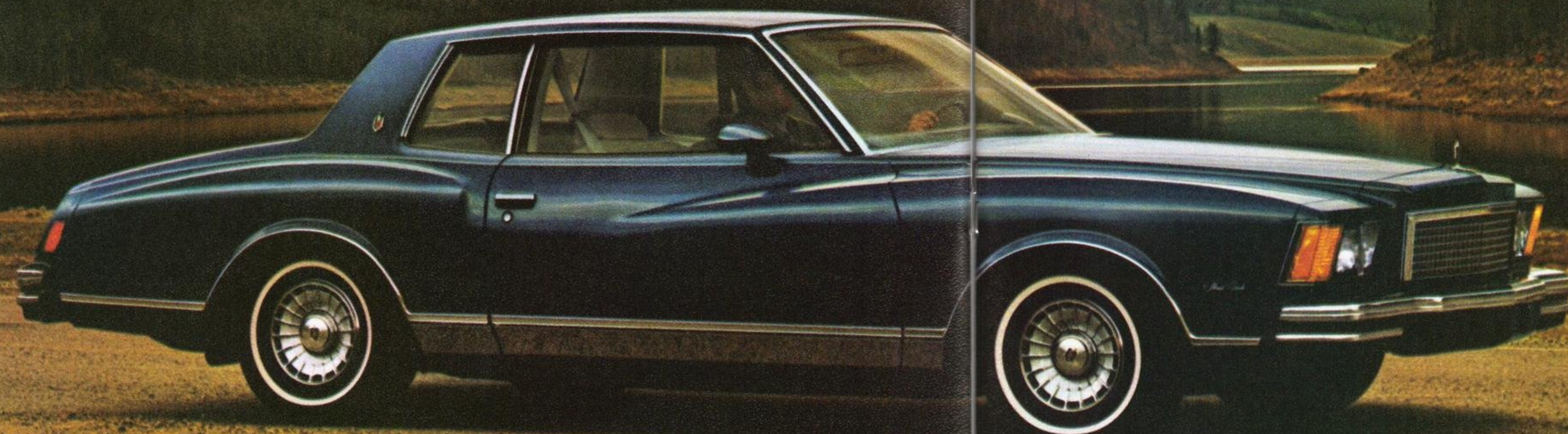
You can learn more by studying this brochure. But you'll never really know this unique automobile until you've spent some time on the road with it.

Monte Carlo has always been, and continues to be, an enormously rewarding car to drive. It has a special road-tuned suspension that includes stabilizers front and rear and radial ply tires to provide a nice feel on straightaways and on curves.

And now, thanks to less overhang and a shorter turning diameter than last year's Monte Carlo, the car becomes easier to manage in cramped quarters, all the more easy to park.

You owe it to yourself to drive a Third Generation Monte Carlo.

It's an experience you won't soon forget.

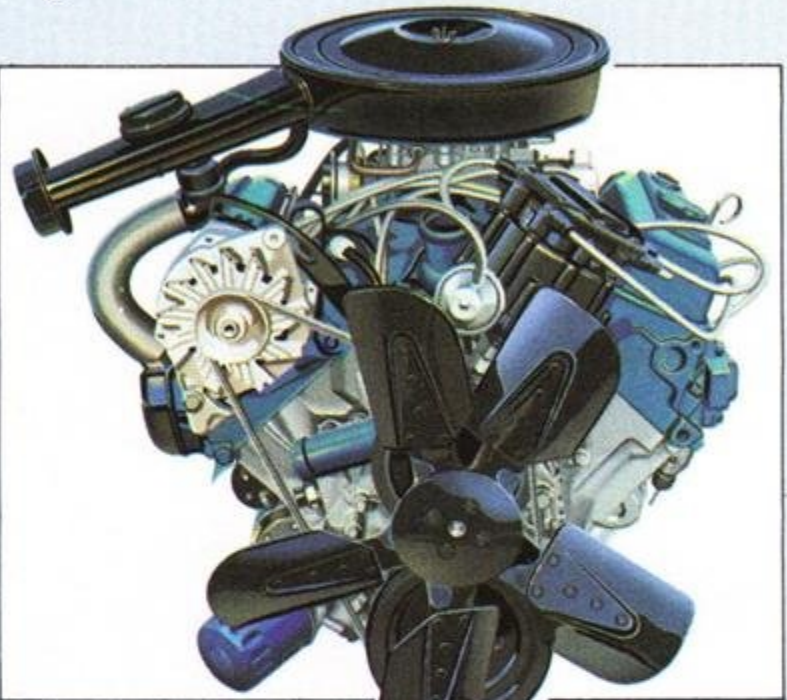




# MONTE CARLO STANDARD FEATURES.

To determine the estimated EPA mileage ratings of these Monte Carlos, please refer to the engine data sheet inserted in this catalog. Additional copies may be obtained from your Chevrolet dealer.

**A WORD ABOUT ENGINES**—The Chevrolets shown in this catalog are equipped with GM-built engines produced by various divisions. Please refer to the engine data sheet inserted in this catalog or available from your dealer for complete details about engine sources and availability.



**New V6, standard.**

A fuel-efficient, new 231 Cu. In. V6 with 3-Speed manual transmission is standard on this year's Monte Carlo. In California, an automatic transmission is required.

**Efficient V6 design.**

The V6 engine design represents a blend of six-cylinder and V8 characteristics. Although the engine block and cylinder

heads are cast iron, the V6 configuration makes this new engine more compact and lighter than last year's standard V8. The result is more horsepower per cubic inch of engine displacement plus impressive fuel economy. And, because it takes up less space in the engine compartment, it's easy to service. This new V6 delivers the balance of performance and economy you need for today's kind of driving.

Monte Carlo Power Teams

ALL STATES EXCEPT CALIFORNIA			Transmissions/Rear Axle Ratios				
Engine Availability							
	Power Rating†	All Models	Manual 3-Speed (STD:)	Manual 4-Speed	Automatic Trans.** Below 4,000 Ft.	Automatic Trans.** 4,000 Ft. and Above	
231 Cu. In. V6	105	STD.	2.93	2.93	2.56	NA	
305 Cu. In. V8	145•	Avail. ▲	NA	2.73	2.29††	2.56	
CALIFORNIA ONLY							
231 Cu. In. V6	105	STD.	NA	NA	2.73	NA	
305 Cu. In. V8	135	Avail. ▲	NA	NA	2.29††	NA	

†S.A.E. net horsepower as installed. \*Standard on Sport Coupe only; not available on Landau.  
\*\*Standard on Landau. ††2.73 Performance Ratio available. ▲ Available at extra cost.  
STD.—Standard. •135 hp with High Altitude Emission Equipment. ♦Not available on Landau.

SPECIAL NOTE: California Emission Equipment required for registration in California. In other states, High Altitude Emission Equipment may be required in areas 4,000 feet or more above sea level.

**1. High Energy Ignition system.**

High output coil in the distributor cap delivers a hotter spark than conventional systems. It helps provide quick starts and all-weather protection from moisture and dirt.

**2. Freedom battery.**

Never needs water. Side terminals resist corrosion.

**3. Steel-belted radials.**

The strength and durability of steel. Help provide longer tread life, less rolling resistance and have good traction on wet and snowy roads.

**4. Front disc brakes.**

Self-adjusting. Fade-resistant. Audible wear sensors tell you when it's time to replace the pads.

**5. Full carpeting.**

New one-piece wall-to-wall carpeting covers even under the seats, does away with dirt-trapping gaps.

**6. More interior room.**

More front and rear-seat head room and leg room than last year.

**7. Dual mode interior ventilation.**

The heater fan forces outside air into the passenger compartment at low speeds. At higher speeds, air is also ram inducted to the interior through lower intake vents.

**Extensive corrosion-resisting treatments.**

The new Monte Carlo is protected by extensive anti-corrosion treatments and features. Special oil-base coatings are added to the frame and lower body. Inner fenders help protect and shield outer surfaces. Galvanized steel is used in wheel housings and trunk floor.

**Long recommended service intervals under normal driving conditions.**

Engine Oil	12 months or 7,500 miles
Oil Filter	First 7,500 miles; every 15,000 miles thereafter
Spark Plugs	Up to 22,500 miles*
Chassis Lubrication	12 months or 7,500 miles
Automatic Transmission Fluid Change	Every 60,000 miles

\*Up to 30,000 miles in California.

**Interior features:**

- New interior styling with color-coordinated, delta-spoked, soft vinyl steering wheel; color-coordinated steering column and padded dash. Instruments and controls are raised in two conveniently accessible pods.
- Molded full-foam seats with woven cloth upholstery and trim in your choice of black, blue, green, camel or carmine; or all-vinyl in blue, camel, carmine or white.

- Electric clock.
- Instrument panel courtesy lights.
- Glove compartment light.
- Ashtray light.
- Day/night rearview mirror.
- "Smart Switch" provides fingertip control for headlight dimmer and turn signal.
- Inertia seat-back release—means you don't have to trigger a release to tilt front seat-back forward.

**Body features:**

- Magic-Mirror acrylic finish in your choice of white, silver, black, light blue, light blue metallic, dark blue metallic, light green metallic, medium green metallic, light camel, camel metallic, dark camel metallic, saffron metallic, carmine metallic and dark carmine metallic.
- Soft fascia body-colored front and rear bumpers with bright-accented impact strips.
- Extensive corrosion-resisting treatments.
- Dual horns.
- Bright wheel opening moldings.
- Bright roof drip moldings.

**Occupant protection features:**

- Seat belts with push-button buckle re-

- leases for all passenger positions • Two front combination seat and inertia reel shoulder belts for driver (with reminder buzzer and light) and right front passenger • Energy-absorbing steering column • Passenger-guard door locks • Safety door latches and stamped steel hinges • Folding seat-back latches • Energy-absorbing instrument panel and front seat-back tops • Contoured windshield header • Thick-laminate windshield • Safety armrests • Safety steering wheel.

**Accident prevention features:**

- Side marker lights and reflectors • Parking lamps that illuminate with headlamps • Backup lights • Four-way hazard warning flasher • Lane-change feature in direction signal control • Windshield defrosters, washers and dual-speed wipers • Wide-view inside mirror (vinyl-edged, shatter-resistant glass and deflecting support) • Dual master cylinder brake system with warning light • Outside rearview mirror • Starter safety switch • Dual-action safety hood latches.

**Anti-theft features:**

- Ignition key reminder buzzer • Steering column lock.

**8. Full Coil suspension.**

Computer selected to match specific model and equipment. Includes front and rear stabilizer bar.

**9. Acoustical headlining.**

Polyfoam sound-deadening material is sandwiched between the fabric and the hardboard backing in this attractive new one-piece "ceiling."

**10. Body by Fisher.**

Beautiful on the outside. Double panel doors and deck lid, box-section roof headers and pillars, heavily ribbed and formed underbody.

**11. Inner fenders.**

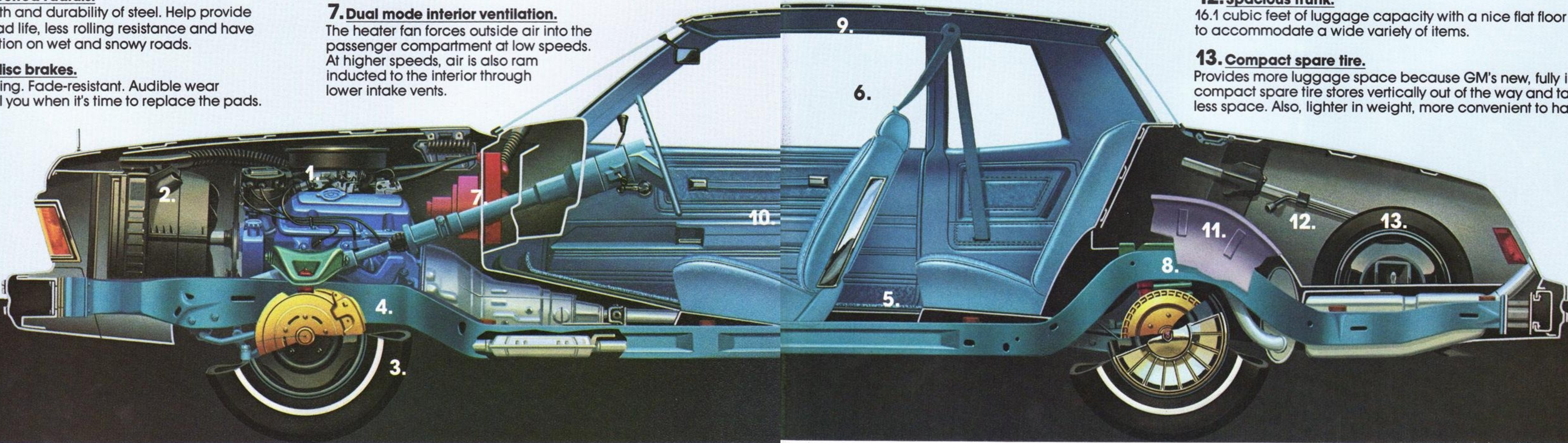
Made of corrosion-resistant plastic. Shield outer surfaces from stones, slush and road salt for added corrosion resistance.

**12. Spacious trunk.**

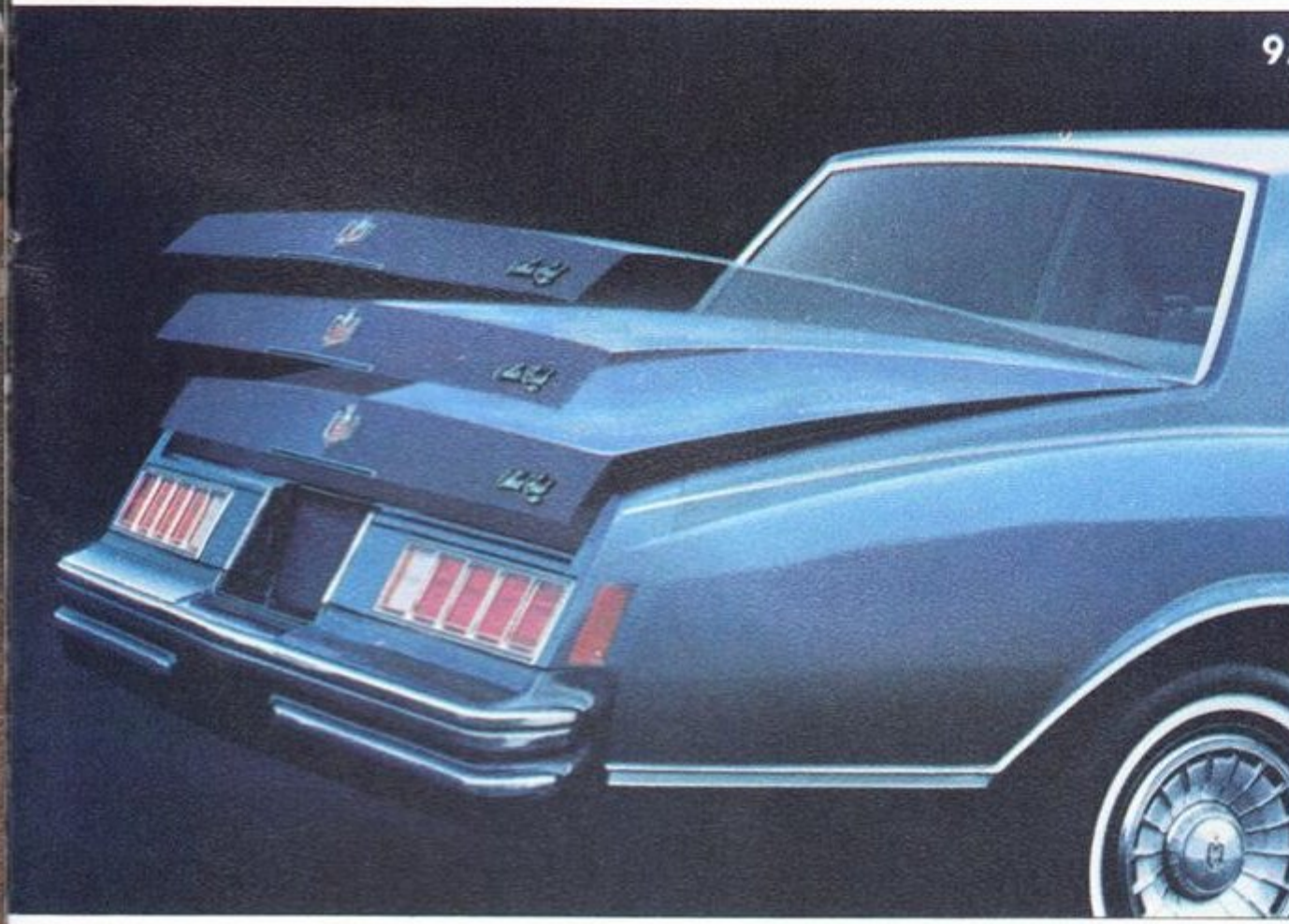
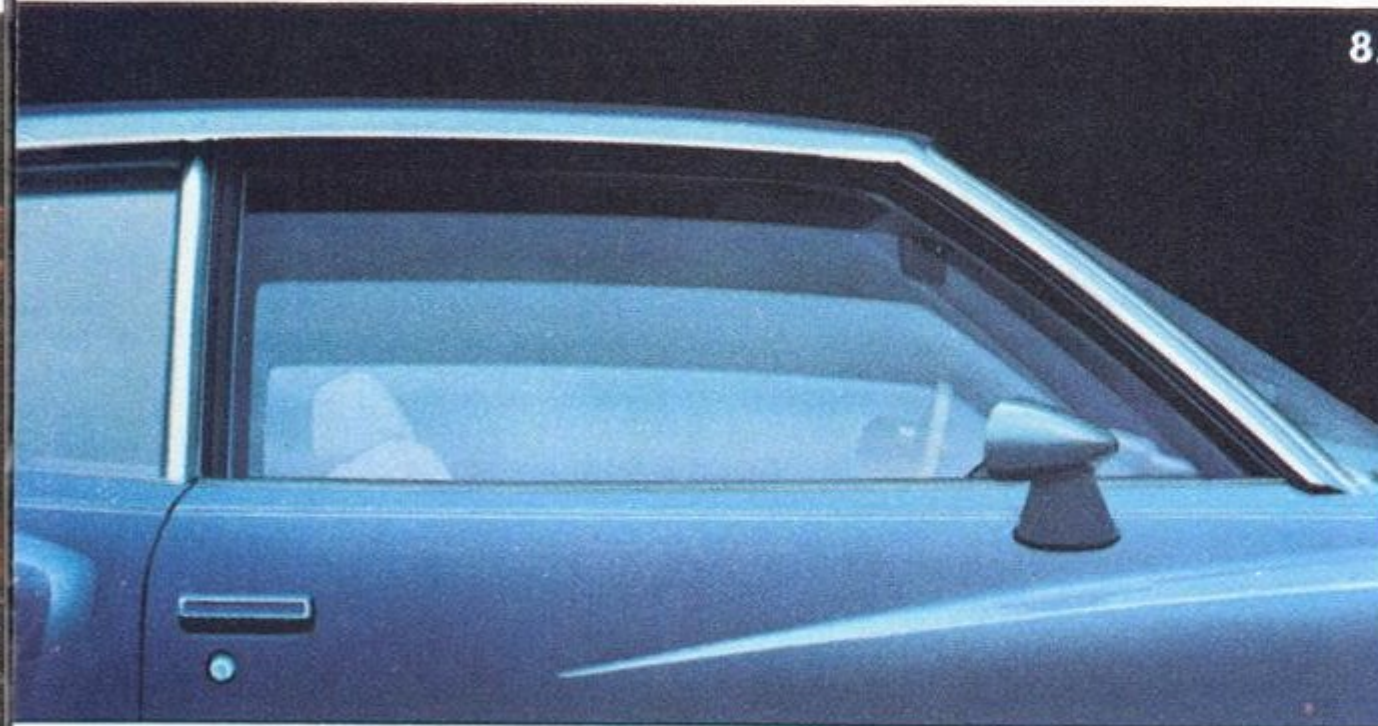
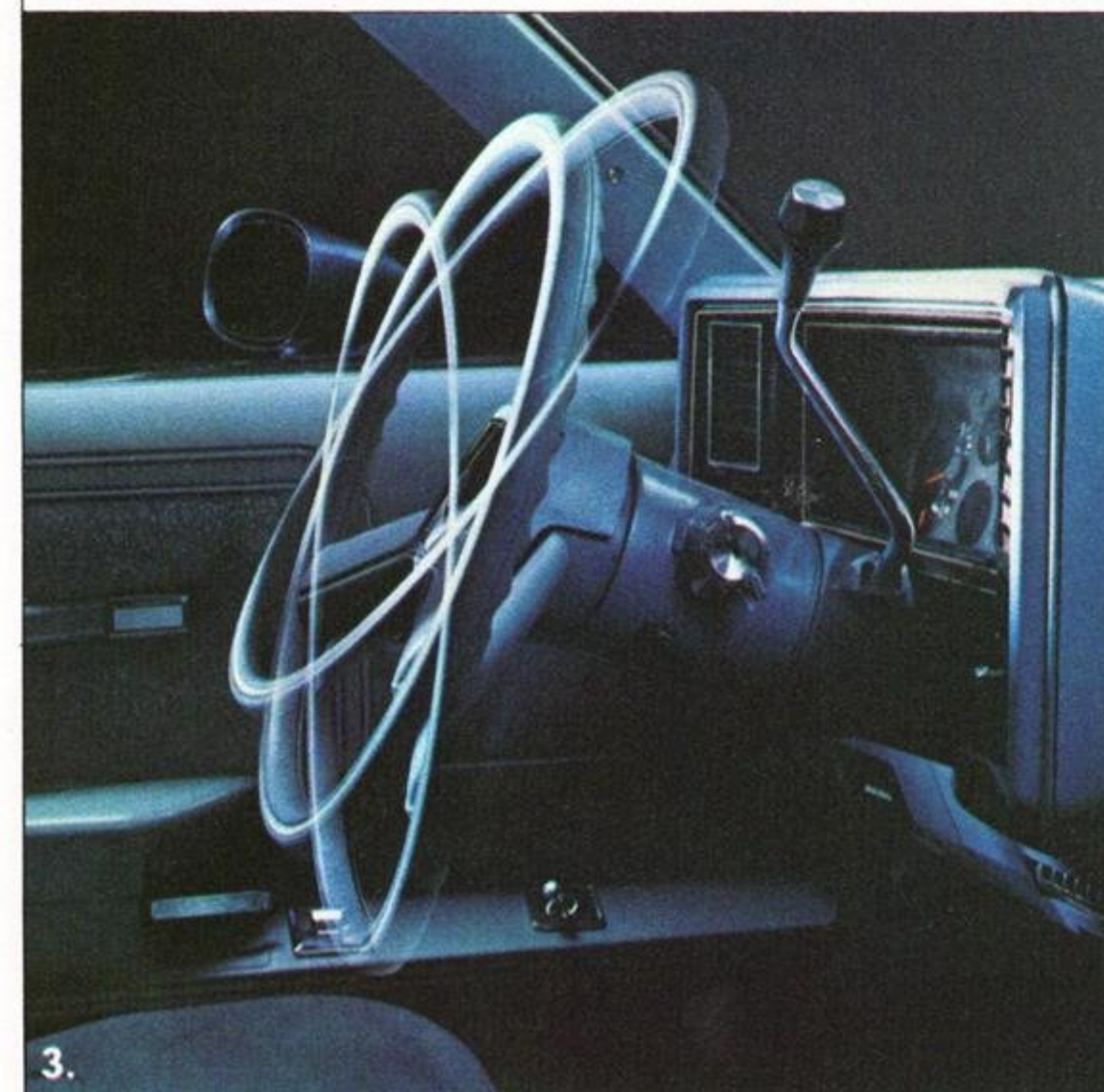
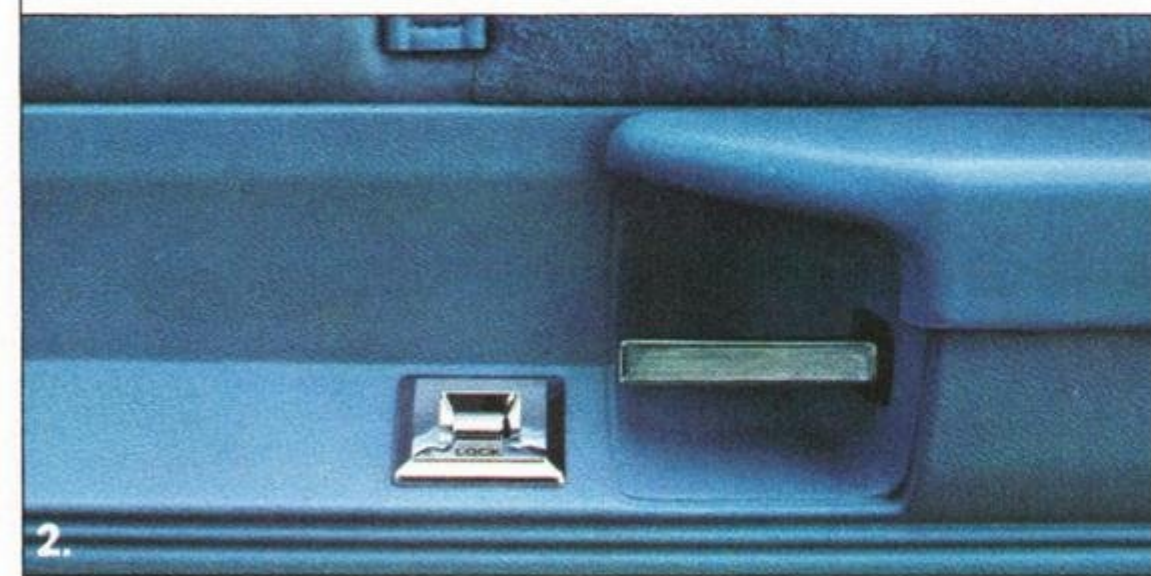
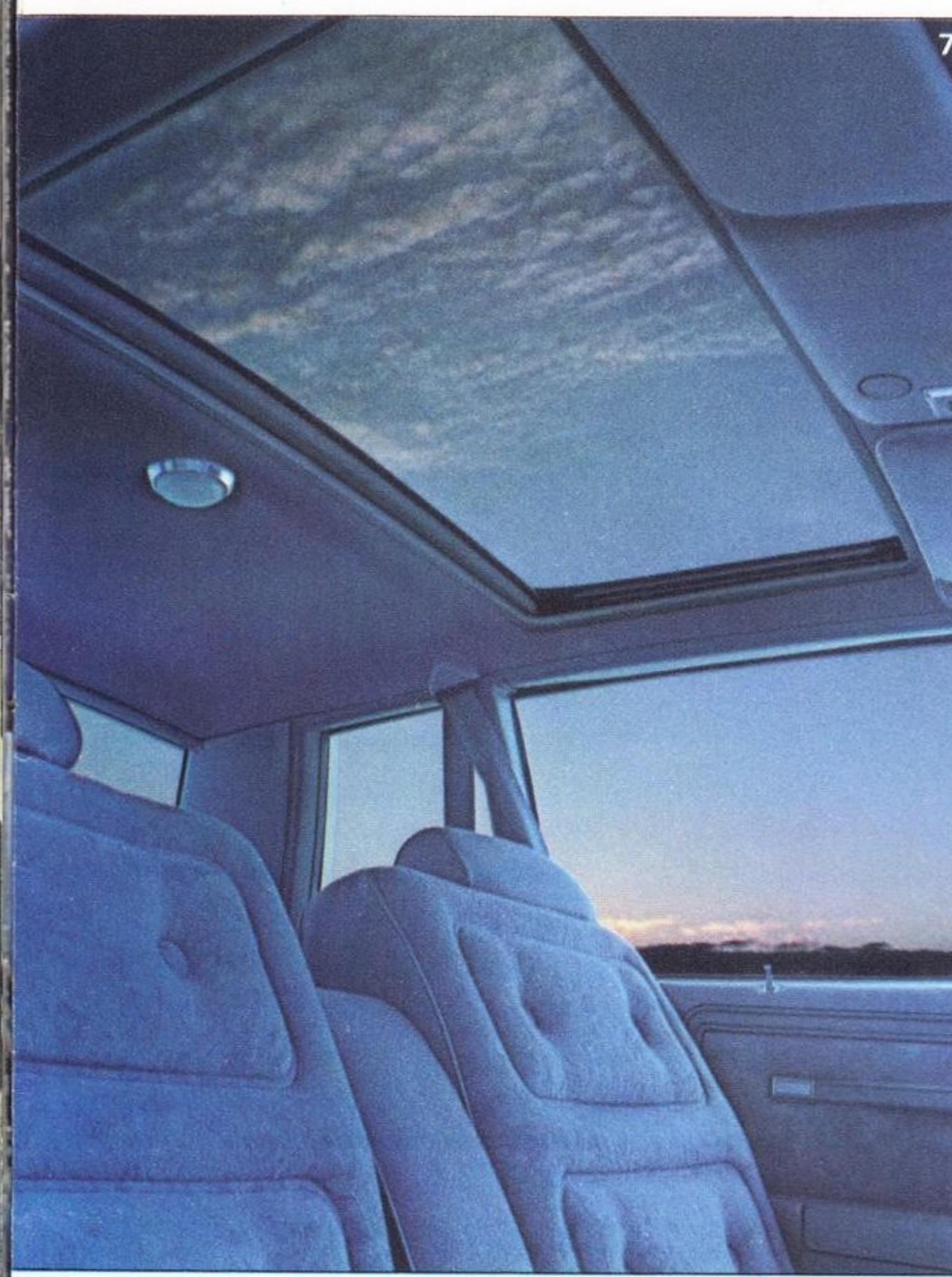
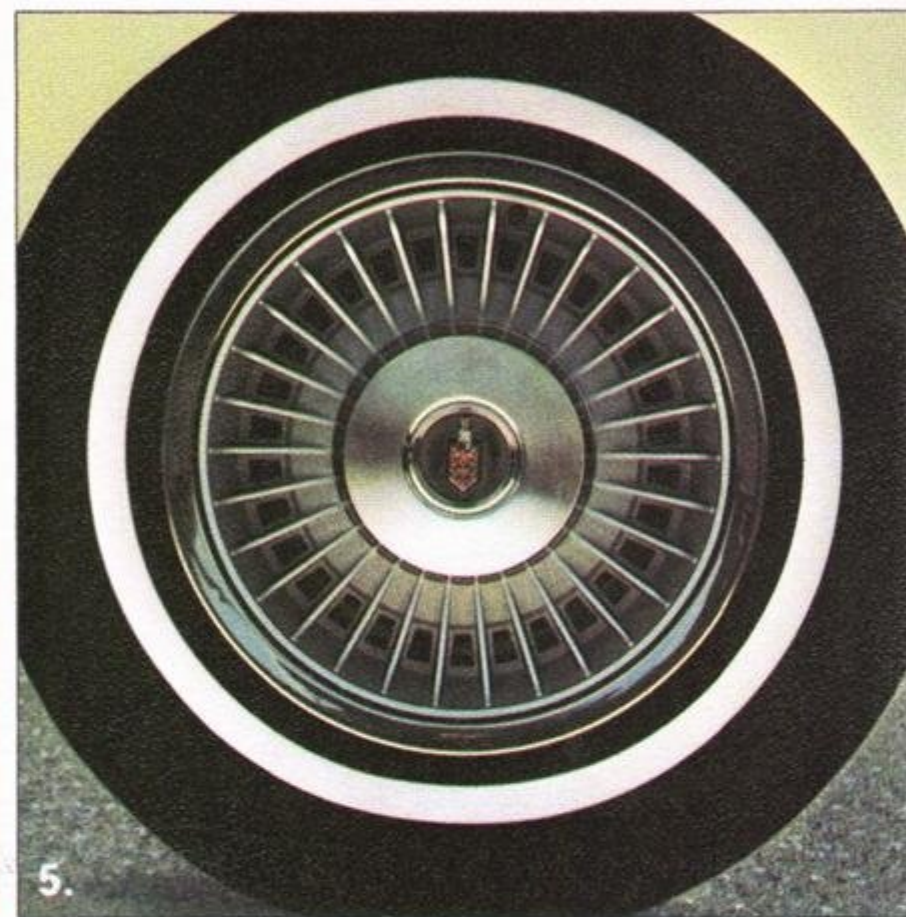
16.1 cubic feet of luggage capacity with a nice flat floor to accommodate a wide variety of items.

**13. Compact spare tire.**

Provides more luggage space because GM's new, fully inflated, compact spare tire stores vertically out of the way and takes up less space. Also, lighter in weight, more convenient to handle.







## ADD A PERSONAL TOUCH.

1. For the interior, start with a choice of standard woven cloth in black, blue, green, camel or carmine (shown). Or, you may choose the available all-vinyl trim in camel, carmine and blue; or white with accents.

Special Custom interiors (see page 6) with 55/45 split bench seat are available in cloth (blue, camel or carmine) or in all-vinyl (camel, carmine, or white with black, blue, green or carmine accents).

2. Power door lock system.

3. Comfortilt steering wheel.

4. Rally wheels, color-keyed (for Sport Coupe only).

5. Wheel cover included with Monte Carlo Landau package described below.

6. Strato-bucket seats. All-vinyl with full-foam, contoured construction.

7. Power Sky Roof (slightly reduces head room).

8. Power windows.

9. Power trunk opener.

### The Monte Carlo Landau.

Includes: Automatic transmission • Power brakes • Power steering • Deluxe wheel covers • Special wide, bright sill moldings • Sport mirrors • Body side pin striping • Elk-grain vinyl roof cover on rear portion of roof • Special white-metalized rear quarter window • Special Landau identification.

### Comfort and convenience:

• Four-Season air conditioning • Power seat • Delco-GM sound systems. Choose from AM radio, AM/FM radio, AM/FM stereo radio, and an eight-track stereo tape system with either AM or

AM/FM stereo radios. Windshield antenna included with factory-installed radios • Power radio antenna • Rear seat speaker. Available with AM and AM/FM radios only • Power steering • Power brakes • Intermittent windshield wiper system • Cruise-Master speed control (available with automatic transmission only) • Special Instrumentation • Front seat center console. Available with bucket seats only • Auxiliary lighting.

### Appearance:

• Removable tinted-glass roof panels (slightly reduces head room) • Deluxe color-keyed seat and shoulder belts. (Included with Special Custom interior) • Deluxe luggage compartment trim • Deluxe body side moldings with color-keyed vinyl insert • Door edge guards • Wide lower body side moldings. (Standard on Landau) • Vinyl roof coverings in Black, Blue, Green, White, Camel, Carmine or Silver • Color-keyed body side pin striping (Standard on Landau) • White stripe steel-belted radial ply P205/70R-14B tires • Wire wheel covers.

### Mechanical:

• Positraction rear axle • Heavy-duty battery • 61-amp Delco-tron generator. (Included with air conditioning or Electro-Clear rear window defogger) • Heavy-duty radiator. (Included with air conditioning) • Heavy-duty suspension • 4-Speed manual transmission (Except Landau).

### A word about the components and optional equipment in these Chevrolets.

—The Chevrolets described in this brochure incorporate thousands of different components produced by various divisions of General Motors and by various suppliers to Chevrolet. From time to time during the manufacturing process it may be necessary in order to meet public demand for particular vehicles or equipment, or to meet federally mandated emissions, safety and fuel economy requirements, or for other reasons, to produce Chevrolet products with different components or differently sourced components than initially scheduled. All such components have been approved for use in Chevrolet products by Chevrolet Motor Division and will provide the quality performance associated with the Chevrolet name. With respect to extra cost optional equipment, make certain you specify the type of equipment you desire on your vehicle when ordering it from your dealer. Before taking delivery of the vehicle, we suggest you verify that it includes the optional equipment that you ordered or if there are changes, they are acceptable to you.



# CHEVROLET MONTE CARLO. THERE'S NO OTHER CAR QUITE LIKE IT.



Monte Carlo Sport Coupe with removable glass roof panels.



Monte Carlo Landau Coupe.

## Reasons to buy Monte Carlo.

- Traditional Monte Carlo styling with elegant grille, sculptured sides and formal roof.
- Luxurious plush interiors.
- Personal luxury at an affordable price.
- Road-tuned suspension with standard front and rear stabilizer bars and standard steel-belted radial tires.
- Full frame construction.
- More interior leg and head room both front and rear.\*
- More usable trunk room.\*
- 14 noise isolating body mounts, one-piece headliner contribute to a quiet ride.
- Reduced turning circle makes it easier to park and more maneuverable in city traffic.\*
- Thrifty V6 engine standard and 305 Cu. In. V8 available.

\*All comparisons relate to the 1977 Monte Carlo.



All illustrations and specifications contained in this catalog are based on the latest product information available at the time of publication approval. The right is reserved to make changes at any time without notice in prices, colors, materials, equipment, specifications and models, and to discontinue models. Chevrolet Motor Division, General Motors Corporation, Detroit, Michigan 48202.

