

THE NEW CHEVROLET

Chevrolet



1980 CAPRICE, IMPALA AND BEL AIR

THE NEW CHEVROLET FOR 1980.

Current ideas about fuel economy have helped reshape The New Chevrolet Caprice Classic, Impala and Bel Air to meet the demands of today's driving. A new standard V6 engine is more efficient, tires offer less rolling resistance to the road, the entire surface of the car has been redesigned to slip through the air more easily, compared to the 1979 Chevrolet. The result: a significant increase in fuel economy based upon Transport Canada approved test methods, without sacrificing the ride, room, comfort and value you've come to expect from Canada's favourite full-size car.

TECHNOLOGY.

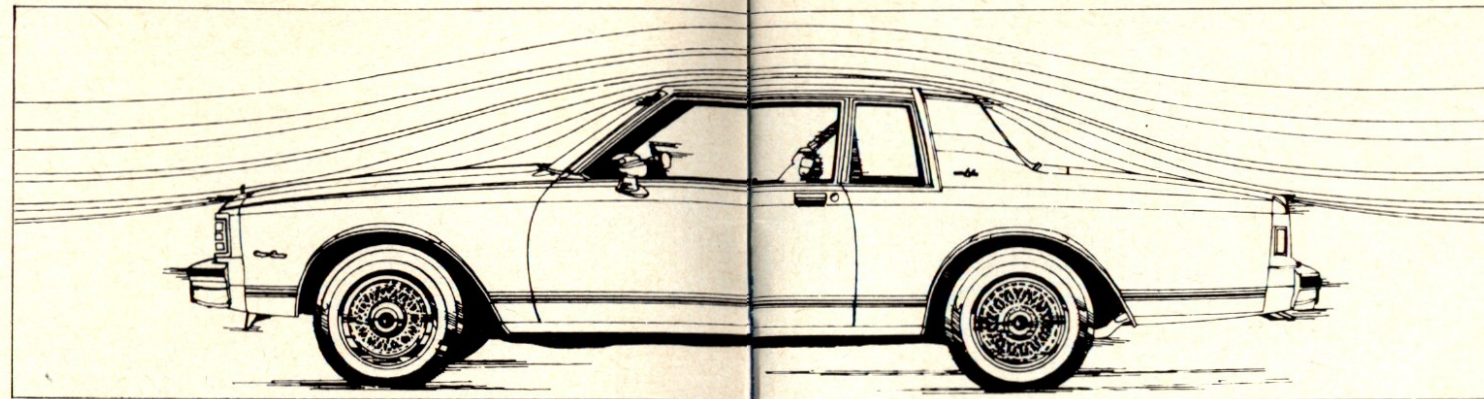
An entirely new power lineup embodies the latest in General Motors engine design. The brand-new standard V6 helps account for this year's higher Transport Canada fuel economy estimate (tests based upon Transport Canada approved test methods). A 4.4 litre V8 engine is available for those wanting extra power and good performance. And a new diesel engine is available for the first time for Caprice, Impala and Bel Air wagons.

NEW LONGER DRIVING RANGE.

A new 20.8-gallon fuel tank for coupes and sedans, along with the new V6 engine's improved fuel rating, enables The New Chevrolet to go a lot farther on a tankful of gas.

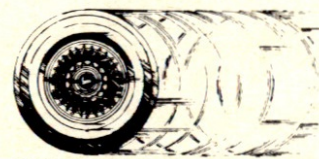
AT GENERAL MOTORS, WE'RE COMMITTED TO LEADERSHIP IN FUEL EFFICIENCY.

Your Chevrolet Dealer has fuel consumption/economy estimates based upon Transport Canada approved test methods which are available for your review.



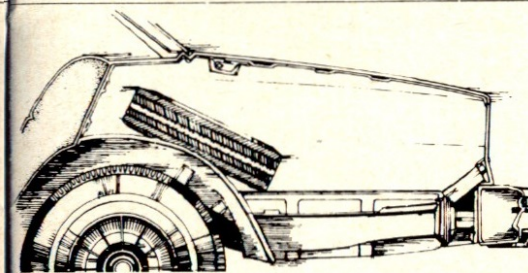
NEW AERODYNAMIC DESIGN.

Virtually every square inch of body sheet metal has been reshaped for 1980 to let The New Chevrolet glide through the air with less drag. The hood is lower. The rear deck higher. The sides restyled. And the entire car has been made over 100 lbs. lighter to help reduce the weight the engine has to carry.



NEW EASY-ROLLING TIRES.

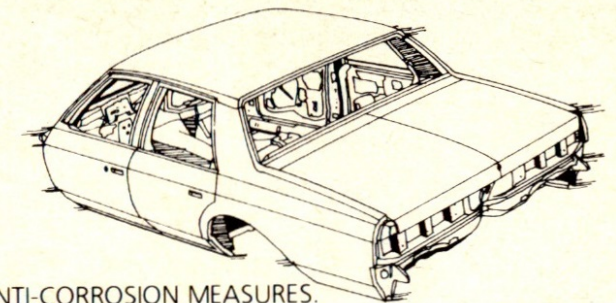
New larger size steel-belted radial ply tires with a new tread design grip the road, yet offer less rolling resistance than last year's tires. That means the car rolls more freely and requires less gas-consuming effort from the engine.



MORE TRUNK SPACE, MORE NEW FEATURES.

We made an already big trunk bigger with over one cubic foot of added capacity, an advantage you'll appreciate on your next family trip. We also gave it a new jack that allows you to lift the car from the side instead of the bumper. And a compact spare tire that's easier to handle and takes up less room in the trunk than last year's standard spare.

And that's only a partial list of new features.



NEW ANTI-CORROSION MEASURES.

We've increased anti-corrosion treatments this year. Precoated metals are used more extensively, special coatings in body cavities and on brake and fuel lines have been added. Plus a lot more you can read about on the pages that follow.

SAME FULL-SIZE ROOM.

But with all that's new, The New Chevrolet continues to be what so many people prefer. A car that's a pleasure to drive. A car with room and comfort for six full-size people. Full of deep-down value. All at a Chevrolet price.

It's a lot of car, Canada. The New Chevrolet for 1980.

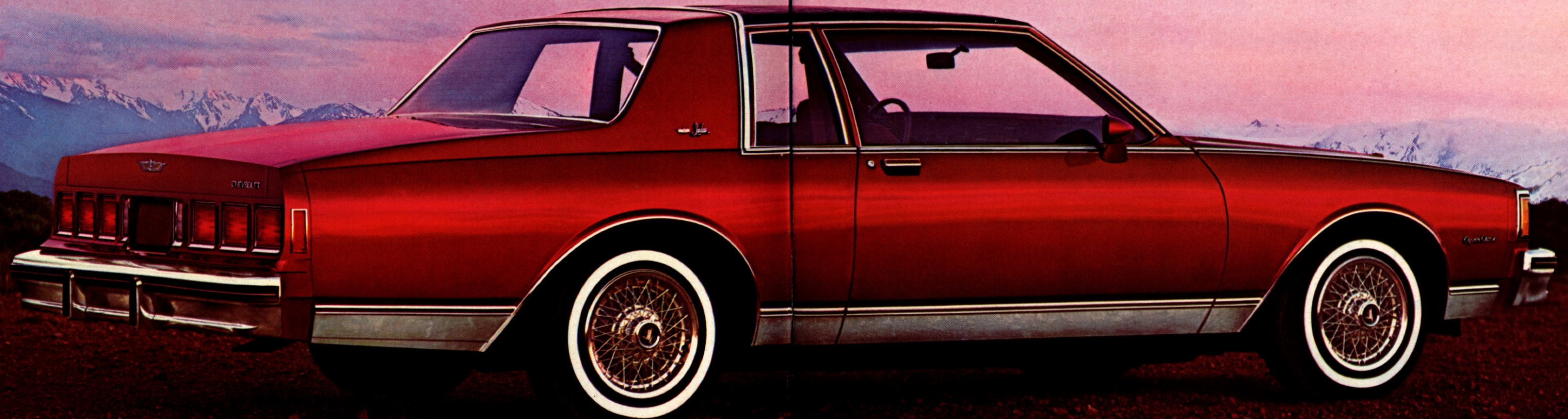
A WORD ABOUT THIS CATALOGUE:

We have tried to make this catalogue as comprehensive and factual as possible. And we hope you find it helpful. However, since the time of printing, some of the information you'll find here may have been updated. Also, some of the equipment shown or described throughout this catalogue is available at extra cost. Your dealer has details and, before ordering, you should ask him to bring you up to date.

The right is reserved to make changes at any time, without notice, in prices, colours, materials, equipment, specifications and models, and to discontinue models. Check with your Chevrolet dealer for complete information.

On cover: Caprice Classic Sedan shown in available Custom Two-Tone light camel metallic and beige with available tinted glass, bumper rub strips and guards, wire wheel covers and white-stripe tires.

Caprice Classic Landau Coupe shown in claret metallic with available tinted glass, bumper rub strips and guards and white-stripe tires.



IMPALA MODELS.

A lot has happened to Impala for 1980. It's changed for the better in many big and small ways while keeping pace with the demands for efficiency.

But we've made sure this full-size family car continues to be a fine value, at what we think is an affordable price. Which, of course, is why Canadians have been flocking to it for

lo these many years.

This year, to heighten Impala's eye appeal and lower its wind resistance, we've reshaped the exterior, then added a handsomely symmetrical new grille. To further dramatize the sophisticated roof line, a new vinyl top may be added that wraps up to the rear window and gives a rich padded look.

From a practical standpoint, there's a new side-lift jack that raises the frame, not the bumper, for greater convenience. And a new, easy-to-handle compact spare tire which, incidentally, partially accounts for an increase in the trunk's capacity to 21.3 cubic feet.

We've also stepped up anti-corrosion measures and improved door locks compared to last year.

Yet with all that's new, Impala doesn't forget those things which made it famous.

Ample room for six people—all adults, even—in an atmosphere of good taste, great comfort and wel-

come quiet. A trim, contemporary size that makes it utterly drivable and parkable.

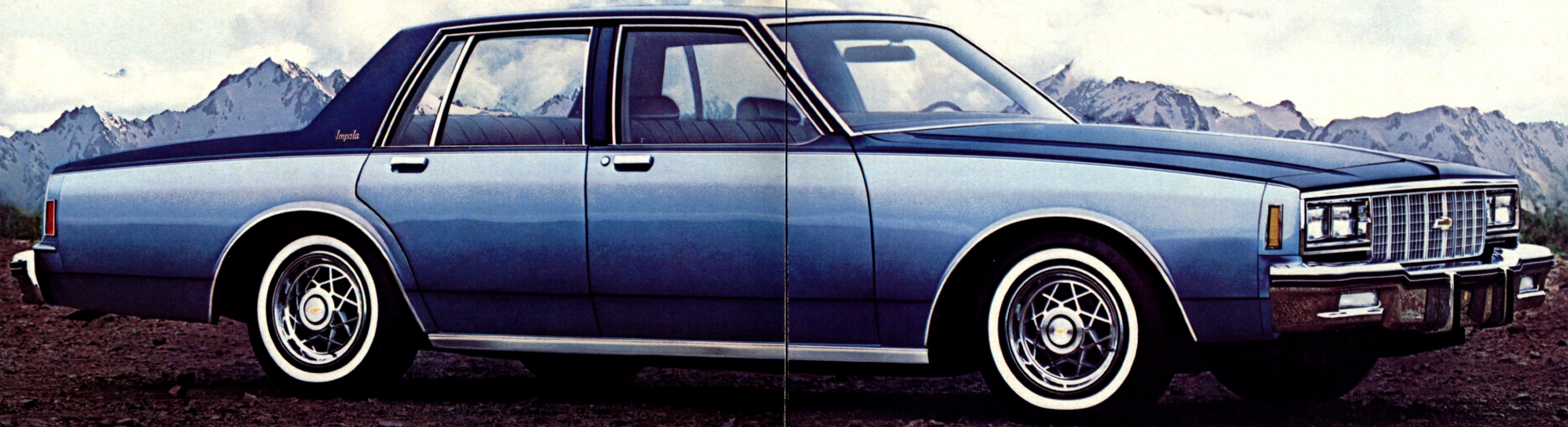
Standard features such as an electric rear window defogger, power steering, power front disc brakes and automatic transmission that enhance the ease of driving. And such niceties as armrests, colour-keyed carpeting,

centre dome light, glove and luggage compartment lights, cigarette lighter and inside hood release.

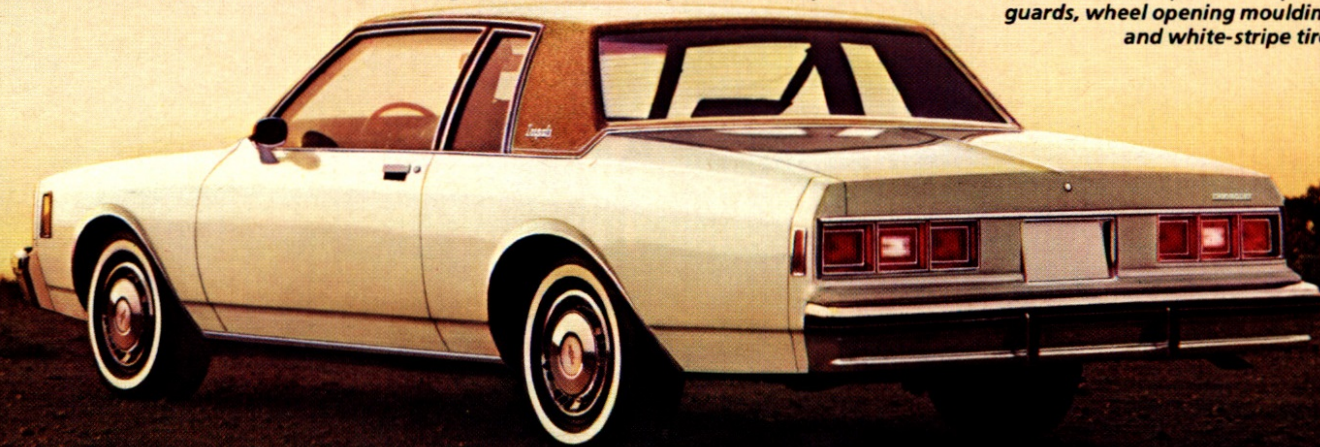
The 1980 Chevrolet Impala. It's a change for the better that your family will surely welcome.

In sedan, coupe, or in 2- or 3-seat station wagons.

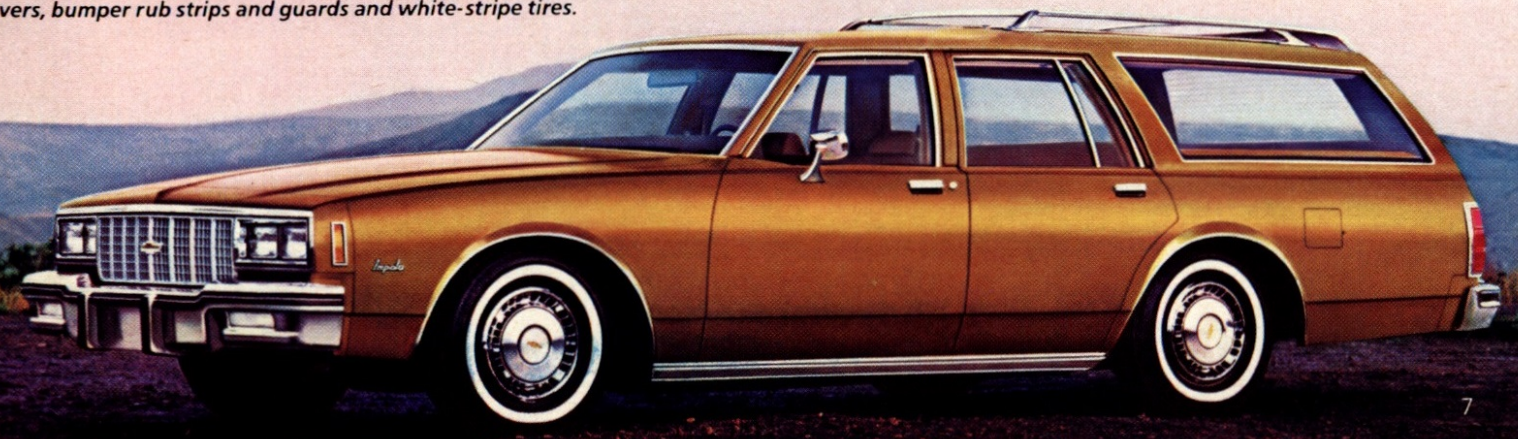
Impala Sedan shown in available Custom Two-Tone dark blue metallic and light blue metallic with available custom wheel covers, bumper rub strips and guards, wheel opening mouldings and white-stripe tires.



Impala Sport Coupe shown in white with available light camel metallic vinyl roof cover, Sport mirrors, full wheel covers, bumper rub strips and guards, wheel opening mouldings and white-stripe tires.

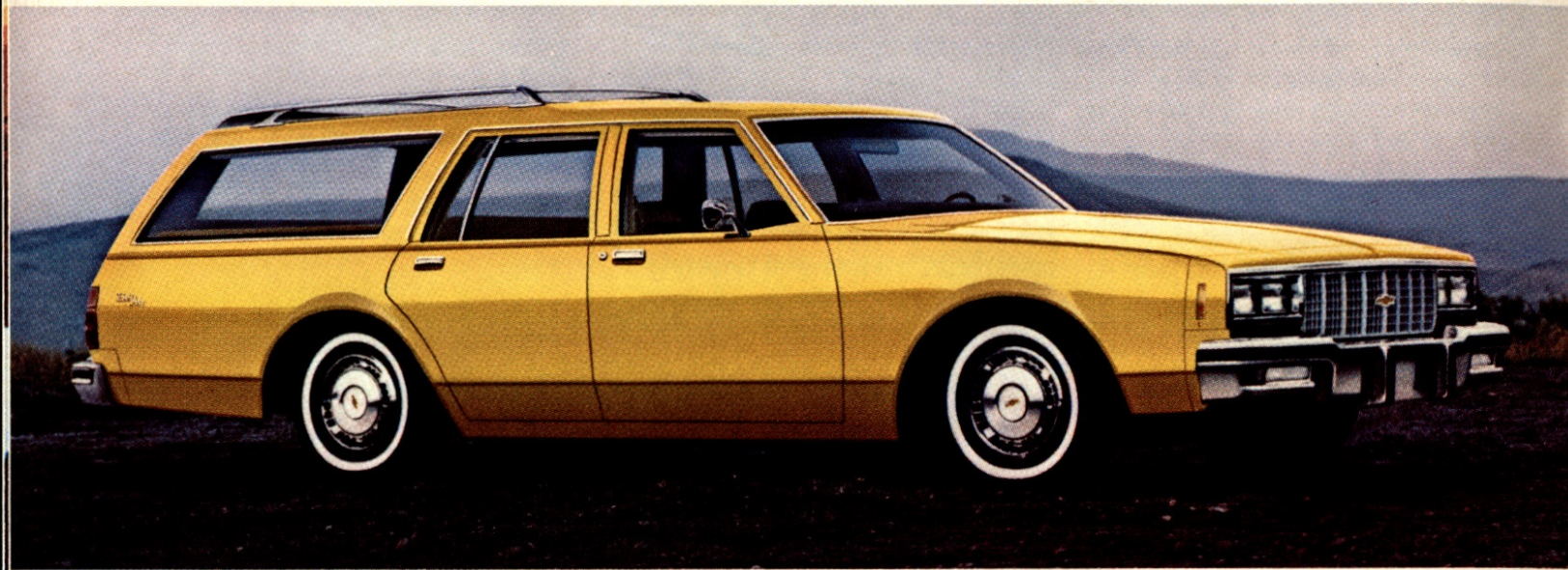


Impala Station Wagon shown in light camel metallic with available roof carrier, tinted glass, remote control outside rearview mirror, full wheel covers, bumper rub strips and guards and white-stripe tires.

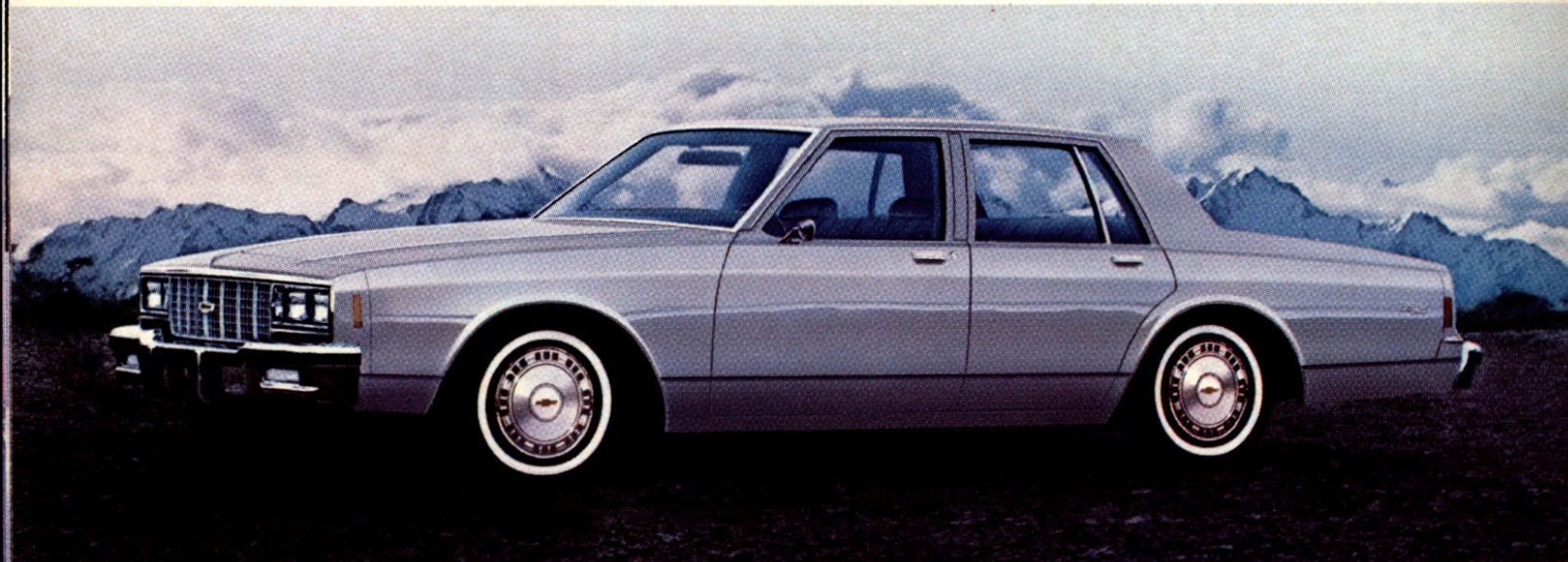


BEL AIR MAKES THE MOST OF CHEVROLET'S GREAT VALUES AT A PRICE WE BELIEVE IS MOST AFFORDABLE.

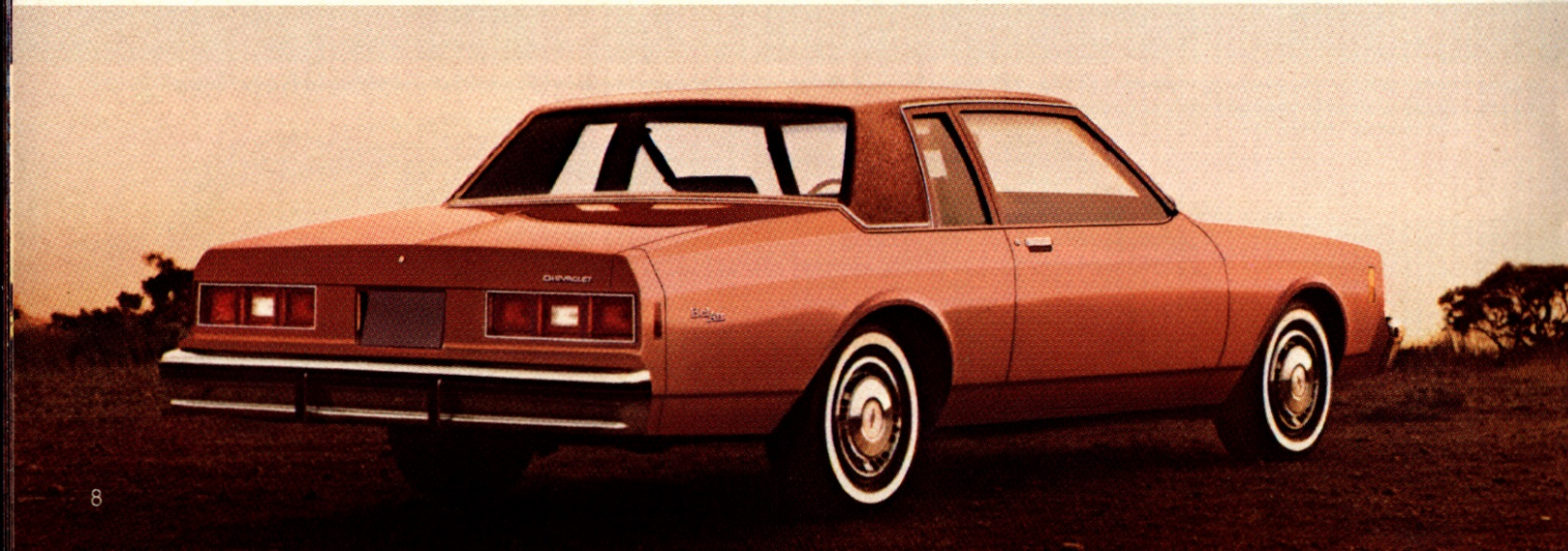
Bel Air Station Wagon shown in yellow with available roof carrier, tinted glass, remote control outside rearview mirrors, full wheel covers, bumper rub strips and guards, and white-stripe tires.



Bel Air Sedan shown in silver metallic with available full wheel covers, bumper rub strips and guards, and white-stripe tires.



Bel Air Coupe shown in medium camel metallic with available light camel metallic vinyl roof, full wheel covers, bumper rub strips and guards, and white-stripe tires.



A QUIET, LUXURIOUS PLACE WITH THE ROOM YOU WANT, THE COMFORT YOU DEMAND.

Caprice Classic with available Special Custom interior shown in camel with special Custom cloth, 50/50 split front seat, centre armrest and reclining passenger seat back. Also shown are available power windows and power door locks.



STANDARD FEATURES

1. Power front disc/rear drum brake system. A self-adjusting system. Fade-resistant front disc brakes have audible wear sensors to let you know when to replace pads.

2. Automatic transmission. Moves you smoothly through three forward speeds.

3. Flow-through ventilation. Outside intake ducts provide continual flow of new air inside the car. Air exits through hidden outlets in door pillars.

4. Column-mounted lever for turn signal and headlight dimmer. Puts headlight dimmer at your fingertips, right there on the turn signal lever.

5. Power steering. Helps make parking and manoeuvring in city traffic easy.

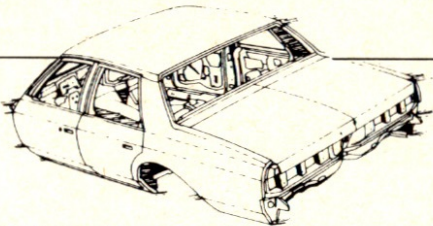
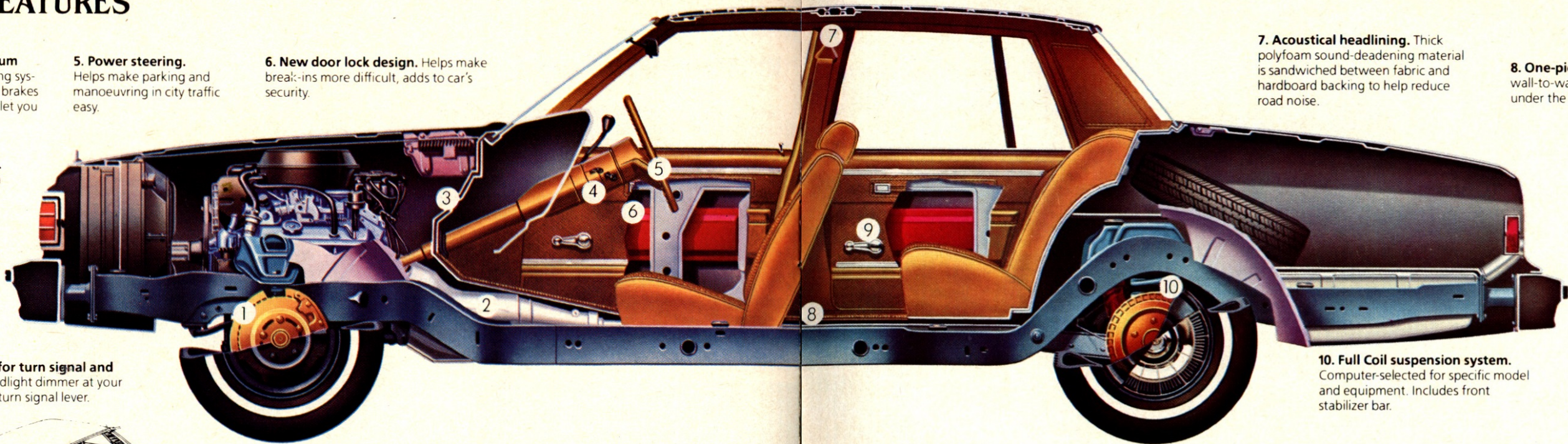
6. New door lock design. Helps make break-ins more difficult, adds to car's security.

7. Acoustical headlining. Thick polyfoam sound-deadening material is sandwiched between fabric and hardboard backing to help reduce road noise.

8. One-piece carpeting. One-piece wall-to-wall carpeting covers even under the front seats.

9. Improved window operation. New tape drive mechanism requires fewer turns to roll window up or down.

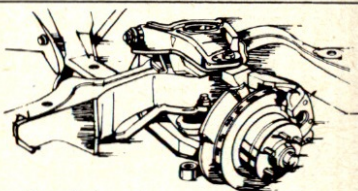
10. Full Coil suspension system. Computer-selected for specific model and equipment. Includes front stabilizer bar.



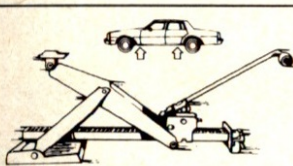
Improved anti-corrosion measures. Include new wax coating in body cavities and on front fenders; new body-coloured, chip-resistant vinyl coating on lower body surfaces; new organic zinc coating on fuel and brake lines; improved, more open fender design allowing better coverage for the dip priming process; added use of zinc-rich metal; plus special vinyl coating to help protect fenders against stone damage.



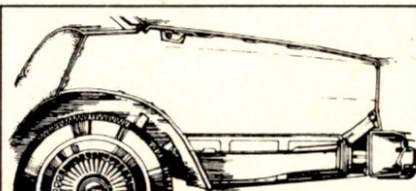
New Easy-Roll tires. GM Specification steel-belted radial ply tires are larger, carry more pressure and use advanced tread compounding compared to last year's tire. Provide 15% less rolling resistance to help improve fuel economy.



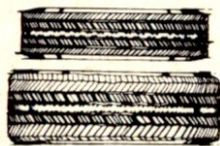
Refined chassis components. Innovations aimed at maintaining The New Chevrolet's impressive ride include new shock absorbers, lower friction ball joints and larger front suspension bushings.



New side-lift frame jack. Chevy's latest thinking in jack design that lifts by the frame, not bumper. Compact size, hand or foot operated.



Added usable trunk space. New compact spare tire, new side-lift jack and new slightly raised rear quarter panel styling increase luggage space 1.5 cubic feet for coupes, 1.1 cubic feet for sedans.



New compact spare tire. Easier to handle, lighter in weight than conventional tire.

MORE STANDARDS.

Delcotron generator with built-in solid-state voltage regulator • Catalytic converter • Coolant recovery system to help prevent loss of coolant • Colour-keyed seat and shoulder belt system (except Bel Air) • Disc brake audible wear sensors • Foot-operated parking brake • Cigarette lighter • Finned rear brake drums • Built-in heater/defroster system • 20.8 gallon (94l) fuel tank • Sturdy all-welded perimeter frame • Luggage compartment light.

FOR EASY SERVICEABILITY

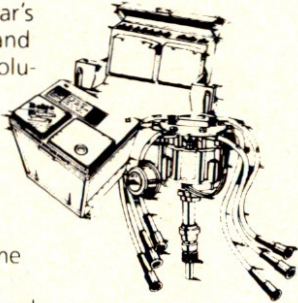
Built-in engine electrical diagnostic connector. Simplifies engine electrical tests. When plugged into analyzer, 35 electrical tests and checks can be made quickly, accurately. Also analyzes car's starting supply voltage, charging and battery systems. Results in faster solutions to engine electrical problems.

High Energy Ignition.

A solid-state system that eliminates points and ignition condenser, yet delivers a high voltage spark that helps extend time between recommended tune-ups.

Delco Freedom battery. Never needs refilling. Sealed side terminals help resist corrosion.

New removable taillight rear end panel. Allows easier bulb replacement for improved serviceability.



LONG RECOMMENDED SERVICE INTERVALS

(Based on normal driving conditions)

Engine Oil 12 months or 12,000 kilometres (7,500 miles)

Oil Filter . . 12 months or 12,000 kilometres (7,500 miles) every 24,000 kilometres (15,000 miles) thereafter

Spark Plugs Up to 48,000 kilometres (30,000 miles)

Chassis Lubrication 12 months or 12,000 kilometres (7,500 miles)

Automatic Transmission Fluid Change Every 160,000 kilometres (100,000 miles)

A WORD ABOUT ENGINES.

The Chevrolets shown in this catalogue are equipped with GM-built engines produced by various divisions. Please refer to the Chevrolet Power Teams Chart shown and see your dealer for details.

ENGINE SELECTIONS.

For 1980 The New Chevrolet offers a totally new powertrain lineup including a brand-new, fuel efficient standard 3.8 Litre V6, an economy-minded 4.4 Litre V8, and a first for Chevrolet—a new 5.7 Litre diesel V8 for wagons.

3.8 LITRE V6 ENGINE.

This new 229-cubic-inch engine provides improved fuel economy based upon Transport Canada approved test methods compared to last year's 4.1 Litre L6, yet occupies less space in the engine compartment for convenience of serviceability, weighs less and provides a comparable power rating. The new V6 is short and compact with cylinders banked three to a side. It has a cast-iron engine block and crankshaft, plus Dualjet carburetor. Compression ratio, as well

as the cylinder diameters and inlet and exhaust valves, is identical to those of the 5.0 Litre V8.

4.4 LITRE V8.

This available V8 with cast-iron cylinder block includes short-stroke valve-in-head design and Dualjet carburetor which help provide good engine performance at all speed ranges.

5.0 LITRE V8.

An available engine that features short-stroke valve-in-head design and is equipped with a 4-barrel carburetor for increased power output, which helps provide good engine performance at all speed ranges.

5.7 LITRE DIESEL V8.

New for '80, this first diesel engine in Chevrolet wagons has cast-iron construction, yet is lightweight. Gives good acceleration due to one of the highest power-to-weight ratios among today's diesel cars. No spark plugs, distributor or carburetor to service or replace. Meets current emission standards without a catalytic converter. Available for wagons only.

CHEVROLET POWER TEAMS

Engine	V.I.N. Engine Ordering Code+ Code		Displacement (cubic inches)	Engine Availability		
				Sedans and Coupes	Station Wagons	Automatic Transmission
3.8 Litre 2-Bbl. V6	K	LC3	229	Std.	NA	Std.
4.4 Litre 2-Bbl. V8	J	L39	267	EC	Std.	Std.
5.0 Litre 4-Bbl. V8	H	LG4	305	EC	EC	Std.
5.7 Litre Diesel V8	N	LF9	350	NA	EC	Std.

Std. — Standard. NA — Not Available. EC — Available at Extra Cost.

+V.I.N. (Vehicle Identification Number) Engine Code is the fifth digit from the left on the vehicle serial number plate. The vehicle serial number plate is located on the top portion of the driver's side of the instrument panel and can be viewed from the exterior of the car by looking through the windshield.

(K/J) Produced by GM—Chevrolet Motor Division at the Flint, Michigan Engine Plant
(H) Produced by GM—Chevrolet Motor Division at the Tonawanda, New York, Flint, Michigan and by GM of Canada, St. Catharines, Ontario Engine Plants.
(N) Produced by GM—Oldsmobile Motor Division at the Lansing, Michigan Engine Plant.

SAFETY FEATURES.

Occupant Protection.

Seat belts with push-button buckles for all passenger positions • Two front combination seat and inertia reel shoulder belts for driver (with reminder light and buzzer) and right front passenger • Energy-absorbing steering column • Passenger guard door locks • Safety door latches and stamped steel hinges • Folding seat back latches •

Energy-absorbing padded instrument panel and front seat back tops • Laminated windshield • Safety armrests.

Accident Avoidance.

Side marker lights and reflectors • Parking lamps that illuminate with headlamps • Fourway hazard warning flasher • Backup lights • Lane change feature in direction signal control • Windshield defrosters,

washer and dual-speed wipers • Wideview inside mirror (vinyl-edged, shatter-resistant glass and deflecting support) • Outside rearview mirror • Dual master cylinder brake system with warning light • Starter safety switch • Dual-action safety hood latch.

Anti-theft.

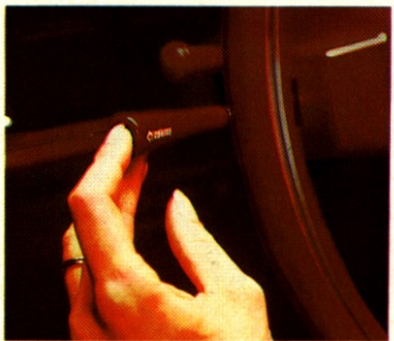
Anti-theft ignition key reminder buzzer • Anti-theft steering column lock.



INTERMITTENT WINDSHIELD WIPER SYSTEM. Varies the wiper cycle to adjust for heavy downpour or light mist.



COMFORTILT STEERING WHEEL. Adjusts to six positions for most comfortable driving angle and for easier entry and exiting.

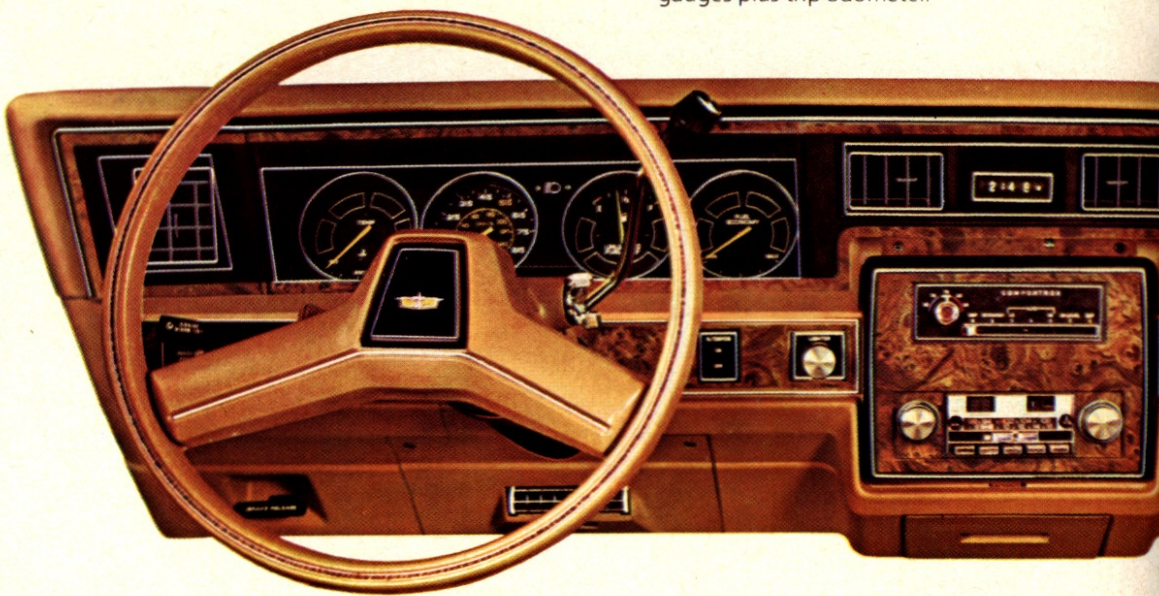


AUTOMATIC SPEED CONTROL. Located on turn signal, automatically maintains a constant speed for added driving ease during long stretches. A touch of the brake deactivates control.

CUSTOM TWO-TONE COLOURS. Create a dramatic effect; available in 10 different colour combinations.

POWER TRUNK OPENER. Touch the release button located inside the glove box and the trunk lid opens.

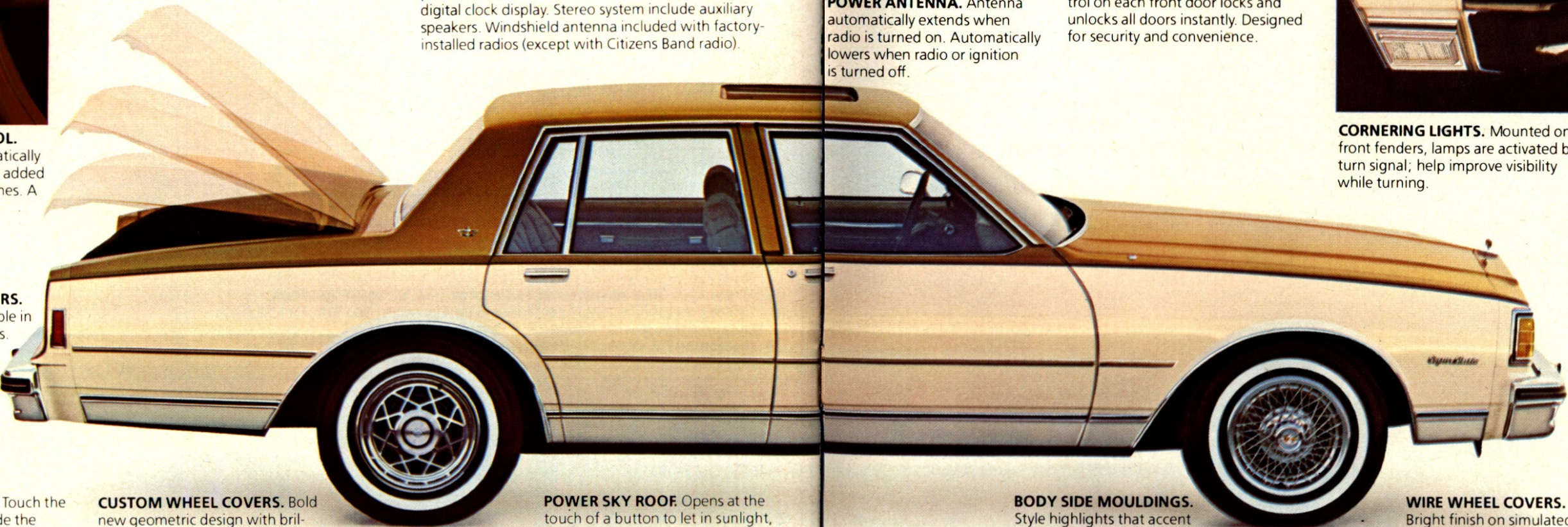
AVAILABLE OPTIONS.



GAUGE PACKAGE. Helpful trio of instruments that includes temperature and fuel economy gauges plus trip odometer.

COMFORTRON AIR CONDITIONING. Dial desired temperature and Comfortron automatically maintains that temperature through winter and summer. Manual control air conditioning also available.

SOUND SYSTEMS. Produced to General Motors quality standards. Choose from AM radios with or without stereo tape system, AM/FM radio, AM/FM stereo radio, or AM/FM stereo with 8-track stereo tape, stereo cassette tape, or Citizens Bank radio with power antenna. Also available, AM/FM radio with digital clock display. Stereo system include auxiliary speakers. Windshield antenna included with factory-installed radios (except with Citizens Band radio).



CUSTOM WHEEL COVERS. Bold new geometric design with brilliant finish. (Not available on Caprice Landau or Bel Air.)

POWER SKY ROOF. Opens at the touch of a button to let in sunlight, moonlight and outside air for coupes and sedans. (Reduces front seat head room slightly.)

DIGITAL CLOCK. Electrically operated with trim digital dial that reveals hour and minute at a glance, day or night.



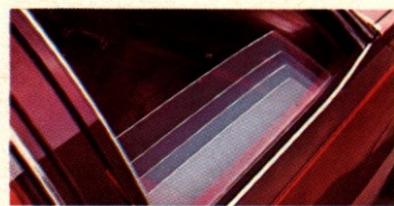
Caprice Classic instrument panel with available Comfortron air conditioning, AM/FM/Citizens Band radio with power antenna, automatic speed control.



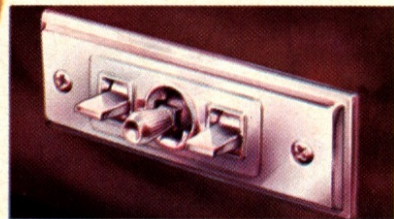
POWER ANTENNA. Antenna automatically extends when radio is turned on. Automatically lowers when radio or ignition is turned off.



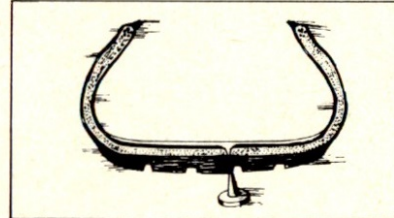
POWER DOOR LOCK SYSTEM. Control on each front door locks and unlocks all doors instantly. Designed for security and convenience.



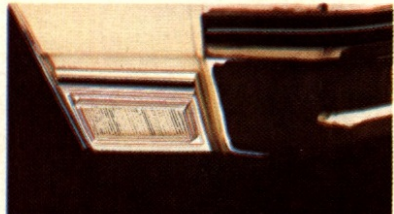
POWER WINDOWS. Raise or lower windows at a touch of a button.



POWER SEAT. Electric 6-way control of entire front seat, or driver's seat only if ordered with 50/50 seats.



PUNCTURE SEALANT TIRE. Special rubber compound inside tread area seals 90% of all repairable tread punctures that are 3/16" or less; lasts for the life of the tire tread.



CORNERING LIGHTS. Mounted on front fenders, lamps are activated by turn signal; help improve visibility while turning.

A WORD ABOUT ASSEMBLY, COMPONENTS AND OPTIONAL EQUIPMENT IN THESE VEHICLES.

The vehicles described in this brochure are assembled at facilities of General Motors of Canada Limited or car Divisions of General Motors Corporation or at facilities of General Motors Corporation operated by the GM Assembly Division. These vehicles incorporate thousands of different components produced by General Motors of Canada Limited and related companies and by various suppliers to General Motors of Canada Limited or related companies. From time to time during the manufacturing process, it may be necessary, in order to meet public demand for particular vehicles or equipment, or to meet federally mandated emission and safety requirements or fuel economy guidelines, or for other reasons, to produce vehicles with different components or differently sourced components than initially scheduled. All such components have been approved for use in our products by General Motors of Canada Limited or related companies and will provide the quality performance associated with our name.

Please note that certain optional equipment can be ordered only in conjunction with other optional equipment. Also, upgrading from specified standard equipment may be necessary when certain optional equipment is ordered. Ask your sales representative for details.

With respect to extra cost optional equipment, make certain you specify the type of equipment you desire on your vehicle when ordering it from your dealer. Some options may be unavailable when your car is built. Your dealer receives advice regarding current availability of options. You may ask the dealer for this information. GM also requests the dealer to advise you if an option you ordered is unavailable. We suggest you verify that your car includes the optional equipment you ordered or, if there are changes, that they are acceptable to you.

All illustrations and specifications contained in this catalogue are based on the latest product information available at time of publication approval. The right is reserved to make changes at any time, without notice, in prices, colours, materials, equipment, specifications and models, and to discontinue models. Some of the equipment shown or described throughout this catalogue is available at extra cost. Check with your Chevrolet dealer for complete information.



GM CONTINUOUS PROTECTION PLAN. Offers service protection in addition to that provided by GM's new vehicle limited warranty. Ask your dealer about this option.

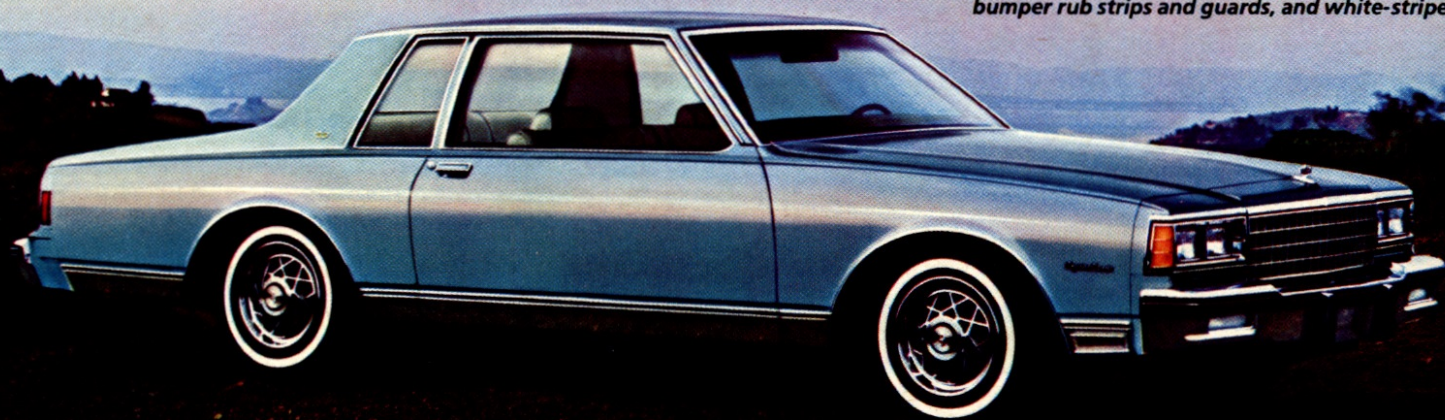
BODY SIDE MOULDINGS. Style highlights that accent the car's clean, crisp lines and help provide protection against nicks and dings.

WIRE WHEEL COVERS. Bright finish on simulated wire wheel covers. (Standard on Caprice Landau Coupe, not available on Bel Air.)

Caprice Estate wagon shown in beige with available roof carrier, Sport mirrors, bumper rub strips and guards, and white-stripe tires.



Caprice Classic Coupe shown in light blue metallic with available tinted glass, cornering lights, body side pin striping, custom wheel covers, bumper rub strips and guards, and white-stripe tires.



CAPRICE CLASSIC MODELS.

A lot of technology has gone into the 1980 Caprice Classic to make it more efficient. But some things about the car we didn't tamper with.

The elegance that has made Caprice so popular with Canadians, for one. Along with the car's full-size roominess, impressive ride and famous Chevy value.

Outside, Caprice is more aerodynamically—and visually—pleasing with a new formal, squared-off roof line that's particularly noticeable and appealing in the coupe. A smart new grille and new wheel covers provide fresh design accents.

Inside, a new tape drive mechanism

makes it easier to raise and lower windows. Automatic transmission, power steering, and power front disc brakes are things that don't cost extra. And the Caprice interior still emphasizes comfort and luxury.

Bearing this out are an electric rear window defogger, and electric clock, door pull straps, courtesy light, fold-down centre armrest on sedans, headlight reminder buzzer, carpeted lower door panel and special Quiet Sound acoustics.

Opt for a Caprice Landau Coupe and the vinyl-covered front roof gets special attention with a new bright roof moulding that runs across and

down the sides of the roof, then extends forward along the full length of the front fenders. Dual Sport mirrors and wire wheel covers are two other distinctive Landau touches.

The beauty and value of Caprice can be yours in a sedan, coupe or the Landau coupe. Or if you need the room, 2- and 3-seat wagons, available for the first time in 1980 with diesel power.

Whatever you decide on, you can be sure of getting a car that's new and right for today—and your driving needs.

The 1980 Caprice Classic.

Caprice Classic Sedan shown in available Custom Two-Tone light camel metallic and beige with available bumper rub strips and guards, wire wheel covers and white-stripe tires.



INTERIOR COLOURS

		BLACK	BLUE	CAMEL	CLARET	GREEN	OYSTER
CAPRICE CLASSIC SEDANS/COUPES							
Standard front bench seat	Cloth (Std.)	•	•	•	•	•	
	Vinyl (Avail.)		•	•	•		
Available 50/50 split front seat	Cloth (Std.)	•	•	•	•		
	Vinyl (Avail.)		•	•	•		
Available Special Custom interior with 50/50 split front seat	Special Custom Cloth	•	•	•		•	

CAPRICE ESTATE WAGON							
Standard front bench seat	Cloth (Avail.)		•	•		•	
	Vinyl (Std.)		•	•	•	•	
Available 50/50 Split front seat	Cloth (Avail.)		•	•			
	Vinyl (Std.)		•	•	•		

IMPALA SEDANS/COUPES							
Standard front bench seat	Cloth (Std.)		•	•	•	•	
	Vinyl (Avail.)		•	•	•		•

IMPALA WAGONS							
Standard front bench seat	Cloth (Avail.)			•	•		
	Vinyl (Std.)		•	•	•		

BEL AIR SEDANS/COUPES/WAGONS							
Standard front bench seat	Cloth (Std.)		•‡	•			
	Vinyl (Avail.)†		•	•			

‡Bel Air Sedan and Coupes only
†Vinyl trims standard on Bel Air Wagons

EXTERIOR COLOURS

	BLACK	BLUE	CAMEL	CLARET	GREEN	OYSTER
Beige		•‡	•	•		•‡
Black	•	•	•	•		•
Blue, Dark (Metallic)		•	•			•
Blue, Light (Metallic)		•				•
Cinnabar			•‡			•
Camel, Light (Metallic)			•			
Camel, Medium (Metallic)			•			•‡
Claret, (Metallic)				•		•
Claret, Dark (Metallic)				•		•
Gray		•	•	•		•
Green, Dark (Metallic)			•		•	•
Silver	•	•‡		•		•
White	•	•	•	•	•	•
Yellow	•		•‡			•‡

CUSTOM TWO-TONE COLOURS AVAILABLE:

 Int. colours: Black, Claret or Oyster	 Int. colours: Black, Claret or Oyster	 Int. colours: Black, Claret or Oyster	 Int. colours: Blue or Oyster	 Int. colours: Blue or Oyster
 Int. colour: Camel	 Int. colour: Camel	 Int. colours: Camel, Claret or Oyster	 Int. colours: Claret or Oyster	 Int. colours: •Black, Claret or Oyster

Vinyl roof colours available: White, gray, black, light blue*, dark green*, light camel* and dark claret*. Check your dealer for details on the eight conventional Two-Tone combinations available and for complete information on vinyl roof availability.

‡Not available on Caprice Landau *Metallic

CHEVROLET INTERIORS.

Slip inside the Caprice, Impala or Bel Air and you'll understand its reason for being. There's room, for one thing—more than enough so legs can stretch, shoulders relax and heads be held high. Comfort's another, deriving from well-proportioned seats that are cushioned where you want them to be and firm where they should be. Then there's the quiet, traceable to road noise insulation. Two good examples: overhead, a one-piece cloth-and-polyfoam headliner and on the floor, one-piece carpeting with new, heavier backing that helps soak up sound. The new aerodynamic styling also works to reduce wind noise. Everywhere you look, The New Chevrolet radiates quality

and confidence. In seat coverings of crisply tailored cloth accented with vinyl, deeply padded interior trim materials, and an instrument panel with new simulated wood-grain treatment and new instrument graphics. For Caprice owners who want to indulge themselves, there's the available Special Custom interior featuring a rich Special Custom Cloth and 50/50 split front seat with centre armrest and reclining passenger seat back. Use the chart at the left to choose the decor and colour combinations that reflect your personal tastes. You'll find even more available Custom Two-Tone colours than last year. You'll also discover still more ways The New Chevrolet adds to the pleasure of driving.



Impala with standard cloth bench seat shown in dark blue with available

air conditioning, power door locks, power windows and AM/FM radio.



Caprice Classic standard cloth bench seat shown in claret with available power windows and power door locks.



Caprice Classic with available Special Custom interior shown in camel with Special Custom cloth, 50/50 split front seat centre armrest and reclining passenger seat back. Other available extras shown are power windows and power door locks.

REASONS TO BUY THE NEW CHEVROLET CAPRICE, IMPALA, BELAIR.

- CANADA'S NUMBER ONE SELLING FULL-SIZED CAR.
- TREND-SETTING STYLING FOR TODAY.
- COMFORTABLE SIX-PASSENGER ROOMINESS AND CONVENIENCE.
- IMPRESSIVE FULL-SIZE RIDE.
- WIDE SELECTION OF EFFICIENCY-ENGINEERED V6 AND V8 ENGINES.
- QUALITY ENGINEERED AND DESIGNED FOR VALUE.

BUILD YOUR OWN CHEVROLET.

(See your dealer for current ordering information.)

MODELS

- | | | |
|---|--|---|
| <input type="checkbox"/> Caprice Classic Sedan | <input type="checkbox"/> Impala Sedan | <input type="checkbox"/> Bel Air Coupe |
| <input type="checkbox"/> Caprice Classic Coupe | <input type="checkbox"/> Impala Sport Coupe | <input type="checkbox"/> Bel Air Sedan |
| <input type="checkbox"/> Caprice Classic Landau Coupe | <input type="checkbox"/> Impala 2-Seat Station Wagon | <input type="checkbox"/> Bel Air 2-Seat Station Wagon |
| <input type="checkbox"/> Caprice Classic 2-Seat Station Wagon | <input type="checkbox"/> Impala 3-Seat Station Wagon | <input type="checkbox"/> Bel Air 3-Seat Station Wagon |
| <input type="checkbox"/> Caprice Classic 3-Seat Station Wagon | | |

COLOURS (See chart on page 10 for colour combinations.)

Exterior colour _____	Interior colour _____	Two-Tone paint _____
Vinyl roof colour _____	Custom Two-Tone paint _____	Upholstery (cloth or vinyl) _____

ENGINES (See chart on page 13 for engine transmission availability.)

- | | |
|---|---|
| <input type="checkbox"/> 3.8 Litre 2-Bbl. (229 Cu. In.) V6-Std. | <input type="checkbox"/> 5.0 Litre 4-Bbl. (305 Cu. In.) V8-Avail. |
| <input type="checkbox"/> 4.4 Litre 2-Bbl. (267 Cu. In.) V8-Avail. | <input type="checkbox"/> 5.7 Litre Diesel (350 Cu. In.) V8-Avail. |

TRANSMISSIONS Automatic Transmission is standard with all models and engines.

AVAILABLE OPTIONS.

- | | | | |
|---|---|---|---|
| <input type="checkbox"/> Air conditioning, Comforton automatic or manual control. | <input type="checkbox"/> AM/FM stereo/Citizens Band radio with power antenna. | and rear suspension. | <input type="checkbox"/> Cornering lights. |
| <input type="checkbox"/> Power windows. | <input type="checkbox"/> AM/FM stereo radio. | <input type="checkbox"/> Inflatable rear shock absorbers. | <input type="checkbox"/> Performance axle ratio. |
| <input type="checkbox"/> Electric clock (Bel Air, Impala). | <input type="checkbox"/> AM radio with 8-track stereo tape. | TIRES | <input type="checkbox"/> Limited slip differential. |
| <input type="checkbox"/> Digital clock. | <input type="checkbox"/> AM/FM stereo radio with 8-track stereo tape. | <input type="checkbox"/> P225/70R-15 steel-belted radial ply white-stripe. | <input type="checkbox"/> Heavy-duty cooling. |
| <input type="checkbox"/> Automatic speed control. | <input type="checkbox"/> AM/FM stereo radio with stereo cassette tape. | <input type="checkbox"/> P205/75R-15 steel-belted radial ply white-stripe. | <input type="checkbox"/> Litter container. |
| <input type="checkbox"/> Power door lock system. | <input type="checkbox"/> AM/FM stereo radio with digital clock display. | <input type="checkbox"/> P215/75R-15 steel-belted radial ply white-stripe. | <input type="checkbox"/> 70-amp Delcotron generator. |
| <input type="checkbox"/> Tinted glass. | <input type="checkbox"/> AM/FM stereo radio with digital clock display. | <input type="checkbox"/> P225/75R-15 steel-belted radial ply white-stripe (wagon). | <input type="checkbox"/> Dual horns (Bel Air, Impala). |
| <input type="checkbox"/> Bumper rub strips. | <input type="checkbox"/> Rear seat speaker.* | <input type="checkbox"/> Stowaway spare. | <input type="checkbox"/> Power Sky Roof (except Bel Air). |
| <input type="checkbox"/> Bumper guards. | <input type="checkbox"/> Dual front and dual rear speakers.* | <input type="checkbox"/> Puncture-sealant tires: | <input type="checkbox"/> Power trunk opener. |
| <input type="checkbox"/> Auxiliary lighting. | <input type="checkbox"/> Power antenna.* | <input type="checkbox"/> P205/75R-15 steel-belted radial ply white-stripe-coups and sedans. | <input type="checkbox"/> Deluxe load floor carpeting (wagon). |
| <input type="checkbox"/> Deluxe luggage compartment trim. | | <input type="checkbox"/> P225/75R-15 steel-belted radial ply white-stripe-wagons. | <input type="checkbox"/> Deluxe cargo area carpeting (wagon). |
| <input type="checkbox"/> Gauge package (includes temperature, fuel economy gauges and trip odometer). | SEATING | MIRRORS | <input type="checkbox"/> Roof carrier (wagon). |
| <input type="checkbox"/> Quiet Sound Group (Bel Air, Impala). | <input type="checkbox"/> 50/50 reclining passenger seat (Caprice). | <input type="checkbox"/> Remote control outside rearview-LH. | <input type="checkbox"/> Power tailgate lock (wagon). |
| <input type="checkbox"/> Intermittent windshield wiper system. | <input type="checkbox"/> Six-way power seat. | <input type="checkbox"/> Remote control outside rearview-LH & RH. | <input type="checkbox"/> Value Appearance Group (Impala). |
| <input type="checkbox"/> Colour-keyed floor mats, front only. | WHEEL COVERS | <input type="checkbox"/> Twin remote Sport. | <input type="checkbox"/> Special Custom Cloth interior (Caprice). |
| <input type="checkbox"/> Colour-keyed floor mats, rear only. | <input type="checkbox"/> Full wheel covers (Bel Air, Impala). | <input type="checkbox"/> Sport-LH remote and RH manual.† | <input type="checkbox"/> Body-side pin striping (except Bel Air). |
| <input type="checkbox"/> Comfortilt steering wheel. | <input type="checkbox"/> Custom wheel covers (except Bel Air). | <input type="checkbox"/> RH visor. | <input type="checkbox"/> Vinyl roof cover. |
| MOULDINGS | <input type="checkbox"/> Sport wheel covers (except Bel Air). | <input type="checkbox"/> Illuminated RH visor. | <input type="checkbox"/> GM Continuous Protection Plan. |
| <input type="checkbox"/> Body side mouldings. | <input type="checkbox"/> Wire wheel covers (Caprice†, Impala). | ALSO AVAILABLE | |
| <input type="checkbox"/> Door edge guards. | SPECIAL SUSPENSIONS | <input type="checkbox"/> Hi-Intensity, Hi-Beam | |
| <input type="checkbox"/> Wheel opening mouldings (Impala). | <input type="checkbox"/> Sport suspension. | | |
| SOUND EQUIPMENT | <input type="checkbox"/> Heavy-duty front | | |
| <input type="checkbox"/> AM radio. | | | |
| <input type="checkbox"/> AM/FM radio. | | | |
| <input type="checkbox"/> AM/FM/Citizens Band radio with power antenna. | | | |

*Available only with a factory installed radio.

†standard on Caprice Landau

