

# '81 CHEVY LUV

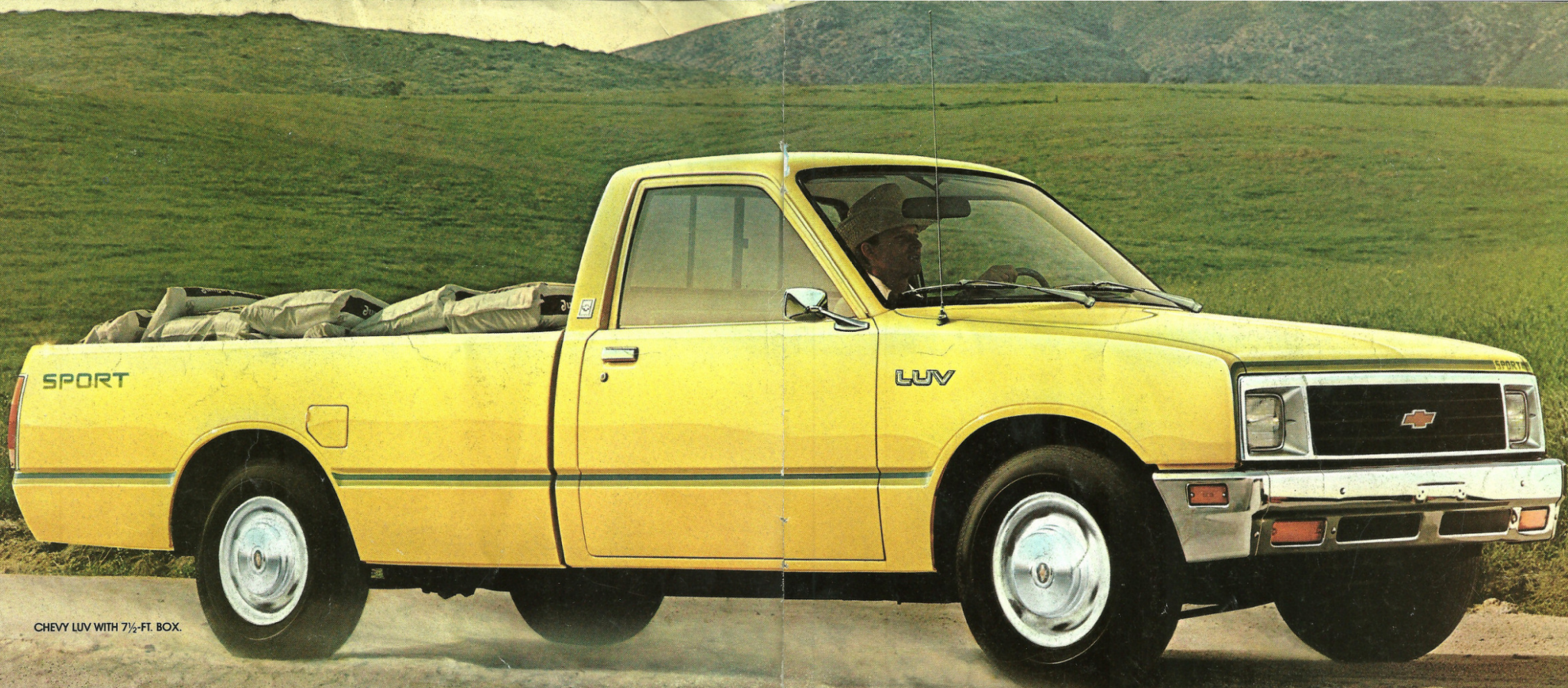
## LIGHT UTILITY VEHICLE



**CHEVY TRUCKS**

**AN IMPORTANT  
STEP AHEAD.**





CHEVY LUV WITH 7½-FT. BOX.

# CHEVY LUV

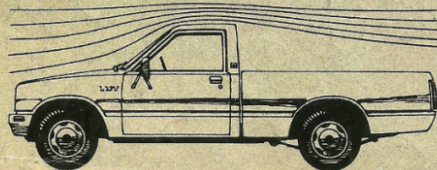
## AN IMPORTANT STEP AHEAD

Since its introduction a few short years ago, LUV, Chevy's Light

Utility Vehicle, has proved to be right on target for the new age of driving. It's a gas-squeezing economy truck that handles big tasks and still delivers pep and pleasure.\*

But the times are changing. And LUV is keeping pace.

Introducing the new LUV.



An important step ahead. Completely restyled. To help meet the tough demands of the '80s.

\*For LUV EPA estimated mileage, check the wall poster displayed at your Chevrolet dealer's showroom, or ask for an EPA mileage sheet to take home with you.

Outside, there's a sleeker, aerodynamic look. And it's sporty looking, too. With the tie-downs placed on the inner side of the box this year.

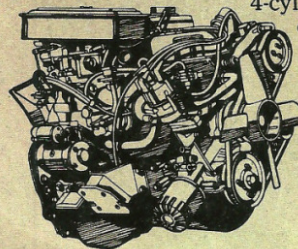
Inside LUV, discover more room to relax in. More leg room and shoulder room than before. Hand-some new interior styling includes a distinctive dash and instrumentation. Plus rich new upholstery and trim.

And there are added conveniences. A new glove box with key lock. Side window defoggers. And a "Smart Switch"—a combination wiper, turn indicator and headlight dimmer switch—located on the steering column.

Of course, the features that were just too good to give up were kept.

Such as LUV's available 7½-ft. cargo box. The longest of any small-size pickup, with an impressive payload capacity of up to 1680 lbs. (including driver, passenger, equipment and cargo). Plus, this year the 7½-ft. cargo box model has a standard 19.1-gallon gas tank for extended cruising range.

The 1.8 Liter (110.8 Cu. In.) powerplant, with the classic in-line 4-cylinder design,



has a cast-aluminum head, cast-iron block and burns unleaded gas.



In addition, LUV's proven-smooth suspension system has been retained. Independent torsion bar suspension in the front and four-leaf, two-stage rubber-bushed springs in the rear.

The new LUV. More right for the times than ever. For more reasons than ever.

**A word about this catalog.** We have tried to make this catalog as comprehensive and factual as possible and

we hope you find it helpful. However, since the time of printing, some of the information you will find here may have been updated. Also, some of the equipment shown or described throughout this catalog are available as factory-installed options, dealer accessories and specialized equipment from various independent suppliers at extra cost. Your dealer has details and, before ordering, you should ask him to bring you up to date.

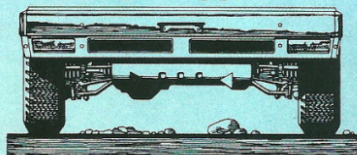
The right is reserved to make changes at any time, without notice, in prices, colors, materials, equipment, specifications and models. Check with your Chevrolet dealer for complete information.



# CHEVY LUV

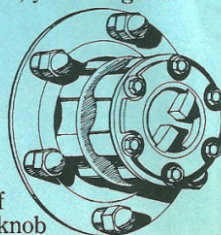
## THE GAS-SQUEEZING 4-WHEELER

LUV's 4x4 has the trim shape and ground-grabbing traction it takes to get you through wide-open spaces or tight squeezes. And do it with fuel-pinching gusto.



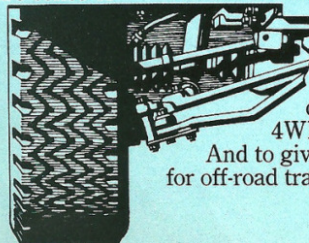
The 4x4 gives you a solid 7.5-in. ground clearance for skimming over bumpy terrain. Yet because the running gear is tucked well

into the chassis, you also get a convenient entry height. And shifting from 2-wheel drive and back again is a snap. A simple turn of the activator knob on each front wheel engages or disengages the front wheels. When disengaged, the front wheels turn



freely without revolving the front axle, differential or drive shaft, reducing wear and improving efficiency on the highway.

LUV 4x4's front suspension delivers a smooth but sure sense of the ground underneath. With independent upper and lower control arms, ball-type joints and torsion bar springs. Direct double-acting front shock absorbers and a stabilizer bar are included.



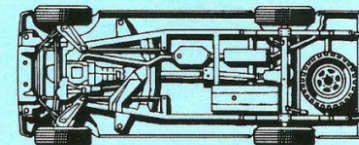
For sporty looks and solid traction, LUV 4x4 comes standard with white-lettered F70-14B bias-belted, all-terrain tires.

The LUV 4x4's manual 4-speed transmission is fully synchronized.

An integral transfer case has a separate shift lever to give you a choice of HI and LO 4WD positions.

And to give added protection for off-road travel the 4x4 has a

shield protection package as standard equipment. Included



are steel shield plates for lower radiator, transfer case and a stone shield for the fuel tank.

Tires supplied by various manufacturers.



LUV 4x4.



# CHEVY LUV PLAIN OR FANCY

LUV has a wide range of available options to choose from. Options that can personalize your LUV, help make it reflect your own tastes in comfort and appearance. So go ahead. Choose what strikes your fancy. And then enjoy, enjoy.

## LUV OPTIONS

	2-Wheel Drive	4-Wheel Drive
Air Conditioning	X	X
Automatic Transmission	X	
Below Eyeline Mirror, Dual	X	X
Bumper Equipment		
Front Guards	X	X
Rear Step Bumper		
—Painted	X	X
—Chromed	X	X
Exterior Decor Package (Requires Mikado)	X	X
High-Back Bucket Seats (Requires Mikado)	X	X
Mikado Trim Option	X	X
Radio—AM Push-Button	X	X
—AM/FM	X	X
Sliding Rear Window	X	X
Sport Stripe Decals	X	X
4 x 4 Decals		X

## The GM Continuous Protection Plan.

It offers service protection in addition to that provided by GM's new vehicle limited warranty. Available only in the U.S. and Canada for the 1981 model year. Ask your dealer about it.



**Available Mikado interior.** Relax in the lap of LUV's most luxurious furnishings. The Mikado color-keyed interior features full-width seats in handsome blue or red Mikado cloth. Underfoot is plush wall-to-wall carpeting. There's a handsome deluxe steering wheel, plus a stitched-urethane, leather-grained gearshift knob.



**Fiberglass cap.** Helps protect cargo from the weather. Dealer installed.



**New wheel cover.** Optional touch of elegance.



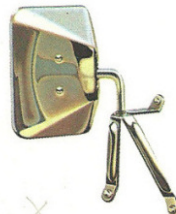
**Standard interior.** The LUV standard interior is all vinyl. It features a foam-padded bench seat and interior trim in a choice of either blue or saddle. Color-keyed, molded floor mats, color-keyed seat belts and embossed door trim panels are also standard.



**Dual standard exterior mirrors.** A convenient aid to increased visibility.



**Storage area.** Seat back tilts forward for access to handy, hidden storage space.



**Below Eyeline mirrors.** Wide-angle visibility.

**Sport stripe option.** Add to your LUV's sporty image. Vivid, striking dual-color stripes run the length of both body sides, across the front of the hood and across the bottom of the tailgate. Your choice of blue/green, or dark orange/light orange combinations are available for all models.



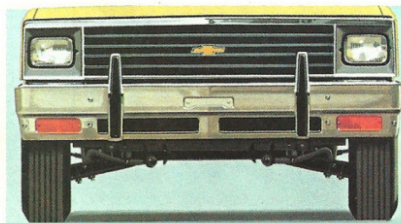
**Bucket seats.** Available with the Mikado interior, in your choice of blue or red Mikado cloth. Foam-cushioned, high-backed comfort with the look of elegance. Between the seats, a transmission lever console is included on both manual and automatic transmission 2WD models.

**Mikado instrument panel.** Includes special bright accents around the instrument panel, cluster and vent grilles of optional Mikado decor.

**Automatic transmission.** Available for 2-wheel-drive model only.



**Sliding rear window.** Handy for increased ventilation.



**Chromed front bumper guards.** Both stylish and practical.



**4x4 tires.** LUV 4x4 comes standard with white-lettered all-terrain tires. Tires supplied by various manufacturers.

## A word about assembly, components and optional equipment in these Chevrolet products.

The Chevy LUVs described in this brochure are assembled at facilities of Isuzu Motors Limited, Japan. These vehicles incorporate thousands of different components produced by various suppliers to Isuzu. From time to time during the manufacturing process, it may be necessary, in order to meet public demand for particular vehicles or equipment, or to meet federally mandated emissions, safety and fuel economy requirements, or for other reasons, to produce Chevy LUVs with different components or differently sourced components than initially scheduled. All such components have been approved for use in these Chevrolet products and will provide the quality performance associated with the Chevrolet name.

With respect to extra cost optional equipment, make certain you specify the type of equipment you desire on your vehicle when ordering it from your dealer. Some options may be unavailable when your vehicle is built. Your dealer receives advice regarding current availability of options. You may ask your dealer for this information. GM also requests the dealer to advise you if an option you ordered is unavailable. We suggest that you verify that your vehicle includes the optional equipment you ordered or, if there are changes, that they are acceptable to you.

## A word about engines:

Chevrolet LUV engines are produced by Isuzu Motors Limited, Japan.

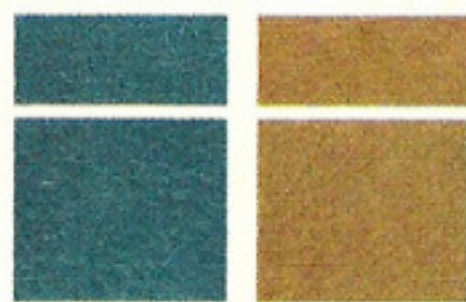


# SPECIFICATIONS

## LUV SERIES 11 SPECIFICATIONS

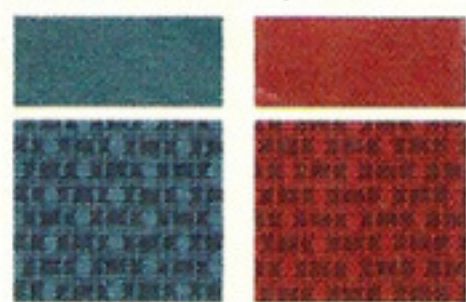
MODELS	(2WD)	(4WD)
WHEELBASE (in.)	104.3/117.9	104.3
GVWR (lbs.)	3550/4150	3750
CURB WEIGHT (lbs.)	2375/2470	2595
GROSS PAYLOAD (lbs.)*	1175/1680	1155
ENGINE—Type (code)	OHC-4 cyl. (L10)†	
Displacement	1.8 Liter (110.8 Cu. in.)	
Net H.P. (SAE)	80 @ 4800	
Net torque (SAE)	95 @ 3000	
Comp. ratio	8.5 to 1	
ELECTRICAL		
Battery 12V	50 AMP	50 AMP
Alternator	40 AMP	50 AMP
TRANSMISSION		
Standard	4 Speed	4 Speed
Available	Automatic	—
BRAKES		
Front Disc	10.16" rotor	
Rear Drum	10" diameter	
Booster	Power assist	
FRONT SUSPENSION TYPE	Independent torsion bar	Frt. driving axle torsion bar
Stabilizer bar	Standard	Standard
Shock absorbers	1" dia.	1" dia.
REAR SUSPENSION TYPE	Hypoid, leaf springs	
Axle capacity (lbs.)	3500	3500
Axle ratio—manual	3.42	4.10
Axle ratio—auto.	4.10	—
Shock absorbers	1" dia.	1" dia.
FUEL TANK		
nominal capacity	13.2/19.1 gal.	13.2 gal.
STEERING	Recirculating ball	
Turning diameter (ft.) (wall-to-wall)		
104.3" wheelbase	36.1	36.1
117.9" wheelbase	40.7	—
TIRES	(5) E78-14B	(5) F70-14B W. Lettered
WHEELS	14" x 5"	14" x 5.5"
FRAME	Ladder type	
*Includes occupants, equipment and cargo.		
†Produced by Isuzu Motors Limited, Japan.		

### STANDARD VINYL TRIM



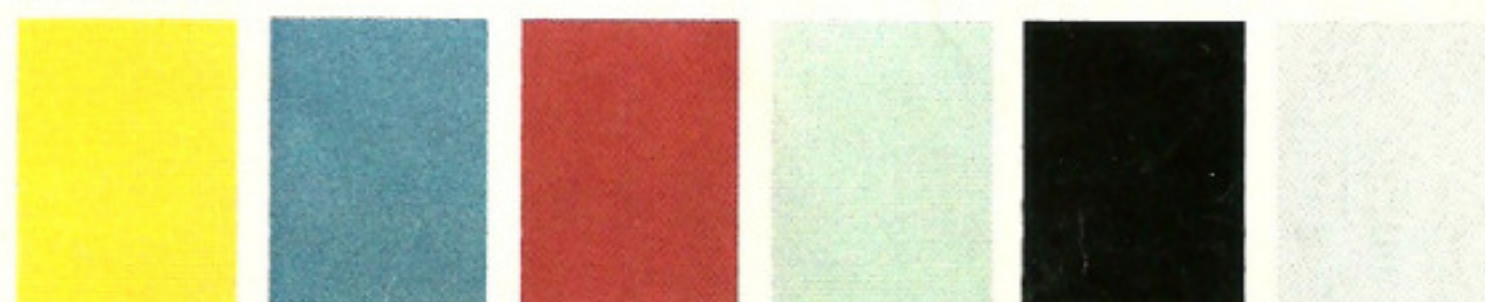
The standard vinyl trim bench seat can be ordered in either blue or saddle.

### MIKADO CLOTH AND VINYL TRIM



The optional Mikado cloth bench seat or bucket seats can be ordered in blue or red.

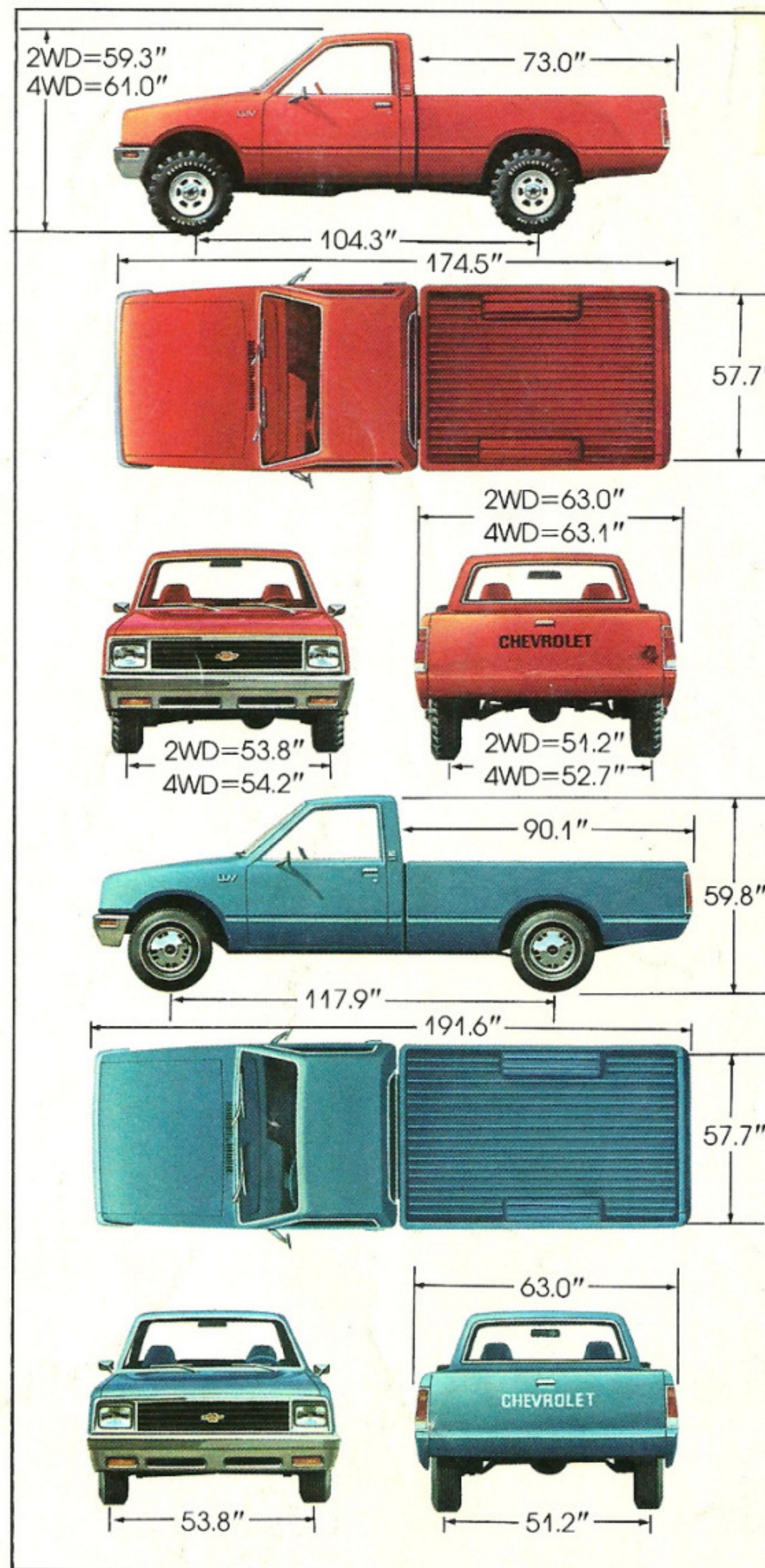
### EXTERIOR COLORS



Marigold Yellow    Metallic Blue \*    Scarlet Red    Metallic Silver \*    Midnight Black    Frost White

Your dealer can tell you which interiors are available with the exterior color you select.

\*New color.



## AN IMPORTANT STEP AHEAD