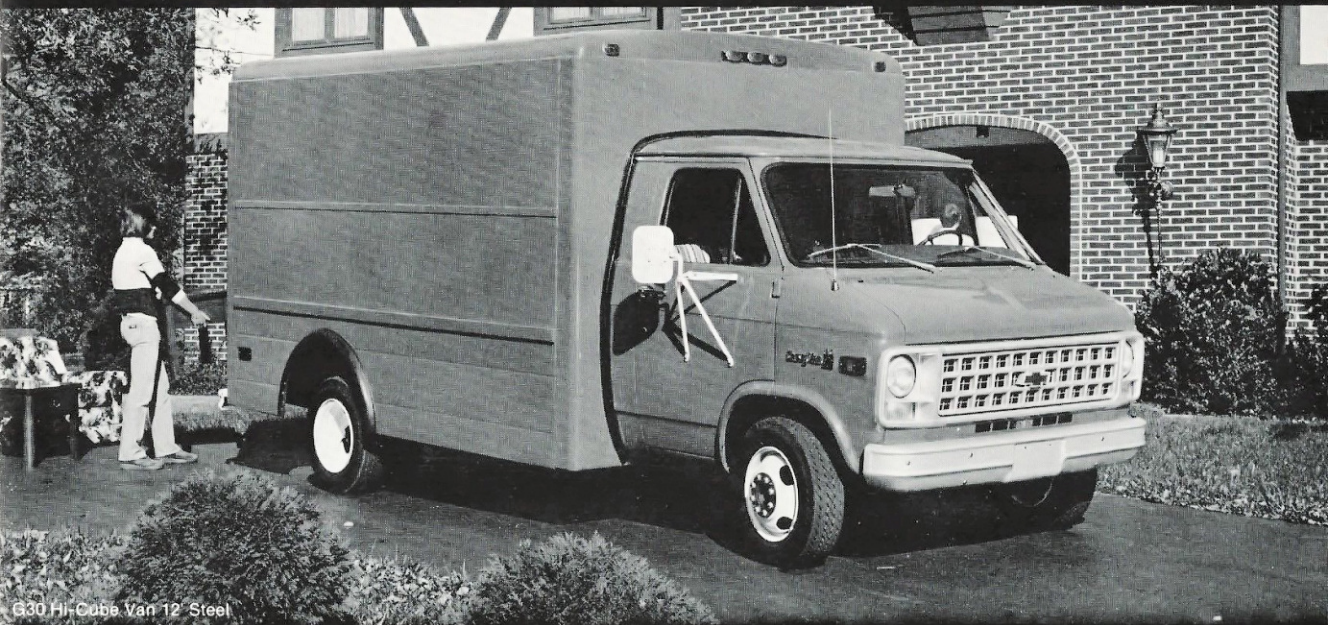
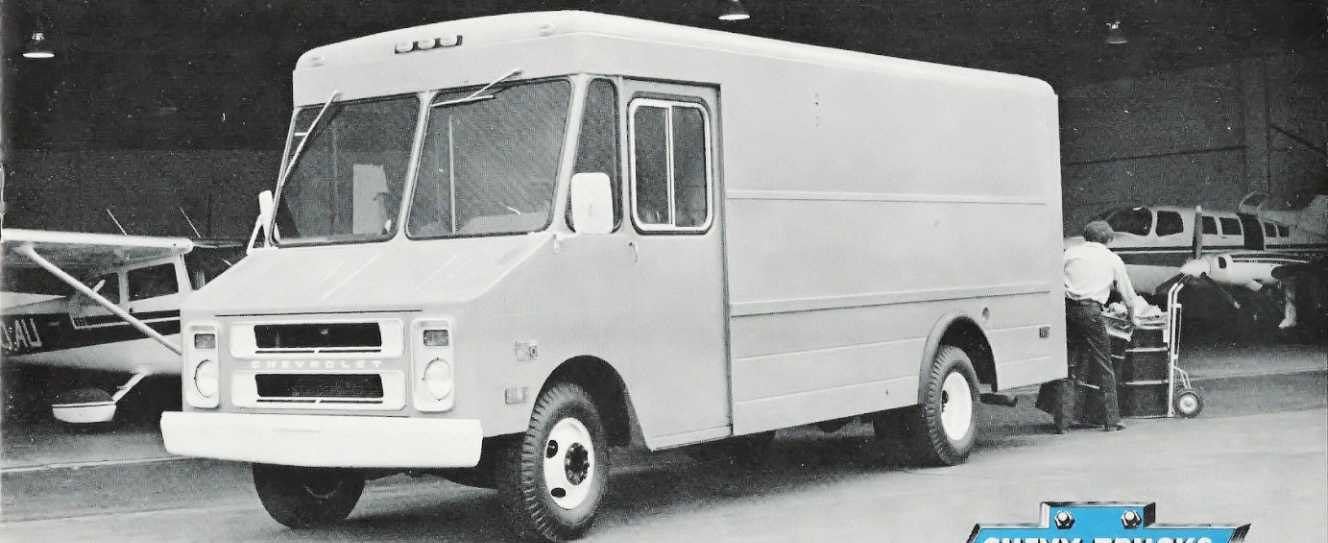


# '82 CHEVY DELIVERY MODELS

## STEEL BODIES



G30 Hi-Cube Van 12' Steel



P30 Step-Van King 14'6" Steel





# TOUGH, ROOMY VANS WITH GASOLINE OR DIESEL POWER

**Step-Van King Steel: Designed for tough jobs like yours.** The Chevy Step-Van King is built tough to meet the demands of rugged stop-and-go service. With a broad range of body sizes and payload capacities available to size it right for your business. Choose from a selection of available powertrains with gasoline or diesel power to meet your operating and performance requirements. Standard design features promote ease of loading and cargo flow throughout the delivery cycle. In total, it stacks up as all business. Chevy wouldn't have it any other way.

**Optional New 6.2 Liter Diesel engine.** Available for delivery after February 1, 1982, the 6.2 Liter Diesel is an all-new engine. Built up from ground zero with modern diesel

technology. 135 SAE Net HP @ 3600 RPM.

Super-efficient Ricardo Comet V precombustion chambers. Rugged construction. And a moisture protection system with an alarm light that signals high water levels in the fuel tank. All these special features and more combine to forge the engine's overall value.

**Choice of body capacities and G.V.W. ratings available.** Chevy's Step-Van comes on wheelbases of 125, 133 and 157 inches with cargo capacities from 415.5 to 577.5 cubic feet in steel bodies. With G.V.W. ratings in two Series, P20\* and P30, ranging from 6,800 to 14,000\*\* maximum payload is 8,237 lbs. for steel models. Bodies are available with 10'6", 12'6" and 14'6" loadspace

lengths. 76-inch inside height is also standard.

\*P20 models not available in California.  
\*\*7600, 8200 lb. G.V.W.R. not available in California; 12,000 lb. maximum G.V.W.R. with 6.2L diesel.

## Chevrolet's Perforation-From-Corrosion Limited Warranty.

Step-Vans are covered by Chevrolet's impressive Three-Year Perforation-From-Corrosion Limited Warranty. Exhaust system components not included. Ask your Chevrolet dealer for details.

**Many standard features.** Sliding side doors are standard. So is front-opening hood, foam-padded adjustable driver's seat, insulated interior, power front disc/rear drum brakes, speedometer calibrated in kilometers as well as miles and much more.

Standard 38" Width Rear Door Opening; Piano Hinges.

Available 60" Width Rear Door Opening; Piano Hinges.

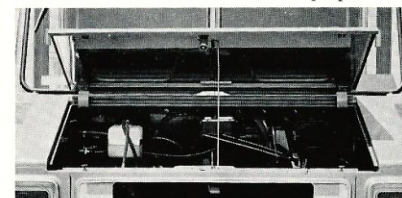
Available 74" Width Rear Door Opening; Rear Doors Wrap Around Body Sides; Strap Hinges.

Available 66" Width Overhead Rear Door.

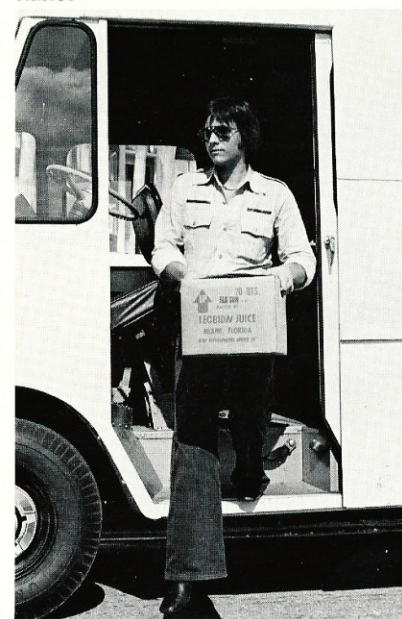


## Rear door choices to speed loading.

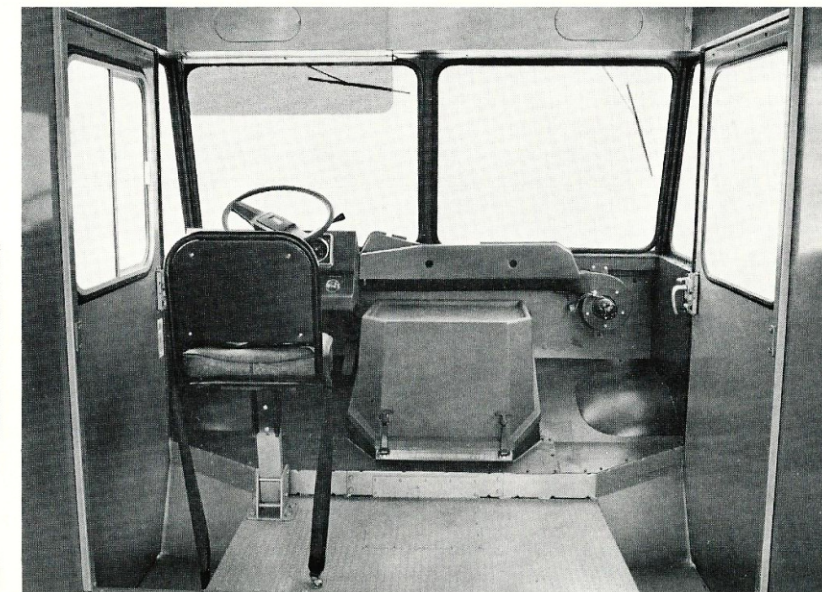
Panel-type double rear doors with 38-inch wide opening are standard equipment. Three options are available; center-opening double rear doors with 60 or 74-inch openings, and upward-acting overhead rear doors. Glass in rear doors and key-locking door handles are standard equipment.



**Front-opening hood for easy maintenance.** Just lift the hood for routine engine service and maintenance.



**Wide sliding side door.** Nearly three feet wide, side doors glide open on smooth-running nylon bushings.



Driver's compartment.

## Designed for driver convenience.

Driver's compartment features an insulated fiberglass snap-out engine cover for access to the engine, an efficient heater-defroster with controls located on the dash, 8" x 30" tinted sun visor, tinted windshield glass, and a foam-cushioned adjustable driver's seat with seat belt. Gauge instrumentation is used to monitor engine functions, with a warning light signaling parking brake activation.

Slip-resistant treadplate is used in the driver's floor. Single adjustable-arm exterior rearview mirrors with combination wide-angle, flat and convex glass heads are provided for RH and LH sides. Non-glare paint is used on front interior surfaces in the driver's line of sight.

When the available 6.2 Liter Diesel engine is specified, a specially engineered equipment package to minimize noise transfer is installed.

**Important: A word about this catalog.** We have tried to make this catalog as comprehensive and factual as possible and we hope you find it helpful. However, since the time of printing, some of the information you'll find here may have been updated. Also, some of the equipment shown or described throughout this catalog are available as factory-installed options, dealer accessories and

specialized equipment from various independent suppliers at extra cost. Your dealer has details and before ordering, you should ask him to bring you up to date.

The right is reserved to make changes at any time, without notice, in prices, colors, materials, equipment, specifications and models. Check with your Chevrolet dealer for complete information.



P20 Step-Van King 12'6" Steel



## THE NEW 6.2 LITER DIESEL--DESIGNED, ENGINEERED, TESTED AND MANUFACTURED FOR DEMANDING TRUCK APPLICATIONS.



**A made-in-America engine for America's light-duty truck needs.** Available for delivery after February 1, 1982, the new 6.2 Liter Diesel truck engine available from Chevrolet is the first domestic diesel engine designed specifically for demanding, light-duty truck applications. An engine with far fewer restrictions than ever before to help make diesel power even more attractive to commercial light-duty truck operators.

**Moves up to 12,000 lbs.** Developing 135 SAE Net HP @ 3600 RPM and 240 SAE (lb. ft.) net torque at 2,000 RPM, the 6.2 Liter diesel is a real work-horse. In properly equipped Step-Vans, it can move up to 12,000 lbs.

### Rugged construction features.

The 6.2 Liter diesel is a truck engine, conceived and developed that way from the bottom-end up. A truck diesel, by nature, uses heavier-duty components than a gasoline engine. The 6.2 Liter engine features stronger and heavier connecting rods and pistons. Five main bearing caps are held in place by four bolts each to provide extra support and help reduce stress. Roller hydraulic lifters on each valve lifter assembly roll along the forged steel camshaft's lobes for low friction and wear. To help promote effective sealing, the cylinder heads feature five bolts around each cylinder. The 6.2 Liter has a warning system that indicates there is water

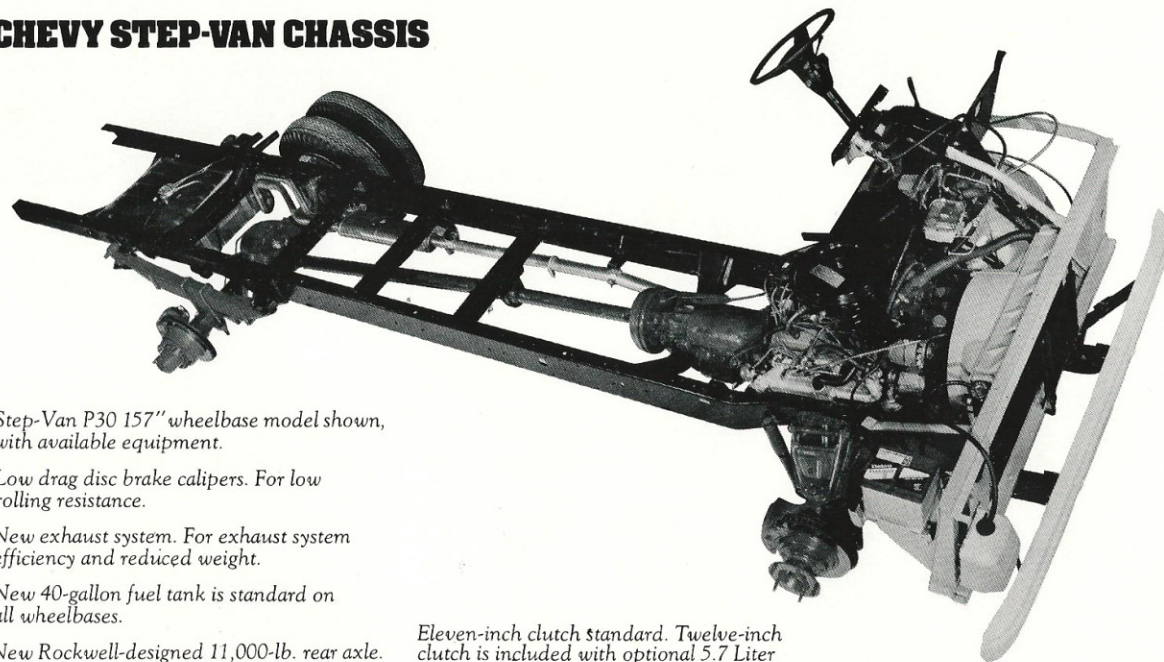
in the fuel supply system before problems occur, designed to prevent contaminants from reaching the fuel metering system.

**The result of over 40 years of diesel engine technology.** General Motors began manufacturing diesel engines for many transportation applications over 40 years ago, making them one of the earliest and most long-standing diesel manufacturers in the United States. The 6.2 Liter light-duty truck diesel is one of the latest in the long line of engine technology developments by GM.

### A WORD ABOUT ENGINES.

Some Chevrolets are equipped with engines produced by other GM divisions, subsidiaries, or affiliated companies worldwide. See your Chevrolet dealer for details. Please refer to Chevy power team engine information on the back cover of this catalog.

## CHEVY STEP-VAN CHASSIS



Step-Van P30 157" wheelbase model shown, with available equipment.

Low drag disc brake calipers. For low rolling resistance.

New exhaust system. For exhaust system efficiency and reduced weight.

New 40-gallon fuel tank is standard on all wheelbases.

New Rockwell-designed 11,000-lb. rear axle. For 12,000 G.V.W.R. and over on dual rear wheel regular chassis.

Two-stage rear-leaf springs. Automatically adapt to change in load.

Dual rear wheels are optional on P30 models. For high capacity and added body width.

Eleven-inch clutch standard. Twelve-inch clutch is included with optional 5.7 Liter (350 Cu. In.) V8 & 6.2 Liter (379 cu. in.) V8 diesel.

Delco Freedom II battery. Maintenance free. Quick starts.

Computer-matched power brakes. For smooth stops.

Rugged girder beam independent front suspension. To help absorb bumps.

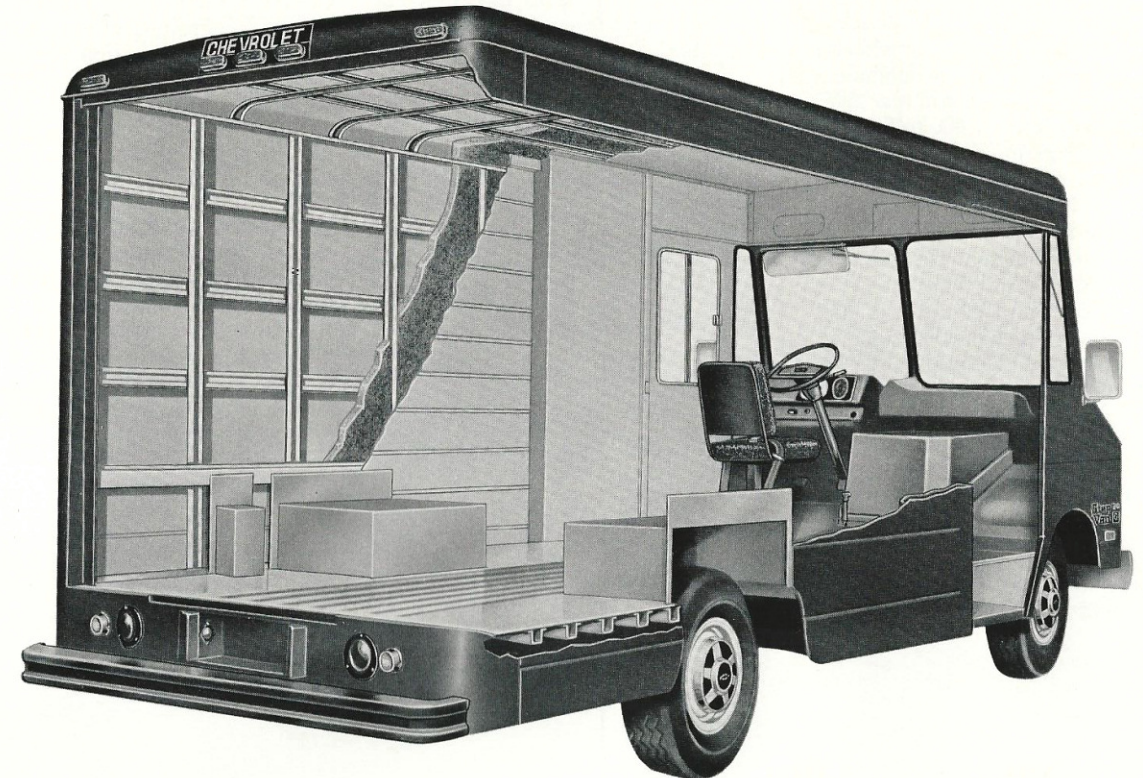
Recirculating ball gear steering. Featured with standard power steering.

## RUGGED STEEL BODY CONSTRUCTION

Heavy-gauge steel body panels are welded to the steel framework structure, forming a rigid durable body. Steel panels line the body interior,

providing a smooth surface that is both practical and durable. Cargo floor center panels are rigid corrugated steel for easy cargo handling,

with smooth steel available. Thick fiberglass insulation is installed between inner and outer roof, side and rear paneling.



P20 Step-Van King Steel 12'6" Shown.

Side doors glide smoothly into enclosed door pockets on non-rusting nylon bushings.

Standard rectangular wheelhousings provide additional load level space for efficient cargo space utilization.

Available 74" width rear door shown.

Fiberglass insulation installed between inner and outer panels.

Foam rubber padded driver's seat with pedestal lock moves out of the way for walk-through access to load area.

Rear bumper step-type.

The all-metal steel center cargo floor panel is ribbed for easy slide-in loading.

Standard rear door opening is 38 inches wide with 60" and full-width rear doors available.

## EXTENSIVE CORROSION PROTECTION



Blue shaded areas designate body panels using special alloy or plated steel.

Protective liners inside the front fenders act as self-washing shields to protect against corrosion-causing mud and slush. All exterior body panels below the roof line are fabricated of high-performance iron-zinc alloy steel. Front bumper of corrosion-resistant zinc-plated steel is Elpo-primed. Power steering hydraulic lines are Zincoterne® coated. Front step wells and rear wheelhousings are corrosion-resistant galvanized steel. Rear door hinge assemblies are zinc coated. All welded joints are sealed. Body panels are thoroughly cleaned, primed, then given a high-quality enamel finish. Conventional undercoating is applied to the entire underbody for added protection.



## CHEVY HI-CUBE VAN: TWO WHEELBASES, CAPACITIES TO 564 CUBIC FEET

**7,400 to 8,600 G.V.W.R. vans with steel body.** Chevy Hi-Cube Van with handy 10 ft. loadspace length, with up to 406 cubic foot cargo capacity. 82.5 inch wide body has 76 inch inside height standard. Single rear wheels are standard with 125 inch wheelbase. Depending on spring and rear axle capacities ordered, 7,400 to 8,600 lbs. G.V.W. ratings are available.

**8,900 or 10,000 lb. G.V.W. ratings.** Available in 10 ft. or 12 ft. loadspace lengths on 125 inch or 146 inch wheelbase, these Hi-Cube Vans offer more work space. Standard width is 90.2 inches and 76 inch inside height. Loadspace capacities range from 469 to 564 cubic feet. Dual rear wheels with 6,200 lb. rear axle are standard with the 8,900 lb. G.V.W. rating. A 7,500 lb. rear axle comes with the available 10,000 lb. G.V.W. rating.

**Power Teams.** The standard engine is the 5.7 Liter (350 cu. in.) V8. A three-speed synchromesh transmission is standard with the 5.7 Liter (350 cu. in.) V8, with a three-speed automatic available.

**Other standard features.** Chevrolet's High Energy Ignition System, Delco Freedom Battery, and Delcotron Generator with integral voltage regulator are standard. Other standard equipment includes massive Girder Beam independent front suspension, eight-leaf rear springs, front disc/finned rear drum brakes.

**The GM Continuous Protection Plan.** An option that offers service protection in addition to that provided by GM's new vehicle limited warranty. Available only in the U.S. and Canada for the 1982 model year. Ask your dealer about it.

**Chevrolet's Perforation-From-Corrosion Limited Warranty.** Chevy Hi-Cube Vans are covered by Chevrolet's impressive Three-Year Perforation-From-Corrosion Limited Warranty. Exhaust system components not included. Ask your Chevrolet dealer for details.

### A WORD ABOUT ENGINES.

Some Chevrolets are equipped with engines produced by other GM divisions, subsidiaries, or affiliated companies worldwide. See your Chevrolet dealer for details.

Please refer to Chevy power team engine information on the back cover of this catalog.

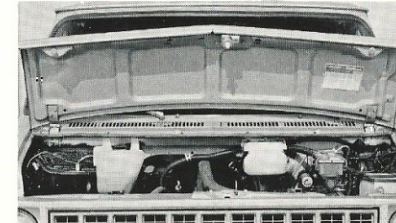
## FEATURES

### Comfort and convenience items.

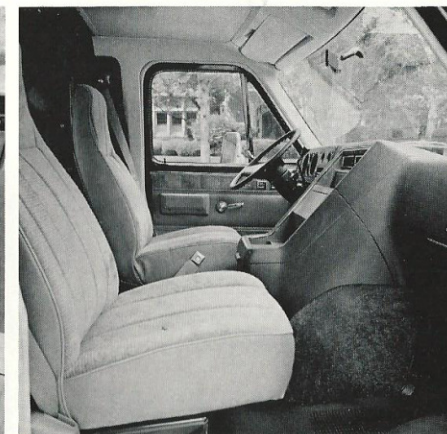
The Hi-Cube Van offers many standard features to help make your working environment comfortable. Chevy front bucket seats are full foam cushioned and generously wide for lateral support. Lowering side windows, ventpanes, individually controlled air vents, door panel arm rest and deluxe air heater-defogger all lend to driver comfort and convenience.

**Easy loadspace access.** The loadspace is easily accessible from the driver's seat and the standard 76 inch inside height allows loading or locating cargo while standing.

**Front hood design makes service checks faster.** Chevy Hi-Cube Van's front hood makes routine service a snap. For inspection and maintenance, the oil check and fill, battery, radiator, fuel pump and major engine components are readily accessible. In fact, 27 separate items can be quickly checked, simply by raising the hood.



Standard low-back seats.



Special Interior Trim



G30 Hi-Cube Van 12' Steel - Overhead Door

**Rear door choices.** Double rear doors with a 38 inch wide opening are standard on the Chevy Hi-Cube Van. Options include wider rear doors; 60 inch width center-opening available on all bodies, 74 inch wide with strap hinges available on 125 inch wheel-

base 82.5 inch width steel bodies only. Full-width rear doors are also available, with opening size keyed to body width. Overhead rear door is available for all Hi-Cube Van models, size keyed to body width.

## A WORD ABOUT ASSEMBLY, COMPONENTS AND OPTIONAL EQUIPMENT IN THESE CHEVROLET PRODUCTS.

The chassis for the Step-Van Series P20 and P30 and the Hi-Cube Van Series G30 described in this catalog are assembled at facilities of General Motors Corporation operated by Chevrolet Motor Division or General Motors of Canada.

These chassis incorporate thousands of different components produced by various divisions of General Motors and by various suppliers to General Motors. From time to time during the manufacturing process, it may be necessary, in order to meet public demand for particular vehicles or equipment, or to meet federally mandated emissions, safety and fuel economy requirements, or for other reasons, to produce Chevrolet products with different components or differently sourced components than initially scheduled. All such components have been approved for use in Chevrolet products and will provide the quality performance associated with the Chevrolet name. The bodies for these vehicles are made by Union City Body Company, Inc.

With respect to extra cost optional equipment, make certain you specify the type of equipment you desire on your vehicle when ordering it from your dealer. Some options may be unavailable when your vehicle is built. Your dealer receives advice regarding current availability of options. You may ask your dealer for this information. GM also requests the dealer to advise you if an option you ordered is unavailable. We suggest that you verify that your vehicle includes the optional equipment you ordered or, if there are changes, that they are acceptable to you.

These chassis are also available from GMC dealers under the GMC nameplate Series P2500, P3500, and G3500.



G30 Hi-Cube Van 12' Steel



## Step-Van Specifications

SERIES	P20*		P30	
GVW RANGE (LB.)	6800 to 8000		7600* to 14,000	
AVAILABILITY	STANDARD	OPTIONAL	STANDARD	OPTIONAL
ENGINE—LITER (CU. IN.)	4.8L (292 CU. IN.)	—	4.8L (292 CU. IN.)	—
V8 (LT9)	—	5.7L (350 CU. IN.)	—	5.7L (350 CU. IN.)
V8 (LL4)	—	+6.2L (379 CU. IN. DIESEL)	—	+6.2L (379 CU. IN. DIESEL)
FRONT SUSPENSION—TYPE	INDEPENDENT—COIL SPRINGS		INDEPENDENT—COIL SPRINGS	
CAPACITY (LB.)	3700		4000	
REAR SUSPENSION—AXLE TYPE	SEMI-FLOATING		FULL-FLOATING	
CAPACITY (LB.)	5700		7900	
BRAKES—FRONT/REAR	POWER—DISC/DRUM		POWER—DISC/DRUM@	
STEERING—TYPE	POWER		POWER	
TRANSMISSION—MANUAL	4-SPD.		4-SPD.	
—AUTOMATIC	—		—	
TIRE SIZE, TUBELESS	LT215/85R16C		LT215/85R16C-Fr. LT215/85R16D-Rr.	

@ 4-wheel disc brakes are included on models with 11,000-lb. rear axle. Tire load range—C(6PR), D(8PR). # Not available in California. \* Not available with HA3 or HD1 11,000-lb. rear axle. • Larger size tubeless and tube-type tires available. \* 7600, 8200 GVWR not available in California. † Available for delivery after February 1, 1982; 12,000 lb. maximum GVWR.

## Hi-Cube Van Specifications

SERIES	G30 HI-CUBE VAN	
GVW RANGE (LB.)	7400† to 10,000	
AVAILABILITY	STANDARD	OPTIONAL
ENGINE—LITER (CU. IN.)	5.7L (350 CU. IN.)	—
V8	—	—
FRONT SUSPENSION—TYPE	INDEPENDENT—COIL SPRINGS	
CAPACITY (LB.)	3900	
REAR SUSPENSION—AXLE TYPE	FULL-FLOATING	
CAPACITY (LB.)	5700	6200*, 7500
BRAKES—FRONT/REAR	POWER—DISC/DRUM	
STEERING—TYPE	MANUAL	POWER
TRANSMISSION—MANUAL	3-SPD.	—
—AUTOMATIC	—	3-SPD. AUTOMATIC
TIRE SIZE, TUBELESS	8.75-16.5C	•

Tire load range—C(6PR), D(8PR). \* Standard on 125" WB steel (E31) or alum. (E36) models of 8900 GVWR and 146" WB steel (E38) and alum. (E39) models. † 7400 GVWR not available in California. • Larger size tubeless and tube-type tires available.

## Engine Specifications

ENGINES WITH H. DUTY EMISSIONS FOR ALL STATES				HEAVY-DUTY EMISSIONS OVER 8,500 LBS. G.V.W.R.
DISPLACEMENT—LITER (CU. IN.)	4.8L (292 CU. IN.) L6	5.7L (350 CU. IN.) V8	6.2L (379 CU. IN.) V8	
ENGINE ORDERING CODE	L25(A)	LT9(B)	LL4(B)	
BORE & STROKE (IN.)	3.9 x 4.1	4.0 x 3.5	3.98 x 3.82	
COMPRESSION RATIO	7.8 TO 1	8.3 TO 1	20.3 TO 1	
SAE NET HORSEPOWER @ RPM	115 @ 3400	▲ 160 @ 3800	● 155 @ 4000	▲ 135 @ 3600
SAE NET TORQUE (LB-FT) @ RPM	215 @ 1600	▲ 250 @ 2800	● 240 @ 2800	▲ 240 @ 2000

(A) Produced by GM de Mexico Engine Plant. (B) Produced by GM-Chevrolet Motor Division.  
▲ All states except California. • California only.



**CHEVY IS THE POWER  
IN TRUCKS.**

## Step-Van King Steel Selector

Series	Wheel base (in)	Overall Length (in)	Load Length (in)	Load Space Width (in)	Height (in)	Capacity (cu ft)	Payload Range (lb)
CP208	125	226.5	128	*77.5	76	415.5	P20 1315-2384
CP308							P30 1939-8237
CP210	133	250.5	152	*77.5	76	496.5	P20 1042-2111
CP310							P30 1668-7966
CP314	157	274.5	176	*77.5	76	577.5	P30 1339-7637

\*Standard

Hi-Cube Dimensions	125" WHEELBASE		146" WHEELBASE	
	STEEL	STEEL	STEEL	STEEL
OVERALL LENGTH	211.5"	211.5"	235.5"	235.5"
BODY LENGTH	10"	10"	12"	12"
BODY HEIGHT, INSIDE	76"	76"	76"	76"
BODY WIDTH, INSIDE	77.5"	90.2"	90.2"	90.2"
BODY WIDTH, OUTSIDE	82.5"	95.2"	95.2"	95.2"
REAR DOOR OPENING WIDTH	38" to 74"	38" to 74"	38" to 78"	38" to 78"
REAR DOOR OPENING HEIGHT	69.4"	69.4"	69.4"	69.4"
BODY LENGTH, INSIDE	120.7"	120.7"	144.7"	144.7"