

'82 CHEVY EL CAMINO



**CHEVY IS THE POWER
IN TRUCKS.**

1982 CHEVY EL CAMINO

What other pickup looks this good... We'll admit to a little bias but we think El Camino is one of the most striking pickups on the road today. And with its new front-end styling and five handsome new colors, we think it looks better than ever for 1982.

Adding to El Camino's appeal is its attractive interior. For 1982, it includes new seating, a new instrument panel, and a handy new steering-column-mounted "Smart Switch."

Of course, styling and comfort are the basis of every 1982 El Camino. You can build on those qualities with any of three optional paint or special equipment packages: Conquista, Super Sport, or Royal Knight.

Works this hard... El Camino's rugged ribbed steel bed hauls up to 35.5 cu. ft. of cargo. And its payload is 1250 lbs., including passengers, equipment and cargo.

For rigidity, the cargo box, tailgate, doors and hood are constructed of a double layer of steel. And standard air-adjustable rear shocks help you keep the load level to the road.

And performs efficiently. El Camino's standard 3.8 Liter V6 offers spirited performance and impressive fuel economy ratings.

El Camino's combination of styling, construction, efficiency and standard features makes it a great choice for a lot of things, from camping to commuting to construction, even to towing

trailers up to 5000 lbs. when properly equipped. Just think of all it could do for you!

Choose from four very distinctive El Caminos.

El Camino. Base El Camino (bottom photo, left column) comes impressively equipped for value. Standard equipment, in addition to automatic transmission, power steering and power brakes, includes a 3.8 Liter V6 with Computer Command Control, air-adjustable rear shock absorbers, full wheel covers, steel-belted radial ply tires and much more.

Conquista. This dramatic paint option (top photo, center column) to the base El Camino features an accent color on the roof and lower body sides to complement the primary body color. Also included are bright moldings along the paint break, lower body side and wheel openings. Conquista decal identification on the tailgate and an instrument panel nameplate complete the package.

Super Sport. This attractive model (middle photo, left column) takes an exciting step beyond El Camino's basic value with the addition of a large front air dam, painted sport mirrors and new Rally wheels. Also included is a choice of 7 paint accent colors on the lower body, decal striping plus Super Sport identification on the tailgate, doors and instrument panel.

Royal Knight. A striking option to the Super Sport model, Royal Knight (bottom photo, right column) features a regal hood decal, tri-tone pin striping and Royal Knight identification on the front

fenders and tailgate — each color-keyed to the body color you choose.

El Camino in action. Shown at right are just a few of the many personal and professional uses for the versatile Chevy El Camino.

Other businessmen who find El Camino a valuable asset include landscapers, auto parts dealers, pest control servicemen, expediter, office suppliers, building tradesmen, utility workers, public safety supervisors and — just maybe — you.

See your Chevy Truck dealer and check out a versatile El Camino today!

Important: A word about this catalog. We have tried to make this catalog as comprehensive and factual as possible and we hope you find it helpful. However, since the time of printing, some of the information you will find here may have been updated. Also, some of the equipment shown or described throughout this catalog are available as factory-installed options, dealer accessories and specialized equipment from various independent suppliers at extra cost. Your dealer has details and, before ordering, you should ask him to bring you up to date.

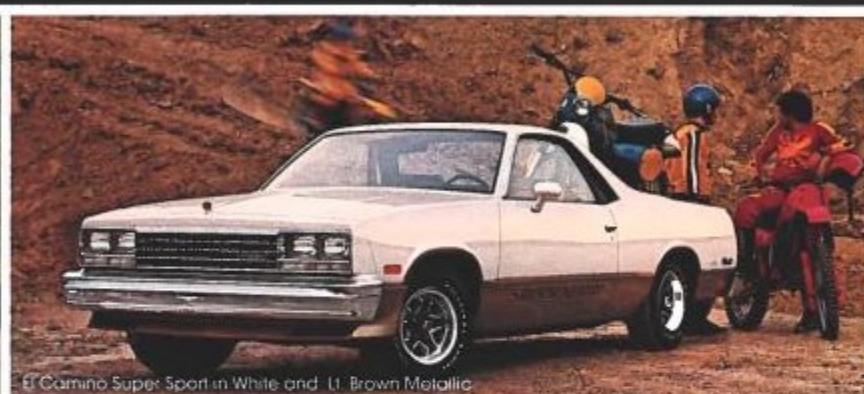
The right is reserved to make changes at any time, without notice, in prices, colors, materials, equipment, specifications and models. Check with your Chevrolet dealer for complete information. To obtain EPA fuel economy estimates for Chevrolet light-duty trucks, check the wall poster at your dealer's showroom. Tires supplied by various manufacturers.



El Camino in Lt. Brown Metallic



El Camino Conquista in Redwood Metallic and Beige



El Camino Super Sport in White and Lt. Brown Metallic



El Camino Super Sport in Dk. Blue Metallic and Lt. Blue Metallic



El Camino Super Sport in Silver Metallic and Dk. Blue Metallic



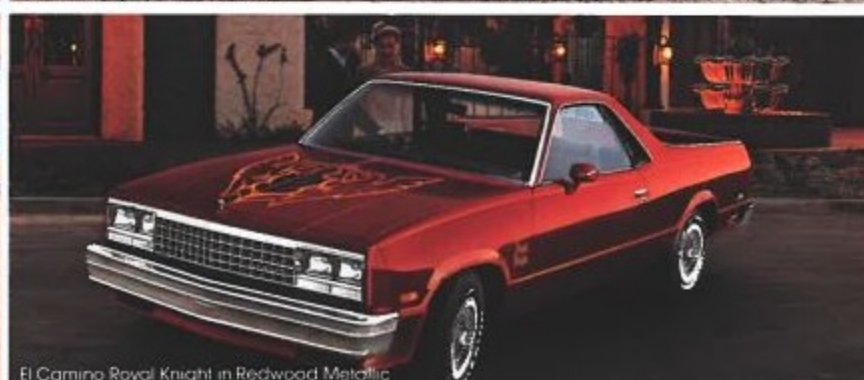
El Camino in Dk. Jade Metallic



El Camino in Beige



El Camino Conquista in Dk. Blue Metallic and White



El Camino Royal Knight in Redwood Metallic

Front Cover: El Camino Conquista in Light Redwood Metallic and Redwood Metallic

EL CAMINO INTERIORS PRACTICAL OR PERSONAL

El Camino's standard interior begins with a high level of comfort and businesslike practicality. It's outfitted with padded headliner and armrests, door-to-door color-keyed carpeting, and new notchback bench seats with fold-down center armrest in knit cloth or vinyl.

Step up to our new Special Custom interior and you'll get a new notchback bench seat in knit velour cloth.

Yet another comfortable choice is our optional 55/45 split seat with 45% of the seat area on the driver's side and a single folding armrest.

All El Camino interiors have been made more attractive this year with the addition of a handsome new instrument panel featuring easy-to-read round gages accented by simulated wood-grain trim.

Note, too, El Camino's handy new steering-column-mounted "Smart Switch." It gives you fingertip control not only for turn signals but for headlight bright/dim, windshield wash/wipe and optional automatic speed control.



Special Custom Interior with knit velour cloth upholstery in Redwood



Std notchback bench seat w/ knit cloth upholstery in Dark Blue



Optional 55/45 split seat with vinyl upholstery in Camel



New instrument panel with steering-column-mounted "Smart Switch" and several popular options

COMFORT, APPEARANCE AND PERFORMANCE OPTIONS



Wire Wheel Covers



Comfort Steering Wheel



New Quartz Analog Clock



Air Conditioning



Automatic Speed Control w/ Resume Speed



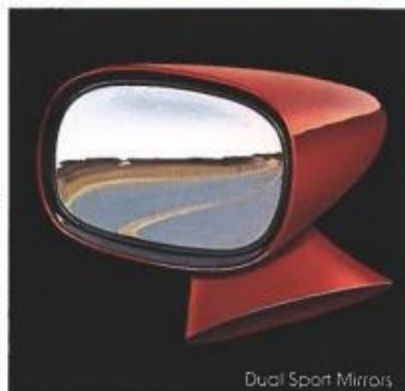
Cargo Box Side Rail



Delco AM/FM Stereo w/ 8-Track Tape



Power Windows



Dual Sport Mirrors

OPTION	AVAILABILITY	
	EL CAMINO	SUPER SPORT
Air Conditioning	X	X
Automatic Speed Control w/ Resume Speed	X	X
Axle Rear Locking Differential	X	X
Battery Heavy Duty	X	X
Bumper Equipment: Front & Rear		
Bumper Guards	X	X
Bumper Rub Strips	X	X
Clock, Electric w/ Quartz Movement	X	X
Color-aided Rear Mirrors	X	X
Cooling, Heavy Duty	X	X
Cover, Cargo Box Tonneau	X	X
Door Lock System, Power	X	X
Gage Package w/ Trip Odometer and Clock	X	X
Gage Package w/ Trip Odometer Includes Trip Odometer and Clock	X	X
Glass, Tinted	X	X
Hed lamps, Halogen H-Beam	X	X
Lighting, Auxiliary	X	X
Mirrors		
Outside Rearview LH Remote	X	
Sport LH Remote and RH Manual	X	Std
Moldings		
Deluxe Body Side, Black Only	X	
Door Edge Guard	X	X
Delco Radio Equipment		
AM Radio	X	X
AM/FM Radio	X	X
AM/FM Stereo Radio	X	X
AM/FM Stereo w/ 8-Track Tape	X	X
AM/FM Stereo w/ Cassette Tape	X	X
Power Antenna	X	X
Fixed Mast Antenna	X	X
Rails, Cargo Box Side	X	X
Speed of Custom Interior	X	X
Steering Wheel, Comfort	X	X
Suspension, Sport	X	X
Tank, Fuel 22-gal	X	X
Tie-Downs, Cargo Box	X	X
Wheel Trim		
Sport Wheel Covers	X	X
Wire Wheel Covers	X	
Rally Wheels	X	Std
Wheel Cover Locking Package, Wire Covers Only	X	
Windows, Power	X	X
Wipers, Intermittent Windshield	X	X

Choose from three powerplants... El Camino's standard 3.8 Liter V6 offers you both impressive performance and economy. For increased power, you can specify one of two optional V8 engines. The 4.4 Liter (267 Cu. In.) V8 with staged 2-barrel carburetor (not available in California) or the 5.0 Liter (305 Cu. In.) V8 with 4-barrel carburetor.

...each with Computer Command Control. This sophisticated, thoroughly tested on-board computer continuously monitors gasoline engine functions. It also fine-tunes engine performance, under all normal operating conditions, as you drive. Air-fuel mixtures are con-



stantly adjusted to driving conditions, and the system helps compensate for altitude, barometric pressure and temperature changes. Allows impressive fuel economy.

As with all Chevrolet emissions system components, Computer



Command Control is covered by a 5-year/50,000-mile emissions system warranty. Ask your dealer for details.

A word about engines. Some Chevrolets are equipped with engines produced by other GM divisions, subsidiaries, or affiliated companies worldwide. See your Chevrolet dealer for details.

New low-drag disc brakes for added efficiency. Now standard on El Camino, these front disc brakes have a quick take-up master cylinder. The brake calipers contact the rotor only when braking to reduce rolling resistance.

The GM Continuous Protection Plan. An option that

Concealed storage area inside. Behind the driver's seat and under the cargo bed is a concealed storage area that's perfect for small cameras, purses or other valuables. There's easy access from either side, and an adjacent space holds a spare tire that has an extractor for easy removal.



offers service protection in addition to that provided by GM's new vehicle limited warranty. Available only in the U.S. and Canada for the 1982 model year. Ask your Chevy dealer about it.

Extensive anti-corrosion measures throughout. Every 1982 El Camino benefits from several corrosion-resisting treatments, including Zincrometal® body panels, a cathodic ELPO body coating, a hot melt wax frame coating and Zincroterne® coating on brake and fuel lines.

These treatments, along with extensive sealant and wax weatherproofing and a baked acrylic enamel paint finish, allow us to offer a Three-Year Perforation-From-Corrosion Limited Warranty. Exhaust system components not included. See your Chevy dealer for details.

Double-wall construction. El Camino's cargo box sidewalls and tailgate are constructed of two panels of steel. The inner wall takes minor dents and nicks without showing through to the outside. Doors and hood have double-wall construction, too. And outer fenders have the protection of an inner fender.



A Word About Assembly, Components and Optional Equipment in These Chevrolet Products. The Chevy El Caminos described in this catalog are assembled at facilities of General Motors Corporation operated by GM Assembly Division.

These vehicles incorporate thousands of different components produced by various divisions of General Motors and by various suppliers to General Motors. From time to time during the manufacturing process, it may be necessary, in order to meet public demand for particular vehicles or equipment, or to meet federally mandated emissions, safety and fuel economy requirements, or for other reasons, to produce Chevrolet products with different components or differently sourced components than initially scheduled. All such components have been approved for use in Chevrolet products and will provide the quality performance associated with the Chevrolet name.

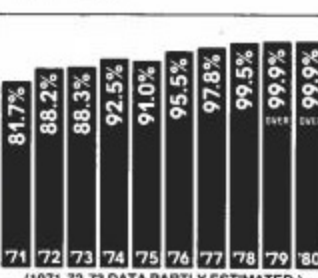
With respect to factory-installed extra cost optional equipment, make certain you specify the type of equipment you desire on your vehicle when ordering it from your dealer. Some options may be unavailable when your vehicle is built. Your dealer receives advice regarding current availability of options. You may ask your dealer for this information. GM also requests the dealer to advise you if an option you ordered is unavailable. We suggest that you verify that your vehicle includes the optional equipment you ordered or, if there are changes, that they are acceptable to you.

This vehicle is also available from GMC dealers under the name GMC Caballero.

Standard air-adjustable rear shocks help level the load. To help prevent "bottoming out" under heavy loads, these standard rear shock absorbers work to level El Camino at any load up to the maximum rating. The air valve is located inside the fuel filler door for convenient inflating and deflating.



A tough record to beat. 94.0% of all Chevy Light-, Medium-, Heavy-Duty trucks and commercial vans in the ten most recent years recorded were still on the job. (Based on R. L. Polk & Co. model year registration statistics through July 1, 1980. 1981 statistics not available at time of printing.)



POWER TEAMS

ENGINES WITH LIGHT-DUTY EMISSIONS FOR ALL STATES EXCEPT CALIFORNIA

Displacement—Liter (Cu. In.)	3.8L (229) V6	4.4L (267) V8	5.0L (305) V8	3.8L (231) V6	5.0L (305) V8
Engine Ordering Code	LC3(A)	LC9(B)	LG4(B)	LD5(C)	LG4(B)
Bore & Stroke	3.7 x 3.48	3.5 x 3.48	3.7 x 3.48	3.8 x 3.4	3.7 x 3.48
Compression Ratio	8.6 to 1	8.3 to 1	8.6 to 1	8.0 to 1	8.6 to 1
SAE Net Horsepower @ RPM	110 @ 4200	115 @ 4000	150 @ 3800	110 @ 3800	150 @ 3800
SAE Net Torque (lb.-ft.) @ RPM	170 @ 2000	200 @ 2400	240 @ 2400	190 @ 1600	240 @ 2400

OPTIONAL V6 OR V8 ENGINE REQUIRED FOR REGISTRATION IN THE STATE OF CALIFORNIA. (A) Produced by GM-Chevrolet Motor Division. (B) Produced by GM-Chevrolet Motor Division and GM of Canada. (C) Produced by GM-Buick Motor Division.

ENGINES WITH LIGHT-DUTY EMISSIONS FOR CALIFORNIA ONLY

COLORS

Select from 5 new exterior colors, 12 choices in all.

White

Silver Metallic

Light Blue Metallic

Dark Blue Metallic

Light Brown Metallic

New Charcoal Metallic

Light Jade Metallic

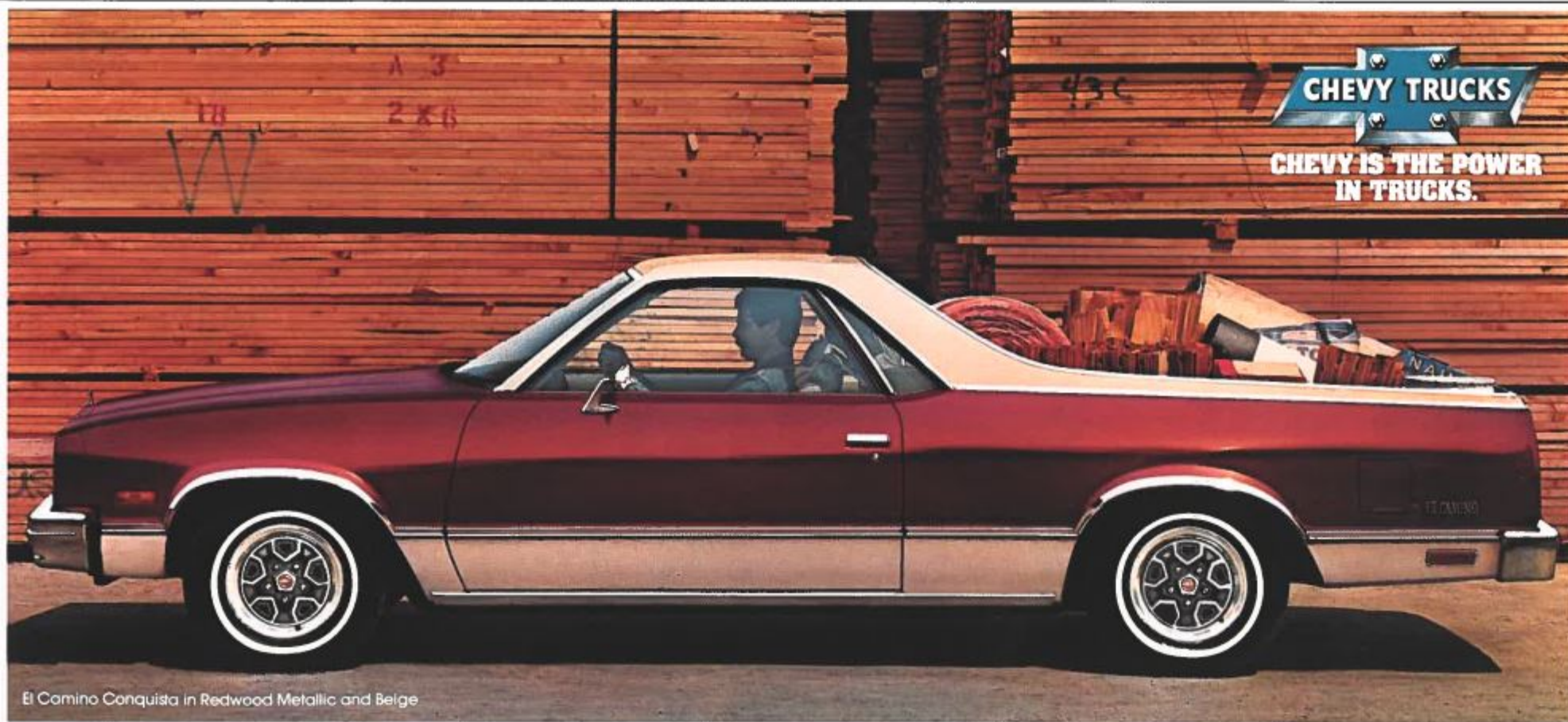
New Dark Jade Metallic

New Redwood Metallic

New Silver Gray

New Lt. Redwood Metallic

Beige



El Camino Conquista in Redwood Metallic and Beige