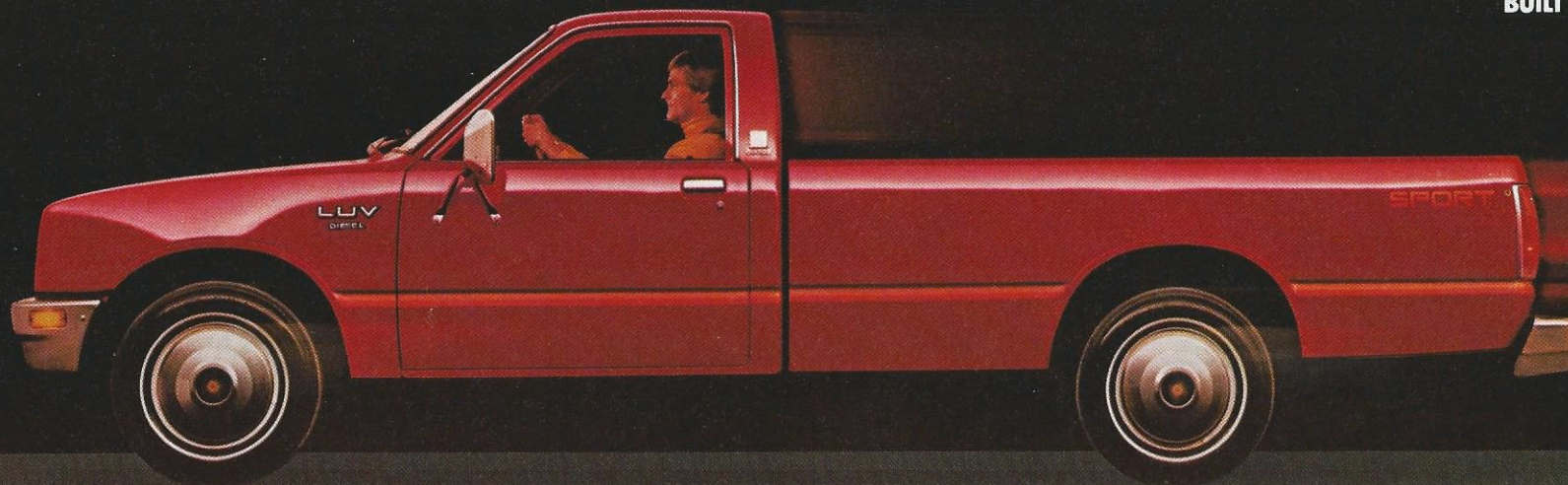


NEW LUV DIESEL HAS IT ALL



BUILT FOR ECONOMY.



2WD LUV Diesel with 7½' box



4WD LUV Diesel with 6' box

See reverse side for information and specifications.

NEW 2.2 LITER DIESEL NOW AVAILABLE IN ALL CHEVY LUVS SERIES 11.

That's right. Now you can get diesel power, diesel efficiency and diesel economy in all model LUVs, both 2- and 4-wheel-drive. There are some other big pluses, too. Like a hefty SAE net torque rating of 93 lb.-ft. at 2200 RPMs. And LUV Diesel's Quick-On system which means the engine is ready to start in just 3½ seconds or less. Add all that to these other LUV Diesel features, and you'll agree, "LUV Diesel has it all."

NEW 5-SPEED MANUAL TRANSMISSION STANDARD ON 2WD LUV DIESEL MODELS.

This fully synchronized transmission with overdrive in fifth gear coupled to a 3.73 rear axle ratio in 2WD models helps you get a lot out of your diesel. Just look at the mileage and the driving range story!

LUV DIESEL 2WD

44

EST.
HWY.

32

EPA EST.
MPG (CITY)

UNBEATEN DRIVING RANGE.

The new LUV Diesel's long wheelbase 2WD model's estimated driving range is **611** miles. Estimated highway range, 840 miles. You can't beat that in any small pickup.

Use estimated MPG for comparisons. Your mileage and range may differ depending on speed, distance, weather. Mileage and range will be less in heavy city traffic. Actual highway mileage and range lower. Range is obtained by multiplying the 19.1-gallon fuel tank capacity offered on long wheelbase LUV by the EPA estimates. Not available in California.

UNBEATEN 4-WHEEL-DRIVE MILEAGE.

No pickup in America offers better 4WD mileage. Which means now you can get both four-wheel-drive traction *and* sensational fuel economy.

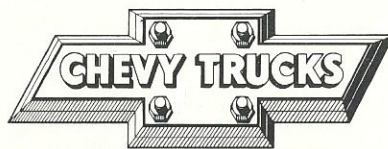
LUV DIESEL 4WD

35

EST.
HWY.

28

EPA EST.
MPG (CITY)



BUILT FOR ECONOMY.

UNBEATEN PAYLOAD AND CARGO BOX LENGTH.

LUV Diesel's 7½-ft. cargo box on the 2WD long wheelbase model is as long as you can get on any small-size pickup. And this model offers a whopping 1690-lb. payload capacity. Payload includes passengers, equipment and cargo.

LUV DIESEL ENGINE SPECIFICATIONS

Type	L-4, OHV
Displacement	2.2L/136.6 cu. in.
Bore and Stroke	3.46 x 3.62 in.
Compression Ratio	21 to 1
SAE Net Horsepower	58 @ 4300 RPM
SAE Net Torque (lb.-ft.)	93 @ 2200 RPM

LUV DIESEL POWER TEAMS

49 STATES — LUV DIESEL NOT AVAILABLE IN CALIFORNIA.			
ENGINE	TRANSMISSION	REAR AXLE CAPACITY	REAR AXLE RATIO
2.2 Liter (136.6 Cu. In.) 4-cyl. Diesel	5-Speed Manual Overdrive (Std. 2WD)	3500 lb.	3.73 2WD
	4-Speed Manual (Std. 4WD)		4.10 4WD

Chevrolet LUV engines are produced by Isuzu Motors Limited, Japan.