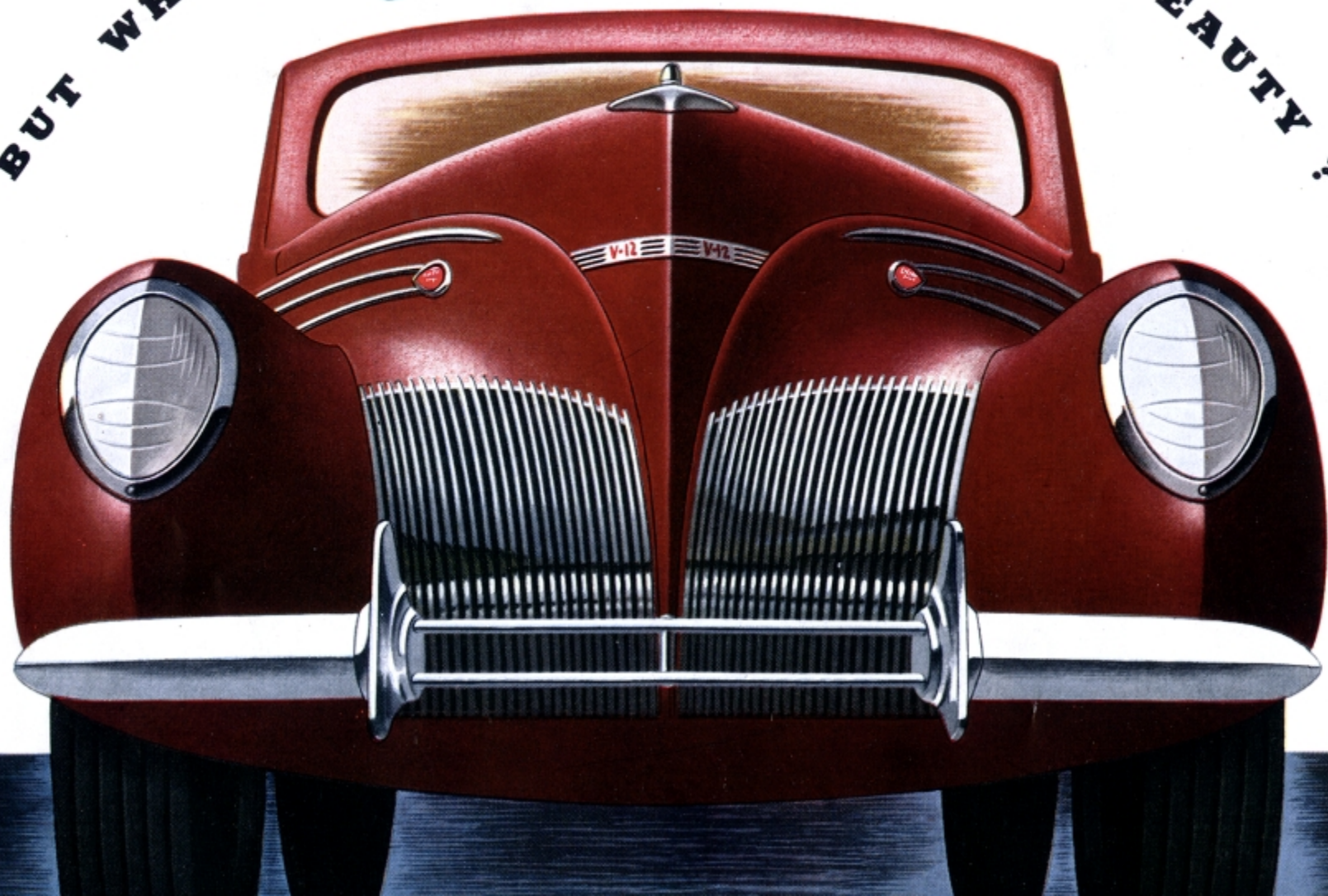
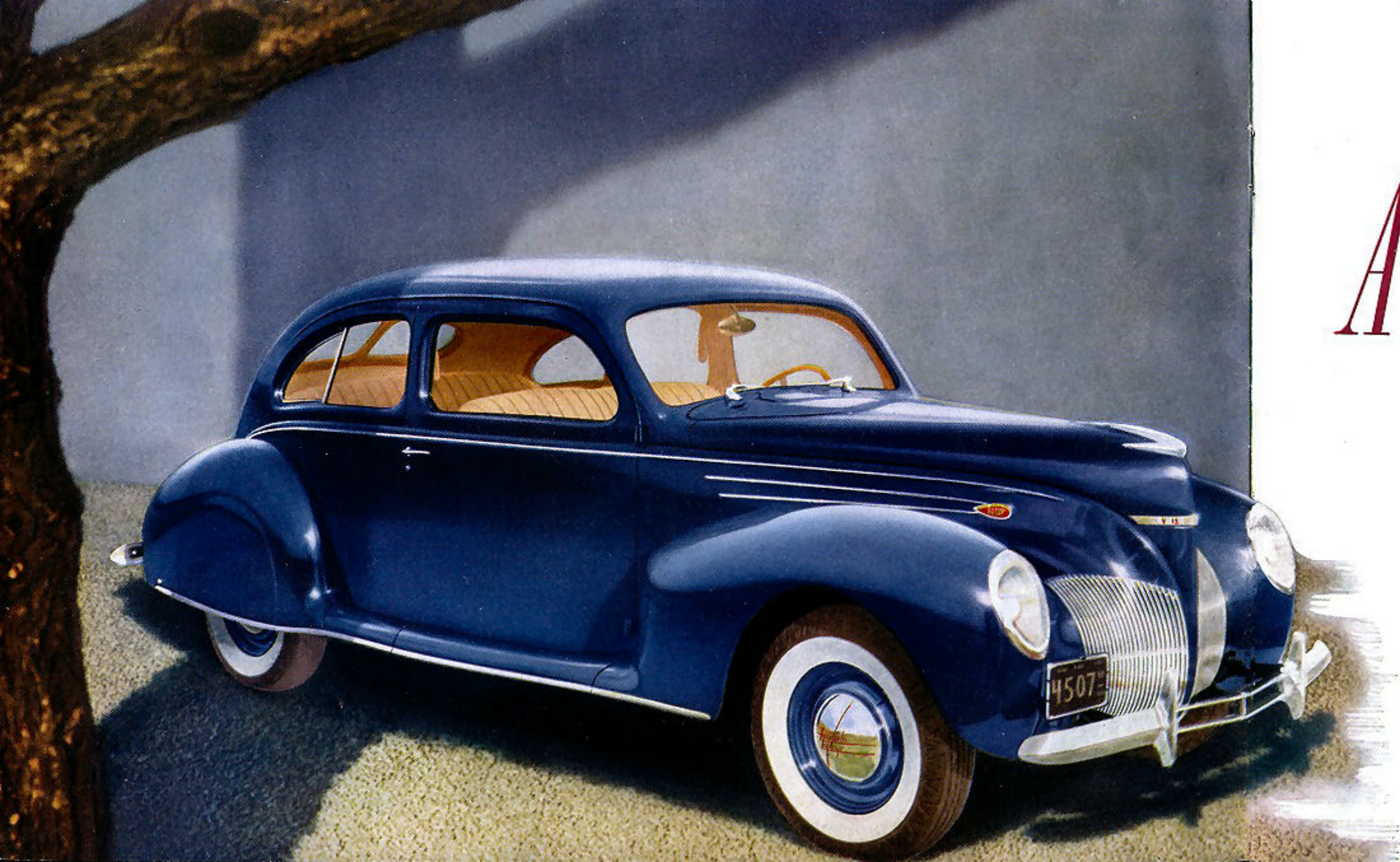


BUT WHAT'S BENEATH ITS OUTWARD BEAUTY?

Lincoln-Zephyr V-12





A

UNIQUE COMBINATION OF FEATURES THAT MAKES
THIS THE ONLY CAR OF ITS KIND AT ANY PRICE!

This year sees the Lincoln-Zephyr more beautiful than ever before. Its graceful streamlined design represents a skilful blending of function and form. This car is the acknowledged style leader of the automobile world! ¶ But style alone does not set a car apart as this car is set apart. What lies *beneath* its outward beauty? Why is the 1939 Lincoln-Zephyr *still* unique? ¶ It is because the distinctive combination of features in the Lincoln-Zephyr is *not matched in any car, at any price.* ¶ It is because this car is as modern in construction and in *every* way as in its streamlined appearance!