

NEW

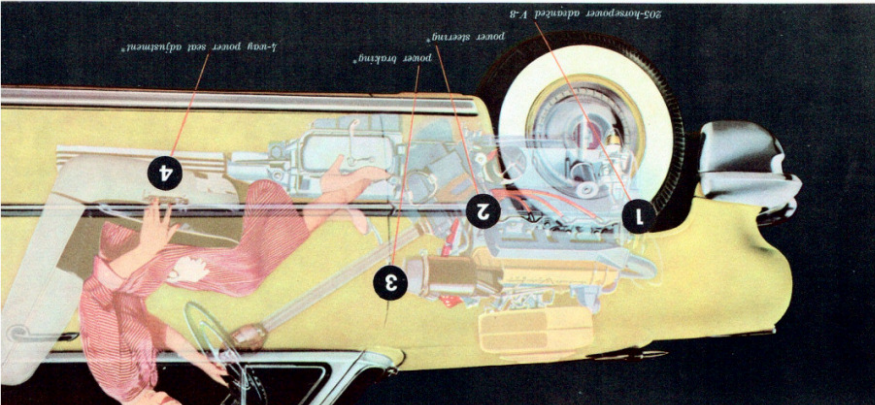
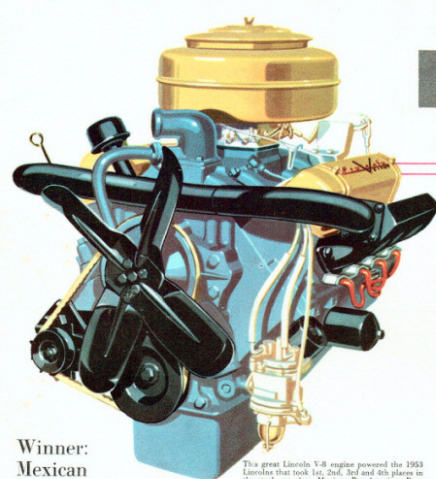
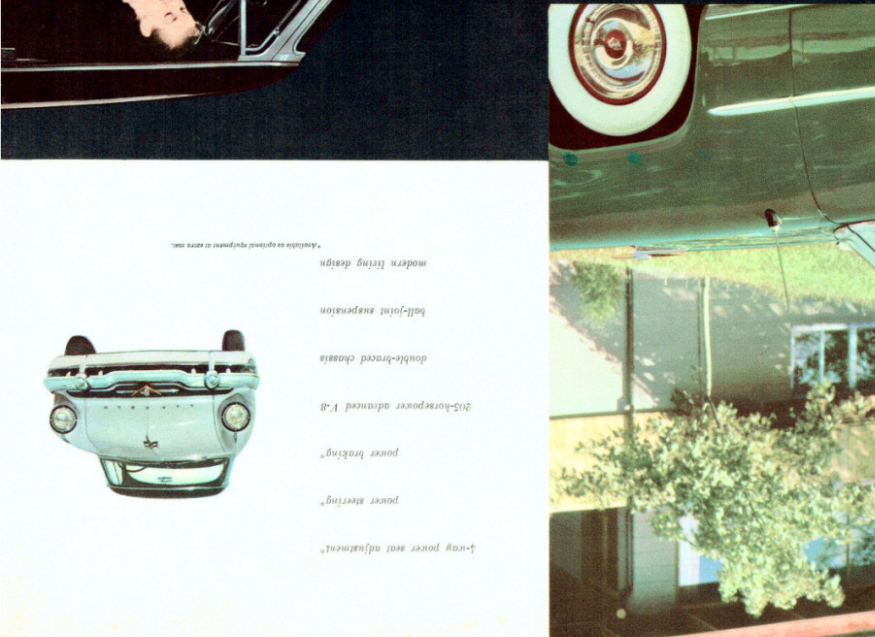
# LINCOLN

the Cosmopolitan  
—the Capri

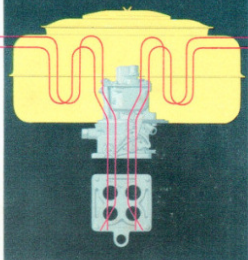


Powered for modern motoring

# POWERED TO LEAVE THE PAST FAR BEHIND

[illegible][illegible]

full 205 horsepower



Advanced by the development of new high-lift cams, introduction of a new precision-type four-barrel carburetor, improved manifolds, and new exhaust system, the Lincoln V-8 engine now delivers a full 205 horsepower. The result is faster acceleration, smoother operation, and great reserve power.

backed by unmatched safety features

NEW **LINCOLN** the Cosmopolitan  
—the Capri



**Powered** for modern motoring

engineering description of the advanced Lincoln Cosmopolitan and Capri  
engine specifications

[illegible]

## chassis specifications

**DIMENSIONS:** Wheelbase, 123 in. Overall length, 160 in. Overall width, 76 in. Ground clearance, 6.6 in. Tread, 58.3 in., both front and rear.

**FRAME:** Extra-rigid, heavy steel, cold-rolled and welded, X-member construction with K reinforcement and 3 cross-members. "Customized" front end with 16,000-lb. frame and additional reinforcement for extra body support.

**BODIES:** All-steel, heavily reinforced with welded steel floor. Insulated with glass fiber pads and other materials against heat, cold, noise, and vibration. Body built in compartments with scissor-type hinges and counter-balanced lid for easy opening. Spare tire and wheel mounted at right of compartment for greater accessibility.

**WHEEL SUSPENSION:** Independent front-wheel drive with 10-spline shaft, 28-spline axle. Telescopic-type hydraulic shock absorbers.

permanently lubricated. Full-length water jackets for efficient cooling and better fuel economy. Automatic by-pass thermostat for quick warm-up. Low-speed, 4-blade fan. Highly efficient radiator. 24-cu. ft. capacity, (with heater unit) 24.5 cu. ft. fuel tank. 100-hp. 2700-rpm. 4-cyl. cast-iron, overhead-valve carburetor of simplified design. Concentric oil-bath air cleaner. Automatic idling control. Automatic choke with manifold-mounted carburetor. 10-inch-dia. diaphragm-type fuel pump with 100% reserve. 1000-rpm. 100-mph speed windshield wiper operation. Fuel tank capacity, 20 gal.

**ELECTRICAL** 6-cyl. 63-amp, 110-ampere, 100-watt, 100-cu. ft. 60-ampere generator with automatic current and voltage control. Ratchet-type starter with 16.9 to 1 cranking ratio. High-speed, single breaker-arm distributor with 100% reserve. Vacuum spark control. Vented contact points.

mounted inside springs. Rear springs are longitudinal coil-overs. Type with full-length liners which require no lubrication. Telescopic rear shocks are "sea-lee" mounted to cushion both shocks and sideways.

**HYDRA-MATIC TRANSMISSION:** Dual range, four-speed fully automatic planetary gear set operating on a torque converter with highly efficient fluid coupling. No clutch pedal. Driver selector mounted on steering column. Ratios: 1st—3.82; 2nd—2.53; 3rd—1.45; 4th—1.00; reverse—3.30. Oil—30. Oil filter—standard.

**DRIVE:** Hotchkiss drive with tubular propeller shaft. Semi-floating rear axle with hypoid ring gear and pinion. Rear axle gear ratio: 3.31 to 1.

*All Lincoln cars available with power steering, power braking, 4-way power seat, 2-way power windows, 2-way power door locks, radio, and white side-wall tires of extra cut.*

power steering

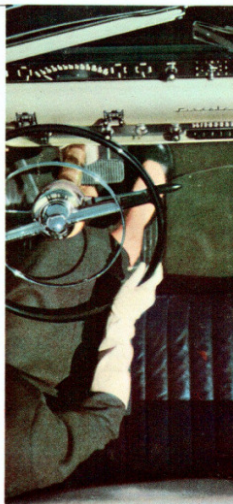
Power steering without the loss of vital wheel "feel." That's the value of this new extra-cost feature as Lincoln engineers have developed it. It makes parking only a matter of steering accuracy, and wheel shock only a memory of earlier driving days, so easy is its operation.

power braking

For easier, surer highway braking and toe-touch stopping ease in heavy traffic, Lincoln engineers have developed power braking with a human touch! Advanced design of this extra cost power booster relieves your muscles of braking effort, yet affords the positive control so essential to true driving security and comfort.

4-way power  
seat adjustment

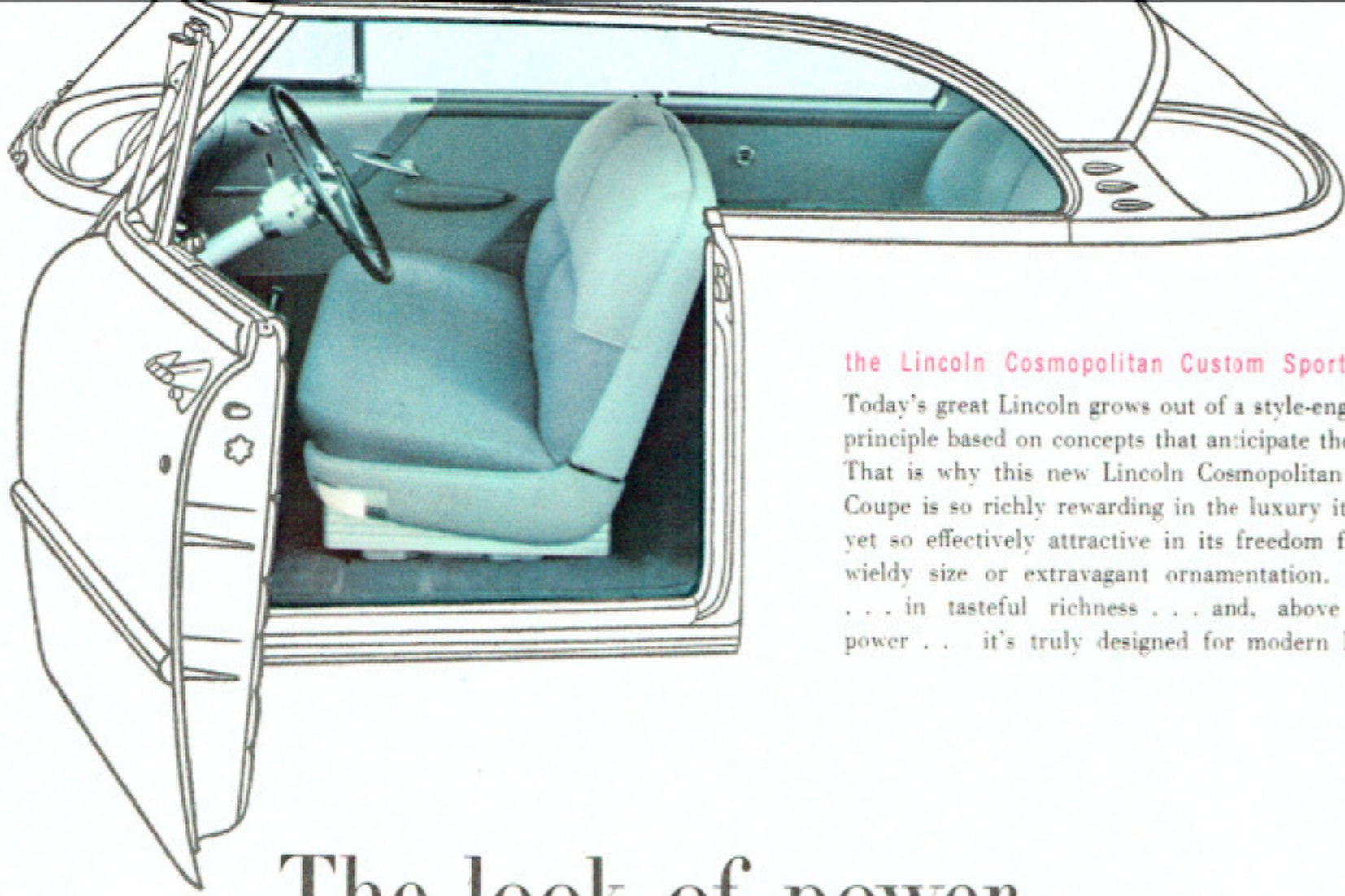
Now your new Lincoln can be driver-fitted to every member of your family who drives—thanks to Lincoln's exclusive four-way power seat adjustment. A touch of one lever moves the seat forward or back, automatically. A second governs up and down elevation—and also alters the seating angle for absolutely perfect reach of every driving control. Extra cost, but an extra safety and convenience value to be specially prized in a car for family use.



THESE SPECIFICATIONS WERE IN EFFECT AT THE TIME THIS FOLDER WAS APPROVED FOR PRINTING. LINCOLN DIVISION OF FORD MOTOR CO., DETROIT, MICH., WHOSE POLICY IS ONE OF CONTINUOUS IMPROVEMENT, RESERVES THE RIGHT, HOWEVER, TO DISCONTINUE OR CHANGE AT ANY TIME, SPECIFICATIONS, DESIGN, OR PRICES WITHOUT INCURRING ANY OBLIGATION.

LITHO IN U.S.A. 2-53



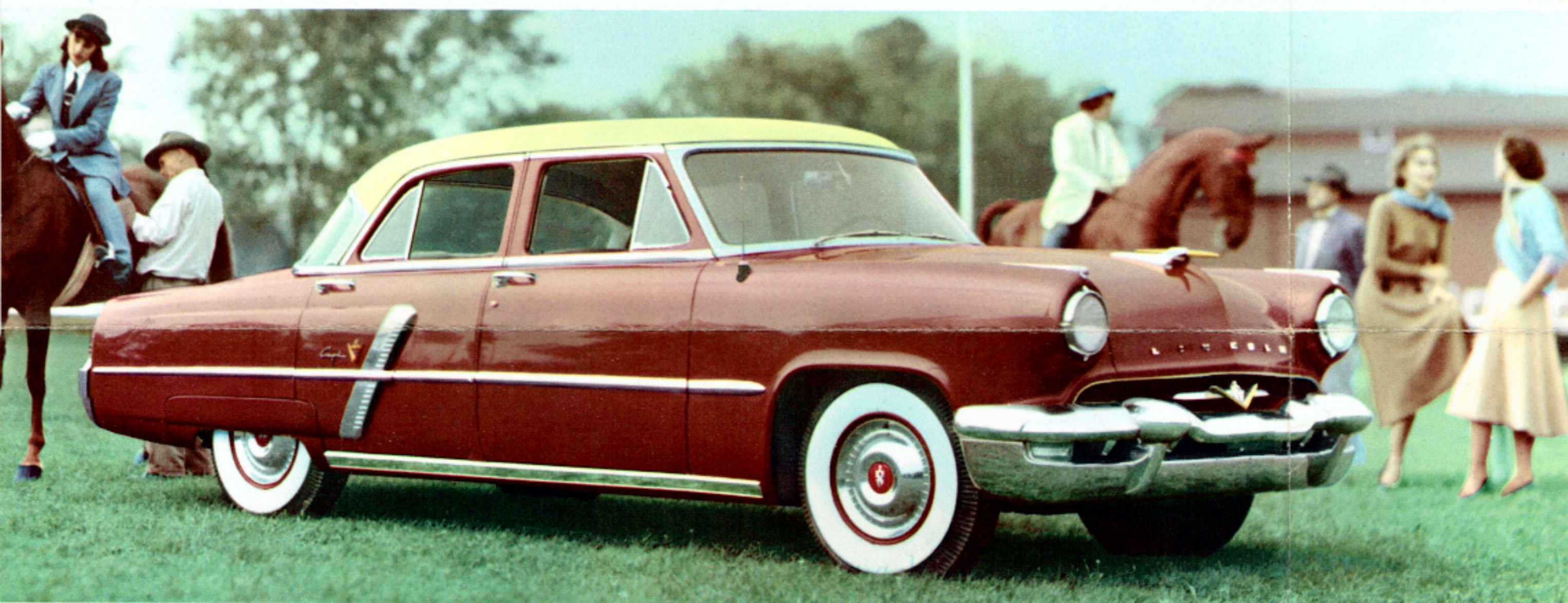
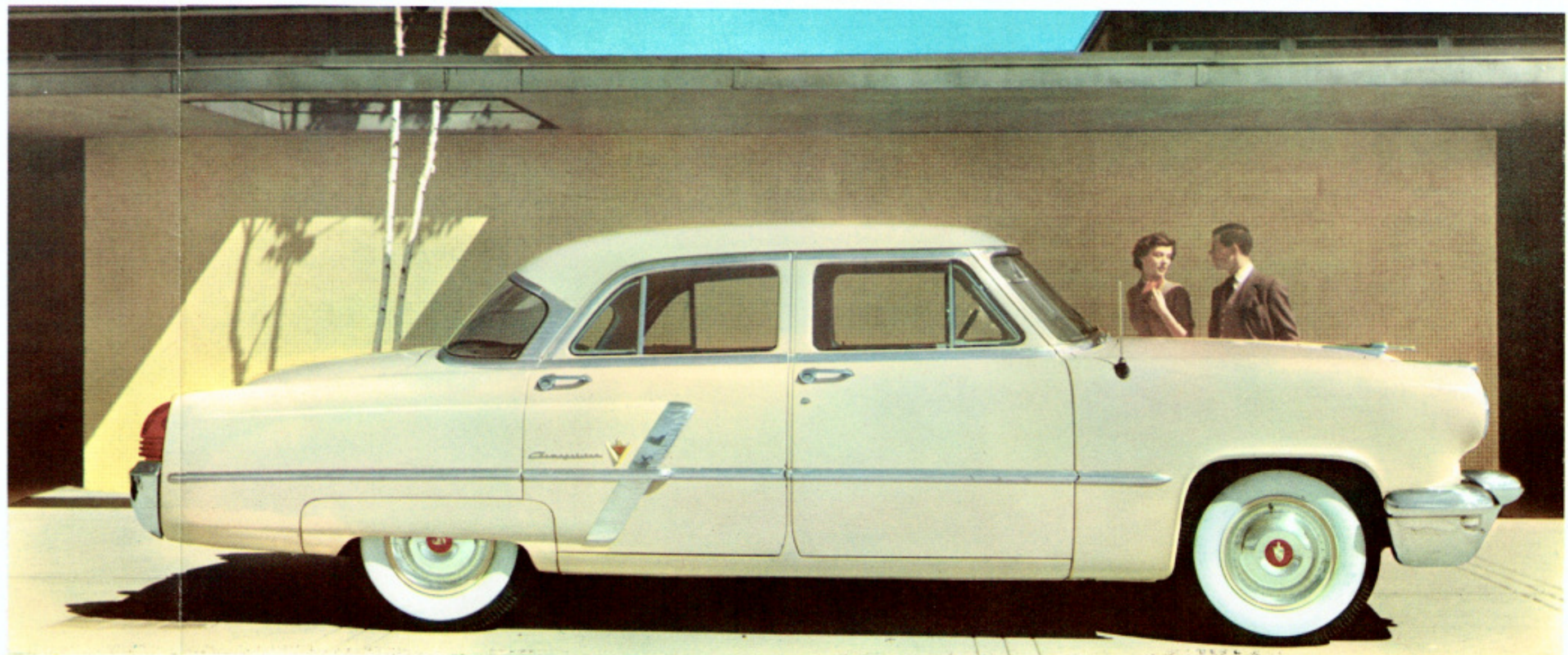
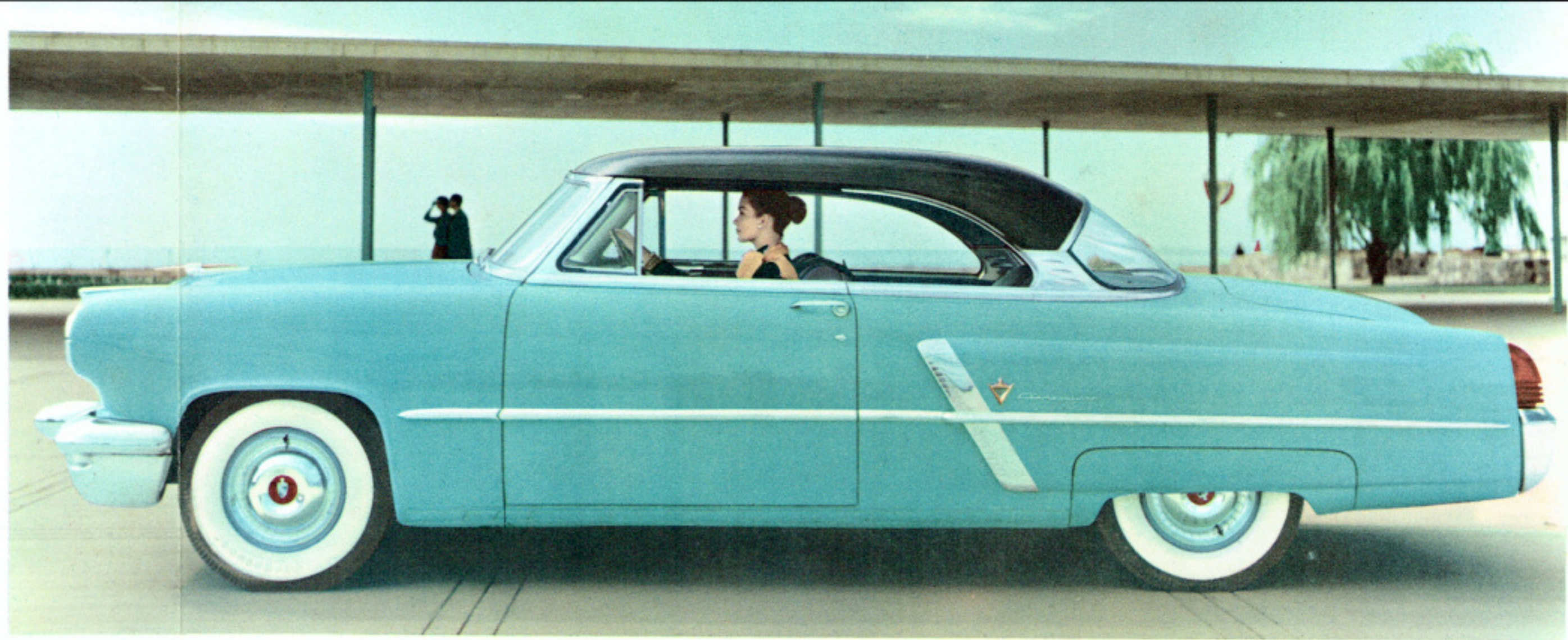


**the Lincoln Cosmopolitan Custom Sport Coupe**  
Today's great Lincoln grows out of a style-engineering principle based on concepts that anticipate the future. That is why this new Lincoln Cosmopolitan Custom Coupe is so richly rewarding in the luxury it affords, yet so effectively attractive in its freedom from unwieldy size or extravagant ornamentation. In style . . . in tasteful richness . . . and, above all, in power . . . it's truly designed for modern living.

The look of power ...

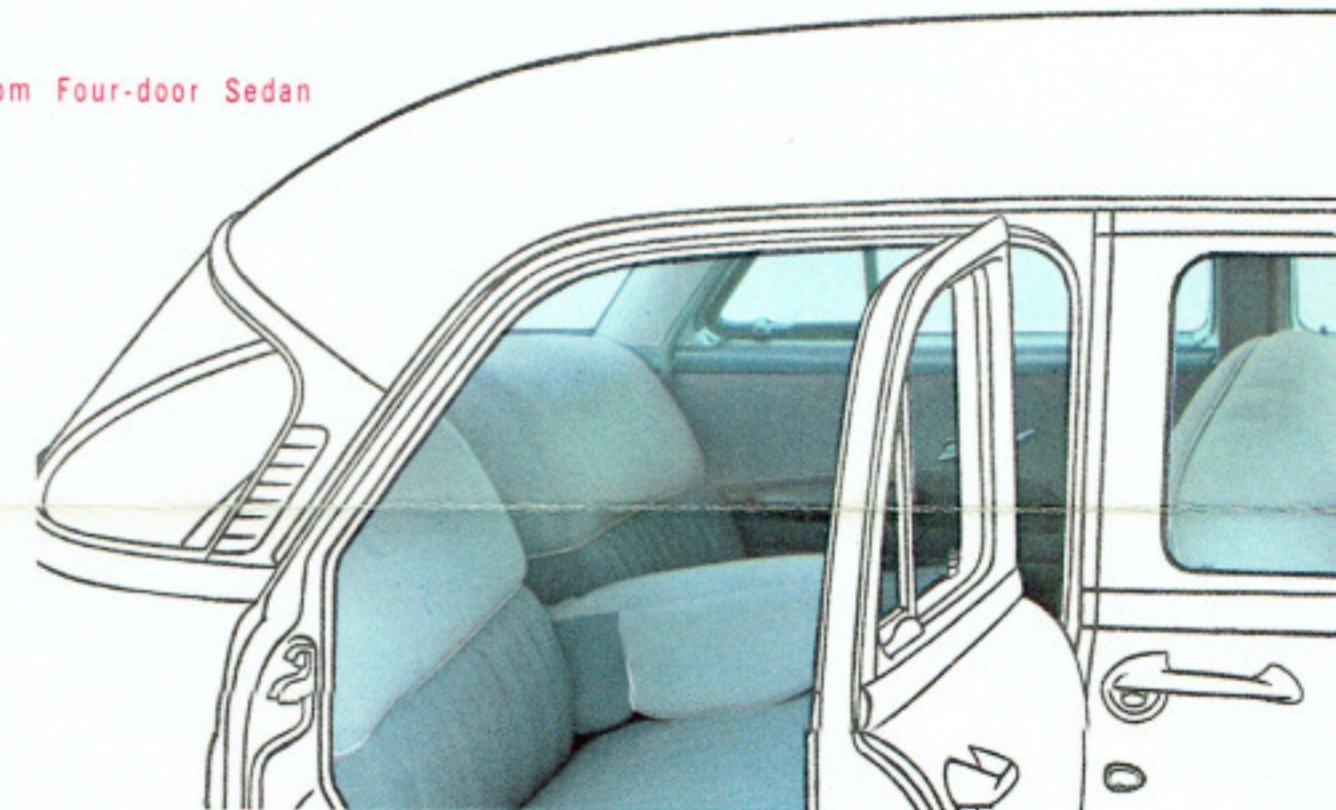


**the Lincoln Cosmopolitan Custom Four-door Sedan**  
This superb Lincoln model is counterpart on wheels to today's most advanced modern homes. And its contemporary qualities of graciousness, convenience and adaptability are matched inside as well as out. You find rare beauty without ostentation, great visibility with the functional beauty of perfectly placed and proportioned driving instruments and controls. Most of all, you'll admire the suitability of its style and appointments to family use. For here is a sedan to win the delight of every member of the family, in every role today's motor car is called upon to play.

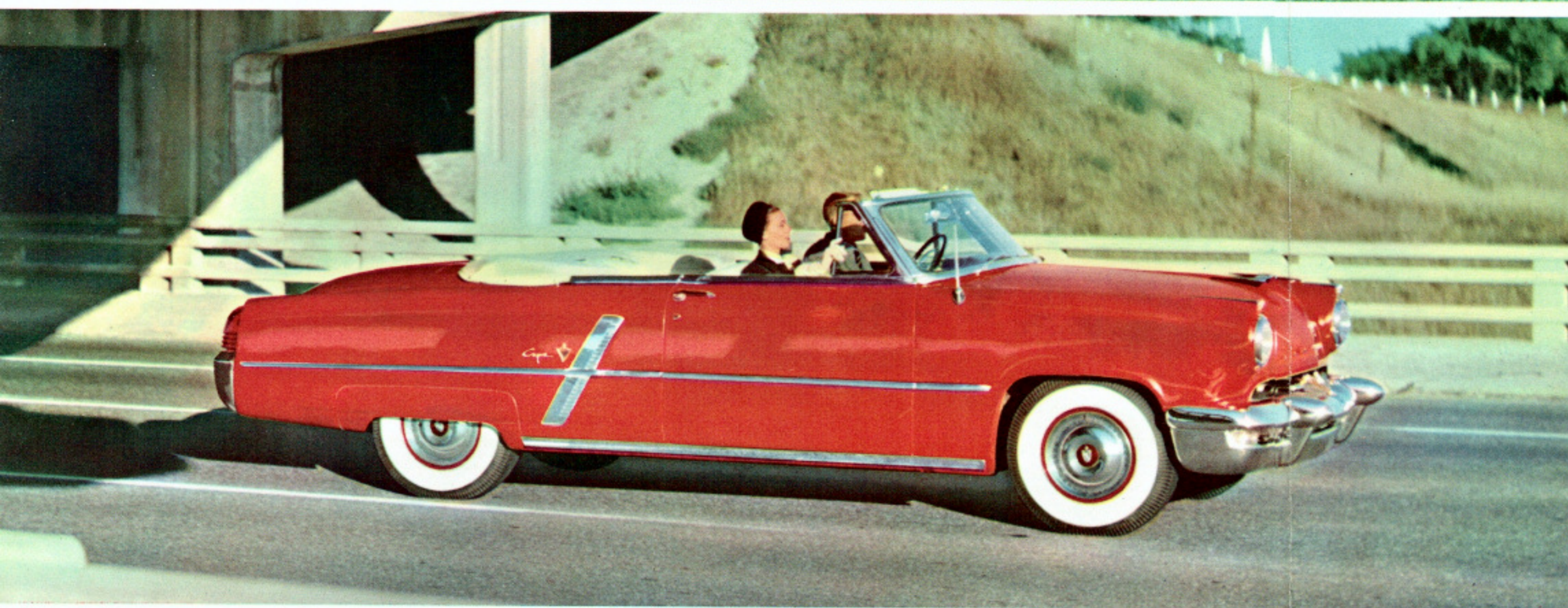


**the Lincoln Capri Special Custom Four-door Sedan**

Against the varied backgrounds of today, this Lincoln model reveals a tuned-to-the-times appropriateness of look and line. Here are the qualities that bespeak distinction—original design, unmatched performance, and the rare graciousness of elegant simplicity. Inside, too, Lincoln stylists have created new interiors for today. In addition to choice broadcloths and varied textured nylon weaves, you may also select from combinations of nylon and genuine leathers. Or, at extra cost, you may enjoy the option of complete leather interiors in distinctively new, contrasting tones.



... the touch of casual magnificence ...



**the Lincoln Capri Special Custom Convertible**

Star in its own light, this Lincoln Capri Special Custom Convertible is master of quick changes, too. A touch of a button raises the top, another the windows. And then, with all nature closed out, its smart interiors take over—in all of nature's harmonizing colors. Available in a choice of contrasting genuine leather combinations of rich colors, or contrasting leathers and fabrics. Truly, a magic carpet to golden hours, is this distinctive convertible—by Lincoln.



**the Lincoln Capri Special Custom Coupe**

In this contemporary interpretation of modern living on wheels—the Lincoln Capri Special Custom Coupe—you find the perfect blend of the world's most advanced styling skill. Here sparkling metallic surfaces contrast with rich fabrics and genuine leathers . . . highlight the wide-open feel of convertible informality in a closed automobile . . . provide, in the fullest sense, the perfect casual air of modern living at its best. Here, under the arched sweep of a protective steel roof, is all the dash and appeal of an open sports car. For at the touch of convenient controls, all side windows lower, and, without conflicting center post, you're free to gaze, unhindered, at all outdoors. Available at extra cost are true convertible interiors, too, in contrasting natural leathers!



POWERED TO LEAVE THE PAST FAR BEHIND