

1979 Thunderbird



Town Landau. High-flying luxury.

Ford's era of the personal automobile began in 1954, with the debut of an exciting, new kind of car — Thunderbird. Its name created images of glamour, excitement and distinction. Its high-flying style gave wing to soaring pride of ownership. And to this day Thunderbird remains steadfastly true to the traditional values of spirit, design, luxury and comfort. One luxuriously irresistible example of this is the Thunderbird Town Landau for 1979.

One look at Town Landau and you know you are in the presence of one of the world's distinguished personal luxury cars. It appears here in Midnight Blue Metallic (3L).

The distinctive tiara-band roof, with its brushed aluminum wrapover applique, makes Town Landau easy to identify. Stylized script on the opera windows (C) and translucent, color-coordinated hood ornament (D) are other subtle symbols.

Other noticeable features from Town Landau's complete list of standards on the back cover are: unique accent stripes on the

upper bodyside, hood, grille opening panel, headlamp doors, fender louvers and deck lid. And accent painted cast aluminum wheels.

As does every 1979 Thunderbird, Town Landau powers you to your destination with a 5.0 litre (302 CID) 2V V-8 — or optional 5.8 litre (351 CID) 2V V-8 — and SelectShift automatic transmission. Town Landau also features an extended range fuel tank, which provides a generous capacity of about 102.3 (22.5 Imp. Gal.). Standard tank provides a capacity of 79.6 (17.5 Imp. Gal.) longer cruising range.

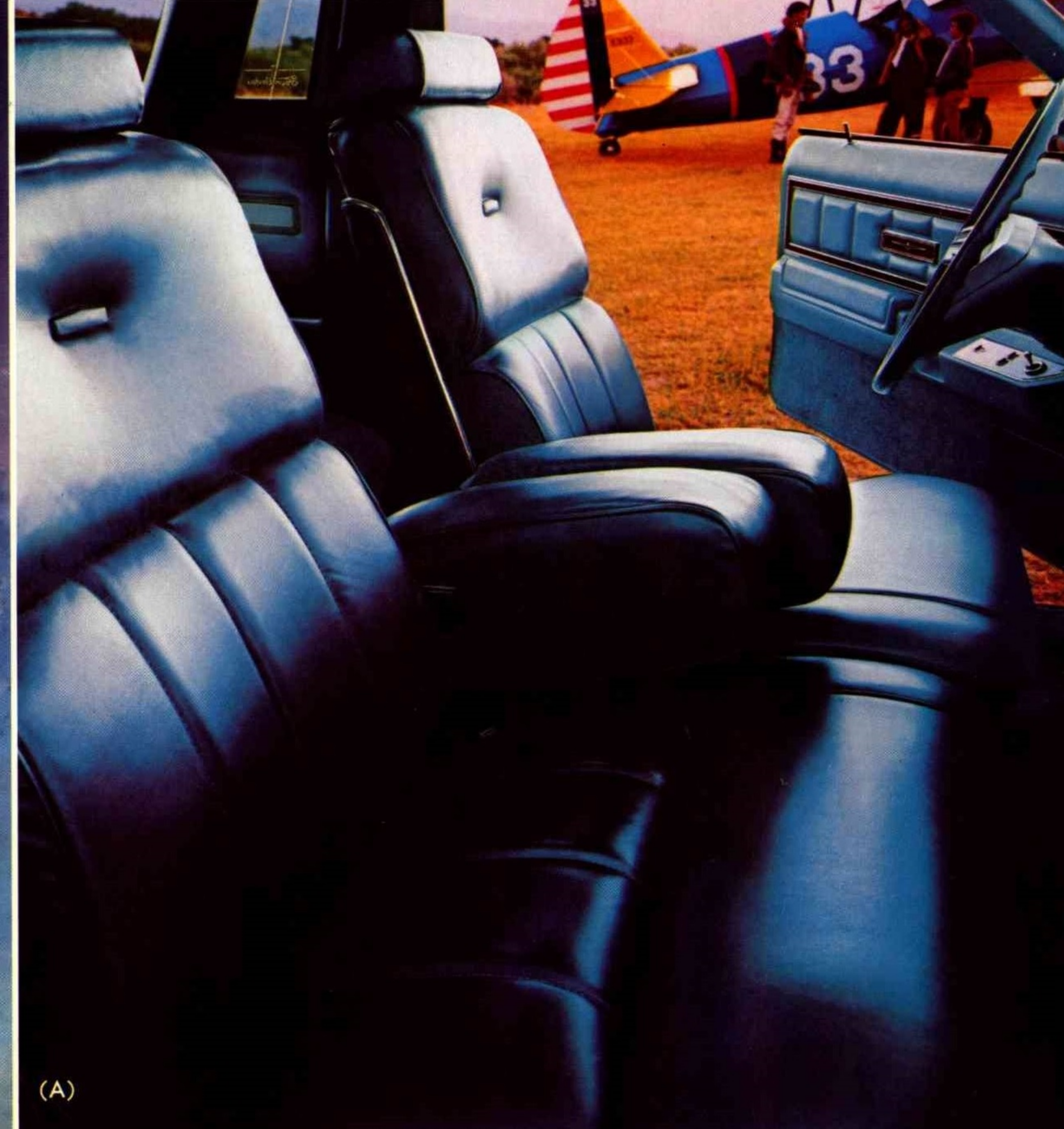
Upon entering Town Landau, you will be greeted by the wealth of comforts and conveniences included in the Interior Luxury Group: split bench seats (A), with 6-way power driver's seat, manual passenger recliner, fold-down centre armrests, automatic seat-back release, color-keyed deluxe belts and a pleasant chime that reminds you to buckle up. Choose yours with plush velour-cloth trim (see page 10), or with optional Ultra-Soft leather seating surfaces (A), shown in Blue (SB). High-gloss walnut woodtrane appliques on instrument panel (B) and luxury door trim panels. Luxury steering wheel. Day/date clock.

Illuminated passenger visor vanity mirror. 18-oz. luxury carpeting. Rear seat courtesy lamps. Luggage compartment trim. Also the Convenience and Light Groups described on page 12.

In addition, Town Landau caters to your driving pleasure with AM/FM stereo search radio, tilt steering wheel, manual control SelectAire Conditioner, power side windows and power lock group.

Town Landau may just be the personal luxury car you've been looking for. And when you can prove it to yourself so easily, with but one session at the controls, why resist? See your Ford dealer and take a test flight today.

Note: See Notable Standard Features, Measurements and color code reference on the back cover.
Some items shown are optional. See options list on pages 12-15.



(A)



(B)



(C)

(D)

Thunderbird. Ready for takeoff.

In its purest form, Thunderbird — as shown at far right in Black (1C) — has about it an unmistakable aura of elegance. Crisp, clean, classic lines distinctly highlighted by the wrapover roof. With the refined appearance of a new grille texture and bold, new taillamps as tasteful finishing touches.

And Thunderbird's inherent luxury continues inside, with deep-cushioned flight bench seat, deluxe soundproofing, AM radio, electric clock, 5.0 litre (302 CID) 2V V-8 engine, SelectShift automatic transmission, power steering and power front disc/rear drum brakes, to name a few. See back cover for the full list of standard luxuries.

The point is, when the basic design of an automobile is this luxurious, you need add nothing more than those special items you desire to tailor it to your particular tastes and needs.

The Thunderbird below — shown in Silver Metallic (1G) with Silver vinyl roof — wears the optional Exterior Decor Group to beautifully illustrate this point. Included are: two-piece vinyl roof, dual sport mirrors, dual accent paint stripes and styled road

wheels. Optional wide bright bodyside moldings have been added for a gleaming style accent.

There are, naturally, many other options with which you can make your Thunderbird uniquely yours. Check the wide variety of interior trims, shown on pages 10 and 11. And consult pages 12 through 15, for everything from a new AM/FM stereo radio with cassette tape player, to power moonroof, to illuminated entry system.

Take flight in a Thunderbird today. We think you'll find it has all the basic luxuries plus the down-to-earth price you've been looking for.

Note: See Notable Standard Features, Measurements and color code reference on the back cover. Some items shown are optional. See options list on pages 12-15.



Thunderbird with Exterior Decor Group
in Silver Metallic (1G) with Silver vinyl roof.

Thunderbird. It's the only way to fly.

From the original two-place personal automobile in 1955, to the current 6-passenger edition, Thunderbird has prevailed as a legendary standard of style and luxury in its class.

To be sure, others have echoed Thunderbird's spirit, design, luxury or comfort. But it is the masterful blending of these precious ingredients that makes Thunderbird the magnificent flying machine it is.

We invite you to compare Thunderbird. Enjoy its legendary free-flowing spirit and drawing room luxuries. We think you'll agree, it's the only way to fly.



Thunderbird in Black (1C).

Heritage. For the discerning collector.

Heritage is the most exclusive new Thunderbird you can own. And one which may become a collector's item in the future. Providing the classic styling and spirit which have made the name "Thunderbird" a legend, it also is built with distinctive custom touches.

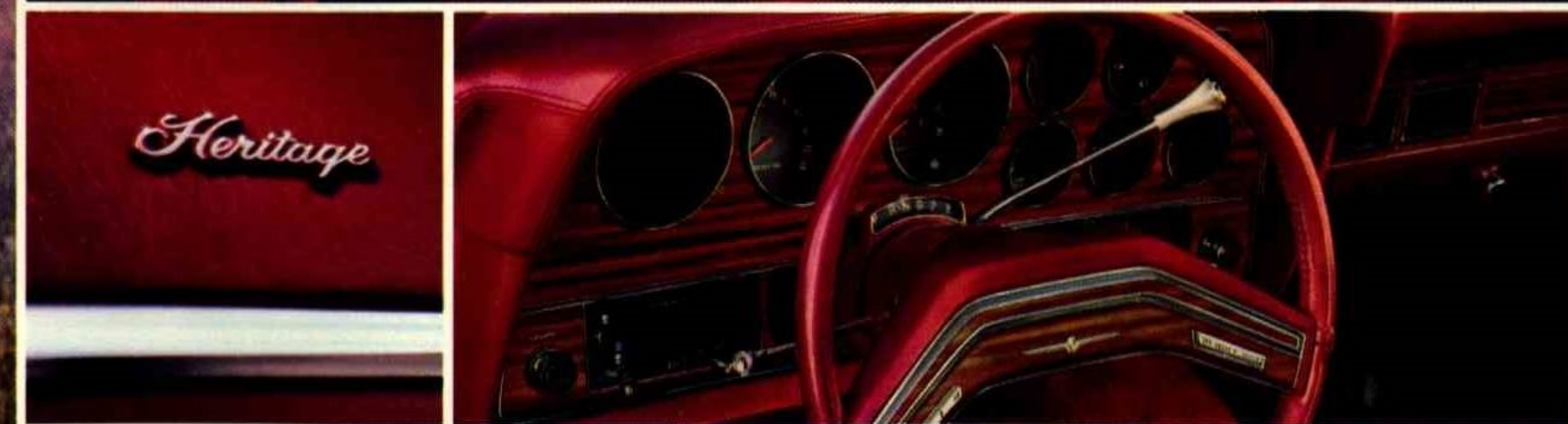
Exquisitely tailored seats. Elegant ebony woodtone appliques. Hand-stitched, leather-covered instrument panel padding. And a 22K gold-finish nameplate, to name just a few.

Heritage is available in exclusive Maroon or Light Medium Blue and comes equipped with virtually every comfort and convenience feature you could ask for.

Like SelectAire Conditioner, AM/FM stereo search radio, fingertip speed control and tilt steering wheel.

Heritage invites close personal inspection at your Ford Dealer's.

Note: See Notable Standard Features, Measurements and color code reference on the back cover. Some items shown are optional. See options list on pages 12-15.



Optional Equipment-Interior

As well appointed as the 1979 Thunderbird is to begin with, we realize there may be special features you will want to add to more precisely tailor your Thunderbird to your individual tastes and needs. The selection of optional equipment that follows is intended specifically for this purpose.

Audio

Ford offers a superb selection of radios and audio equipment for the Thunderbird of your choice. All are precision engineered and built to exacting Ford quality standards.

- ☐ AM/FM Monaural Radio. Single instrument panel speaker.
- ☐ AM/FM Stereo Radio.* Has stereo "on" light and 10 pushbutton choices (5 AM, 5 FM).
- (A) AM/FM Stereo Search Radio* seeks the first listenable station, or scans all, pausing for 8-second samples.†
- ☐ AM/FM Stereo Radio* with 8-Track Tape Player.
- (B) AM/FM Stereo Radio* with Cassette Tape Player.
- ☐ AM/FM Stereo Radio* with Quad 8-Track Tape Player.
- (C) 40-Channel Citizens' Band Radio. Remote control transceiver features: trunk-mounted chassis, power microphone with integral controls (which disconnects for hidden storage), automatic scan that finds active channels. System overrides radio through front speakers while sending or receiving. AM/FM/CB triband antenna included. Available with all factory-installed radios. Requires Department of Communications license to operate.
- ☐ Dual Rear Seat Speakers, with fader control, for all AM and AM/FM monaural radios.

*Dual speakers front and rear included.

Comfort

- ☐ Color-Keyed Deluxe Belts,† included in the Interior Decor and Luxury Groups.
- (D) SelectAire Conditioner with Automatic Temperature Control maintains temperature once you set it. SelectAire Conditioner with manual control† is also available.
- ☐ Tinted Glass† all-around reduces glare and heat from sun. Recommended with SelectAire Conditioner.
- ☐ Luxury Sound Insulation Package† blankets the passenger compartment with noise-nullifying material.

Convenience

- (E) Day/Date Clock tells day of week, date of month, a.m. or p.m. Standard on Town Landau.
- ☐ Convenience Group† includes: dual remote control mirrors (chrome), interval windshield wipers, trip odometer and automatic parking brake release. Included in Interior Luxury Group.

- ☐ Electric Rear Window Defroster includes 60 amp. alternator (70 amp. with SelectAire Conditioner).
- ☐ Extended Range Fuel Tank† provides an additional capacity of approximately 24.5 ℓ (5.4 Imp. Gal.). 79.6 ℓ (17.5 Imp. Gal.) standard.
- ☐ Sports Instrumentation Group. Standard on Heritage. Page 9.
- ☐ Light Group† includes: dual beam map light; lights under hood, trunk, instrument panel, in ashtray and glove box; "door ajar" warning lights and "headlights on" warning buzzer. Included in Interior Luxury Group.
- ☐ Interior Decor Group, described on page 11.
- ☐ Interior Luxury Group, described on pages 2 and 3.
- ☐ Left-Hand Remote Control Mirror (chrome). See page 7.
- ☐ Dual Sport Mirrors† (remote control and color-keyed) are included in Exterior and Sports Decor Groups. See pages 2, 4, 5, 6, 8 and 9.
- ☐ Illuminated Visor Vanity Mirror (passenger side) has variable intensity lamp. Included in Interior Luxury Group. Standard on Town Landau. Dual mirrors standard on Heritage.
- ☐ Automatic Seat Back Release† simplifies rear seat entry/exit.
- ☐ Seat Belt Warning Chime.† Signals a pleasant reminder to buckle up. Included in Interior Luxury Group.
- (F) Fingertip Speed Control automatically maintains the speed you set. Includes luxury steering wheel. Standard on Heritage.
- (G) Tilt Steering Wheel† adjusts up/down to make entry/exit easy and long trips less tiring.

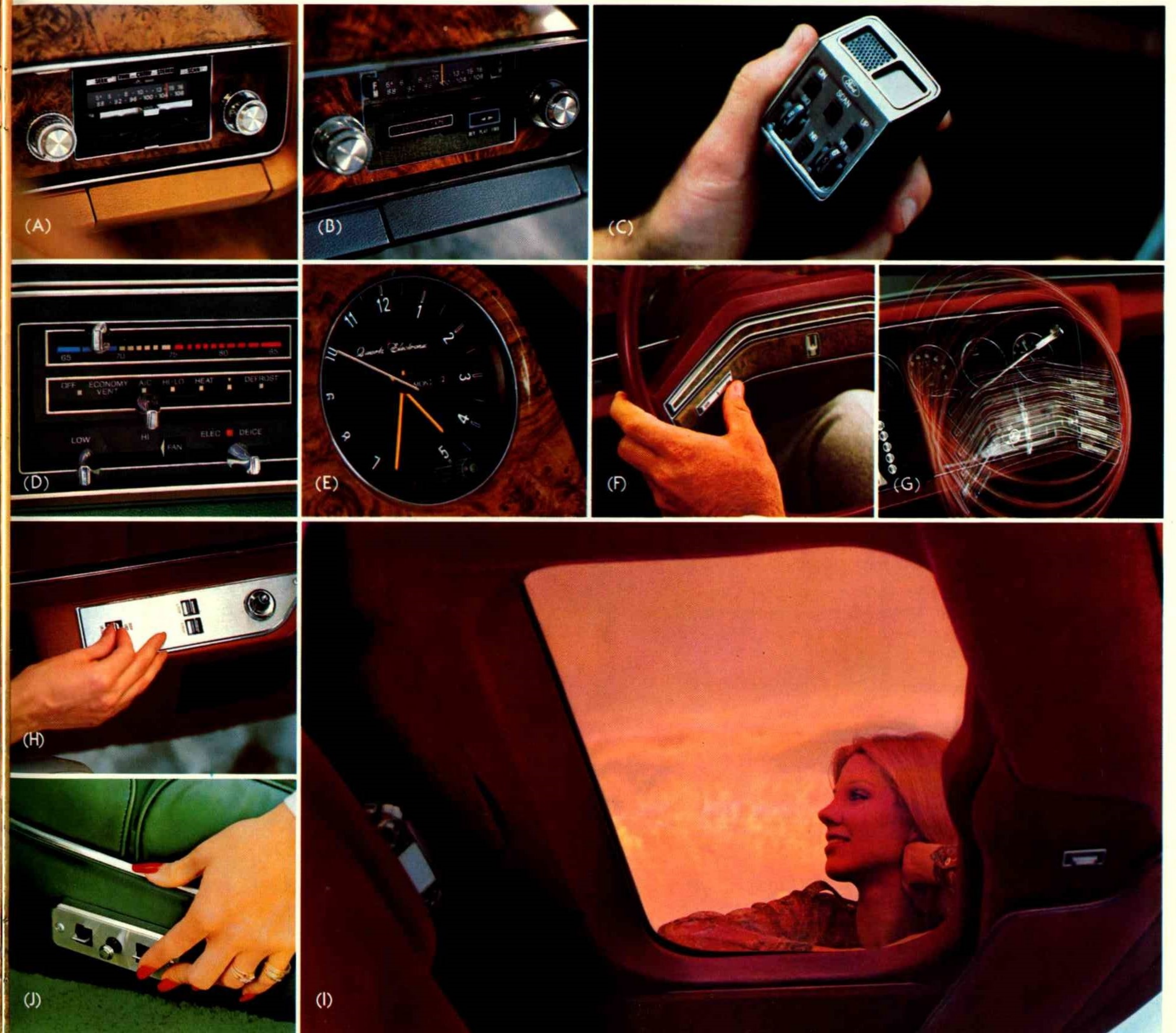
Interiors

Seats and trims, illustrated and described on pages 10 and 11.

Power Assists

- ☐ Power Antenna. Standard on Heritage.
- (H) Power Lock Group† provides electric door locks (controls in both door armrests), and remote control deck lid release (switch in glove box).
- (I) Power Moonroof treats you to the "open air" feeling. Features: one-finger operation, privacy screen and one-way tinted glass (available in Gold, Silver, Brown, Rose or Jade to coordinate with your color combination). Also see pages 5, 8 and 9.
- (J) 6-Way Power Driver's Seats,† infinitely adjustable.
- ☐ Power Side Windows.† Controls shown in "H" at right.

†Standard on Town Landau and Heritage.



Optional Equipment - Exterior

Appearance

- (A) T-Roof Convertible adds flare to your driving fun. Oven-tempered, tinted safety glass panels remove/replace easily. Also see page 4.
- ☐ Exterior Decor Group. See page 6.
 - ☐ Sports Decor Group. Shown and described on page 5.
 - ☐ Metallic Glow Paint gives your Thunderbird a "show car" sheen. Choose Medium Blue (3H), Burnt Orange (5N), Chamois (8W), Light Jade (7L), or Red Glow (2H).
 - ☐ Dual Accent Paint Stripes, included in Exterior and Sports Decor Groups. See pages 5 and 6.
 - ☐ Lower Tu-Tone Paint Treatment is yet another way to season Thunderbird to your taste, as shown on page 4. Selection includes: White with Dove Grey, Dark Red, Red Glow, Midnight Blue Metallic, Dark Jade Metallic, Chamois Glow, Burnt Orange Glow, or Dark Cordovan Metallic. Silver Metallic with Black, Dark Red, Red Glow, Midnight Blue Metallic, or Dark Cordovan Metallic. Dove Grey with Black, Dark Red, Red Glow, or Midnight Blue Metallic. Light Medium Blue with Midnight Blue Metallic. Pastel Chamois with Dark Cordovan Metallic, Red Glow, or Light Chamois. Dark Cordovan Metallic with Black. Light Chamois with Chamois Glow, or Burnt Orange Glow. Medium Blue Glow with Midnight Blue Metallic. Light Jade Glow with Dark Jade Metallic.
 - ☐ Two-Piece Vinyl Roof is included in Exterior and Sports Decor Groups, standard on Heritage. When T-Roof is ordered, vinyl covers rear of roof only. See pages 4, 5, 6, 8 and 9.

Performance

- ☐ Traction-Lok Differential Axle automatically transfers power to the wheel with best traction on slippery surfaces.
- ☐ Heavy-Duty Battery (77 amp.) provides extra power for cold weather starting and accessory operation.
- ☐ 5.8 litre (351 CID) 2V V-8 engine.
- ☐ Engine Block Immersion Heater plugs into electrical outlet to keep engine oil warm for easier cold-weather starting.
- ☐ Heavy-Duty Suspension includes heavy-duty front and rear shock absorbers and heavy-duty rear springs.

Protection

- ☐ Bumper Rub Strips† See all car illustrations.
- ☐ Mud and Stone Deflectors discourage wheel wash from marring or chipping finish on lower bodyside.

- (B) Illuminated Entry System provides light for nighttime convenience and security. Door lock and interior light up when handle is raised and stay lighted for about 25 seconds, or until ignition is turned on. Standard on Heritage.
- ☐ Front Cornering Lamps† turn on with directional signals to light your way through turns. See pages 3, 4, 6, 8 and 9.
 - ☐ Wide Bright Bodyside Moldings protect while they accent the stylish lines of your Thunderbird. Partial wheel lip moldings are included. See page 6.
 - ☐ Wide Vinyl-Insert Bodyside Molding†, with integral partial wheel lip moldings. See pages 2, 4, 5, 8 and 9.
 - ☐ Protection Group adds door edge guards, front and/or rear license plate frames, spare tire lock and color-keyed front and rear carpet floor mats.

(C) Consider the Ford Extended Service Plan. When you're considering options for your Thunderbird, give a thought to ordering Ford of Canada's Extended Service Plan. It's available to help protect you against rising service costs. And it's backed by Ford Motor Company of Canada, Limited and honoured by participating Ford and Mercury dealers throughout Canada (excluding Saskatchewan) and the United States.

(D) Inflatable Spare Tire allows more room for luggage when ordered, at no extra cost, to replace standard spare tire. Intended for temporary emergency use only. Luggage Compartment Trim also shown: includes carpeting, side lining boards and spare tire cover (not shown). Part of Interior Luxury Group, standard on Town Landau with 12-oz. cut-pile carpeting. Standard on Heritage with color-keyed 18 oz. cut-pile carpeting and molded deck lid liner.

Tires

A wide selection of 15-in. steel-belted radial ply black or white sidewall† tires (4) is available to suit your preference.

Wheel Covers/Wheels

- ☐ Wire Wheel Covers (4), shown on page 4.
- (E) Cast Aluminum Wheels (4) with accent paint† See pages 2, 3, 8 and 9.
- ☐ Styled Road Wheels (4), shown on pages 5 and 6.

†Standard on Town Landau and Heritage.



One magnificent flying machine. Thunderbird with T-Roof.

The sky-high exhilaration of an open-air coupe is yours to enjoy in any Thunderbird, with optional T-Roof Convertible. Featured here in Pastel Chamois (5P), with lower bodyside accent of Light Chamois (83) and Chamois vinyl roof, T-Roof is styled to turn the most ordinary drive into a high-flying adventure. (See page 14 for a list of the most popular Tu-Tone combinations.)

T-Roof's two oven-tempered tinted safety glass panels easily and quickly lift out to let in the sun and stars and fresh air. And, when a change in the weather forces an alteration in your flight plans, they slip securely back in, to provide the weatherproof advantages of a hardtop. (Dual vinyl pouches are provided for protective trunk storage when panels are not in use.)

And in addition to all the standard Thunderbird features (see back cover), there are countless ways in which you can tailor your T-Roof to help you look and feel even better. One way is with the interior that best suits your particular tastes and needs: flight bench seat, smartly trimmed in cloth and vinyl, or optional

all-vinyl. Optional bucket seats, with sporty striped cloth and vinyl, or solid color all-vinyl. There is also the optional Interior Decor Group which, among other amenities, brings you your choice of split bench seats fitted with waffle-weave knit cloth and vinyl, or all-vinyl. And bucket seats, dressed in cloth and vinyl, or all-vinyl upholstery. Or, you may opt for the elegance of the Interior Luxury Group, shown and described on pages 2 and 3. Among its many luxuries are split bench seats, meticulously tailored with your choice of plush velour cloth (page 10), or optional Ultra-Soft genuine leather seating surfaces (page 3). Looking at pages 10 and 11 will assist you in making the right decision on interiors. And on pages 12 through 15 you'll find the variety of options available to help make your T-Roof Thunderbird uniquely yours.

File your flight plan with your Ford dealer. Ask him to arrange a T-Roof test flight today. Or tomorrow, for sure.



Thunderbird T-Roof with Tu-Tone Pastel Chamois (5P)/Light Chamois (83), and Chamois vinyl roof.

Let your spirit soar. Thunderbird with Sports Decor Group.

Here is the very essence of traditional Thunderbird spirit. An automobile with sporty looks and personality, roominess and comfort. Dashing in appearance, this optional Sports Decor Group gives the contemporary Thunderbird a bold, individual look that compliments you.

The distinctive Sports Decor Group brings you such tasteful Chamois accents as: vinyl roof, deck lid straps and paint stripes on the hood, grille opening panel and fender louvers. Bodyside moldings and styled road wheels. Color-keyed remote control dual sport mirrors and blacked-out vertical grille bars provide subtle finishing touches.

Thunderbird with Sports Decor Group, also sporting optional power moonroof, is exhibited below in new Burnt Orange Glow (5N). The interior of your choice (see pages 10 and 11) is available in Chamois, as shown, or White. Other distinctive exterior/interior color combinations from which you may choose to create a sporty look that is expressly yours are: Black (1C) with Chamois interior; Polar White (9D) with Chamois or White;

Midnight Blue Metallic (3L) with Chamois; Dark Cordovan Metallic (8N) with Chamois or Cordovan; Dark Jade Metallic (46) with Chamois or Jade and Pastel Chamois (5P) with Chamois.

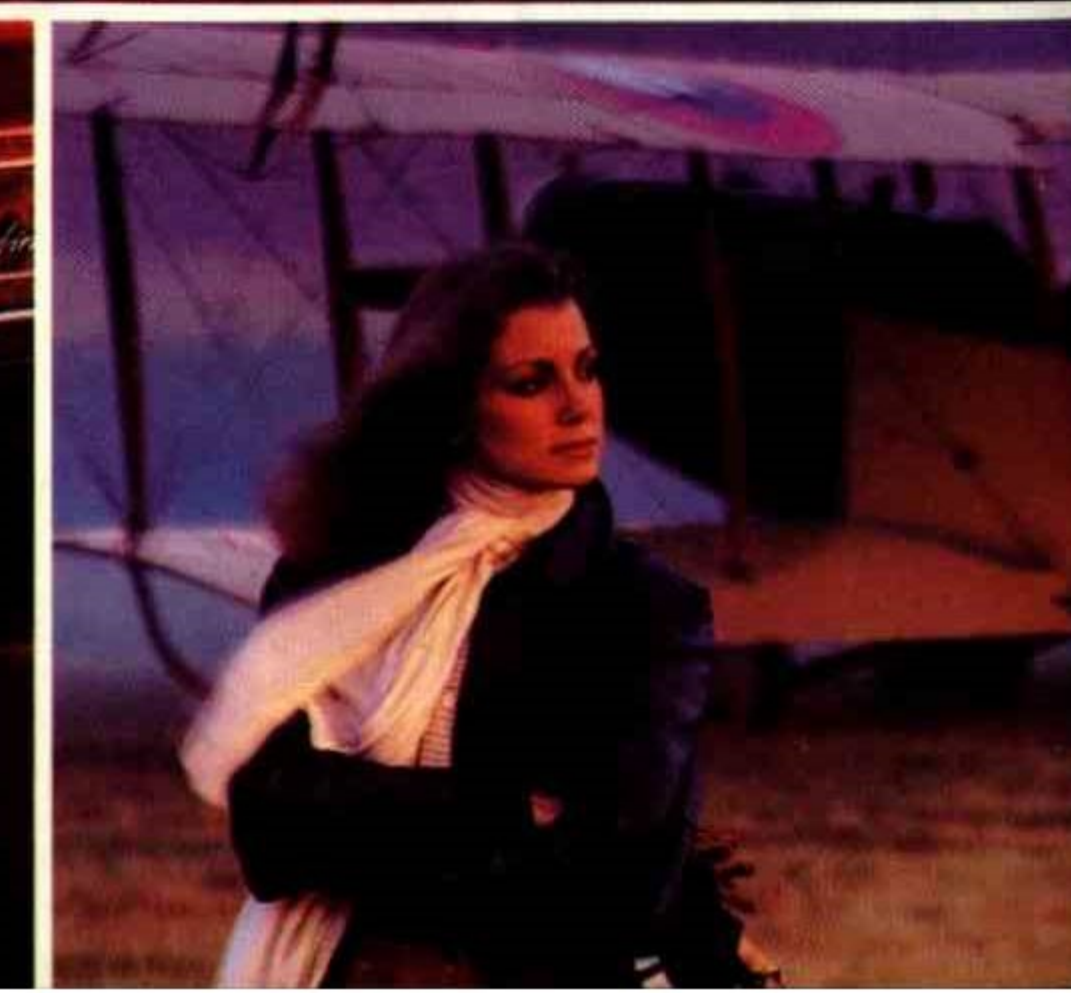
Think of it. An automobile with all these sporty accents, on top of the traditional Thunderbird standards: 5.0 litre (302 CID) 2V V-8 engine, SelectShift automatic transmission, power steering, power front disc/rear drum brakes (the full list is on the back cover). What value!

Thunderbird with Sports Decor Group is on the runway at your Ford Dealer's. Test it out and see for yourself how its sporty personality lets your spirit soar.

Note: See Notable Standard Features, Measurements and color code reference on the back cover. Some items shown are optional. See options list on pages 12-15.



Thunderbird with Sports Decor Group in Burnt Orange Glow (5N) with Chamois vinyl roof.



Interior luxury, Thunderbird style.

Whichever masterfully crafted interior you choose, it is comforting to know that you can furnish the "private world" of your Thunderbird with luxuries that cater to your personal tastes and needs.

And whichever interior suits you best, you may choose it in: Dove Grey, Dark Red, Blue, Jade, Chamois or Cordovan.

White is also offered on all-vinyl-trimmed split bench or bucket seats and on leather-trimmed split bench seats.

(A) Interior Luxury Group—split bench seats, with manual

center armrests and a manual passenger recliner.

(D) Bucket seats, a sporty option, with stylish multicolor striped cloth and vinyl in Cordovan (HF). Also offered in solid color basket-weave pattern all-vinyl. As shown in "E," bucket seats have two decorative buttons and come with floor shift and center console that has a padded cover, interior light and removable litter bin. (Shift is column-mounted when tilt steering wheel is ordered.)

(E) Interior Decor Group—bucket seats, smartly trimmed option



passenger recliner, are fitted with plush velour-cloth shown in Dark Red (RD). Or, you may opt for Ultra-Soft leather seating surfaces (see page 3), if you prefer. Read about the other elements of this optional group on pages 2 and 3.

(B) Thunderbird instrument panel is exquisitely accented with burl walnut woodtone appliques. Excellent visibility of—and access to—all instruments and controls make Thunderbird a real driver's car.

(C) Split bench seats, included with optional Interior Decor Group. Superbly tailored waffle-weave knit cloth and vinyl in Jade (DR). Also offered in light-grain all-vinyl. Seats feature dual fold-down

with basket-weave pattern all-vinyl in White with Chamois components (G2). These bucket seats, also offered in cloth and vinyl (see D), are an alternate—at nominal extra cost—to the split bench seats with manual passenger recliner (see C). Other elements of this optional group include: passenger side visor vanity mirror, padded rear seat armrests, decor door trim panels with carpeting (except with White trim), color-keyed deluxe belts and 18-oz. cut-pile carpeting.

(F) Thunderbird flight bench seat comes standard trimmed with rich-looking, block-design knit cloth and vinyl shown in Chamois (KT). Also available in light-grain all-vinyl.

Note: Some items shown are optional. See options list on pages 12-15. Color code reference is on back cover.

Norable Standard Features

In keeping with Thunderbird's reputation for luxurious value, the 1979 version provides many prestige extras that don't cost extra. For example:

Thunderbird

FUNCTIONAL

- 5.0 litre (302 CID) 2V V-8 engine with DuraSpark Ignition
- SelectShift automatic transmission
- Power steering
- Power front disc/rear drum brakes
- Front/rear stabilizer bars
- 15-in. steel-belted radial ply tires (BSW)
- Wiper-mounted washer jets
- Fender louvers
- Chrome-plated swingaway grille
- Front and rear bumper guards
- Inside hood release
- MagicAire heater/defroster
- Illuminated electric clock (self-adjusting)
- Ignition key warning buzzer
- Deluxe soundproofing
- Dual note horn
- Coolant recovery system
- Ford Motor Company Safety Design Features

APPEARANCE AND COMFORT

- Comfort-contoured front flight bench seat with cloth and vinyl upholstery
- Color-keyed 10-oz. cut-pile carpeting
- All-vinyl door trim with burl walnut woodtone appliques
- Full-length door armrests
- Burl walnut woodtone appliques on instrument panel
- AM radio (may be deleted for price credit or upgraded at extra cost)
- DirectAire Ventilation
- Opera windows
- Bright moldings at roof wrapover, drip rails, windows, door belts, hood rear edge, rocker panels and wheel lips
- Hood ornament
- Concealed headlamps
- Divided taillamps with Thunderbird insignia
- Full wheel covers (4)

Town Landau

Most standard Thunderbird features, with these additions or variations:

- Town Landau insignia on instrument panel applique
- 22K Gold finish instrument panel plaque engraved with your name*
- AM/FM stereo search radio (with two door-mounted speakers and dual rear seat speakers)
- Tilt steering wheel
- SelectAire Conditioner (manual control)

Measurements

Wheelbase	Length	Height	Width	Tread		Trunk Space	Fuel Capacity	Passenger Capacity
2 896 mm (114.0")	5 530 mm (217.7")	1 341 mm (52.8")	1 994 mm (78.5")	Front 1 605 mm (63.2")	Rear 1 603 mm (63.1")	442 l * (15.6 cu. ft.)	79.6 l ** (17.5 Imp. Gal.)	6††

*476 l (16.8 cu. ft.) with Inflatable Spare Tire option

**102.3 l (22.5 Imp. Gal.) with extended range fuel tank

††5 with optional bucket seats

Notes

CORROSION PROTECTION. All Thunderbird cars are protected with the DURAGUARD System, which includes 7 processes built in at the factory as standard equipment, to provide corrosion protection as follows • pre-coated steel on doors, quarter panels and other selected areas • galvanized steel on rocker panels, selected cowl tops and underbody parts • vinyl sealer on the underside of rear wheelhouses • phosphate coating on the entire car body after a super cleaning process • spray application to apply corrosion resistant primer paint, also on the entire body • aluminized wax sprayed into hard-to-reach lower body areas, the inside surfaces of doors and quarter panels • protective vinyl coating behind the wheel openings and along the lower bodyside area.

The DURAGUARD System is backed by a no-extra-charge 36-month unlimited distance manufacturer's warranty against corrosion perforation. This warranty, transferable to succeeding owners, covers the cost of both labour and materials for repair of perforation of parts caused by corrosion. Exhaust system parts excluded. The basic 12 month/20,000 kilometre warranty covers

- Tinted glass
- Interior Luxury Group (see pages 2 and 3 for full details)
- 6-way power driver's seat
- Seat belt warning chime
- Power side windows
- Power Lock Group
- Luxury Sound Insulation Package
- Brushed aluminum roof wrapover applique
- Opera windows with Town Landau script
- Color-coordinated translucent hood ornament insert
- Cast aluminum wheels with accent paint (4)
- Accent stripes on bodysides, hood and grille opening panel, deck lid, headlamp doors and fender louvers
- Wide color-keyed vinyl insert bodyside moldings with partial wheel lip moldings
- Dual remote control sport mirrors
- Front cornering lamps
- Bumper rub strips
- 15-in. steel-belted radial ply tires (WSW)
- Extended range fuel tank

Heritage

Most standard Thunderbird and Town Landau features, with these additions or variations:

- Split bench seats with unique biscuit design all-cloth upholstery and Thunderbird insignia on upper seat back bolsters
- Assist straps on front seat backs and doors
- Elegant 36-oz. cut-pile carpeting
- Molded door/quarter armrests with extra padding
- Hand-stitched leather-covered pad on instrument panel
- Ebony woodtone appliques on instrument panel, knobs, door/quarter trim panels and steering wheel
- Sports Instrumentation Group
- Left- and right-hand illuminated visor vanity mirrors
- Bright pedal trim
- Color-keyed 18-oz. trunk carpeting and molded deck lid liner
- Leather-wrapped luxury steering wheel
- Fingertip speed control
- Convenience Group
- Light Group
- Illuminated entry system
- Padded vinyl roof with unique quarter panel appearance and Heritage script
- Exclusive monochromatic color scheme. Choice of Maroon (2J) or Light Medium Blue (3F)
- Color-keyed grille, bumper guards, rub strips and cast aluminum wheels (4)
- Triband bodyside tape stripes
- Door plaques with your initials*
- Power antenna
- Rocker panel moldings

Options list is shown on pages 12-15.

*Plaques will be sent to you after delivery of your Thunderbird.

COURTESY OF
OAKRIDGE FORD SALES LIMITED
601 OXFORD ST. WEST
LONDON, ONTARIO
(519) 472-4120



corrosion, other than perforations, that are due to defective factory materials or workmanship. Ask your dealer for details.

COLOR AND TRIM CODES. Car colors and trims are coded, example: Dark Cordovan Metallic (8N). Your Ford Dealer will be pleased to show you color samples of paint and trim materials.

OPTION AVAILABILITY. Some features presented are optional at extra cost. Some options are required in combination with other options. Availability of some models and features described may be subject to some delay. Ask your Ford Dealer for the latest information on options, prices and availability.

PRODUCT CHANGES. Ford Motor Company of Canada, Limited reserves the right to change specifications at any time without incurring obligations.

REPLACEMENT PARTS. Be sure to specify genuine Ford-approved parts, Motorcraft parts and Autolite Spark Plugs from your Ford Dealer.

Motorcraft

THUNDERBIRD



1904 1979