

1991 LINCOLN  
LUXURY CAR  
EXTERIOR COLORS





Distinctive color choices for Mark VII, Continental and Town Car; see chart and special listings for applications to specific models. The colors designated Clearcoat have an especially glossy and deep luster finish because the color lies beneath a clear acrylic coat that provides extra protection.

The descriptions and specifications contained in this folder were in effect at the time the publication was approved for printing. Ford Motor Company, whose policy is one of continuous improvement, reserves the right to discontinue models, at any time, or to change specifications or design without notice and without incurring obligation.

Litho in U.S.A.



<b>STANDARD EXTERIOR COLORS</b>	AC	AD	DC	DD	EG	ER	EW	EX	KB	MD	ME	MK	UA	YG	YX	YO
MARK VII			•	•	•	•		•	•	•	•	•	•	•	•	•
CONTINENTAL			•	•	•	•	•	•	•	•		•	•	•	•	•
TOWN CAR	•					•	•	•	•		•	•	•	•		•
TOWN CAR SIGNATURE SERIES		o AG				o MT	o MT	o MT	o MT	o RB		o MT	o MT	o MT		o MT
TOWN CAR CARTIER DESIGNER SERIES		o AG								o RB					o MT	

• —Standard   o—Includes color-coordinated bodyside color   AG—Aztec Gold   MT—Medium Titanium   RB—Regatta Blue



# 1991 LINCOLN EXTERIOR COLORS\*



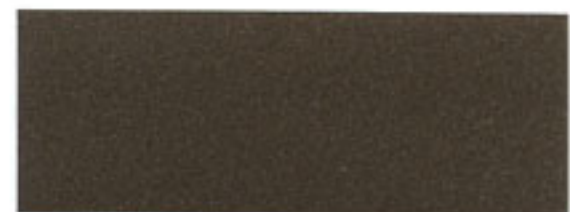
## STANDARD EXTERIOR COLORS



**Aztec Gold Clearcoat Metallic** AC  
Town Car



**Champagne Pearlescent Clearcoat Metallic** AD  
Town Car



**Medium Mocha Clearcoat Metallic** DC  
Mark VII, Continental



**Light Mocha Pearlescent Clearcoat Metallic** DD  
Mark VII, Continental



**Garnet Red Clearcoat Metallic** EG  
Mark VII, Continental



**Burgundy Clearcoat Metallic** ER  
Mark VII, Town Car, Continental



**Silver Rosé Clearcoat Metallic** EW  
Town Car, Continental



**Cranberry Clearcoat Metallic** EX  
Mark VII, Town Car, Continental



**Amethyst Pearlescent Clearcoat Metallic** KB  
Mark VII, Town Car, Continental



**Crystal Blue Pearlescent Clearcoat Metallic** MD  
Mark VII, Town Car, Continental



**Regatta Blue Clearcoat Metallic** ME  
Mark VII, Town Car



**Twilight Blue Clearcoat Metallic** MK  
Mark VII, Town Car, Continental



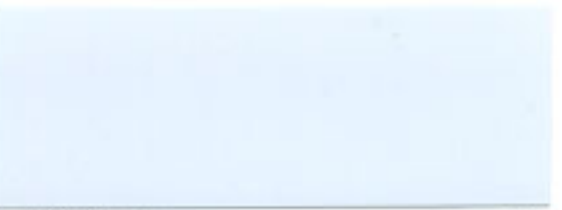
**Midnight Black Clearcoat** UA  
Mark VII, Town Car, Continental



**Graphite Clearcoat Metallic** YG  
Mark VII, Town Car, Continental



**Titanium Pearlescent Clearcoat Metallic** YX  
Mark VII, Town Car, Continental



**Arctic White** Y0  
Mark VII, Town Car, Continental

## TOWN CAR SIGNATURE SERIES AND TOWN CAR CARTIER DESIGNER SERIES COLOR COORDINATED LOWER BODYSIDE COLORS.

See Chart for Applications



**Aztec Gold**



**Medium Titanium**



**Regatta Blue**