

# ELANTRA N Line

2021

 **N** Line



# Spice up your driveway with N Line.

Derived from our high-performance N brand, N Line models are outfitted with N-inspired styling that sets them apart from other models. The Elantra N Line also features enhanced power, handling and agility that makes driving an invigorating rush, while maintaining a balanced combination of technology, safety and comfort.







# Introducing the first-ever ELANTRA N Line.

The Elantra N Line turns up the heat with N-inspired design elements and a powerful 1.6L Turbocharged engine with 201 horsepower and 195 lb.-ft. of torque.

# ELANTRA with an edge.

N Line takes the Elantra's new redesign and pushes the limits even more. From its glossy black grille and 18" alloy wheels, to the chrome twin-tip exhaust, the Elantra N Line is infused with N-inspired style throughout.



N Line front fascia and glossy black grille with emblem



N Line rear fascia with twin-tip exhaust  
LED daytime running lights and LED headlights



N Line rear spoiler  
N Line 18" alloy wheels





# Take it up a notch.

The Elantra N Line delivers an engaging and fun drive with upgraded performance features that elevate on-road dynamics.

**201** horsepower

**195** lb.-ft. torque



## Drive Mode Select

The fun begins with your drive mode options. At the press of a button find your preferred powertrain, steering and stability control settings. Choose from four different modes:

**Normal** – for an everyday driving feel

**Sport** – for more spirited driving

**Sport+** – an exclusive N Line setting, the most aggressive

**Custom** – customize vehicle settings to your preference



## Sport-tuned suspension and steering

The Elantra N Line is outfitted with sport-tuned suspension designed to elevate on-road dynamics, responsiveness and feel — which makes cornering a true pleasure.



## Independent multi-link suspension

Drive like you mean it, with upgrades like independent multi-link rear suspension that maxes out traction on the roughest of surfaces.



## Smartstream 1.6L Turbocharged GDI engine

The Elantra N Line's Smartstream 1.6T GDI engine delivers 201 horsepower and 195 lb.-ft. of torque.

# Comfort wrapped in N Line style.

The driver-oriented wraparound design combines comfort with N-inspired elements like red stitching and brushed aluminum pedals.



N Line shifter with red stitching and emblem  
Aluminum pedals



N Line Sport seats with red stitching



N Line steering wheel with red stitching



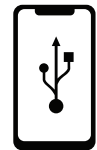
# Stay connected.



8.0" touch-screen display



Bose® premium sound system



Wireless Apple CarPlay™ and Android Auto™

With the Elantra N Line, technology is at your fingertips. The 8.0" touch-screen is tilted 10 degrees towards the driver for easier control and access from behind the wheel. Seamlessly access wireless Apple CarPlay™ and Android Auto™ smartphone connectivity and the Bluetooth® hands-free phone system.

The 8-speaker Bose® premium sound system brings rich sound to the cabin, making the Elantra N Line the perfect way to experience your favourite playlist.

# Hyundai SmartSense™

Our suite of available Hyundai SmartSense™ safety features includes a range of camera, radar and motion detection technologies to provide you with added peace of mind.

## Standard features:



Forward Collision-Avoidance Assist with Pedestrian Detection



Lane Following Assist



Lane Departure Warning with Lane Keeping Assist



Driver Attention Warning



Blind-Spot Collision-Avoidance Assist



Rear Cross-Traffic Collision-Avoidance Assist



High Beam Assist



Safe Exit Warning



Rear Occupant Alert



Tire Pressure Monitoring System



# Ultimate convenience. Ultimate connectivity.

Bluelink<sup>®</sup> is our connected vehicle system that is available throughout our vehicle lineup. The advanced system conveniently keeps you connected with your Hyundai via the smartphone app, and offers a suite of services at the press of a button. Visit [hyundaicanada.com/bluelink](http://hyundaicanada.com/bluelink) or see your dealer for more information on the complete list of innovative features that Bluelink<sup>®</sup> puts at your fingertips.



Remote start with climate control



Remote lock/unlock



Real-time diagnostics

## SOS

SOS emergency and roadside assistance



Find my car



Find a dealer



Automatic collision notification



Local search

## 3 YEAR

Complimentary 3-year subscription on equipped models



# Specifications.

## N Line

Standard equipment includes:

### Performance features:

- Smartstream 1.6L Turbocharged GDI engine
- 7-speed Dual Clutch Transmission with steering wheel-mounted paddle shifters
- 4-wheel disc brakes
- Multi-link rear suspension
- Motor-driven power steering
- Sport-tuned suspension and steering
- Drive Mode Select with Sport mode

### Exterior features:

- 18" alloy wheels
- N Line front grille (black and chrome) and bumper (body coloured with black moulding) fascia
- N Line rear fascia with diffuser element
- Black lip spoiler
- Black beltline moulding
- Chrome twin round exhaust outlets
- Automatic headlights
- LED headlights (high/low beam)
- LED integrated side mirror turn signal repeaters
- LED daytime running lights
- LED tail lights
- Body-coloured side sills and door handles
- Heated power-adjustable side mirrors
- Proximity keyless entry with push-button ignition and remote start
- Hands-free Smart Trunk
- Solar control front and rear glass

### Interior features:

- N Line Sport seats (leather/cloth combination)
- 8.0" touch-screen display with wireless Apple CarPlay™<sup>Δ</sup> and Android Auto™<sup>◊</sup>
- Bose® AM/FM/SiriusXM™<sup>‡</sup>/MP3/HD premium audio system with 8 speakers
- Bluelink® connected vehicle system<sup>Ω</sup>
- Wireless charging pad<sup>▼</sup>
- Bluetooth® hands-free phone system with voice recognition
- Power tilt-and-slide sunroof
- Steering wheel-mounted audio and Bluetooth® controls
- Dual-zone automatic climate control with auto-defogging windshield system
- Heated front seats
- Leather-wrapped steering wheel and shift knob
- Heated steering wheel
- Aluminum pedals
- 4.2" Sport instrument cluster
- Power windows with driver's auto-up/down
- 6-way manually adjustable driver's seat
- 4-way manually adjustable front passenger's seat
- 60/40 split-folding rear seats
- Rear centre armrest with cup holders
- Rear seats with adjustable head restraints
- Sliding sunvisors with illuminated vanity mirrors

### Safety features:

- Airbags (6) – driver (1), front passenger (1), driver and front passenger side impact (2), front/rear side impact curtains (2)
- Tire Pressure Monitoring System
- Rear Occupant Alert
- Safe Exit Warning
- Forward Collision-Avoidance Assist with Pedestrian Detection (camera type)
- Lane Departure Warning with Lane Keeping Assist
- Lane Following Assist
- High Beam Assist
- Driver Attention Warning
- Blind-Spot Collision-Avoidance Assist
- Rear Cross-Traffic Collision-Avoidance Assist
- Rearview camera with dynamic guidelines

# Colours and wheels.

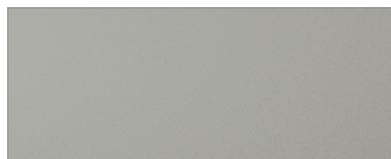
## Exterior colours\*



Space Black



Polar White



Cyber Grey



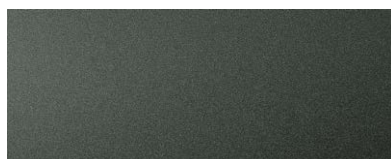
Fiery Red



Lava Orange

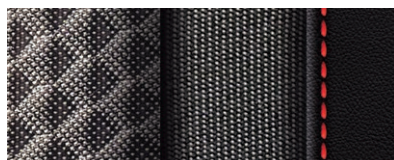


Intense Blue



Amazon Grey

## Interior colours\*



Black cloth/leather combination  
with red stitching

## Wheels



18" alloy wheel



# Accessories.



## Cargo net

A custom-fit cargo net ensures everything you're transporting remains organized and in place by preventing items from sliding around.



## Door pocket clear film

A clear protective film that lies behind the door handle to help prevent paint damage to this commonly scratched area.



## Mud guard kit – front

Custom-fit mud guards help keep the dirt and debris of everyday driving where it belongs.



## Multimedia device holder

This multimedia device holder allows your backseat passengers to have in-seat entertainment using a mobile phone or a tablet device. Features 360° rotation to allow use in portrait or landscape layout, hands-free. The included mounting bracket easily fits to the headrest, and the device holder is removable when not in use.



## Premium all-weather floor liners

Premium all-weather floor liners were designed to cover the interior carpet providing maximum protection against the elements that other mats cannot offer. Their unique and durable design features a non-slip surface for added comfort and a long-lasting premium look. Remove carpet mats prior to installation.



## Rear bumper protector black film

Protection film easily applies to protect from scratches and scrapes while maintaining the appearance of your vehicle.

<b>5</b> YEAR	<b>100,000 km</b> Comprehensive Limited Warranty†
<b>5</b> YEAR	<b>100,000 km</b> Powertrain Warranty
<b>5</b> YEAR	<b>100,000 km</b> Emission Warranty
<b>5</b> YEAR	<b>Unlimited km</b> Roadside Assistance Program††

## One of the best-backed warranties in Canada.

You will see that a number of our vehicles have received multiple awards from the most reputable third-party organizations, so you can take their word when it comes to the quality of our vehicles. This quality is equally matched by the quality of our warranty. We stand confidently behind our products to give you ultimate peace of mind with a 5-year/100,000 kilometre Comprehensive Limited Warranty†. We also provide a 5-year/Unlimited kilometre Roadside Assistance Program†† featuring flat tire changing, lockout service and more. Just one toll-free call away, 24 hours a day.

™/®The Hyundai name, logos, product names, feature names, images and slogans are trademarks owned or licensed by Hyundai Auto Canada Corp.. Specifications, features, illustrations, accessories, materials and equipment and all other information shown in this brochure are based on the latest information available at the time of publication. Although descriptions are believed to be correct, accuracy cannot be guaranteed. Hyundai Auto Canada Corp. reserves the right to make any changes or modifications at any time, without notice or obligation, including, without limitation, in colour, specifications, features, accessories, materials, equipment and models. Some vehicles are shown with optional equipment. All Hyundai warranties have no deductible. †Hyundai's Comprehensive Limited Warranty coverage covers most vehicle components against defects in workmanship under normal use and maintenance conditions. ††Hyundai's 24-Hour Roadside Assistance Program is a limited service and does not cover certain costs or expenses. Roadside Assistance is not a warranty. ‡Apple CarPlay™ may not be available on all devices and may not be available in all countries or regions. Visit [www.apple.com](http://www.apple.com) for further details and any applicable limitations. Apple and Apple CarPlay are trademarks of Apple Inc.. ‡Android Auto™ may not be available on all devices and may not be available in all countries or regions. Visit [www.android.com](http://www.android.com) for further details and any applicable limitations. Android and Android Auto are trademarks of Google Inc.. †Vehicle is equipped with the ability to access SiriusXM radio. Does not include subscription. The SiriusXM™ name is a trademark of SiriusXM Satellite Radio Inc.. ‡Available on select models only. Bluelink® includes 3 years of service without charge. The Bluelink service is available for new vehicle purchases and leases subject to the Bluelink subscription terms and conditions. Only use Bluelink and corresponding devices when safe to do so. Cellular and GPS coverage is required. Features, specifications, and fees may vary by model and are subject to change. For more on details and limitations, visit [hyundaicanada.com](http://hyundaicanada.com) or your authorized Hyundai dealer. \*Not all devices will be compatible. See Owner's Manual for further details. Bluetooth® word mark and logos are registered trademarks owned by Bluetooth SIG, Inc.. HomeLink® is a registered trademark of Johnson Controls Inc.. Bose® is a registered trademark of Bose Corporation. All other trademarks and trade names are those of their respective owners. Some images shown with special graphic effects.

Hyundai Auto Canada Corp.  
[hyundaicanada.com](http://hyundaicanada.com)

