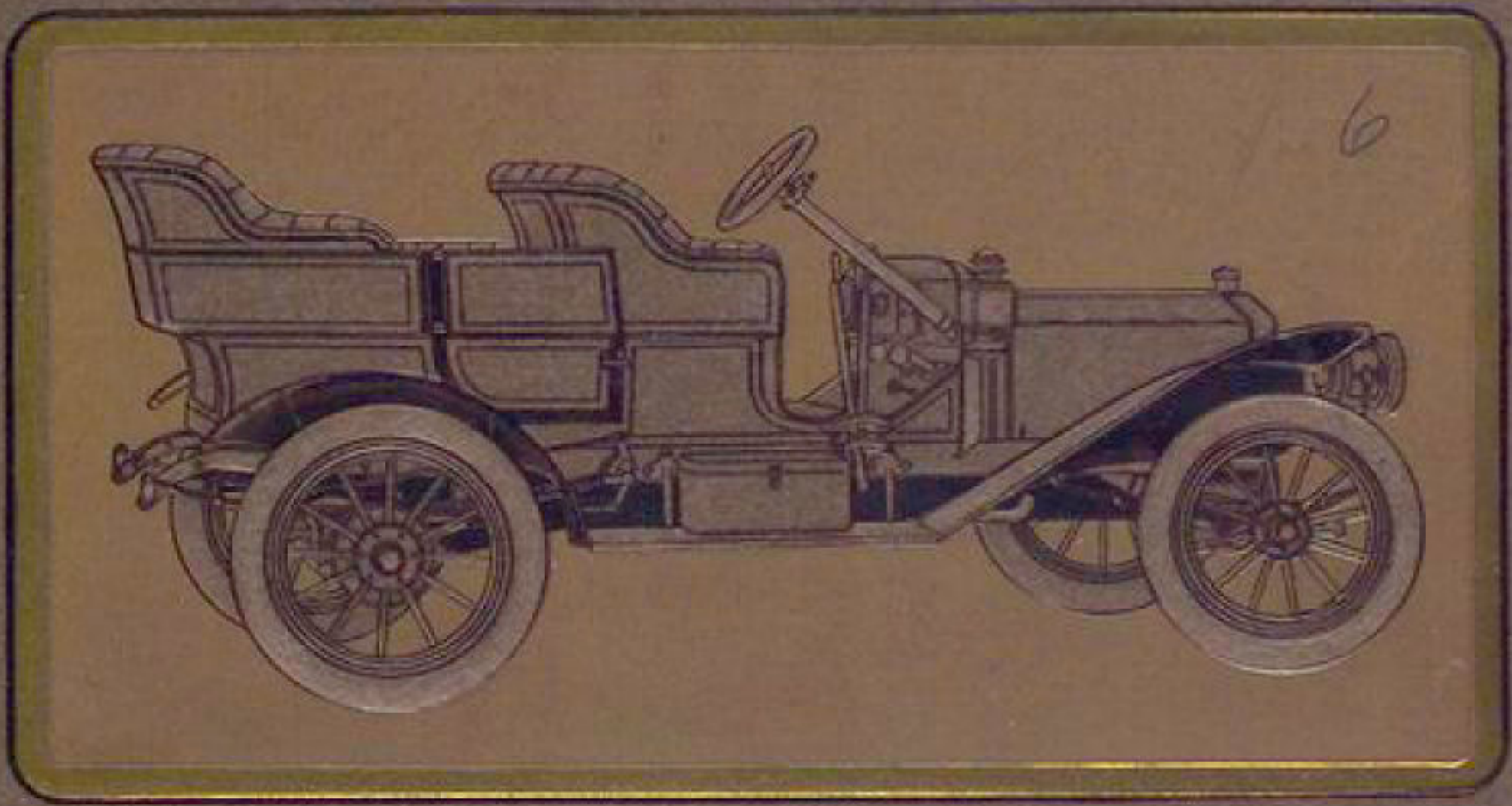


819254

1907

*[Handwritten signature]*



6

*Mitchell*

*[Handwritten signature]*



The   
Show Me  
Car 

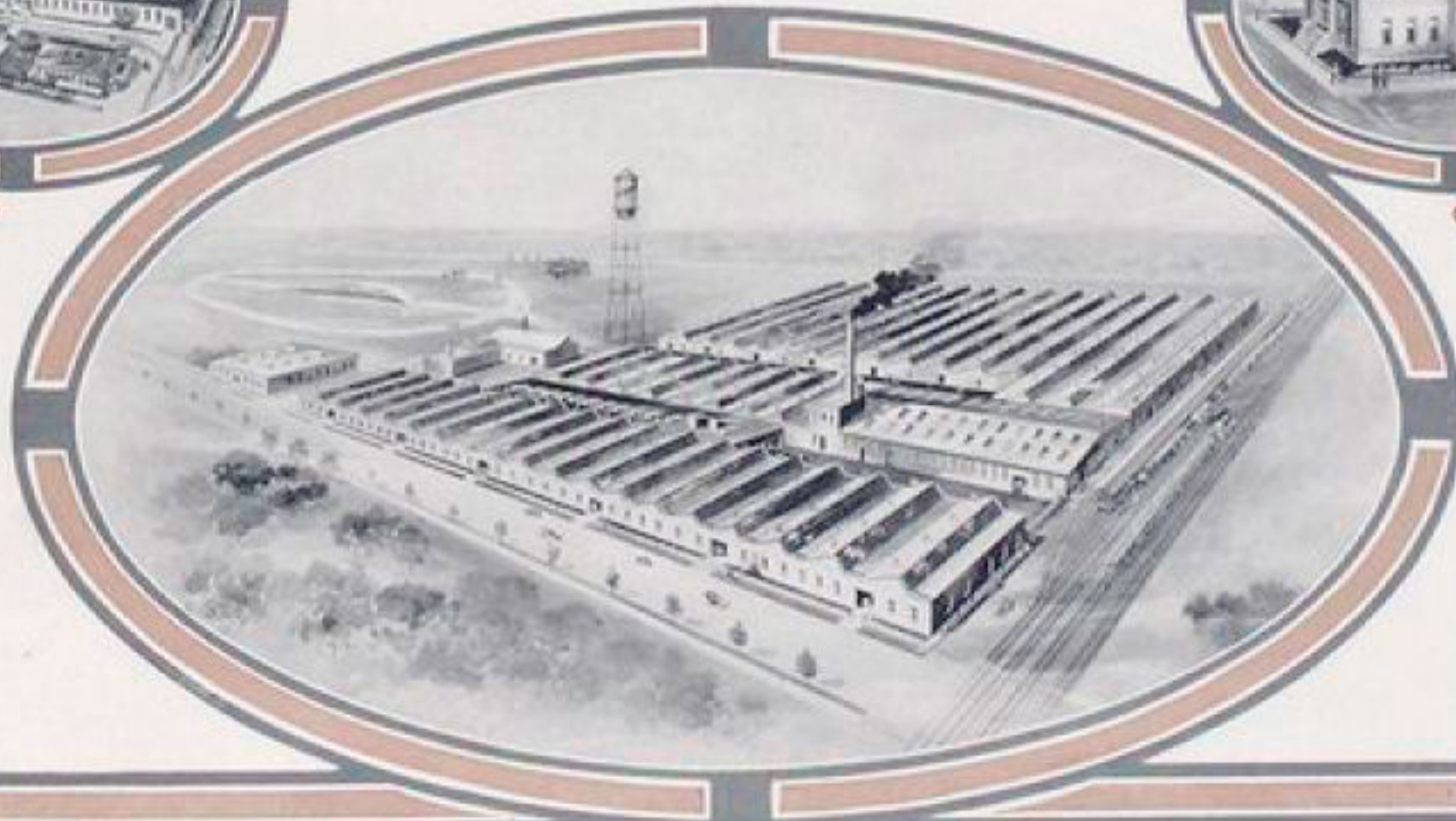
# Mitchell

Catalogue  
Number  
Nineteen



THE ACORN 1905

THE PLANT 1909



OFFICE BUILDING

MITCHELL  
MOTOR  
CAR  
COMPANY

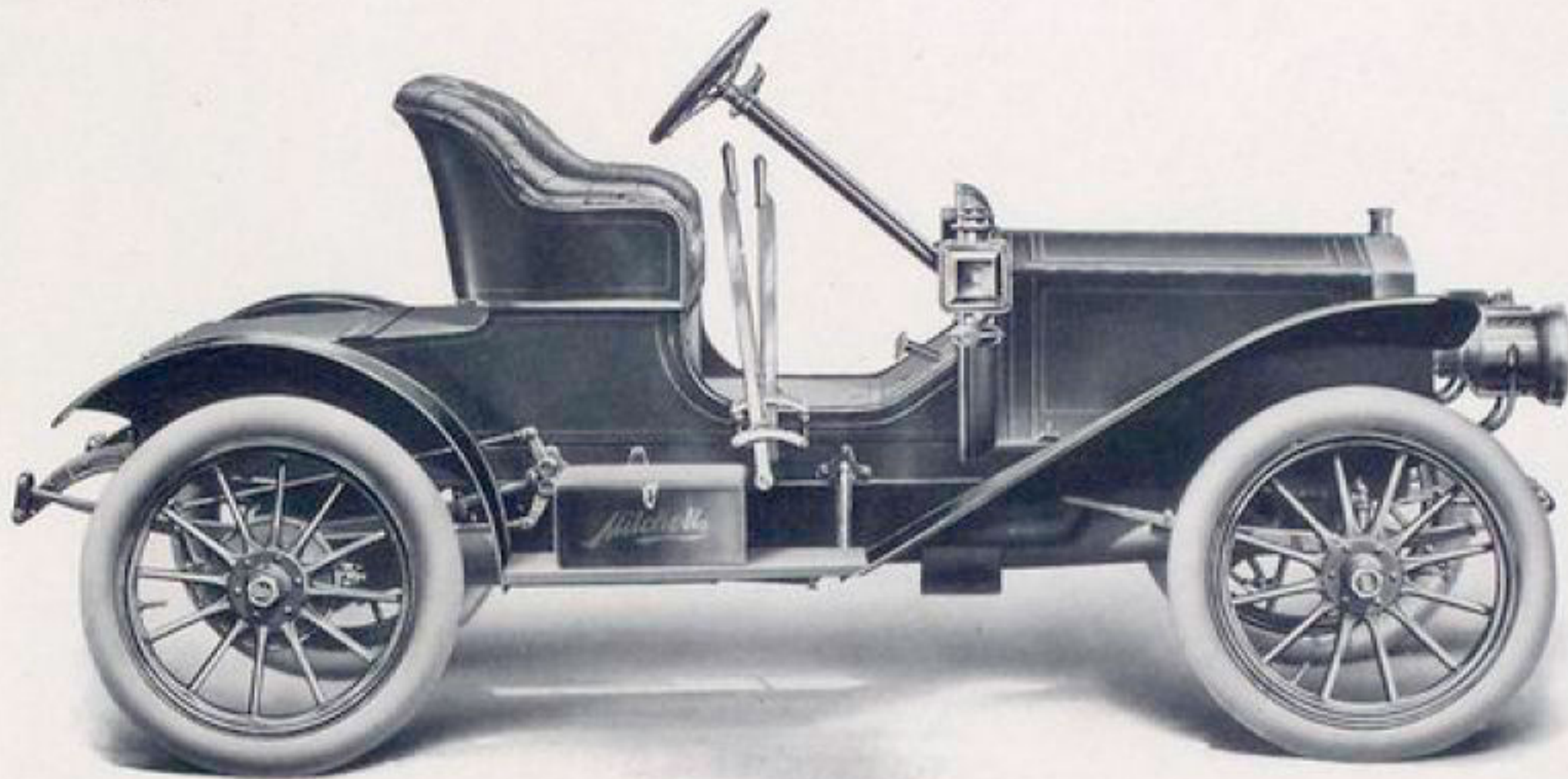
Factory and  
General Offices  
RACINE  
WIS., U.S.A.



The car you ought to have at the  
price you ought to pay,



# Mitchell



## THE MITCHELL "20"

### SPECIFICATIONS OF THE MITCHELL "20"

Motor — 4 x 4; 20 horse-power.  
Transmission — Selective type.  
Wheels — 32 x 3½ inches.  
Wheel Base — 92 inches.

Ignition — Jump Spark. (The engine, however, is designed so that magneto can be attached if purchaser wants it. Magneto for this type of car, \$100 extra.)

Color — Mitchell blue.

Tool Boxes — Steel with baked enamel finish.

Capacity — Two passengers. Single rumble seat, extra, \$50.

Steering Wheel — Black ebonite finish instead of stained.

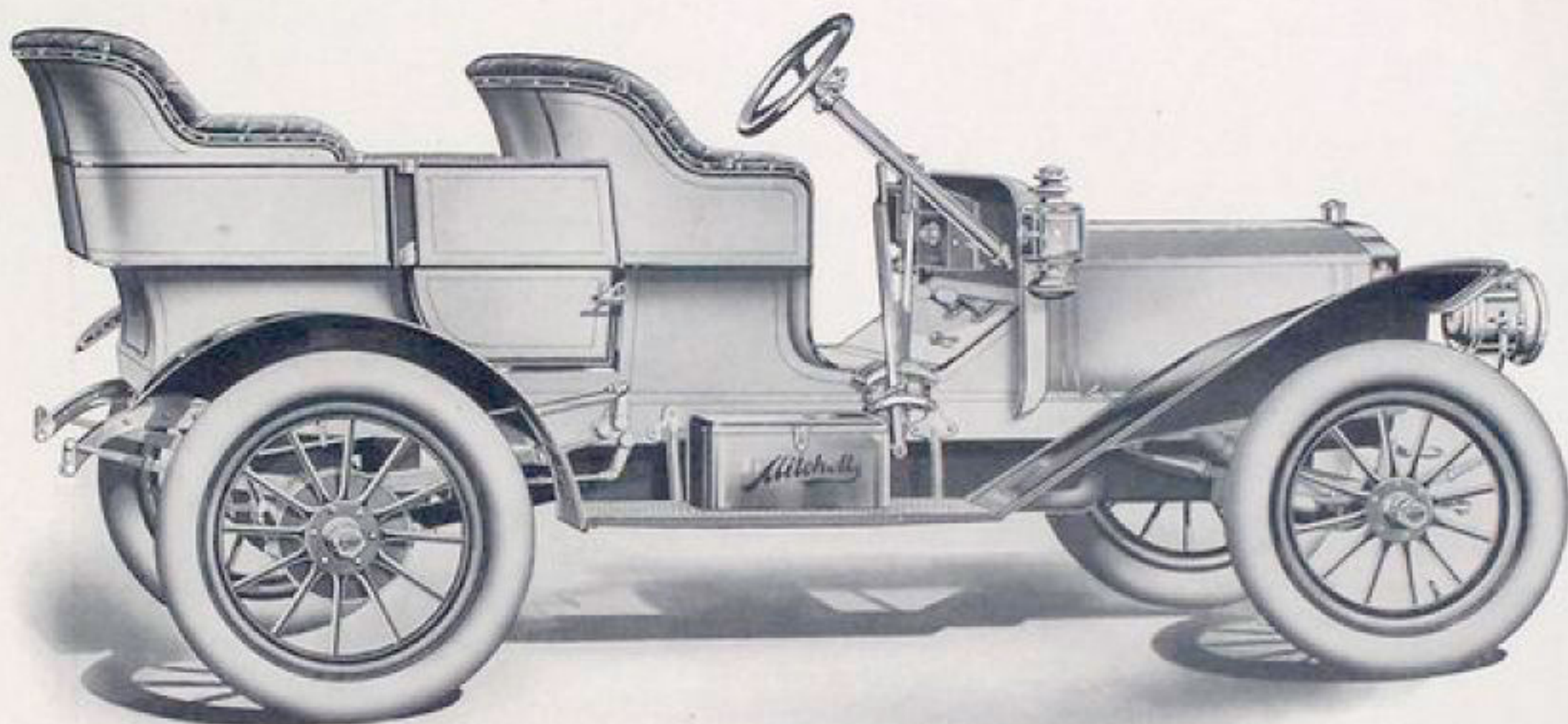
Springs — Special spring suspension, making an ideal easy riding car.

*Price, \$1,000*

Equipment on all cars includes adjustable Headlight Brackets, Oil Light Brackets, Tail Light Bracket and complete set of Tools



# Mitchell



## THE MITCHELL "30"

### SPECIFICATIONS OF THE MITCHELL "30"

Motor— $4\frac{1}{2}$  x  $4\frac{1}{2}$ ; 30 horse-power.

Transmission—Selective type.

Wheels—32 x 4 inches.

Wheel Base—105 inches.

Ignition—Magneto and dry cells.

Color—French gray, with red running gear and red upholstery or Mitchell blue with black upholstery.

Battery and Tool Boxes—Steel, with baked enamel finish.

Capacity—Five passengers, detachable tonneau.

Running Boards—Steel.

Steering Wheel—Black ebonite finish instead of stained.

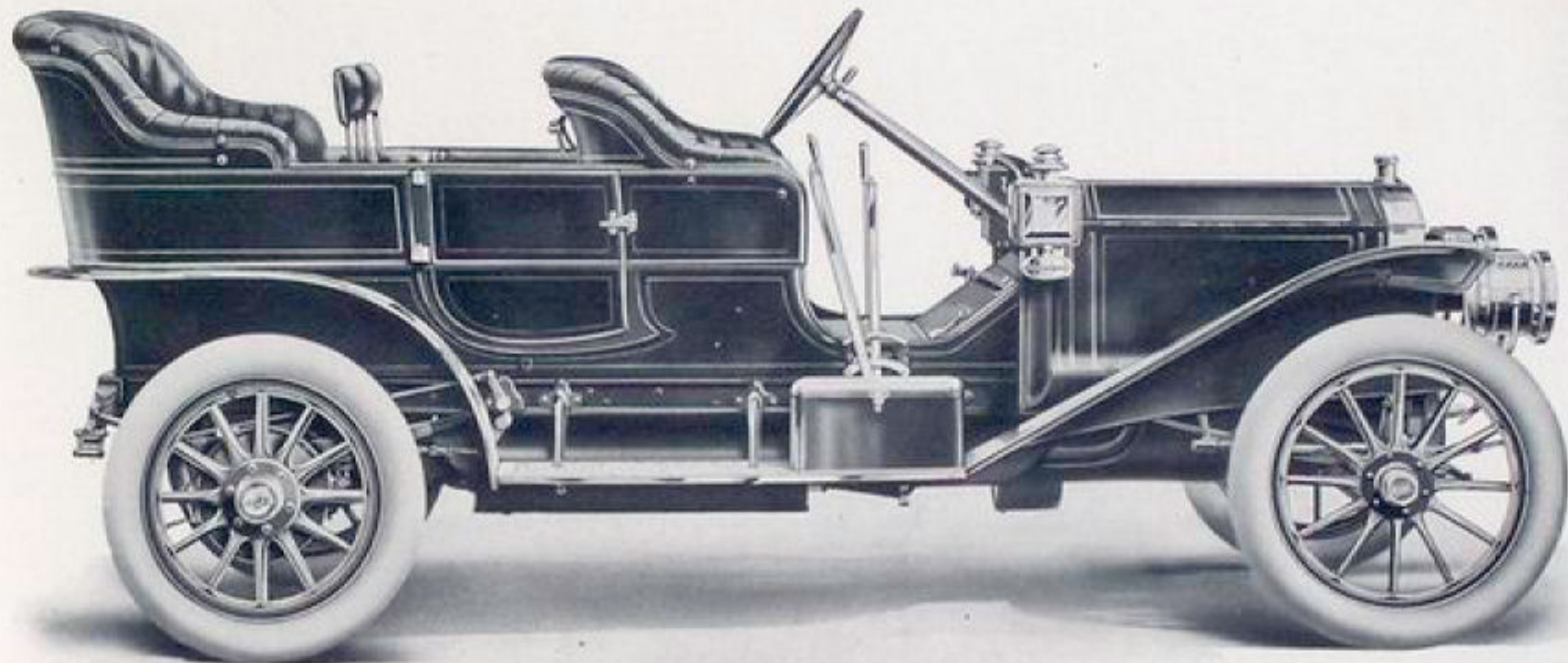
Body—Detachable tonneau. The following options, however, are given: Detachable tonneau; runabout deck; surrey body; single rumble seat. An extra charge, will of course, be made if more than one body is wanted.

*Price, \$1,500*

Equipment on all cars includes adjustable Headlight Brackets, Oil Light Brackets, Tail Light Bracket and complete set of Tools



# Mitchell



## THE MITCHELL "40"

### SPECIFICATIONS OF THE MITCHELL "40"

Motor —  $4\frac{1}{2} \times 5$ ; 40 horse-power.

Transmission — Selective type.

Wheels — 34x4 inches front, 34x4 $\frac{1}{2}$  rear.

Wheel Base — 122 inches.

Ignition — Magneto and dry cells.

Color — Mitchell blue.

Battery and Tool Boxes — Steel with baked enamel finish.

Capacity — Seven passengers. A charge of \$50 net is made for two extra seats.

Rear Springs — Platform type.

Running Boards — Steel.

Rear Axle — Floating type.

Steering Wheel — Black ebonite finish instead of stained.

Upholstering — Full and soft.

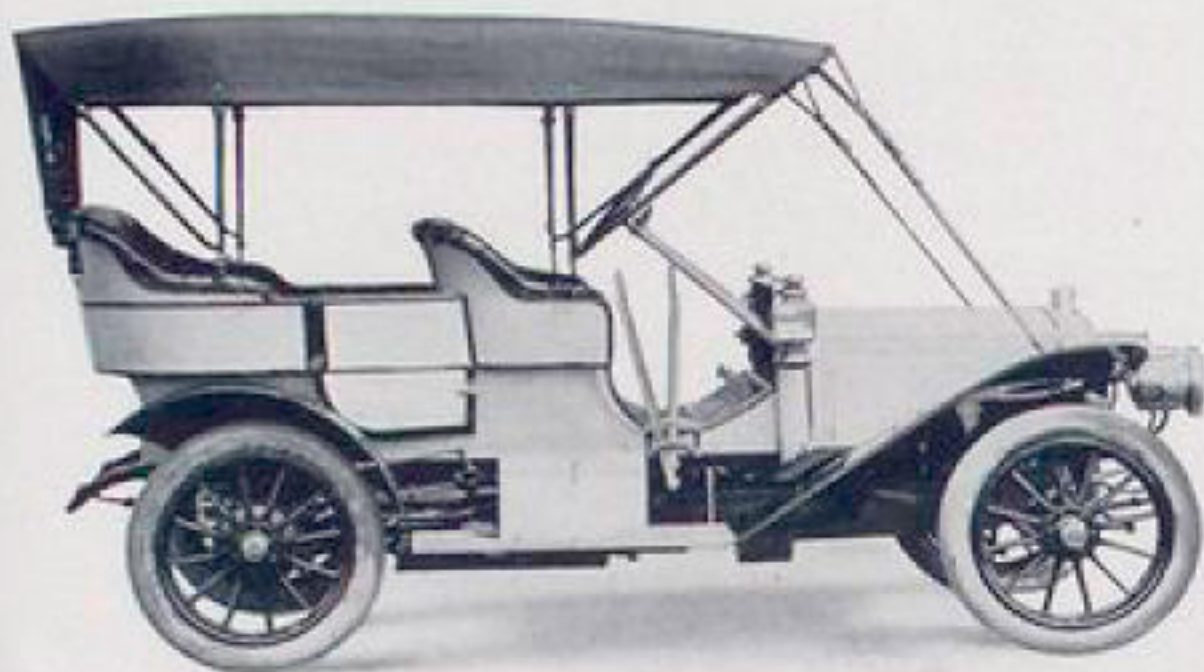
*Price, \$2,000*

Equipment on all cars includes adjustable Headlight Brackets, Oil Light Brackets, Tail Light Bracket and complete set of Tools



*Mitchell*

EXTRA EQUIPMENT



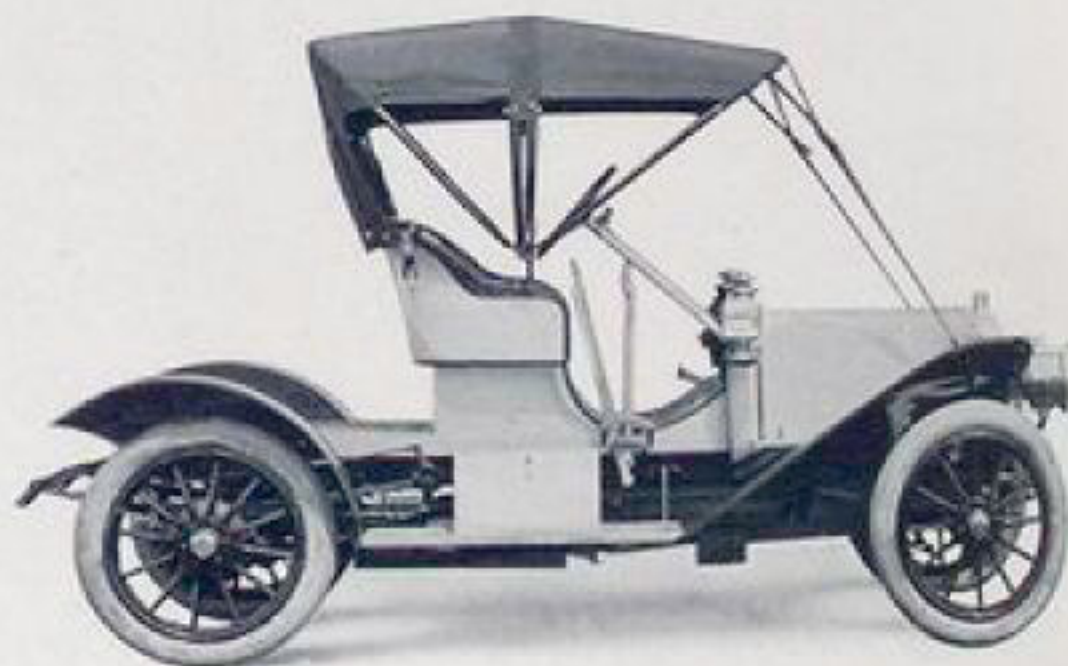
Mitchell "30," with Cape Top



Mitchell "40," with Cape Top



Mitchell "20," with Runabout Top



Mitchell "30," with Cape Top  
Adjusted for Runabout

MITCHELL MOTOR CAR COMPANY  
RACINE, WISCONSIN  
U. S. A.

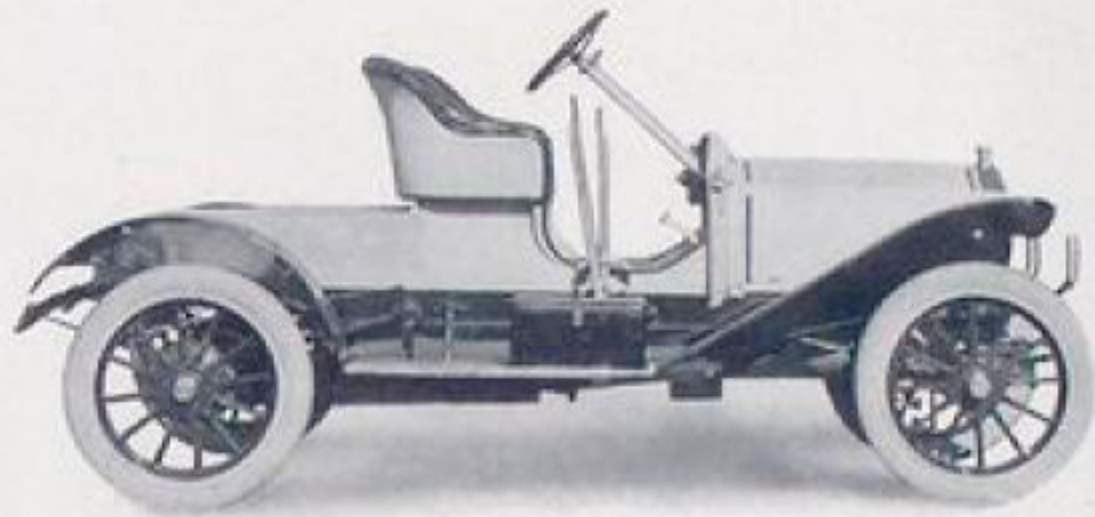


# Mitchell

## OPTIONAL EQUIPMENT



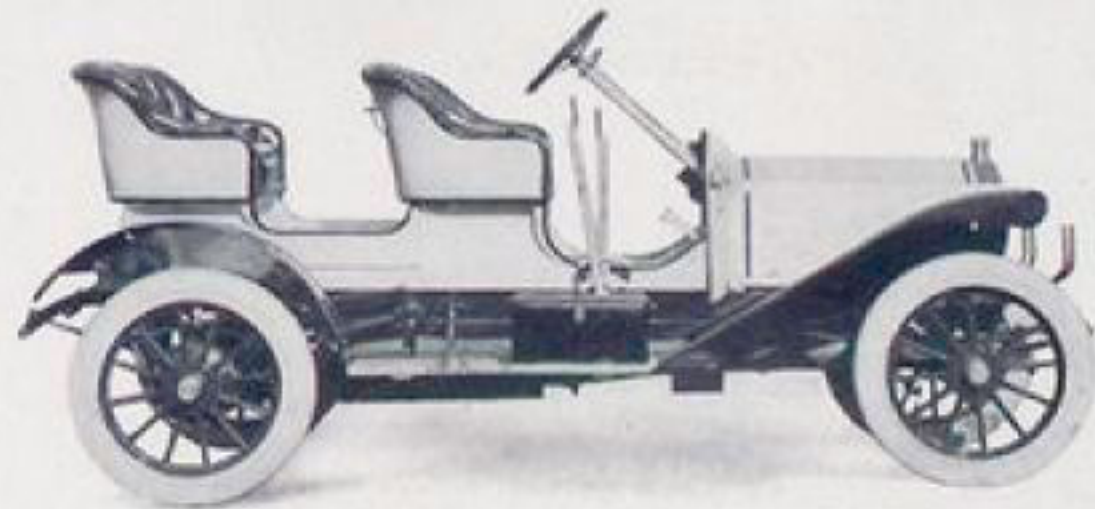
Mitchell "20," with Single Rumble Seat



Mitchell "30," with Runabout Deck



Mitchell "30," with Single Rumble Seat



Mitchell "30," with Surrey Body