

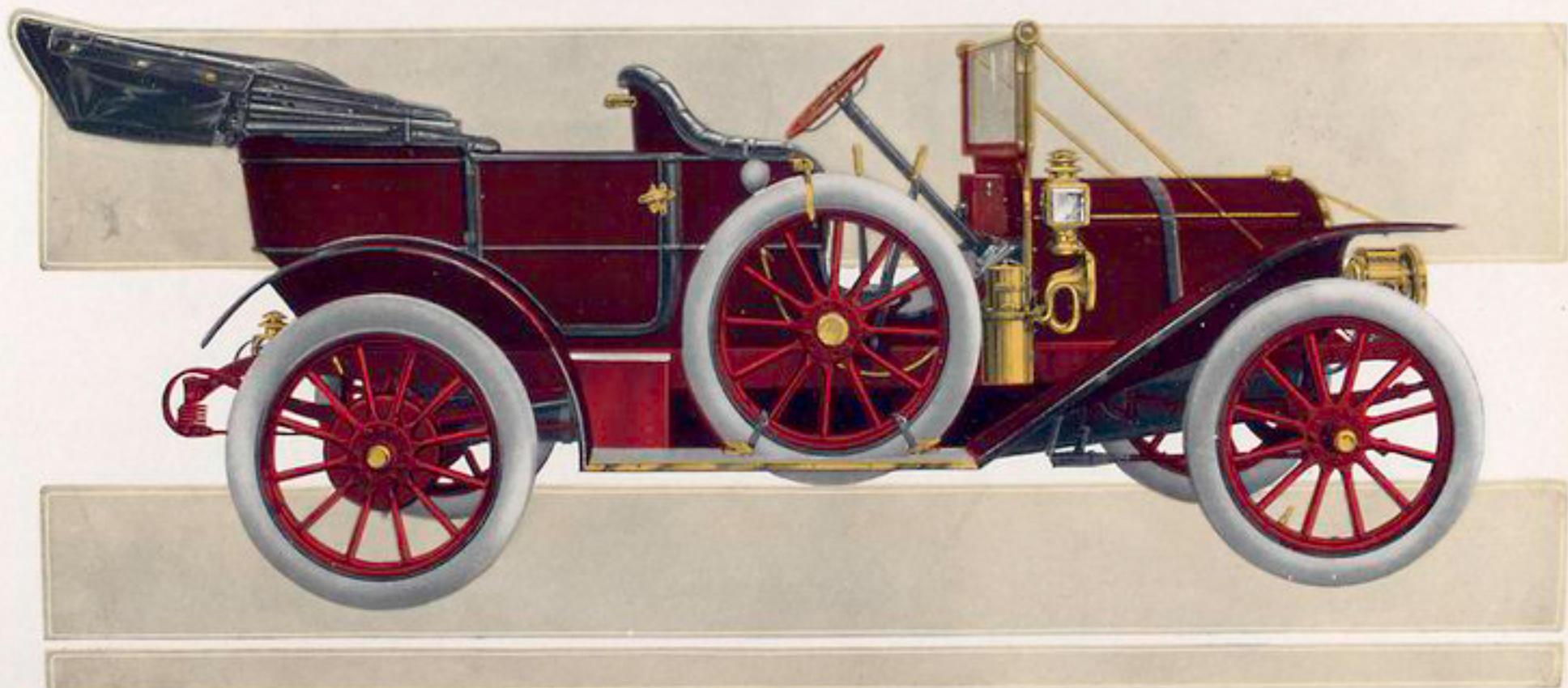
1917
5 09

Rambler

AUTOMOBILES

819256

Rambler



Model Forty-four

1909

Rambler

Automobiles

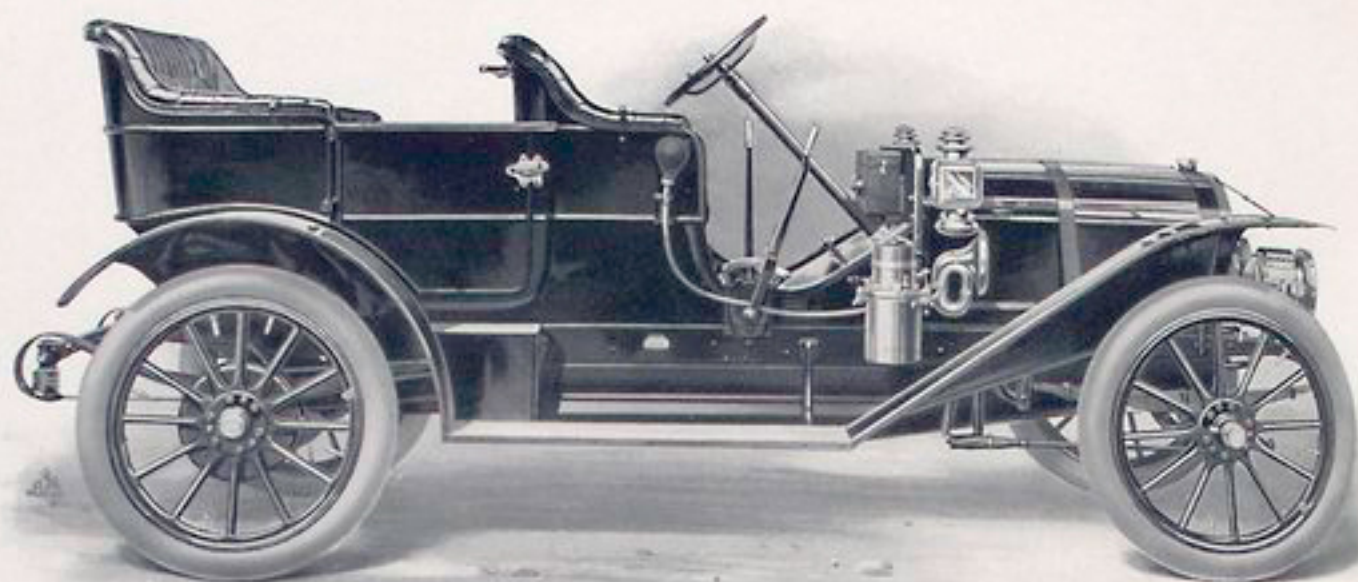


Catalog Number Sixteen

Thomas B. Jeffery & Company

Main Office and Factory: Kenosha Wisconsin

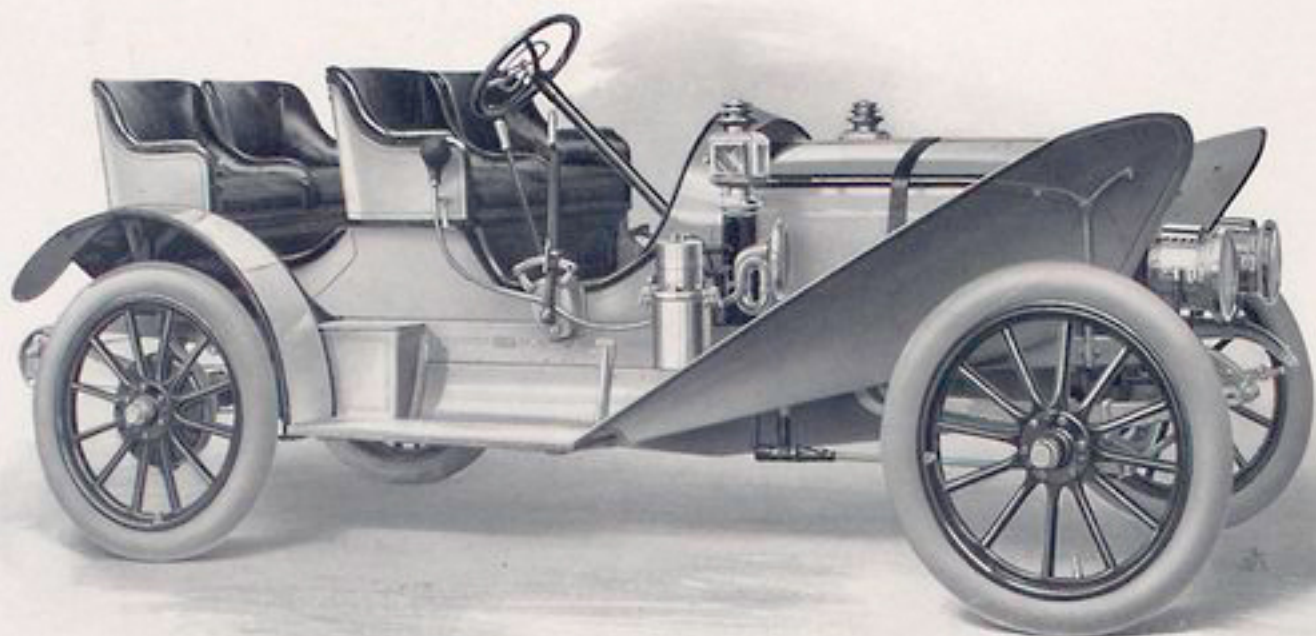
Branches and Distributing Agencies: - - - Chicago
Milwaukee Cleveland Boston New York San Francisco



Model Forty-four Touring Car

Specifications

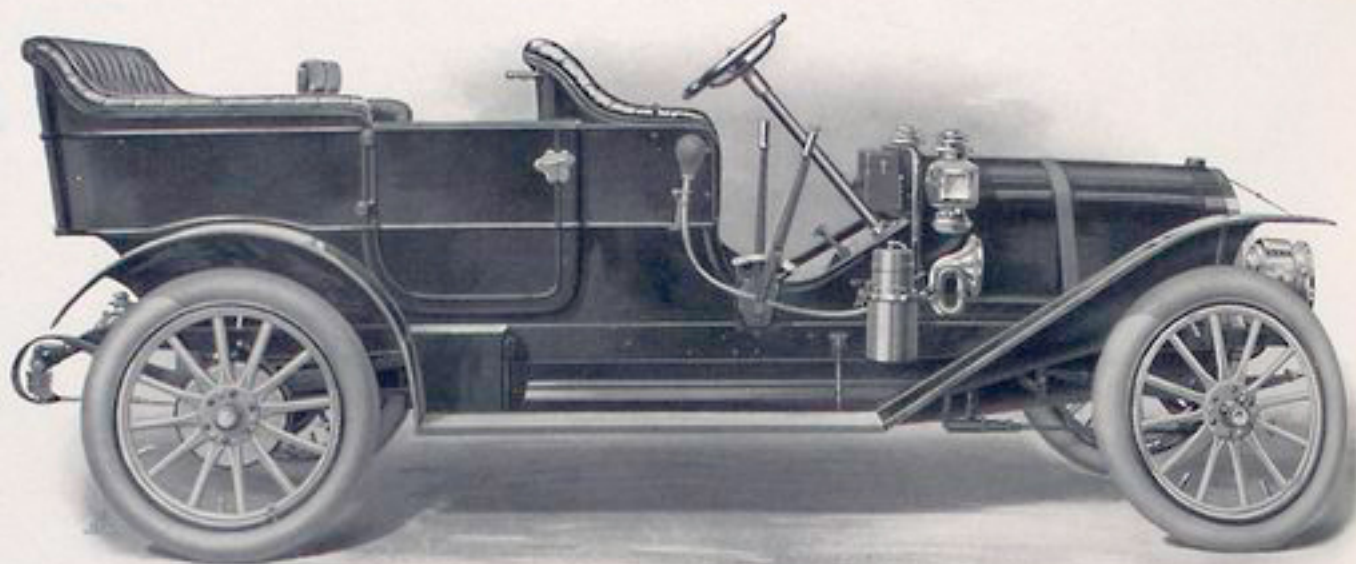
Wheel-Base	112 inches.	Transmission	Selective type, adjustable roller bearings.
Wheels	36 inches.	Drive	Shaft, straight-line.
Rims	Midgley Universal.	Brakes	Two, on rear hubs; 400 square inches surface.
Tires	36x4-inch Goodrich Quick Detachable; options, Hartford-Dunlop, Diamond, G. & J., and Fisk Clincher.	Body	Capacity, five passengers; bright-finish black leather.
Springs	Front, semi-elliptic; rear, Triple-Action, 52 inches long.	Color	Rich maroon body and guards; red running-gear.
Engine	34 h. p.; four vertical cylinders, 4 1/2 x 4 1/2 inches.	Equipment	Two lens mirror gas head-lights, two square oil side-lights, and tail-light, generator, horn, tools, pump, and tire-repair kit.
Valves	Overhanging, all on one side.	Price	\$2,250. Spare wheel, with inflated tire, brackets, and tools, \$74. Mohair top, with side curtains, \$100.
Crank-Case	Onepiece, side opening.		
Ignition	Jump spark; storage battery. Bosch magneto, \$150 extra.		



Model Forty-four Roadster

Specifications

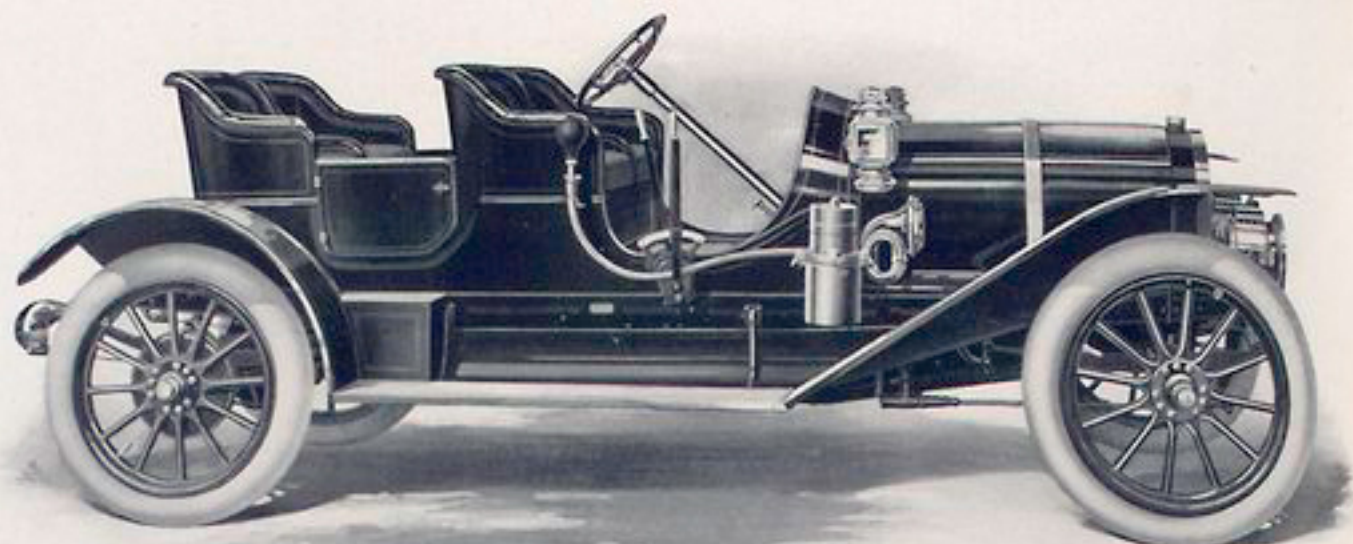
Wheel-Base	110 inches.	Ignition	Jump spark; storage battery. Bosch magneto, \$150 extra.
Wheels	36 inches.	Drive	Shaft, straight-line.
Rims	Midgley Universal.	Brakes	Two, on rear hubs; 400 square inches surface.
Tires	36 x 4-inch Goodrich Quick Detachable; options, Hartford-Dunlop, Diamond, G. & J., and Fisk Clincher.	Body	Capacity, two, three, or four passengers. Bright-finish red leather.
Springs	Front, semi-elliptic; rear, Triple-Action, 52 inches long.	Color	Motor-car gray, black trimming, and red wheels.
Engine	34 h.p.; four vertical cylinders, 4½ x 4½ inches.	Equipment	Two lens mirror gas headlights, two square oil side-lights, and tail-light, generator, horn, tools, pump, and tire-repair kit.
Valves	Overhanging, all on one side.	Price	\$2,250. Spare wheel, with inflated tire, brackets, and tools, \$74.
Crank-Case	One piece, side opening.		
Transmission	Selective type, adjustable roller bearings.		



Model Forty-five Touring Car

Specifications

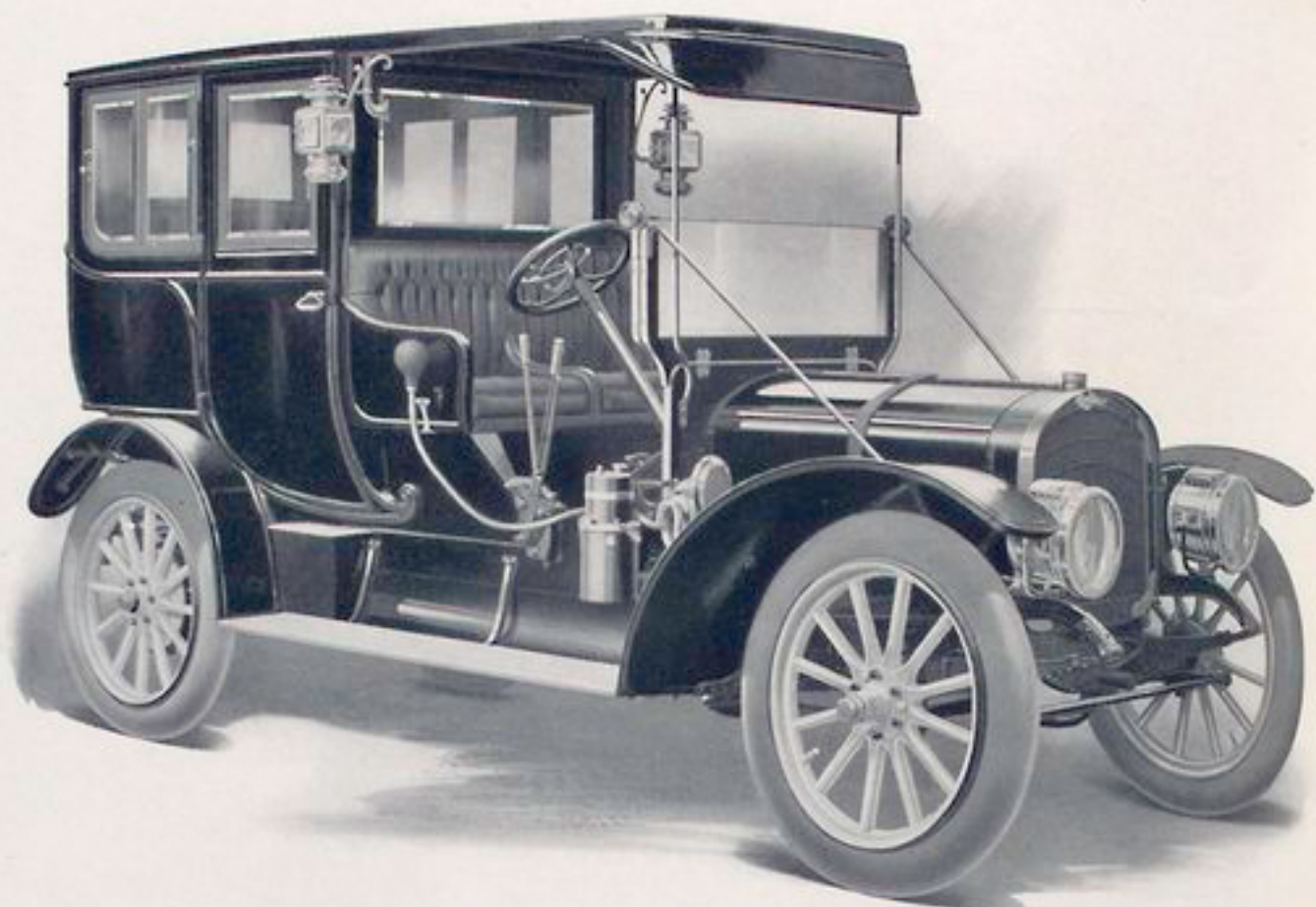
Wheel-Base	123 inches.	Drive	Shaft, straight-line.
Wheels	36 inches.	Brakes	Two, on rear hubs; 400 square inches surface.
Rims	Midgley Universal.	Body	Capacity, seven passengers, with folding tonneau chairs. Bright-finish black leather.
Tires	36x4½-inch Goodrich Quick Detachable; options, Hartford-Dunlop, Diamond, G. & J., and Fisk Clincher.	Color	Brewster green, cream wheels.
Springs	Front, semi-elliptic; rear, Triple-Action, 52 inches long.	Equipment	Two lens mirror gas head-lights, two square oil side-lights, and tail-light, generator, horn, tools, pump, and tire-repair kit.
Engine	45 h. p.; four vertical cylinders, 5x5½ inches.	Price	\$2,500. Spare wheel, with inflated tire, brackets, and tools, \$85. Mohair top, with side curtains and folding glass wind shield, \$150.
Valves	Overhanging, all on one side.		
Crank-Case	One piece-side opening.		
Ignition	Jump spark; storage battery. Bosch magneto, \$150 extra.		
Transmission	Selective type, adjustable roller bearings.		



Model Forty-five, Four-Passenger Car

Specifications

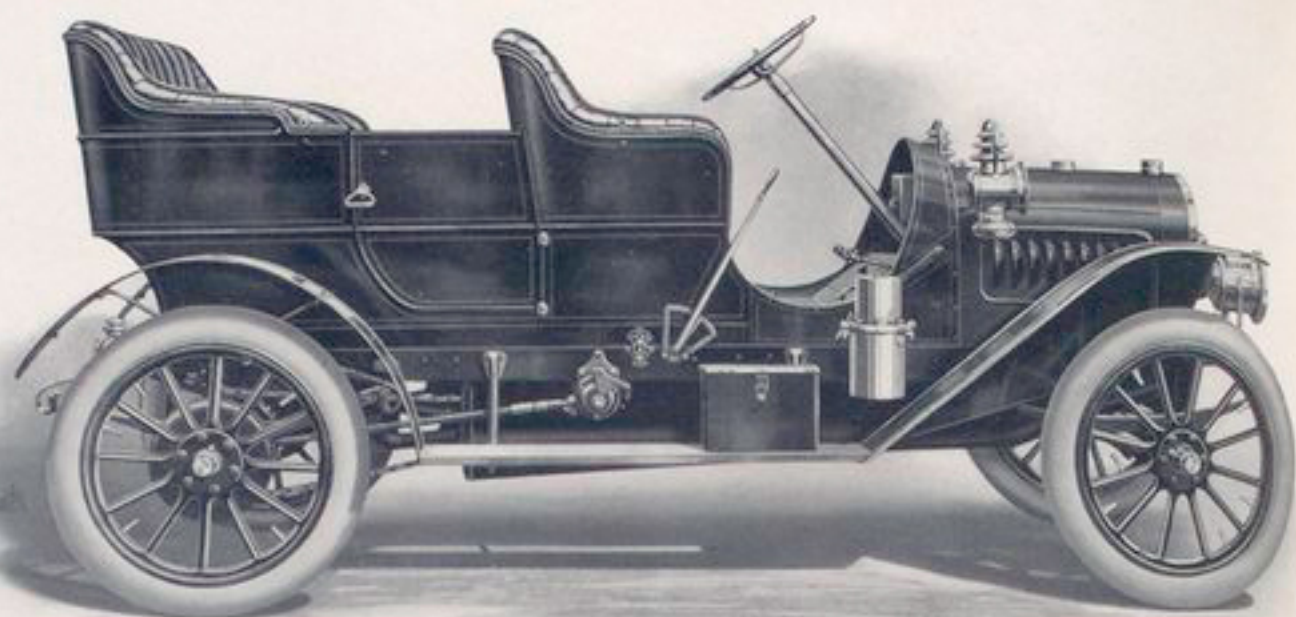
Wheel-Base	123 inches.	Transmission	Selective type, adjustable roller bearings.
Wheels	36 inches.	Drive	Shaft, straight-line.
Rims	Midgley Universal.	Brakes	Two, on rear hubs; 400 square inches surface.
Tires	36x4½-inch Goodrich Quick Detachable; options, Hartford - Dunlop, Diamond, G. & J., and Fisk Clincher.	Body	Capacity, four or five passengers; bright-finish black leather.
Springs	Front, semi-elliptic; rear, Triple-Action, 52 inches long.	Color	Dark Brewster green—black effect—striped in orange; orange wheels.
Engine	45 h. p.; four vertical cylinders, 5x5½ inches.	Equipment	Two lens mirror gas head-lights, two square oil side-lights, and tail-light, generator, horn, tools, pump, and tire-repair kit.
Valves	Overhanging, all on one side.	Price	\$2,500. Spare wheel, with inflated tire, tools, and brackets, \$85. Mohair top with side curtains, \$100.
Crank-Case	One-piece, side opening.		
Ignition	Jump spark; storage battery. Bosch magneto, \$150 extra.		



Model Forty-five Limousine

Specifications

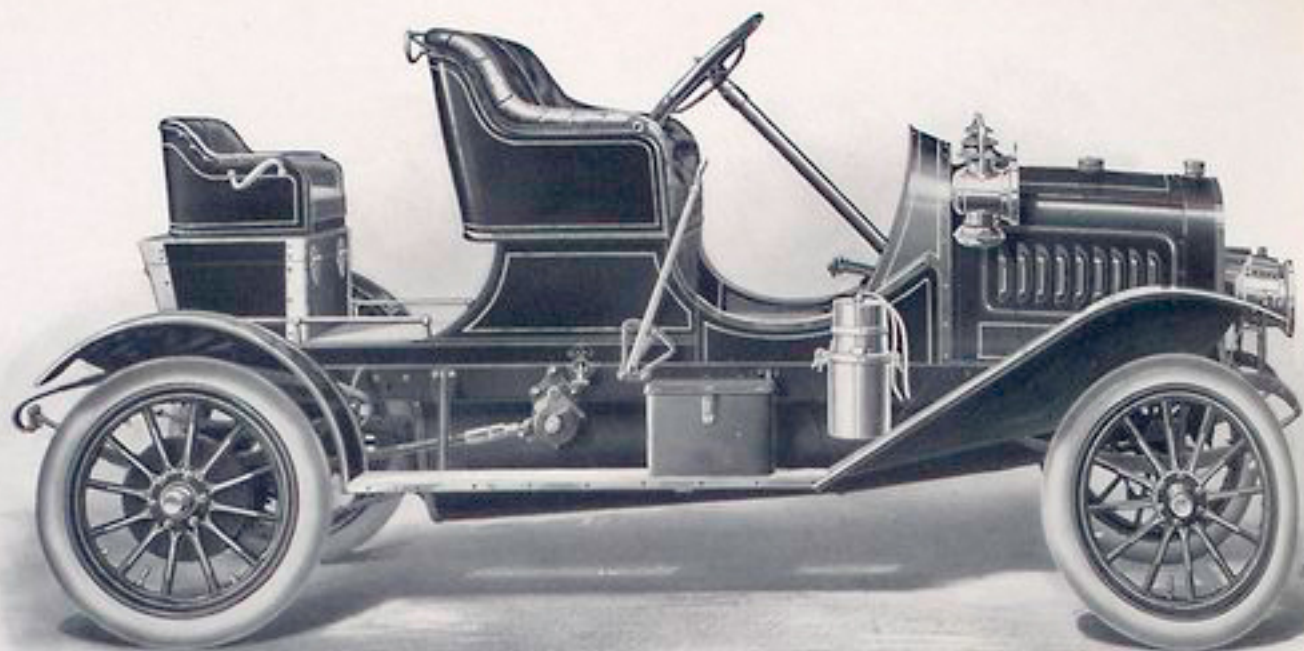
Wheel-Base	123 inches.	Transmission	Selective type, adjustable roller bearings.
Wheels	36 inches.	Body	Capacity, five passengers, with disappearing cab seat for emergency use; rear seat enclosed, richly upholstered; ceiling and sides mahogany; all windows arranged to open. Dull-finish black leather.
Tires	Same as Model Forty-five.	Color	Brewster green, cream wheels.
Springs	Front, semi-elliptic; rear, Triple-Action, 52 inches long.	Price	\$3,500. Spare wheel, with inflated tire, tools, and brackets, \$85.
Engine	45 h. p.; four vertical cylinders, 5 x 5½ inches.		
Valves	Overhanging, all on one side.		
Ignition	Jump spark; storage battery. Bosch magneto, \$150 extra.		



Model Forty-one

Specifications

Body	Detachable tonneau; five or two passengers.	Ignition	Jump spark; current from six volts, sixty ampere battery.
Wheel-Base	106 inches.	Clutch	Multiple disc, enclosed.
Rims	Midgley universal.	Equipment	Two lens mirror gas head-lights with large, separate generator, oil side- and tail-lights, exhaust signal, pump, tools, and tire kit.
Wheels	34 inches.	Color	Brewster green, with red running-gear.
Tires	34x4-inch Goodrich Quick Detachable; options, Hartford-Dunlop, Diamond, G. & J., and Fisk Clincher.	Price	\$1,350 with tonneau; \$1,250 without tonneau, and with torpedo deck.
Engine	22 h. p.; two opposed cylinders, each 5x6 inches.	Torpedo Deck Top	Extra, \$25. Extra, \$75, with side curtains and storm front.
Cooling	Water, thermo-siphon system.		
Lubrication	Mechanical force-feed oiler.		
Transmission	Planetary, enclosed, two speeds forward, and reverse.		



Model Forty-seven

Specifications

Body	Torpedo back or single Rumble Seat.	Ignition	Jump spark; current from six volts, sixty ampere battery.
Wheel-Base	102 inches.	Transmission	Planetary, enclosed, two speeds forward, and reverse.
Rims	Midgley Universal.	Clutch	Multiple disc, enclosed.
Wheels	30 inches.	Equipment	Two lens mirror gas head-lights with large, separate generator, oil side-lights, and tail-light, exhaust signal, pump, tools, and tire kit.
Tires	30x3½-inch Goodrich Quick Detachable; options, Hartford-Dunlop, Diamond, G. & J., and Fisk Clincher.	Color	Imperial blue.
Power Engine	22 h. p. Two opposed cylinders, each 5 x 6 inches.	Price	\$1,150 with torpedo back; \$1,200 with single Rumble Seat.
Cooling	Water, thermo-siphon system.		
Lubrication	Mechanical force-feed oiler.		



*Plant of Thomas B. Jeffery & Company, Kenosha, Wisconsin
The largest Automobile Factory in the world*

Branches and Representatives

BOSTON	93 Massachusetts Avenue
CHICAGO	1462-1464 Michigan Boulevard
NEW YORK	38-40 W. 62nd Street
SAN FRANCISCO	121 Valencia Street
MILWAUKEE	457-459 Broadway (Rambler Garage Company, Distributors)
CLEVELAND	2158 E. Ninth Street (Rambler Automobile Company, Distributors)

Representatives in substantially every other city
in the United States