

1909

819256

6

THE NEW  
**Rambler**



AUTOMOBILES



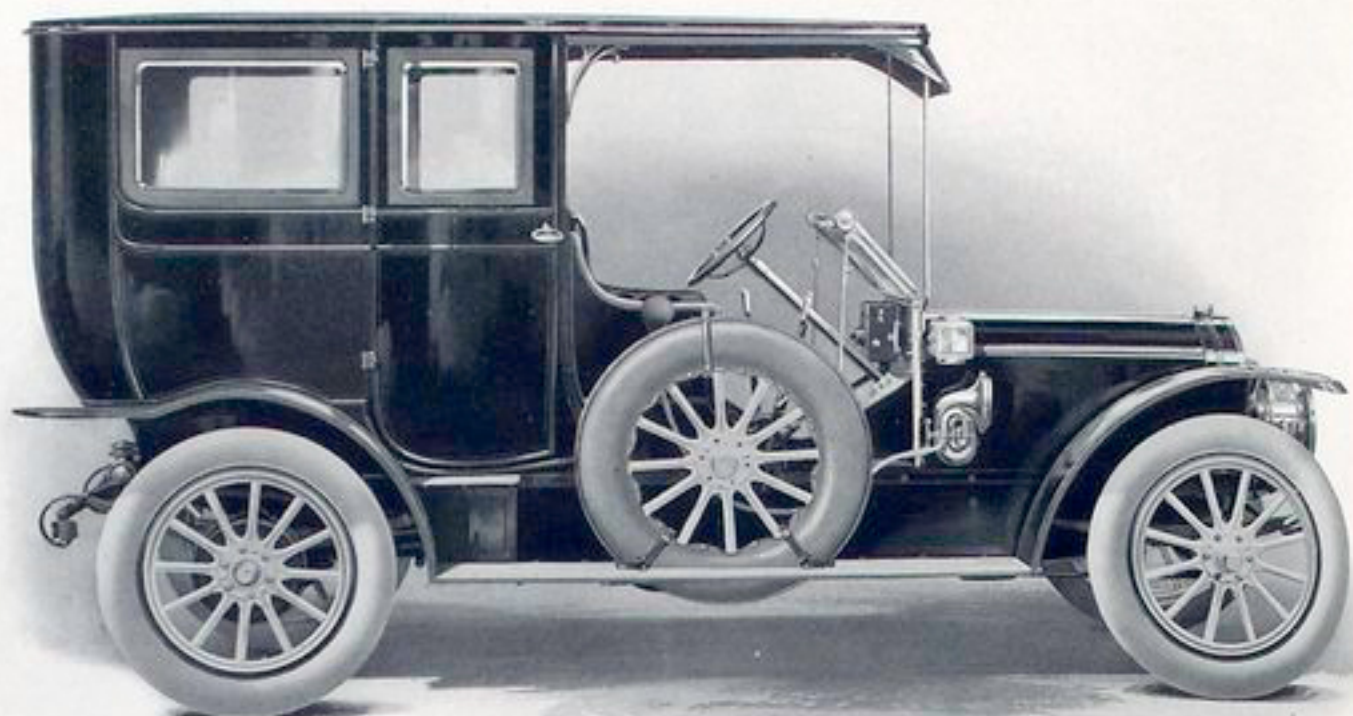
*Rambler Fifty-five*

THE NEW  
*Rambler*



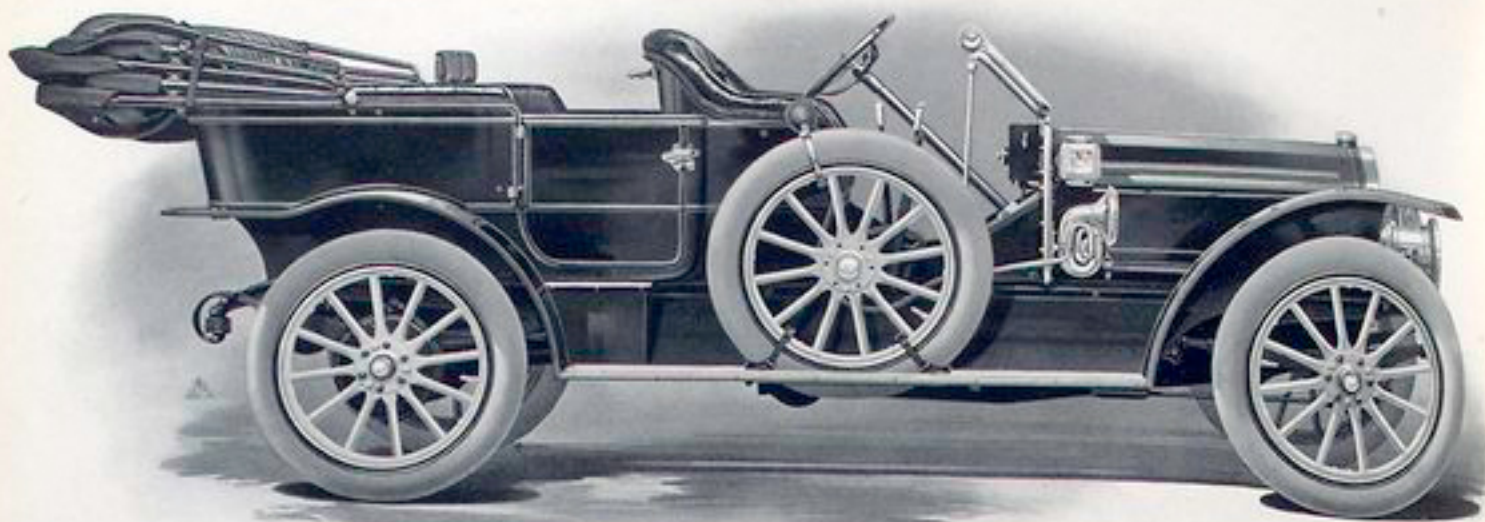
Thomas B. Jeffery & Company

Kenosha, Wisconsin, U. S. A.



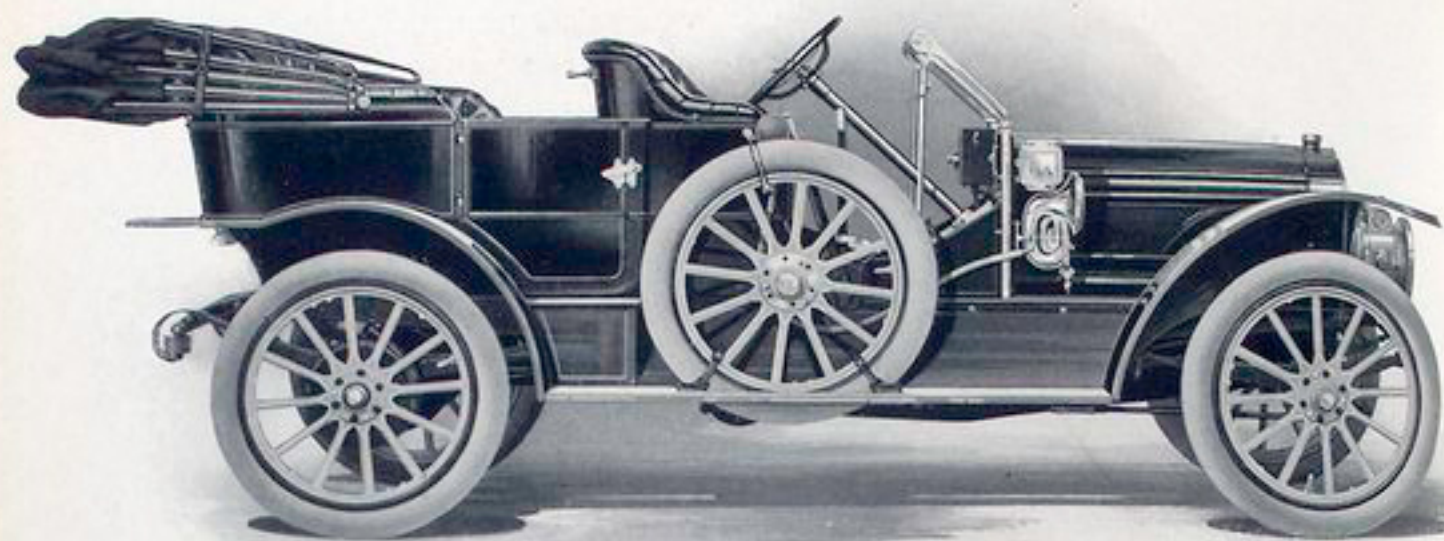
### Rambler Fifty-five Limousine

|                  |   |            |  |
|------------------|---|------------|--|
| Motor            | Four-cylinder, 5-inch bore and 5½-inch stroke, 45 horsepower.                                     | Wheel-base | 123 inches.  |
| Ignition         | Jump spark, two complete systems — magneto and 6-80 storage battery, through single set of plugs. | Springs    | Front, semi-elliptic; rear, special Rambler type of triple-action springs.                                 |
| Clutch           | Internal expanding.   | Body       | Seven-passenger; five inside. Ceiling and sides mahogany. Cushions, seat-backs and trimming, Bedford Cord. |
| Transmission     | Sliding gear, selective type, three forward speeds and reverse.                                   | Color      | Light Brewster green with cream wheels.  |
| Wheels and Tires | 36 x 5 inches, Goodrich, Diamond, G. & J., or Hartford-Dunlop.                                    | Price      | \$3,750. Spare Wheel with tire, brackets and tools, \$115.   |



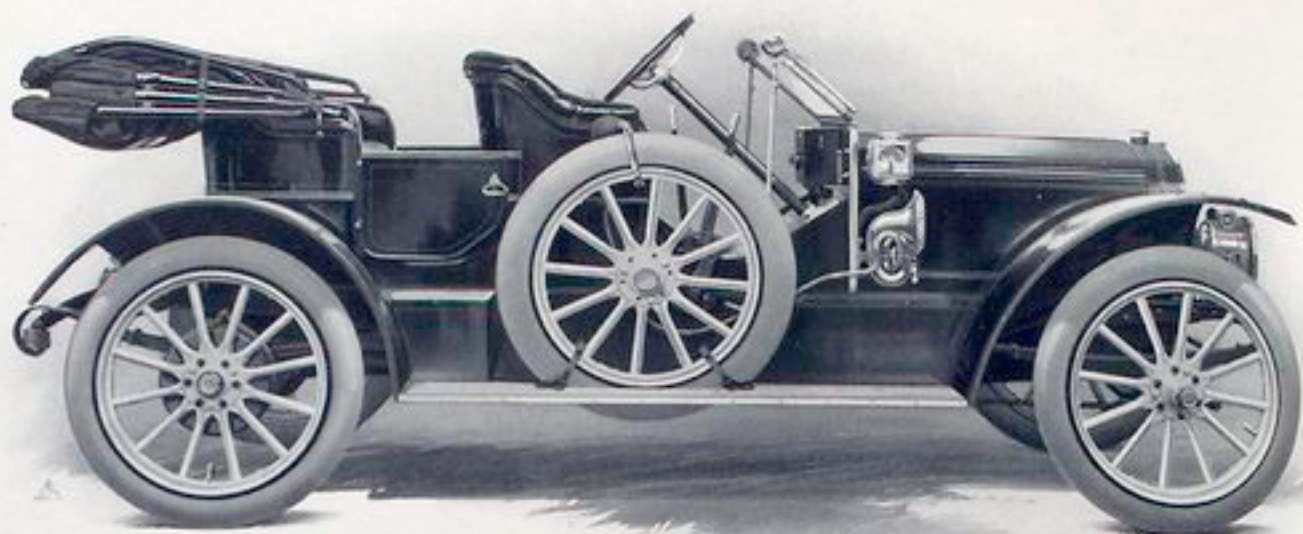
### Rambler Fifty-five

|              |   |           |  |
|--------------|---|-----------|--|
| Motor        | Four-cylinder, 5-inch bore and 5½-inch stroke, forty-five horsepower.                             | Tread     | 56-inch, option 60-inch.   |
| Ignition     | Jump spark, two complete systems — magneto and 6-80 storage battery, through single set of plugs. | Springs   | Front, semi-elliptic; rear, special Rambler type of triple-action springs.   |
| Clutch       | Internal expanding.   | Body      | Seven-passenger, very roomy, seats low, extra tonneau seats fold. Hand-buffed, long water-grain, bright-finish leather. Option four-passenger Close Coupled. |
| Transmission | Sliding gear, selective type, three forward speeds and reverse.                                   | Color     | Light Brewster green with cream wheels, for seven-passenger. Dark Brewster green with cream wheels, for Close Coupled.                                       |
| Brakes       | Two, one each external and internal, direct on drums bolted to rear wheels.                       | Equipment | Same as Fifty-four.  |
| Wheel-base   | 123 inches.   | Price     | \$2,500 for seven-passenger; \$2,350 for Close Coupled. Spare Wheel with tire, brackets and tools, \$100.  |
| Wheels       | 36 x 4½ inches, fitted with universal quick detachable rims.                                      |           |  |
| Tires        | 36 x 4½ inch, Goodrich, Diamond, G. & J., or Hartford-Dunlop.                                     |           |  |



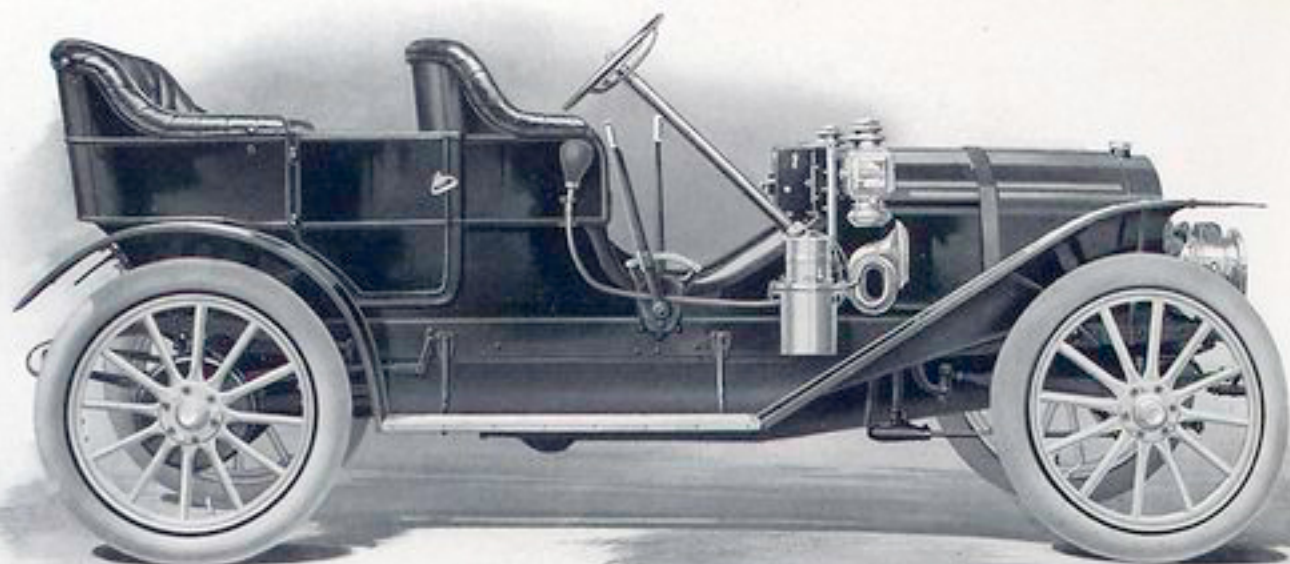
### Rambler Fifty-four

|              |  |           |  |
|--------------|--|-----------|--|
| Motor        | Four-cylinder, 5-inch bore and 5½-inch stroke, forty-five horsepower.                                | Tires     | 36x4 inches, Goodrich, Diamond, G. & J., or Hartford-Dunlop.   |
| Ignition     | Jump spark, two complete systems — magneto and 6-80 storage battery, through single set of of plugs. | Springs   | Front, semi-elliptic; rear, special Rambler type of triple-action springs.   |
| Clutch       | Internal expanding.  | Body      | Five-passenger, very roomy and low seats. Hand-buffed, long water-grain, bright-finish leather.  |
| Transmission | Sliding gear, selective type, three forward speeds and reverse.                                      | Color     | Light Brewster green with cream wheels.  |
| Brakes       | Two, one each external and internal, direct on drums bolted to rear wheels.                          | Equipment | Electric side-lamps, combination electric and oil tail-lamp, gas head-lights, option of Presto-lite tank or generator, horn, full tool equipment and jack. |
| Wheel-base   | 117 inches.  | Price     | \$2,250. Spare Wheel with tire, bracket and tools, \$85.   |
| Wheels       | 36 x 4 inches, fitted with universal quick detachable rims.  |           |  |
| Tread        | 56-inch, option 60-inch.   |           |  |



### Rambler Fifty-four Close Coupled

|              |   |            |  |
|--------------|---|------------|--|
| Motor        | Four-cylinder, 5-inch bore and 5½-inch stroke, forty-five horsepower.                             | Wheel-base | 117 inches.  |
| Ignition     | Jump spark, two complete systems — magneto and 6-80 storage battery, through single set of plugs. | Tread      | 56-inch, option 60-inch.   |
| Clutch       | Internal expanding.   | Springs    | Front, semi-elliptic; rear, special Rambler type of triple-action springs.   |
| Transmission | Sliding gear, selective type, three forward speeds and reverse.                                   | Body       | Four-passenger, with four individual seats or plain undivided rear seat.   |
| Brakes       | Two, one each external and internal, direct on drums bolted to rear wheels.                       | Color      | Light Brewster green with cream wheels.  |
| Wheels       | 36 x 4 inches, fitted with universal quick detachable rims.                                       | Equipment  | Electric side-lamps, combination electric and oil tail-lamp, gas head-lights, option of Presto-lite tank or generator, horn, full tool equipment and jack. |
| Tires        | 36x4 inches, Goodrich, Diamond, G. & J., or Hartford-Dunlop.                                      | Price      | \$2,250. Spare Wheel with tire, brackets and tools, \$85.  |



### Rambler Fifty-three

|              |   |           |  |
|--------------|---|-----------|--|
| Motor        | Four-cylinder, 4½-inch bore and 4½-inch stroke, thirty-four horsepower.     | Tread     | 56-inch, option 60-inch.   |
| Ignition     | Jump spark, magneto and dry cells. 6-40 storage battery, \$10 extra.        | Springs   | Front, semi-elliptic; rear, full elliptic with involute ends.  |
| Clutch       | Cone type, with adjustment for springs.                                     | Body      | Five-passenger, plenty of room for three in tonneau. Black, machine-buffed, dull-finish leather.                                       |
| Transmission | Sliding gear, selective type, three forward speeds and reverse.             | Color     | Dark Brewster green body with cream wheels.  |
| Brakes       | Two, one each external and internal, direct on drums bolted to rear wheels. | Equipment | Oil side and tail-lamps, gas head-lights and generator, horn, full set of tools and jack. Presto-lite tank instead of generator, \$10. |
| Wheel-base   | 109 inches.   | Price     | \$1,800. Spare Wheel with 36 x 3½-inch tire, brackets and tools, \$75.   |
| Wheels       | 36 x 3½ inches, fitted with universal quick detachable rims.                |           |  |
| Tires        | 36 x 3½ inches, Hartford-Dunlop; 4-inch rear, \$20 net, extra.              |           |  |





Plant of Thomas B. Jeffery & Company, Kenosha, Wisconsin.

Branches and Distributors:

|                         |                              |
|-------------------------|------------------------------|
| BOSTON . . . . .        | 93 Massachusetts Avenue      |
| CHICAGO . . . . .       | 1462-1464 Michigan Boulevard |
| SAN FRANCISCO . . . . . | 121-125 Valencia Street      |
| MILWAUKEE . . . . .     | 457-459 Broadway             |
| CLEVELAND . . . . .     | 65th and Euclid Avenue       |

Representatives in substantially every city  
in the United States