

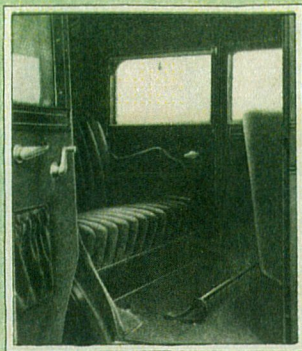


*The*

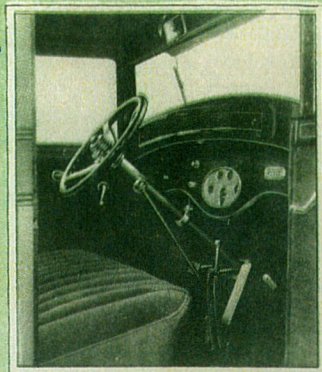
**GARDNER**

**EIGHT-IN-LINE**

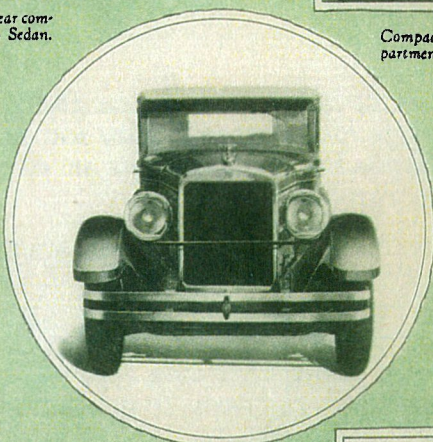
*Series*  
**75 and 80**



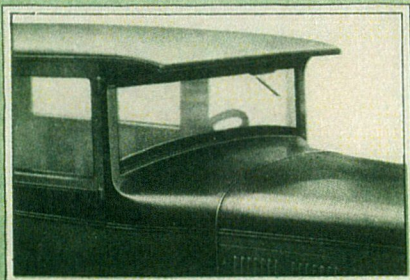
Exquisitely appointed rear compartment Series 80 Sedan.



Compact, practical front compartment Series 80 Sedan.



Head-on view of Series 80 Sedan. The beauty of its low, racy lines is enhanced by the distinctive radiator and the Gardner Griffin in full flight.



Close-up of Series 75 Sedan—Narrow corner posts.



Rear-end view of Series 75 Sedan.

## Detailed Specifications

**MOTOR**—L-head Eight-in-line, 2 $\frac{3}{4}$ -inch bore, 4 $\frac{3}{4}$ -inch stroke. 226-cubic inch piston displacement. 65 developed horsepower.

**STEERING GEAR**—Improved cam-and-lever type. Semi-irreversible.

**GASOLINE SYSTEM**—Vacuum feed from large tank at rear of chassis. Schebler carburetor with Swan manifold to equalize distribution of gases.

**COOLING SYSTEM**—Thermostatic control. Centrifugal pump. Water forced completely around all cylinders. Fedders cellular-type radiator. 4-blade, self-oiling fan. Fan mounted on adjustable bracket.

**CLUTCH**—Easy operating Borg & Beck dry disc.

**TRANSMISSION**—Selective sliding-gear type. Nickel-steel gears. Three speeds forward—one reverse.

**FRONT AXLE**—Drop-forged I-beam, extra heavy for front wheel brake equipment. Tapered roller bearings in wheels.

**REAR AXLE**—Semi-float type with one-piece pressed steel housing. Nickel spiral bevel gears. Tapered roller bearings thruout.

**SPRINGS**—Special balloon type—semi-elliptic.

**BRAKES**—Enclosed brakes on all four wheels. Perfectly balanced equalization. Emergency brake operates on transmission.

**ELECTRICAL SYSTEM**—Remy-Delco ignition. Two-unit starting and lighting. Prest-O-Lite battery.

**LUBRICATION**—Full force feed to main and connecting rod bearings by means of gear-driven pump. Pressure gauge on instrument board.

**INSIDE FINISH AND UPHOLSTERY**—Sedan: Genuine mohair in French plaits; latest design silver-finished hardware; dome light; distant control locks on doors; silk window curtains; arm rests. Roadster: Genuine leather to harmonize with body finish.

**OUTSIDE FINISH**—Two-tone lacquer.

**WHEELS**—Wood, to conform to body color.

**WHEELBASE**—122 inches.

**FRAME**—Extra heavy-gauge pressed steel—7-inch section. Tubular cross-members.

**STANDARD EQUIPMENT—Series 75:** Gasoline strainer. Thermostat. Snubbers all around. Clear-vision V. & V. ventilating windshield. Gasoline gauge on dash. Mohair upholstery with French-type plaiting. Enclosed 4-wheel brakes. 30 x 5.25 balloon tires. Headlights with double-filament bulbs. Stop light. Automatic windshield wiper. Distant control locks for all doors. Butler silver-finished hardware. Two-tone lacquer paint. Nickel radiator. Handsome Griffin insignia on radiator cap. Instruments grouped under single glass panel on dash and indirectly lighted. Ignition lock. Genuine full walnut steering wheel. Heat indicator on dash. Fedco Theft-Proof numbering system with Loss-of-Use insurance.

**STANDARD EQUIPMENT—Series 80:** Clear-vision V. & V. ventilating windshield. Gasoline gauge on dash. Chase mohair upholstery with French-type plaiting. Walnut panels on instrument board and window ledges. 4-wheel brakes. 30 x 6.00 balloon tires. Tire cover. Snubbers all around. Bumpers of handsome, heavy construction front and rear. Automatic centralized chassis lubrication system (manufactured by Alemite). Air cleaner. Gasoline strainer. Oil filter. Thermostatic heat control. Special vibration dampener. Headlights with double filament bulbs. Rear-vision mirror. Stop light. Automatic windshield wiper. Distant-control locks for all doors. Butler silver-finished hardware. Two-tone lacquer paint. Nickel radiator. Handsome Griffin insignia on radiator cap. Instruments grouped under single glass panel on dash and indirectly lighted. New-type ignition lock. Genuine full walnut steering wheel. Heat indicator on dash. Fedco Theft-Proof numbering system with Loss-of-Use insurance.

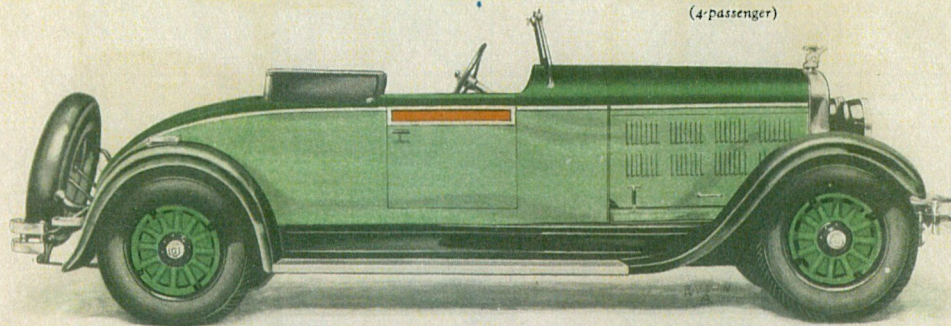
(Specifications subject to change without notice)

THE GARDNER MOTOR CO., INC., ST. LOUIS, U. S. A.

Distributed by



The New Gardner  
Eight-in-line 80  
ROADSTER  
(4-passenger)



DISTINCTIVELY DIFFERENT! That's the story of the New Gardner 75 and the New Gardner 80! No other words can tell it.

Everything about these New Gardner *Eights-in-line* is distinctively different. You sense that distinctive difference the minute you see them. You feel it as you slip behind the wheel. It grows upon you as the months slip by.

And it keeps on growing on you!

Each time you take the wheel, you enjoy that first-car thrill all over again. You just know heads are turning to follow your swift passage down the street. You experience a new feeling of effortless driving as you swing along thru crowded traffic and then into a convenient parking place, with only one hand on the wheel. There's a secure sense of safety as you scoot around sharp curves at high speed without the slightest rolling, slipping or sideway.

Nor is that all!

You know that your car is in tune with the spirit of today and the mode of tomorrow. For these New Gardner *Eights-in-line* are distinguished by coach-work of that unmistakable dignity heretofore found only in a few costly cars. They are trimmed, appointed and equipped with the good taste of the Paris mode. And inside are the comforts of home!



And more than that!

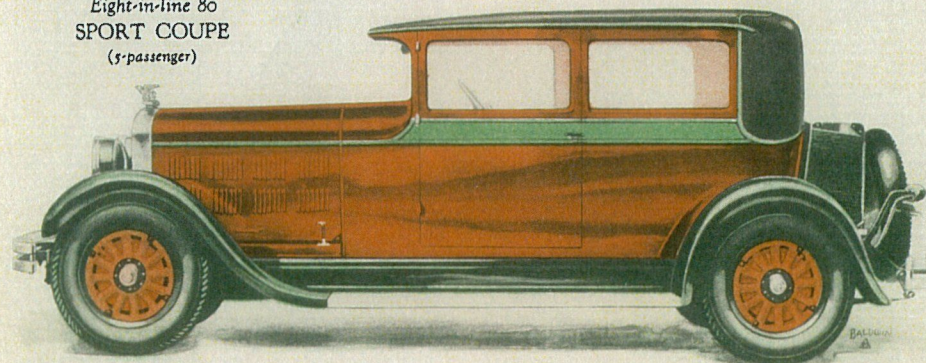
Each of these New Gardners is powered by a marvelously smooth  $2\frac{3}{4} \times 4\frac{3}{4}$  *Eight-in-line* motor and numbers among its many advancements such modern developments as a new-type safety chassis with double-drop frame, low center of gravity and extra heavy tubular cross-members—a clutch soft as velvet—enclosed 4-wheel brakes—clear-vision bodies and scores of other similar features.

Each is so scientifically engineered and so solidly built that all doors open and close easily even with one wheel elevated ten inches higher than the others. Think how such rigidity prolongs the life of the car and eliminates squeaks and rattles.

And still the story is only half told!

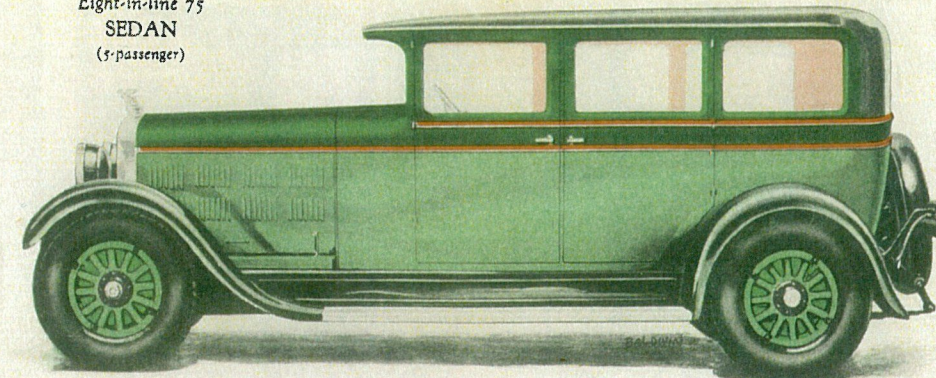
For in the Series 75 is provided a full-size, 4-door, 5-passenger *Eight-in-line* Sedan at \$1490 f. o. b. factory—and this Sedan carries as standard such equipment as mohair upholstery with French-type plaiting, distant control locks for all doors, thermostat, snubbers, Fedco Theft-Proof numbering system with Loss-of-Use insurance.

The New Gardner  
Eight-in-line 80  
SPORT COUPE  
(5-passenger)



Same body type (4- or 5-passenger)  
also furnished in Series 75.

The New Gardner  
Eight-in-line 75  
SEDAN  
(5-passenger)



Same body type also available in Series 80.

Also available in the Series 75 is a beautifully designed 5-passenger Sport Coupe of the same quality and carrying the same equipment as the Sedan, but selling at an even lower price—\$1475 f. o. b. factory.

To really know the Gardner 75 and the Gardner 80, you must drive them. Only with your own hands can you have tangible evidence of their remarkably easy steering. Only the cars themselves can demonstrate to you their amazing smoothness, speed, pick-up and power. Only your own eyes will tell you of their fashionable foreign lines and enchanting colorings.

If you would like to experience again that delightful thrill your very first car gave you, drive a Gardner 75 or 80—today!

By standardizing the *Eight-in-line* field as other makers long ago standardized the Six field, Gardner has placed the smooth, satisfying brilliance of the *Eight-in-line* within your easy reach. Gardner's complete line now comprises four series of *Eights-in-line*—the 75, 80, 85 and 90—at prices ranging from \$1475 to \$2475, f. o. b. St. Louis.