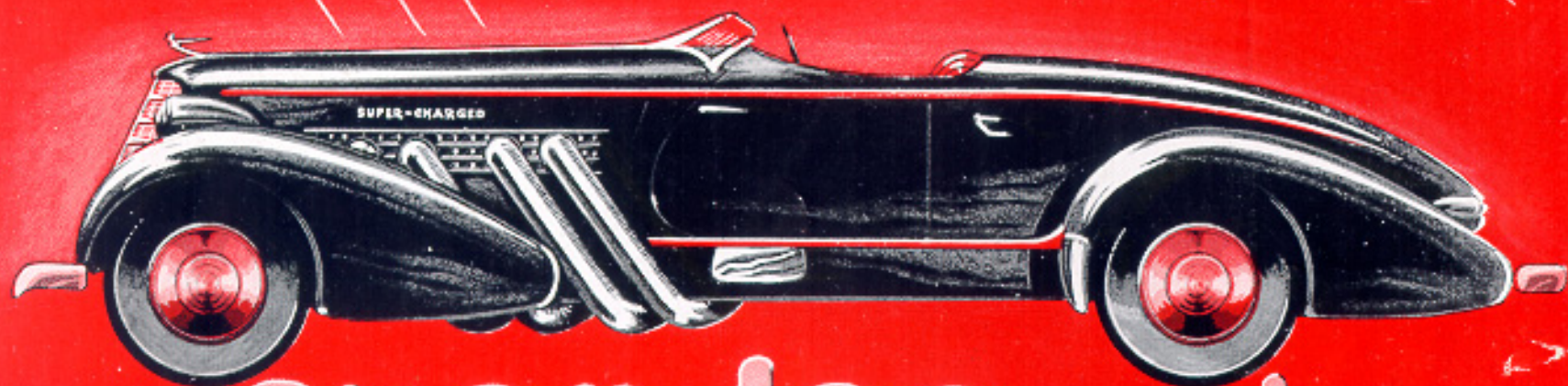


SUPER · CHARGED



over 100 m.p.h.

A U B U R N

## EXPLAINING THE AUBURN

# SUPER-CHARGER

### CARBURETOR

Air is drawn through the carburetor where it is mixed with gasoline—then the mixture goes on to the Super-Charger.

### SUPER-CHARGER

This is the Super-Charger itself, where the mixture from the carburetor is whirled around and around at high speed. In addition to being thoroughly mixed for better burning, it is thrown outward with force, or pressure into the intake manifold.

GASOLINE  
SUPPLY

AIR CLEANER

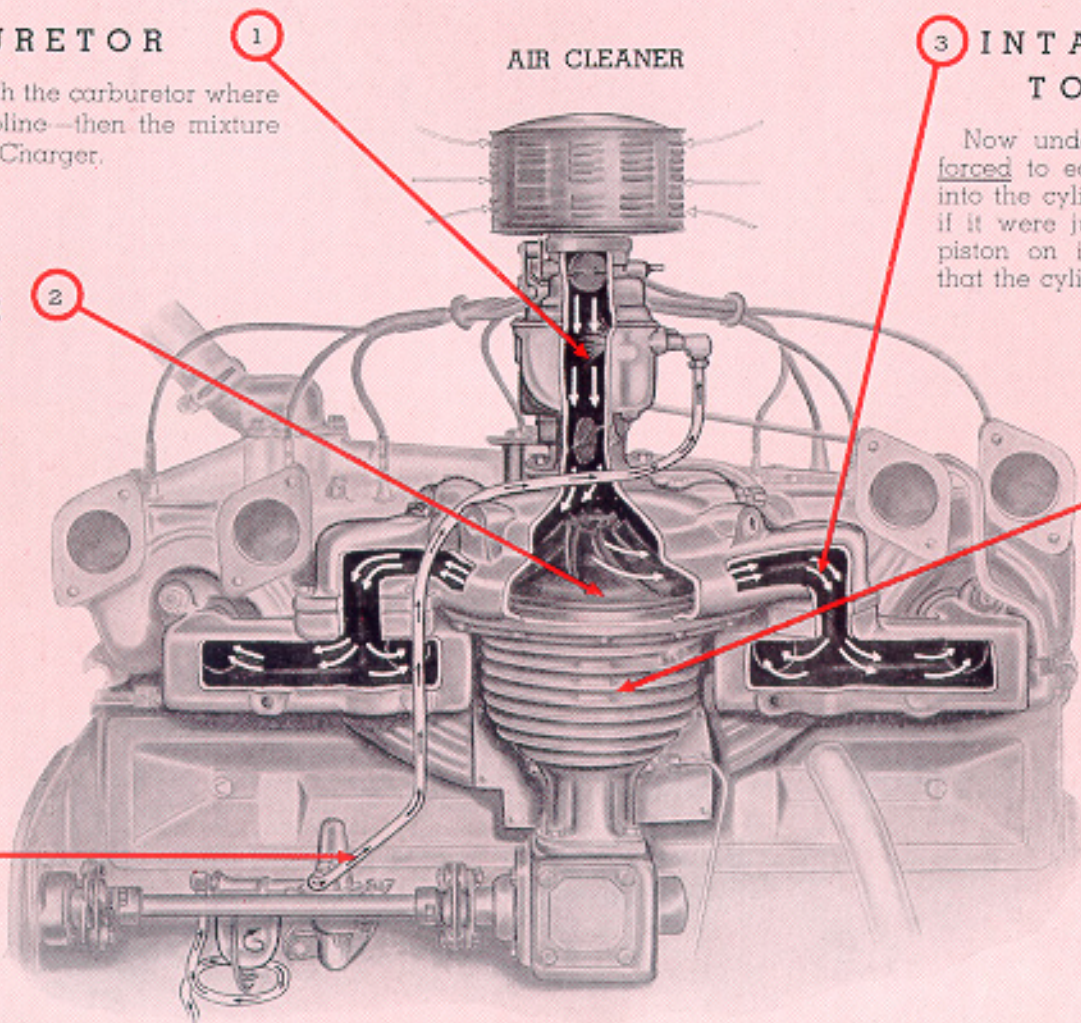
### INTAKE MANIFOLD TO CYLINDERS

Now under pressure, the gas mixture is forced to each cylinder. Naturally it goes into the cylinder faster under pressure than if it were just following the suction of the piston on its down-stroke. The result is, that the cylinders are not only fully charged with explosive gas, but Super-Charged—and that means super-power.

### PERFECTED MECHANISM

The necessary rotor speed (six times engine speed or as much as 24,000 revolutions per minute) is obtained by steel rollers instead of ordinary gears. No noise, or rapid wear—just smooth rolling contact, like a well-oiled roller bearing in a big electric fan.

Built like a watch, but as rugged as a steam turbine—that means dependability.

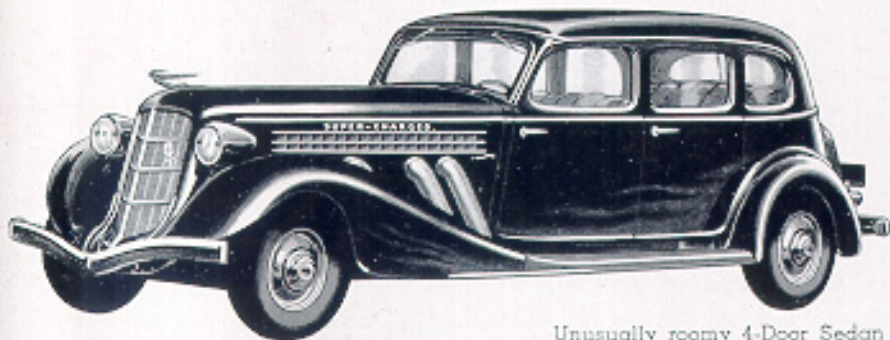


6

EIGHT CYLINDER

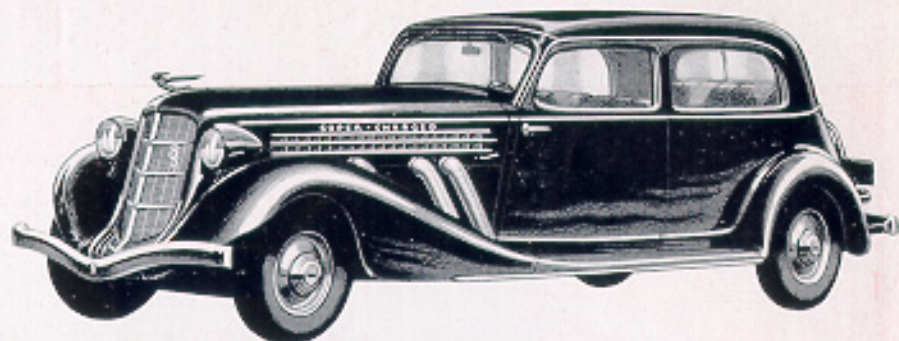
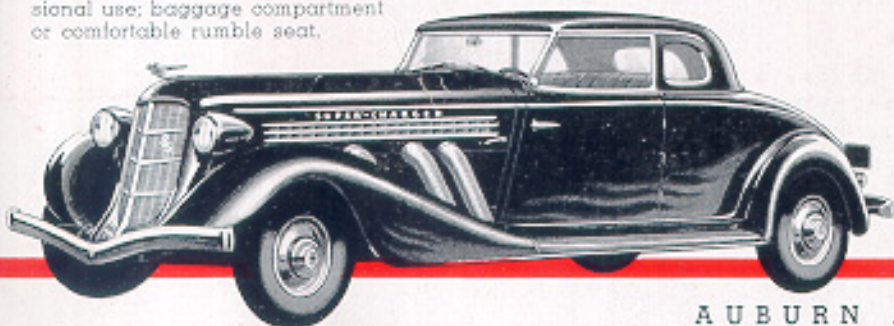
## SUPER-CHARGED MODELS

In one of these New Auburn Super-Charged Models you enjoy that complete assurance which comes only when you know you are driving the King of the Highway. Its 150 H.P. Engine is merely loading at "60". A vast reserve of power, priceless in emergencies.

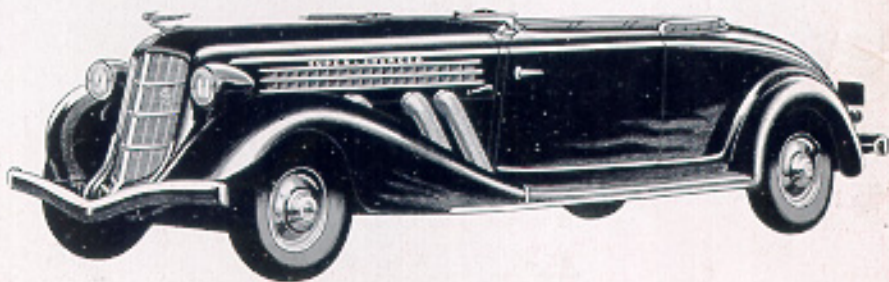


Unusually roomy 4-Door Sedan that comfortably seats six. The Super-Charger adds to its performance, efficiency and dependability.

Smart Coupe Model for personal, or business and professional use; baggage compartment or comfortable rumble seat.



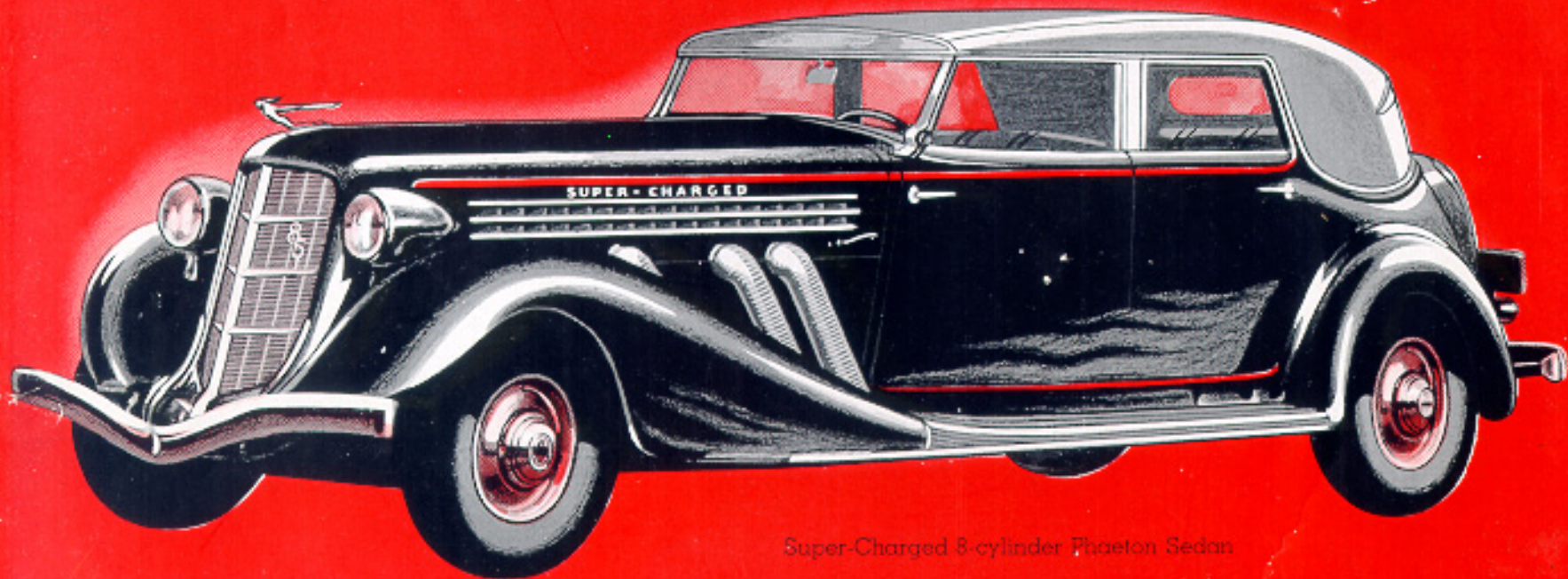
Two-door Brougham, with exceptionally wide doors for easy entrance. Plenty of leg room and head room. Driver's seat adjustable. Unit-weld all steel body; individually controlled ventilation.



Convertible Cabriolet; a chummy all-weather car for people who are "going places." May be completely open or completely closed. Room for three in front; rumble seat for additional passengers.

Racy Super-Charged Speedster (Illustration on cover)

AUBURN AUTOMOBILE COMPANY, AUBURN, INDIANA



Super-Charged 8-cylinder Phaeton Sedan

