

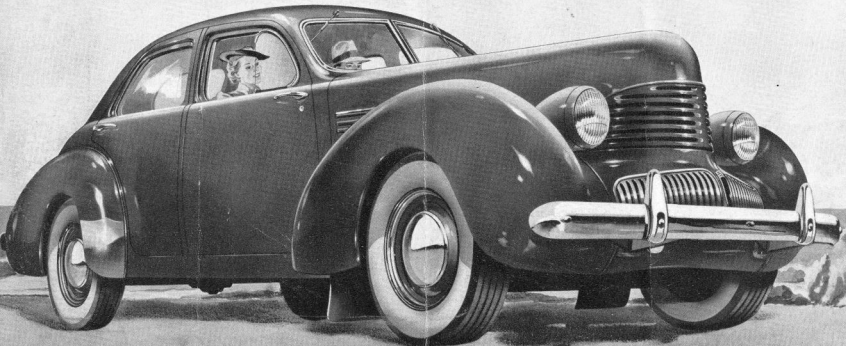
Graham... FOR 1940

WILLYS ILLINOIS COMPANY
MICHIGAN AVE. AT 26th STREET
CHICAGO, ILL. CAL. 5181

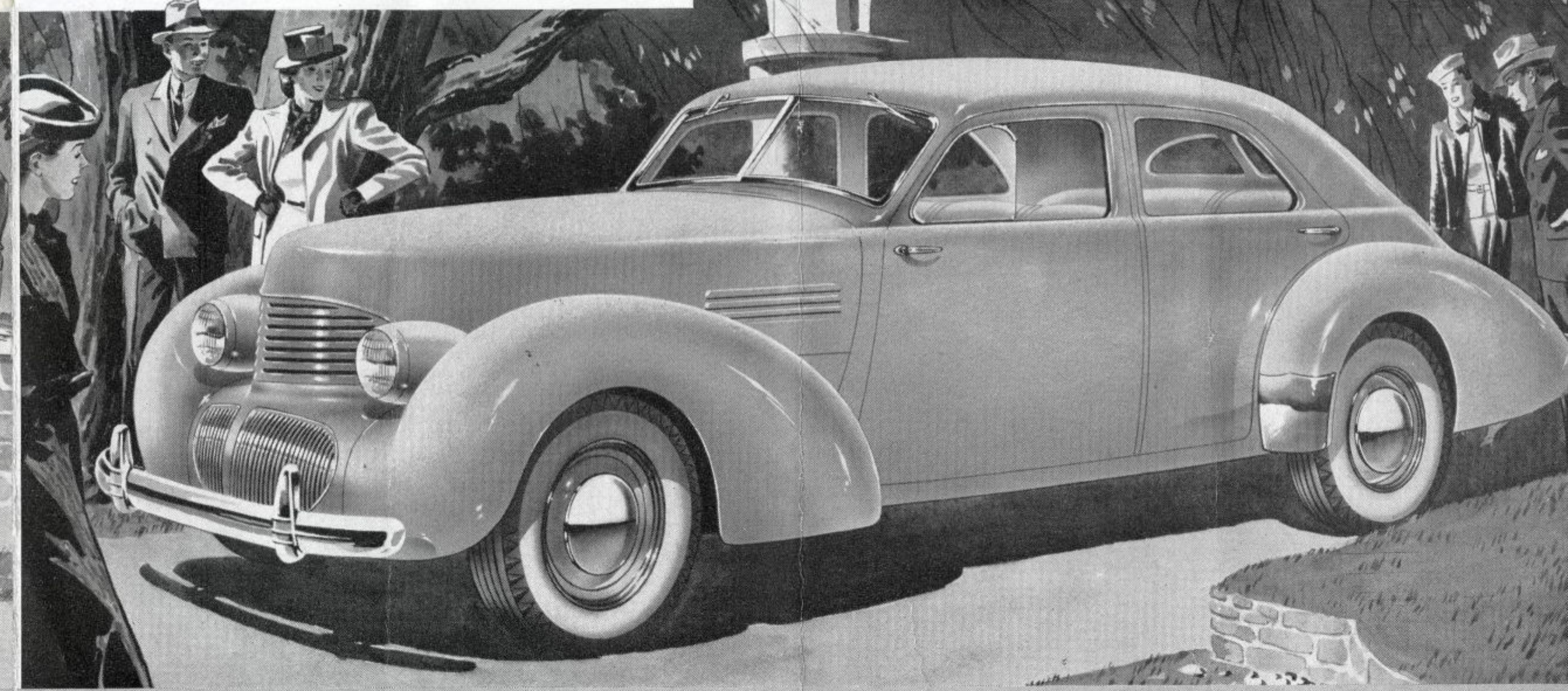
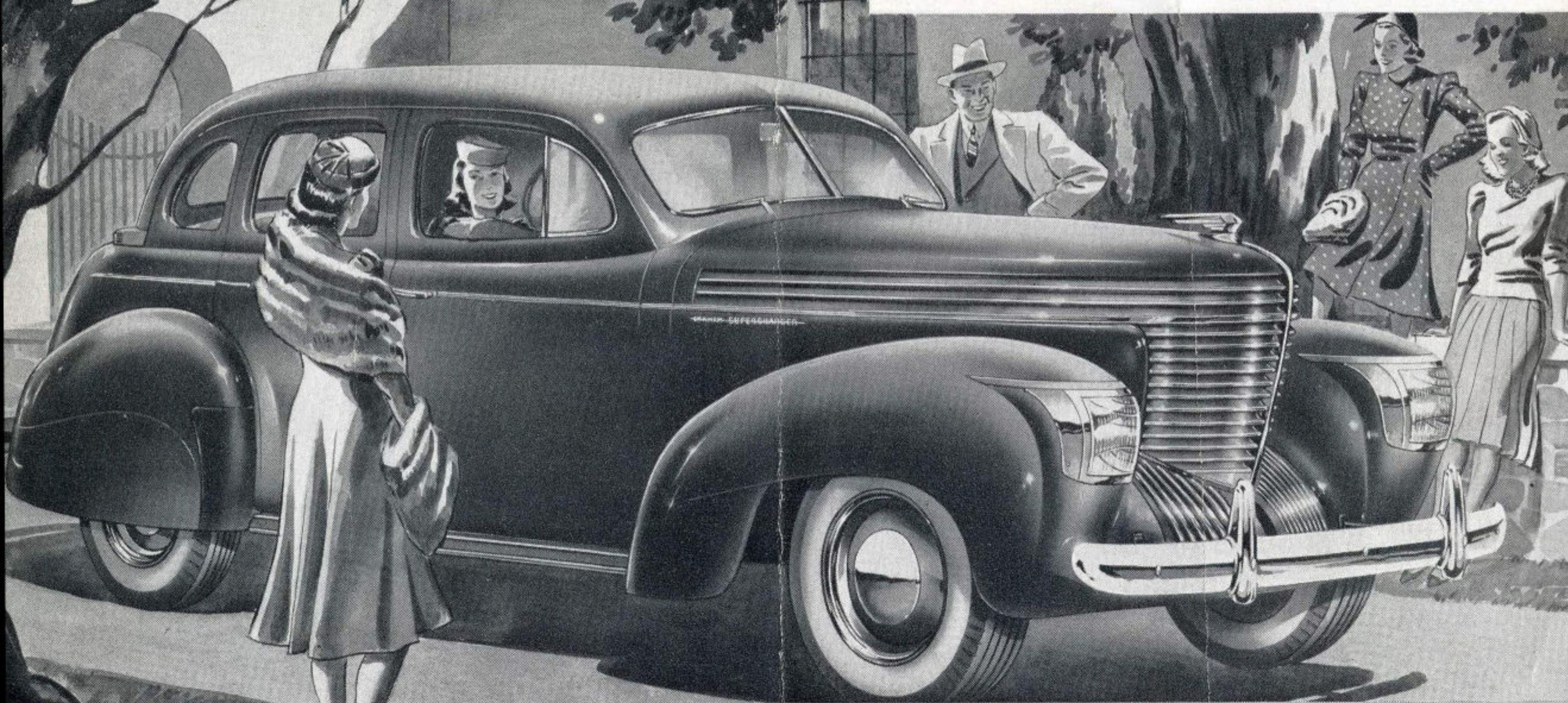
H. Stuecker



Graham...FOR 1940

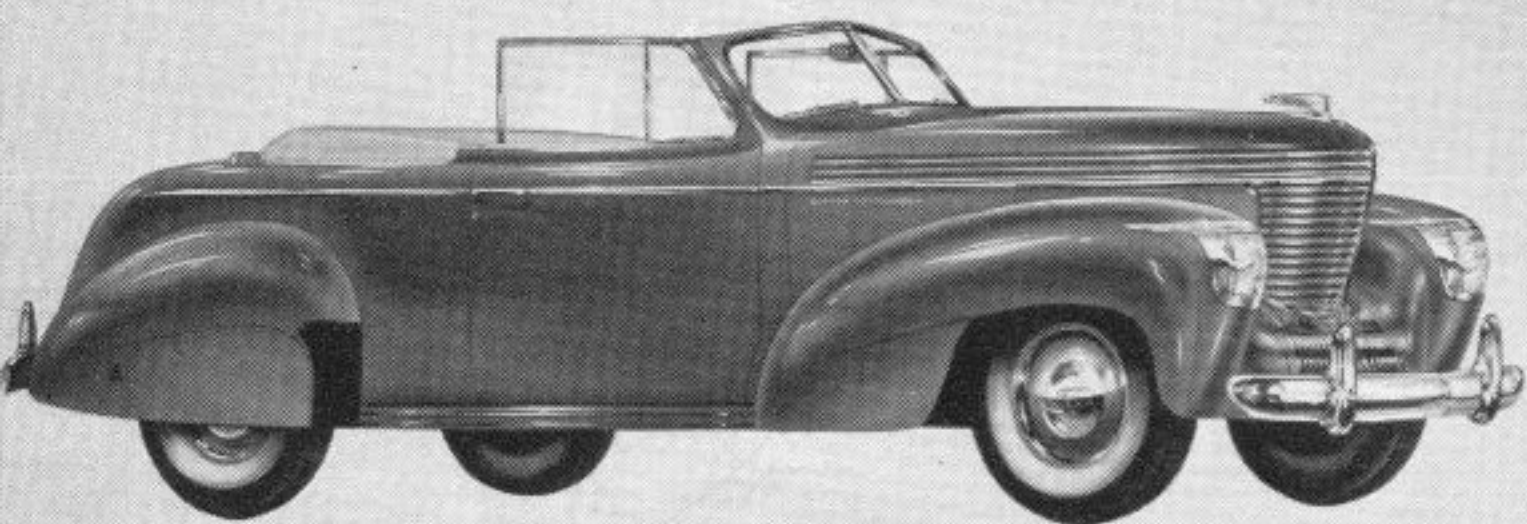


Styled FOR SLEEK, MODERN BEAUTY...
ELEGANCE... LUXURIOUS COMFORT

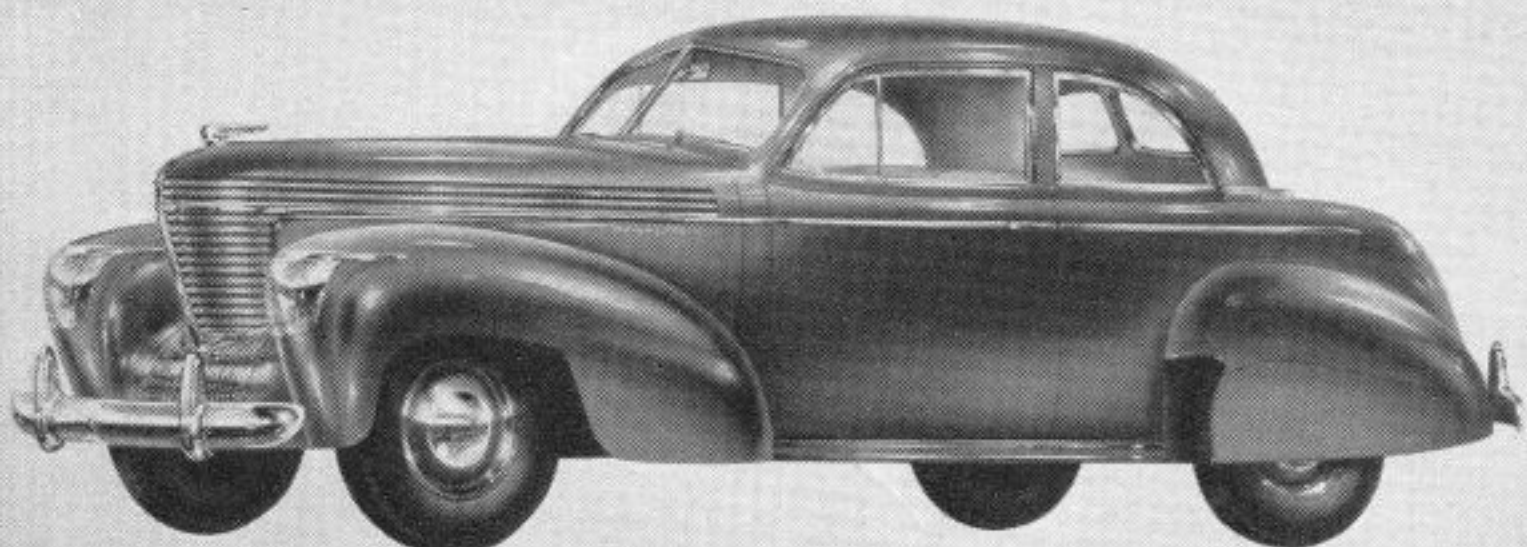


Graham-Engineered for Fast, Smooth, Powerful Performance and Outstanding Economy

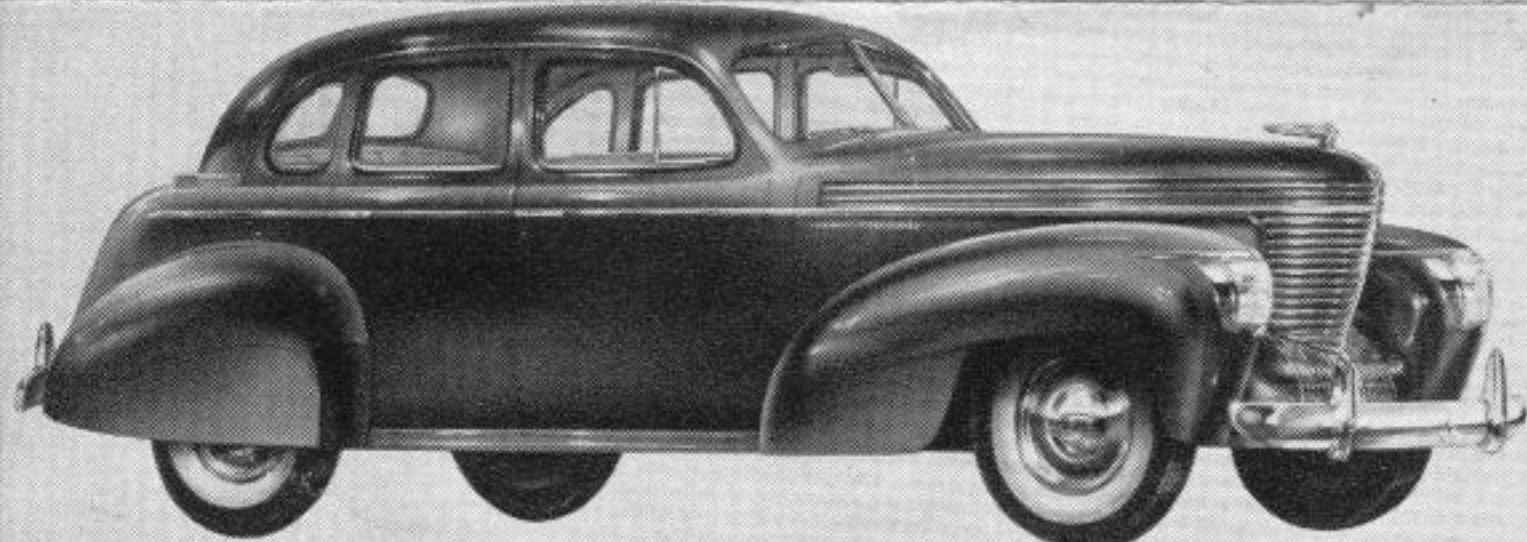
THE NEW *Graham* FOR 1940



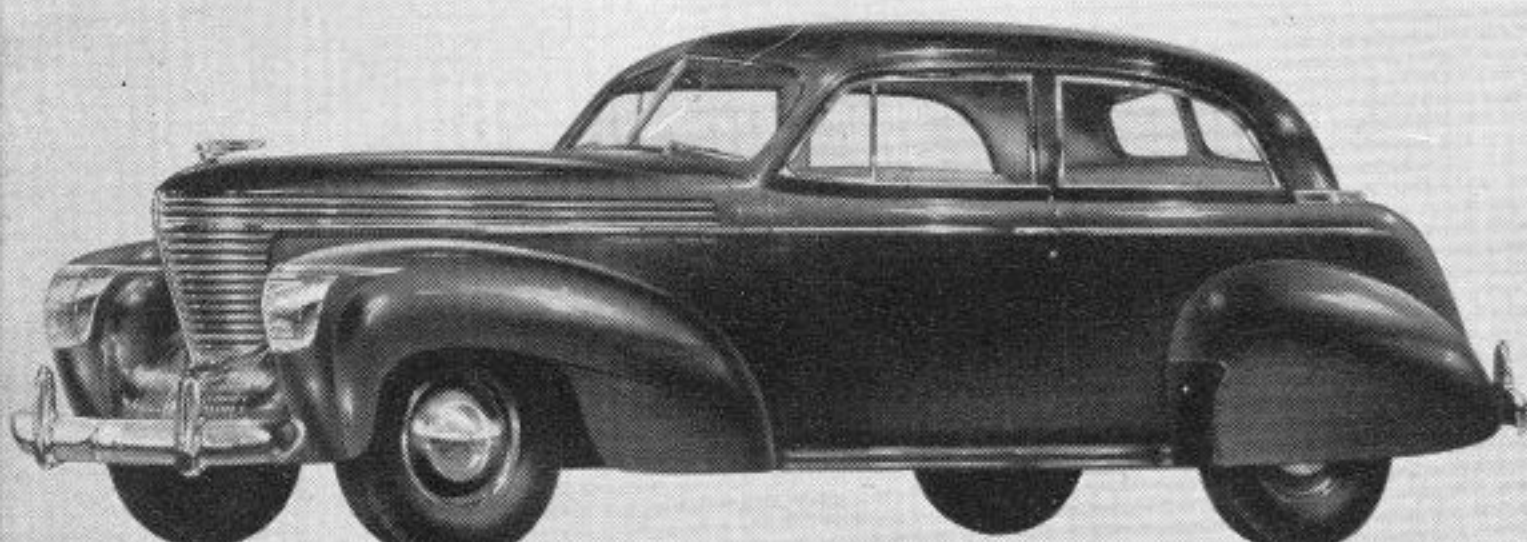
THE *Graham* CONVERTIBLE COUPE



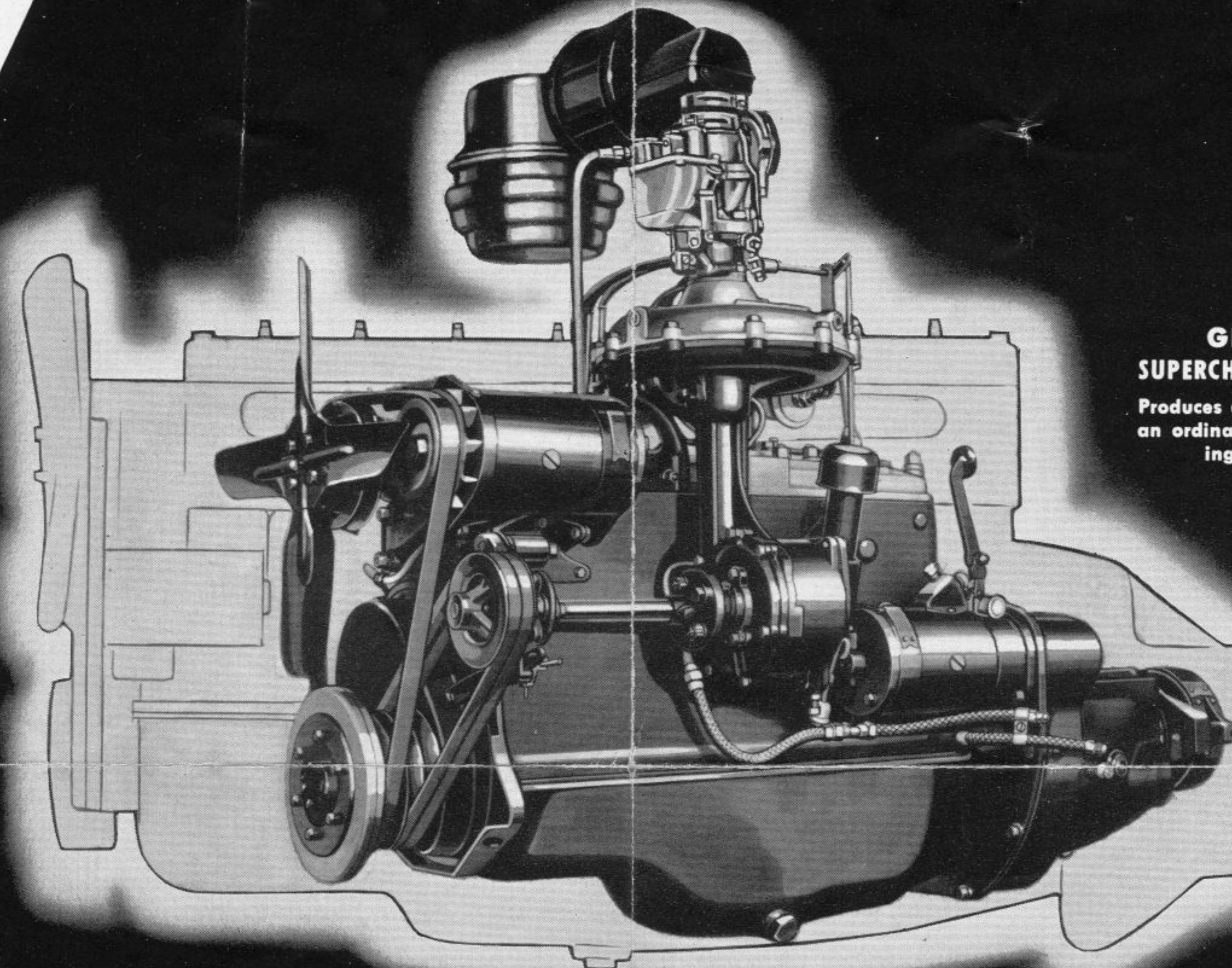
THE *Graham* COMBINATION COUPE



THE *Graham* FOUR DOOR SEDAN

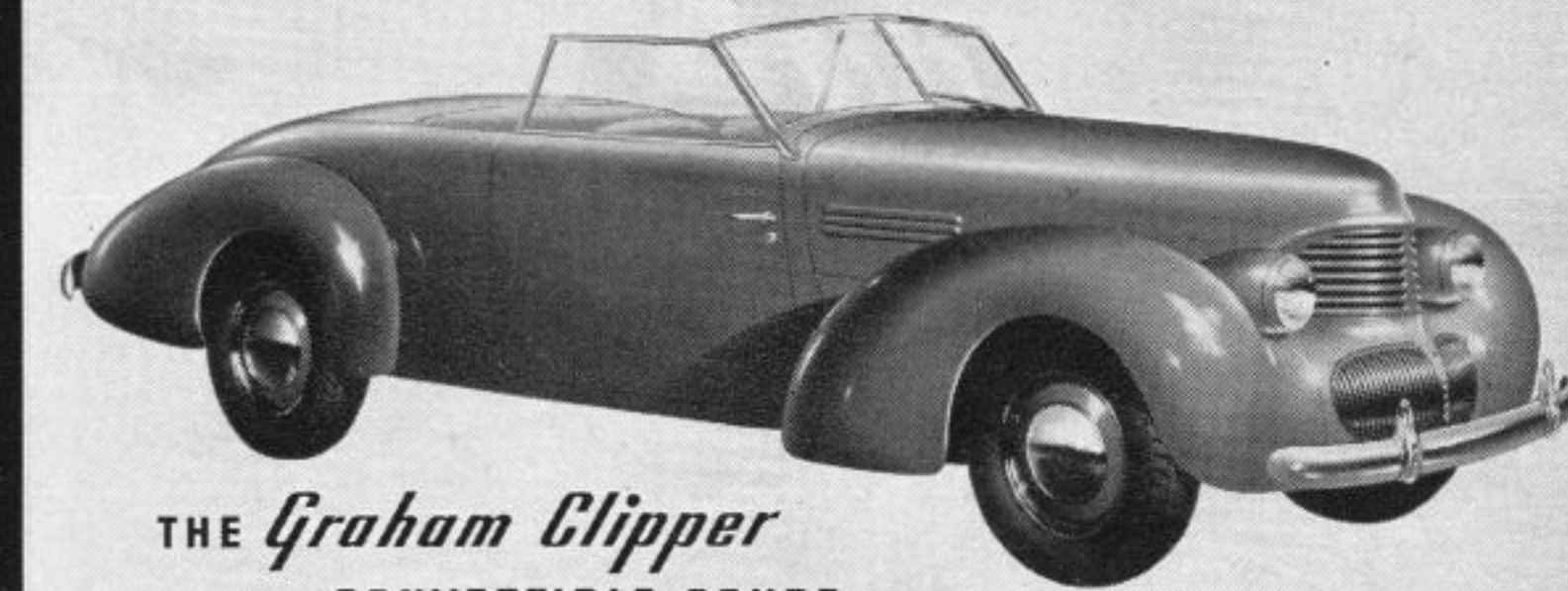


THE *Graham* TWO DOOR SEDAN

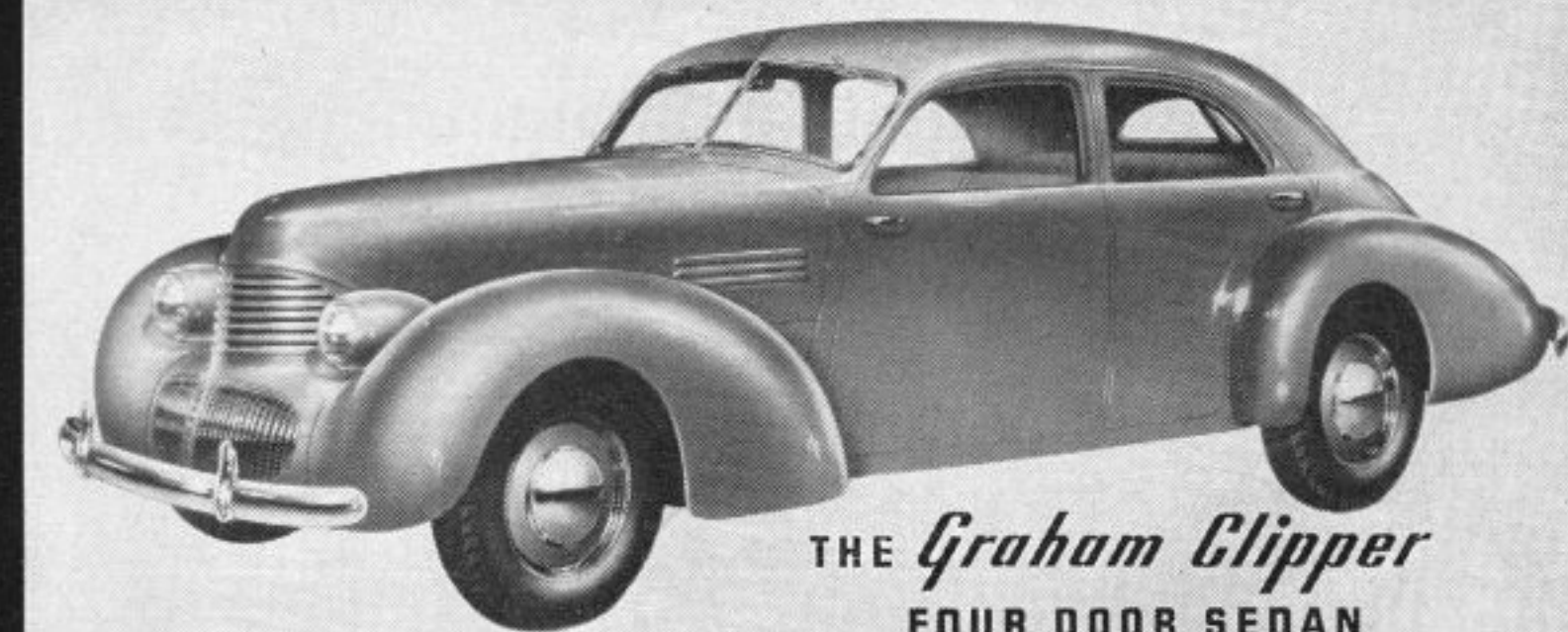


GRAHAM SUPERCHARGED ENGINE

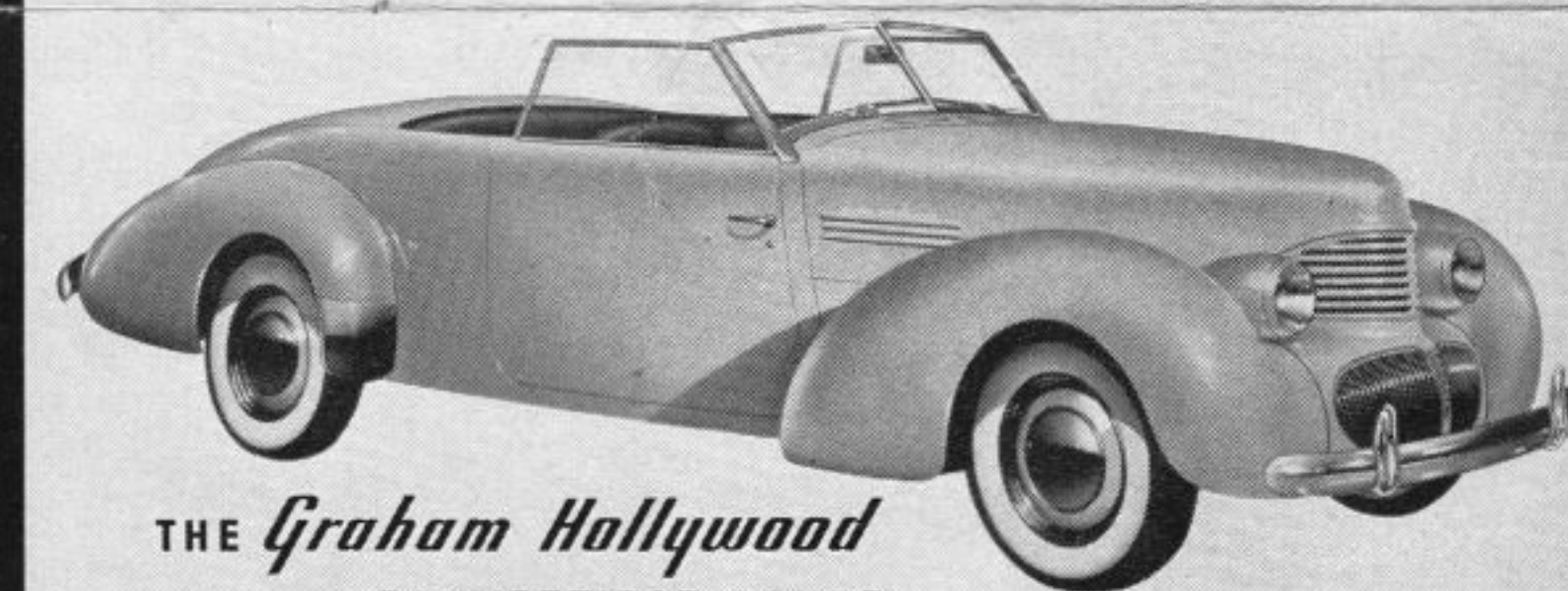
Produces as much power as an ordinary engine weighing 30% more.



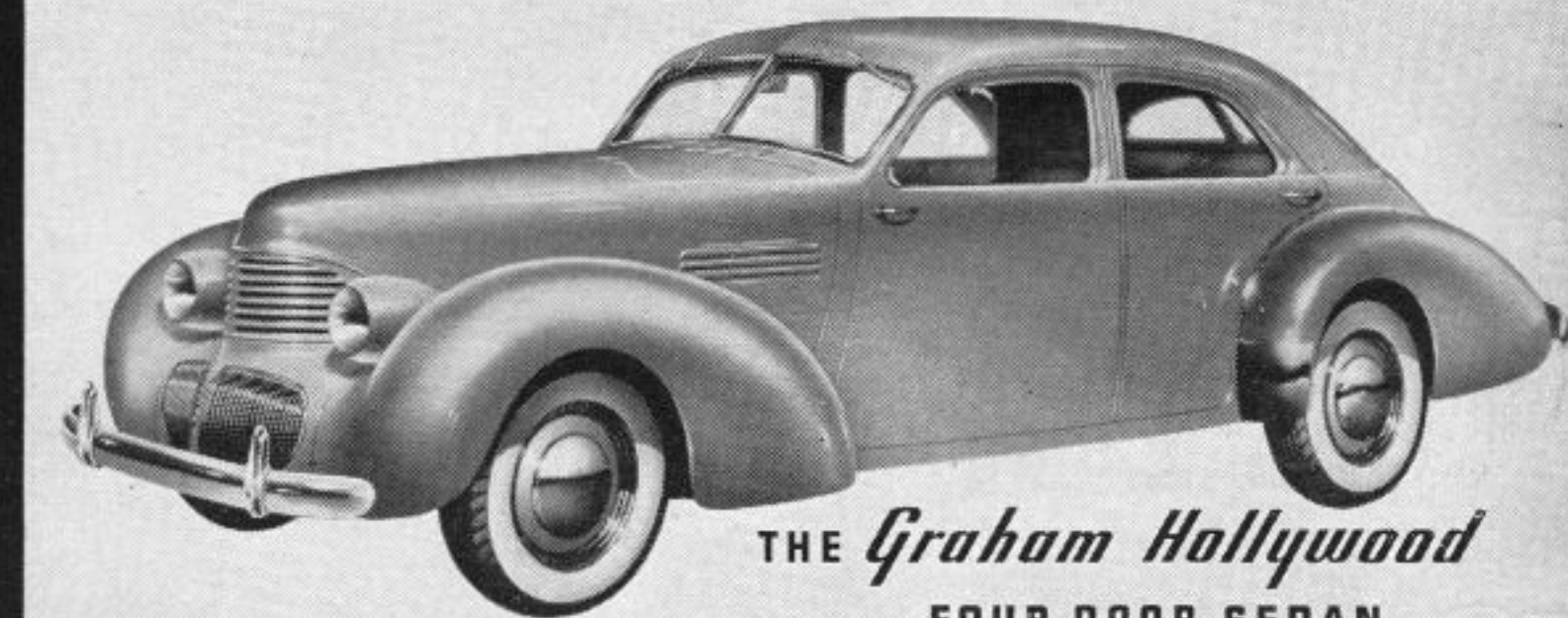
THE *Graham Clipper* CONVERTIBLE COUPE



THE *Graham Clipper* FOUR DOOR SEDAN

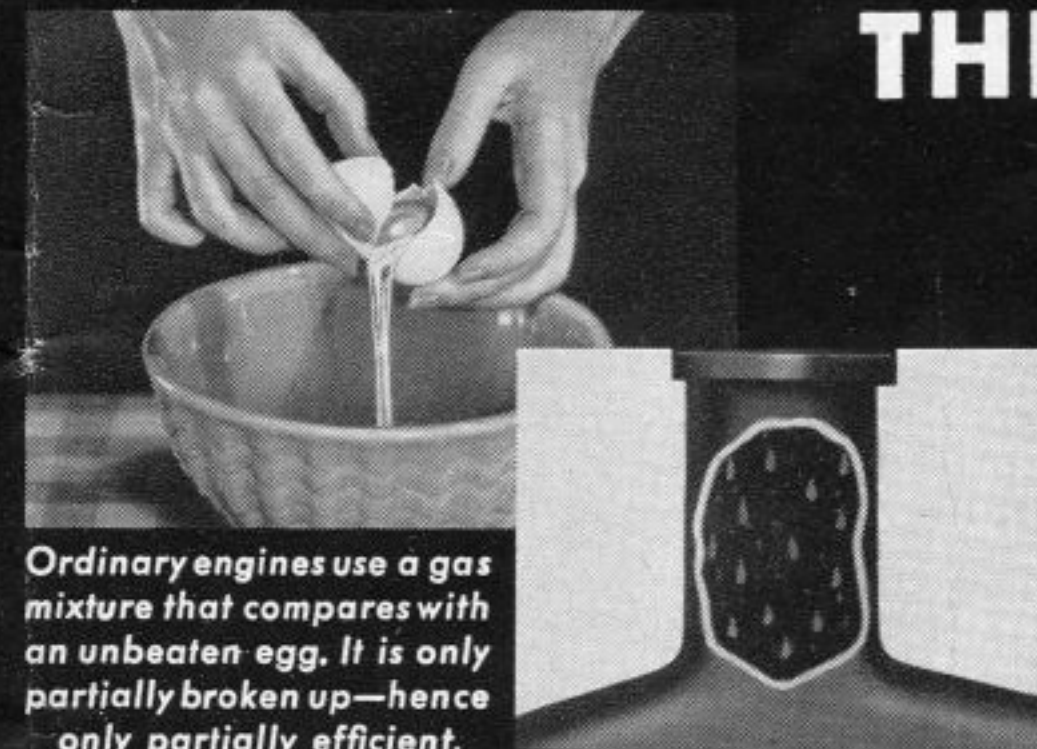


THE *Graham Hollywood* CONVERTIBLE COUPE



THE *Graham Hollywood* FOUR DOOR SEDAN

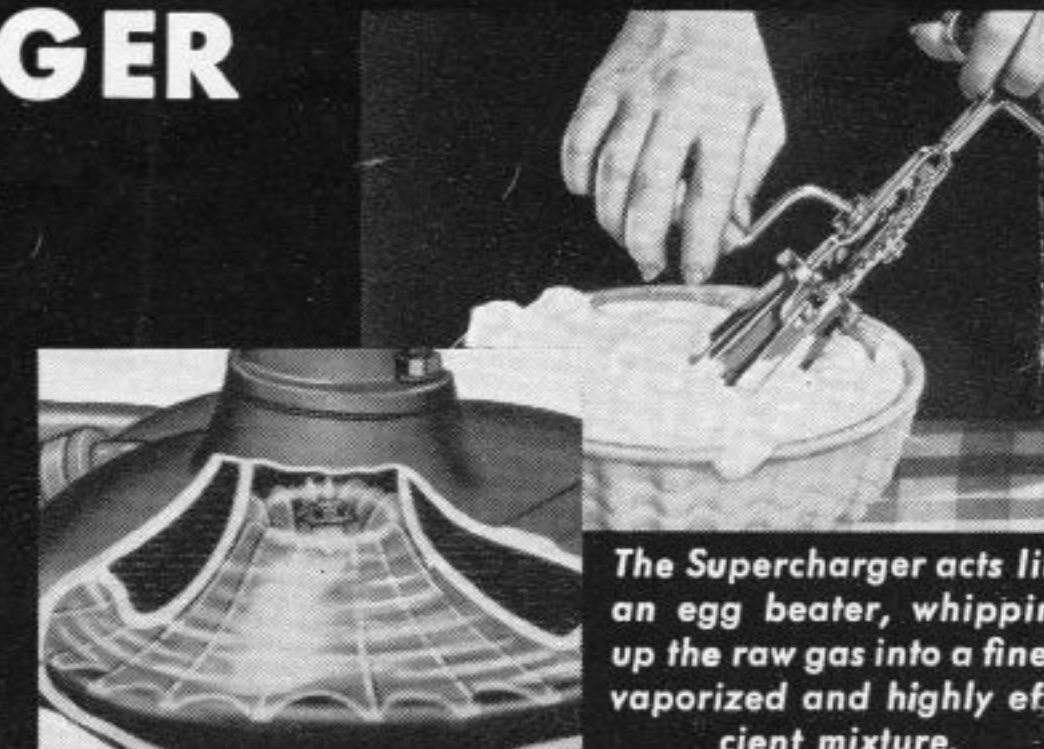
THE GRAHAM SUPERCHARGER



Ordinary engines use a gas mixture that compares with an unbeaten egg. It is only partially broken up—hence only partially efficient.

On land, on sea, and in the air, supercharged engines hold all records for performance, speed and economy in fuel consumption.

Graham makes Supercharged performance available to motorists at ordinary car cost!



The Supercharger acts like an egg beater, whipping up the raw gas into a finely vaporized and highly efficient mixture.

• Distinctive, smart, harmonious in every line and detail, Graham is still the Style Leader. You'll be proud to own one of these truly different cars—proud of its striking beauty, its sparkling performance. . . . And the Graham "Triple-Sealed" motor, with Instantaneous Cylinder Wall Lubrication, Full Length Water Jackets, and other famous Graham features, is your assurance of long-lasting, trouble-free performance.

IN AN ORDINARY ENGINE, the fuel is drawn through the carburetor directly to the cylinders by piston suction.

In a Supercharged engine, gas from the carburetor goes into the supercharger, where the rotor, revolving at 5.75 times engine speed, mixes air with the gas and forces this leaner, more efficient mixture evenly into all cylinders.

Because every cylinder receives an even fuel charge, and because a leaner, more efficient fuel mixture is used, the Graham supercharged engine produces *more power on less gas* than any unsupercharged engine of comparable size and weight!

Others may make economy "claims," but Graham's economy has been proved in actual competition. The Graham Supercharger is National A.A.A. Economy Champion by virtue of winning the Gilmore-Yosemite Economy Sweepstakes three years in a row. No other car in motoring history has ever won this classic two years in succession—yet Graham won it *three times* in succession!

Put Graham's claims to the test. Experience first hand the utterly different brand of performance obtainable from the Graham Supercharger. You will be amazed with the increased Economy, Power, Acceleration, and all-round Engine Efficiency.

• Exciting—gay—carefree! The Graham Clipper and the Graham Hollywood models are fitting companions to the Graham master line. You'll be thrilled with the dashing lines of these sleek, low-slung beauties. . . . You will thrill, too, to their sparkling performance. For they, too, are powered with the famous Graham motor, built in the great modern Graham plant to the exacting demands of Graham engineers and Graham artisans.