

Adventure... with

Elegance!



Dual-Motors Corporation is making it possible for people of discrimination to possess a limited-production motor car, designed with complete distinction to gratify their previously unfulfilled desire for an automobile with a sparkling blend of Italian imagination and American practicality!

The new *DUAL-GHIA* reflects the master coachwork of Carrozzeria-Ghia of Torino, Italy, whose custom creations have consistently been acclaimed in the leading salons and automobile shows of two continents.

Power plants and chassis components by America's finest engineering talent provide exciting performance, dependability, servicability, comfort and security.

DUAL-GHIA

4-PASSENGER CONVERTIBLE COUPE

PRICES and EQUIPMENT*

Factory Delivered Price \$7946.00
(Price includes all U. S. Government Excise Taxes
and U. S. Customs Import Charges.)

EQUIPMENT:

Power-Flite Transmission
Power Steering
Power Brakes
Power Windows
Radio—Philco Electric-Touch Tuner
Heater
Electric Clock
Back-up Lights
Goodyear Nylon Super-Cushion Tires
Custom Wheel Covers
Upholstery—English Leather
Undercoating

REPRESENTATIVE:

The foregoing prices do not include State or local taxes, or transportation charges.

*All prices, charges and specifications subject to change without notice.

DUAL-GHIA MOTORS

Division of

SANDERS MOTORS, INC.

735 PORT WASHINGTON BLVD.

Port Washington, N. Y.

Port Washington 7-3565

Many European auto makers and members of the nobility, demanding special distinction, have commissioned Carrozzeria-Ghia to design their cars. Now these famed designing arts have been combined with the finest American mechanical craftsmanship to create the *DUAL-GHIA*.

You are cordially invited to see these fine automobiles at Sanders Motors, Direct Factory Distributors.

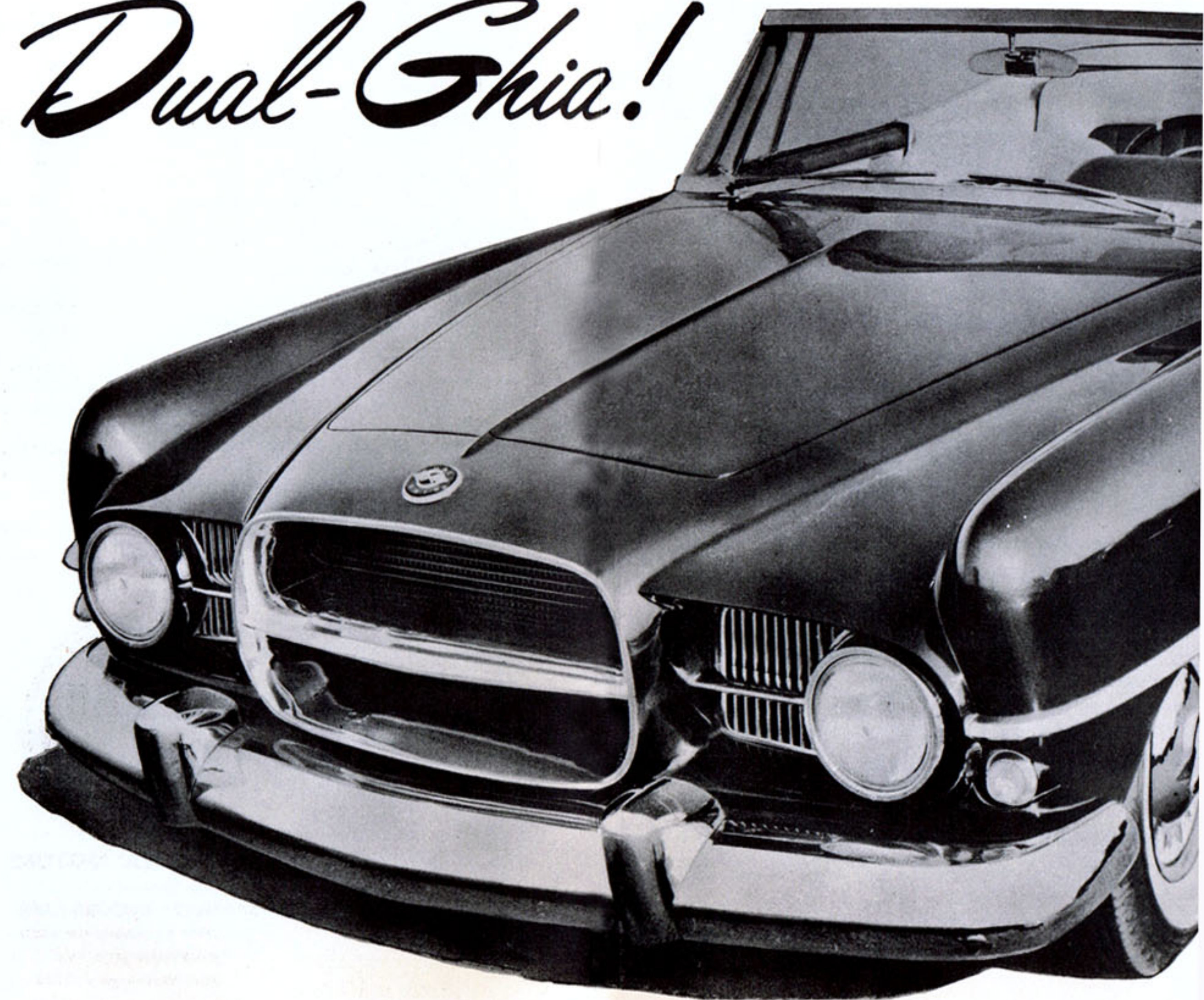
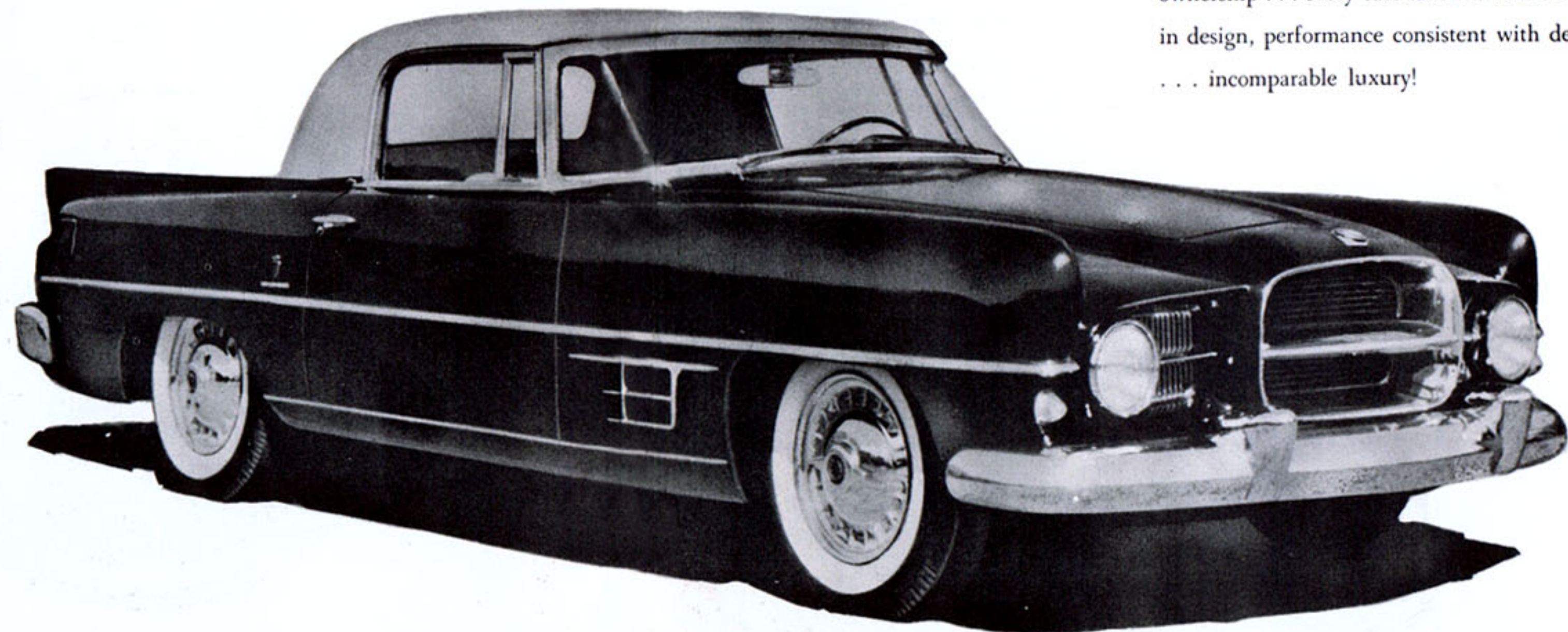
Directions:

25 minutes from N.Y.C. Grand Central Parkway to exit No. 27. Follow sign to Port Washington.

Train — Take L.I.R.R. at Penn Station to Port Washington (only 25 minutes). Call Port Washington 7-3565

truly a custom car... Dual-Ghia!

Pride in craftsmanship to inspire pride in ownership . . . every care taken to achieve refinement in design, performance consistent with design . . . incomparable luxury!



CUSTOM SPORTS-CAR STYLING WITH 4-PASSENGER COMFORT AND UTILITY!

SPECIFICATIONS

and

APPOINTMENTS

BODY STYLES: 4-passenger Convertible Coupe;

ENGINES: "Firebomb" V-8 Engine, 4-barrel carburetor, integral automatic choke, dual oil bath air cleaners, full-flow oil filter, dual exhausts . . . , 4-barrel carburetor, hemispherical combustion chamber

TRANSMISSION: Power-Flite fully automatic torque converter . . . instantaneous passing gear

CHASSIS: Double channel box section X-member frame with all-steel body welded integrally

SUSPENSION: Front: independent lateral control coil springs with Oriflow shock absorbers mounted in center. Rear: parallel longitudinal leaf semi-elliptic steel springs with direct acting straddle-mounted Oriflow shock absorbers

BRAKES: New PowerSmooth braking system . . . hydraulic, internal expanding with Cycle-Bond lining . . . Easi-Lock independent parking brake

TIRES: Goodyear Custom Nylon Super-Cushion white sidewall tubeless tires, size 6.70 x 15

RADIO: Philco Electro Touch Tuner

STEERING: Symmetrical Idler Arm steering linkage

EXTERIOR DIMENSIONS: 115 in. wheelbase . . . overall length, 204 in., overall width 78 in., overall height 52 in., ground clearance 6 in.

ELECTRICAL SYSTEM: 6-cell, 12 volt, 60 ampere hour capacity . . . variable speed windshield wipers

FUEL CAPACITY: 20 gallons



DUAL-GHIA MOTORS

Division of

SANDERS MOTORS, INC.

735 PORT WASHINGTON BLVD.

Port Washington, N. Y.

POrt Washington 7-3565

Four-passenger comfort is enhanced by the finest 'color-tailored' genuine leather, foam and coil cushions, full deck carpeting . . . performance is translated by the domed instrument cluster framed in tooled chrome . . . super-scenic windshield with swept-back corner posts . . . everything to assure comfort and safety, and to add luxury and dignity to the sport and adventure of the highway!

