

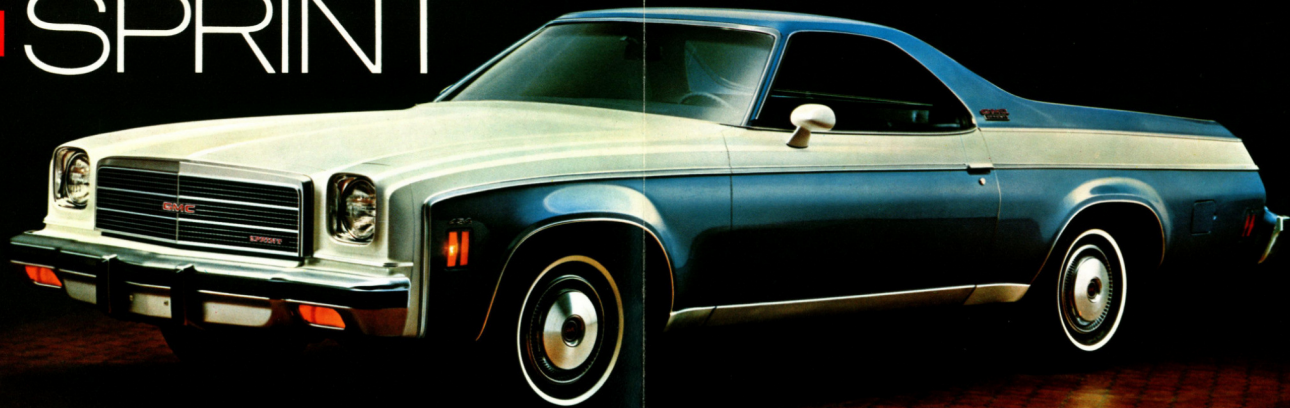


**GMC** SPRINT



**GMC**

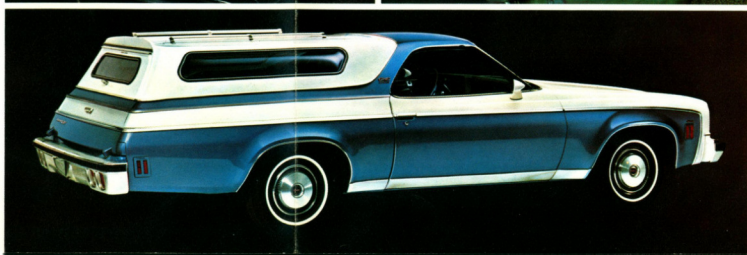
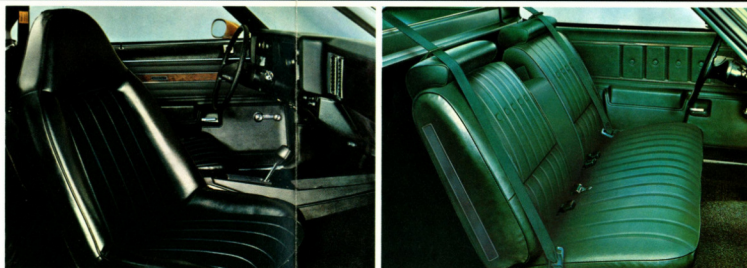
# SPRINT



Shown above—Sprint Sierra Madre del Sur.

## ...A VERY SPECIAL VALUE

All the things that an experienced driver looks for can be found in the Sprint including that hard to measure feeling of closeness with a responsive performer. And, as you like it, the Sprint can be an expression of your own individuality. For the look of a refined thoroughbred, there's the new Sprint Sierra Madre del Sur with special paint trim and body moldings. For the polished estate vehicle look, there's the Sprint High Sierra with wood grained vinyl side panels and for excitement there's the rally-striped Sprint SP teamed with available 454 CID V8, close ratio four-speed manual transmission and radial tuned suspension. All can be had with the same truck toughness that appeals to anyone's practical nature. To test the Sprint against your own standards and to appreciate its clean, uncluttered interior and the pleasant surprises that you'll find in the Sprint's driveability, see your local GMC Truck dealer. One of the Truck People from General Motors.



## SPRINT INTERIORS AND EXTERIORS

A foam padded bench seat is standard in Sprint and Sprint Classic models with seat belts at all passenger positions and shoulder belts for the driver and right-hand passenger. The available 90° swivel seat (shown at left) may be ordered with or without center storage console. The Sprint Classic model offers lower body sill moldings, vinyl coated headliner; instrument panel crown pad, flat color keyed finish on instrument panel and foam padded bench seat with fold down center armrest. Sprint SP includes all of the above plus distinctive SP identification and rally stripes, bright grille and body color sport mirrors, white raised letter tires and turbine wheel covers. The Sprint High Sierra provides a distinctive wood grain vinyl accent treatment with bright body side moldings as well as tailgate and wheel opening moldings. Also included in all models, although neatly out of sight, a small compartment behind the driver's seat to stow tools and personal items.

Sprint High Sierra models offer full body side and tailgate accents with wood grained vinyl trim plus special body side, tailgate, drip rail and wheel opening moldings. Vinyl roof available separately in one of seven colors, black, blue, brown, beige, green, red and white.

## SPRINT DRIVE TRAINS

Standard Sprint powered by the 2bbl., 350 CID, V8 engine. 400 or 454 CID, 4bbl., V8 engines are available.

The chart below lists the engine and transmission combinations available. Ask your GMC Dealer to assist you in making the right selection for your driving requirements.

## ENGINE/TRANSMISSION SELECTOR GUIDE

ENGINE	AVAILABLE TRANSMISSION	REAR AXLE RATIO (TO 1.0)	
		STD.	AVAIL.
350 CID, V8	3-SPEED MANUAL, STD. AUTOMATIC	3.08 2.73	3.42*
400 CID, V8	AUTOMATIC	2.73	3.42
454 CID, V8	AUTOMATIC 4-SPEED MANUAL	2.73 3.42	3.42

\*Trailer Towing Ratio

All 1974 GMC gasoline engines are equipped with advanced exhaust emission control systems, and are designed to operate efficiently on unleaded or low lead fuels of at least 90 Research Octane. In addition to the lower exhaust emissions attainable, there are benefits in longer life to your spark-plugs, exhaust system and other engine components. If these unleaded low lead gasoline are not available, use leaded 90 Research Octane or higher regular grade fuel containing 0.5 grams or less of lead should be used.

## STANDARD SPECIFICATIONS

350 CID, V8 with column mounted three-speed manual transmission with 10-inch diameter clutch; front suspension capacity @ 2,400-pounds; rear suspension capacity @ 2,825-pounds; springs, coil at all four wheels; brakes, hydraulic self-adjusting; fuel tank capacity @ 26-gallons; standard tires, G78-14B (4pr).



Available Comfortilt Steering Wheel adjusts to six different positions for your added comfort.



Available console adds a sporting look to your Sprint interior. Provides a handy storage place for maps and driving accessories.



Available AM, AM/FM or AM/FM eight track stereo can add to your driving enjoyment. Antenna mounted in the windshield.



Power door locks and power windows available separately offer extra convenience.

Vehicles shown illustrate standard or available factory-installed equipment unless noted as dealer-installed accessories. Items referred to as options or available are at extra cost. Different model applications of the components that are listed in accompanying tables as well as many other items of factory-installed equipment may be ordered through your GMC dealer.

GMC Truck & Coach Division reserves the right to make changes at any time without notice in prices, colors, materials, equipment, specifications and models and also to discontinue models. Data shown is basic information for the prospective buyer effective at time of issuance of this pamphlet. Dealer will provide complete up-to-date information in available equipment, specifications, etc. not shown here.



## TRUCK & COACH DIVISION

GENERAL MOTORS CORPORATION

Pontiac, Michigan 48053



Sprint High Sierra with available vinyl roof.



Independent front suspension system helps to smooth out road shocks for easy handling and a comfortable ride. Single piston, floating caliper front disc brakes resist fade and recover quickly from the effects of water immersion.

Durable double-walled construction throughout including tailgate keeps the dents from shifting loads inside and out of sight. Inner fender liners help resist rust to help keep Sprint sheet metal looking good longer.



Turbine wheels included with available Sprint SP equipment are urethane. Look like aluminum.



Dual sport mirrors included with available Sprint SP package. Remote control on driver's side.



Available air conditioning helps keep you cool behind the wheel; lets you arrive unfrustrated in the hottest weather.

## OTHER AVAILABLE EQUIPMENT

Includes auxiliary lighting, power steering, electric clock, tachometer and gauges, bumper guard and color keyed floor mats.

### SUDDEN SERVICE SYSTEM

Need answers to truck service and maintenance questions... answers to parts requirements questions... answers to recommended truck specifications questions? Now GMC offers you direct to factory communications. You talk with truck experts at Pontiac, Michigan. Truck experts solve truck problems. That's why we're the truck people from General Motors. If you need us, dial toll free Monday through Friday, between 8:00 AM and 5:00 PM EST.

**GMC TRUCKER SERVICE SYSTEM—800-521-2800**  
In Michigan call 200-731-7953

\*Not applicable in Alaska, Hawaii, or foreign countries.\*