

ACCORD 1984



The Honda Accord Hatchbacks

Eight years ago we quietly introduced the Honda Accord Hatchback. The Accord set a new standard for quality and value. It came with a long list of standard features and conveniences. It was praised by automotive experts. Through the years we have continually refined and improved the Accord. For 1984, we did it again.

The Honda Accords now have a new 12-valve engine that delivers more power with excellent fuel economy.* New refinements to the fully independent suspension make them even more road-worthy. Even more sporty.

The 1984 Honda Accord Hatchbacks.

The success story continues.



Accord LX Hatchback

Accord Hatchback

The Honda Accord 4-Door Sedans

It has become the standard by which other sedans are judged. It has been copied and it remains coveted. The automotive experts at *Car and Driver* magazine, May 1982, stated, "The Honda Accord is far and away the best compact in all the land."

Subtle aerodynamic and suspension refinements complement the Accord Sedan's new, more efficient engine. New colors and interior fabrics enhance the Accord's styling.

For 1984, Honda introduces a new Accord.

The Accord LX 4-Door Sedan. With new luxuries throughout its sumptuous interior.

The 1984 Honda Accord 4-Door Sedans.

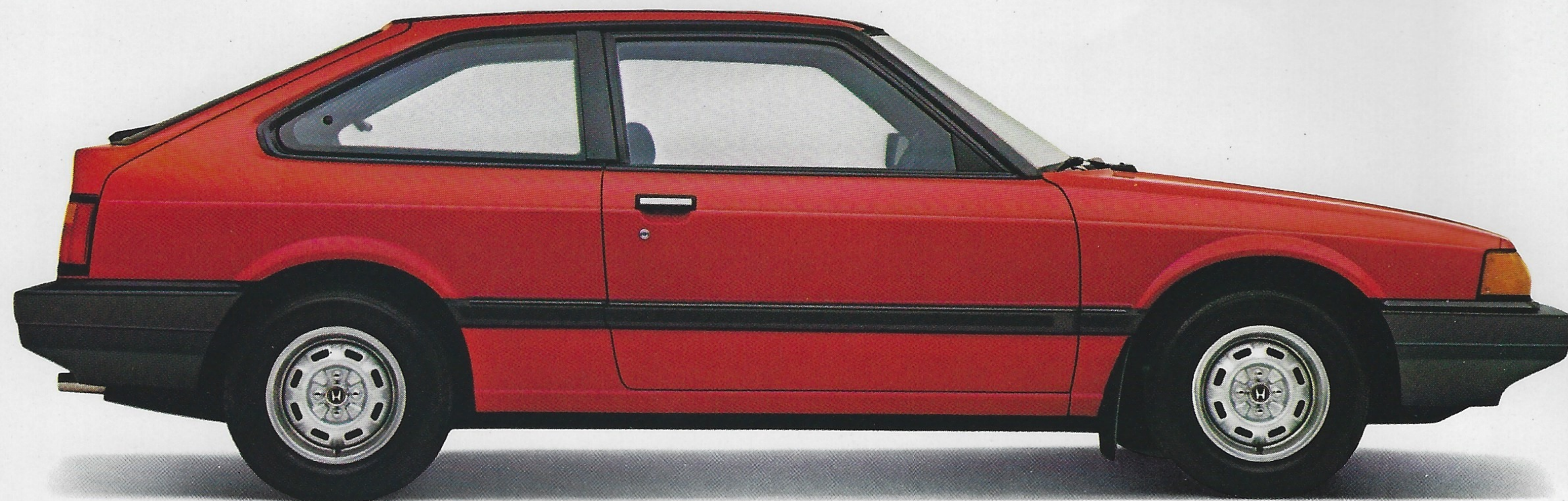
Now the standard is higher.

*See EPA estimates,
back cover.



Accord LX 4-Door Sedan

Accord 4-Door Sedan

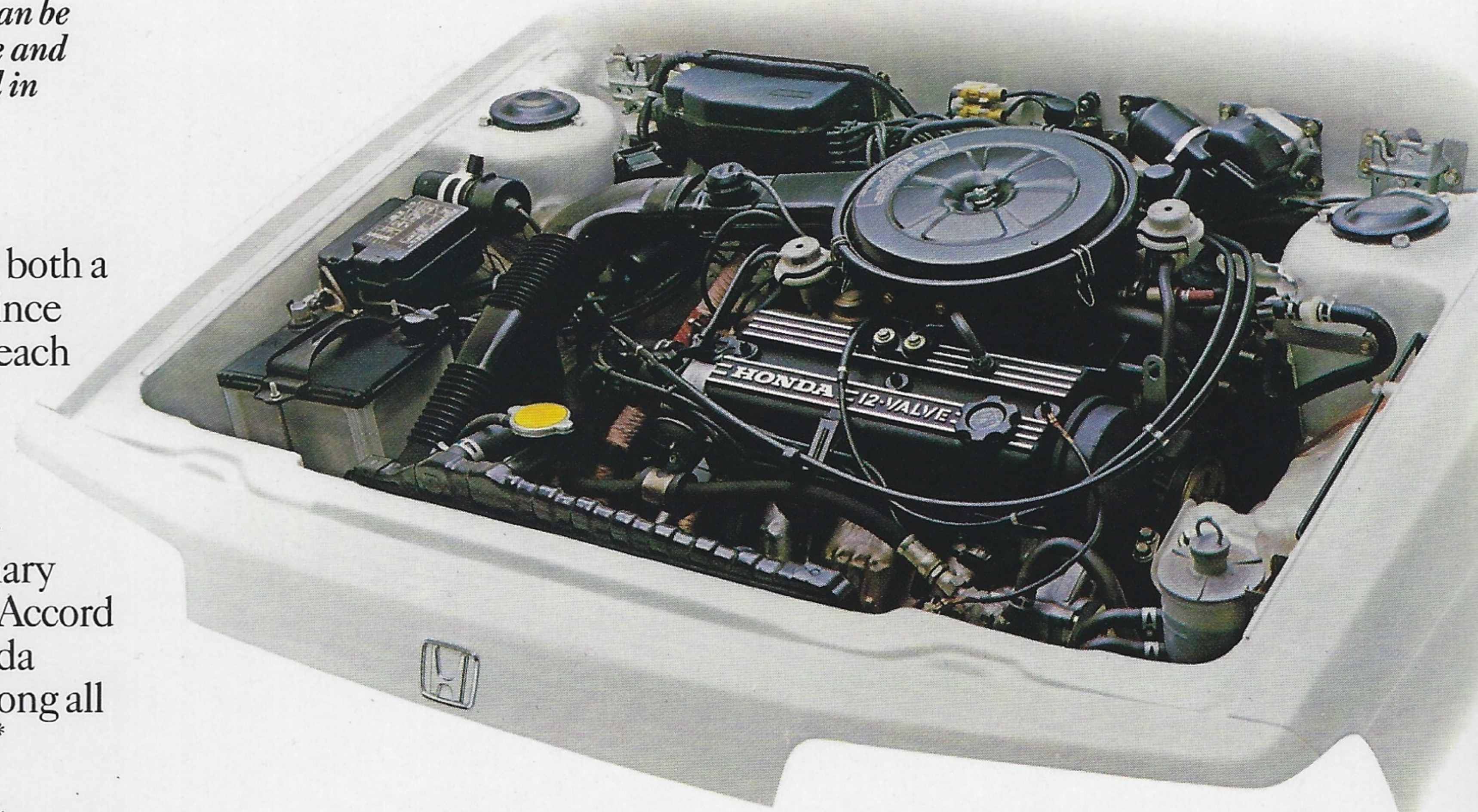


Accord aerodynamic refinement can be seen in the lower, rounder hoodline and more pronounced rear spoiler. And in excellent gas mileage.*

The Honda Accord has been both a critical and popular success since its introduction in 1976. And each year Honda continues to refine and improve it.

These improvements have always been of an evolutionary, rather than revolutionary nature. And have earned the Accord a high resale value. And Honda the highest owner loyalty among all leading import automobiles.**

Engines: For 1984, the Honda Accords receive an all-new engine. It has less than a 5 percent increase in displacement over the engine it replaces. Yet it produces significantly more power, and still retains Honda's



traditionally high fuel economy.

The engine is Honda's 12-valve, Advanced Stratified Charge engine. It uses dual intake valves to promote turbulence and swirl in the combustion chamber for more complete burning of the fuel mixture.

The intake valves open at slightly different times. The intake valve directly opposite the exhaust valve opens before the intake valve farthest away. This increases turbulence within the combustion chamber and provides the benefit of valve overlap, desirable for high-speed power output. Honda's valve arrangement and staggered timing also promotes good operation at lower engine speeds, for smoother power and no sacrifice in fuel economy.

The cylinder head is made of a titanium-aluminum alloy. It is a cross-flow design, which means fuel and air enter from one side and exhaust to the other side for more efficient operation.

In combination with Honda's front-wheel-drive system and smooth 5-speed manual or available 4-speed automatic transmission with torque converter lock-up, the new engine makes the Accords that much more responsive and rewarding to drive.

Suspension: The Accords utilize fully-independent MacPherson strut suspension systems. Independent suspension allows each wheel to react to road conditions without affecting the other wheels. Honda's

suspension engineering gives a very comfortable ride.

All Accords feature a front stabilizer bar for sure handling and steering response. The Accord Hatchback and LX Hatchback also have rear stabilizer bars, to complement their more sporting character.

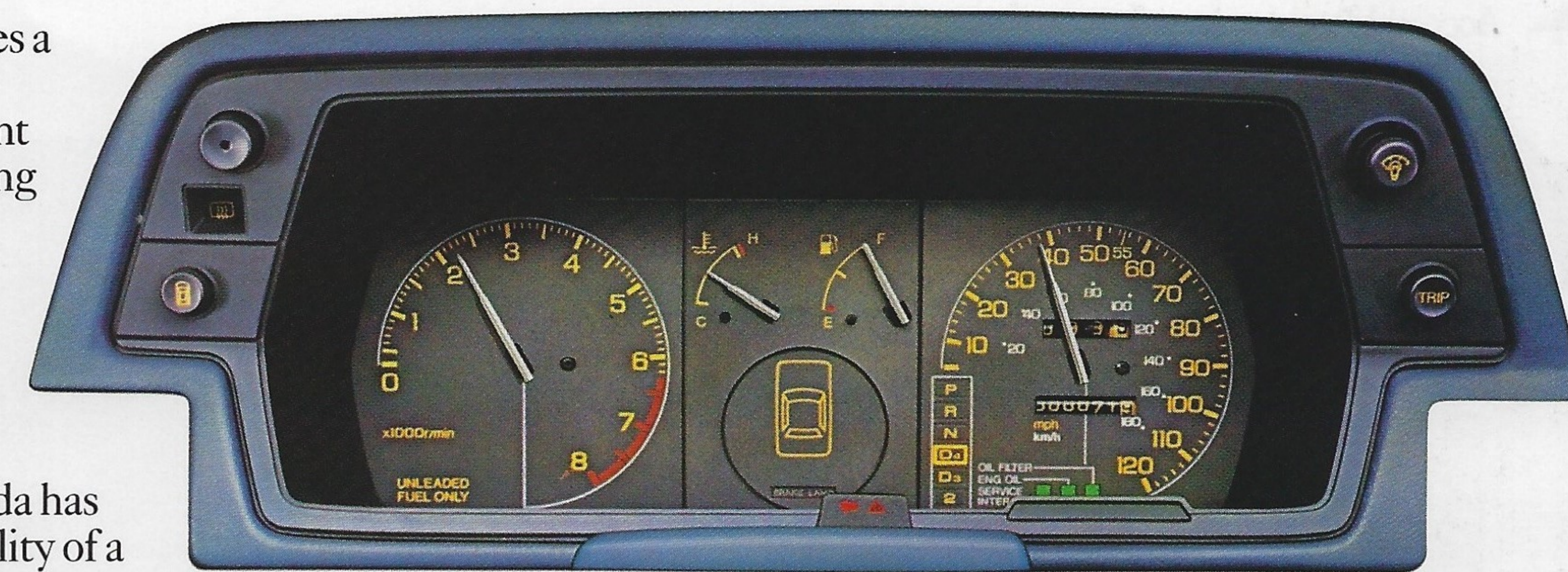
In the new Accord, Honda has combined the solid ride quality of a larger car with the handling and maneuverability of a sporty car. This has inspired *Car and Driver* magazine (January 1982) to write, "... it is to Honda's everlasting credit that the resulting cars are such all-around sweethearts to drive."

Ergonomics: Ergonomics, the relation of man to machine, is very important at Honda. A car that is ergonomically correct is more enjoyable to drive. So Honda takes great care to ensure that all instruments, switches and controls are easily accessible and quickly understood. In the hatchback models, instrumentation is in high-visibility orange.

In the Accord Sedans (and the LX Hatchback) cruise control is standard. Set and Resume buttons are located on the steering wheel hub for easier operation.

In all Accords, a convenient stalk controls operation of the dual halogen headlights, and includes a flash-to-pass feature. Another stalk controls windshield wipers which have two speeds plus an intermittent setting. In addition, there is a mist setting which provides a single wipe only when you need it.

Proper ergonomics also includes



Accord instrumentation is complete and comprehensible. Automatic transmission models have a lighted quadrant within the main instrument cluster. So you know what gear you are in without taking your eyes off the road.

proper seating. Newly-contoured reclining front bucket seats offer even more lumbar, lateral and thigh support. Even more comfort. Hatchback models even have a passenger seat release lever which the driver can use to assist passengers in and out of the rear seat.

Hatchback models also feature a split folding rear seatback for increased versatility when carrying

passengers and cargo. The Accord Sedans feature built-in rear seat headrests for the comfort of those riding in back.

Honda's attention to detail can be seen throughout the Accord line. One example is the one-piece, moulded headliner. Notice how it indents above the driver and front passenger, optimizing headroom. Notice how the sun visors recess into the headliner for space efficiency and a neat appearance.

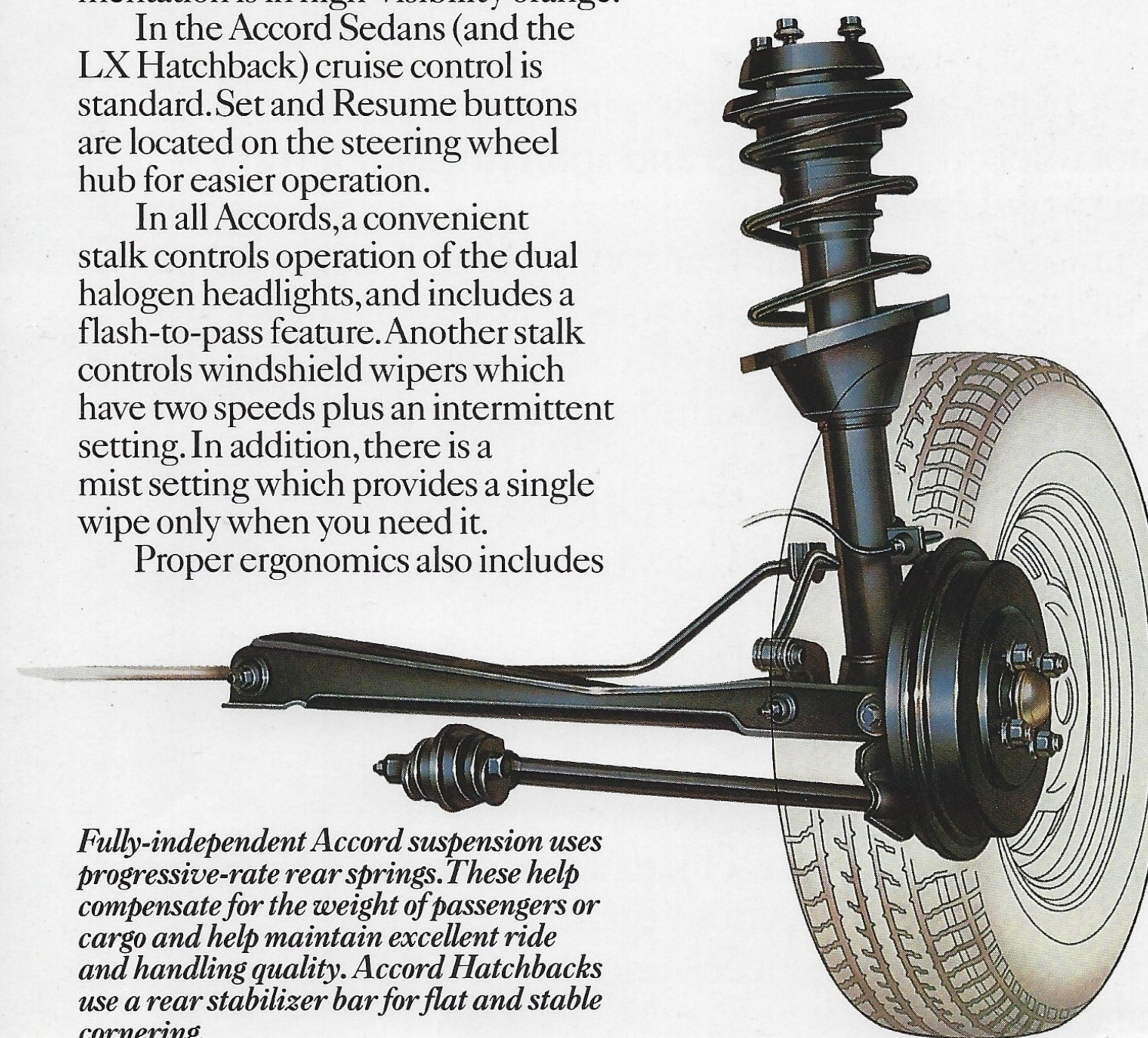
All Accords are equipped with comfortable inertia-reel seat belts. They allow freedom of movement and only lock when they are needed. Honda urges you to wear a seat belt whenever you drive or ride in a car. After all, seat belts are a simple fact of life.

Summary: The 1984 Honda Accords continue to evolve toward perfection. The technological sophistication of their new engines and power trains and the advanced engineering of their suspensions and interior environments are state-of-the-art. And so is their quality.

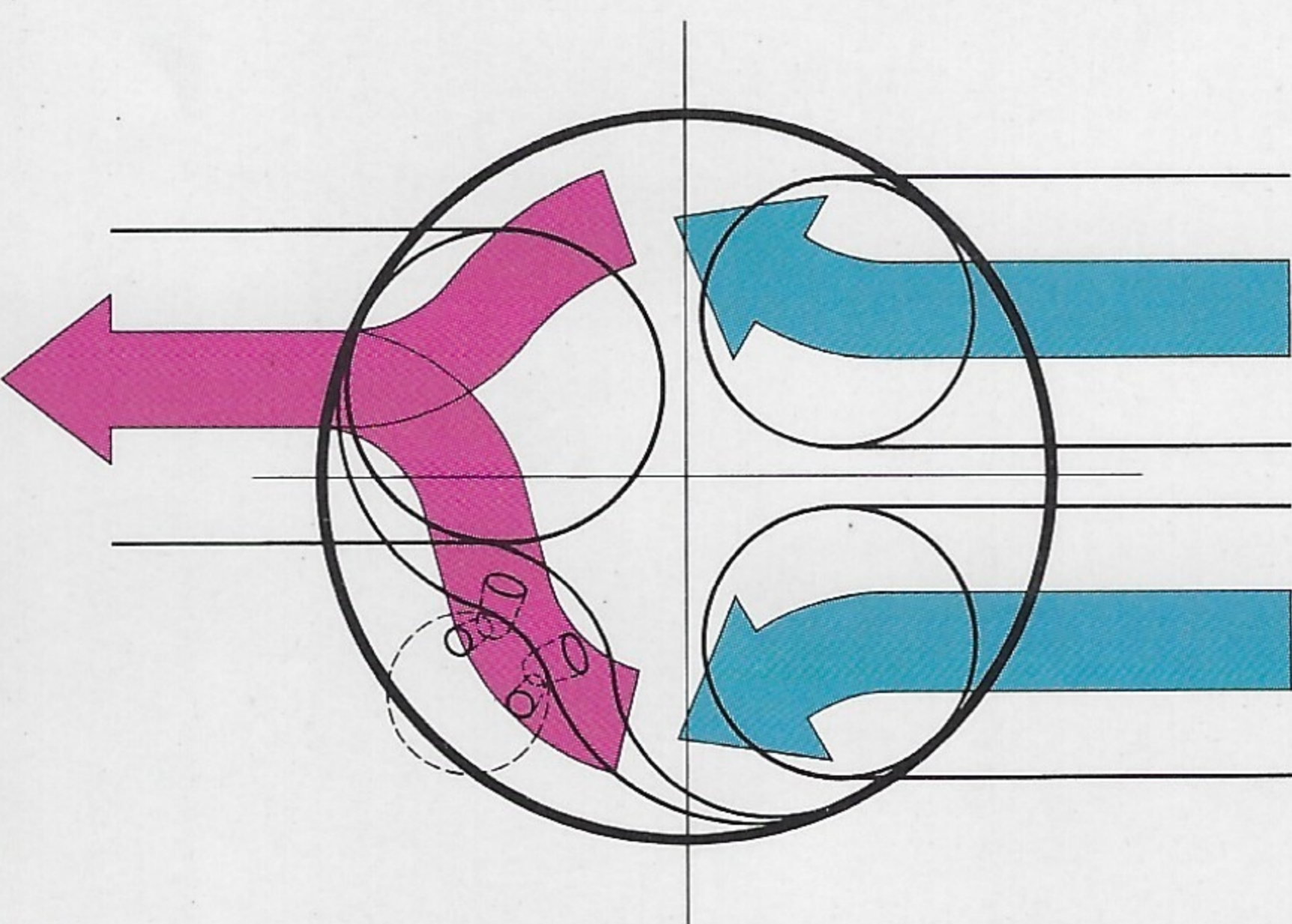
Precise fit of body and trim pieces and smooth, high-gloss paint finishes are Accord hallmarks. When you examine the Honda Accords, we think you will agree with *Car and Driver* (January 1982) when they stated, "They are beautifully put together, very comfortable and rewarding to spend time with. ... (the Accords) simply look and feel like premium work."

* See EPA estimates, back cover.

** Owner loyalty statement is based on figures derived from R.L. Polk and Co., 1982 model year *New Car Buyer Analysis*.



Fully-independent Accord suspension uses progressive-rate rear springs. These help compensate for the weight of passengers or cargo and help maintain excellent ride and handling quality. Accord Hatchbacks use a rear stabilizer bar for flat and stable cornering.



Honda's cross-flow cylinder head uses dual intake valves to promote turbulence of the fuel/air mixture. This improves combustion for greater fuel economy and power.

Accord Hatchback



The Accord Hatchback and the LX Hatchback reflect new aerodynamic refinements in their lower hoodlines, more pronounced rear spoilers and sporty blackout trim. And more performance from their new 12-valve engines.

Front and rear stabilizer bars and progressive rate rear springs improve handling and still deliver the comfortable ride Accords are famous for. The LX takes it one step further with Michelin steel-belted radial tires and cruise control.

Both the Accord Hatchbacks come with a smooth-shifting 5-speed manual transmission. A 4-speed automatic with torque converter lock-up is also available. The Accord Hatchback with automatic transmission includes Honda's variable-assist power steering. The Accord LX has power steering as standard equipment with either transmission.

Both Accord Hatchbacks feature tinted glass, a rear window wiper/washer and a remote-control outside mirror. The LX has dual outside mirrors. Both have dual halogen headlights and wide, protective body side mouldings.

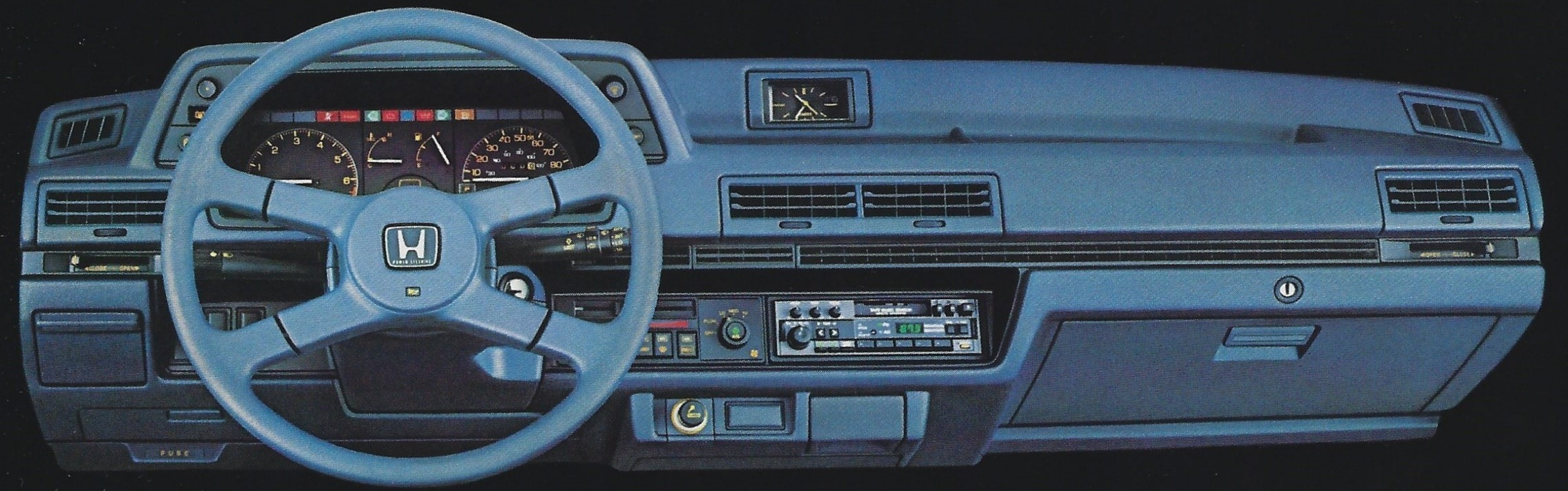
A remote hatch release opens to a generous, carpeted cargo area. New split folding rear seatbacks add carrying versatility. The LX Hatchback also has a cargo cover to hide your valuables. It is hinged to provide access from the rear seat.

Coming or going, the 1984 Honda Accord Hatchback and the Accord LX Hatchback simply look valuable. And they are.



Accord LX Hatchback

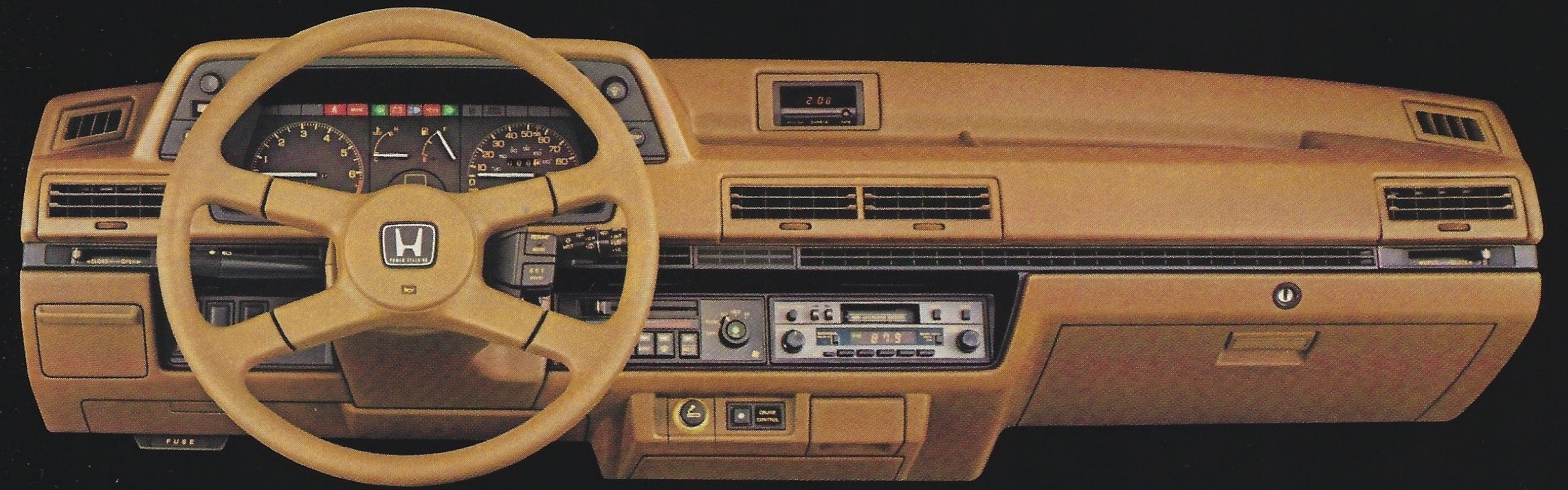
The Accord Hatchback features newly-contoured reclining front bucket seats. A new, sport steering wheel frames high-visibility orange instrumentation that includes tachometer, trip odometer, maintenance reminder, low-fuel warning light and oil pressure/level warning light. A quartz sweep hand clock and an electronic warning system are also included. It tells you if a door or the hatch is ajar, or if a brake light is burned out. Honda's available 4-speed automatic transmission is shown. It comes with variable-assist power steering. Air conditioning and an AM/FM stereo with electronic tuning and autoreverse cassette with Dolby® and tape music sensor are available.



Accord Hatchback



The Accord LX Hatchback features plush and comfortable interior trim with thick carpeting throughout. Even on the lower door panels. In addition, there are map pockets and courtesy lights in each door. Cruise control, with Set and Resume buttons on the steering wheel hub, is standard equipment. So is variable-assist power steering and a quartz digital clock with date feature. Heating and ventilation are operated through soft-touch push-button controls. The Accord LX Hatchback comes equipped with an AM/FM stereo with digital display, push-button tuning and an autoreverse cassette deck with Dolby®. Air conditioning is the only option shown here.



Accord LX Hatchback



Tasteful and elegant styling distinguish the Accord 4-Door Sedan wherever it's driven. The new hoodline is lower, for enhanced aerodynamic efficiency. The rear deck includes a small spoiler to help manage airflow as it passes over and behind the Accord. Wide, protective body side mouldings are handsomely integrated into the overall design.

Standard features like fully-independent MacPherson strut suspension, cruise control, variable-assist power steering, power-assisted, self-adjusting brakes, tinted glass and steel-belted radial tires make every trip an experience in relaxed comfort.

A generous trunk, lined and carpeted, with side stowage compartments and a trunk light, lets you take along all you need. The remote trunk release can be locked with a separate key for security. Child-proof rear door locks help keep loved ones secure. Rear seat heater ducts and built-in rear headrests help keep them comfortable.

The new Honda Accord LX 4-Door Sedan takes comfort and luxury one step further. With a more elegantly appointed interior. Thicker carpeting throughout, including the trunk. Michelin steel-belted radial tires. And even more standard conveniences.

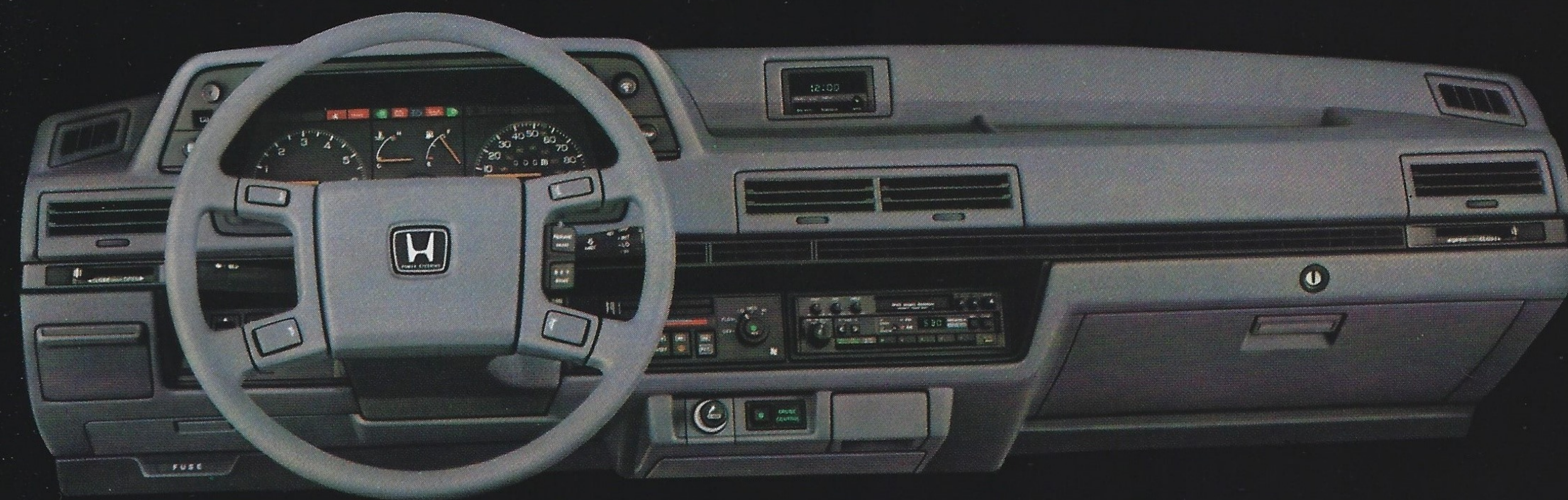
Accord 4-Door Sedan



Accord LX 4-Door Sedan

Luxury abounds in the Accord LX 4-Door Sedan. Consider sumptuous seating fabric and lush cut-pile carpeting. Power windows and power door locks. Courtesy light in each door. Map pockets in each front door. And magazine pockets behind the front seats. There's even an illuminated vanity mirror on the right visor.

Air conditioning is standard equipment in the LX 4-Door Sedan. So is an AM/FM stereo with digital electronic tuning, an autoreverse cassette with Dolby® and tape music sensor. Four speakers and a power antenna are also standard. The Accord LX is shown here with Honda's available 4-speed automatic transmission.



Accord LX 4-Door Sedan




Specifications	ACCORD HATCHBACK	ACCORD LX HATCHBACK	ACCORD 4-DOOR SEDAN	ACCORD LX 4-DOOR SEDAN
ENGINE Front-Wheel Drive— Transverse Engine 12-Valve Cross-Flow Head 1829cc Displacement Horsepower: 86 @ 5800 rpm Torque (lb.-ft.): 98.6 @ 3500 rpm	•	•	•	•
TRANSMISSION 5-Speed Manual Optional Automatic—4-Speed w/ Torque Converter Lock-Up	•	•	•	•
SUSPENSION Front: Independent MacPherson Strut w/ Stabilizer Bar Rear: Independent MacPherson Strut w/ Progressive-Rate Springs Rear Stabilizer Bar	•	•	•	•
STEERING Rack and Pinion Steering Variable-Assist Power Steering	• w/Auto. Trans. Only	•	•	•
BRAKES Power-Assisted, Self-Adjusting Front Disc/Rear Drum Brakes Ventilated Front Discs	•	•	•	•
TIRES Steel-Belted Radial Tires Size: P185/70R13 Michelin Premium Tires	•	•	•	•
DIMENSIONS, WEIGHT, CAPACITIES Wheelbase (in.) Length (in.) Width (in.) Height (in.) Tread—Front (in.) Tread—Rear (in.) Turning Diameter (ft.)—(curb-to-curb) Fuel Tank Capacity—gal. (liters) Approx. Curb Weight (lbs.) —Manual Transmission	96.5 167.5 65.2 53.3 56.9 55.9 34.1 15.8 (60) 2187	96.5 167.5 65.2 53.3 56.9 55.9 34.1 15.8 (60) 2235	96.5 175.4 65.2 53.3 56.9 55.9 34.1 15.8 (60) 2271	96.5 175.4 65.2 54.1 56.9 55.9 34.1 15.8 (60) 2341
COLOR & TRIM Exterior/Interior †Metallic Paint	Greek White/ Blue Dominican Red/ Black & Gray Stratos Blue†/ Blue	Graphite Gray†/ Gray Regency Red†/ Red Copper Brown†/ Tan	Greek White/ Blue Graphite Gray†/ Gray Regency Red†/ Red Stratos Blue†/ Blue	Greek White/ Blue Graphite Gray†/ Light Gray Regency Red†/ Dark Red Stratos Blue†/ Dark Blue
*1984 EPA FUEL ECONOMY ESTIMATES 49-State Est. MPG/Est. Hwy. 5-Speed Automatic Transmission California Est. MPG/Est. Hwy. 5-Speed Automatic Transmission	<u>32</u> / 45 <u>29</u> / 41 <u>30</u> / 42 <u>28</u> / 39	<u>32</u> / 45 <u>29</u> / 41 <u>30</u> / 42 <u>28</u> / 39	<u>32</u> / 45 <u>29</u> / 41 <u>30</u> / 42 <u>28</u> / 39	<u>32</u> / 45 <u>29</u> / 41 <u>30</u> / 42 <u>28</u> / 39

*Use EPA Est. MPG for comparison. Your mileage may differ depending on speed, weather and trip length. Actual highway mileage will probably be lower.

Specifications—Continued	ACCORD HATCHBACK	ACCORD LX HATCHBACK	ACCORD 4-DOOR SEDAN	ACCORD LX 4-DOOR SEDAN
INTERIOR FEATURES Air Conditioning AM/FM Stereo w/Autoreverse Cassette w/Dolby® and 2 Speakers AM/FM Stereo w/Autoreverse Cassette w/Dolby® Tape Music Sensor and 4 Speakers Built-In Rear Headrests Split Folding Rear Seatback Rear Window Defroster Front Door Glass Defrosters Cargo Area Light Cargo Area Cover—Rigid Rear Seat Heater Ducts Driver's Door Map Pocket Courtesy Light—Each Door Passenger Assist Handles Passenger Seatback Release—Driver's Side Vanity Mirror—Right Visor Day/Night Rearview Mirror	O O O — S S S S O — S S S S S S	O S — S S S S S — S S S S S S	O O S S S — S S S S S S	S — S S S — S Illuminated S
EXTERIOR FEATURES Tinted Glass Locking Fuel-Filler Door Rear Window Wiper/Washer	S S S	S S S	S S —	S S —
INSTRUMENTS & CONTROLS Cruise Control Tachometer Trip Odometer Quartz Analog Clock Quartz Digital Clock w/Date Electronic Warning System Low-Fuel Warning Light Maintenance Reminder Power Windows Power Antenna Power Door Locks Remote Hatch/Trunk Release 2-Speed & Intermittent and Mist Wiper Control—Stalk-Mounted Remote-Control Outside Rearview Mirror	— S S S — S S S — — — S — S S	S S — S — S S S — — — S Dual	S S S S S S S S S S S S S S	S S S S S S S S S S S S S

S = Standard Equipment O = Optional Equipment

Accessories	Trunk Luggage Racks Ski Rack Bicycle Carrier Remote Control Right-Side Mirror Rear Window Louver Floor Mats—Carpet or Rubber Steering Wheel Cover Cargo Area Cover—Rigid	Aluminum Alloy Wheels Alloy Wheel Lock Set Fog Light Kit—Quartz Halogen Door Edge Guards Fender Well Trim Bumper Guards Rear Wheel Mud Guards Touch-Up Paint	Engine Block Heater Battery Blanket See your dealer for specific accessory availability by model. Ask for separate Accessories brochure.
Audio Entertainment Systems Stereo Speakers Manual Antenna Power Booster 7-Band Graphic Equalizer/Booster and Center Console Air Conditioning Utility Roof Rack with Bicycle and Ski Attachments			



See your dealer for introduction dates of specific models.

Accessories, materials, equipment, price, colors, models, specifications and availability are subject to change without notice. Colors may vary from those shown.



©1983 American Honda Motor Co., Inc.