



Nissan Intelligent Mobility moves you one step ahead. In cars that feel like an extension of you, helping you see more and sense more, reacting with you, and sometimes even for you. Nissan Intelligent Mobility is about a better future – moving through life with greater confidence, excitement and connection to the world around you.



ARMADA®

2021



¹Availability of features vary by vehicle model year, model, trim level, packaging, and options. Please see Owner's Manual for important feature information. ²Driving is serious business and requires your full attention. If you have to use the feature while driving, exercise extreme caution at all times so full attention may be given to vehicle operation. ³Feature availability is dependent on vehicle model, trim level, packaging and options. Compatible connected device may be required and feature availability may be dependent on device's capability. Refer to connected device's Owner's Manual for details. Late availability for some features. Driving is serious business and requires your full attention. Only use features and connected devices when safe and legal to do so. Some features, including automatic crash notification and SOS, are dependent upon the telematics device being in operative condition, its ability to connect to a wireless network, compatible wireless network availability, navigation map data and GPS satellite signal receptions, the absence of which can limit or prevent the ability to reach Customer Care or receive support. GPS mapping may not be detailed in all areas or reflect current road status. Never program GPS while driving. Only use Remote Engine Start and Remote Horn features in accordance with any laws, rules or ordinances in effect in your vehicle's location. Some services and features are provided by independent companies not within Nissan's control. **Should service provider terminate or restrict service or features, service or features may be suspended or terminated without notice or with no liability to Nissan or its partners or agents.** Services and features may require compatible cellular network provided by independent companies not within Nissan or its partners' or agents' control. Cellular network signal strength may vary and may not be available in all areas or at all times. Services and features may not function if cellular network is unavailable, restricted, or terminated. Nissan and its partners or agents are not responsible for associated costs or other third party changes that may be required for continued operation due to cellular network unavailability, restriction, or termination (including equipment replacements/upgrades, if available, or roaming charges on alternative networks). Technology is evolving, and changes by independent companies are not within Nissan's or its partners' or agents' control. Enrollment, owner consent, personal identification number (PIN), and subscription agreement may be required to receive full suite of features and services. Trial periods (if applicable) begin on the date of vehicle purchase or lease of a new Nissan. Trial periods may be subject to change at any time and may be subject to early termination without notice. Required subscriptions may be sold separately for each available feature or service after trial period ends, and may continue until you call service provider to cancel. Installation costs, one-time activation fee, other fees and taxes may apply. Fees and programming subject to change. Feature may be subject to age restrictions in some areas. Subscriptions governed by service provider's subscription agreement, terms and conditions and privacy statements available at service provider's website. Text rates or data usage may apply. The Nissan names, logos and slogans are trademarks owned by or licenced to Nissan Motor Co. Ltd. or its North American subsidiaries. Other trademarks and trade names are those of their respective owners. **For important safety information, system limitations, and additional operating and feature information, see Dealer or Owner's Manual.** ⁴Driving is serious business and requires your full attention. If you have to use the connected device while driving, exercise extreme caution at all times so full attention may be given to vehicle operation. Smartphone or other external device not included. ⁵Leather appointments. ⁶Nissan advanced safety technologies can't prevent all collisions or warn in all situations. See Owner's Manual for important safety information. ⁷Intelligent Emergency Braking with Pedestrian Detection cannot prevent all collisions and may not provide warning or braking in all conditions. Driver should monitor traffic conditions and brake as needed to prevent collisions. See Owner's Manual for safety information. ⁸Rear Automatic Braking cannot prevent all collisions and may not provide warning or braking in all conditions. Driver should monitor traffic conditions and brake as needed to prevent collisions. See Owner's Manual for safety information. ⁹Rear Cross Traffic Alert may not detect all vehicles. See Owner's Manual for safety information. ¹⁰Blind Spot Warning and Intelligent Blind Spot Intervention cannot prevent all collisions and may not detect every object or warn in all situations. Driver should always turn and look before changing lanes. See Owner's Manual for safety information. ¹¹Intelligent Lane Departure Warning and Intelligent Lane Intervention only operates when lane markings are able to be detected. See Owner's Manual for safety information. ¹²Intelligent Cruise Control uses limited braking and is not a collision avoidance or warning system. Driver should monitor traffic conditions and brake as needed to prevent collisions. See Owner's Manual for safety information. ¹³Intelligent Driver Alertness cannot provide a warning in every situation. See Owner's Manual for safety information. ¹⁴Intelligent Forward Collision Warning cannot prevent collisions. See Owner's Manual for safety information. ¹⁵Intelligent Around View® Monitor cannot eliminate blind spots and may not detect every object. Driver should always turn and check surroundings before driving. See Owner's Manual for safety information. ¹⁶Towing capability varies by configuration. See Nissan Towing Guide and Owner's Manual for additional information. ¹⁷Intelligent Rear View Mirror may not detect every object and does not eliminate blind spots or warn of moving objects. See Owner's Manual for safety information. ¹⁸Intelligent Back-Up Intervention may not detect every object. Driver should always turn and check surroundings before driving. See Owner's Manual for safety information. ¹⁹Traffic Sign Recognition (TSR) may not detect and read all traffic signs in all conditions. Driver should monitor all traffic signs and obey all traffic laws. ²⁰Use the text messaging feature after stopping your vehicle in a safe location. If you have to use the feature while driving, exercise extreme caution at all times so full attention may be given to vehicle operation. Compatible smartphone required. Text rates and/or data usage may apply. ²¹Never program while driving. GPS mapping may not be detailed in all areas or reflect current road status. ²²Provincial laws may apply. Review before using. ²³Intelligent 4x4 cannot prevent collisions or provide enhanced traction in all conditions. Always monitor traffic and weather conditions. ²⁴Available feature. ²⁵Do not ride in a moving vehicle when the seatback is reclined. For the most effective protection, the seat should be upright. See Owner's Manual for safety information. ²⁶Requires compatible auxiliary media system. See Owner's Manual for details. ²⁷Horsepower and torque figures based on premium fuel only. ²⁸Cargo shown for display purposes only. Cargo and load capacity limited by weight and distribution. Always secure cargo. Heavy loading of the vehicle with cargo, especially on the roof, will affect the handling and stability of the vehicle. ²⁹Extra cost option. ³⁰Genuine Nissan Accessory Roof Rail Crossbars have a maximum weight limit of 100 lbs. ³¹Whichever occurs first. ³²Brake Assist cannot prevent all collisions and may not provide warning or braking in all conditions. Driver should monitor traffic conditions and brake as needed to prevent collisions. See Owner's Manual for safety information. ³³Sonar System may not detect every object. Driver should always check surroundings before driving. See Owner's Manual for safety information. ³⁴120-volt power outlet is intended only for use with compatible items. Please check specifications of wattage and amperage of items to be plugged in to determine compatibility. ³⁵Information displayed is dependent on how vehicle is equipped. ³⁶XM® and SiriusXM® Satellite Radio is available in the 10 Canadian provinces and the 48 contiguous United States. Subscription sold separately after trial period. All subscriptions subject to customer agreement at siriusxm.ca/terms. All fees and programming subject to change. ©2021 Sirius XM Canada Inc. The Sirius®, XM®, and SiriusXM® names and all related marks and logos are trademarks of Sirius XM Radio Inc. All other trademarks are the property of their respective owners. ³⁷Availability of specific features is dependent upon the phone's Bluetooth® support. Please refer to your phone Owner's Manual for details. Bluetooth® word mark and logos are owned by Bluetooth SIG, Inc., and any use of such marks by Nissan is under licence. ³⁸Airbags are only a supplemental restraint system. Always wear your seat belt. Rear-facing child restraints should not be placed in the front-passenger's seat. All children 12 and under should ride in the rear seat properly secured in child restraints, booster seats, or seat belts according to their size. Airbags will only inflate in certain accidents. See Owner's Manual for safety information. ³⁹Vehicle Dynamic Control cannot prevent collisions due to abrupt steering, carelessness, or dangerous driving techniques. It should remain on when driving, except when freeing the vehicle from mud or snow. See Owner's Manual for safety information. ⁴⁰Does not detect people or cargo. Always check rear seat before exiting. See Owner's Manual for safety information. ⁴¹Tire Pressure Monitoring System is not a substitute for regular tire pressure checks. See Owner's Manual for safety information. ⁴²Vehicle must be on for the Easy-Fill Tire Alert to operate. ⁴³2021 Fuel Consumption Estimate. Actual mileage may vary with driving conditions – use for comparison only. Google, Android™, Android Auto™, YouTube® and other related marks are trademarks of Google LLC. Apple CarPlay®, Apple Music®, Siri® and Siri® Eyes Free are registered trademarks of Apple, Inc. AudioPilot™ is a trademark of The Bose Corporation. Bluetooth® is a registered trademark of Bluetooth SIG, Inc. Bose® is a registered trademark of The Bose Corporation. Facebook® is a registered trademark of Facebook, Inc. HomeLink® is a registered trademark of Gentex Corporation. Instagram® is a registered trademark of Instagram, LLC. The Sirius®, XM®, and SiriusXM® names and all related marks and logos are trademarks of Sirius XM Radio Inc. All other trademarks are the property of their respective owners. Twitter® is a registered trademark of Twitter, Inc. All illustrations, photographs and specifications in this brochure are based on the latest product information. See actual vehicle for complete accuracy. Nissan Canada Inc. reserves the right to make changes at any time, without notice, in prices, colours, materials, equipment, specifications and models, and to discontinue models or equipment. For information on additional options and accessories, contact your Nissan Dealership. Registered trademarks are property of their respective owners. At nissan.ca, you'll find a way to "build your own Nissan," a dealer locator, and more information about key Nissan support services. The Nissan names, logos, product names, feature names, and slogans are trademarks owned by or licenced to Nissan Motor Co. Ltd. and/or its North American subsidiaries. **Always wear your seat belt, and please drive responsibly.** Catalogue number: 99999-ARM21EN. ©2021 Nissan Canada Inc. All rights reserved.



Best Driver Appeal among Large
SUVs in the U.S.

-J.D. Power, 2020

For J.D. Power 2020 award information, go
to [jdpower.com/awards](https://www.jdpower.com/awards) for more details.

Armada makes every day exciting

Premium looks and room for up to eight meets capability to expand what your next adventure could be. The chiseled exterior gives way to first-class interior luxury that will change what you come to expect from an SUV. And with 18 standard driver assistance features, you can feel confident whether cruising the highway or navigating a rock-laden trail.¹



Nissan Armada® Platinum shown in Coulis Red Pearl.

Even the grandest plans are well within reach

Armada® may be a full-size SUV, but even from the driver's seat, we designed the intuitive layout of the dash to give you easy access to all the controls. Add in a luxurious interior that puts as much emphasis on style as it does on comfort. Putting those big plans into action has never been more rewarding.

NissanConnect® 12.3" colour
touch-screen display²

Wireless Apple
CarPlay® integration³

Tri-zone Automatic
Temperature Control

Quilted leather-appointed
seats

Wireless Charger⁴



NissanConnect® 12.3" touch-screen display

Big enough to display the apps you want with sharper images. Smart enough to offer customization, one-line destination search, and more.² And to channel this new sense of control, Armada introduces a Display Commander, located in the centre console. Want over-the-air map and software updates? Standard. Wireless Apple CarPlay®³ Standard. Living large shouldn't be an option.

U.S. instrumentation shown.

Wireless Apple CarPlay® integration

People to see? Places to be? Just ask Siri®. Equipped with Siri® voice control, Apple CarPlay® brings your contacts, favourite messaging apps, Apple Music® playlists, Apple Maps, and more on board to your Armada. No need to plug-in. Your world is now freed from wires.^{3,4,20}



Android Auto™

With Android Auto, you can keep your eyes on the road and hands on the wheel while using your voice to help you with your day. Ask Google to play your favourite song, navigate home, or respond to a text hands-free. Just say, "Hey Google" or long-press the voice control button on your steering wheel.^{3,20,21}



Standard Safety Shield® 360 and driver assist technologies

In one of the most advanced Nissan vehicles ever, you can expect confidence from an array of safety and driver assist features.⁶

Safety Shield 360 includes:

- Intelligent Emergency Braking with Pedestrian Detection⁷
- Rear Automatic Braking⁸
- Rear Cross Traffic Alert⁹
- Blind Spot Warning¹⁰
- Intelligent Lane Departure Warning¹¹
- High Beam Assist

Armada also comes standard with:

- Intelligent Cruise Control¹²
- Intelligent Driver Alertness¹³
- Intelligent Blind Spot Intervention¹⁰
- Intelligent Lane Intervention¹¹
- Intelligent Forward Collision Warning¹⁴
- Intelligent Around View® Monitor¹⁵
- Trailer Brake Control¹⁶

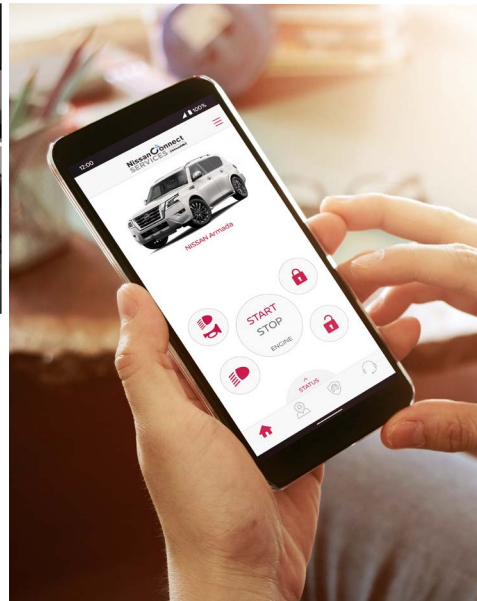
Armada Platinum also includes:

- Intelligent Rear View Mirror¹⁷
- Intelligent Back-up Intervention¹⁸
- Traffic Sign Recognition¹⁹



Wireless charger

Keep it 100%. Armada's wireless charging lets you charge your compatible gadgets without the need for cords.⁴



NissanConnect®

Remote start from your phone

With NissanConnect® Services, you can remotely start your vehicle from nearly anywhere your compatible smartphone works. Need to unlock your vehicle for a friend? Just tap the unlock button on your phone. You can even find your parked vehicle's location. Now that's cool.^{3,22}

INTELLIGENT 4x4

Get a grip on your adventurous side, faster than the blink of an eye

Imagine a 4WD system so advanced, it responds instantly to changing road conditions and continuously adjusts the amount of power distributed to each axle to help maintain control. And when the pavement turns to dirt or snow, a 2-speed transfer case helps keep things moving. What does all this mean for you? Feeling empowered with a greater sense of command, no matter the road or the season.²³

ZIP Intelligent 4x4 delivers power to both front and rear wheels for improved grip from the get-go. SIP Once you're up to speed, the system sends all of the power to the rear, resulting in higher efficiency. GRIP In slick conditions and tight corners, the system transfers the optimal amount of power from front to rear.²³



5.6 L V8

400
HP²⁷

413
LB.-FT
TORQUE²⁷

8,500
LBS. (3,856 KG)
MAXIMUM TOWING¹⁶



Impressive comfort and capability

Now there's no excuse not to bring all the toys. With an 8,500-lb. (3,856 kg) towing capacity, Armada® has the capability to haul some serious fun.¹⁶ Featuring innovative Tow/Haul mode, and the brute strength of the direct-injection 5.6-litre Endurance® V8, Armada is ready to take your excursion to the next level.

Impressive comfort and capability

Let the whole crew stretch out in absolute comfort with seating for up to eight. Then change things up with a highly flexible interior. Add in an innovative climate control system that reaches every row, and every passenger can find their ideal zone.

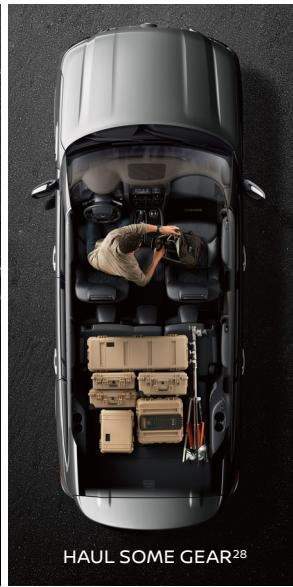
- Heated Front and 2nd-row Seats²⁴
- Standard Seating for Up to 8
- Dual Zone Automatic Temperature Control
- Rear air conditioning with rear controls
- Power recline & fold 3rd-row Seats²⁵
- Tri-Zone Entertainment System with Two Wireless Headphones²⁶



Nissan Armada® Platinum with Captain's Chairs Package shown in Quilted Almond Leather.⁵



TACKLE ERRANDS²⁸



HAUL SOME GEAR²⁸



TAKE THE WHOLE TEAM²⁸



MAXIMIZE CARGO SPACE²⁸

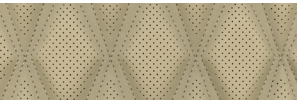
The quick answer to a sudden change in plans

With seating for up to eight adults with standard second-row bench seating and a highly flexible interior, Armada is ready for whatever the day brings. Need proof? Take a look at the possibilities.

CHOOSE YOUR COLOUR AND INTERIOR



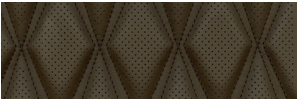
Charcoal Leather⁵
SL



Quilted Almond Leather⁵
Platinum



Quilted Black Leather⁵
Platinum



Quilted Espresso Brown Leather⁵
Platinum

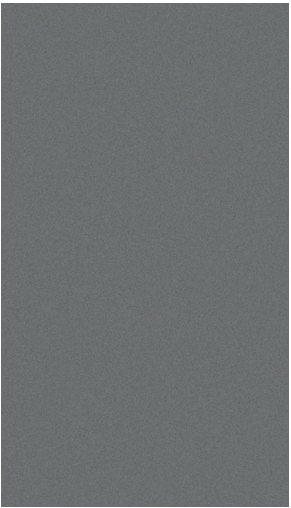
Nissan has taken care to ensure that the digital colour swatches presented here are the closest possible representation of actual vehicle colours. Swatches may vary slightly due to viewing light or screen quality. Please see the actual vehicle and colours at your dealer.

■ Standard

CHARCOAL LEATHER ⁵	SL	PLT
QUILTED ALMOND LEATHER ⁵		■
QUILTED BLACK LEATHER ⁵		■
QUILTED ESPRESSO BROWN LEATHER ⁵		■

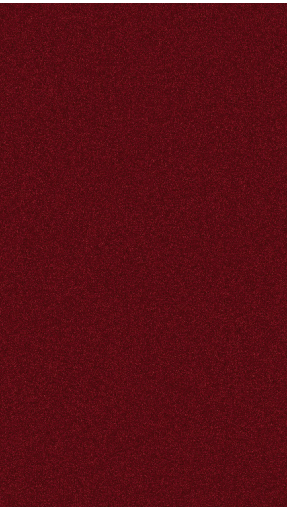


Aspen White²⁹ QAC



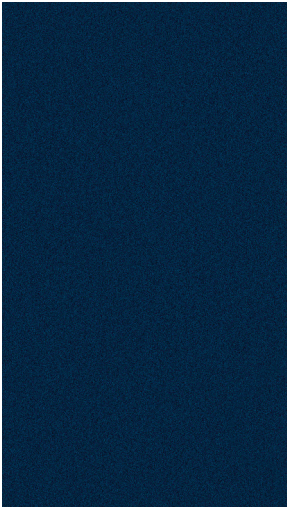
Gun Metallic²⁹ KAD

	SL	PLT
	■	
		■



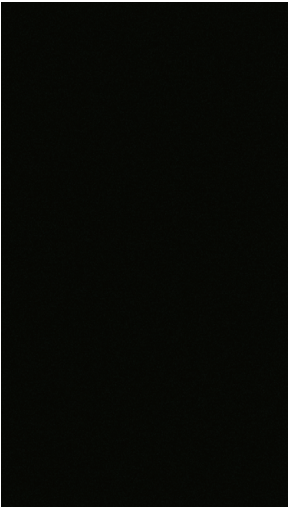
Coulis Red Pearl²⁹ NAW

	SL	PLT
	■	
	■	



Hermosa Blue²⁹ BW5

	SL	PLT
		■
		■



Super Black KH3

	SL	PLT
	■	
		■
		■

GENUINE NISSAN ACCESSORIES

Every Genuine Nissan Accessory is custom-fit, custom-designed and durability- tested. Each one is backed by Nissan's 3-year/60,000-km (whichever occurs first) limited warranty (if installed by dealer at the time of purchase), and can be financed when installed by dealer at time of purchase. Terms, conditions, and exclusions apply. See your Warranty Information Booklet for complete details.

A. **Roof Rail Crossbars**^{28,30}
Increase your utility options.

B. **All-season Cargo Area Protector**²⁸
Protect your cargo area from wear and tear.

C. **Rear Tailgate Illuminated Scuff Guard**
Guard against scratches when loading and unloading. LED lights illuminate when tailgate is opened.

D. **Rear Bumper Step Assist**
Makes it easier to get items on and off the roof rack.

Additional Accessories:

- All-Season Floor Mats
- Rear Cargo Organizer²⁸
- Carpeted Cargo Area Protector²⁸
- Weight Distributing Hitch Ball Mount, Class IV (Includes Class IV Hitch Ball)¹⁶
- Side-Window Deflectors
- Chrome Body Side Mouldings
- Chrome Side Mirror Covers
- And More



See your Nissan dealer for details, or go to accessories.nissan.ca

BUYING AND OWNING

Finance Options Through Nissan Canada Finance, we offer many attractive lease and loan options that can be tailored to your individual needs. We have unique programs such as the Nissan Grad Program, Loyalty Program or the Nissan Advantage Program. Please visit our website Nissan.ca/finance to explore all of the options available. We have also made it easy to pre-qualify online. All of our programs come with competitive rates and terms. With our flexible options, driving home a new Nissan has never been easier. Consult your local Nissan Dealership for complete details.

No-Nonsense Warranty Every 2021 Nissan is covered by a 3 year/60,000 km³¹ Comprehensive New Vehicle Warranty, a 5 year/100,000 km³¹ Powertrain Warranty, an 8 year/130,000 km³¹ Emission OBD Warranty on selected components, and a 5 year/unlimited km Corrosion Perforation Warranty. As a Nissan owner, you'll also receive a 3 year Roadside Assistance program available to you 24 hours a day. Terms, conditions and exclusions apply. See your Warranty Information Booklet for complete details.

Added Security Plan (ASP) For ultimate peace of mind, consider the Nissan Added Security Plan. It's our commitment to be there for you, and to help you leave your worries behind. Different plans, available for both purchased and leased vehicles, let you tailor the coverage to your driving habits.

Security+Plus™ Prepaid Maintenance Plan The smart choice when it comes to maintaining your new Nissan. Honoured at all participating Nissan Dealers in Canada and the U.S., your vehicle is cared for by factory-trained technicians using Genuine Nissan Parts. And best of all, there's no worrying about price increases on parts or service in the future. A variety of plans are available. Ask your Dealer for details.

²⁹Extra cost option.

CHOOSE YOUR TRIM LEVEL

SL

- 400-hp Endurance® 5.6-litre V8 engine²⁷
- Engine block heater
- 7-speed automatic transmission
- Intelligent 4x4 with 2-speed transfer case
- 13.8" front and rear vented disc brakes
- Anti-lock Braking System (ABS)
- Electronic Brake force Distribution (EBD) with Brake Assist³²
- Independent double-wishbone suspension with auto-leveling rear suspension and stabilizer bars
- Intelligent Cruise Control¹²
- Intelligent Driver Alertness¹³
- Intelligent Lane Intervention¹¹
- Intelligent Forward Collision Warning¹⁴
- Intelligent Emergency Braking with Pedestrian Detection⁷
- Intelligent Blind Spot Intervention¹⁰
- Intelligent Around View® Monitor¹⁵
- Front and Rear Sonar³³
- Rear Automatic Braking⁸
- High Beam Assist
- Hill start assist
- Trailer brake controller¹⁶
- Trailer Sway control¹⁶
- 20" 18-spoke aluminum-alloy wheels
- LED low/high-beam headlights with integrated signature
- LED Daytime Running Lights
- LED Fog Lights
- Power heated and folding body-colour outside mirrors with LED turn signal indicators and puddle lights
- Auto-dimming outside mirrors
- Acoustic windshield and front side windows
- Dark grey roof rails
- Power sliding glass moonroof
- Power liftgate
- Class IV tow hitch receiver with 7-pin wiring harness¹⁶
- Dual Zone Automatic Temperature Control
- Rear air conditioning with rear controls
- In-cabin microfilter
- Nissan Intelligent Key® with Push Button Ignition
- Remote Engine Start System²²
- HomeLink® universal garage-door opener
- Power tilt and telescoping steering column
- Intermittent rear window wiper




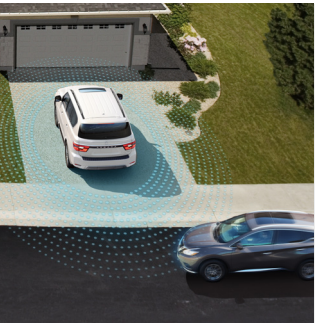
- Auto-dimming rearview mirror
- Three 12-volt DC power outlets⁴
- 120-volt AC power outlet³⁴
- Footwell lights
- Cargo-area storage under rear floor²⁸
- Eight cargo tie-down hooks²⁸
- 10-way power driver's and front passenger's seats
- Memory System – driver's seat, steering wheel, and outside mirrors
- Heated front seats
- Second-row 60/40-split fold-down bench seat and power recline and fold third-row 60/40-split (8 passenger capacity)²⁵
- Leather-appointed seats
- Leather-appointed door trim with double stitching
- Wood-tone trim
- Heated leather-wrapped steering wheel with contrast stitching
- 178 mm (7") Advanced Drive-Assist® Display^{2,35}
- NissanConnect® 312 mm (12.3") colour touch-screen display²
- Nissan Door to Door Navigation²¹
- Wireless Apple CarPlay® integration³
- Android Auto™³
- NissanConnect® Services powered by SiriusXM® with trial access to 5-year Select and Plus, and 6-month Premium packages^{3,36}
- NissanConnect® with Wi-Fi Hotspot³
- Voice Recognition²¹
- SiriusXM® Traffic and Travel Link® with 3-month complimentary trial access³⁶
- Hands-free Text Messaging Assistant²⁰
- Bluetooth® Hands-free Phone System³⁷
- Bose Premium Audio System with 13 speakers including centre speaker and subwoofer
- Bose AudioPilot™ Noise Compensation Technology
- SiriusXM® Radio with 3-month complimentary trial access³⁶
- Two USB-A and two USB-C connection ports⁴
- Wireless charger⁴
- Streaming Audio via Bluetooth®³⁷
- Nissan Advanced Air Bag System³⁸
- Vehicle Security System
- Nissan Vehicle Immobilizer System



PLATINUM

INCLUDES SL EQUIPMENT PLUS:

- Intelligent Back-up Intervention¹⁸
- Intelligent Rear View Mirror¹⁷
- Traffic Sign Recognition¹⁹
- 22" 14-spoke forged aluminum-alloy wheels
- Chrome outside mirrors
- Windshield wiper deicer
- Rain-sensing windshield wipers
- Illuminated cup holders
- Climate-controlled front seats (heated and cooled)
- Heated outboard second-row seats
- Quilted leather-appointed seats
- Tri-Zone Entertainment System with dual 203 mm (8") monitors, remote control, two wireless headphones, USB-A port and HDMI inputs^{4,26}




CAPTAIN'S CHAIRS PACKAGE

PLATINUM

- Second-row fold-down captain's chairs with tip-up easy entry for third row (7 passenger capacity)

- Second-row padded centre console with cup holders



SPECIFICATIONS

Engine	SL	Platinum
Endurance® 5.6-litre DOHC 32-valve V8 engine	■	■
400 HP @ 5800 rpm ²⁷		
413 lb.-ft. of torque @ 4000 rpm ²⁷		
Variable Valve Event and Lift (VVEL®) technology	■	■
Direct Injection Gasoline (DIG)	■	■
Engine block heater	■	■
Drivetrain		
Intelligent 4x4 with 2-speed transfer case ²³	■	■
7-speed automatic transmission with manual shift mode and Downshift Rev Matching	■	■
Final drive ratio (2.937:1)	■	■
Brakes		
13.8" front and rear vented disc brakes	■	■
Anti-lock Braking System (ABS)	■	■
Electronic Brake force Distribution (EBD)	■	■
Brake Assist ³²	■	■
Suspension/Chassis Bracing/Steering		
Independent double-wishbone front/rear suspension	■	■
Auto-leveling rear suspension	■	■
Front and rear stabilizer bars	■	■
Vehicle-speed-sensitive power steering		■
Driver Assistance Technologies		
Intelligent Cruise Control ¹²	■	■
Intelligent Driver Alertness ¹³	■	■
Intelligent Lane Departure Warning ¹¹	■	■
Intelligent Lane Intervention ¹¹	■	■
Intelligent Forward Collision Warning ¹⁴	■	■
Intelligent Emergency Braking with Pedestrian Detection ⁷	■	■
Blind Spot Warning ¹⁰	■	■
Intelligent Blind Spot Intervention ¹⁰	■	■
Intelligent Rear View Mirror ¹⁷		■
Rear Cross Traffic Alert ⁹	■	■
Intelligent Back-up Intervention ¹⁸		■
Intelligent Around View® Monitor ¹⁵	■	■
Front and Rear Sonar System ³³	■	■
Rear Automatic Braking ⁸	■	■
High Beam Assist	■	■
Traffic Sign Recognition ¹⁹		■
Hill Start Assist	■	■
Vehicle Dynamic Control (VDC) ³⁹ with Traction Control System (TCS)	■	■
Active Brake Limited Slip (ABLS)	■	■
Trailer sway control ¹⁶	■	■
Trailer brake controller ¹⁶	■	■
Wheels/Tires		
20" x 8.0" 18-spoke aluminum-alloy wheels	■	
22" x 8.0" 14-spoke forged aluminum-alloy wheels		■
P275/60R20 All-Season tires	■	
P275/50R22 All-Season tires		■

■ Standard CC Captain's Chairs Package

Exterior Features	SL	Platinum
LED low/high-beam headlights with integrated signature	■	■
LED Fog lights	■	■
Dark grey roof rails ²⁸	■	■
Body colour overfenders	■	■
Power heated and folding body-colour outside mirrors with LED turn signal indicators	■	
Power heated and folding chrome outside mirrors with LED turn signal indicators		■
Auto-dimming outside mirrors with puddle lights	■	■
Power sliding glass moonroof with one-touch open/close and tilt feature	■	■
Power liftgate	■	■
Windshield and front side window UV-reducing solar glass	■	■
Side and rear privacy glass	■	■
Class IV tow hitch receiver with 7-pin wiring harness ¹⁶	■	■

Comfort/Convenience		
Nissan Intelligent Key® with Push Button Ignition	■	■
In-cabin microfilter	■	■
Remote Engine Start System ²²	■	■
HomeLink® universal garage-door opener	■	■
Rear Door Alert ⁴⁰	■	■
Rear seat heater ducts under front seats	■	■
Tilt steering column	■	■
Variable intermittent windshield wipers	■	■
Rain-sensing windshield wipers		■
Intermittent rear window wiper	■	■
Windshield wiper deicer		■
Auto-dimming rearview mirror	■	■
Dual front map lights	■	■
Dual second- and third-row reading lights	■	■
Sun visors with illuminated vanity mirrors and extension	■	■
Three 12-volt DC power outlets ⁴	■	■
Dual Zone Automatic Temperature Control	■	■
Rear air conditioning with rear controls	■	■
120-volt AC power outlet ³⁴	■	■
Lockable glove compartment	■	■
Driver and front-passenger seatback pockets	■	■
Front and rear door storage pockets and third-row side trays	■	■
Footwell lights	■	■
Four cup holders and eight bottle holders	■	■
Overhead sunglasses storage	■	■
Illuminated cup holders		■
Cargo-area storage under floor ²⁸	■	■
Eight cargo tie-down hooks ²⁸	■	■

Seating/Appointments		
10-way power driver's and 8-way front passenger's seat including power lumbar support	■	■
Memory System – driver's seat, steering wheel, and outside mirrors	■	■
Heated front seats	■	
Climate-controlled front seats (heated and cooled)		■
Heated second-row outboard seats		■
Second-row 60/40-split fold-down bench seat with tip-up easy entry for third row	■	■
Second-row fold-down captain's chairs with easy entry for third row (7 passenger capacity)		CC

Seating/Appointments	SL	Platinum
Second-row padded centre console with cup holders		CC
Power recline and fold third-row	■	■
Third-row 60/40-split fold-down bench seat	■	■
Leather-appointed seats	■	
Quilted leather-appointed seats		■
Heated leather-wrapped steering wheel	■	■
Leather-wrapped shift knob	■	■
Leather-appointed door trim with double-stitching	■	■
Wood-tone trim		■
Birdseye Maple wood-tone trim		■

infotainment		
178 mm (7") Advanced Drive-Assist® Display ^{2,35}	■	■
NissanConnect® 312 mm (12.3") colour touch-screen display ²	■	■
Nissan Door to Door Navigation ²¹	■	■
Wireless Apple CarPlay® integration ³	■	■
Android Auto™ ³	■	■
SiriusXM® Traffic with 3-month complimentary trial access ³⁶	■	■
NissanConnect® Services powered by SiriusXM® with trial access to 5-year Select and Plus, and 6-month Premium packages ^{3,36}	■	■
NissanConnect® with Wi-Fi Hotspot ³	■	■
Wireless charger ⁴	■	■
Hands-free Text Messaging Assistant ²⁰	■	■
Bose Premium Audio System with 13 speakers, including subwoofer	■	■
SiriusXM® Radio with 3-month trial access ³⁶	■	■
Tri-Zone Entertainment System with dual 203 mm (8") monitors, two wireless headphones, USB-A port and HDMI inputs ²⁶		■
Two USB-A and two USB-C connection ports ⁴	■	■
Streaming Audio via Bluetooth® ³⁷	■	■
Steering wheel-mounted controls	■	■

Safety/Security		
Nissan Advanced Airbag System with dual-stage supplemental front airbags with seat belt and occupant-classification sensors ³⁸	■	■
Driver and front-passenger seat-mounted side-impact supplemental airbags ⁵⁸	■	■
Roof-mounted curtain side-impact supplemental airbags for outboard occupant head protection for all three rows ⁵⁸	■	■
LATCH System (Lower Anchors and Tethers for Children)	■	■
Child-safety rear door locks	■	■
Tire Pressure Monitoring System (TPMS) with Easy Fill Tire Alert ^{41,42}	■	■

PACKAGE

CC Captain's Chairs Package
• Second-row fold-down captain's chairs with tip-up easy entry for third row (7 passenger capacity)
• Second-row padded centre console with cup holders

Nissan's environmental action plan focuses on several key areas. In addition to increasing production of Zero Emission vehicles like the 100% electric LEAF,® we're improving fuel efficiency across our lineup, and reducing the environmental impact of manufacturing through energy-efficient practices in our plants.



DIMENSIONS/CAPACITIES/WEIGHTS/FUEL

Exterior Dimensions — mm (Inches)	
Wheelbase	3075 (121.1)
Overall length	5305 (208.9)
Overall width	2030 (79.9)
Overall height	1925 (75.8)
Track width (front/rear)	1715 (67.5) / 1725 (67.9)

Vehicle Clearance - mm (Inches)	
Ground Clearance	234 (9.2)
Angle of approach (degrees)	21
Angle of departure (degrees)	22.4
Head room (front)	1012.7 (39.8)
Breakover angle (degrees)	20.7

Interior Dimensions — mm (Inches)	
Head room (front)	1012.7 (39.8)
Head room (2nd/3rd rows)	1015.2 (40) / 924 (36.4)
Leg room (front/2nd/3rd rows)	1065.2 (41.9) / 989.4 (39) / 718.8 (28.3)
Hip room (front/2nd/3rd rows)	1503.4 (59.2) / 1482.6 (58.4) / 1240 (48.8)
Shoulder room (front/2nd/3rd rows)	1620 (63.8) / 1611.6 (63.4) / 1537 (60.5)

Capacities	
Seating capacity with 2nd-row bench seat	8
Seating capacity with Captain's Chairs	7
Fuel tank — L (Imp. gal.)	98.3 (21.6)
Maximum towing capacity — kg (lbs.) ¹⁶	3856 (8500)
Tongue weight capacity — kg (lbs.)	385 (850)

Curb Weights — kg (lbs.)		
	SL	Platinum
4WD	2731 (6021)	2742 (6046)
4WD with Captain's Chairs	—	2742 (6046)
2021 Fuel Economy Estimate — L/100 km (MPG) ⁴³		
City	17.5 (16)	
Highway	12.9 (22)	

— Actual mileage may vary with driving conditions — use for comparison only.

NISSAN ARMADA®

Isn't it time you were passionate about the vehicle you drive?
Welcome to the 2021 Armada.

Follow Nissan Canada on:

