



MOTOR CARS
SERIES E

Models

SEDAN

ROADSTER

COUPE

SPORT PHAETON

du Pont Motors, Inc.

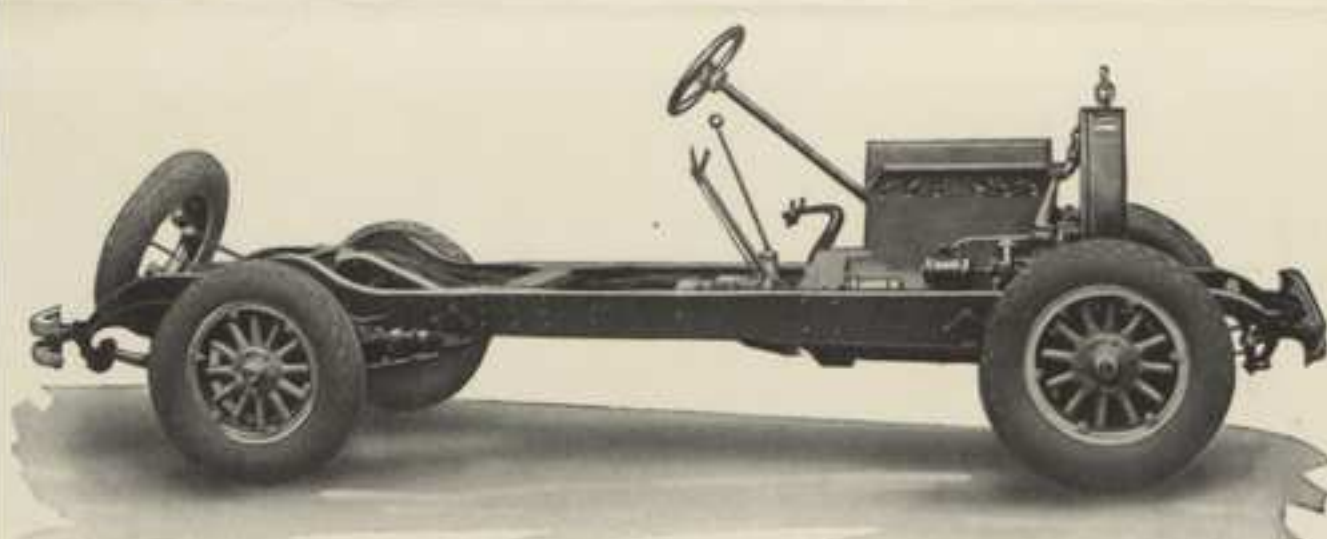
Wilmington, Delaware

Trade
Cat
D953
1921a

Auto Show 1927



MOTOR CARS SERIES E



SPECIFICATIONS

MOTOR: Valve in head. Six cylinders, cast en bloc; detachable head; bore, $3\frac{3}{8}$ " ; stroke 5" ; S. A. E. rating, 27.34 H. P. ; develops 70 H. P. at 3000 R. P. M. Piston displacement 268 cubic inches.

VALVES: Special heat-resisting alloy; very quiet valve action.

PISTONS: Light weight special design for high engine speeds.

CONNECTING RODS: Drop-forged steel, specially heat-treated.

CRANKSHAFT: Drop-forged, heat-treated steel crankshaft, supported by 3 very large bearings. Dimensions of bearings, Front $2\frac{1}{2}$ x $2\frac{11}{32}$ " ; center $2\frac{1}{8}$ x $2\frac{3}{4}$ " ; rear $2\frac{1}{2}$ x $2\frac{3}{4}$ " .

CAMSHAFT: 3 bearings of more than ample size, hardened and ground.

CAMSHAFT DRIVE: By link belt chain of large proportions, with automatic take-up. This insures freedom of adjustment for thousands of miles of operating, as well as absolute silence.

MOTOR OILING SYSTEM: Force feed pressure system by gear pump. Oil is fed by adjustable regulated pressure to crankshaft main and connecting rod bearings, and also to the overhead valve system. 10 quarts of oil carried in crankcase.

MOTOR COOLING SYSTEM: Cooling is by centrifugal pump, circulating water through very large cylinder water passages, insuring adequate cooling under hottest climatic or trying traffic conditions. Large tubular type radiator with 5 gallon capacity.

CARBURETION: Provides high velocity at low speed, with high speed air and gas adjustment. Hot spot in manifold. Combination gives excellent gas distribution, economy of fuel, easy starting, motor flexibility and power.

ELECTRIC SYSTEM: 6 volt system; 113 ampere hour battery; separate unit starter and generator.

IGNITION SYSTEM: Coil and Distributor.

WIRING: Fuses provided for all circuits, with two spare fuses in clips; fuse box conveniently located under hood.

CLUTCH: Multiple disc, dry plate clutch.

TRANSMISSION: Constant mesh type with selective shift; unit with power plant; three speeds forward and one reverse. This transmission absolutely prevents any possibility of clashing of gears, and shifting from higher to lower gear possible without difficulty at almost any speed. A very pronounced feature of safety and ease of operation.

STEERING: Cam and lever type of steering gear, providing exceptionally easy steering; especially designed for balloon tires; 18" corrugated wood steering wheel, with steering post fastened to adjustable bracket so that drivers of different stature can operate the car in comfort.

FRONT AXLE: Special design; large 1 beam section of carefully heat-treated alloy steel.

REAR AXLE: Semi-floating type of special heat-treated alloy steel; spiral bevel ring and pinion gears; roller bearings throughout.

GEAR RATIOS: 4.7 to 1 for closed models; 4.45 to 1 for open models.

WHEELS: Natural wood of carefully selected spokes; artillery type; steel felloe bands; tapered roller bearings in both front and rear wheels.

TIRES: Full balloon cord tires, 32" x 6.20".

BRAKES: Easy acting, but exceptionally effective 4-wheel hydraulic brakes operated by foot pedal. Emergency hand-brake operating on propeller shaft directly in rear of transmission.

SPRINGS: Extra long, flexible flat type made of special chrome vanadium steel. Front springs 2" wide, 40" long, rear springs, $2\frac{1}{2}$ " wide, 60" long.

SPRING SHACKLES: Rubber impregnated fabric shackles, forming a cushion between springs and frame. This construction is especially rugged and long-lived. It positively eliminates chassis rattles and reduces chassis lubrication to a minimum.

FRAME: Pressed steel channel, 7" deep; 5 rigid cross member supports give frame torsional stiffness and insure freedom from body weave.

GASOLINE SUPPLY: Vacuum tank system; 22-gal. tank with 2-gal. reserve supply, located at rear of frame.

WHEELBASE: 125 inches.

TREAD: 57 inches.

EQUIPMENT: Watson stabilizers, extra tire and tube; heavy type front and rear bumpers, both having specially designed frame attachments; full tool equipment; electric vibrator horn; automatic windshield wiper; full set of instruments, including 8-day clock, mounted on instrument board, under glass; rear view mirror.

BODIES: Special custom bodies for all models; open car bodies upholstered in finest grade of hand buffed leather; closed bodies upholstered in imported cloth of textures and colors to match paint combinations selected; hardware fittings and appointments of best grade throughout.

MODELS AND PRICES:

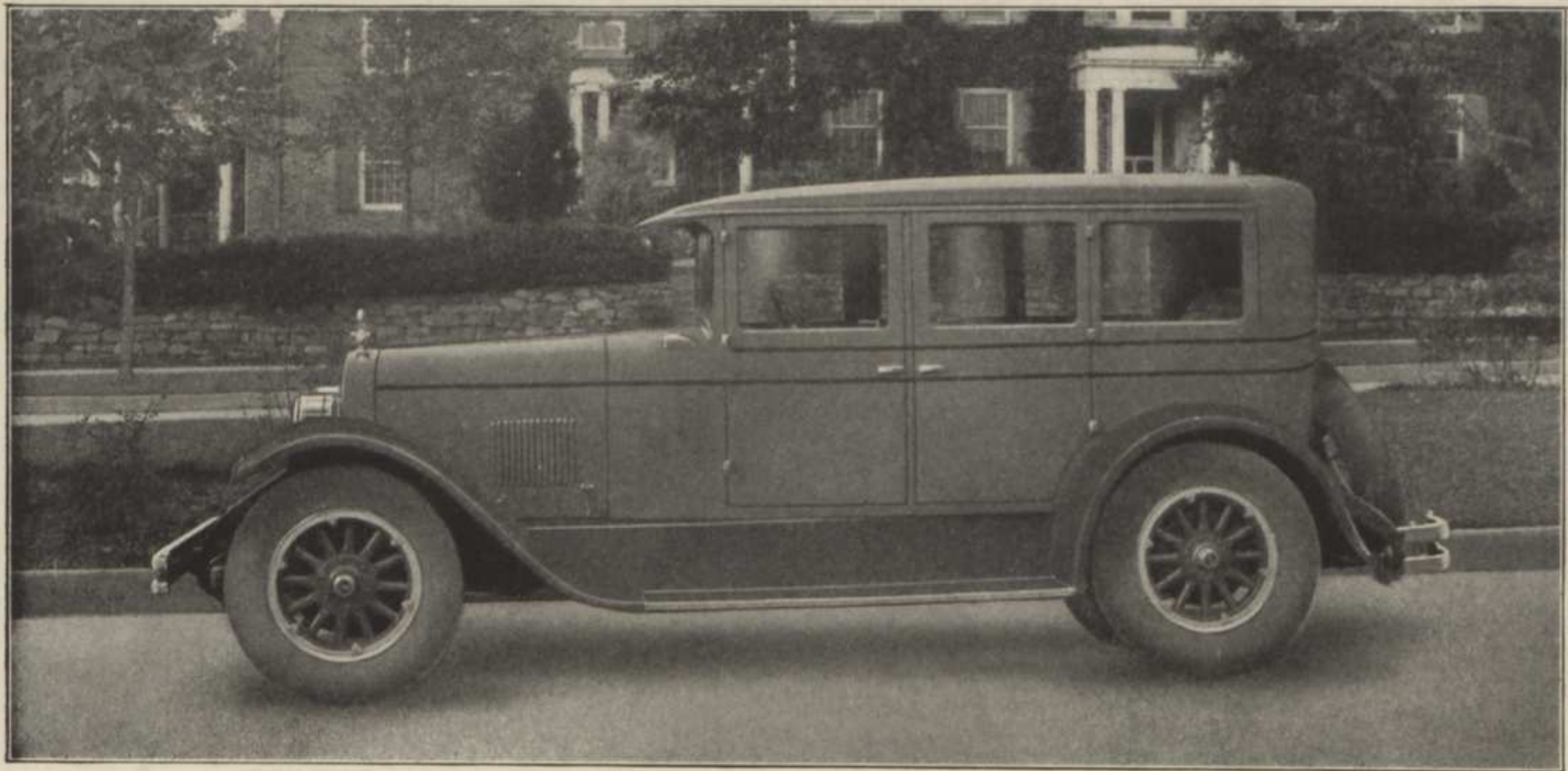
5-Passenger Sedan	\$3400.00
4-Passenger Rumble-seat Coupe	3200.00
4-5-Passenger Sport Phaeton	2800.00
4-Passenger Rumble-seat Sport Roadster	2800.00

(Other special models, prices quoted on request.)

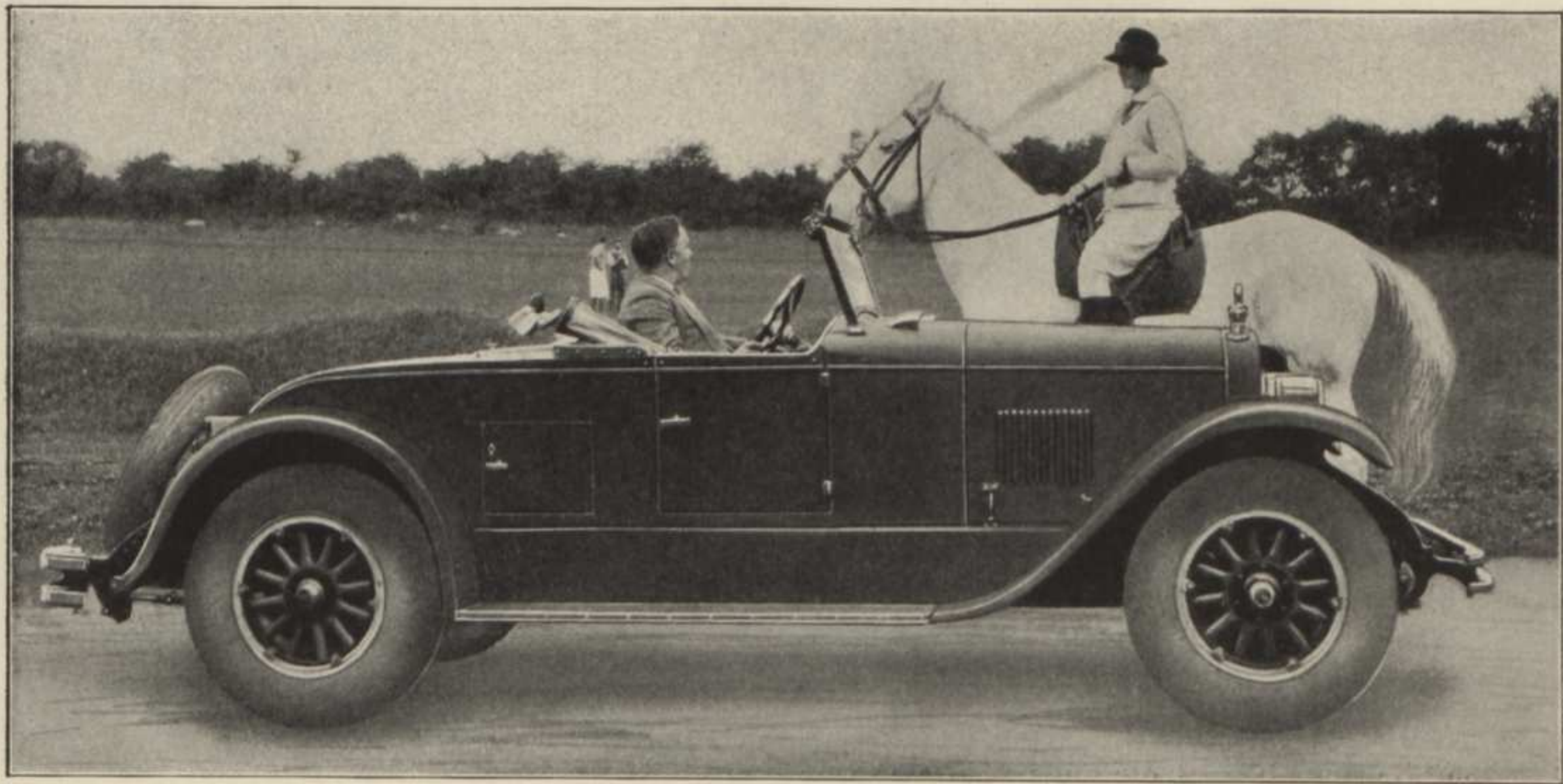
All prices f. o. b., Wilmington, Delaware, government tax to be added.

DUPONT MOTORS, INC.

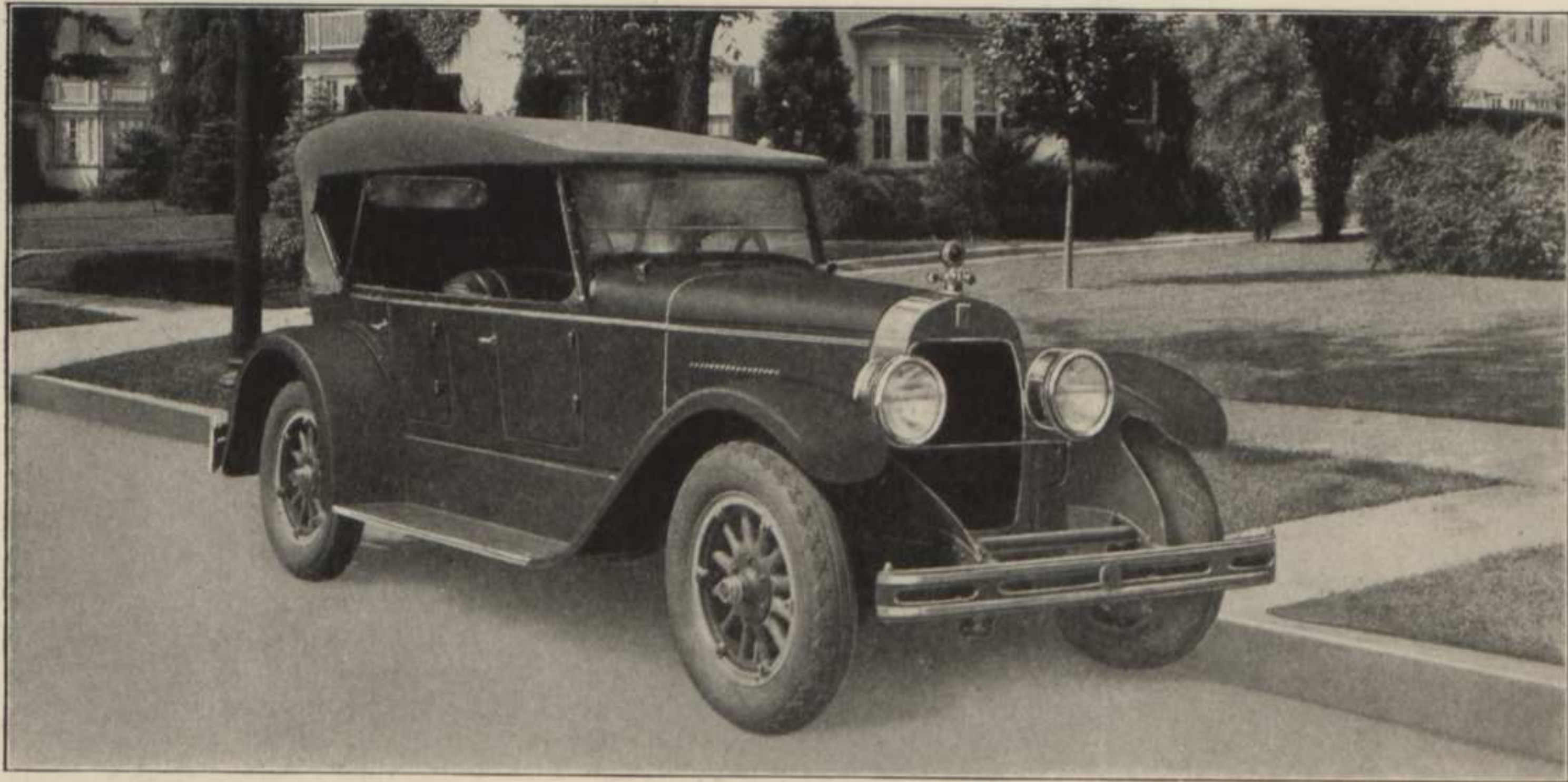
Wilmington, Delaware



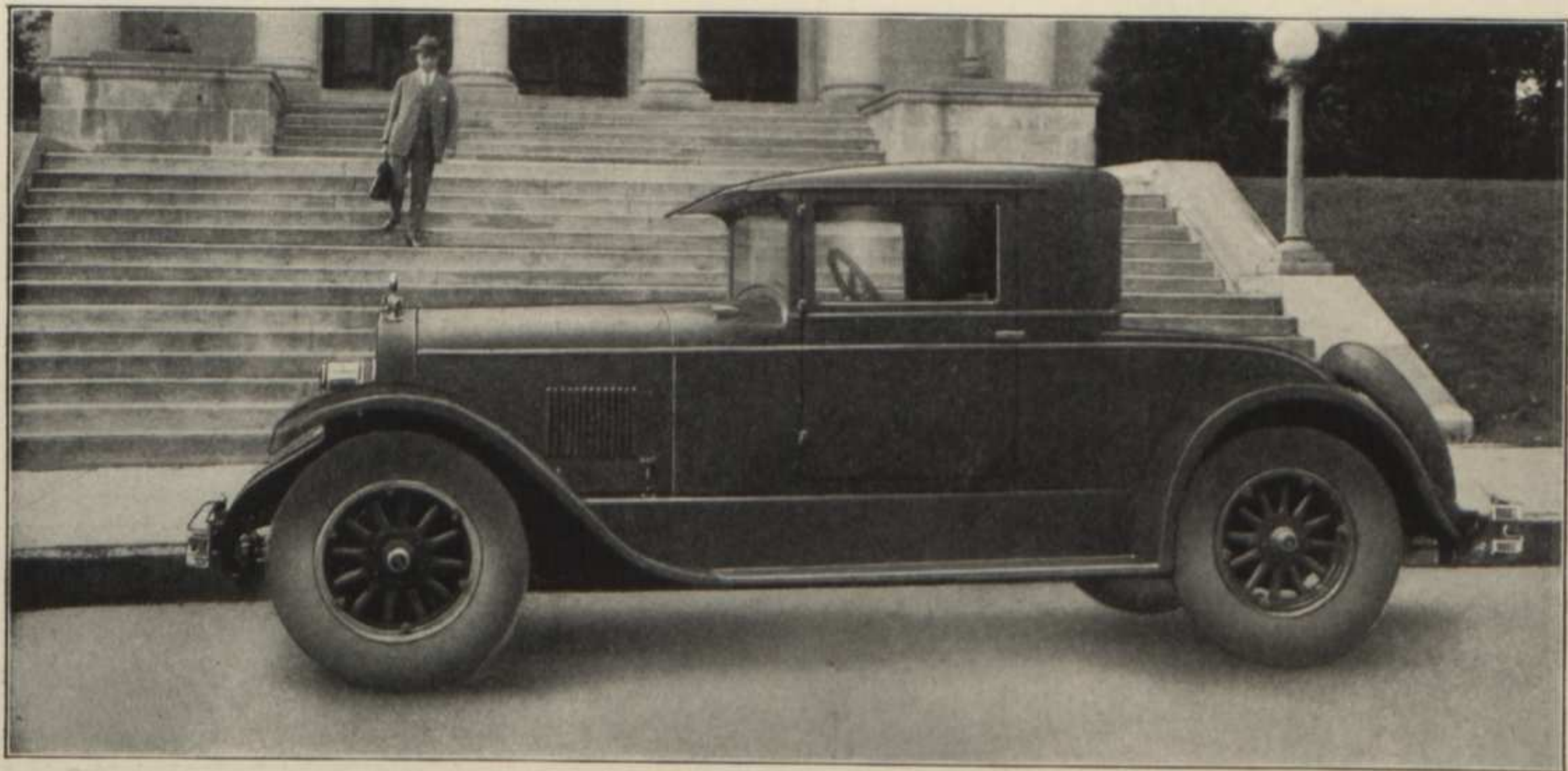
DU PONT FIVE-PASSENGER SEDAN



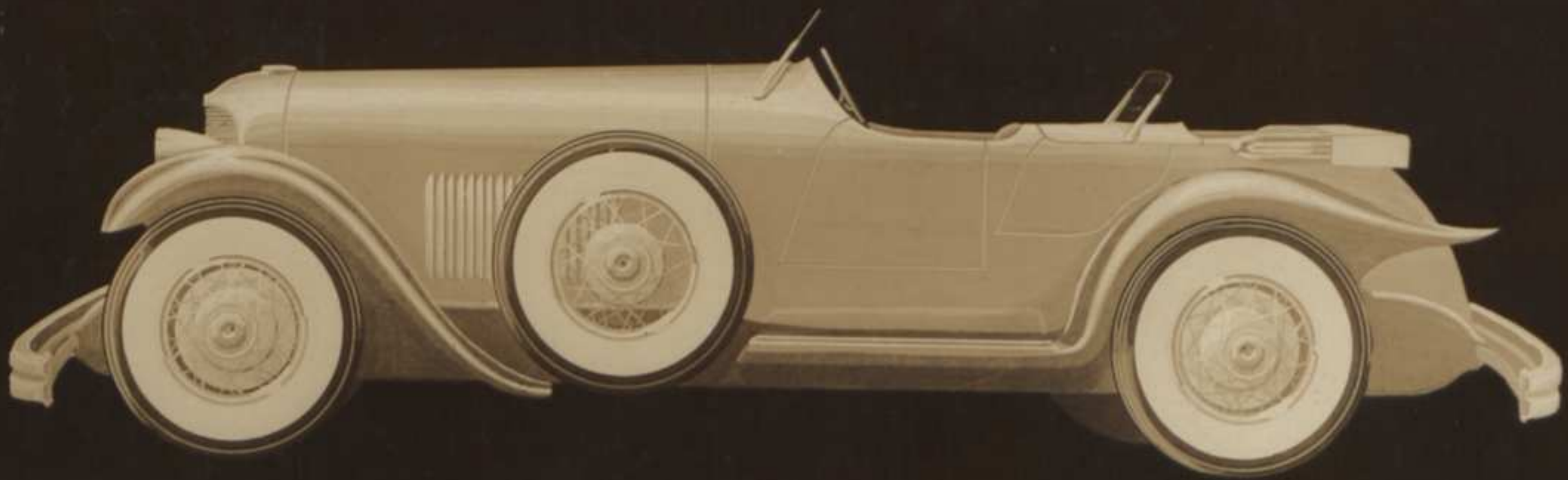
DU PONT FOUR-PASSENGER ROADSTER



DU PONT SPORT PHAETON



DU PONT FOUR-PASSENGER RUMBLE SEAT COUPE



DUPONT

4 Passenger Speedster

du Pont Motor Cars

502 Park Ave., N. Y. C.