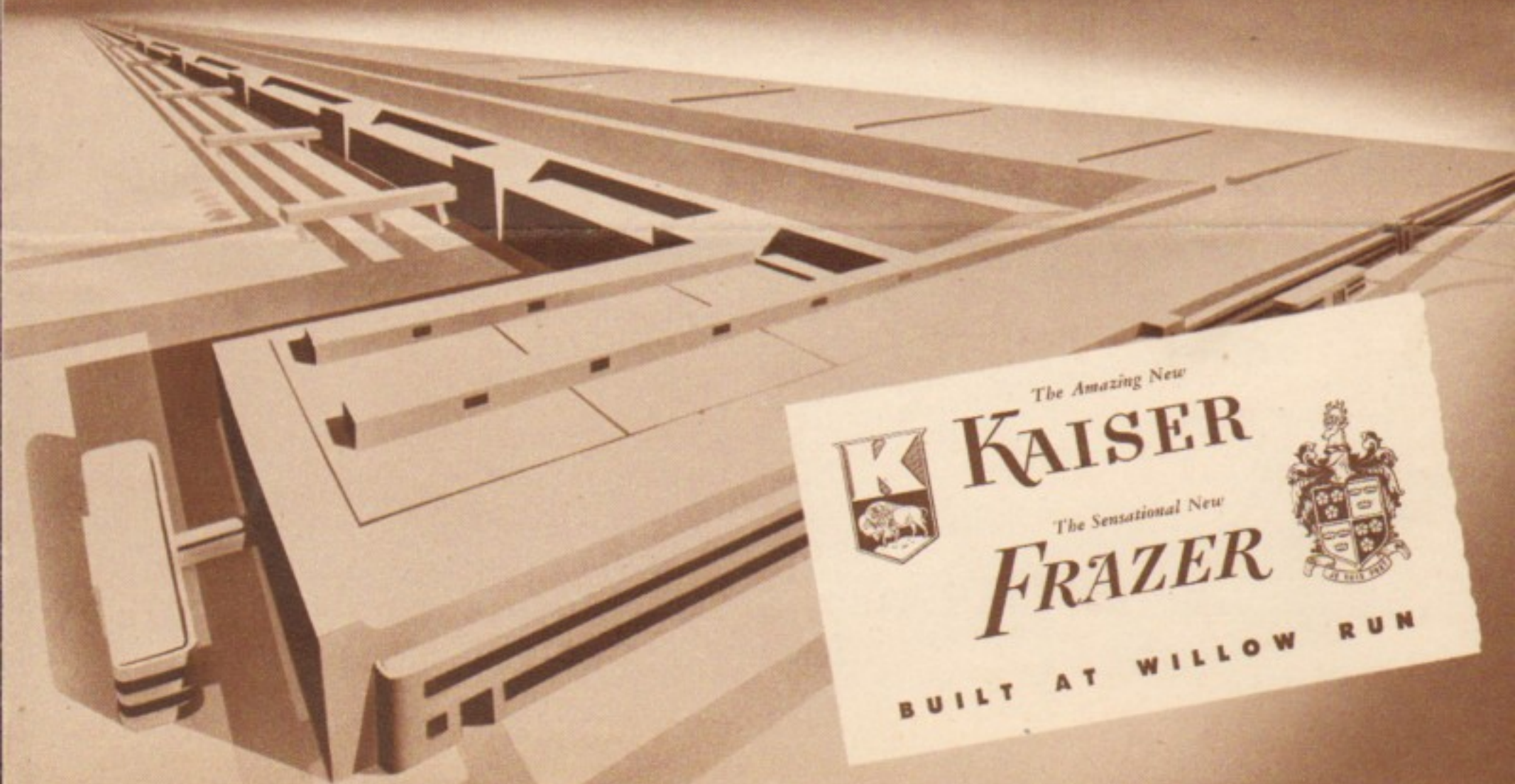


A Full Year Ahead!



America's First 1947 Motor Cars -



The Amazing New
KAISER
The Sensational New
FRAZER
BUILT AT WILLOW RUN

BRILLIANTLY ENGINEERED • SMARTLY DESIGNED • HONESTLY BUILT!

Radchough

Presenting THE AMAZING NEW 1947

KAISER

KAISER-FRAZER PRODUCT



FRONT-WHEEL DRIVE...LOW PRICE...BIGNESS...BEAUTY



**"PACKAGED POWER"
UNIT BODY-AND-FRAME
"TORSIONETIC" SPRINGING**

Shown above are two of the time-tested, war-perfected engineering features you will see for the first time in the amazing new Kaiser. "Packaged Power" Front-Wheel Drive combines engine (1), clutch (2), transmission (3), and final drive assembly (4), all in a single unit which can be lifted clear of the integral body-and-frame for easy service.

In KAISER's new "Torsionetic" Suspension, each wheel is given independent springing, accomplished through spindle (A), supporting arm (B) and torsion-bar spring (C), anchored at (D). Twisting action of steel bar supplies springing effect. Hydraulic shock-absorbers complete the assembly, giving new smoothness of ride at all passenger-loads.

KAISER invades the low-price field with a great new 1947-model car—a full year in advance. So forward-looking in its conception, yet so sound and thorough in its engineering, this is the car you cannot afford

to miss seeing. When you have once experienced its unrivaled roominess, roadability and ride, you will truly appreciate the modern engineering triumph which this amazing new automobile represents.

...And THE SENSATIONAL NEW 1947

FRAZER

GRAMM-PAIGE PRODUCT



POWER...QUALITY...LUXURY...STYLE

A full year ahead of the field in styling and engineering advances, this great new 1947 FRAZER is presented for your approval. Definitely designed for your maximum comfort at all speeds and under all conditions of travel, every detail entering into the new FRAZER has been tested and perfected in actual use, to give you an entirely new conception of modern motoring pleasure!

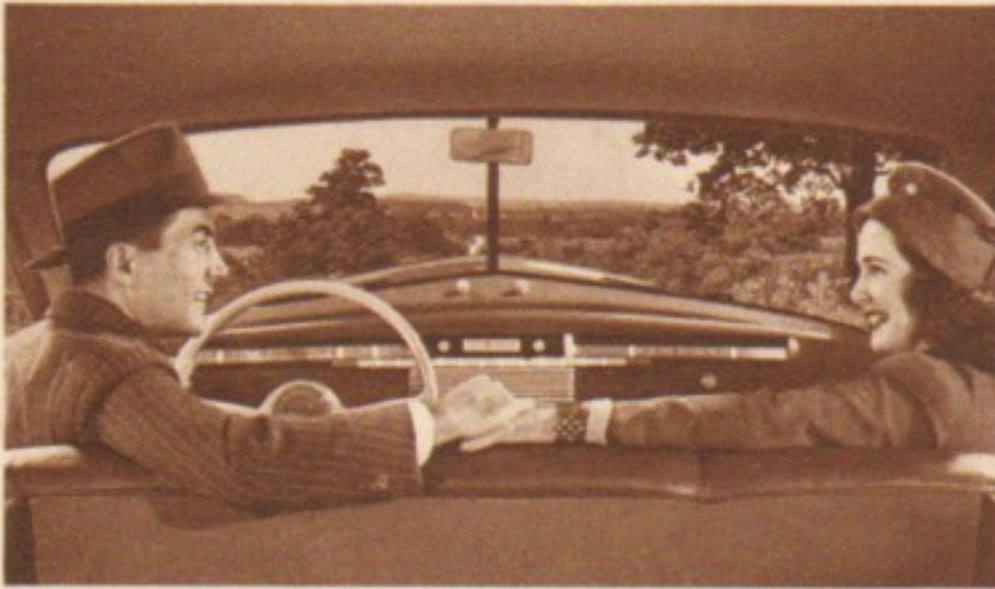


Howard Darrin, internationally famed stylist of the world's most luxurious motor cars, created the smartly clean, smooth-flowing lines of this new queen of the highways. With interior appointments to match its external elegance, the new FRAZER sets the style pace for the future in the quality-car field.

A mighty engine whispers beneath this gleaming hood, powering the rear wheels through a special precision balanced, center-bearing drive shaft.

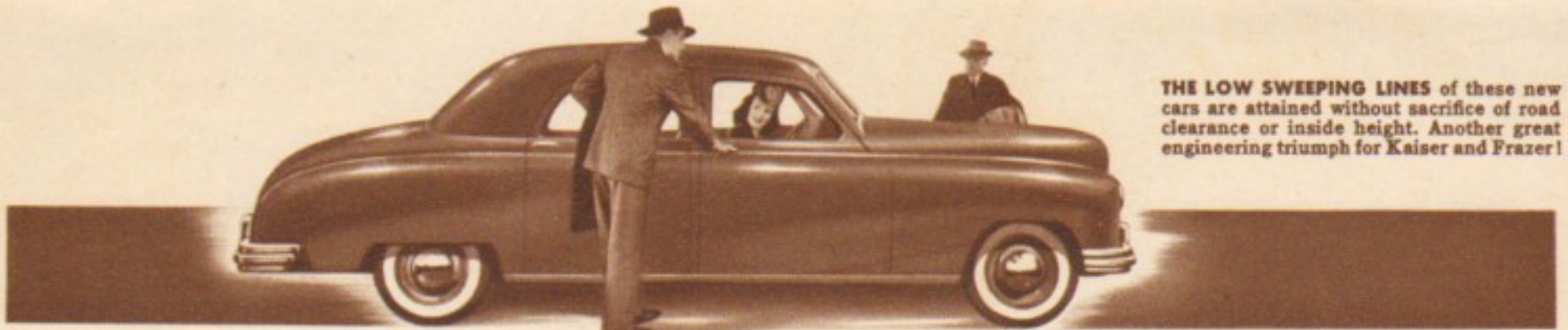


UNSURPASSED FOR ROOMINESS AND COMFORT!




ROOM FOR A FAMILY! The uncrowded comfort of the extra width in both front and rear seats gives you amazing new luxury and convenience in every ride!

THE 1947 KAISER AND FRAZER offer you unprecedented roominess! Unusually wide rear seats, made possible by placement ahead of rear wheel housings, hold *four people easily, three in supreme luxury!*



THE LOW SWEEPING LINES of these new cars are attained without sacrifice of road clearance or inside height. Another great engineering triumph for Kaiser and Frazer!

CONDENSED AT-A-GLANCE SPECIFICATIONS

KAISER 

ENGINE—"Packaged Power" Front-Wheel Drive, with engine, clutch, transmission and final drive built as a unit; 6-cylinder, L-head; S.A.E. horsepower rating 25.3; Bore $3\frac{1}{4}$ "; Stroke $3\frac{3}{4}$ "; Drop-forged counter-weighted crankshaft with 4 main bearings; Rubber engine mountings; Rifle-drilled connecting rods; Aluminum alloy pistons; Compression ratio 7.3:1 (ideal for today's improved gasoline); Gear shift under steering wheel; Automatic choke; Hand throttle; Piston displacement, 187 cu. in.

BRAKES—Weather-protected, double-acting hydraulic; Mechanical parking brake, left of driver.

SPRINGS—"Torsionetic" independent suspension.

FRAME—Unit-type, integral with body.

BODY—All-steel, integral with frame; Safety glass throughout; Large curved glass rear window; Large-capacity luggage compartment in rear holds spare tire; Upholstery in specially chosen fabrics.

HEATER—Takes fresh air from front grill.

MUFFLER—Oval-type, 3-pass.

DIMENSIONS—Over-all length 197"; Height unloaded $63\frac{1}{2}$ "; Wheel base 117"; Width at widest point $72\frac{3}{8}$ "; Front tread 58"; Rear tread 60"; Tires 15 x 5.50.



FRAZER

ENGINE—6-cylinder, L-head; S.A.E. horsepower rating 26.3; Bore $3\frac{1}{4}$ "; Stroke $4\frac{3}{8}$ "; Drop-forged counter-weighted crankshaft with 4 main bearings; Rubber engine mountings; Rifle-drilled connecting rods; Aluminum alloy pistons; Compression ratio 7.3:1; Piston displacement 226 cu. in.; Gear shift under steering wheel; Automatic choke; Hand throttle.

BRAKES—Weather-protected, double-acting hydraulic; Mechanical parking brake, left of driver.

SPRINGS—Rear, rubber mounted, semi-elliptic, 53" long, $1\frac{3}{4}$ " wide; Front, helical type, knee action.

FRAME—Box-section type, with box-section cross-members, for extreme strength and rigidity.

BODY—All-steel; Safety glass throughout; Large curved glass rear window; Large-capacity luggage compartment in rear holds spare tire; Upholstery in specially chosen fabrics, with two-tone effects.

HEATER—Under front seat, thermostatic temperature selector.

MUFFLER—Oval-type, 3-pass.

DIMENSIONS—Over-all length 197"; Height unloaded $64\frac{1}{2}$ "; Wheel base $123\frac{1}{2}$ "; Width at widest point $72\frac{3}{8}$ "; Front tread 58"; Rear tread 60"; Tires 15 x 6.50.

KAISER-FRAZER CORPORATION • Willow Run, Michigan • GRAHAM-PAIGE MOTORS CORPORATION