



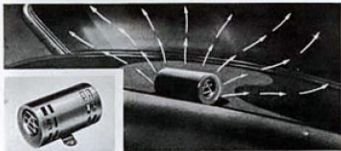
REAR WINDOW WIPER

With the wide expanse of sloping glass in the rear windows of modern cars, a Rear Window Wiper is a practical necessity. Vacuum operated with control on the instrument panel, rain cannot obscure driver's rear vision.



VENTSHADES

Ventshades allow windows to be partially open for fresh air to circulate no matter how hard it rains or snows; prevent condensation from fogging the windshield and windows; and protect eyes from sun glare. Ventshades fit into the window frames, and blend with the car's lines. Made of stainless steel, they are highly polished on the outside and finished in soft green on the inside. They won't rust or corrode.



AIR CIRCULATOR

The wide sloping rear window may become "fogged" or frosted in rainy weather, and the driver's rear vision is obscured. The air circulator, controlled by a switch on the dash, quickly clears steam or frost from the window.

WINDSHIELD VISOR

The KF Windshield Visor is a "year 'round" accessory. In winter months the visor minimizes snow glare and helps to keep the windshield free of snow, sleet and freezing rain when car is parked. In summer, visor protects against direct rays of sun and glare, making driving more enjoyable.



HEAVY DUTY PURPOSE OIL FILTER AND ELEMENT

Not only filters the oil very efficiently, but cools it as well. Its exclusive finning arrangement draws excessive heat from the oil body, lessening oil consumption. The cartridge effectively removes dirt and carbon from the oil, thus increasing the life of the lubricant,

reducing engine wear, and resulting in better performance and economy.



LUSTER-SEAL HAZE CREAM

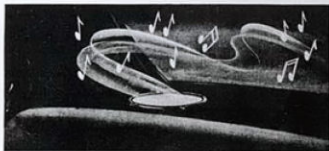
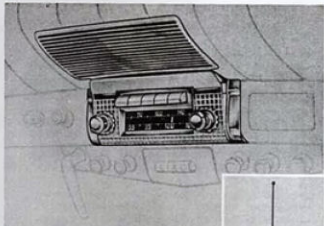
While Haze Cream is primarily designed to use after Luster-Seal has been applied, it is an excellent polish on any type finish. For painted, enameled or lacquered finish and for chromium or glass parts. Equally good for household refrigerators, etc.





STYLED AND ENGINEERED 8-TUBE DELUXE RADIO

The Kaiser radio provides the finest reception possible in an 8-tube automobile radio. The superb tone of the 9-inch speaker—the convenience of 5 pre-selected stations—the extra power for plus performance—all contribute to full satisfaction with this unit.



REAR SEAT SPEAKER

For radio reception at its finest, the 9-inch oval speaker mounted in the rear seat package tray makes the full volume of all programs available to all car occupants. The dash control permits use of either or both speakers, as desired.



SPOTLIGHT

You'll bless its long-range beam when you want to pick out street and route signs and

house numbers at night. Operated by a handy pistol-grip handle inside the car. The sealed-beam lamp has a brilliant chrome head.



HAND SPOTLIGHT

The Hand Spotlight equipped with a sealed beam lamp serves a dual purpose. Plugged into the lighter socket, its powerful beam illuminates house numbers and street signs. The 12-ft. cord permits use as a trouble light around any part of the car.



FOG LIGHTS

These extra-vision fog lights will prove invaluable to you when driving through snow, fog, and rain. The amber-colored lenses in the sealed-beam lamps penetrate the most inclement weather. A real boon to safe driving—and an attractive addition to your car.

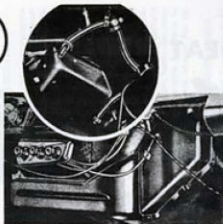
REAR COMPARTMENT LIGHT

This Light provides illumination for placing or removing luggage or tools in the rear compartment. Lights automatically when deck lid is raised and turns off when lid is closed. Operates only when car lights are turned on.



ANTENNAS

Both the 62" or 93" manual and the vacuum operated Antennas are engineered with the radio for the utmost in distance and quality of radio reception. For areas where signals are weak and reception normally poor, the 93" manual will "bring them in".



ELECTRIC SHAVER

A fairly recent newcomer to the Kaiser-Frazer line of accessories. A Remington dual-purpose electric shaver with two cords, one to plug into any house outlet and one which plugs into the cigarette lighter of your car. It has five shaving heads, and operates on either 110-120 AC-DC or 6-volt current—a dual appeal to the traveling man, hunter, fisherman, vacationist and the busy businessman.



AIR CONDITIONER WITH DEFROSTER

The 100% fresh air unit with automatic temperature control provides the ultimate in cold weather comfort. Fresh heated air prevents windows from steaming and the defrosting arrangement assures a clear windshield for safe, comfortable driving.



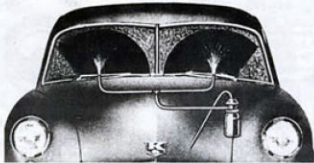
ELECTRIC CLOCK

A handsome and useful addition to your instrument panel. Large, easy-to-read numerals. Illuminated at night with subdued light, which prevents any glare.



BACK-UP LIGHTS

With car lights on and gear shift in reverse, Back-up Lights installed in the fenders beneath the tail lamps, fully illuminate dark streets and driveways, and give the driver a clear view of the area directly behind the car.



WINDSHIELD WASHER

A button on the instrument panel operates the two jets of water that spray the windshield. Then the wipers sweep off mud, slush, insects, or dust. A two-quart reservoir is easily accessible in the engine compartment. A special anti-freeze solution is available to prevent ice from forming on the windshield.

OUTSIDE REAR VIEW MIRRORS

CLAMP-ON TYPE

The 4 1/2" streamlined mirrors, fully chrome plated, add beauty and harmony to the Kaiser car. Adjustable right or left, mirrors clamped to the flange of either or both front doors, provide a clear view of the road behind.



VANITY MIRROR

Clips on either sun visor; is out of sight when visor is raised, but instantly available as soon as it is lowered. Appreciated by ladies for freshening makeup. Frosted spaces are provided on either side for travel and service records.

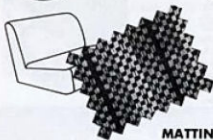


DOOR PANEL TYPE

For real streamlined beauty, this Deluxe mirror is installed on the door within easy range of the driver's vision. With two-way adjustment, mirrors installed on both doors give the driver full view of cars approaching to pass on either right or left side of car.

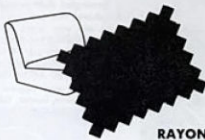


Custom Made SEAT COVERS



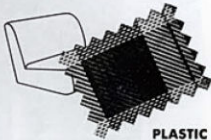
MATTING

The Matting Covers are the best quality fibre, vinyl coated to resist fading, fire and water damage and to add a finished sheen. Tailored to fit the seats for long lasting comfort and protection. Available in maroon, green, or blue to harmonize with car interiors.



RAYON

Cloth Seat Covers, of an excellent grade of rayon, are easily cleaned without removing from the seat. Solid colors in maroon, green, and blue, trimmed with white vinyl piping, give that conservative, finished appearance to all cars.

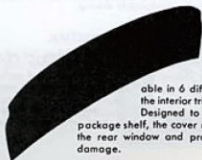


PLASTIC

Custom-tailored to create the perfect ensemble in car interior, the beautiful plaid designs in plastic will please every purchaser. Smooth, comfortable, easily cleaned and fade proof, plastic seat covers are growing steadily in owner approval.

AIR RIDE CUSHION

"Comfort" is the thought behind the purchase of an Air Ride Cushion. The rubber cushion, orally inflated, is covered with attractive matting and its use assures a comfortable seat, in the car, at ball games, picnics, or in porch furniture.



PACKAGE SHELF COVER

This unit, of beautifully embossed heavy fibreboard, is available in 6 different colors to match the interior trim on all 1951 Kaisers. Designed to fit the contour of the package shelf, the cover reduces sun glare thru the rear window and protects the finish from damage.

PLASTIC WHITEWALLS

The attractive discs which fit around the hub caps, enhance the beauty of the wheels and give the appearance of white side wall tires. The smooth plastic whitewalls are quickly installed and easily cleaned with ordinary washing.



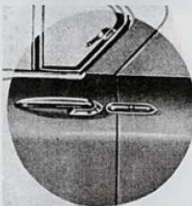
DO-NUT WHEEL DISCS

Do-nut Discs create the illusion of all chrome wheels at minimum cost. Beautifully finished stainless steel add more "flash" and "dress-up" to the car. Easily installed in permanent location under the hub caps.



LICENSE PLATE FRAMES

Increase the beauty of your car; hide the rusty and unfinished edges of your license plates; and prevent their edges from becoming bent. Plates slide into the frames and are held in place by a clamp.



SAFETY CAR DOOR KIDDIE LOCK

You may have the convenience of a 4-door Sedan with the safety of a 2-door by installing Safety Locks. With the Locks in place, doors cannot be opened from inside. Children cannot fall out when car is in motion.

FUEL TANK COVER LOCK

Protect your gas tank with this cylinder lock for the filler neck cover. Not only prevents gas being stolen from the tank, but also stops any cover vibration at high speeds.



EXHAUST DEFLECTOR

Masks tail pipe and deflects exhaust fumes downward, preventing discoloration of rear bumper and rear deck. Also adds to the car's beauty by covering the unsightly exhaust pipe. Made of heavy gauge steel, it will withstand heat and exposure. Its chrome finish is protected by a built-in baffle.



PROTECTIVE MATERIALS

SEALZIT

This plastic base solution flows freely into cracks between glass and rubber. The highly volatile liquid in this solution soon evaporates leaving a transparent plastic seal. An excellent adhesive for rubber mouldings.

WHITE SIDEWALL TIRE CLEANER

KF White Sidewall Tire Cleaner is a quick, effective cleaner which easily removes dirt and grease stains from white sidewall tires without injury or discoloration of the tire wall.

POLISH AND CLEANER

An especially prepared compound which removes dullness and road film from enameled and lacquered finishes. Cleans and polishes in one operation. Restores original brilliance and color. Easy to use.

PRESS-TITE SEALING CORD

Press-Tite Sealing Cord is a putty-like material for sealing water and air leaks around windshield or other openings in automobile bodies. An excellent sound insulator at sheet metal contact points.

LUBRIPLATE

Lubriplate actually plates metal parts with a film of lubricant. For use on lock cylinders, door or hood latches and on key guides. Repels water from lock cylinders and prevents freezing of locks during winter months.

WINDSHIELD WASHER SOLVENT

Windshield Washer Solvent added to clear water in the container aids in effectively cleaning the windshield of traffic film, oil or grime, and prevents solid ice in the cleaning solution during cold weather.

CLEANER AND WAX

This product protects the finish of new cars and restores original color and brilliance to all car surfaces. Leaves long lasting wax film. Cleans, waxes and polishes at the same time. An outstanding development.

RADIATOR STOP LEAK

Instantly repairs seeping leaks in radiator, water jacket and circulating system of automobiles. Stays in solution. Cannot clog or injure any portion of system. Mixes with all standard types of anti-freeze.

CHROME POLISH

Removes tarnish, stain and road film from automobile bumpers and all chromium fittings. Very easy to use. Cannot scratch or harm the finish. Excellent also for nickel and brass.



COOLING SYSTEM RUST RESISTOR

Resists rust and scale in cooling systems of automobiles and tractors by depositing thin film over entire interior surface. This retards corrosion which causes overheating. Lubricates water pump. Equally efficient when used with either hard or soft water and with standard types of anti-freeze.

GLASS CLEANER

Removes dirt, grease, road film and bug stains from windshields, windows and headlights. Easy to use. Leaves a dry, clean surface. Inures clear vision. Does not reflect glare. Excellent in the home for mirrors, windows and tile.

BLACK RUBBER FINISH

Gives new rubber appearance to old tires, running boards and floor mats. Increases sealability of used cars. Dries quickly.

GENERAL USE OIL

A skillfully blended, wax free, light bodied oil for general use in home, garage, office and shop. Excellent for firearms and fishing tackle. Contains no vegetable oil. Will not gum, turn rancid or clog.

SPOT REMOVER

KF Spot Remover with brush applicator top is an excellent dry cleaner for all automobile and household fabrics. Non-Inflammable.

RADIATOR FLUSH

Loosens and removes rust and scale and dissolves grease and sludge present in cooling system of automobile as car is driven. These substances cause overheating and must be removed to obtain full motor efficiency. Use twice a year—before adding anti-freeze and after it is removed.

PERFECT SEAL GASKET PASTE

KF Perfect Seal Gasket Paste is non-corrosive, non-soluble, never hardens, dries or runs out, permits expansion or contraction of sealed joints without breaking the seal.

FABRIC CLEANER

The ideal cleaner for cars, home and office. Equally effective on upholstery, draperies, rugs, clothing and light fabrics. Quickly and easily removes grease and oil stains, chewing gum and fresh paint. Excellent for removing tar and road oil from painted surfaces.

Announcing

THE NEW
1951



KAISER

BACK-UP LIGHTS

PART NO. 100221



Back-up lights installed in the rear fenders below the tail lamps match the parking lamps.

Provide ample illumination for backing out of dark driveways with safety.

Wiring Harness Kits include all parts for single or dual installation with standard or Hydra-Matic Transmission.

KAISER-FRAZER SALES CORPORATION

KAISER-FRAZER CORPORATION

Willow-Run, Michigan, U.S.A.