

GM

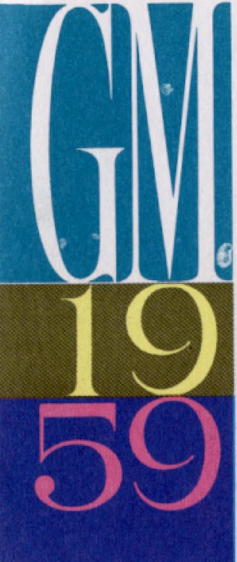
10

59

THE GENERAL MOTORS CARS FOR FIFTY-NINE

It gives us a great deal of pleasure to send you, as a shareholder of General Motors, this booklet on the GM cars for 1959. We are confident that these are the finest automobiles we have ever produced; that each will be a leader in its own field.

Never before in the history of General Motors have all five of our cars been completely new in the same year. There is new body design across the board, with many advancements in comfort, performance, safety and driving ease. Quality and workmanship are outstanding.



John F. London

PRESIDENT

On the following pages you will find much basic information about all of General Motors' new cars. We are also enclosing a folder listing the manufacturer's suggested retail price of the cars and optional equipment.

We know you will share our pride in these outstanding new products, and, if you are thinking of buying a new car, you will want to give them first consideration. Remember, GM is your company—when you buy your company's products, you help insure your company's success.

J. E. Donner

CHAIRMAN

YOU **GET MORE** IN A **GM** CAR

Yes, you Get More in a GM car because GM Gives More. More in comfort, in performance, in safety, in styling, in driving ease. Behind every GM car are the imagination, the forward thinking of some 5,000 scientists, engineers, stylists and supporting personnel at the GM Technical Center. Here, important technical discoveries are nurtured and tested, providing the foundation upon which division engineers build new mechanical features—automatic transmissions, high-compression engines, air suspension, etc. Here, too, the form of each new General Motors car is born in clay, plastic and glass fiber. That's why we say, every buyer of a GM car gets more because GM Gives More—through research, engineering and styling.

GM

RESEARCH

ENGINEERING

STYLING

GIVE MORE

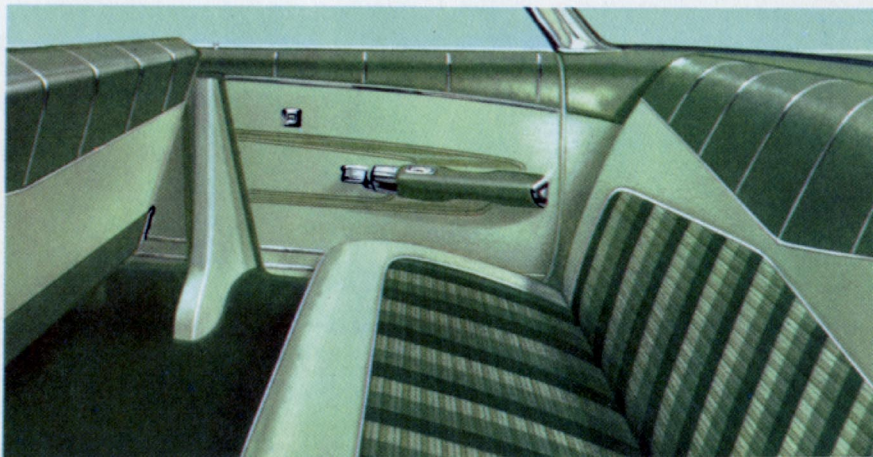


IMPALA SPORT SEDAN in Aspen Green



CHEVROLET '59

Chevrolet for '59 is all new all over again! *Functionally wider in body* for more room and added comfort. *Lower*, but with more head room in some models, and with greater entrance room, greater visibility area (by up to 50%) in all. *A fresh and airy look*—with new windshields that rake back, curving into the slim roofs. New distinction at the front and a fresh new design flare going away. *Beautiful new Magic-Mirror acrylic finishes*—longer lasting, more durable. *Greater luggage storage* with more useable space. *Surer on the road*—with new advances in handling, steering and braking. Extra-value, super-tough *Tyrex Cord Tires* ride softer, run cooler, last longer! A fresh and original car, beautiful to behold and practical too!



BODY STYLES
BODY DIMENSIONS

	Sedans				Station Wagons		Wheelbase	Over-all Length	Width
	2 Dr.	4 Dr.	2 Dr.	4 Dr.	2 Dr.	4 Dr.			
BISCAYNE	●● ^①	●					● ^④	● ^⑤	119" 210.9" 79.9"
BEL AIR	●	●					● ^⑥	● ^⑦	119" 210.9" 79.9"
IMPALA			●	● ^③	● ^③	●		● ^⑧	119" 210.9" 79.9"
CORVETTE						●			102" 177.2" 72.8"

- ① Utility 2-Door Sedan ② Sport Coupe ③ Sport Sedan
 ④ ⑤ Brookwood Station Wagons, 6-pass.
 ⑥ Parkwood Station Wagon, 6-pass.
 ⑦ Kingswood Station Wagon, 9-pass.
 ⑧ Nomad Station Wagon, 6-pass.

BODY FEATURES . . . STRUCTURE—All-welded Fisher Unisteel construction, sealed and insulated, 12-point mounting. **EXTERIOR**—13 colors in Magic-Mirror acrylic lacquers. Horizontal headlights, directional signals, high-level air intake, concealed fuel filler. Safety Plate Glass in all windows. **APPOINTMENTS**—Single-key locks, push-button door handles, crank-operated front vent windows, electric windshield wipers. **INTERIOR**—Foot-lever parking brake. Luxurious combinations of nylon-faced fabrics and leather-grain vinyl. Vinyl side panels. Vinyl or cloth headlining. Two-spoke 17-inch recessed hub steering wheel.

CHASSIS FEATURES . . . SAFETY-GIRDER FRAME—Low, rigid tunnel-center X-frame. **FULL-COIL SUSPENSION** with double-acting shock absorbers and built-in levelizing control, front and rear. Independent front suspension with spherical joints. Four-link rear suspension with four rugged rubber-bushed control arms. **REAR AXLE**—Hypoid, semi-floating—four ratios tailored to power team. **STEERING**—Forward mounted Ball-Race gear, balanced relay linkage. Self-energizing **SAFETY-MASTER BRAKES**—Bonded linings (199.5 sq. in. area).

ENGINE FEATURES . . . Valve-in-head design, aluminum pistons, forged steel crankshaft, replaceable-insert engine bearings, full-pressure lubrication, harmonic balancer, 12-volt electrical system, positive-shift starter, automatic choke, 3-point mounting. V-8s feature independent valve operating mechanism, integral valve guides, chain-driven camshaft, replaceable-element air cleaner, full-flow oil filter.

TRANSMISSION FEATURES . . . TRIPLE-TURBINE TURBOGLIDE—Five-element torque converter with dual-pitch stator controlled by accelerator pedal. Single forward Drive range. Grade Retarder and positive parking lock. POWERGLIDE—Three-element torque converter with automatically controlled planetary gears in Drive range. Manually selected low and reverse. Positive parking lock. CLOSE-RATIO 4-SPEED SYNCHRO-MESH—High-performance design, all forward speeds fully synchronized. Central floor-mounted short-stroke shift lever. OVERDRIVE—Three-speed Synchro-Mesh plus 2-speed planetary overdrive, engaged semi-automatically above 30 mph. Downshift to direct drive by flooring accelerator. STANDARD 3-SPEED SYNCHRO-MESH—All helical gear, Synchro-Mesh design with high torque capacity.

		ENGINES			TRANSMISSIONS				
		Horsepower	Carburetion	Displacement Cu. In.	Compression Ratio	Synchro-Mesh	Overdrive	Powerglide	Turboglide
Available on		Name			Standard 3-Speed	Close-Ratio 4-Speed			
PASSENGER CARS AND STATION WAGONS	Hi-Thrift 6 ^①	135	1 bbl.	235.5	8.25:1	X		0	0
	Turbo-Fire V8 ^②	185	2 bbl.	283	8.5:1	X		0	0
	Super Turbo-Fire V8	230	4 bbl.	283	9.5:1	X		0	0
	Ramjet Fuel Injection V8 A,B	250	—	283	9.5:1	X	0		0
	Turbo-Thrust V8 A	250	4 bbl.	348	9.5:1	X	0		0
	Super Turbo-Thrust V8 A	280	3-2 bbl.	348	9.5:1	X	0		0
CORVETTE	230-hp Corvette V8 ^③	230	4 bbl.	283	9.5:1	X	0		0
	245-hp Corvette V8 A	245	2-4 bbl.	283	9.5:1	X	0		0
	250-hp Corvette V8 A	250	—	283	9.5:1	X	0		0

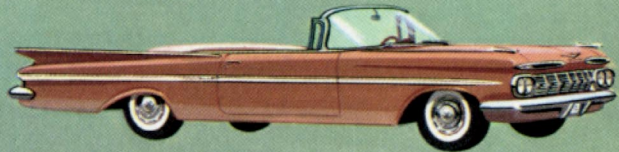
- ① Standard on 6-cylinder models
 ② Standard on V8 models
 ③ Standard on Corvette

All other engines optional at extra charge.

A—Also available at higher horsepower (up to 315) with special camshaft, higher compression ratios (up to 11:1) and other features. Available only with Synchro-Mesh transmission.

B—Not available with Air Suspension or Air Conditioning

X—Standard equipment
 O—Optional at extra cost



IMPALA CONVERTIBLE in Gothic Gold

IMPALA—With full-length side moldings and contrasting color-insert, sports-car-styled steering wheel, striped fabrics, foam rubber in all seats. **BEL AIR**—With full-length white-insert side moldings, two-spoke steering wheel with half-circle horn ring, foam rubber front seats. **BISCAYNE**—With anodized aluminum

PARKWOOD STATION WAGON in Highland Green



BISCAYNE 2-DOOR SEDAN in Crown Sapphire

side moldings, rubber floor mats, vinyl and cloth trim. **STATION WAGONS**—All with roll-down rear windows, power-option on some. **OPTIONS AND ACCESSORIES** at extra cost include: Power Assists—brakes, steering, windows, seats; Air Conditioning; Level Air Suspension; Positraction Rear Axle; Radios; Heaters.

CORVETTE in Roman Red



4 **SERIES**

15 **MODELS**

YOU **GET MORE** IN COMFORT

Comfort in every GM car starts with its Body by Fisher. GM engineered seats: shaped and constructed for proper back support; sprung and cushioned for sofa-like comfort. Power seat adjustment for tall and short people. Spaciously dimensioned interiors with more leg room, hip room and entrance room. Easier to see out: with greater glass area for greater visibility; improved upward vision with Vista-Panoramic Windshields; protection against glare with E-Z Eye Glass and tilting glare-proof rearview mirrors. Body coating, padding and rubber mountings insulate against noise. Greater comfort under all

weather conditions, starting with cowl-high air intakes for clean air and crank-operated front vent windows for positive, draft-free ventilation. Thermostatically-controlled heaters with defrosters and two-speed fans. Air conditioning installed under the hood or under the dash. Outstanding suspension systems that better absorb road shocks and vibrations. Air suspension provides definite proof of GM leadership in suspension design. Developed by the General Motors Engineering Staff, air suspension improves the ride, lessens noise and driver fatigue and automatically maintains the normal level of the car.

GM

RESEARCH

ENGINEERING

STYLING

GIVE MORE

BONNEVILLE VISTA in Sunset Glow and Cameo Ivory



PONTIAC '59

All the best of all that's new all in one car—that's Pontiac! *Wide-Track Wheels*—the widest tread in America, to give you solid footing and unsurpassed road-hugging ability. *Air-Cooled True-Contour Brakes* for precise, unvarying control stop after stop. *Vista-Lounge interiors* with seats wider than sofas. *All-around visibility* with Vista-Panoramic Windshield and glass area increased as much as 37%. Pontiac's *most advanced V-8 engines* yet, the vibration-free Tempest 420 and the no-extra-cost optional Tempest 420-E—an amazingly economical new V-8 that gives greatly improved mileage. *Smart new styling*—a look that's new and low. All of these and more wonderful things have happened to America's No. 1 Road Car . . . Pontiac!



BODY STYLES
BODY DIMENSIONS

Series	Sedans		Hardtops		Convertibles		Station Wagons		Wheelbase	Over-all Length	Width
	2 Dr. ①	4 Dr.	2 Dr. ②	4 Dr. ③	2 Dr. ④	4 Dr.	4 Dr.				
CATALINA	●	●	●	●	●	●	●	●	122"	213.7" ⑧	80.7"
STAR CHIEF	●	●		●	●	●			124"	220.7"	80.7"
BONNEVILLE				●	●	●		● ⑤	124" ⑦	220.7" ⑧	80.7"

① Sports Sedan

② Sports Coupe

③ Vista

④ Two-seat 6-passenger Safari

⑤ Three-seat 9-passenger Safari

⑥ Two-seat 6-passenger Custom Safari

⑦ Station wagon—122"

⑧ Station wagon—214.3"

BODY FEATURES . . . STRUCTURE — All-steel Body by Fisher. Body steel reinforced, top and bottom and at all four sides. Reinforced super side rail rocker panel. Counter-balanced, self-locking trunk lid. Counter-balanced, sound-deadened double construction hood. **EXTERIOR**—57 color combinations in durable Magic-Mirror acrylic lacquer. "Free-wheeling" door handles on all rear doors when locked. Safety plate glass all around. **APPOINTMENTS**—Crank-operated front vent windows. Same key for ignition and door locks. Different key for trunk lock. Electric windshield wipers. **INTERIOR**—Automatic interior lighting, door operated. Dual arm rests, front and rear. Instrument panels custom styled for each series. Tell-tale oil and water temperature indicators. 48 colorful combinations of patterned cloth and coated fabric trim.

CHASSIS FEATURES . . . FRAME — Rugged X-member frame. Box section with four cross members. Wider tread for better stability, less car roll. **SUSPENSION** —Independent action wide diameter front coil springs. Compound angled suspension control arms and connecting links. Torsion action front stabilizer bar. Angle-mounted hydraulic shock absorbers, front and rear. Rear springs—wide diameter, deep travel coil springs. Pivoted control

arms. REAR AXLE—Hypoid rear axle. STEERING—Recirculating ball steering gear. BRAKES—Multiple-sealed 11-inch front and rear brakes. Foot-operated parking brake.

ENGINE FEATURES . . . Efficient low friction, short stroke V-8 design. Overhead hydraulic valve system with aluminized valves. Alloy cast-iron block. Overlapped journal design. Five main bearings. Tin-plated aluminum pistons. Engine cushioned by three-point center of percussion mounts. Pressure suction crankcase ventilation. Harmonic balancer vibration dampening. Full-pressure Quad-gallery Lubricating System. Reverse-flow gusher valve cooling. Intake valves vented to atmosphere. Balanced intake manifold with pre-heat chamber. Automatic choke. 12-volt electrical system.

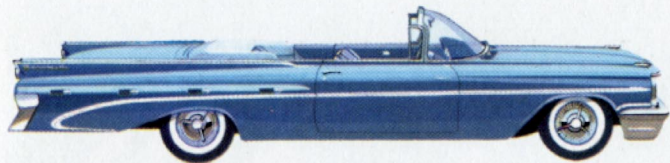
TRANSMISSION FEATURES . . . STANDARD SYNCHRO-MESH—3 speeds and reverse with quiet helical gears throughout. New high-capacity centrifugally engaged clutch. HYDRA-MATIC—Fluid coupling with planetary gears. 4 speeds with 3 forward driving ranges. Forced downshift through acceleration pedal up to 65 mph. Parking lock.

Available on	ENGINES			TRANSMISSIONS		
	Horsepower	Carburetion	Displacement Cu. In.	Compression Ratio	Synchro-Mesh	Super Hydra-Matic
CATALINA and STAR CHIEF	245 ^①		2 bbl.	389	8.6:1	X
	280		2 bbl.	389	10:1	
	300 ^②		4 bbl.	389	10:1	0
BONNEVILLE	260 ^③		4 bbl.	389	8.6:1	X
	300		4 bbl.	389	10:1	0
ALL MODELS	215 ^{①③}		2 bbl.	389	8.6:1	
	315 ^②		3-2 bbl.	389	10.5:1	X

- ① Engine optional at no extra cost—with Super Hydra-Matic transmission only
- ② Optional at extra cost
- ③ Designed to operate on regular fuel

X—Standard Equipment
O—Optional at extra cost

Optional accessories and equipment at extra cost, include: Power Assists—steering, brakes, windows, seats (6-way); Power Antenna; Air Suspension; Radio; Heater and Defroster; Air Conditioning.

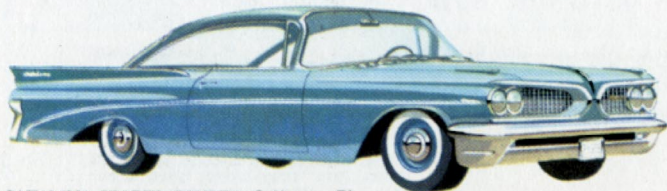


BONNEVILLE CONVERTIBLE in Concord Blue

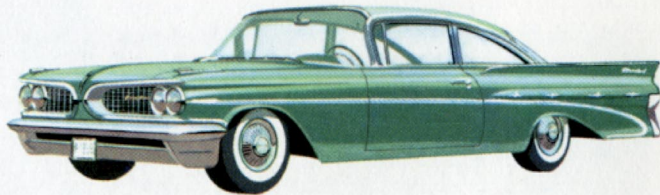
3

SERIES

BONNEVILLE—With padded hand-rail assist bar, aluminum seat-end and side panels, special noise-deadening insulation. **STAR CHIEF**—With special coated fabric interiors, deluxe steering wheel, distinctive instrument



CATALINA SPORTS COUPE in Gulfstream Blue



STAR CHIEF SPORTS SEDAN in Jademist and Seaspray Green

14

MODELS

panel design and wheel discs. **CATALINA**—Greatest selectivity with 7 models, 11 exterior colors, and 5 cloth and coated fabric interiors. **SAFARIS**—All have roll-down rear windows, with power standard on 3-seat Safari.



THREE-SEAT CATALINA SAFARI in Canyon Copper

YOU GET MORE IN PERFORMANCE

Performance in every GM car starts with its high-compression engine—available now with compression ratios as high as 11 to 1! The scientific principle of high compression—burning fuel and air under greatly increased pressures—was applied successfully to automotive engines by GM Research Laboratory in 1947 and first introduced in a GM passenger car in 1949. Today every GM car is powered by improved versions of such an engine—noted for their compactness, their smoothness, their responsiveness, their quietness, their efficiency, their dependability! These power packages incorporate many other scientific and engineering features, the direct result of continuing research and development work. Squeezing more power out of every gallon of fuel in specially shaped combustion chambers Running on

bearings so highly developed that they last the life of the car Built of research-developed materials that slow engine wear, reduce oil consumption With rotating parts dynamically balanced on special General Motors-designed machines for vibration-free operation Developing more useful power through improved breathing and timing, to provide rapid acceleration for agile movement.

Also contributing to the outstanding performance of General Motors cars is the widest selection of transmissions in the industry, including several hand-shift transmissions and many automatics. Transmissions to adapt the engine to varying road and driver requirements; transmissions to provide the best in performance, convenience and economy.

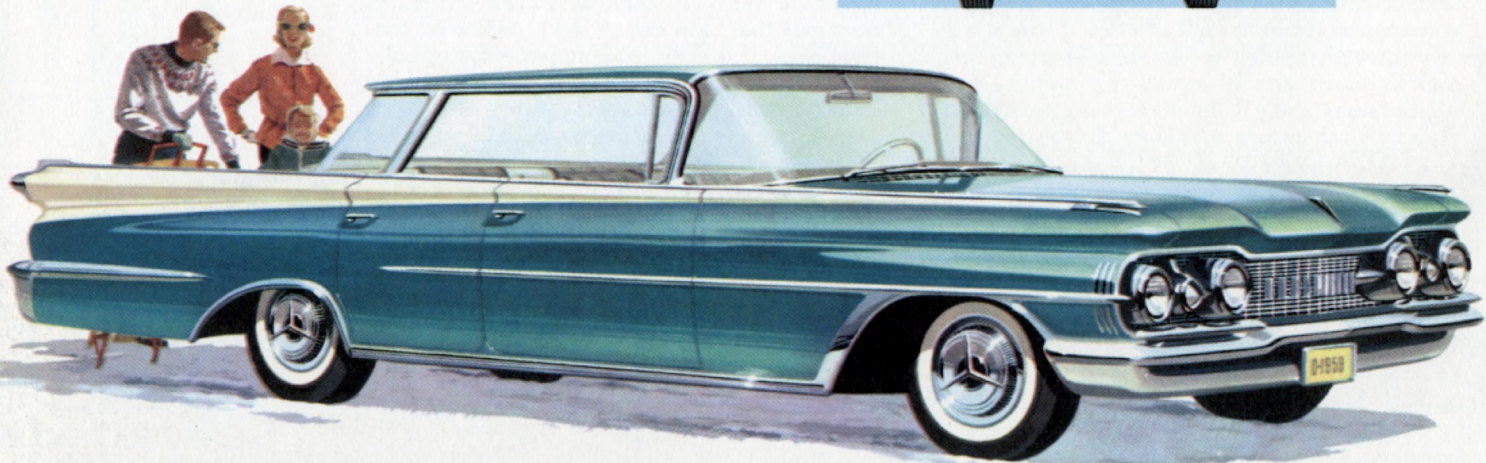
GM

RESEARCH

ENGINEERING

STYLING

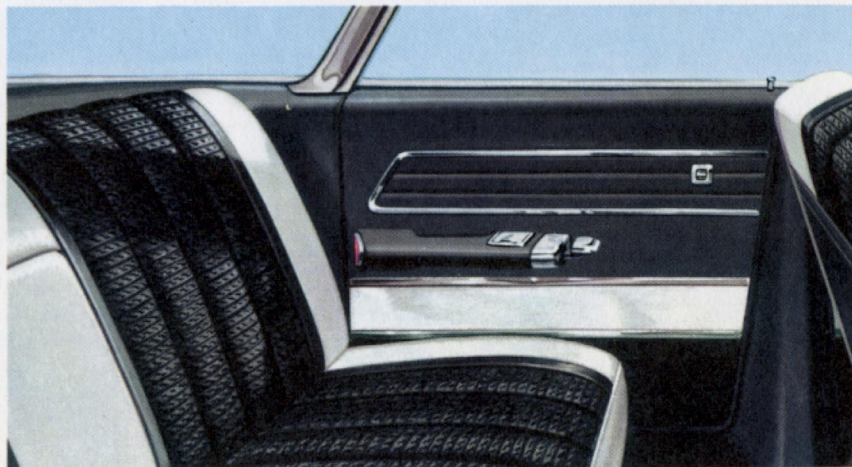
GIVE MORE



NINETY-EIGHT HOLIDAY SPORTSEDAN in Aqua Mist and Polaris White

OLDSMOBILE '59

In Olds for '59—it's the *inside story of wide open spaces*. There's more leg room, more hip room in every spacious model. The tremendous increase in glass all around enhances the airy feeling, gives a new outlook! Olds' "*Linear Look*" with its slim, trim lines heralds the start of a new styling cycle. *Wide-Stance Chassis* with wider, stronger Guard-Beam Frame, wider tread and improved suspension gives a more solid "Glide" ride. *Air-Scoop Brakes* on all four wheels dissipate heat faster, run cooler, last longer. The bigger, more rigid '59 *Rocket Engine* is quieter, smoother, more powerful. New *Roto-Matic Power Steering*—responds better, takes less effort. *Wider, deeper trunk* stores up to 64% more. A car totally new in design . . . yet typically Olds in good taste, in good craftsmanship.



BODY STYLES		BODY DIMENSIONS								
Sedans	Hardtops	Convertibles		Station Wagons ^①		Wheelbase	Over-all Length	Width		
		2 Dr.	4 Dr.	2 Dr. ^②	4 Dr. ^②				4 Dr.	
DYNAMIC 88		●	●	●	●	●	●	123."	218.4"	80.8"
SUPER 88			●	●	●	●	●	123."	218.4"	80.8"
NINETY-EIGHT			●	●	●	●		126.3"	223.0"	80.8"

- ① Holiday SceniCoupe
 ② Holiday SportSedan
 ③ Fiesta

BODY FEATURES . . . STRUCTURE—All-welded, high quality Body by Fisher. New extra-heavy molded rubber body mounts. **EXTERIOR**—Safety plate glass all around. 15 Magic-Mirror colors of acrylic base lacquers. **APPOINTMENTS**—Electrically-operated windshield wipers. Crank-operated front vent windows. **INTERIOR**—Twin-contour instrument panel with dual, lighted ash receivers. Safety-Spectrum speedometer—color bar replaces needle: 0-35 mph, bar remains green; 35-65, orange; 65 and over, red. Ruggedly constructed Fashion-Firm and Custom-Lounge seats. Beautiful fabrics and colorful trim combinations.

CHASSIS FEATURES . . . GUARD-BEAM FRAME—Combines U-channel and box-member side rails, with huge center X-member. **FRONT SUSPENSION**—Pivot-Poise with Counter Dive; independent coil springs; direct-acting shock absorbers; stabilizer bar. **REAR SUSPENSION**—Leaf spring with outboard mounted, direct-acting shock absorbers. **AIR-SCOOP BRAKES**—Super Hydraulic; 191.7 sq. in. lining area; Air Scoop heat dissipating flange. **REAR AXLE**—Semi-floating with hypoid gears. **STEERING**—Dual center-control, recirculating ball-nut gear.

ENGINE FEATURES . . . High compression, short stroke 90° V8 design. Rigid engine block with longer cylinders for greater piston support. Replaceable main insert bearings. Auto-Thermic aluminum pistons. Free-Flow intake manifold design. Overhead valves with hydraulic lifters and conical valve springs. Full-pressure lubrication. 12-volt electrical system.

TRANSMISSION FEATURES . . . JETAWAY HYDRA-MATIC DRIVE—Two planetary gear sets, two fluid couplings and improved clutches. Four forward speeds, three driving ranges. Part-throttle downshift at speeds up to 30 mph, full-throttle downshift at speeds up to 65 mph. Parking lock. SYNCRO-MESH—Standard 3-speed and reverse, all helical gears.

* Other optional accessories and equipment are available at extra cost including: Anti-Spin Rear Axle, Trans-Portable, DeLuxe and Super DeLuxe Radios, Air Conditioning, Dual-Range Power Heater, etc.

ROCKET ENGINES	TRANSMISSIONS AND POWER ASSISTS*												
	Horsepower	Carburetion	Displacement	Compression Ratio	Synco-Mesh	Jetaway Hydra-Matic	Power Steering	Power Brakes	Power Seats	Power Windows ^②	Power Ventipanes	Power Radio Antenna	
			Cu. In.							Two Way	Six Way		
DYNAMIC 88	270 ^①	2 bbl.	371	9.75:1	X	0	0	0	NA	0	0	NA	0
SUPER 88	315	4 bbl.	394	9.75:1	X	0	0	0	NA	0	0	0	0
NINETY-EIGHT	315	4 bbl.	394	9.75:1		X	X	X	X ^③	0	X ^④	0	0

- ① 300 hp, 4 bbl. Rocket engine available at extra cost.
- ② Power-operated rear window available on Fiesta model.
- ③ Standard on all Ninety-Eight models except 4-Dr. Sedan.
- ④ Optional on Ninety-Eight 4-Door Sedan.

X—Standard equipment
 0—Optional at extra cost
 NA—Not Available

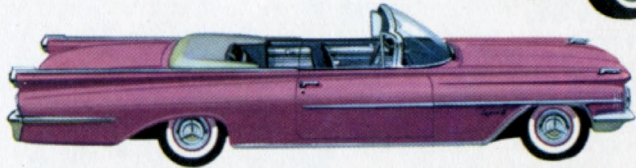
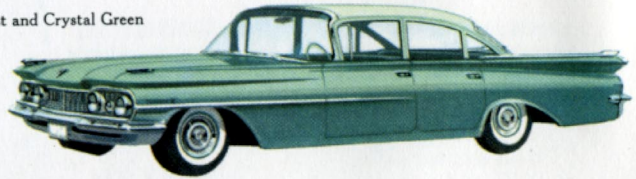
OLDSMOBILE '59

3 SERIES

NINETY-EIGHT—With roomy, luxurious interiors, many power assists and Jetaway Hydra-Matic Drive as standard equipment. **SUPER 88**—With deep-twist carpeting, glamorous interiors and the Power-Famous 315 hp Rocket Engine. **DYNAMIC 88**—With Fashion-Firm seats, increased passenger room and luggage space, and the 270 hp Rocket Engine with improved Econ-O-Way Carburetor.

15 MODELS

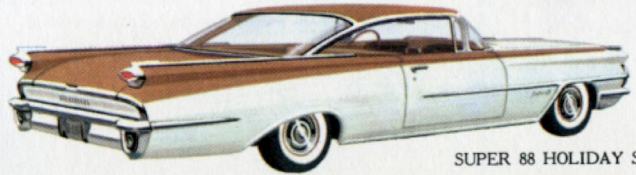
DYNAMIC 88 4-DOOR SEDAN in Emerald Mist and Crystal Green



SUPER 88 CONVERTIBLE COUPE in Burgundy Mist



DYNAMIC 88 FIESTA STATION WAGON in Russet



SUPER 88 HOLIDAY SCENICOUPE in Bronze Mist and Polaris White

YOU GET MORE IN SAFETY

GM cars are made with safety in mind . . . packed with features designed to make driving safer. Features which leave you free to concentrate on driving: adjustable seats to locate you properly behind the wheel within reach of conveniently arranged controls and instruments; power-assisted steering and brakes to give you better control of car direction and speed; and directional signals for easier, safer signaling of turns. Features to improve your seeing ability when driving: greater glass area with freedom from distortion for better viewing all around; improved four-lamp lighting system with GM Safety-Aiming to assure proper beam direction; rapid defrosting and defogging of windshield; foot-operated and Autronic-Eye control of headlight dimmers for better, safer night driving. Better vision for the driver follow-

ing GM cars too, because he can see clearly through the wide, distortion-free rear window and windshield. Engines and transmissions with plenty of reserve power—for safety in passing slow-moving vehicles, in crossing busy intersections and on hills. Tires with built-in skid protection and resistance to blowout. Features to help protect you from harm in the event of accident: reinforced bodies on low, wide chassis—low enough to provide improved stability, rigid enough to resist roof collapse in the event of roll over and with impact absorbing front and rear ends; shatter-proof safety plate glass in all windows and padded instrument panels. Engineered for maximum roadability, for safe, sure braking and for stability on curves, GM cars are exhaustively safety-tested at the GM Proving Grounds.

GM

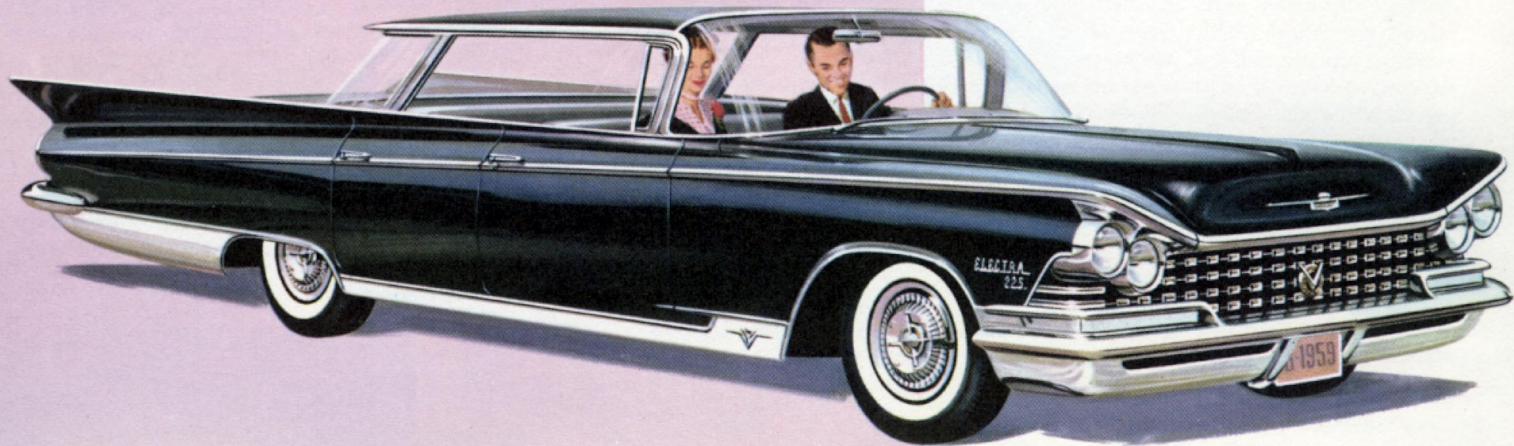
RESEARCH

ENGINEERING

STYLING

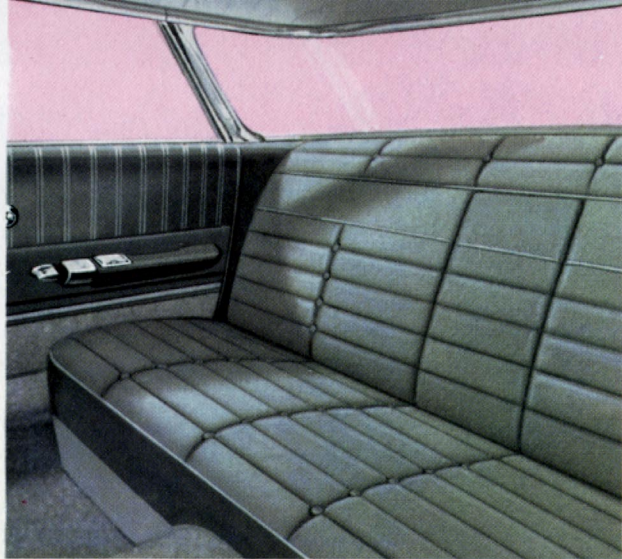
GIVE MORE

ELECTRA 225 4-DOOR HARDTOP in Sable Black



BUICK '59

Buick's so new . . . even the names had to be new! Thrifty *LeSabre*, spirited *Invicta* and luxurious *Electra!* *Wildcat* and *Wildcat 445* engines, with high-performance in the middle-range speeds and high economy. *New Triple Turbine* and *Twin Turbine* Transmissions—with flow-and-go smoothness. Balanced design in the *Equipoise Chassis*—full coil-spring suspension with greater clearance, better shock absorber control or new Buick Air Ride option—rear wheel air suspension with coil springs in front. *New style* in Buick's gleaming body with Vista-Panoramic Windshield, diamond pattern grille, rakish delta-wing fenders. New and wonderful from road to roof . . . this is the first of a new generation of great new Buicks.



BODY STYLES			BODY DIMENSIONS						
Series	Sedans	Hardtops	Convertibles	Station Wagons ^①	Wheelbase	Over-all Length	Width		
	2 Dr.	4 Dr.	2 Dr.	4 Dr.	4 Dr.				
LE SABRE	●	●	●	●	●	● ^④	123. "	217.4"	80.7"
INVICTA		●	●	●	●	● ^④	123. "	217.4"	80.7"
ELECTRA		●● ^①	●	●● ^②	● ^③		126.3"	220.6" ^⑤	80.7"

- ① Electra 225 4-Door Riviera Sedan
- ② Electra 225
- ③ Estate Wagon

- ④ 6-passenger with 2 seats; Optional Junior Seat also available
- ⑤ Electra 225 Models—225.4 in. on 4-Door Hardtop and 4-Door Riviera Sedan

BODY FEATURES . . . STRUCTURE—Body by Fisher, all-welded, sealed and insulated. **EXTERIOR**—13 Magic-Mirror finishes; all two-tone combinations to have Arctic White upper. Safety plate glass in all windows. Estate wagons have roll-down rear windows. **APPOINTMENTS**—Crank-operated front vent windows. Cigarette lighter, dual adjustable sun visors and automatic dome light, front-and-rear ash trays. Electric windshield wipers. Push-button door handles and locks. **INTERIOR**—Barbary cloth, Balfour cloth, nylon Mojave, broadcloth, Saran Balfour, Cordaveen, and leather interior trim in 45 fashion-styled interior combinations.

CHASSIS FEATURES . . . FRAME—Boxed side rails with "K" type cross-member. **SUSPENSION**—Front: coil springs and ball joint with double-acting shock absorbers. Rear: coil springs standard with tubular steel track bar mounted in rubber, double-acting shock absorbers. **REAR AXLE**—Buick Torque-Tube Drive, semi-floating rear axle with hypoid gears. **STEERING**—Ball bearing worm and nut. **BRAKES**—Air-cooled aluminum brake drums, front; fin-cast iron brake drums, rear. 12.015" diameter. Full-size 15-inch wheels.

ENGINE FEATURES . . . Valve-in-head 90 degree V8. Aluminum alloy pistons—cam ground, traverse slot. Hydraulic valve lifters. Moraine 400 main insert type bearings. Steel-backed aluminum connecting rod bearings. Aluminum element air cleaner. 12-volt electrical system. Neoprene boot protected spark plugs. Full-flow oil filter and pressure lubrication to main, connecting rod and camshaft bearings.

TRANSMISSION FEATURES . . . TRIPLE TURBINE—5-element torque converter. Three turbines. Infinite-pitch stator controlled by accelerator and two fixed vane stators. Grade retarder. Parking lock. TWIN TURBINE—5-element torque converter. Two turbines. Dual-pitch stator and fixed vane stator. Parking lock. SYNCHRO-MESH—Standard, 3-speeds and reverse, all helical gear. Single dry plate clutch with coil springs.

Other optional accessories and equipment available include: Heater and Defroster, Air Conditioning, Choice of Radios, Electric Antenna, Autronic-Eye, Positive-Traction Differential, Air Ride.

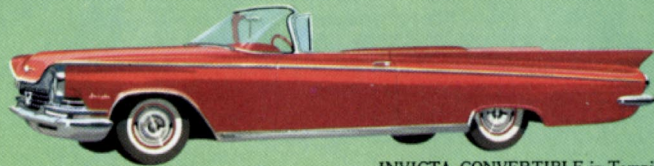
ENGINES				TRANSMISSIONS AND POWER ASSISTS*								
Name	Horsepower	Carburetion	Compression Ratio	Displacement Cu. In.	Twin Turbine	Triple Turbine	Power Steering	Power Brakes	Power Seats 6-way	Power Windows ^②	Power Vent Windows	
Series												
LE SABRE	Wildcat	250 _x	2 bbl.	10.5:1	364	0 ^①	0					
		300 ₀	4 bbl.	10.5:1	364	0	0	0	0	0 ^③	0 ^③	NA
INVICTA	Wildcat					X	0	0	0	0	0	NA
	445	325	4 bbl.	10.5:1	401							
ELECTRA						X	0	X	X	0	0 ^④	0

- ① Synchro-Mesh transmission standard with 8.5:1 compression ratio engine.
- ② Power tailgate window optional on all estate wagons
- ③ Not available on 2-dr. sedan
- ④ Standard on convertible

X—Standard equipment
 0—Optional at extra cost
 NA—Not available



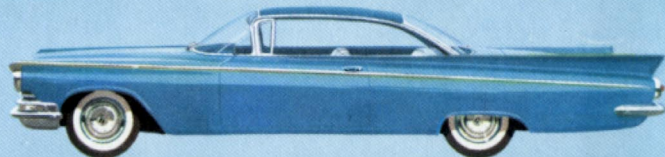
INVICTA 4-DOOR ESTATE WAGON in Copper Glow



INVICTA CONVERTIBLE in Tampico Red

3 SERIES **17** MODELS

ELECTRA—Nylon Mojave and wool broadcloth interiors, many power assists, dual-speed electric wipers, instrument panel safety pad and pull-down rear arm rest. **INVICTA**—Balfour cloth with Cordaveen accents, instrument panel safety pad, dual-speed electric windshield wipers, Wildcat 445 engine and Twin Turbine transmission. **LE SABRE**—Economical performance with Wildcat engine. Barbary cloth with Cordaveen accents.



LE SABRE 2-DOOR HARDTOP in Turquoise



ELECTRA 4-DOOR SEDAN in Glacier Green

YOU GET MORE IN STYLING

General Motors cars are styled to make you want to own one, styled to make you proud you own one! Beauty and function go hand in hand as GM stylists seek a design that is more desirable and at the same time more useful, more convenient and more pleasant to use.

This philosophy finds application in many areas. In GM windshields and rear windows—big and distinctive in appearance, but with limited curvatures to control distortion. In sedans—stylishly low, but with generous shoulder room, head room and leg room. In entrance room—doors wide enough and seat edges close enough to the side of the body for easy access. In window openings—located at a convenient height to rest the arms. In upper fender surfaces—high enough to be conveniently seen by the driver and used

for gauging car position. In tail lamps—high and at the edge of the car for maximum visibility. In roofs and pillars—slim enough for minimum interference with seeing ability. In wrap-around bumpers—to afford protection for the side body. In body moldings—located for protection against paint chipping. In window moldings and other surfaces likely to rust—rust-resistant bright metal is used. In rear decks—long with plenty of room inside for additional storage space. In interiors—easy-to-care-for and long wearing trim materials and fabrics. In instruments—recessed and shaded for better seeing. In instrument panel top surfaces—shaped to reduce glare. These and many other features of General Motors cars are tastefully and thoughtfully designed with your driving pleasure in mind.

GM

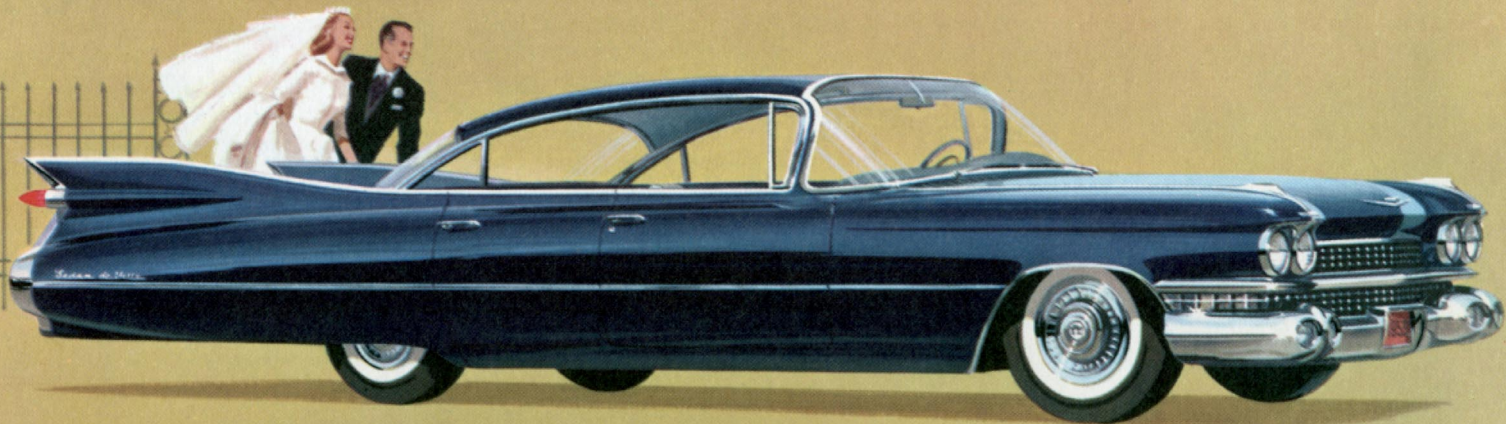
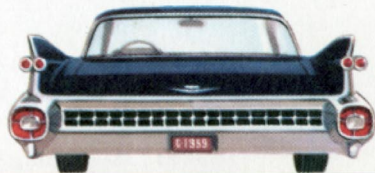
RESEARCH

ENGINEERING

STYLING

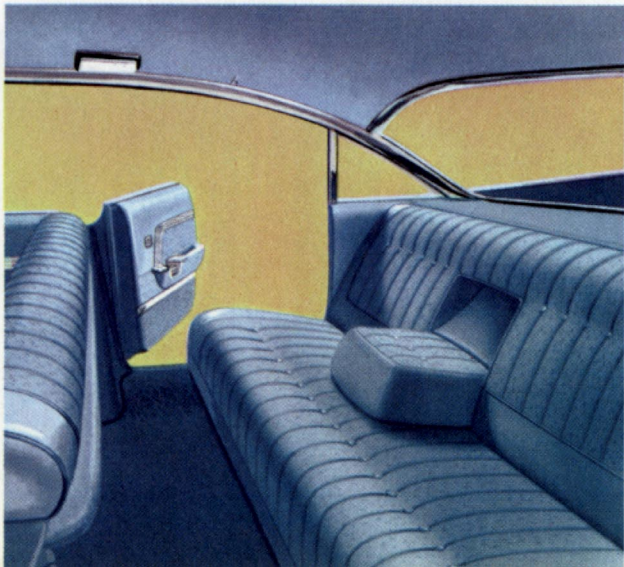
GIVE MORE

THE SEDAN DE VILLE in Metallic Blue



CADILLAC '59

Cadillac for 1959 introduces a new realm of motoring majesty. New in the way it looks . . . with a windshield affording greater visibility than ever before, dazzling new grille ensemble, dramatic new roof lines and sweeping rear fins. New in the way it rides and drives . . . with Cadillac's superlative seats, faultless 4-point coil or air suspension, revolutionary new shock absorbers, many power-assist features. New in the owner satisfaction it will render . . . born of its exquisite quality and craftsmanship, of gorgeous interiors that are inspiring to behold, and of the newest advancements in driving pleasure. There's wonderful and exciting news in Cadillac for 1959 . . . progress that makes this a proud and logical successor to illustrious Cadillac creations of the past 57 years.



	BODY STYLES			BODY DIMENSIONS				
	Hardtops		Convertibles	Limousine 9-Pass.	Sedan 9-Pass.	Wheelbase	Over-all Length	Width
	2 Dr.	4 Dr.						
SIXTY-TWO	●	● ^① ● ^②	●			130"	225"	80.2"
COUPE DE VILLE & SEDAN DE VILLE	● ^③	● ^④ ● ^⑤				130"	225"	80.2"
SIXTY SPECIAL		●				130"	225"	81.1"
ELDORADO BIARRITZ & SEVILLE	●		●			130"	225"	80.2"
ELDORADO BROUGHAM		●				130"	225"	80.2"
SEVENTY-FIVE				●	●	149.8"	244.8"	80.2"

- ① 4-window Sixty-two Sedan ④ 4-window Sedan de Ville
 ② 6-window Sixty-two Sedan ⑤ 6-window Sedan de Ville
 ③ Coupe de Ville

BODY FEATURES . . . STRUCTURE—All-welded Fleetwood Coach-crafted construction. **EXTERIOR**—15 acrylic lacquer finishes plus 5 exclusive Eldorado colors. Safety plate glass in all windows. Back-up lights. **APPOINTMENTS**—Electric windshield wipers and washers, rear center arm rests in closed models, courtesy lights, dual sun visors, visor vanity mirror, electric clock, cigarette lighters and front-and-rear ash trays. **INTERIOR**—Wide variety of elegant selections of world's choicest leathers and fabrics.

CHASSIS FEATURES . . . FRAME—Tubular-center X frame permits lower body. **FRONT SUSPENSION**—Spherical joint with independent, helical-coil type springs. **REAR SUSPENSION**—Four-point. Rear springs are helical-coil type. Freon-bag type hydraulic shock absorbers eliminate aeration of oil and provide full control under all road conditions and temperatures. **REAR AXLE**—Hypoid. Differential housing offset to provide straight-line drive. Four axle ratios available. **STEERING**—New Rotary-Valve Power Steering standard equipment with over-all steering ratio of 18.9 to 1. **BRAKES**—Power Brakes standard. Effective lining area, 210.32 sq. in., 233.72 sq. in. on Series 75 models.

ENGINE FEATURES . . . Eight-cylinder, overhead, 90° V-type. Mounted in rubber at 3 points. Aluminum alloy pistons, slipper type. Recessed contour in piston head increases turbulence, improves burning of fuel-air mixture. Downdraft carburetors with equalized manifolding. Dry-pack type air cleaner. Full-pressure lubrication. 12-volt electrical system.

TRANSMISSION FEATURES . . . HYDRA-MATIC DRIVE —Fully automatic, step-gear type. Controlled fluid coupling on forward gear set for smoother shifts. Provides two drive ranges, Lo and Reverse. Parking lock.

* Other accessories and equipment, either standard or optional at extra cost, are available, including Air Suspension, Air Conditioning, Radio, Heating System, Cruise Control, Autronic-Eye and Fog Lamps.

X—Standard equipment

O—Optional at extra cost

NA—Not available

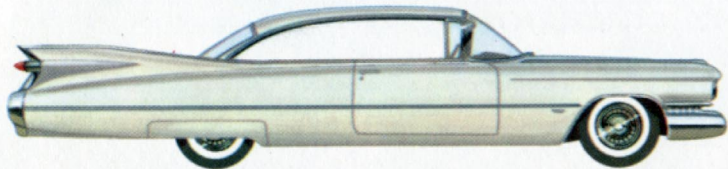
① Standard on convertible

② Power-operated retractable rear window vent standard

③ Displacement—390 cu. in.

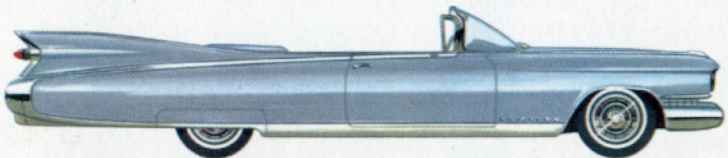
ENGINES ③	TRANSMISSION AND POWER ASSISTS*											
	Horsepower	Carburetion	Compression Ratio	Hydra-Matic	Power Steering	Power Brakes	Power Seats	Power Windows	Power Front Window Vents	Electric Door Locks		
							Two Way	Six Way				
SIXTY-TWO	325	4 bbl.	10.5:1		X	X	X	NA①	O	O①	O	O
COUPE DE VILLE & SEDAN DE VILLE	325	4 bbl.	10.5:1		X	X	X	X	O	X	O	O
SIXTY SPECIAL	325	4 bbl.	10.5:1		X	X	X	X	O	X	X	O
ELDORADO BIARRITZ & SEVILLE	345	3-2 bbl.	10.5:1		X	X	X	NA	X	X	X	X
ELDORADO BROUGHAM	345	3-2 bbl.	10.5:1		X	X	X	NA	X	X	X②	X
SEVENTY-FIVE	325	4 bbl.	10.5:1		X	X	X	X	NA	X	O	NA

THE SIXTY-TWO COUPE in Dover White



Classic achievement in elegance and majesty of styling! THE SIXTY-TWO COUPE, most modestly priced of all Cadillac models, features richly appointed interiors with fine Carlisle or Mojave fabrics in many colors.

Luxurious beyond description, THE ELDORADO BIARRITZ offers interiors of deep-grained Cardiff and Florentine leathers in metallic tones. Spectacular performance with the new 345 horsepower engine.



THE ELDORADO BIARRITZ in Argyle Blue

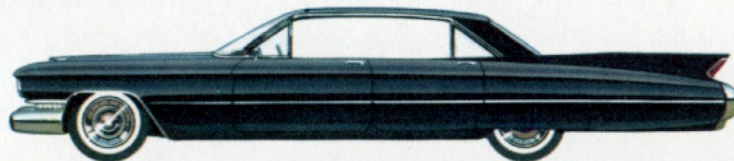
THE FLEETWOOD SIXTY SPECIAL in Kensington Green



Distinctive appearance, fleet beauty of silhouette, elegant simplicity of design make THE FLEETWOOD SIXTY SPECIAL a classic among motorcars. Many fabric and leather upholstery combinations available.

CADILLAC'S supreme achievement, the limited-production ELDORADO BROUGHAM, is custom-designed, custom-built to give every advanced feature of comfort, convenience, luxury, and performance.

13
MODELS



THE ELDORADO BROUGHAM in Ebony Black

YOU **G**ET **M**ORE IN DRIVING EASE AND CONVENIENCE

In GM cars, you get all the conveniences you want and need to make driving easy and pleasant! Simply designed operating controls and easy-to-read instruments within convenient reach of the driver's seat. Automatic transmissions to eliminate gear shifting—just put the selector in drive and touch the accelerator. Power steering to take the work out of parking. Handy foot-applied parking brakes to save reaching. Door handles, window cranks, heater controls, turn signals, windshield washer and wiper controls all within easy reach and easy to operate. Power-operated windows save stretching across the car. Autronic-Eye automatically dips your lights when approaching other cars and raises the beam after passing.

Radios you can operate without taking your eyes off the road, with station selection by push-button, special tuning bar, or foot selector and with power-operated antennas. Speed warning buzzers to remind you when a pre-determined speed is reached. Cruise control (Cadillac) provides automatic accelerator adjustment to maintain preset speeds and give you new freedom of foot. Ash trays, cigarette lighters, arm rests, glove compartments and courtesy lights add a personal touch. Convertible coupes with power-operated fabric tops. Station wagons with roll-down rear windows and fold-away second seats provide more convenient storage space. All these conveniences are available to you in cars made by GM.

GM

RESEARCH

ENGINEERING

STYLING

GIVE MORE

VAUXHALL

British craftsmanship and distinction . . . in Vauxhall Victor. Offered in two models . . . Victor Super 4-door Sedan . . . and the 4-door Victor Estate Wagon. A moderately priced car of medium overall size, yet with a spacious interior. The 92-cubic-inch Vauxhall engine develops 53 horsepower with 6.8 to 1 compression ratio or 55 horsepower with 7.8 to 1 compression ratio. Vauxhall's easy handling and remarkable economy stem from its very advanced design. Check these features: Panoramic windshield, convenience of 4 doors, smart lines, advanced craftsmanship and single unit welded body construction. For practical value Vauxhall is tops. See your Pontiac dealer.



VAUXHALL VICTOR ESTATE WAGON and VAUXHALL VICTOR SUPER

VAUXHALL FEATURES: Heater and defroster, flashing turn signals, 2-speed electric windshield wipers, combined ignition and starter switch, 12-volt electrical system, dual sun visors, swing-type pedals, automatic dome light, adjustable front seat.

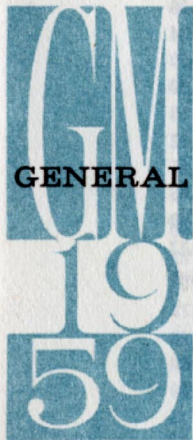
OPEL

Europe's most distinguished economy car. Offered in two body styles . . . the 2-door Olympia Rekord Sedan and the 2-door Caravan Station Wagon. You get the combination of low-cost transportation and good performance from its 56 horsepower engine, with 7.5 to 1 compression ratio and 90.8 cubic-inch displacement. Compact in size and maneuverable with its 100.04-inch wheelbase, yet roomy enough inside for 4-5 passengers and plenty of luggage—up to 65 cubic feet in the Caravan with the rear seat folded. The quality-crafted body is of unitized all-steel construction with Panoramic windshield. See your Buick dealer.



OLYMPIA REKORD and OPEL CARAVAN

OPEL FEATURES: Heater and defroster, flashing turn signals, adjustable front seat, automatic dome light, locking glove compartment, clock, red-line speedometer, dual sun visors, swing-type pedals, positive shaft-driven windshield wipers, crank-operated vent windows, rugged roof luggage rack standard on Caravan Station Wagon.



GENERAL MOTORS 1959 PASSENGER CAR SUGGESTED RETAIL PRICE LIST

CHEVROLET / PONTIAC / OLDSMOBILE / BUICK / CADILLAC / VAUXHALL • OPEL

as you can see it is the only one
 that has a 30 day money back guarantee

...
 ...
 ...
 ...
 ...

	30 Days	60 Days	90 Days	120 Days	150 Days
CONVILLE M					
HAVLY M					
AVLY M					
HT V18 M					
HT V18 S					
HT V18 M					
HT V18 S					
HT V18 M					
HT V18 S					

All prices, specifications etc., are subject to change without notice.

	1270
	1275
	1280
	1285
	1290
	1295
	1300
	1305
	1310
	1315
	1320
	1325
	1330
	1335
	1340
	1345
	1350
	1355
	1360
	1365
	1370
	1375
	1380
	1385
	1390
	1395
	1400

CHEATON

...
 ...
 ...

MANUFACTURER'S SUGGESTED RETAIL PRICES

The passenger car prices in this folder are the manufacturer's suggested retail prices, including reimbursement for Federal Excise tax and suggested dealer delivery and handling charge. These prices do not include destination charges, optional equipment and accessories, and state and local taxes.

Prices listed for principal factory-installed optional equipment or accessories on U. S.-built cars are the manufacturer's suggested retail delivered prices. These prices include reimbursement for Federal Excise tax but do not include state and local taxes, if any. Your local dealer should be consulted for the prices of dealer-installed optional equipment and accessories.

The prices for Vauxhall and Opel cars, manufactured by General Motors subsidiaries in England and West Germany, are F.O.B. New York, N. Y., port of importation.

CHEVROLET

MANUFACTURER'S SUGGESTED RETAIL PRICES

Series	Sedans		Hardtops		Convert-ible	Sports Car	Station Wagons		
	2 Dr.	4 Dr.	2 Dr.	4 Dr.			2 Dr.	4 Dr.	
							6 pass.	6 pass.	9 pass.
BISCAYNE 6	\$2,247*	\$2,301					\$2,571	\$2,638	
BISCAYNE V8	2,365**	2,419					2,689	2,756	
BEL AIR 6	2,386	2,440						2,749	\$2,852
BEL AIR V8	2,504	2,558						2,867	2,970
IMPALA 6		2,592	\$2,599	\$2,664	\$2,849			2,891	
IMPALA V8		2,710	2,717	2,782	2,967			3,009	
CORVETTE V8						\$3,875			

* Also Utility 2 Dr. Sedan, 6 cyl., \$2,160

** Also Utility 2 Dr. Sedan, V8, \$2,278

PRINCIPAL FACTORY-INSTALLED OPTIONAL EQUIPMENT AND ACCESSORIES†

Super Turbo-Fire V8 engine—230 hp	\$ 29.10
Ramjet Fuel Injection V8 engine—250 hp.	484.20
Turbo-Thrust V8 engine—250 hp.	80.70
Super Turbo-Thrust V8 engine—280 hp.	150.65
245 hp Corvette V8 engine ①.	150.65
Overdrive ②.	107.60
Powerglide Transmission.	199.10
Turboglide Transmission ③.	242.10
Power Steering ④.	75.35
Power Brakes ④.	43.05
Power Windows ⑤.	102.25
6-Way Power Seat ④.	102.25
Heater (De Luxe) and Defroster.	80.25
Radio (Push Button) and Antenna.	84.00
Air Conditioning (Including heater and defroster) ④ ⑥.	468.10
Air Suspension ④ ⑦.	134.50

① Optional on Corvette only. ② Optional with 6 cylinder engine, Turbo-Fire V8 and Super Turbo-Fire V8. ③ Optional on V8's except Corvette. ④ Not available on Corvette. ⑤ \$59.20 on Corvette. ⑥ Not available on 6 cylinder models or convertibles. ⑦ Not available on 6 cylinder models or cars with synchro-mesh transmission.

† Manufacturer's Suggested Retail Delivered Price.

PONTIAC

MANUFACTURER'S SUGGESTED RETAIL PRICES

Series	Sedans		Hardtops		Convertibles	4 Dr. Station Wagons	
	2 Dr.	4 Dr.	2 Dr.	4 Dr.		6 pass.	9 pass.
CATALINA	\$2,633	\$2,704	\$2,768	\$2,844	\$3,080	\$3,101	\$3,209
STAR CHIEF	2,934	3,005		3,138			
BONNEVILLE			3,257	3,333	3,478	3,532	

PRINCIPAL FACTORY-INSTALLED OPTIONAL EQUIPMENT AND ACCESSORIES†

300 hp engine.....	\$ 24.19
315 hp engine.....	90.30
Super Hydra-Matic Transmission.....	231.34
Power Steering.....	107.50
Power Brakes.....	43.00
Power Windows.....	107.50
6-Way Power Seat.....	102.12
Heater and Defroster.....	101.65
Radio (Wonder Touch) and Antenna.....	101.65
Air Conditioning ①.....	430.40
Air Suspension ②.....	188.13

①Optional on all Super Hydra-Matic models with heaters.

②Available only with Power Steering.

† Manufacturer's Suggested Retail Delivered Price.

OLDSMOBILE

MANUFACTURER'S SUGGESTED RETAIL PRICES

Series	Sedans		Hardtops		Convertibles	4 Dr. Station Wagons
	2 Dr.	4 Dr.	2 Dr.	4 Dr.		
DYNAMIC 88	\$2,837	\$2,902	\$2,958	\$3,036	\$3,286	\$3,365
SUPER 88		3,178	3,328	3,405	3,595	3,669
NINETY-EIGHT		3,890	4,086	4,162	4,366	

PRINCIPAL FACTORY-INSTALLED OPTIONAL EQUIPMENT AND ACCESSORIES†

300 hp Rocket engine ①.....	\$ 20.15
Jetaway Hydra-Matic Transmission ②....	231.34
Power Steering ②.....	107.50
Power Brakes ②.....	43.00
Power Windows ③.....	107.50
6-Way Power Seat.....	102.12
Heater and Defroster.....	101.88
Radio (De Luxe) and Antenna.....	101.65
Air Conditioning.....	430.40

①Optional on Dynamic 88.

②Standard on Ninety-Eight.

③Standard on Ninety-Eight except 4 Dr. Sedan.

† Manufacturer's Suggested Retail
Delivered Price.

The optional equipment and accessories listed for U. S.-built cars are a selection of principal factory-installed items. See your local dealer for other options and accessories.

BUICK

MANUFACTURER'S SUGGESTED RETAIL PRICES

Series	Sedans		Hardtops		Convertibles	Station Wagons 4 Dr.
	2 Dr.	4 Dr.	2 Dr.	4 Dr.		
LE SABRE	\$2,740	\$2,804	\$2,849	\$2,925	\$3,129	\$3,320
INVICTA		3,357	3,447	3,515	3,620	3,841
ELECTRA		3,856	3,818	3,963		
ELECTRA 225		4,300*		4,300	4,192	

* 6-window Riviera.

PRINCIPAL FACTORY-INSTALLED OPTIONAL EQUIPMENT AND ACCESSORIES†

300 hp engine ①	\$ 51.60
Twin Turbine Transmission ②	220.38
Triple Turbine Transmission ③	295.63
Power Steering ④	107.50
Power Brakes ④ ⑤	43.00
Power Windows ⑥ ⑦	107.50
6-Way Power Seat ⑦	102.13
Heater and Defroster	102.13
Radio (Sonomatic) and Antenna	102.13
Air Conditioning	430.00
Air Suspension (rear only) ⑧	145.13

- ① Optional on Le Sabre only.
- ② Standard on Invicta and Electra.
- ③ \$75.25 on Invicta and Electra.
- ④ Standard on Electra.
- ⑤ Available only with automatic transmission.
- ⑥ Standard on Electra Convertible.
- ⑦ Not available on Le Sabre 2 Dr. Sedan.
- ⑧ Available only with power steering.

† Manufacturer's Suggested Retail
Delivered Price.

CADILLAC

MANUFACTURER'S SUGGESTED RETAIL PRICES

Series	Hardtop		Convertible	Limousine	Sedan
	2 Dr.	4 Dr.		9 pass.	9 pass.
SIXTY-TWO	\$4,892	\$5,080*	\$5,455		
COUPE DE VILLE & SEDAN DE VILLE	5,252	5,498*			
SIXTY SPECIAL		6,233			
ELDORADO BIARRITZ & SEVILLE	7,401		7,401		
ELDORADO BROUGHAM		13,075			
SEVENTY-FIVE				\$9,533	\$9,748

*For either 4-window or 6-window models.

PRINCIPAL FACTORY-INSTALLED OPTIONAL EQUIPMENT AND ACCESSORIES *†

Power Windows ①.....	\$118.45
6-Way Power Seat ② ③.....	118.45
Heating System ④.....	128.70
Radio and Antenna ④.....	164.60
Air Conditioning.....	473.60
Air Suspension ④.....	214.60

* Hydra-Matic Transmission, Power Steering and Power Brakes standard on all models. Eldorado Brougham is fully-equipped; there are no options.

①Optional on 2 Dr. and 4 Dr. Hardtops in Series 62; standard on all other models.

②Standard on Eldorados; not available on Series 75; optional on all others.

③2-Way Power Seat standard on all models except Series 62 Hardtops and Eldorados.

④Standard on Eldorados.

† Manufacturer's Suggested Retail Delivered Price.

VAUXHALL

MANUFACTURER'S SUGGESTED RETAIL PRICES†

4 Door Sedan.....\$1,987.50

5 Passenger 4 Door Station Wagon 2,400.00

DEALER INSTALLED ACCESSORIES

<i>Item</i>	<i>Price*</i>
Radio.....	\$59.85
Antenna.....	4.90
Electric Clock.....	31.50
Trunk Light (Sedan).....	3.70
W/S Washer.....	17.80
Outside R. V. Mirror.....	7.25
Glove Box Light.....	1.75
Cigar Lighter.....	3.95

† F.O.B. New York, N. Y.

* Manufacturer's Suggested Price. State and local taxes and installation extra.

OPEL

MANUFACTURER'S SUGGESTED RETAIL PRICES†

2 Door Sedan.....\$1,987.50

5 Passenger 2 Door Station Wagon 2,400.00

DEALER INSTALLED ACCESSORIES

<i>Item</i>	<i>Price*</i>
Radio.....	\$77.75
Antenna.....	10.25
Interference Eliminator.....	5.80
W/S Washer.....	7.20
Outside R. V. Mirror.....	3.75
Back up Lights.....	3.15
Bumper Guards—F or R.....	8.15 each

† F.O.B. New York, N. Y.

* Manufacturer's Suggested Price. State and local taxes and installation extra.

These suggested retail car prices do not include destination charges and state and local taxes, if any.

FOR ADDITIONAL

PRINTED
IN
U.S.A.

GM
19
59