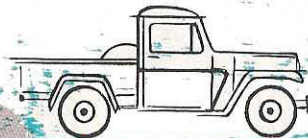
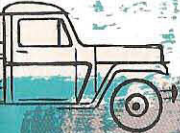
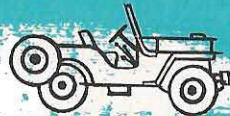
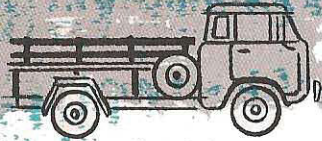
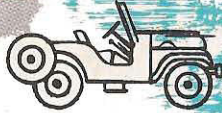
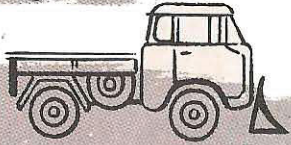


Jeep[®]

4-WHEEL DRIVE VEHICLES



WILLYS MOTORS, INC.
WORLD'S LARGEST MANUFACTURER
OF 4-WHEEL DRIVE VEHICLES

THERE'S A 'Jeep' VEHICLE FOR YOUR TOUGHEST JOB!



'JEEP' FC-150 TRUCK puts maximum payload on minimum wheelbase. Has shorter turn radius for higher maneuverability. Wide window visibility. F-Head "Hurricane" engine gives 4-cylinder economy.

'JEEP' UNIVERSAL CJ-5 loads 1,476 lbs. of cargo. Modern design combines with traditional 'Jeep' ruggedness. Optional metal and fabric tops. F-Head "Hurricane" engine.



'JEEP' FC-170 TRUCK is the payload and performance leader of its weight class. "Up front" Forward Control styling means more space for bigger cargoes. High torque, "Super Hurricane" 6-cylinder engine.

The complete line of 'Jeep' vehicles is world famous for ruggedness, versatility and economy.

All 'Jeep' 4-wheel drive models are designed and built as 4-wheel drive vehicles—not modified 2-wheel drives.

'Jeep' vehicles are built to deliver more power . . . bigger payloads . . . better performance at lower cost. And now . . . the complete line offers new paint options, new color combinations, new fabrics, new interior trim options and many new styling features—at no increase in price.

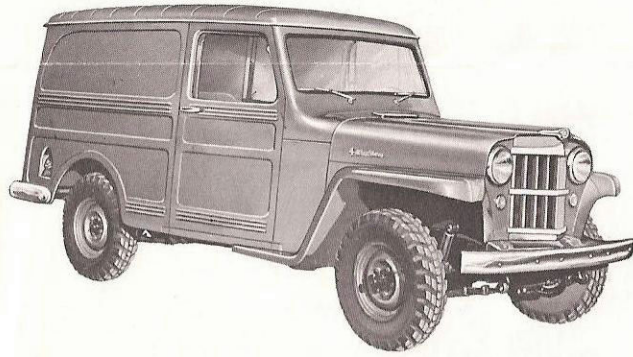


'JEEP' 4WD UTILITY WAGON carries 1,000 lbs. cargo or six passengers. Newly styled inside and out, with 1-piece windshield and 1-piece tailgate glass. Choice of 4 or 6-cylinder engines.



'JEEP' 2WD STATION WAGON is America's lowest-priced, full-sized station wagon. Features white sidewalls, carpeting, new two-tone color combinations, new 1-piece tailgate glass. Easy handling, roomy. Choice of engines.

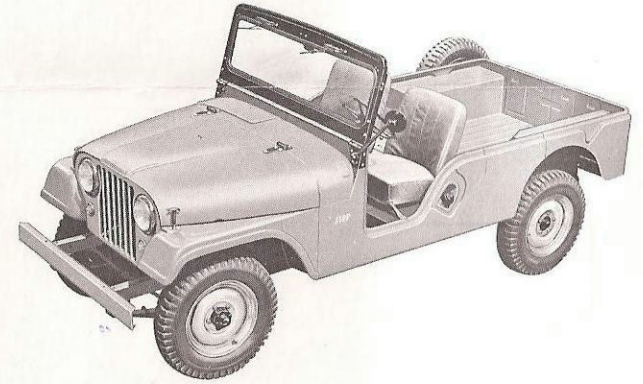
So, whether you go rugged 4-wheel drive, or easy-handling 2-wheel drive, a 'Jeep' vehicle is your best buy now more than ever!



'JEEP' PANEL DELIVERY has spacious interior for a variety of payloads. Most versatile panel delivery of its type yet least expensive to own and operate. 2 or 4-wheel drive.



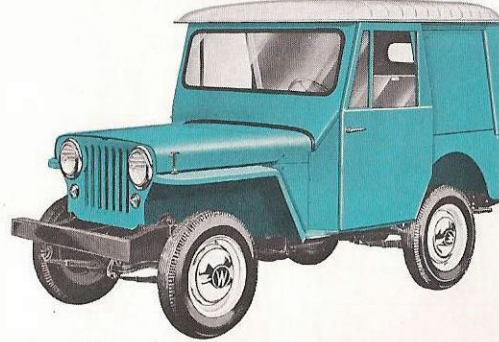
'JEEP' SURREY DJ-3A "with the fringe on top" caters to resort hotels, a variety of small and large businesses, and the carefree set. Lowest initial cost, highest economy of operation make it first choice of many fleet leasing and rental companies. Three 2-tone color combinations at no extra cost.



'JEEP' UNIVERSAL CJ-6 is the biggest 'Jeep' Universal. Six-ft. cargo bed (with tailgate extended) carries 1,564 lbs. Optional all-weather canvas tops. Extra rugged... extra large... extra economical.



'JEEP' PICK-UP TRUCK is available for delivery in six chassis options. Hauls 80% of its curb weight. New inside-outside styling and color combinations. New Torflex seat springs for better riding, more comfort. Low price, high resale value.



'JEEP' DISPATCHER DJ-3A is the ideal pick-up delivery vehicle for congested metropolitan areas. Used widely by both large and small businesses, and for patrol and traffic control work of law enforcement agencies. Highly maneuverable and economical to operate. 4-cylinder, L-head engine.



'JEEP' UNIVERSAL CJ-3B combines world-famous stamina with go-anywhere ability. Optional all-weather canvas tops. Hauls 55% of curb weight. (All 4-wheel drive 'Jeep' vehicles can be equipped with a wide variety of power take-off operated, 'Jeep' approved special equipment.)

'JEEP' VEHICLES ARE MADE ONLY BY . . . WILLEYS MOTORS, INC.

WATCH "MAVERICK" EVERY WEEK . . . SEE 'JEEP' VEHICLES IN ACTION!

THE COMPLETE LINE OF **Jeep** VEHICLES

Specifications subject to change without notice

	JEEP UNIVERSAL			DJ-3A (2WD)		FORWARD CONTROL FC-150 (Cab & Chassis)	FORWARD CONTROL FC-170 (Cab & Chassis)	FORWARD CONTROL FC-170 DUAL WHEEL OPTION 3-SPEED 4-SPEED (Cab & Chassis) (Cab & Chassis)		4-WHEEL DRIVE PICK-UP TRUCK (Cab & Chassis)	4-WHEEL DRIVE UTILITY WAGON (Cab & Chassis)	PANEL DELIVERY 4-WHEEL DRIVE 2-WHEEL DRIVE		2-WHEEL DRIVE STATION WAGON
	CJ-3B	CJ-5	CJ-6	DISP.	SURREY									
Wheelbase	80"	81"	101"	80"		81"	103 5/8"		118"	104 1/2"				
G.V.W. (lb.)	3500	3750	3900	2600/ 3500	2600	5000	7000	8000	9000	6000	4500			4300
Curb Weight (lb.)	2243	2274	2336	1815	1925	3017	3060	3720	3817	2952	3345	3147	2998	2993
Shipping Weight (lb.)	2132	2163	2225	1709	1819	2896	2901	3561	3658	2817	3206	3008	2859	2858
Cab to Axle Measurement	Not Applicable					51 1/16"	74 1/2"	74 1/2"		42"	Not Applicable			
Cargo Bed Length	38"	39 3/4"	59 3/4"	38 3/4"		74 1/4"	109 3/4"	(Stake) 126 3/4"		80"	68 1/2"			
Standard Tires	6.00-16			6.40-15		7.00-15	7.00-16	7.00-16		7.00-16	7.00-15	6.70-15	6.70-15 (CAPTIVE-AIR WH. SIDEWALL)	
Tread - Front	48 7/16"			48 3/4"		57"	63 1/2"	63 1/2"		57"	57"			
Tread - Rear	48 7/16"			48 3/4"		57"	63-13/16"	72 1/4"		63-13/16"	57"			
Transmission Brake	Standard			No		Optional							Not Applicable	
Electrical System	12 Volt Standard, 6 Volt Optional													
Dual Rear Wheels	Not Applicable						Standard			Not Applicable				
ENGINE - STANDARD	HURRICANE		4-CYLINDER L-HEAD		HURRICANE		HIGH TORQUE SUPER-HURRICANE			HIGH TORQUE SUPER-HURRICANE			HURRICANE	
Number of Cylinders	4-Cylinder		4-Cylinder		4-Cylinder		6-Cylinder			6-Cylinder			4-Cylinder	
Type of Valve Arrangement	F-Head		L-Head		F-Head		L-Head			L-Head			F-Head	
Piston Displacement (cu. in.)	134.2		134.2		134.2		226.2			226.2			134.2	
Compression Ratio	6.9:1		6.48:1		6.9:1		6.86:1			6.86:1			7.4:1	
Bore and Stroke	3-1/8"x4-3/8"		3-1/8"x4-3/8"		3-1/8"x4-3/8"		3-5/16"x4-3/8"			3-5/16"x4-3/8"			3-1/8"x4-3/8"	
Rated Horsepower @ RPM	72 @ 4000		60 @ 4000		72 @ 4000		105 @ 3600			105 @ 3600			75 @ 4000	
Rated Torque @ RPM	114 @ 2000		105 @ 2000		114 @ 2000		190 @ 1400			190 @ 1400			114 @ 2000	
Optional Engine	None						4-Cylinder, F-Head Hurricane			6-Cyl. L-Head				

ALL 'JEEP' VEHICLES MAY BE MODIFIED WITH FACTORY APPROVED SPECIAL EQUIPMENT OPTIONS. SEE YOUR 'JEEP' DEALER FOR FULL INFORMATION.

WILLYS MOTORS, INC.
Toledo, Ohio