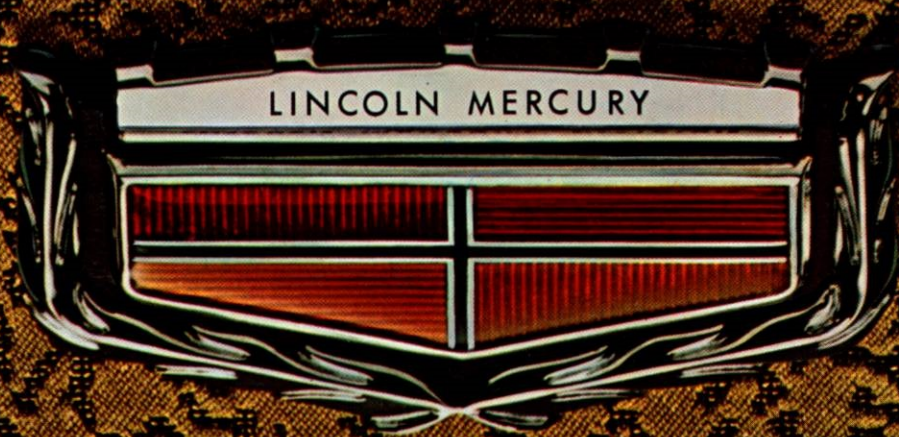


1969



MARQUIS/MARAUDER

From the makers of Lincoln Continental: a great new break through in medium-price cars.

For 1969, Marquis presents an exciting line-up of medium-price cars, not only new in looks and performance, in engineering and design, but totally new in their concept of value and luxury.



Marquis Brougham two-door hardtop

Marquis and Marauder

The only medium-price cars you can buy that enjoy common bonds with the foremost motorcar in North America today — the distinguished Lincoln Continental.

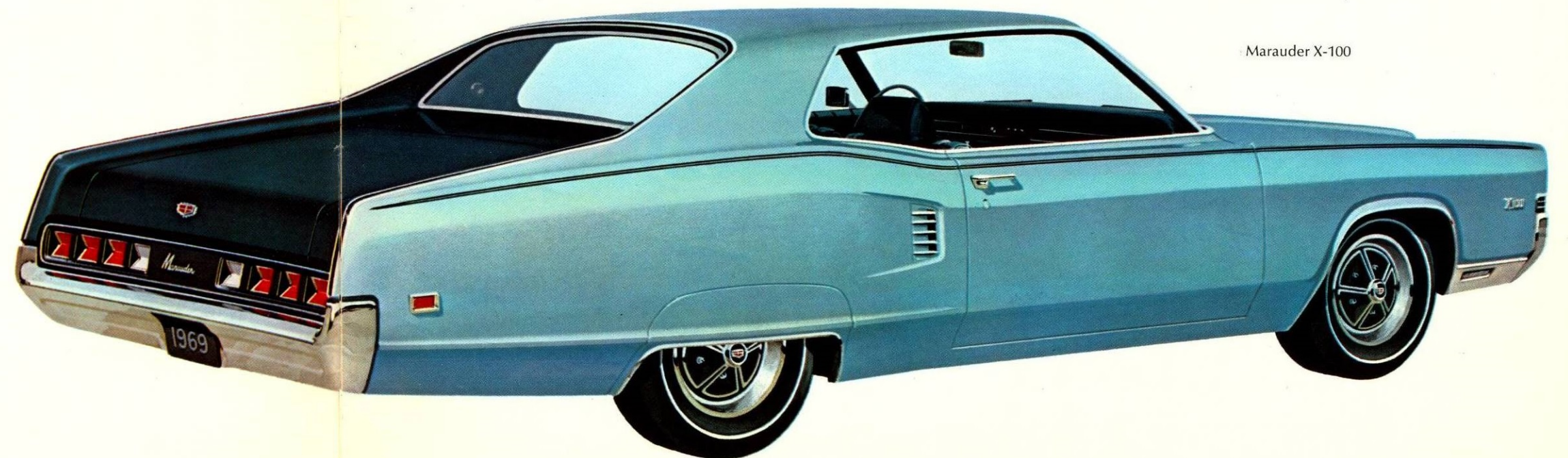
The only cars that share a level of luxury with the most luxurious of them all, the Continental Mark III.

The only medium-price cars built by the men who build the Lincoln Continental. And who knows more about luxury?

Marquis — most dramatically styled car since the Continental Mark III.

Marauder — the sports car spirit from Cougar, the elegance from Lincoln Continental.

Whichever one you choose, you'll see what Lincoln Continental tradition means.



Marauder X-100

Marquis: a medium-priced car despite the luxury-car look

Introducing the fabulous new Marquis and Marquis Brougham four-door hardtops. One look tells you their proud kinship with the Lincoln Continental. A remarkable level of luxury is apparent everywhere, for the men who make the Marquis are the same who build the Lincoln Continental — and nobody knows more about luxury. The styling of Marquis sweeps full length — from richly detailed die-cast grille to massive wrap-around rear bumper. And there's command performance from the powerful 429 cubic-inch V-8 and Select-Shift automatic transmission, optional in Marquis, standard in Marquis Brougham. The Brougham offers distinctions of its own: jewel-like

Brougham crest, unique ornamentation. Both share advanced styling touches, such as concealed headlamps, ventless side windows with accented glass curvature for super-smooth blending of body and roofline and dramatic full-width taillamps. Marquis and Marquis Brougham — the most dramatically styled cars since the Continental Mark III; the most luxurious medium-priced cars ever!

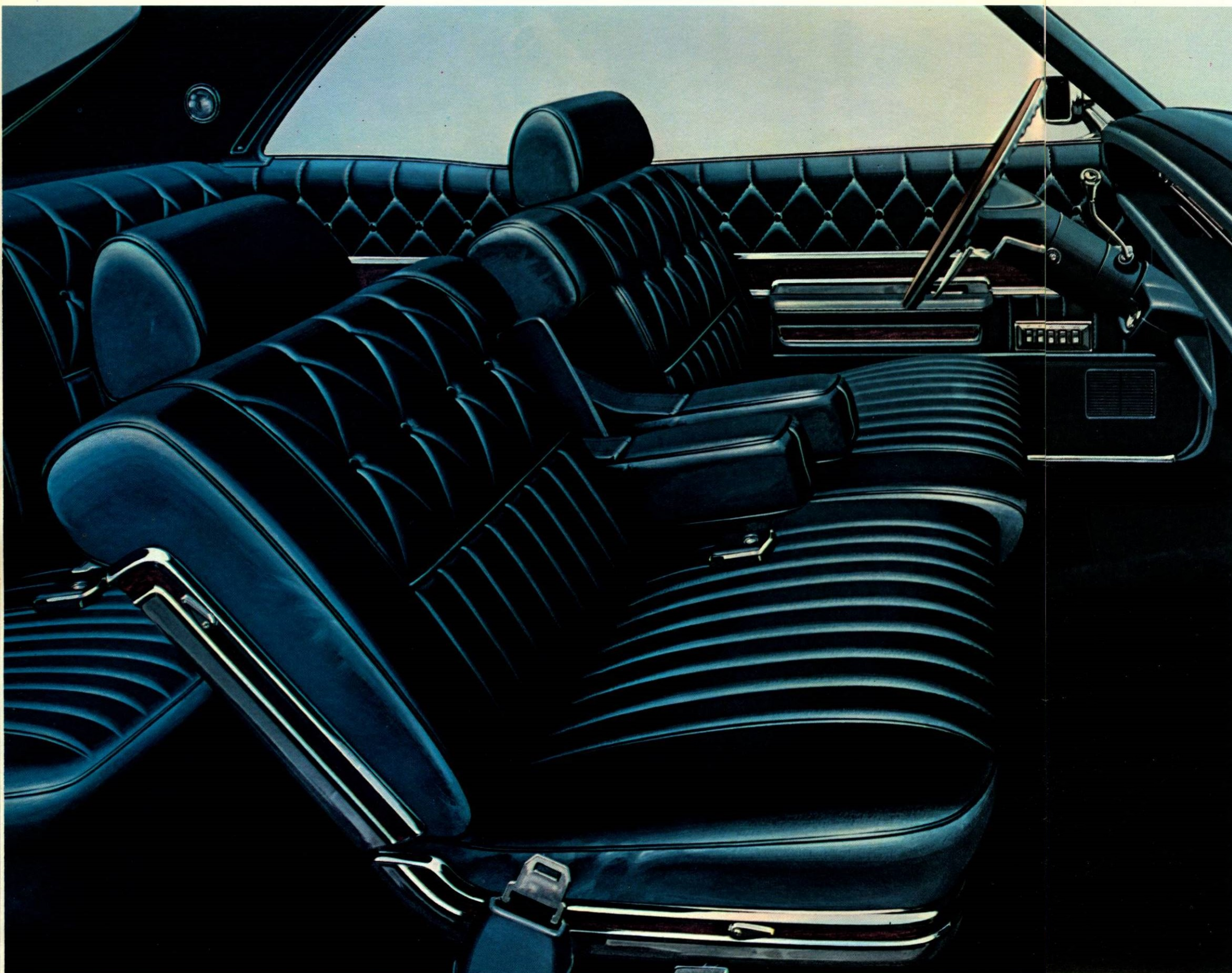


Marquis four-door hardtop



Marquis Brougham four-door hardtop





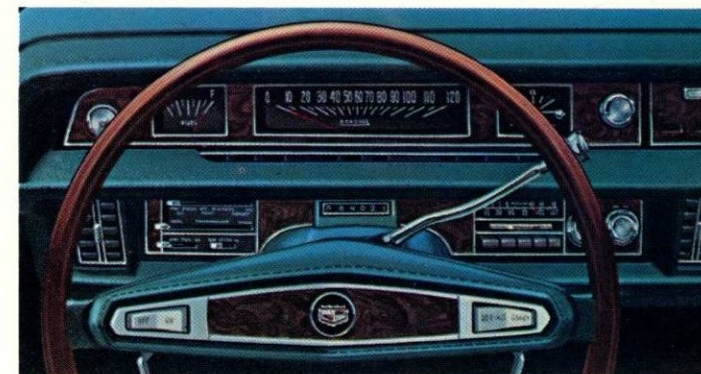
Marquis Brougham Twin-Comfort Lounge Seats

The Marquis Brougham and the Marquis interiors: uniquely spacious, dramatically elegant

A good deal of time was spent designing the magnificent Brougham interior because you may wish to spend a good deal of time inside it. Interiors immediately establish the high level of luxury for which Brougham stands. With the optional twin-comfort lounge seats each seat is individually adjustable with its own arm rest. At your request, optional six-way power seats may be installed for driver only, or driver and passenger. An optional reclining passenger seat is also available. A centre arm rest highlights the spacious front compartment. Seats are upholstered in your choice of cloth and vinyl or all vinyl, all specially treated for greater soil resistance and for easier cleaning. Simulated burled-walnut inserts add richness to the bright seat side shields. Pleated door trim panels are another luxury touch. You can elect to add Combination AM Radio/Stereo-Sonic tape system, Whisper-Aire conditioner, Tilt steering wheel, Remote-control trunk release or your choice of options described on pages 18-19. Brougham just as it is, is elegant! You can make it truly magnificent.



Luxurious Marquis interior





Marquis four-door sedan

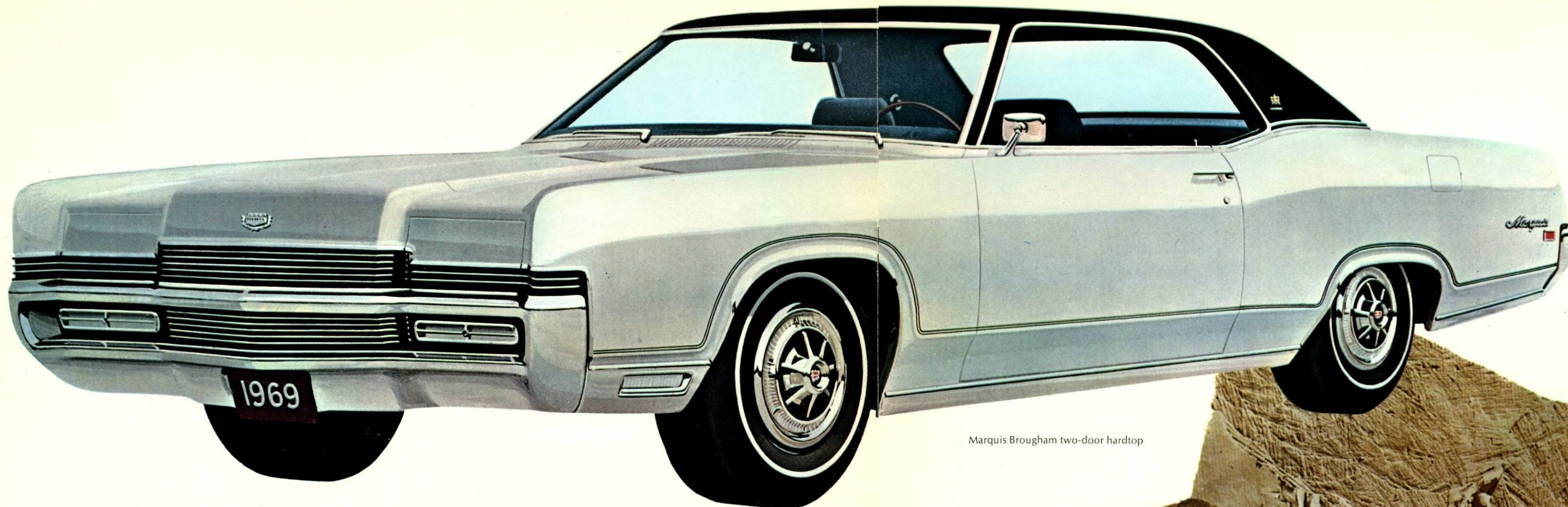


Marquis Brougham four-door sedan

The four-door sedan in elegant new guise: Marquis and Marquis Brougham

Only the makers of Lincoln Continental could bring so classic a look to the medium-price field. The front end, totally and unmistakably new, sets the stage for all the beauty to follow. Its two-tiered die-cast grille houses concealed dual headlamps, allowing an unbroken sweep of gleaming metal when closed. Full park windshield wipers lie virtually flush with the long sculptured hood. Deluxe wheel covers are standard on both the Marquis Brougham and the Marquis, as are ventless side windows and slender centre pillars — all contributing notably to the sleek pro-

file. The exterior beauty has its match in the interior comfort offered by these distinguished sedans. Importantly, there is an abundance of leg, hip, shoulder and head room. Seats are specially padded, contoured and angled for the ultimate in comfort and support. The ride is limousine-like in smoothness and silence thanks to the exclusive road-tuned chassis and suspension design and a new, longer 124-inch wheel-base. And, of course, there are many options available for Brougham and Marquis; they are listed on pages 18 and 19.



Marquis Brougham two-door hardtop



Marquis two-door hardtop

Marquis and Marquis Brougham two-door hardtops . . . the most distinguished in their field

Nowhere is the Lincoln Continental influence more apparent than in this pair of striking two-door hardtops. Nor are Lincoln attributes limited to styling details alone. Marquis has a full 124-inch wheelbase. With wider track, large front springs, extra insulation, enlarged stabilizer bar and ultra-quiet exhaust — the overall ride is surpassed in hushed smoothness only by the Continental itself. The

Marquis luggage compartment accommodates 20.6-cubic feet of travel needs. In the Brougham and Marquis the seats are upholstered in luxurious cloth and vinyl, all vinyl, or, optional in the Brougham, genuine leather and vinyl or the Twin Comfort Lounge. Seats are deeply padded, as are armrests, instrument panel and overhead areas. Select options for your Marquis from pages 18-19.

Standard Marquis Brougham equipment includes all Marquis equipment plus:

429-2V V-8 engine . . . Select-Shift transmission . . . dual lower body paint stripes . . . cloth and vinyl seats with front seat arm rests . . . bright seat side shields . . . electric clock . . . rear roof pillar lights on hardtop and sedan models . . . automatic parking brake release . . . luxury steering wheel with wood-toned rim . . . front door courtesy lights . . .

rear door courtesy light switches . . . curb molding extension . . . "C" pillar emblem and Brougham nameplate.

Standard Marquis equipment includes:

390-2V V-8 engine . . . smooth 3-speed fully synchronised transmission . . . ventless side windows . . . full width tail-lamps . . . concealed headlamps . . . full length curb molding . . . full wheel covers . . . luxurious cloth and vinyl upholstery . . . deep-loop carpet.

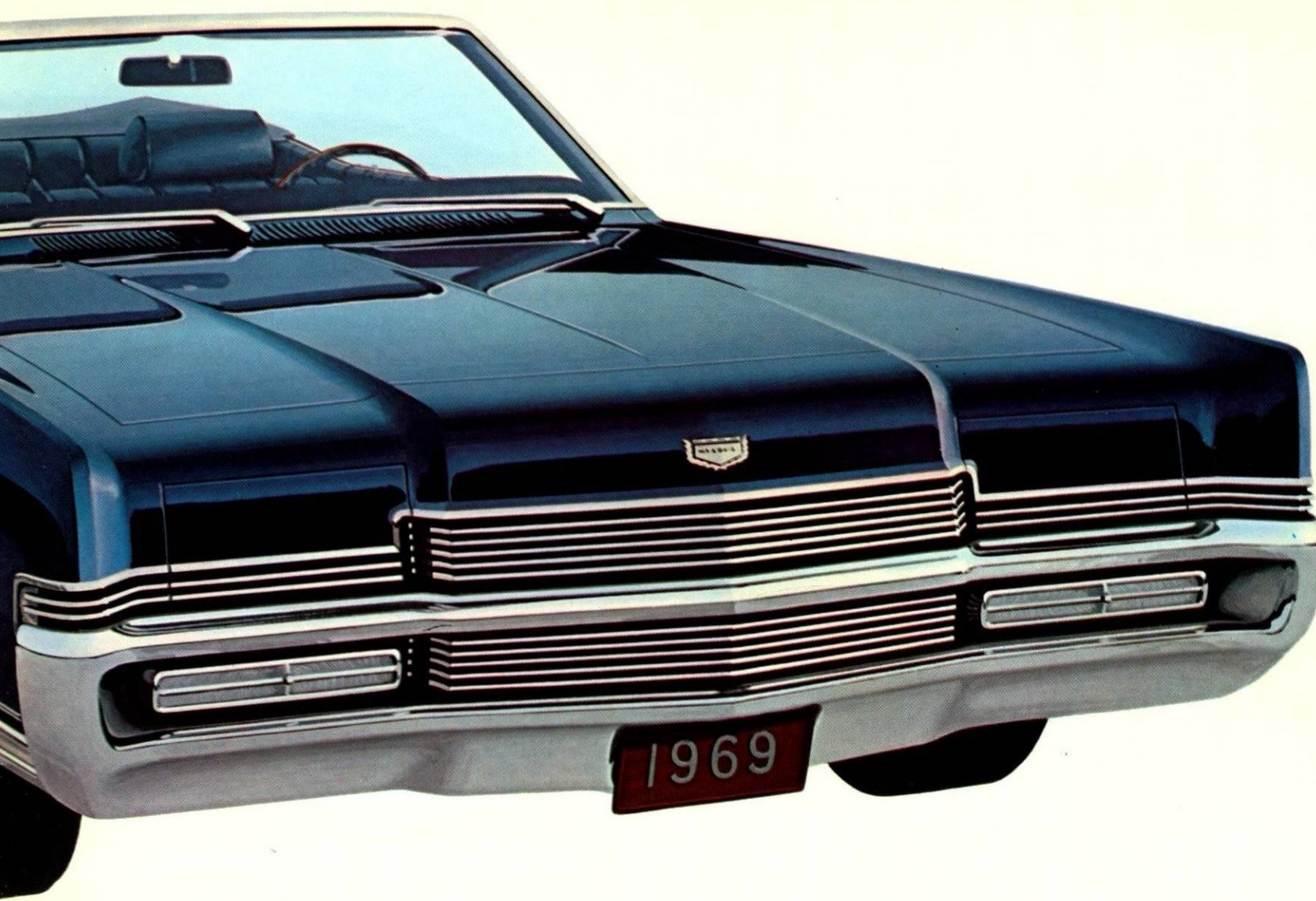
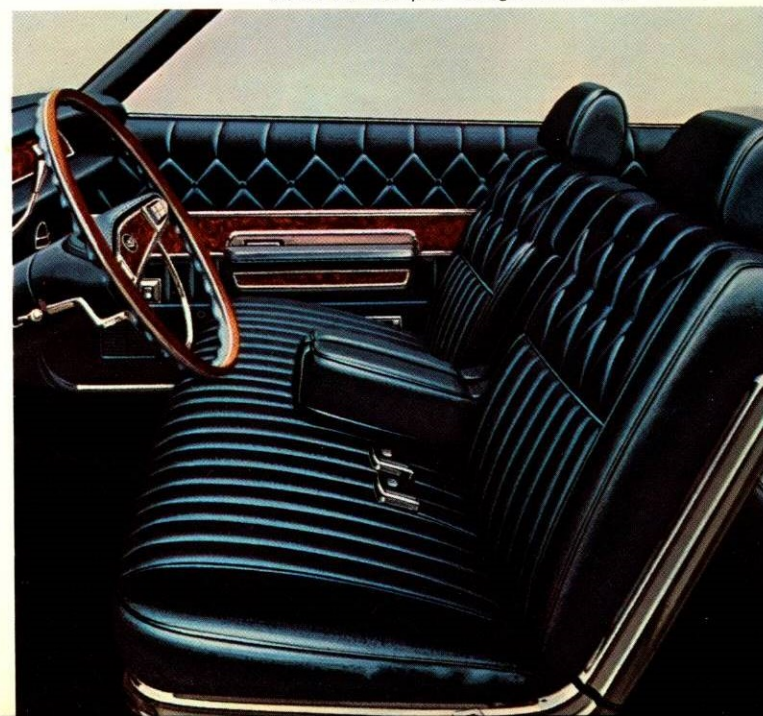




Marquis Brougham Convertible: drama under the sun

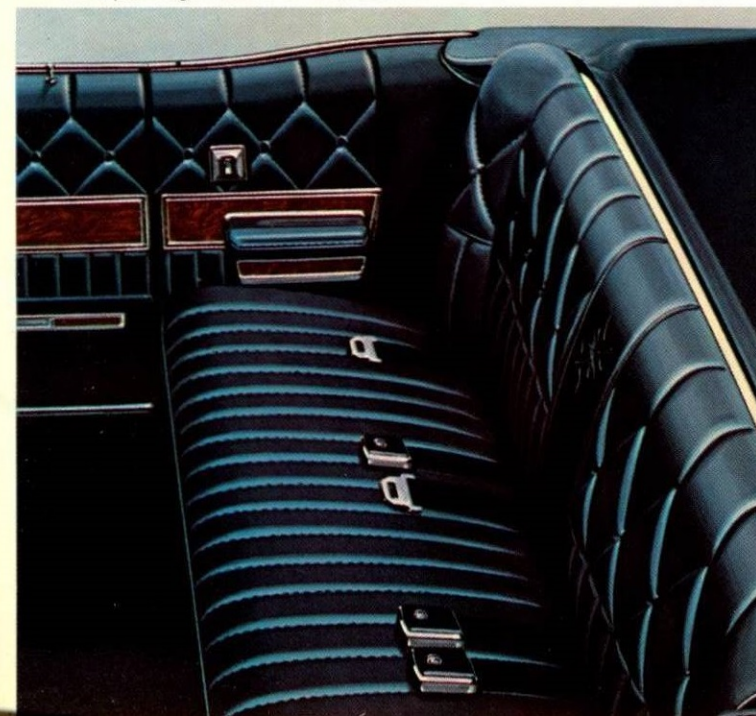
You can end your search for a luxury convertible right here. Marquis Brougham has all the dash a convertible should have without sacrificing the comfort of a luxury car. Ventless side windows allow a panoramic view with the top down. When you put the top up, a scratch-resistant, non-yellowing tempered glass rear window is in place without having to be zippered. Adding to

Standard Marquis Brougham all-vinyl interior



the excitement is the standard 429-cubic inch 2-barrel V-8 linked to a Select-Shift transmission, that shifts automatically or lets you run it through the gears. An all-vinyl interior is standard. Genuine leather-and-vinyl is optional. And good news for rear seat passengers: there's nearly one foot more hiproom and shoulder room, thanks to a trimmed-down convertible top design.

Rear passenger seat is 10-inches wider





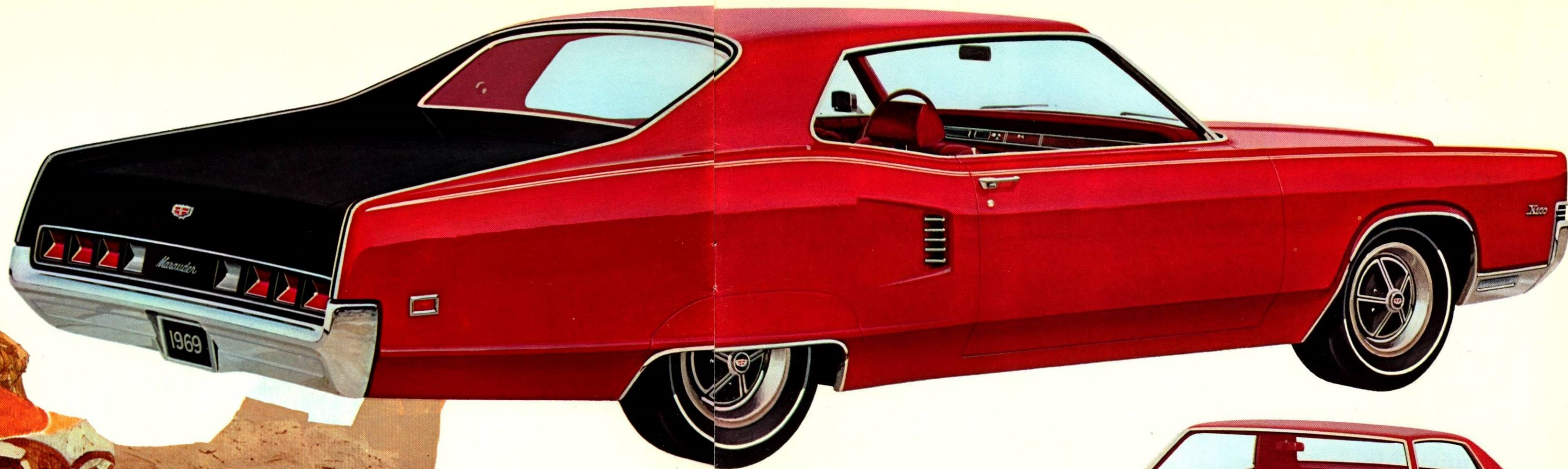
Marauder: makes a sporting thing of luxury

This is the all-new Marauder, with the prowling instincts of Cougar, and the elegance of Lincoln Continental. Unique from elegant grille to distinctive tunnel fastback. Sporty in its low profile, long-hood, short-deck design nestled on a snug 121" wheelbase. With wide stance front and rear, a powerful 390-cubic inch V-8, and heavy-duty Autolite shock absorbers to bring you the feel, ride and performance of a true road machine. And Marauder is authentically luxurious; from deep-loop nylon carpeting to warm simulated burlled-walnut inserts on doors and instrument panel. Even more individuality is available for Marauder by ordering AM/FM stereo radio, Vinyl roof, Wire wheel covers and other options listed on pages 18-19.

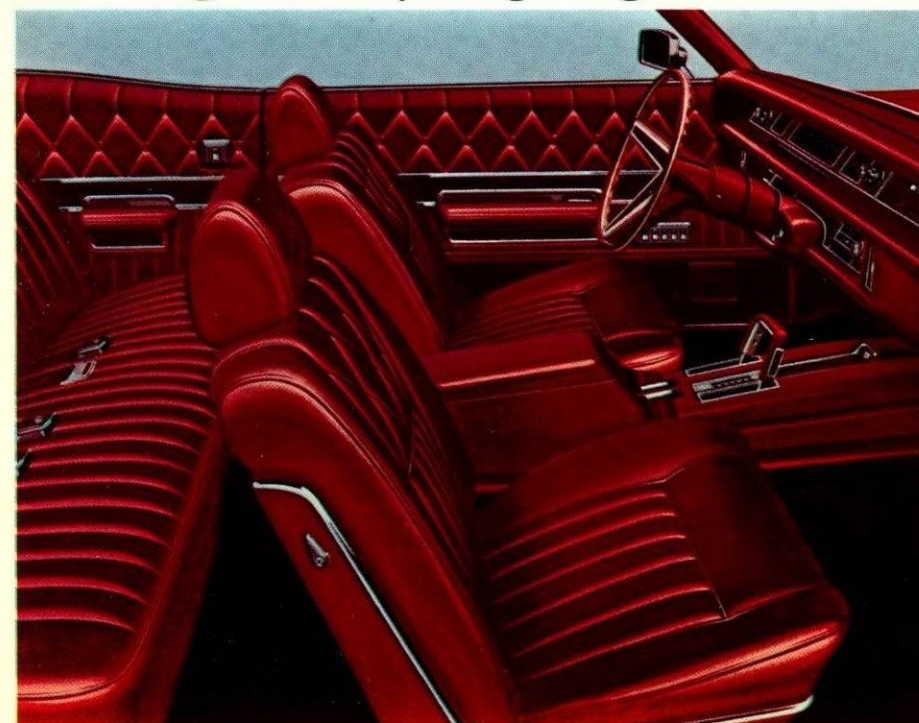
Standard Marauder equipment includes:

- 390-2V V-8 engine
- Concealed headlamps
- Tunneled rear window
- Unique taillamps with surrounding low gloss two-tone paint
- Dual thin upper body paint stripes
- Ventless side windows
- Bright rear roof peak molding
- Cloth-and-vinyl interior
- Marauder name embossed in simulated woodgrain instrument panel appliqué
- Front side marker with bright molding
- Simulated woodgrain appliqué on door trim panels





Marauder X-100! the elegant way of going all out.



Vinyl bucket seats and centre sports console available at no extra cost.

X-100. The name suggests all-out performance, a custom edition car for those who know and savour sportiness, distinctive styling and sophisticated luxury. And what the name suggests, the car confirms. Powerfully, with a 429-cubic inch, four-barrel V-8, 360 horsepower strong and Select-Shift transmission as convincing evidence. Stylishly, with sports tone matte finish on trunk tunnel area, dual upper body paint striping, and a boldly dramatic front end. Luxuriously, including the all-vinyl bucket seat and centre sports console format shown at left. And, in addition to the regular Marauder features listed on the previous page, you get these exclusive X-100 features:

- 429-4V V-8 engine
- Select-Shift automatic transmission
- Styled aluminum wheels
- WSW fibreglass-belted wide tread tires
- Rear wheel fender skirts with bright molding
- Complementary sports tone matte finish on trunk tunnel area
- Rim-blow steering wheel
- Electric clock
- Simulated woodgrain appliqué on door panels
- Choice of three seating arrangements

The facts and figures behind fine cars

ENGINES (ALL V-8)	390 2-V (a)	390P 2-V (b)	429 2-V (c)	429 4-V (c)
Marauder	Std.	Opt.	Opt.	Opt.
Marauder X-100	Opt.	Opt.	N.A.	Std.
Marquis	Std.	Opt.	Opt.	Opt.
Marquis Brougham	Opt.	Opt.	Std.	Opt.
Specifications	390 2-V	390 2-V	429 2-V	429 4-V
Displacement (Cubic inches)	390	390	429	429
Bore & Stroke (Inches)	4.05" x 3.78"	4.05" x 3.78"	4.36" x 3.59"	4.36" x 3.59"
Horsepower (Adv. @ rpm)	265 @ 4400	280 @ 4400	320 @ 4400	360 @ 4600
Torque (Adv. lb.-ft. @ rpm)	390 @ 2600	403 @ 2600	460 @ 2200	480 @ 2800
Carburetor	2-barrel	2-barrel	2-barrel	4-barrel
Compression Ratio	9.5:1	10.5:1	10.5:1	10.5:1
Fuel	Regular	Premium	Premium	Premium
Exhaust	Single	Single	Single	Dual
Valve Lifters	Hydraulic	Hydraulic	Hydraulic	Hydraulic
Alternator (Amp.)	42	42	42	42
Oil Capacity (Quarts)	4.2	4.2	4.2	4.2
Cooling System Capacity (Quarts)	17.1	17.1	17.1	17.1
Std. - Standard; Opt. - Optional; N.A. - Not Available				

Transmissions	3-Speed Manual (d)	Select-Shift (e)
Standard with:	Marquis Marauder	Marauder X-100 Marquis Brougham
Optional with:	Marauder X-100 Marquis Brougham	Marquis Marauder

- (a) Standard with 3-speed manual; no extra cost with Select-Shift.
 (b) Standard with Select-Shift; not available with 3-speed manual.
 (c) Available only with Select-Shift; 429 4-barrel includes dual exhausts.
 (d) Column mounted control; not available with 429 2-barrel and 429 4-barrel engines.
 (e) Column or console mounted Select-Shift control.

Ford Motor Company Safety Design Features:

- Dual Hydraulic Brake System with warning light.
- Glare reduced instrument panel padding, windshield wiper arms, steering wheel hub, horn ring, rearview mirror/mirror mounting and windshield pillars.
- Energy-absorbing steering column and steering wheel.
- Energy-absorbing armrests and safety-designed door handles.
- Front and rear lap belts with front outboard retractors.
- Turn indicators with lane-changing signal feature.
- Inside day/night, yield-away rearview mirror.
- Energy-absorbing instrument panel with padding.
- Padded sun visors.
- Two-speed or variable-speed windshield wipers.
- Windshield washers.
- Double-thick laminate safety glass windshield.
- Double-yoke safety door latches and safety hinges.
- 4-way emergency flasher.
- Back-up lights.
- Side marker lights or reflectors.
- Energy-absorbing front seat back tops with padding.
- Self-locking folding front seat backs.
- Shoulder belts for outboard front seat passengers (except convertibles).
- Safety-designed vehicle front structure.
- Safety-designed coat hooks.
- Safety-designed window regulator knobs.
- Safety-designed radio control knobs and push buttons.
- Outside rearview mirror, driver's side.
- Safety rim wheels and load-rated tires.
- Corrosion-resistant brake lines.
- Uniform transmission shift quadrant.

Exterior and Interior Dimensions

DIMENSIONS	MARAUDER		MARQUIS AND MARQUIS BROUGHAM		
	2-Door Hardtop	4-Door Sedan	2-Door Hardtop	4-Door Hardtop	Convertible
Wheelbase	121"	124"	124"	124"	124"
Wheel Tread — front	63.0"	63.0"	63.0"	63.0"	63.0"
Wheel Tread — rear	64.0"	64.0"	64.0"	64.0"	64.0"
Overall length	219.1"	224.3"	224.3"	224.3"	224.3"
Overall height — design	54.2"	53.8"	53.8"	53.8"	54.2"
Overall width	79.6"	79.2"	79.2"	79.2"	79.2"
Usable luggage capacity (cu. ft.)	18.0"	20.6"	20.6"	20.6"	17.0"

Interior Dimensions

(Front seat in rearmost position)

Front Headroom (eff.)	37.6"	37.7"	37.6"	37.7"	38.8"
Front Legroom (eff.)	41.7"	41.7"	41.7"	41.7"	41.7"
Front Hiproom	62.3"	62.3"	62.3"	62.3"	62.3"
Front Shoulder Room	62.0"	62.0"	62.0"	62.0"	62.0"
Rear Headroom (eff.)	36.4"	36.8"	36.4"	36.8"	37.0"
Rear Legroom (eff.)	34.1"	39.7"	34.1"	39.7"	32.5"
Rear Hiproom	61.1"	62.3"	61.1"	62.3"	59.4"
Rear Shoulder Room	60.7"	61.8"	60.6"	61.8"	60.9"

The specifications contained herein were in effect at the time this folder was approved for printing. However, because of continuing product improvements and refinements, Ford Motor Company of Canada, Limited, reserves the right to discontinue models at any time or change specifications or design, without notice and without incurring obligations.

Ford Motor Company of Canada, Limited

