

1973 MERCURY STATION WAGONS

COLONY PARK • MARQUIS • METEOR • MONTEGO MX • VILLAGER



Colony Park and Marquis

The most magnificent wagons in North America—Colony Park and Marquis. They bring limousine luxury to the wagon set, with an unsurpassed ride to match. The elegant Colony Park interior shown on the right, features optional Twin Comfort seats in super-soft all-vinyl. Standard bench seating is also upholstered in all-vinyl. On the far right is shown the Marquis standard interior in black all-vinyl.

Mercury Colony Park and Marquis standard features include:

400-2V V-8 engine · 3-way tailgate · Select-Shift automatic transmission · Power front disc brakes · JR78-15 steel-belted radial ply BSW tires · Power steering · Power rear window · Automatic parking brake release · Energy absorbing bumpers · Front bumper guards · Concealed headlamps · Electric clock · Inside hood latch release · Deluxe wheel covers · Spare tire extractor · Ford Motor Company Safety Design Features.

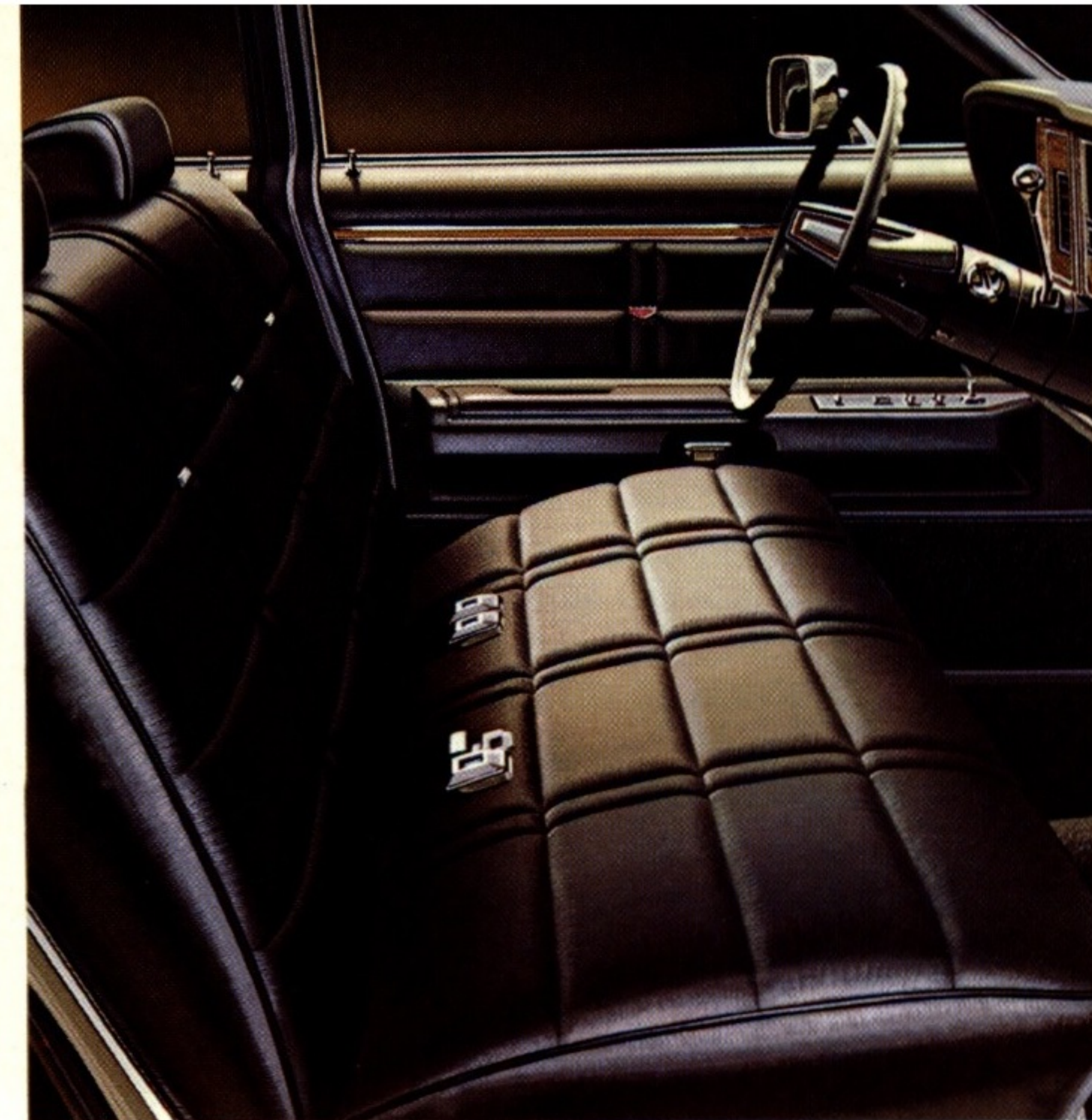
Standard equipment exclusive to Colony Park:

Teak woodgrain "Yacht Deck" body side and tailgate paneling. (Other equipment shown is optional.)

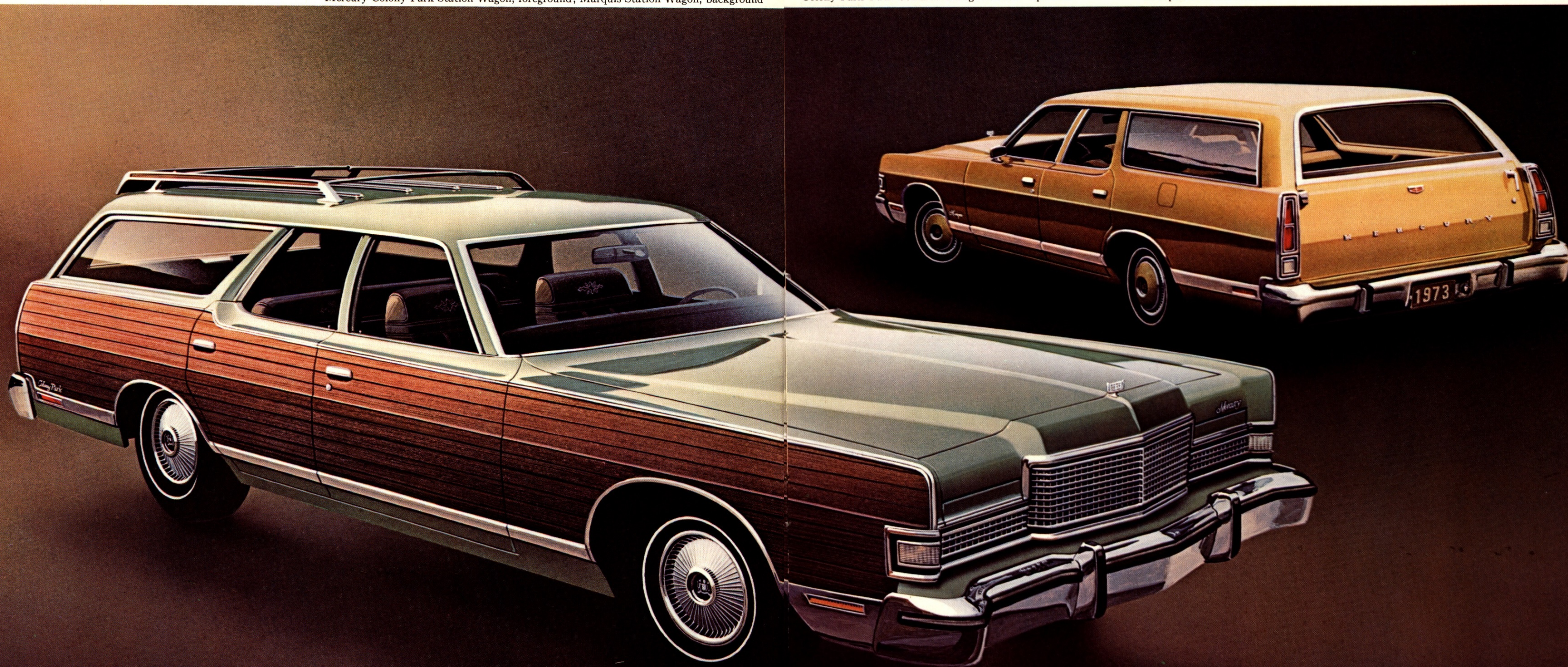
Mercury Colony Park Station Wagon, foreground; Marquis Station Wagon, background



Colony Park Twin Comfort Lounge interior—optional



Marquis standard interior

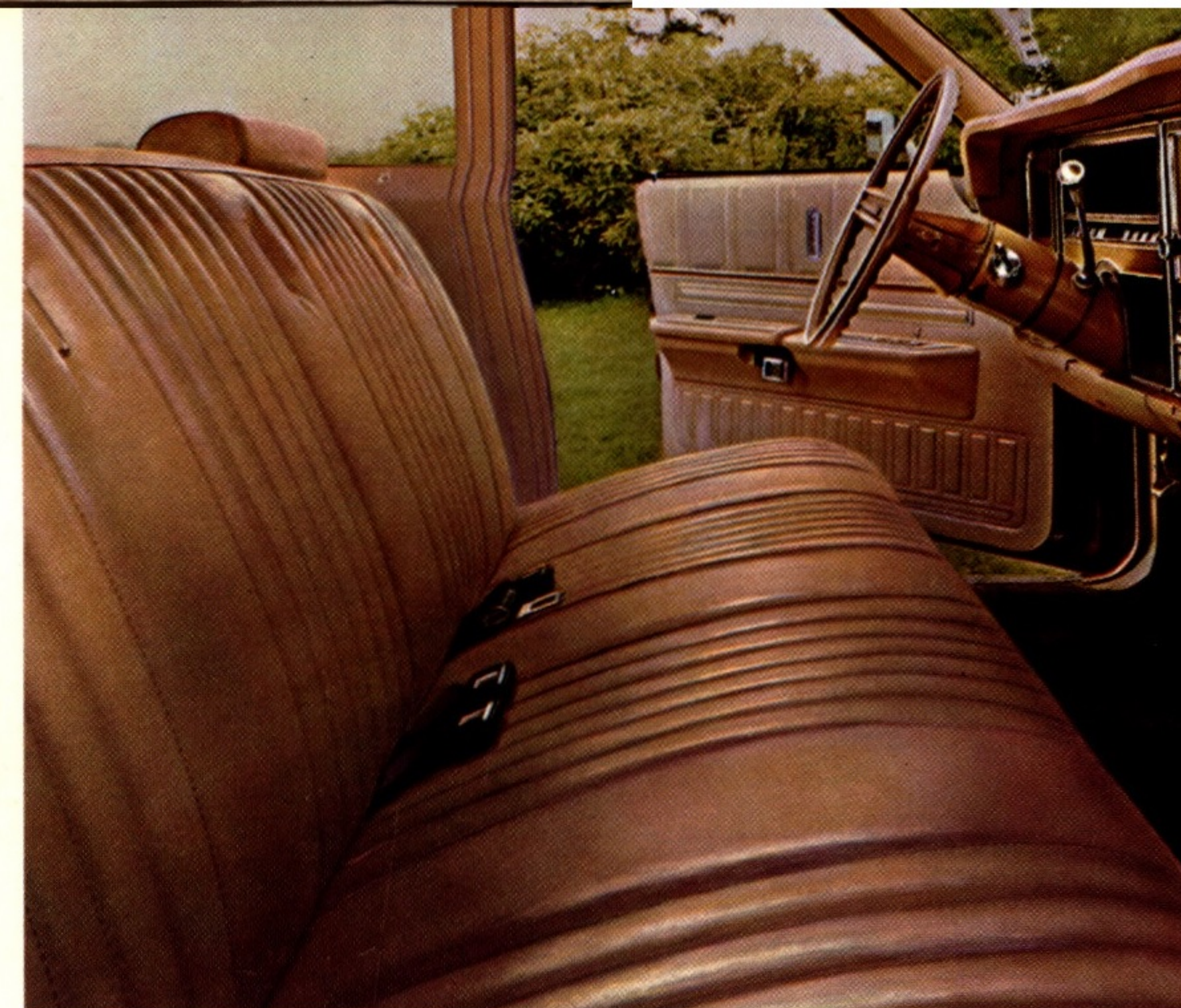


Meteor Montcalm and Rideau 500

Other wagons promise you a smooth ride—Mercury Meteor wagons deliver it. The Montcalm and Rideau 500 wagons share the same limousine-like ride as in our luxurious Colony Park. They're the best station wagon values in their class. Montcalm offers elegant styling and luxury in a wagon that's built tough, with plenty of cargo room. Rideau 500 offers you a full-size Mercury wagon at its lowest cost.

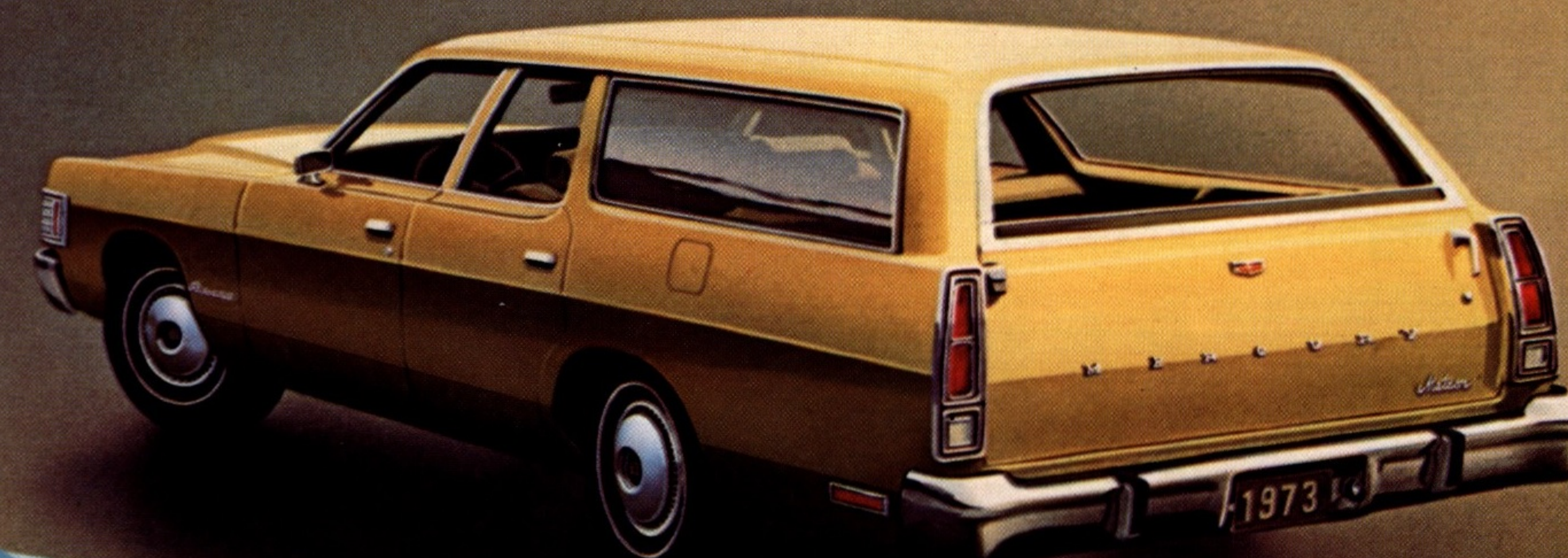
Meteor Montcalm and Rideau 500 standard features include:

400-2V V-8 engine · 3-way tailgate · Select-Shift automatic transmission · Power front disc brakes · J78-15 BSW tires · Power steering · Power rear window · Automatic parking brake release · Energy absorbing bumpers · Front bumper guards · Inside hood latch release · 100% Nylon carpeting · Spare tire extractor · Full complement of Ford Motor Company Safety Design features. (Other equipment shown is optional.)



Montcalm Station Wagon, foreground; Rideau 500 Station Wagon, background

Standard Montcalm all-vinyl trim





Montego MX Villager interior



Montego MX interior

Montego MX Villager and Montego MX

The look is long and low, like a hardtop—the ride is smooth like an expensive sedan's. Mercury's personal-size wagons are big on glamour and loaded with the better idea features to make station wagon living more enjoyable.

The Montego MX Villager interior (top left) is shown with standard Flight Bench seat with centre folding armrest. In addition to medium blue shown, it is also available in black, medium ginger and medium green. Also shown is the Montego MX Station Wagon interior in medium ginger all-vinyl. This standard interior may also be ordered in black, medium blue or medium green.

Mercury Montego MX Villager and Montego MX feature as standard:

302-2V V-8 engine · 3-way tailgate · 3-speed transmission · Dual headlamps · Energy absorbing bumpers · Front and rear bumper guards · G78-14 BSW tires · Power front disc brakes · Cherry woodgrain instrument cluster face · Two-spoke steering wheel · Deluxe insulation package · Color-keyed carpeting · Ford Motor Company Safety Design Features. Note: Other equipment shown is optional.

In addition, the Villager offers these exclusive features:

Woodgrain bodyside and tailgate paneling · Flight Bench seat with center armrest · Deluxe wheel covers · Deluxe steering wheel · Valino instrument panel cluster face and right side panel appliqué.

Montego MX Villager, foreground; Montego MX Station Wagon, background



A Better Idea on Every 1973 Mercury Station Wagon: The Versatile Three Way Tailgate!

No matter which Mercury wagon suits your needs best, one feature you'll appreciate whether you tote parcels or people is the tailgate that opens as a door (whether the rear window is rolled up or down) or drops down with the deck for easier loading of cargo.



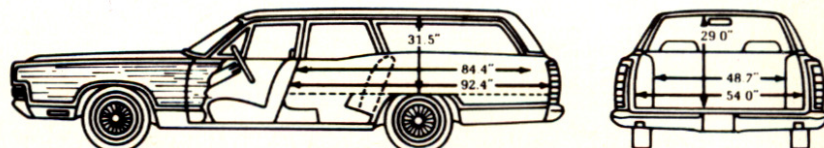
Use it as a drop gate to load cargo (above) or as a wide-swinging door for passengers (below).



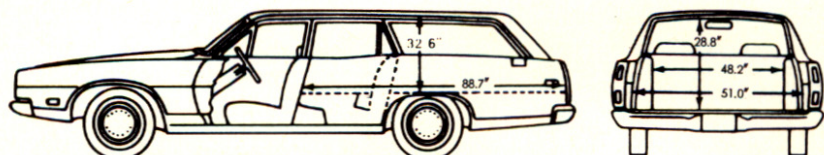
Make your Mercury wagon "playful" with this unique foldaway recreation table. Optional on Colony Park, Marquis, Meteor.



A scenic view for two is afforded in Villager and Montego MX wagons with the optional rear-facing third seat.



You'll find your 1973 Colony Park, Marquis or Meteor Station Wagon will measure up to almost any task you ask of it.



There's 91.6 cubic feet of total cargo space in Montego MX Villager and Montego MX wagons—room for hauling standard wall panels 4' x 8' laid flat.

	Engines*	Displacement (cu. in.)	Carburetor	Fuel
Colony Park Marquis Meteor	400-2V V-8 (Std. all)	400	2 barrel	Reg.
	429-4V V-8 (Opt. all)	429	4 barrel	Reg.
Villager Montego MX	302-2V V-8 (Std. all)	302	2 barrel	Reg.
	351-2V V-8 (Opt. all)	351	2 barrel	Reg.
	400-2V V-8 (Opt. all)	400	2 barrel	Reg.
	429-4V V-8 (Opt. all)	429	4 barrel	Reg.

*All 1973 engines are designed to operate on regular gasolines with a research octane rating of at least 91 when engine is adjusted to factory recommended specifications.

	Colony Park Marquis Meteor	Villager Montego MX
Wheelbase.....	121.0"	118.0"
Overall Length.....	223.4"	218.5"
Overall Width.....	79.8"	79.6"
Tread: Front/Rear.....	64.1"/64.3"	63.4"/63.5"
Cargo Volume (cu. ft.).....	105.3	91.6
Fuel Tank Capacity (gals.).....	17.4	16.6

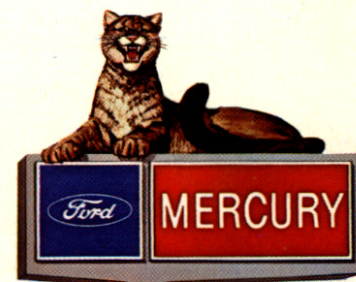
*Colony Park 79.9"

Unique options for better station wagon living: Luggage carrier with air deflector • Cornering lamps (Marquis and Colony Park only) • Rear window washer • Carpeted load floor • Padded quarter trim • Lockable storage space • Rear window electric defroster.

All 1973 Mercurys have substantially improved impact-resistant front and rear bumpers. Specifically, the bumpers meet 1973 Canadian Motor Vehicle safety standards for up to 5 mph frontal impact protection and up to 2.5 mph rear impact protection straight into a flat, vertical fixed barrier without preventing normal operation of the car's latching, fuel, cooling and exhaust systems or of the propulsion, suspension, steering and braking systems. Tests show that, with bumper guards, no substantial damage to sheet metal should result from such a barrier impact at or below these speeds.

Information shown here was correct when approved for printing. Ford Motor Company of Canada, Limited reserves the right to discontinue or change at any time, specifications or designs without incurring any obligations. Some features shown or described previously are optional equipment items which are available at extra charge. Some options are required in combination with other options.

MERCURY



Litho in Canada (1)