

Mercury Station Wagons 1976

Marquis • Meteor • Montego • Bobcat

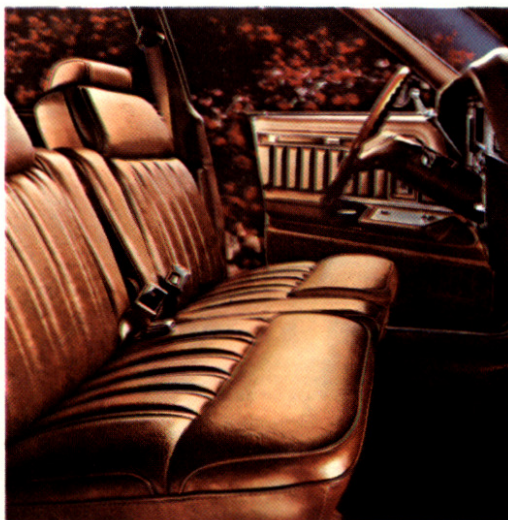


1976 Colony Park. Marquis.

Marquis Colony Park and Marquis are Mercury's roomiest station wagons and they have consistently outsold other wagons in their price class. Colony Park, our most luxurious, beautifully enhances the Mercury ride heritage with its smooth, quiet way of going and its handling ease. The Colony Park blends a rich interior, elegant standard appointments and distinctive styling with the versatility of a full-cargo station wagon. Standard luxuries are many, from electric clock and deep shag carpeting to deluxe steering wheel and woodtone vinyl exterior paneling.

Among features you'll appreciate on Colony Park and Marquis is the lockable under the floor storage compartment in the rear. Valuables can be stowed out of sight while your car is parked. Additional lockable cargo space is available with the optional side storage compartment. You'll also find the standard spare tire extractor a welcome convenience. Many convenience options are also available, ranging from luggage rack with air deflector (which aids in keeping the rear window clean), air conditioning, to anti-theft alarm system and rear compartment recreation table.

For the ultimate in station wagon luxury, you may specify the optional Grand Marquis interior for your Colony Park. This option is exclusive to Colony Park and includes genuine leather upholstery in the Grand Marquis sew-style, in your choice of blue, red, green and turtone tan/saddle, a dome/map reading lamp, and luxury steering wheel. Requires optional Twin Comfort Lounge Seats.



Colony Park interior with optional Twin Comfort Lounge Seats.

Standard features on Marquis Station Wagon:
400-2V V8 engine • Select-Shift automatic transmission • Solid-state ignition • Front bumper guards • Steel-belted radial tires • 3-way doorgate • Power rear window • Power steering • Power front disc brakes • Electric rear window defroster • Power ventilation system • Deluxe wheel covers • Spare tire extractor • Ford Motor Company Safety Design Features.

Additional standard features on Colony Park:
Electric clock • Deluxe steering wheel • Flight bench seat with centre armrest • Left-hand remote control mirror • Rosewood woodtone vinyl paneling on bodysides and doorgate • Deep shag cut-pile carpeting • Door pull straps • Brougham wheel covers • Deluxe colour-keyed seat and shoulder belts • Rear seat centre folding armrest • Courtesy lighting.

Cover illustration: Foreground—Bobcat "SC" Villager Wagon. Background—Mercury Colony Park Wagon.

Mercury Colony Park Station Wagon with the Grand Marquis luxury interior option.



1976 Meteor Montcalm. Rideau 500.

1976 Mercury Meteor station wagons offer solid, sensible value at affordable prices.

The exterior styling of these full-size wagons is impressive, with a look that's unmistakably Mercury.

Inside, there's a comfortable, big car feeling with room for six people and loads of luggage space. Meteor wagons are engineered for good operating efficiency and economy. They have a superbly smooth and quiet ride thanks to Meteor's long 121 inch wheelbase, radial tuned suspension, and generous use of sound insulating materials. Meteor is built solid from the road up—it has separate/body frame construction, with the body mounted to a strong 5 cross-member perimeter frame. There's extra protection from steel guard door rails and double-panelled roof.

There are two models to choose from—the finely appointed Montcalm and the Rideau 500. Both have Ford's famous 3-way doorgate, with a power window, standard.

Both have large, easy to load cargo areas. It's a cavernous 94.6 cubic feet. The floor area is large enough to take a

4' x 8' panel lying flat. But there's still more to come, because under the floor is another 9.1 cubic feet of cargo space that can be locked so you can keep valuables safe.

This year, Meteor wagons, like all Mercury wagons have standard and optional engines that have been refined to

give you significant fuel economy improvement as well as better driveability in terms of easier starting, better stop-and-go response and smoother acceleration. In addition, there are optional engines that run on lower-priced regular gasoline that's readily available anywhere. Ask your dealer for details.



Above, the Montcalm standard all-vinyl interior available in green, blue, gold, and saddle.

Standard features on the Rideau 500 and Montcalm station wagons: 400-2V V8 engine

- Select-Shift automatic transmission • Steel-belted radial tires • 3-way doorgate
- Solid-state ignition • Power front disc brakes • Power steering • Power rear window • Energy absorbing bumpers • 3 point restraint system • Concealed windshield wipers • Spare tire extractor
- Electric rear window defroster • Power ventilation • All-vinyl seat trim • Automatic parking brake release • 100% nylon carpeting • Ford Motor Company Safety Design Features.

Foreground: Meteor Montcalm Station Wagon shown with optional luggage rack. Background: Rideau 500 Station Wagon with optional luggage rack.



1976 Montego MX Villager. MX.

You'll love the smooth, quiet ride of the Montego station wagons. They combine the high degree of luxury and convenience you expect from a Mercury with all the practicality and handling ease of a trim mid-size wagon.

Montego MX Villager is the more sophisticated, both in its refined design and in the luxury of its appointments. The look of natural cherry woodtone along body sides and back accentuates the elegant, sculptured styling. The fully appointed interior features a padded flight bench seat with centre armrest and deep cut-pile carpeting.

Montego MX, too, is a mid-size wagon that offers a surprisingly high level of comfort. Power steering, power brakes, Select-Shift automatic transmission, cut-pile carpeting and soft vinyl seating are but a few of many fine standard features. Designed to add a generous measure of pleasure to station wagon living for '76.

Standard features also include a spacious lockable storage compartment under the cargo floor, carpeted load floor and three-way doorgate. And you can

choose from a sizeable list of options to achieve almost any level of luxury. They range from a roof rack luggage carrier with adjustable cross bar to a rear facing third seat and remote control right- and left-hand racing mirrors.

This year, Montego standard and optional engines have been refined to give you significant fuel economy improvement as well as better driveability in terms of easier starting, better stop-and-go re-

sponse and smoother acceleration. In addition, there are optional engines that run on lower-priced regular gasoline that's readily available anywhere. Ask your Mercury dealer for details.

Standard features on Montego MX Station Wagon: 351-2V V8 engine • Select-Shift automatic transmission • Solid-state ignition • Power front disc brakes • Power steering • 3-way doorgate • Steel-belted radial tires • Deluxe sound insulation • Impact resistant bumper system with front bumper guards • Cut-pile carpeting • Upper body paint stripes • Ford Motor Company Safety Design Features.

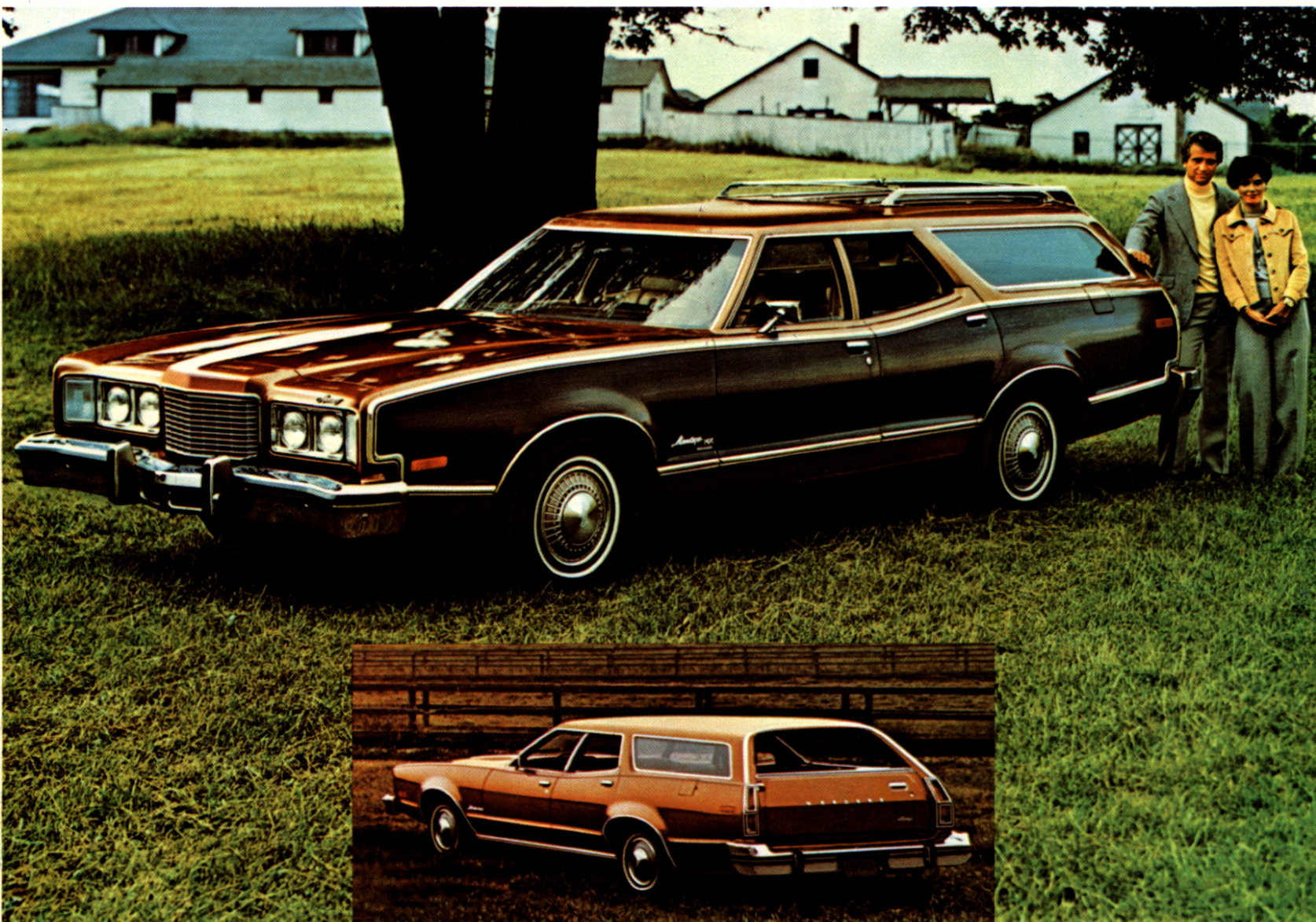
Additional standard features on Montego MX Villager: Power doorgate window • Dual-note horn • Deluxe steering wheel • Cherry woodtone vinyl paneling on body-sides and doorgate • Flight bench seat with folding centre armrest • Deluxe colour-keyed seat and shoulder belts • Deluxe wheel covers.

Below, the Montego MX Villager with optional luggage rack.

Shown inset: Mercury Montego MX Station Wagon.



Above, the standard Montego MX Villager flight bench seat with vinyl upholstery.



1976 Bobcat "SC" Villager, Bobcat Wagon

The 1976 Bobcat "SC" Villager Wagon and the Bobcat Station Wagon are a lot of cat for a little scratch.

These popular little critters are stronger and better looking than ever with a proven record of durability, comfort, and fun-filled driving at an economical price.

Everywhere you look, Bobcat wagons say first class—in room, style and comfort. Fresh styling includes a front end that's set off by a vertical textured grille.

Inside, body-contoured, high-back front bucket seats upholstered in durable vinyl or stylish cloth seating surfaces with vinyl bolsters. Plush cut-pile carpeting throughout the interior and cargo area is standard. There's plenty of head, shoulder and leg room and a generous amount of luggage space that makes both Bobcat wagons convenient when you're on the go.

And when it comes to hard work, both Bobcat "SC" Villager and Bobcat wagon carry a lot. Cargo space is over 57 cubic feet and almost 6 feet long. Dual

ball-joint front suspension and stagger-mounted rear shock absorbers team with rack-and-pinion steering for ease of handling, cornering and parking. Front disc and self-adjusting rear drum brakes are standard.

This year, Bobcat standard and optional engines have been refined to give

you significant fuel economy improvement as well as better driveability in terms of easier starting, better stop-and-go response and smoother acceleration.

In addition, there are optional engines that run on lower-priced regular gasoline that's readily available anywhere. Ask your Mercury dealer for details.

Standard features on the Bobcat "SC" Villager and Bobcat Wagon: 2.3 litre OHC 4 cyl. engine • Four-speed manual transmission • Front disc brakes • BSW bias-ply tires • High-back bucket seats • Rear liftgate with fixed glass and 2-stage counter-balanced supports • Generous sound insulation • Solid-state ignition • Air-Blending Heater • "Liftgate Ajar" warning system • Hinged quarter windows • Rack-and-pinion steering • Front stabilizer bar • Courtesy light switches • Cut-pile carpeting • Instrument panel mini-console • Wheelcovers* • Rosewood woodtone vinyl exterior paneling* • Ford Motor Company Safety Design Features • *Villager only.

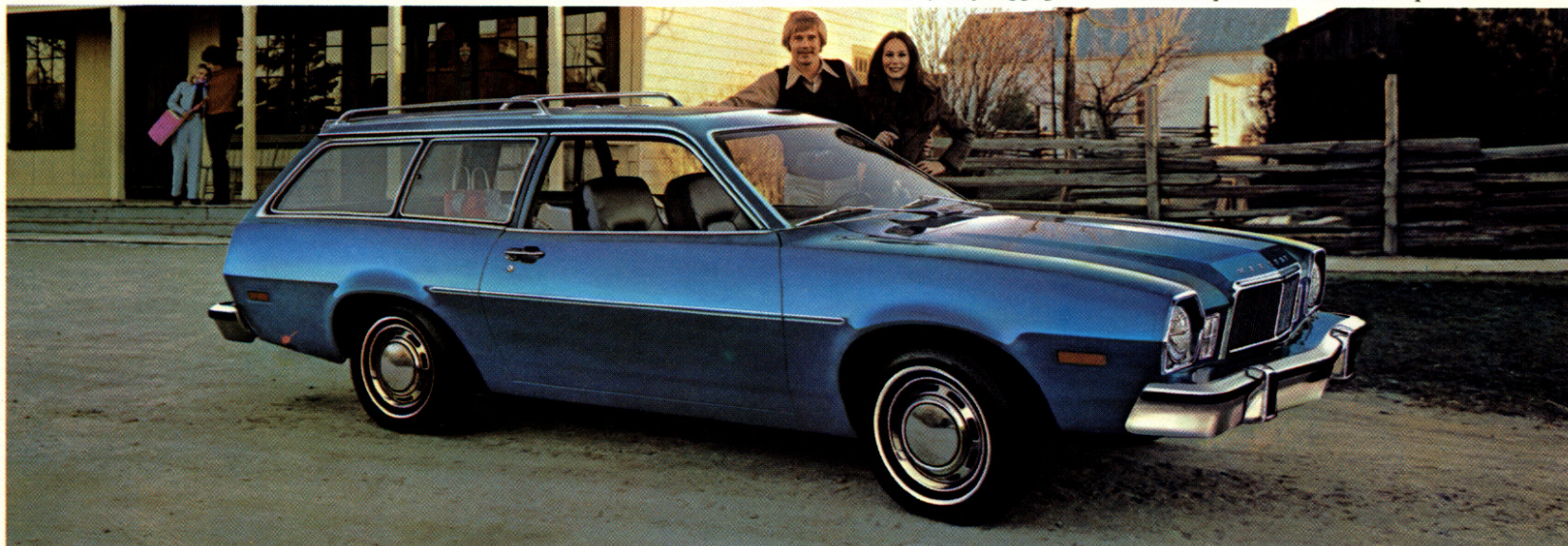


Above, Mercury Bobcat Wagon optional Deluxe Interior Trim, shown in tutone blue.



Above, Mercury Bobcat "SC" Villager Wagon with optional roof luggage rack, Styled Steel Wheels, Deluxe Interior Trim and Bumper Protection Group.

Below, Mercury Bobcat Wagon with optional bodyside protection moulding, wheel covers, roof luggage rack and Bumper Protection Group.



1976 Mercury Wagons Specifications

Mercury Wagons famous 3-way doorgate.



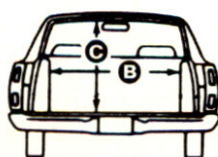
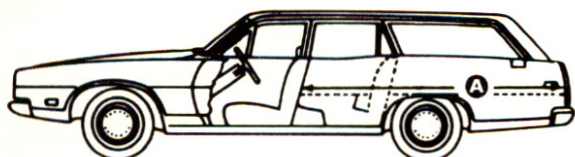
The three-way doorgate opens as a door, with window up or down. Optional rear-facing third seat on Montego wagons gives additional seating for two passengers.



The three-way doorgate affords extra platform length when opened as a tailgate. It facilitates loading and unloading, even 4' x 8' panels.



Optional dual centre-facing rear seats and foldaway recreation table (available on Marquis and Meteor wagons) provide a convenient play/work area.



Specifications

	Marquis	Meteor	Montego	Bobcat
Wheelbase	121.0"	121.0"	118.0"	94.8"
Overall length	228.3"	228.3"	223.2"	178.8"
Overall height	56.9"	56.9"	54.9"	52.0"
Overall width	79.8"	79.8"	79.6"	69.7"
Track - front	64.1"	64.1"	63.4"	55.0"
- rear	64.3"	64.3"	63.1"	55.8"
Maximum Floor Length (doorgate closed)	92.3"	92.3"	87.2"	69.1"
Floor width (between wheel housings)	48.7"	48.7"	48.2"	42.5"
Height at rear opening	29.0"	29.0"	28.8"	28.0"
Cargo volume index (cubic feet)	94.6	94.6	84.9	57.6

Powertrain Combinations

	Marquis	Meteor	Montego	Bobcat
2300 CC 4 speed manual	N/A	N/A	N/A	STD*
2300 CC Select-Shift Automatic	N/A	N/A	N/A	OPT*
2800 CC V6 Select-Shift Automatic	N/A	N/A	N/A	OPT
351 2V V8 Select-Shift Automatic	N/A	N/A	STD*	N/A
400 2V V8 Select-Shift Automatic	STD*	STD*	OPT*	N/A
460 4V V8 Select-Shift Automatic	OPT*	OPT*	N/A	N/A

*Powertrain is also available with an engine that uses regular (leaded) fuel.

Mercury Wagon options: • Deluxe cargo area trim • Lockable side-storage compartment • Luggage carrier • Luggage carrier with air deflector • Dual-facing rear seats •

Recreation table • Power rear window • Rear-facing third seat • Heavy duty suspension • Manual load adjusters • Trailer-towing

packages • Trailer-hitch equalizer platform • Power seats • Extended range fuel tank • Security Lock Group.

Motorcraft 



REPLACEMENT PARTS — For continued top performance specify genuine Motorcraft parts and Auto-lite Spark Plugs whenever they need replacement.

FUEL WARNING: Unless you have selected an optional engine that is designed to use regular gasoline (leaded), all 1976 Mercury Station Wagon engines require **UNLEADED FUEL ONLY**. The use of leaded fuel in these engines can damage the catalytic converter and affects other emission control components.

Illustrations and information presented were correct when approved for printing. Ford Motor Company of Canada, Limited reserves the right to discontinue or change at any time, specifications or design without incurring obligations.

Some features shown or described are optional at extra cost. Most options are offered on all models. Some options are required in combination with other options. Availability of some models and features described may be subject to a slight delay. Always consult your Mercury Dealer for the latest, most complete information on models, features, prices and availability.

MERCURY



Litho in Canada 3/76

1976 Bobcat "SC" Villager, Bobcat Wagon

The 1976 Bobcat "SC" Villager Wagon and the Bobcat Station Wagon are a lot of cat for a little scratch. These popular little critters are stronger and better looking than ever with a proven record of durability, comfort, and fun-filled driving at an economical price.

Everywhere you look, Bobcat wagons say first class—in room, style and comfort. Fresh styling includes a front end that's set off by a vertical textured grille.

Inside, body-contoured, high-back front bucket seats upholstered in durable vinyl or stylish cloth seating surfaces with vinyl bolsters. Plush cut-pile carpeting throughout the interior and cargo area is standard. There's plenty of head, shoulder and leg room and a generous amount of luggage space that makes both Bobcat wagons convenient when you're on the go.

And when it comes to hard work, both Bobcat "SC" Villager and Bobcat wagon carry a lot. Cargo space is over 57 cubic feet and almost 6 feet long. Dual ball-joint front suspension and stagger-mounted rear shock absorbers team with rack-and-pinion steering for ease of handling, cornering and parking. Front disc and self-adjusting rear drum brakes are standard.

This year, Bobcat standard and optional engines have been refined to give you significant fuel economy improvement as well as better driveability in terms of easier starting, better stop-and-go response and smoother acceleration.

In addition, there are optional engines that run on lower-priced regular gasoline that's readily available anywhere. Ask your Mercury dealer for details.

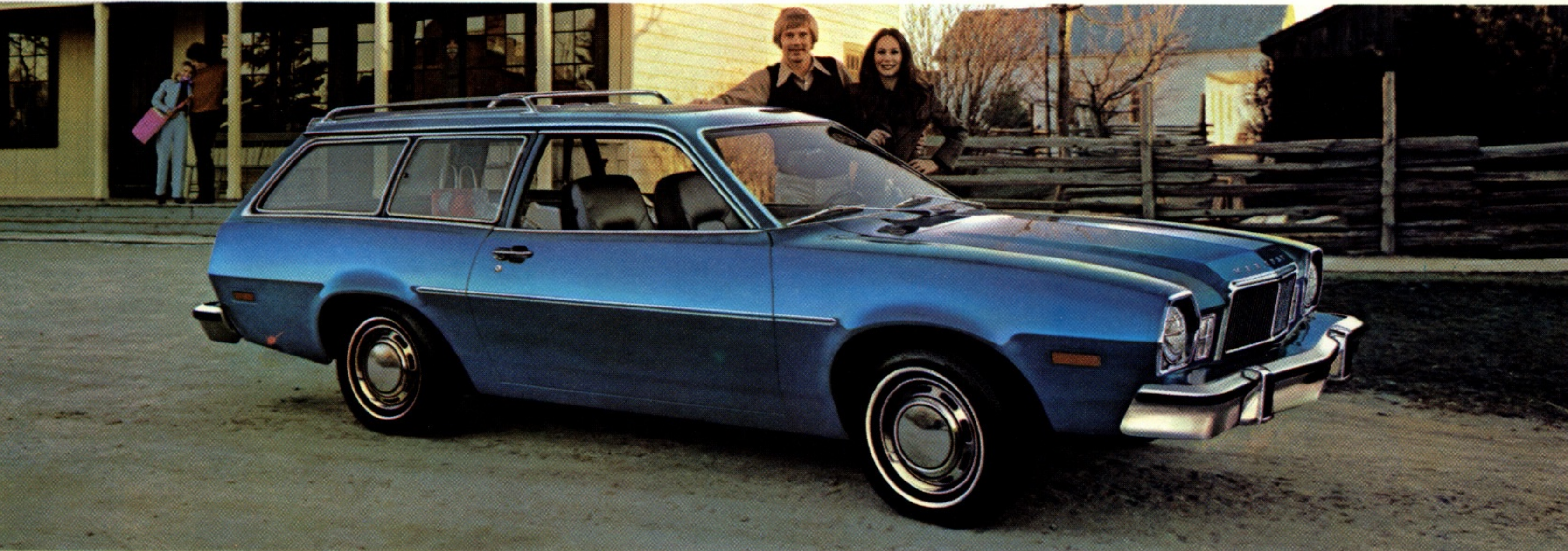


Above, Mercury Bobcat Wagon optional Deluxe Interior Trim, shown in tutone blue.



Above, Mercury Bobcat "SC" Villager Wagon with optional roof luggage rack, Styled Steel Wheels, Deluxe Interior Trim and Bumper Protection Group.

Below, Mercury Bobcat Wagon with optional bodyside protection moulding, wheel covers, roof luggage rack and Bumper Protection Group.



1976 Mercury Wagons Specifications

Mercury Wagons famous 3-way doorgate.



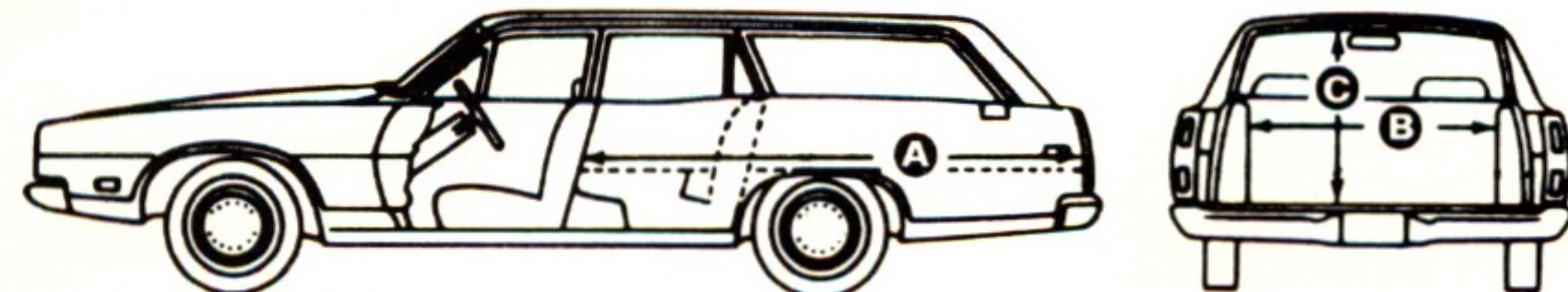
The three-way doorgate opens as a door, with window up or down. Optional rear-facing third seat on Montego wagons gives additional seating for two passengers.



The three-way doorgate affords extra platform length when opened as a tailgate. It facilitates loading and unloading, even 4' x 8' panels.



Optional dual centre-facing rear seats and foldaway recreation table (available on Marquis and Meteor wagons) provide a convenient play/work area.



Specifications

	Marquis	Meteor	Montego	Bobcat
Wheelbase	121.0"	121.0"	118.0"	94.8"
Overall length	228.3"	228.3"	223.2"	178.8"
Overall height	56.9"	56.9"	54.9"	52.0"
Overall width	79.8"	79.8"	79.6"	69.7"
Track - front	64.1"	64.1"	63.4"	55.0"
Track - rear	64.3"	64.3"	63.1"	55.8"
Maximum Floor Length (doorgate closed)	92.3"	92.3"	87.2"	69.1"
Floor width (between wheel housings)	48.7"	48.7"	48.2"	42.5"
Height at rear opening	29.0"	29.0"	28.8"	28.0"
Cargo volume index (cubic feet)	94.6	94.6	84.9	57.6

Powertrain Combinations

	Marquis	Meteor	Montego	Bobcat
2300 CC 4 speed manual	N/A	N/A	N/A	STD*
2300 CC Select-Shift Automatic	N/A	N/A	N/A	OPT*
2800 CC V6 Select-Shift Automatic	N/A	N/A	N/A	OPT
351 2V V8 Select-Shift Automatic	N/A	N/A	STD*	N/A
400 2V V8 Select-Shift Automatic	STD*	STD*	OPT*	N/A
460 4V V8 Select-Shift Automatic	OPT*	OPT*	N/A	N/A

*Powertrain is also available with an engine that uses regular (leaded) fuel.

Mercury Wagon options: • Deluxe cargo area trim • Lockable side-storage compartment • Luggage carrier • Luggage carrier with air deflector • Dual-facing rear seats • Recreation table • Power rear window • Rear-facing third seat • Heavy duty suspension • Manual load adjusters • Trailer-towing packages • Trailer-hitch equalizer platform • Power seats • Extended range fuel tank • Security Lock Group.



REPLACEMENT PARTS — For continued top performance specify genuine Motorcraft parts and Autolite Spark Plugs whenever they need replacement.

FUEL WARNING: Unless you have selected an optional engine that is designed to use regular gasoline (leaded), all 1976 Mercury Station Wagon engines require UNLEADED FUEL ONLY. The use of leaded fuel in these engines can damage the catalytic converter and affects other emission control components.

Illustrations and information presented were correct when approved for printing. Ford Motor Company of Canada, Limited reserves the right to discontinue or change at any time, specifications or design without incurring obligations.

MERCURY

Some features shown or described are optional at extra cost. Most options are offered on all models. Some options are required in combination with other options. Availability of some models and features described may be subject to a slight delay. Always consult your Mercury Dealer for the latest, most complete information on models, features, prices and availability.



Litho in Canada 3/76

Mercury Station Wagons 1976

Marquis • Meteor • Montego • Bobcat

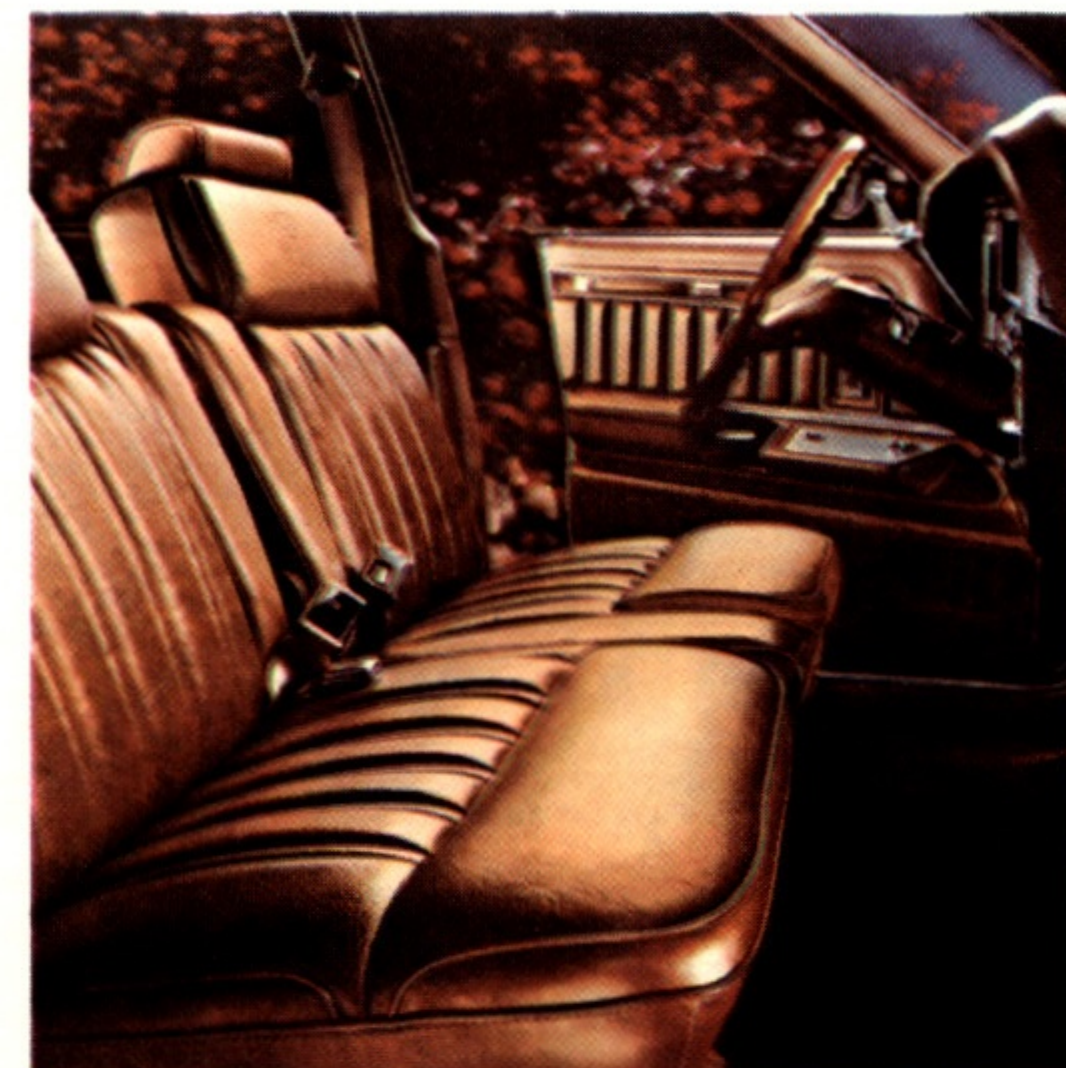


1976 Colony Park. Marquis.

Marquis Colony Park and Marquis are Mercury's roomiest station wagons and they have consistently outsold other wagons in their price class. Colony Park, our most luxurious, beautifully enhances the Mercury ride heritage with its smooth, quiet way of going and its handling ease. The Colony Park blends a rich interior, elegant standard appointments and distinctive styling with the versatility of a full-cargo station wagon. Standard luxuries are many, from electric clock and deep shag carpeting to deluxe steering wheel and woodtone vinyl exterior paneling.

Among features you'll appreciate on Colony Park and Marquis is the lockable under the floor storage compartment in the rear. Valuables can be stowed out of sight while your car is parked. Additional lockable cargo space is available with the optional side storage compartment. You'll also find the standard spare tire extractor a welcome convenience. Many convenience options are also available, ranging from luggage rack with air deflector (which aids in keeping the rear window clean), air conditioning, to anti-theft alarm system and rear compartment recreation table.

For the ultimate in station wagon luxury, you may specify the optional Grand Marquis interior for your Colony Park. This option is exclusive to Colony Park and includes genuine leather upholstery in the Grand Marquis sew-style, in your choice of blue, red, green and tutone tan/saddle, a dome/map reading lamp, and luxury steering wheel. Requires optional Twin Comfort Lounge Seats.



Colony Park interior with optional Twin Comfort Lounge Seats.

Standard features on Marquis Station Wagon: 400-2V V8 engine • Select-Shift automatic transmission • Solid-state ignition • Front bumper guards • Steel-belted radial tires • 3-way doorgate • Power rear window • Power steering • Power front disc brakes • Electric rear window defroster • Power ventilation system • Deluxe wheel covers • Spare tire extractor • Ford Motor Company Safety Design Features.

Additional standard features on Colony Park: Electric clock • Deluxe steering wheel • Flight bench seat with centre armrest • Left-hand remote control mirror • Rosewood woodtone vinyl paneling on bodysides and doorgate • Deep shag cut-pile carpeting • Door pull straps • Brougham wheel covers • Deluxe colour-keyed seat and shoulder belts • Rear seat centre folding armrest • Courtesy lighting.

Cover illustration: Foreground—Bobcat "SC" Villager Wagon. Background—Mercury Colony Park Wagon.

Mercury Colony Park Station Wagon with the Grand Marquis luxury interior option.

1976 Meteor Montcalm. Rideau 500.

1976 Mercury Meteor station wagons offer solid, sensible value at affordable prices.

The exterior styling of these full-size wagons is impressive, with a look that's unmistakably Mercury.

Inside, there's a comfortable, big car feeling with room for six people and loads of luggage space. Meteor wagons are engineered for good operating efficiency and economy. They have a superbly smooth and quiet ride thanks to Meteor's long 121 inch wheelbase, radial tuned suspension, and generous use of sound insulating materials. Meteor is built solid from the road up—it has separate/body frame construction, with the body mounted to a strong 5 cross-member perimeter frame. There's extra protection from steel guard door rails and double-panelled roof.

There are two models to choose from—the finely appointed Montcalm and the Rideau 500. Both have Ford's famous 3-way doorgate, with a power window, standard.

Both have large, easy to load cargo areas. It's a cavernous 94.6 cubic feet. The floor area is large enough to take a

4' x 8' panel lying flat. But there's still more to come, because under the floor is another 9.1 cubic feet of cargo space that can be locked so you can keep valuables safe.

This year, Meteor wagons, like all Mercury wagons have standard and optional engines that have been refined to



Above, the Montcalm standard all-vinyl interior available in green, blue, gold, and saddle.

give you significant fuel economy improvement as well as better driveability in terms of easier starting, better stop-and-go response and smoother acceleration. In addition, there are optional engines that run on lower-priced regular gasoline that's readily available anywhere. Ask your dealer for details.

Standard features on the Rideau 500 and Montcalm station wagons: 400-2V V8 engine • Select-Shift automatic transmission • Steel-belted radial tires • 3-way doorgate • Solid-state ignition • Power front disc brakes • Power steering • Power rear window • Energy absorbing bumpers • 3 point restraint system • Concealed windshield wipers • Spare tire extractor • Electric rear window defroster • Power ventilation • All-vinyl seat trim • Automatic parking brake release • 100% nylon carpeting • Ford Motor Company Safety Design Features.

Foreground: Meteor Montcalm Station Wagon shown with optional luggage rack. Background: Rideau 500 Station Wagon with optional luggage rack.



1976 Montego MX Villager. MX.

You'll love the smooth, quiet ride of the Montego station wagons. They combine the high degree of luxury and convenience you expect from a Mercury with all the practicality and handling ease of a trim mid-size wagon.

Montego MX Villager is the more sophisticated, both in its refined design and in the luxury of its appointments. The look of natural cherry woodtone along body sides and back accentuates the elegant, sculptured styling. The fully appointed interior features a padded flight bench seat with centre armrest and deep cut-pile carpeting.

Montego MX, too, is a mid-size wagon that offers a surprisingly high level of comfort. Power steering, power brakes, Select-Shift automatic transmission, cut-pile carpeting and soft vinyl seating are but a few of many fine standard features. Designed to add a generous measure of pleasure to station wagon living for '76.

Standard features also include a spacious lockable storage compartment under the cargo floor, carpeted load floor and three-way doorgate. And you can

choose from a sizeable list of options to achieve almost any level of luxury. They range from a roof rack luggage carrier with adjustable cross bar to a rear facing third seat and remote control right- and left-hand racing mirrors.

This year, Montego standard and optional engines have been refined to give you significant fuel economy improvement as well as better driveability in terms of easier starting, better stop-and-go re-



Above, the standard Montego MX Villager flight bench seat with vinyl upholstery.

sponse and smoother acceleration. In addition, there are optional engines that run on lower-priced regular gasoline that's readily available anywhere. Ask your Mercury dealer for details.

Standard features on Montego MX Station Wagon: 351-2V V8 engine • Select-Shift automatic transmission • Solid-state ignition • Power front disc brakes • Power steering • 3-way doorgate • Steel-belted radial tires • Deluxe sound insulation • Impact resistant bumper system with front bumper guards • Cut-pile carpeting • Upper body paint stripes • Ford Motor Company Safety Design Features.

Additional standard features on Montego MX Villager: Power doorgate window • Dual-note horn • Deluxe steering wheel • Cherry woodtone vinyl paneling on bodysides and doorgate • Flight bench seat with folding centre armrest • Deluxe colour-keyed seat and shoulder belts • Deluxe wheel covers.

Below, the Montego MX Villager with optional luggage rack.

Shown inset: Mercury Montego MX Station Wagon.

