



1976
BONNEVILLE BROUGHAM
BONNEVILLE/CATALINA

Full-sized Pontiacs from the Wide-Track people.



BONNEVILLE BROUGHAM

Pontiac's most luxurious full-sized car.

When Pontiac designers and engineers set out to design and build the 1976 Bonneville Brougham, they had one thought in mind. Make it the best-looking, most elegantly appointed full-sized car Pontiac could offer.

The results are apparent.

They started right up front with a handsome new grille, dual rectangular headlamps and a stand-up hood ornament.

Then they added other nifty touches like monogrammed rear quarter windows.

After all, any car called Bonneville Brougham has to look the part.

And that goes for the interiors as well. Our designers kept them comfortable. And beautiful.

In front, the thick foam-padded seat stretches across nearly five feet. With a fold-down armrest in the middle.

It's all trimmed in soft velour or glove-like Morrokide. Your choice.



Bonneville Brougham 4-Door Hardtop Sedan.

The appointments are the kind you'd expect in a Bonneville Brougham. First cabin.

Power windows, 24-oz. cut-pile carpeting, pull straps on the doors, added acoustical insulation and an electric clock. How those Wide-Track people do think of your comfort.

That's evident in the ride, too.

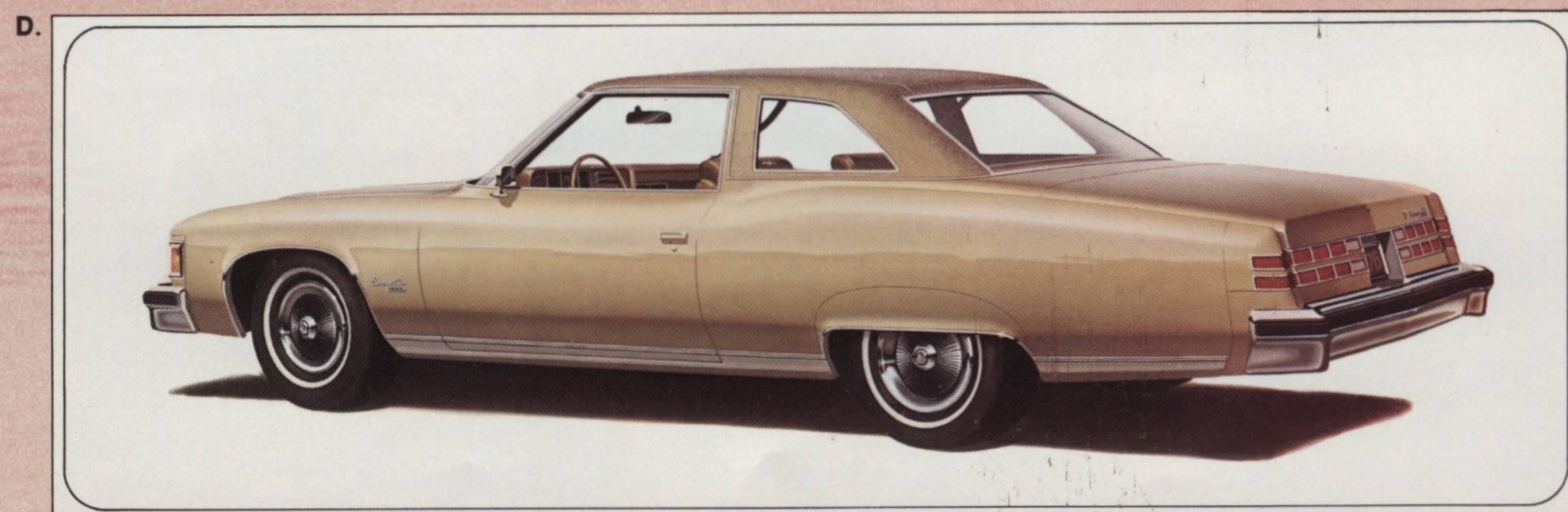
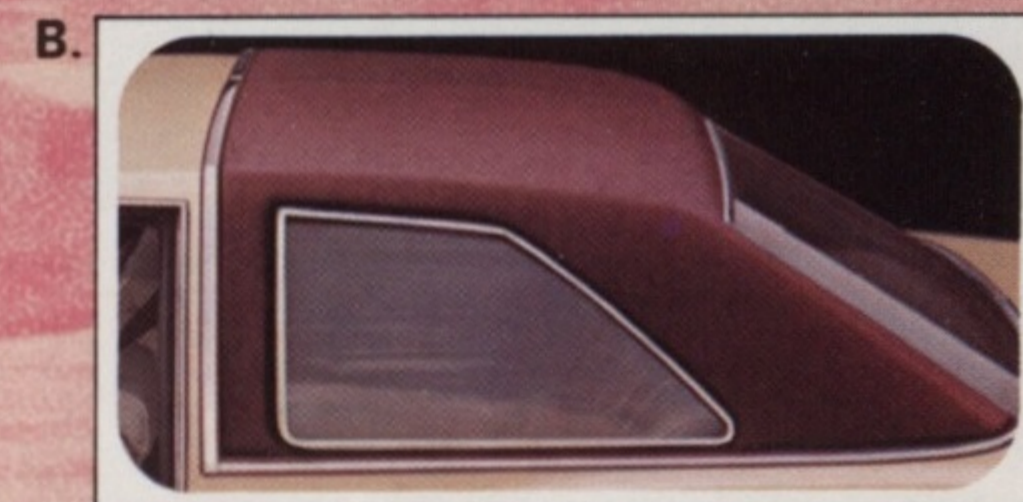
Our engineers came up with Pontiac's Radial Tuned Suspension. It's a combination of steel-belted radial tires, jounce restrictors, computer-selected springs and other ride/drive components. The result is a smooth, luxury car ride with crisp road response.

We can tell you about RTS on paper...but you'll appreciate it most on the road.

Other Bonneville Brougham standards include a 400-cu.-in. 4-bbl. V-8 teamed up to a Turbo Hydra-matic transmission. Variable-ratio power steering. And power front disc brakes.

1976 Bonneville Brougham. The new one from the Wide-Track people. It'll spoil you for other kinds of driving.

Shown on the cars on these pages are some of the options and accessories offered by Pontiac at extra cost.



- A. An invitation to added plushness—the available 60/40 full-width seat trimmed in elegant velour. Shown in mahogany—also available in black, blue and buckskin.
- B. A beautiful way to top off our top-of-the-line Bonneville Brougham. A padded landau roof is available on 2-door models.
- C. The standard all-Morrokide notchback seat is very luxurious. Shown in buckskin—also available in mahogany.
- D. Bonneville Brougham 2-Door Hardtop Coupe.
- E. Get a quick, accurate read-out of the time with the available digital clock.

E.

BONNEVILLE

The latest edition of the original Wide-Track.

When the Wide-Track people introduced the first Bonneville back in the late 1950's, they helped put to rest the theory that full-sized cars can't offer responsive maneuverability as well as room and luxury.

From the start, Bonneville began to establish a reputation for itself. Among enthusiasts. And among people who simply appreciate cars.

The car became known for automotive innovations and engineering integrity.

The 1976 Bonneville 2-Door Hardtop and 4-Door Hardtop Sedan are the latest expressions of that heritage.

Why beat around the bush? The Wide-Track people *know* how to build great road cars. Period.

Like its predecessors, the 1976 Bonneville's road savvy isn't left to chance.

Pontiac's Radial Tuned Suspension is a well thought out combination of ride and handling features.

It gives you a ride that is smooth not sluggish.



Bonneville 2-Door Hardtop Coupe. Shown with available landau roof.

Bonneville's styling has always drawn more than its share of appreciative nods. 1976 is no exception.

A sharply defined formal roof line, dual rectangular headlamps, wrap-around park and signal lamps and distinctive Bonneville identification create an impressive exterior.

The interior makes its own good impression. With seats of either handsome cloth or all-Morrokide.

Other interior niceties include a rosewood look to the instrument cluster, cut-pile carpeting and a custom cushion steering wheel.

Bonneville fans know from past experience they are never short-changed in the performance department. The 1976 models sport a 400-cu.-in. 2-bbl. V-8 as standard equipment.

Standard, too, are Turbo Hydramatic transmission, variable-ratio power steering and power front disc brakes.

But at Pontiac, performance stands for more than just power.

It also stands for efficiency.

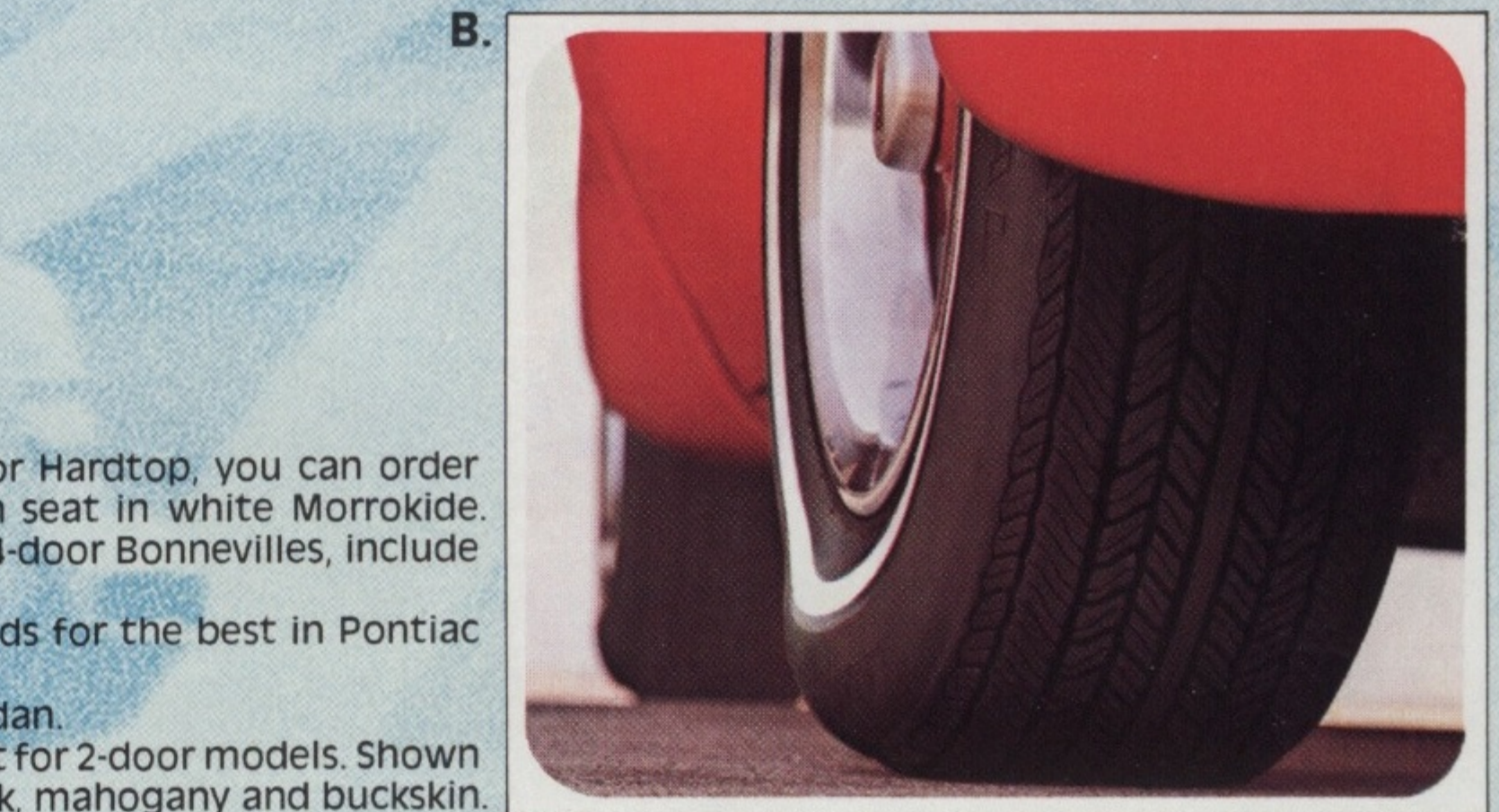
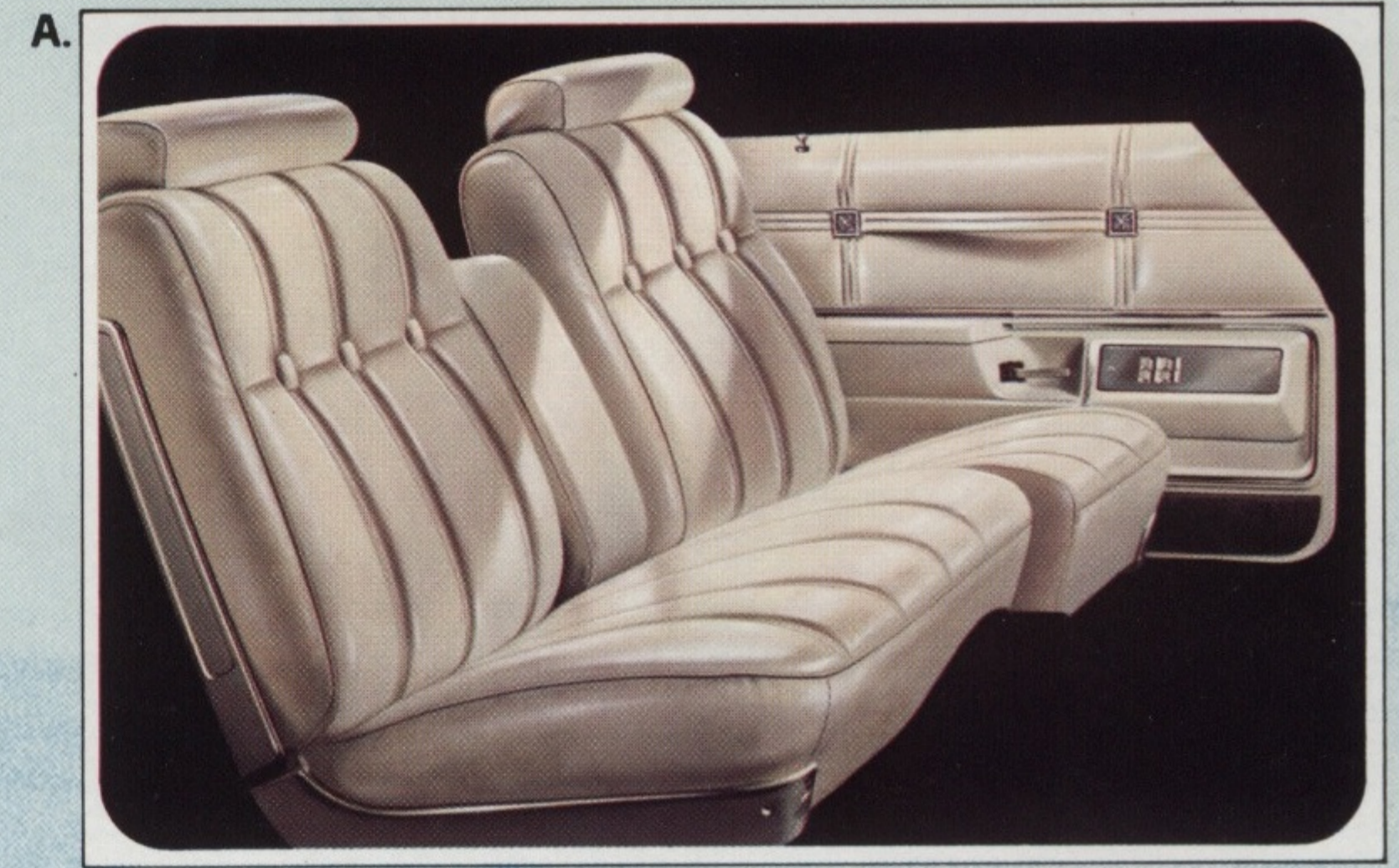
Bonneville lets you go up to 22,500 miles between scheduled spark plug changes... up to 7,500 miles between scheduled oil changes.

Steel-belted radial tires, High Energy Electronic Ignition and a catalytic converter are all standard.

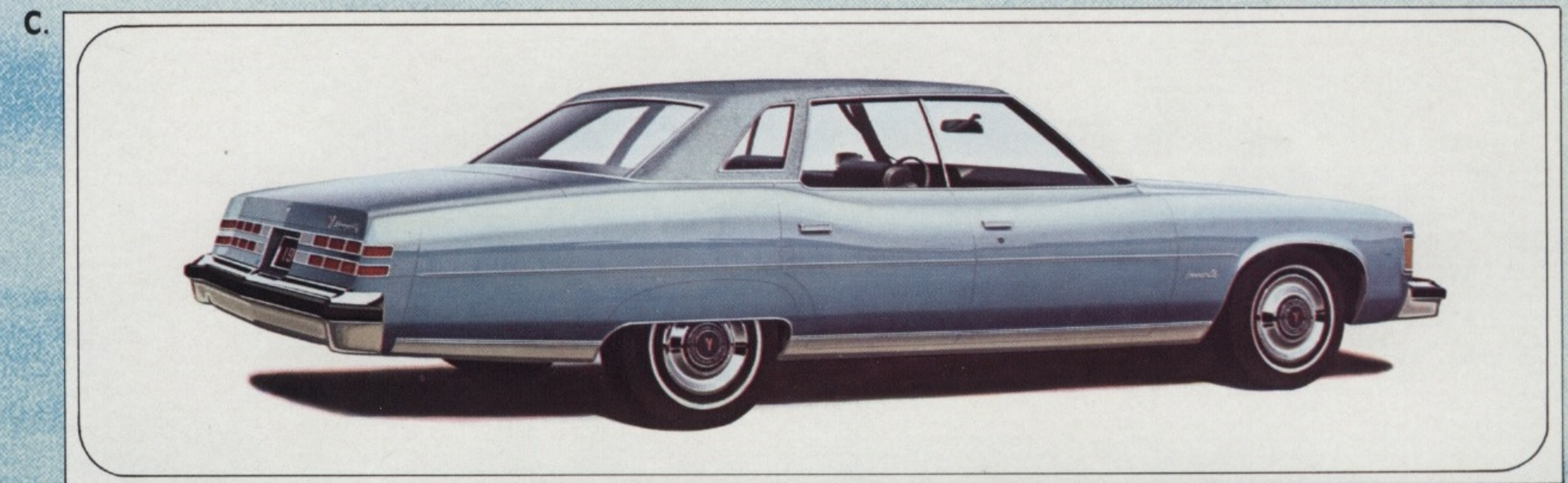
It's a combination that should help you conserve on operating expenses in the long run.

We thought we'd tell you that just in case you wanted to know what Bonneville's done for you lately.

You see, Bonneville doesn't have to live off its past reputation. The 1976 edition makes it on its own.



A. If you buy a Bonneville 2-Door Hardtop, you can order the available 60/40 full-width seat in white Morrokide. Other colors, for both 2- and 4-door Bonneville's, include blue, buckskin and mahogany.
B. Radial Tuned Suspension stands for the best in Pontiac ride.
C. Bonneville 4-Door Hardtop Sedan.
D. Standard cloth notchback seat for 2-door models. Shown in blue — also available in black, mahogany and buckskin.



CATALINA

Pontiac's lowest priced full-sized car.

When we say Catalina is Pontiac's lowest priced full-sized car, don't get the idea that it's some kind of bare-bones automobile. No way.

The new 1976 Catalina is loaded with standard equipment. Turbo Hydra-matic transmission. Variable-ratio power steering. Power front disc brakes.

And that's just for openers.

There's our Radial Tuned Suspension for that Pontiac kind of ride and road feel.

There's also our High Energy Electronic Ignition and catalytic converter for long intervals between scheduled maintenance.

But great engineering is only one aspect of the 1976 Catalina. Don't overlook Catalina's styling. Frankly, we think it would be impossible.

There's a newly styled grille. A trim hood. A pleasingly sculpted side treatment. And exterior moldings to protect and beautify.



Catalina 4-Door Sedan.

Room is another important Catalina consideration. Six adults can sit in comfort. Even those in the back seat can stretch out and relax. If you're traveling with tykes, they—and you—won't have to suffer from cabin fever. And the trunk is a whopper. Perfect for family jaunts.

If you want your Catalina 2-Door Hardtop or 4-door Sedan to have an even more distinguished exterior and interior look, consider the available Catalina Custom Trim Package.

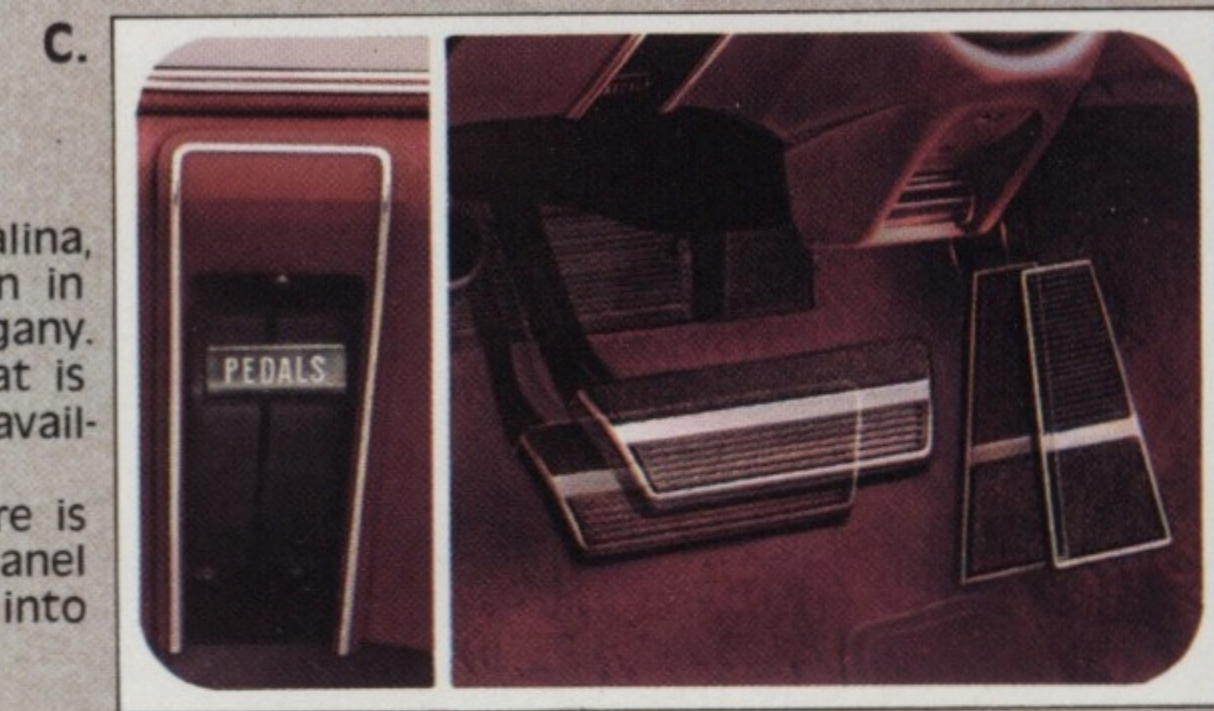
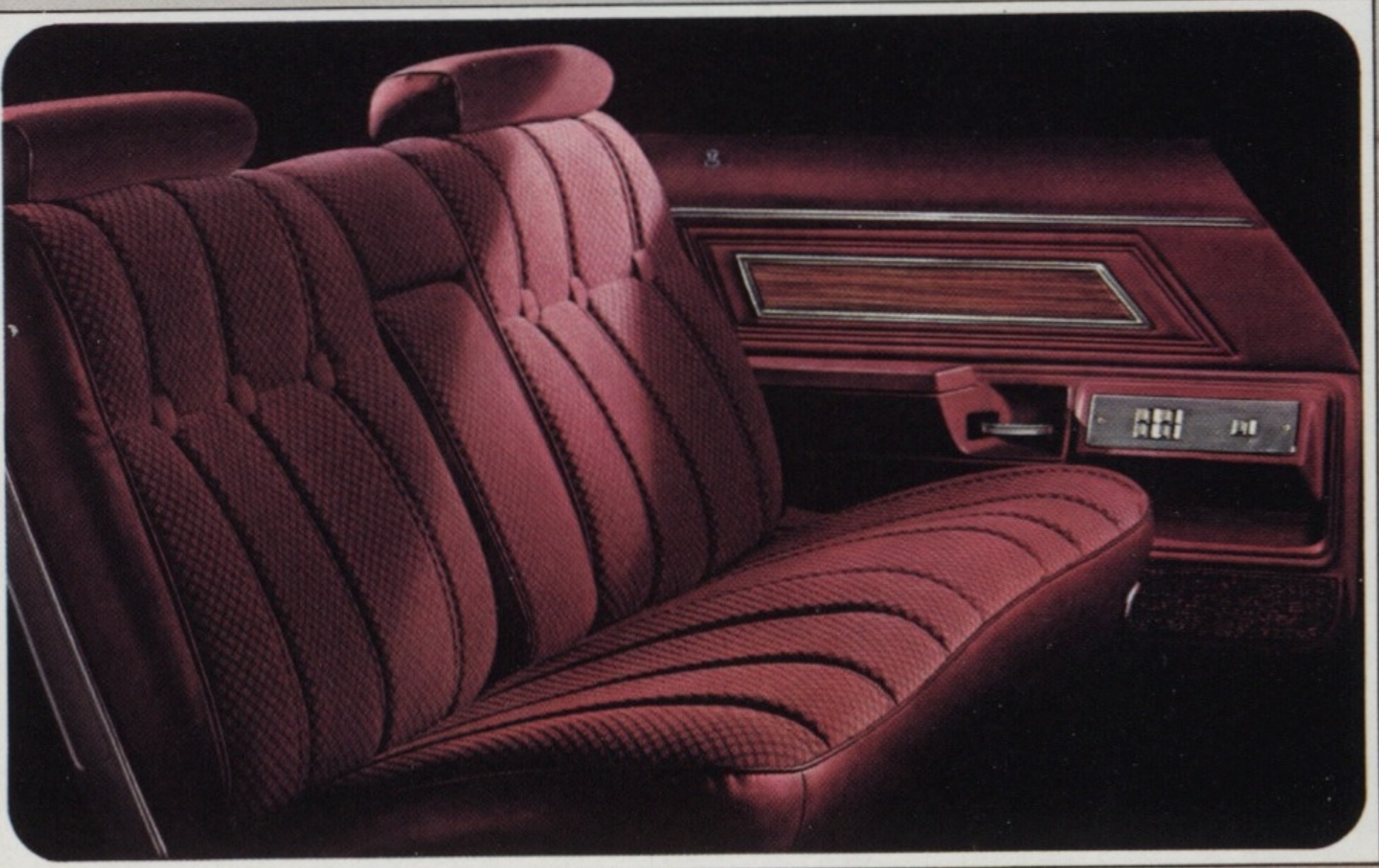
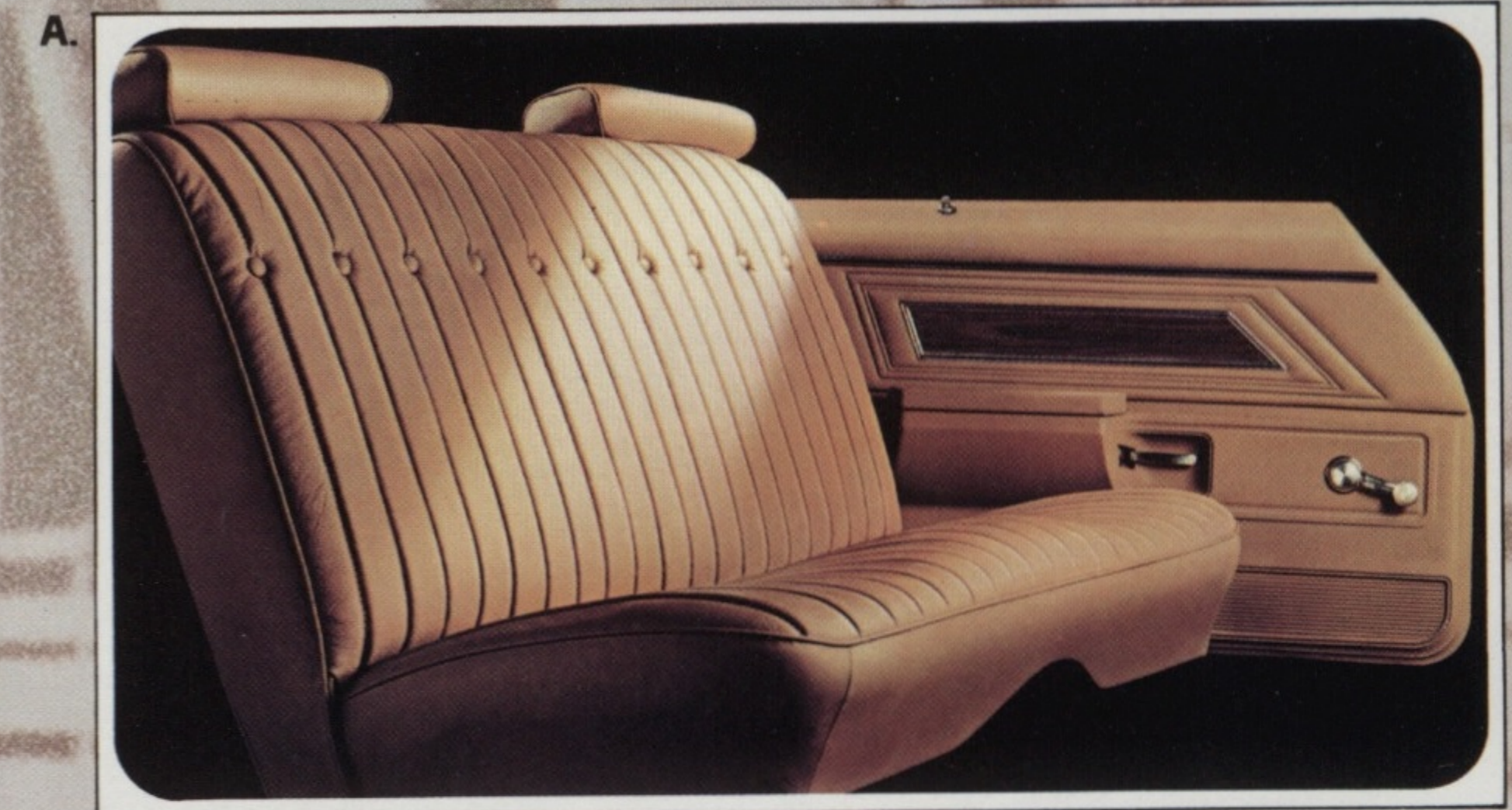
You'll get rectangular headlamps. Deluxe wheel covers. A custom cushion steering wheel. A full-width or 60/40 seat of handsome Morrokide or rich-looking cloth. And extra moldings for the sides and wheel openings.

The result is a top-of-the-line look at an affordable price.

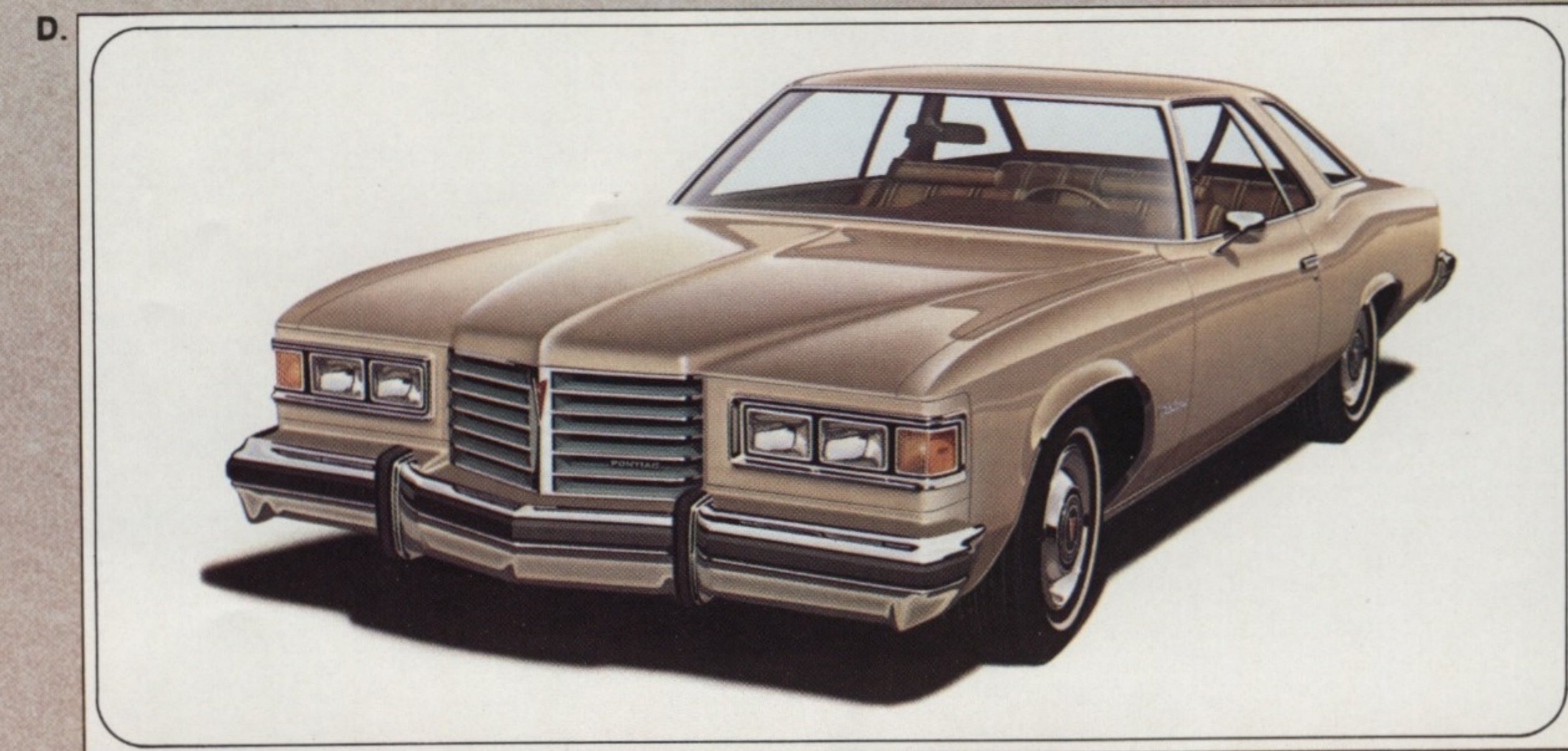
And, with any Catalina model, almost every comfort, convenience and appearance option you can think of is available. Automatic temperature air conditioning. Cordova top. Adjustable pedals. An AM/FM stereo radio with 8-track tape player and multiple speakers.

1976 Catalina and Catalina Custom. Just about all you could want in a car. And at a price that's very affordable.

So why settle for less when Pontiac prestige and Pontiac style are so easy to get?



- A. To give you an idea of the value you get in a Catalina, here is the standard full-width cloth seat. Shown in buckskin—also available in black, blue and mahogany.
- B. The available Catalina Custom full-width cloth seat is definitely a cut above. Shown in mahogany—also available in black, blue and buckskin.
- C. Adjustable pedals come in very handy when there is more than one driver. A control on the instrument panel moves the pedals up and down—then locks them into position. They're available on all full-sized Pontiacs.
- D. Catalina Custom 2-Door Hardtop.



FACTS AND FIGURES

MODELS

Bonneville Brougham: 2-Door Hardtop Coupe, 4-Door Hardtop Sedan.

Bonneville: 2-Door Hardtop Coupe, 4-Door Hardtop Sedan.

Catalina: 2-Door Hardtop Coupe, 4-Door Sedan.

POWER TEAMS

Standard engines:

Catalina and Bonneville: 400-cu.-in. 2-bbl. V-8.*

Bonneville Brougham: 400-cu.-in. 4-bbl. V-8.

Available engines:

Catalina and Bonneville: 400-cu.-in. 4-bbl. V-8.†

Catalina, Bonneville and Bonneville Brougham: 455-cu.-in. 4-bbl. V-8.

Standard transmission: Turbo Hydraulic.

*Not available in California.

†Standard in California.

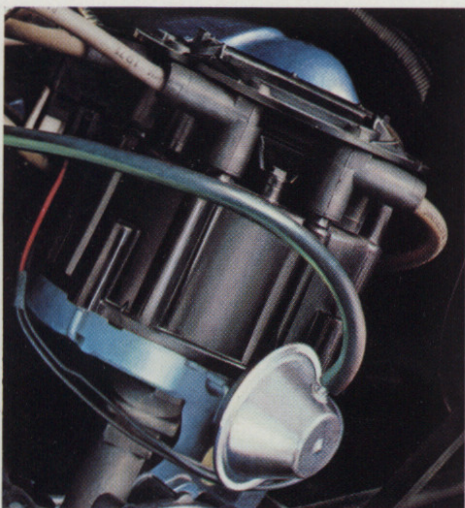
STANDARD INTERIOR FEATURES

Standard Catalina Features

Full-width seat with cloth and Morrokide trim. Full foam seats. Thick cut-pile carpeting. Deluxe steering wheel. High-low ventilation. Driver and passenger instrument panel ash trays (driver's lighted). Rosewood vinyl applique on instrument panel. Glove box lamp. Trunk mat. Inside hood latch release.

Special Bonneville Features

Full-width seat with fold-down armrest. Cloth and Morrokide or all-Morrokide fabrics. Carpeted lower door panels. Custom cushion steering wheel. Dome lamp switches on all doors. Pull straps on doors. Instrument panel courtesy lamp. Luggage compartment lamp.



High Energy Electronic Ignition helps give you quick starts in any kind of weather and also helps reduce maintenance costs.

Special Bonneville Brougham Features

Power windows. Velour or all-Morrokide trim. Trunk fully trimmed with a rich velour. Electric clock. Bonneville Brougham identification on instrument panel. Custom pedal trim plates. Right-hand ash tray lamp. Custom seat and shoulder belts. Added acoustical insulation.

STANDARD EXTERIOR FEATURES

Standard Catalina Features

New grille. Front and rear energy-absorbing bumper systems. Bumper rub strips. Hubcaps. Moldings on windshield, hood rear edge, rear window, quarter window. Rocker panel and roof drip moldings. Concealed wipers.

Special Bonneville Features

New grille. Rectangular headlamps. Wraparound park and signal lights. Double-level tail lamps. Rear wheel opening covers. Deluxe wheel covers. Body-colored inserts in door handles. Bonneville identification on grille, front fenders, rear deck lid. Wheel opening moldings. Wide rocker panel moldings with rear fender extensions.

Special Bonneville Brougham Features

Distinctive new grille. Stand-up hood ornament. Bonneville Brougham monogram on rear quarter windows. Deluxe wheel covers. Bonneville Brougham identification. Windowsill moldings. Hood wind-split molding. Formal Bonneville Brougham roof.

STANDARD CHASSIS FEATURES

Standard Catalina Features

Variable-ratio power steering. Power brakes with front discs/rear drums. Radial Tuned Suspension, which includes: firm shocks, HR78-15 GM specification steel-belted radial tires, front stabilizer bar, jounce restrictors, computer-selected springs. 4-wheel, coil-spring suspension. 2.41 axle ratio. Acoustical insulation. High Energy Electronic Ignition and catalytic converter, which requires unleaded fuel.

Special Bonneville and Bonneville Brougham Feature

Added acoustical insulation throughout.

DIMENSIONS (inches)	Hardtop Coupe	4-Door Hdt. Sedan	4-Door Sedan
Overall length	226.0	226.0	226.0
Overall width	79.6	79.6	79.6
Wheelbase	123.4	123.4	123.4
Track, front/rear	63.9/64.0	63.9/64.0	63.9/64.0
Head room, front/rear	37.9*/37.0*	38.6/37.3	38.8/37.6
Leg room, front/rear	42.6/35.8**	42.6/38.5	42.6/38.5
Shoulder room, front/rear	63.9/62.9	63.9/63.0	63.9/63.0
Hip room, front/rear	59.4/56.0	59.4/59.6	59.4/49.6

*Bonneville and Bonneville Brougham, 38.6/37.3.

**Bonneville and Bonneville Brougham, 38.5.

CAPACITIES

Fuel tank—25.8 gals.

Cooling system—21.6 qts.

Oil, less filter refill—5.0 qts.

POPULAR EQUIPMENT AVAILABLE

Digital clock. Controlled-cycle windshield wipers. Fuel economy gauge. Cordova top. Padded landau top (2-doors only, not available on Catalina). Cruise Control. Automatic temperature control air conditioning. Power windows (standard on Bonneville Brougham). Electric door locks. AM and AM/FM radios. 4-speaker stereo system with AM/FM stereo radio. Integral 8-track stereo tape player. Custom trim (Catalina only). Trunk lid release. Remote control outside rearview mirrors. Color-keyed vinyl body side moldings. Dome and reading lamp. 6-way power seat. Adjustable pedals—driver adjusts brake and accelerator to comfortable level. 60/40 split front seat. Added acoustical insulation (Catalina only).

PONTIAC SAFETY FEATURES

Occupant Protection

Seat belts with pushbutton buckles for all passenger positions. Two front combination seat and inertia reel shoulder belts for driver and right front passenger (with reminder light and buzzer). Energy-absorbing steering column. Passenger-guard door locks. Safety door latches and hinges. Folding seat-back latches. Energy-absorbing padded instrument panel and front seat-back tops. Contoured windshield header. Thick laminate windshield. Safety armrests. Safety steering wheel. Cargo-Guard. Contoured roof inner panel.

Accident Prevention

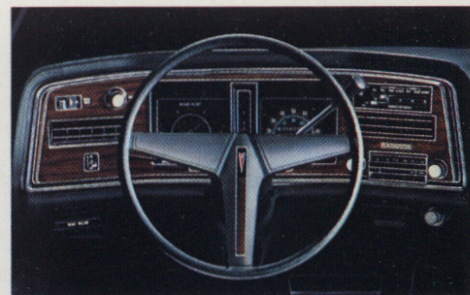
Side marker lights and reflectors. Parking lamps that illuminate with headlamps. Four-way hazard warning flasher. Backup lights. Lane-change feature in direction signal control. Windshield defrosters, washers and dual-speed wipers. Wide-view inside day/night mirror (vinyl-edged, shatter-resistant glass and deflecting support). Outside rearview mirror. Dual master cylinder brake system with warning light. Starter Safety Switch. Dual-action safety hood latches.

Anti-Theft

Anti-theft ignition key reminder buzzer. Anti-theft steering column lock.

Shown on the cars and described in this catalog are some of the many options and accessories offered by Pontiac. They're available at extra cost and well worth it in driving comfort and convenience. Pontiac Motor Division of General Motors Corporation reserves the right to make changes at any time, without notice, in colors, equipment, specifications, prices and models—and also to discontinue models. The right is also reserved to change any specifications, parts or equipment at any time without incurring any obligation to equip same on cars built prior to date of such change.

Pontiac Motor Division, General Motors Corporation, One Pontiac Plaza, Pontiac, Michigan 48053.



Instrument panel shown with available fuel economy gauge. It could help you drive your Pontiac more efficiently.



Available automatic temperature control air conditioning with new economy setting.



Cruise Control is a great available option for the freeway. Maintains your desired speed for extra convenience.

