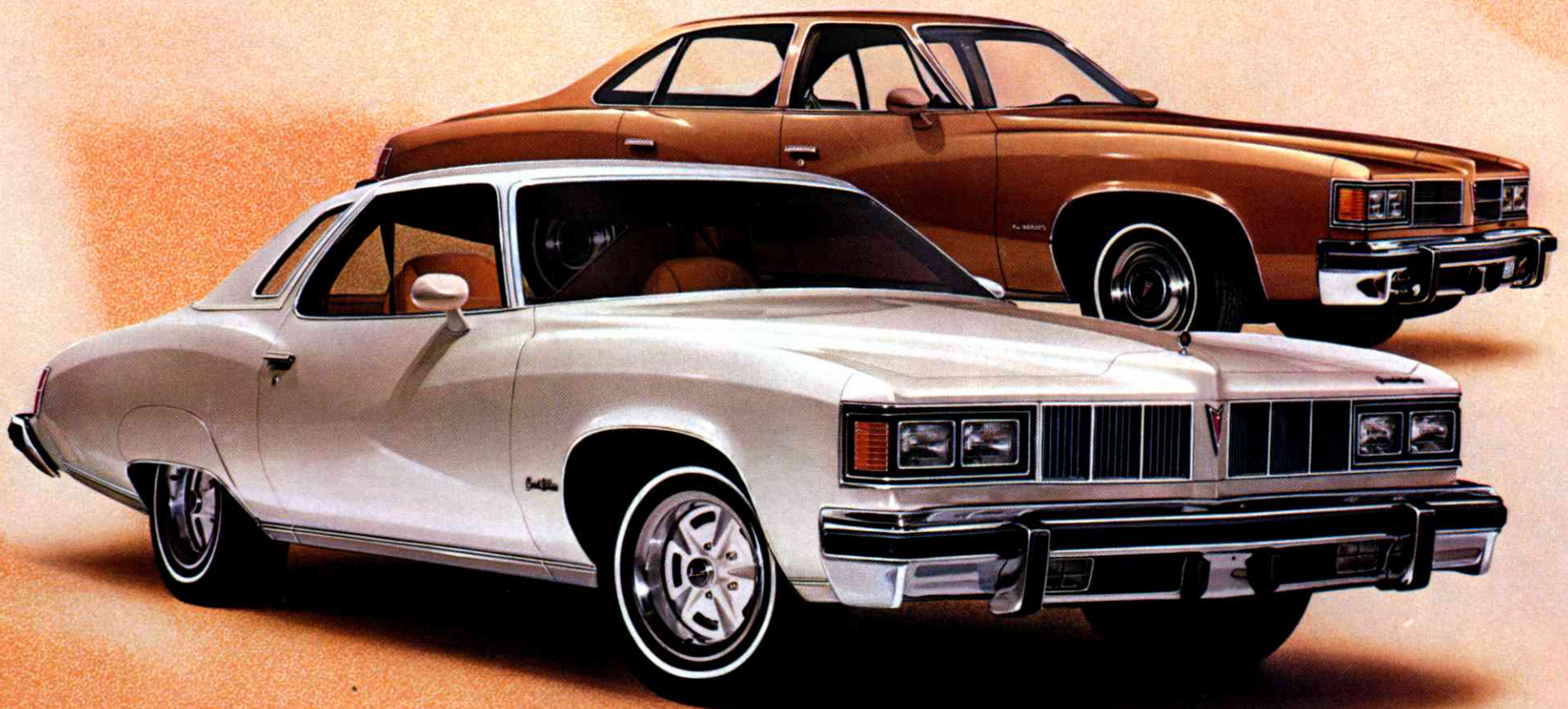




PONTIAC
The Mark of Great Cars.

**1976
GRAND LE MANS,
LE MANS SPORT COUPE,
LE MANS.**

Pontiac's complete lineup of mid-sized cars.



GRAND LEMANS.

Pontiac's most luxurious mid-sized car.

There's a new breed of car buyer in the marketplace this year. One who demands a blend of plush and practicality. And won't accept second-best in either.

It's for that person we've built the 1976 Grand LeMans.

Right off, you know it's a Pontiac. The look is unmistakable. But now it's been refined for even greater elegance.

There's a distinctive new segmented grille, flanked by dual rectangular headlamps. And complemented by new wraparound tail lamps, formal rear quarter windows and available new landau tops.

Grand LeMans elegance doesn't end with a stylish exterior. There's plenty more inside to set this Pontiac apart from the crowd. Like a choice of either a full-width notchback or contoured bucket seats. To complement other fine features. Like padded upper door panels and rosewood vinyl accents on the cockpit-like instrument panel. A custom cushion steering wheel with a convenient column-mounted dimmer switch. And an electric clock.



Grand LeMans 4-Door Hardtop Sedan.

But what about Grand LeMans' practical side? It begins with a dependable 250-cu.-in. Six under the hood. And a new two-stage choke system for smoother running during warm-up.

Or order any of five available V-8's. Including the small 260 V-8.

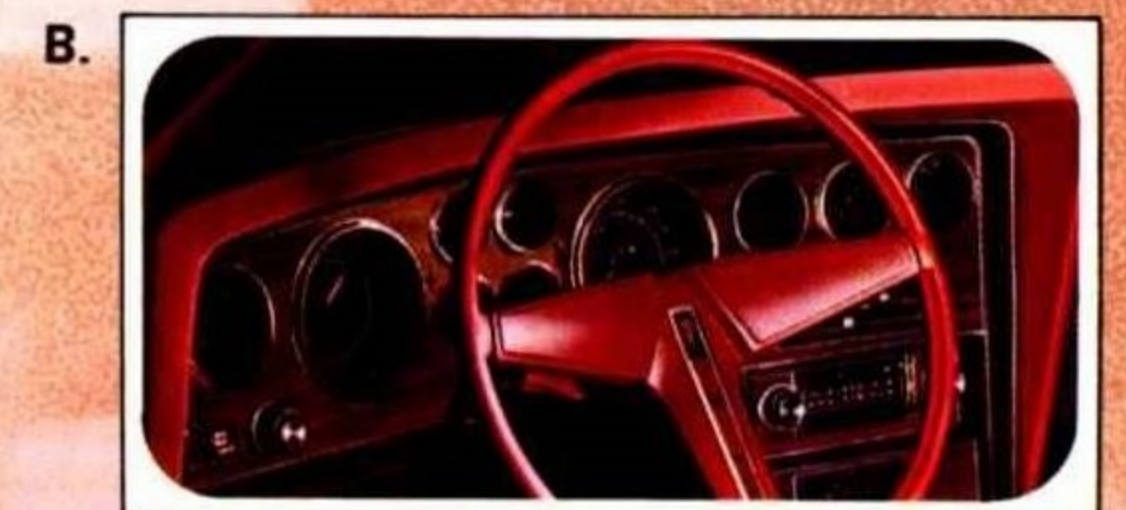
You'll have more time to enjoy driving your new Grand LeMans because you'll need less time for routine maintenance. Thanks to Pontiac's High Energy Electronic Ignition. It has no points or ignition condenser to replace. Which should help you cut operating costs as well.

To help smooth you through life's little bumps, Grand LeMans also gets Pontiac's Radial Tuned Suspension and steel-belted radial tires.

1976 Grand LeMans. It's either one of the most practical luxurious cars or one of the most luxurious practical cars Pontiac's ever built.

Either way, it still carries the name Pontiac, the mark of great cars.

Shown on the cars on these pages are some of the options and accessories offered by Pontiac at extra cost.



- A. Indulge yourself. Grand LeMans standard cloth and Morrokide notchback seat. Shown in firethorn—also available in blue and black.
- B. Ready for take-off? A cockpit-style instrument panel that tells you everything, including the time of day, is standard Grand LeMans fare. Shown with available rally gauge cluster.
- C. One for the pilot. One for the co-pilot. These cloth and Morrokide custom bucket seats are available on Grand LeMans.
- D. Grand LeMans 2-Door Hardtop Coupe.

LE MANS SPORT COUPE.

Pontiac's sporty mid-sized car.

Try to imagine a Pontiac LeMans lineup without a very sporty car in it. Next to impossible, right? Well, to tell the truth, we've been building a sporty LeMans for so long, we couldn't quite imagine it either.

Which should explain why we're so proud of our 1976 edition LeMans Sport Coupe. It's the latest in a long line of sporting mid-sized Pontiacs.

Up front, the look is new. With dual rectangular headlamps reminiscent of fine European road cars. The grille is clean, yet distinctively Pontiac.

In back, you'll find new wrap-around tail lamps. And just in case you're worried about folks mistaking your car for anything but a LeMans Sport Coupe, you can order Pontiac's exclusive louvered rear quarter window design at no extra charge.

Or choose the formal rear quarter window instead, if your idea of sporty follows along more traditional lines.



LeMans Sport Coupe 2-Door Hardtop Coupe.

Sure, the LeMans Sport Coupe's always been sporty looking. But it's always offered equipment to back it up, too. And 1976 is no exception.

There's an impressive list of available V-8's from which to order. Including the small 260 V-8.

Order it with the new 5-speed manual transmission in any bucket seat-equipped Sport Coupe. For lower rpm cruising at highway speeds.

Looking for more? Specify a 350 or 400 V-8. Notice how your reasons for owning a LeMans Sport Coupe keep getting stronger?

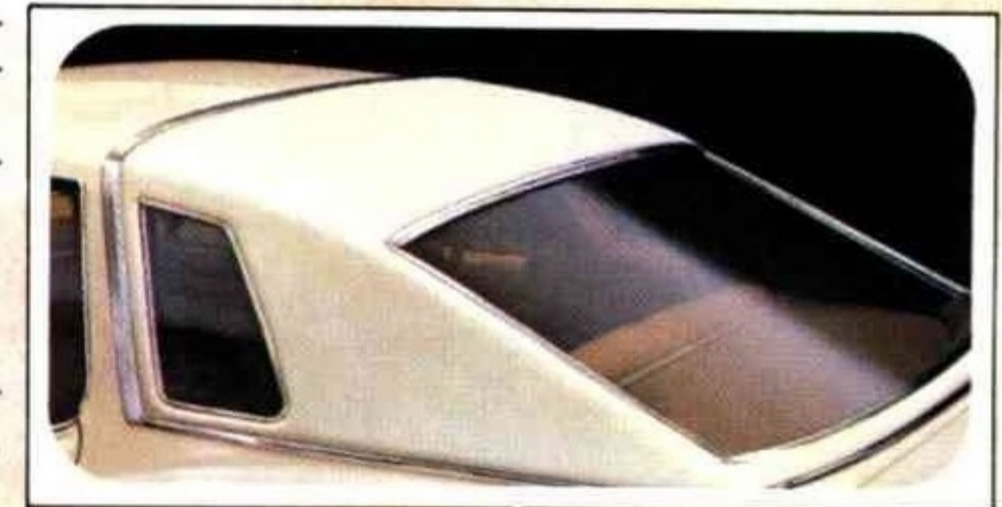
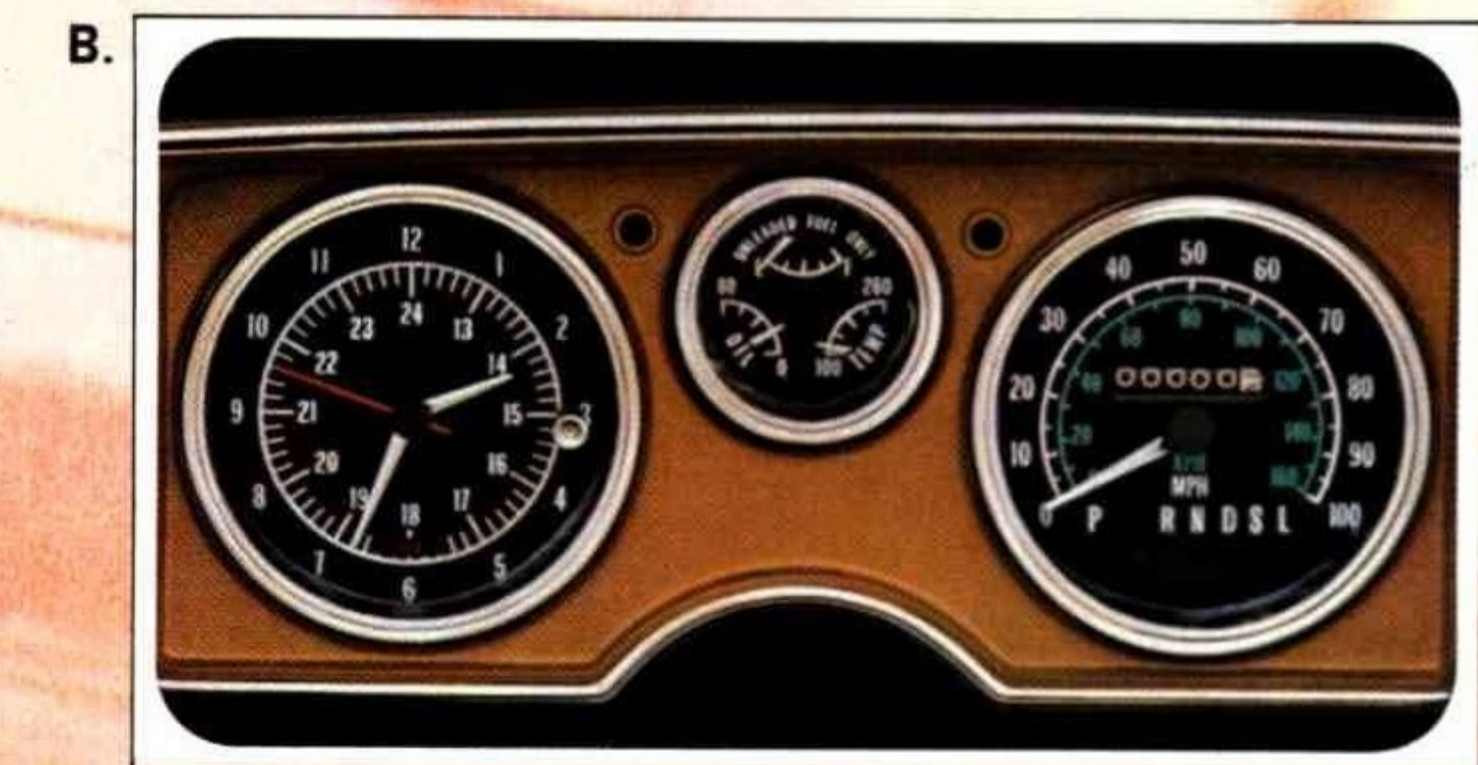
But don't decide yet. Not until you get acquainted with our 455 4-bbl. It's acquired quite a following in recent years.

And just to make sure LeMans Sport Coupe stays a tough act to follow, we've also given it a Radial Tuned Suspension with steel-belted radial tires. Front disc brakes. And variable-ratio power steering you can order.

This is one sporty car that won't nickel and dime you to death when it comes to routine maintenance. Pontiac's High Energy Electronic Ignition will help see to that.

Because there are no points or ignition condenser to replace, you should get long spark plug life. Outstanding cold-start performance. And low operating costs.

1976 LeMans Sport Coupe. Whether you like the sportiness of its looks or the sportiness of its moves, it's another great one from the Wide-Track people.



- A. Three up, two down. A flip of the fold-down center armrest converts LeMans Sport Coupe's standard all-Morrokide notchback seat from a full-width three-seater to a sporty two-seater. Shown in blue—also available in firethorn, buckskin and white.
- B. You won't miss a thing, thanks to fuel, oil pressure and temperature gauges and a rally clock. It's all part of Pontiac's available rally gauge cluster.
- C. What's a sporty car without a bucket seat or two? All-Morrokide buckets are standard in LeMans Sport Coupe. Shown in buckskin—also available in black, white, blue and firethorn.
- D. It's the tops! Landau, canopy, full vinyl and thickly padded landau (shown) are all available this year.

LE MANS.

Pontiac's lowest priced mid-sized car.

Don't get the idea that just because the 1976 LeMans is our lowest priced mid-sized car, we decided to treat it like a second-class citizen. No way.

Take LeMans' new styling, for instance. It's obviously not of the bargain basement variety. Its distinctive split grille, wraparound tail lamps and formal rear quarter windows are as classy as any you'll find on a Pontiac.

LeMans even gets dual rectangular headlamps, which until now have been reserved for only some of the most expensive top-of-the-line cars.

Some lower priced cars offer great promise on the outside, but disappointing appointments inside. Not LeMans.

You'll find comfortable full-width seats upholstered in textured cloth and Morrokide. And there's an even richer custom interior you can order on the 4-door.

Whichever interior you choose, you'll still get fine Pontiac touches like nylon-blend, cut-pile carpeting. New rosewood vinyl trim on the instrument panel. And a deluxe steering wheel.

The last place you'd expect Pontiac to cut corners is in the engineering department. So our '76 LeMans is powered by a rugged 6-cylinder engine linked up to a tough 3-speed manual transmission (Turbo Hydra-matic in California).

It rides on a Radial Tuned Suspension and steel-belted radial tires. It stops with front disc brakes.

It's been designed to help lower your operating costs by lengthening spark plug life and extending oil change intervals.

To top it all off, there's a two-stage choke system that's brand-new this year. For smooth running during warm-up. Busy bunch, those Pontiac engineers.

If you'd like to make a few improvements of your own, check LeMans' long list of available equipment.

On it you'll find such goodies as five V-8's. A Turbo Hydra-matic transmission. Variable-ratio power steering. Automatic temperature control. A sunroof for coupes. A Rally RTS Handling Package. And a lot more.

Because everybody has their own idea of what a new car should be.

1976 LeMans. It may be our lowest priced mid-sized car, but it still carries the name Pontiac, the mark of great cars.



- A. What do you want to know? Our panel has all the answers. LeMans' instrument panel, we mean. Shown with an available custom cushion steering wheel you can order.
- B. A lot of LeMans 4-door customers will go for this available all-Morrokide custom interior. Shown in blue—also available in buckskin and firethorn.
- C. When we call LeMans' standard cloth and Morrokide seat full-width, we mean full-width. Shown in blue—also available in black.
- D. LeMans 4-Door Hardtop Sedan.
- E. LeMans' High Energy Electronic Ignition. We put it there for improved ignition performance and reliability.



LeMans 2-Door Hardtop Coupe.

FACTS AND FIGURES

GRAND LeMANS, LeMANS SPORT COUPE AND LeMANS

MODELS

Grand LeMans: 2-Door Hardtop Coupe, 4-Door Hardtop Sedan.

LeMans Sport Coupe: 2-Door Hardtop Coupe.

LeMans: 2-Door Hardtop Coupe, 4-Door Hardtop Sedan.

POWER TEAMS

Standard engine:

250-cu.-in. 1-bbl. 6-cyl.

Available engines:

260-cu.-in. 2-bbl. V-8,*

350-cu.-in. 2-bbl. V-8,**

350-cu.-in. 4-bbl. V-8 (Calif. only),

400-cu.-in. 2-bbl. V-8,**

400-cu.-in. 4-bbl. V-8,

455-cu.-in. 4-bbl. V-8.

Standard transmission: 3-speed manual column shift.** Turbo Hydra-matic with Grand LeMans.

Available transmissions: Turbo Hydra-matic, 5-speed manual floor shift (only on LeMans Sport Coupe with 260 V-8 and bucket seats).**

*Available only with Turbo

Hydra-matic in California.

**Not available in California.

STANDARD INTERIOR FEATURES

Standard LeMans Features

Rosewood vinyl trim on instrument panel. Full-width cloth and vinyl seats. Deluxe steering wheel. High-low ventilation. Tilt-type, non-glare inside mirror. Nylon-blend, cut-pile carpeting. Trunk mat.

Special LeMans Sport Coupe Features

Choice of all-Morrokide full-width notchback seat with fold-down center armrest or Morrokide bucket seats. Rosewood vinyl trim on glove compartment.

Special Grand LeMans Features

Padded upper door panels. Carpeted lower door panels. Custom cushion steering wheel. Cockpit-style instrument panel. Column-mounted headlamp dimmer switch. Electric clock. Pull straps on all doors. Instrument panel assist strap. Custom pedal trim plates. Dome lamp switches on all doors. Ash tray and glove compartment lamps. Full-width front notchback seat or bucket seats.

STANDARD EXTERIOR FEATURES

Standard LeMans Features

Dual rectangular headlamps. New recessed front grille. New wraparound tail lamps. Front and rear bumpers with energy-absorbing mounting system. Formal rear quarter windows on 2-door. Concealed windshield wipers. Frameless door glass. Hubcaps. Dual horns. Bright moldings on windshield, rear quarter and rear windows. Roof drip moldings. Rocker panel moldings.

Special LeMans Sport Coupe Features

Choice of louvered or formal rear quarter windows. Distinctive tail lamps. Wheel opening and hood rear edge moldings. Body-colored door handle inserts.

Special Grand LeMans Features

Distinctive new segmented grille. Stand-up hood ornament. Deluxe wheel covers. Distinctive tail lamps. Body-colored door handle inserts.

STANDARD CHASSIS FEATURES

Radial Tuned Suspension including: FR78-15 GM specification steel-belted radial tires, front stabilizer bar, 4-wheel computer-selected coil springs and more. Perimeter-type frame. Front disc brakes. High Energy Electronic Ignition and a catalytic converter which requires unleaded fuel.

DIMENSIONS (inches)	2-Door	4-Door
Overall length	208.0	212.0
Overall width	77.4	77.4
Wheelbase	112.0	116.0
Track, front/rear	61.6/61.1	61.6/61.1
Head room, front/rear	37.4/36.5	38.1/36.9
Leg room, front/rear	42.5/32.9	42.5/37.0
Shoulder room, front/rear	59.6/57.9	59.6/58.9
Hip room, front/rear	54.8/52.7	54.7/57.8

CAPACITIES

Fuel tank—21.8 gals.

Cooling system—15.0 qts. (6-cyl.)

Oil, less filter refill—4.0 qts. (6-cyl.)

POPULAR EQUIPMENT AVAILABLE

Variable-ratio power steering. Power brakes. Fuel economy gauge. Full, canopy or landau vinyl top. Thickly padded landau top. Added acoustical insulation (std. on Grand LeMans). Stowaway spare tire. Automatic temperature control. Sunroof (on 2-door models). Rally RTS Handling Package including: GR70-15 white sidewall or white letter steel-

belted radial tires, specific front and rear stabilizer bars.

GRAND LeMANS, LeMANS SPORT COUPE AND LeMANS SAFETY FEATURES

Occupant Protection

Seat belts with pushbutton buckles for all passenger positions. Two front combination seat and inertia reel shoulder belts for driver and right front passenger (with reminder light and buzzer). Energy-absorbing steering column. Passenger-guard door locks. Safety door latches and hinges. Folding seat-back latches. Energy-absorbing padded instrument panel and front seat-back tops. Contoured windshield header. Thick-laminate windshield. Safety armrests. Safety steering wheel. Cargo-Guard. Contoured roof inner panel.

Accident Prevention

Side marker lights and reflectors. Parking lamps that illuminate with headlamps. Four-way hazard warning flasher. Backup lights. Lane-change feature in direction signal control. Windshield defrosters, washers and dual-speed wipers. Wide-view inside day/night mirror (vinyl-edged, shatter-resistant glass and deflecting support). Outside rearview mirror. Dual master cylinder brake system with warning light. Starter Safety Switch. Dual-action safety hood latch.

Anti-Theft

Anti-theft ignition key reminder buzzer. Anti-theft steering column lock.

Shown on the cars and described in this catalog are some of the many options and accessories offered by Pontiac. They're available at extra cost and well worth it in driving comfort and convenience. Pontiac Motor Division of General Motors Corporation reserves the right to make changes at any time, without notice, in colors, equipment, specifications, prices and models—and also to discontinue models. The right is also reserved to change any specifications, parts or equipment at any time without incurring any obligation to equip same on cars built prior to date of such change.

Pontiac Motor Division, General Motors Corporation, One Pontiac Plaza, Pontiac, Michigan 48053.



You've got the sun in the morning and the moon at night when you order a power-operated sunroof on any 2-door LeMans.



What makes LeMans so special to drive? Pontiac's Radial Tuned Suspension. Every LeMans suspension is specially tuned to standard steel-belted radial tires and includes a front stabilizer bar, computer-selected springs and more.



Keep your cool with automatic temperature control air conditioning. The economy settings will help keep your fuel consumption cool, too.



Cars and stripes, forever! Show your true colors by ordering your 2-door LeMans with the available over-the-roof striping.

