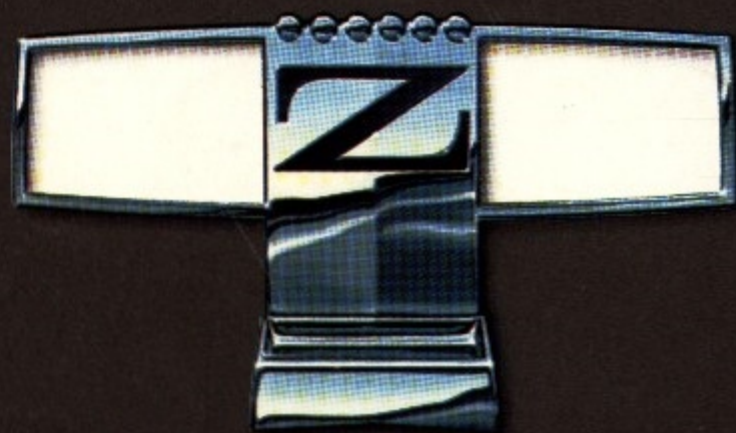

ZEPHYR



FOR 1981 FROM

MERCURY

ROOM, RIDE AND COMFORT FOR EVERYONE...

You can sum up the '81 Mercury Zephyr in one phrase: just right. It's just big enough, just small enough, to be... just right. You see it in the sleek exterior design. You feel it inside — with interiors that are not just roomy and comfortable, but have a tasteful elegance all their own. You experience it in the ride — not too hard, not too soft. And in the surprisingly tight handling of sports-type rack-and-pinion steering. You enjoy it in Zephyr's just-right power-to-weight ratio that imparts a feeling of nimble and satisfying performance.

Zephyr seats five comfortably (or six with optional bench seat) and comes in a variety of styles — two- and four-door sedans; the sporty, personal-size Zephyr Z-7 coupe; and station wagons that sport the largest cargo volume of any North-American-made wagon in their class. Choose also from four-, six-, and eight-cylinder engines.

Fun to drive. Eminently satisfying to own. A car whose many values belie its price. That's Zephyr for '81. Just right.

NOTE: Some items pictured in this catalog are optional.
Please see pages 12-15 for specific information regarding standard and optional equipment.

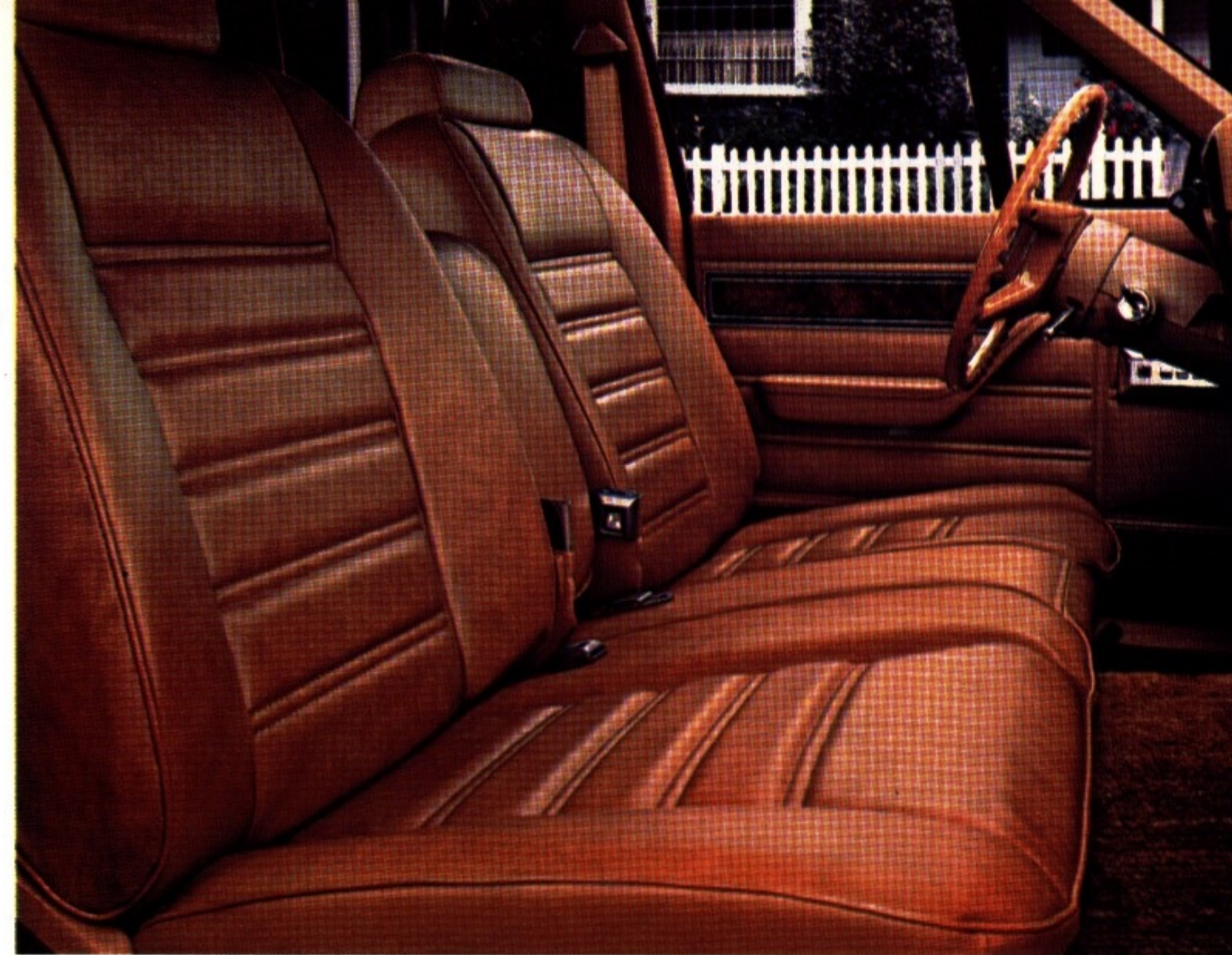
WAGON WHEELS

Zephyr wagons beautifully combine today's needs with classic values of the past. They're weight-efficient, yet space-efficient as well.

Zephyr Wagon, for example, features the largest cargo area of any North-American-made wagon in its class — 2251 litres (79.5 cu. ft.), with the second seat down. The load floor is six and a half feet in length and flat.

With the second seat up, there's ample room for five people when you choose standard bucket seats trimmed in pleated vinyl. Optional six-passenger seating is available with a bench seat or the upgraded Flight Bench seat, either trimmed in your choice of vinyl or cloth. (See page 15 for more information on your choice of seats.) Standard features in the Zephyr Wagon include a cargo area light, tinted glass in the liftgate, and carpeting on the load floor and the second seatback. An ideal choice to increase your wagon's cargo capacity is Zephyr's optional luggage rack.

To dress up your wagon, consider the elegant Villager option which features simulated medium cherry woodtone paneling on the sides. (See page 13.) It's one of the smartest wagons on the road today.



Optional Flight Bench seat, in Caramel, trimmed in vinyl, with fold-down centre armrest.

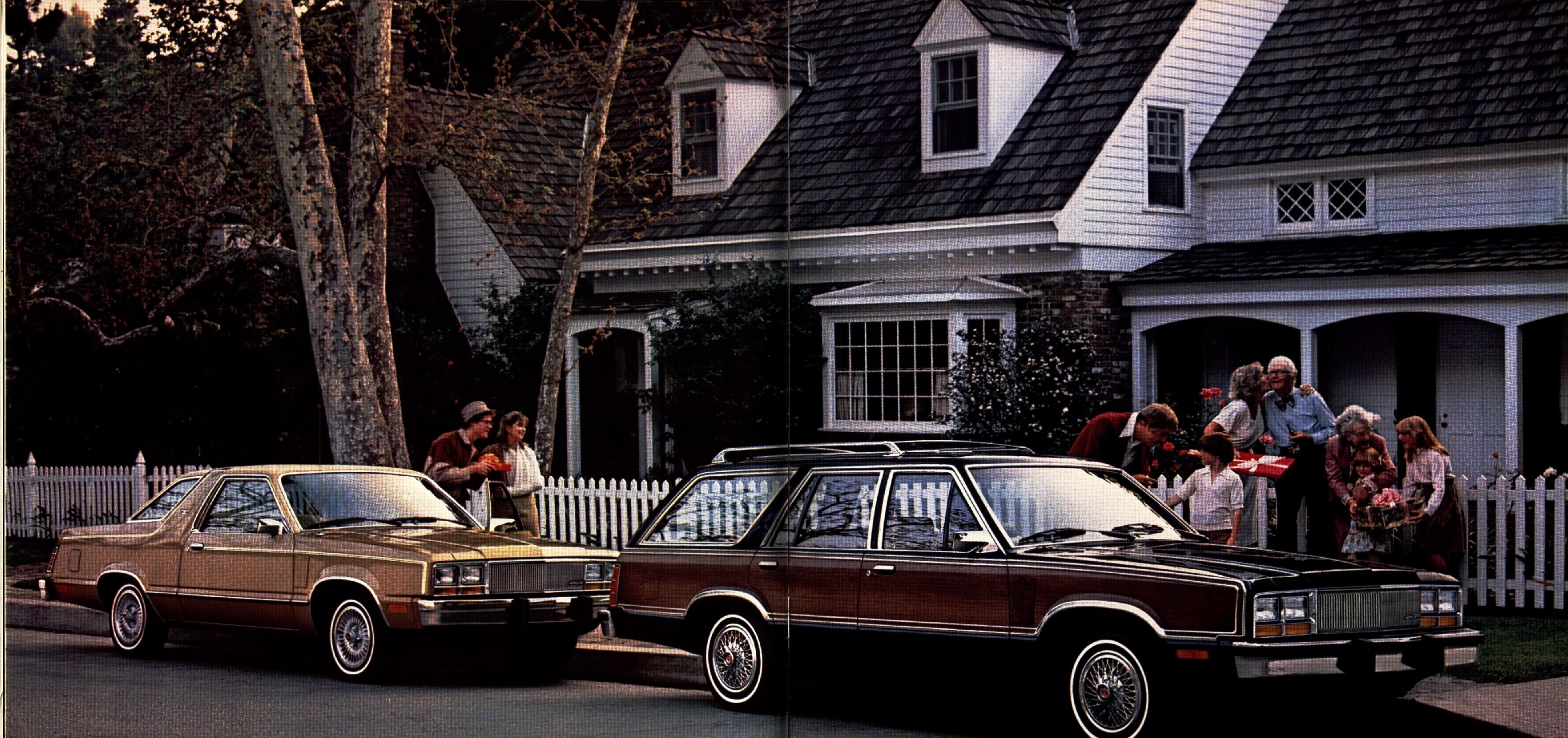


Easy-to-raise liftgate opens onto the largest cargo area of any North-American-made wagon in its class.

A handy wagon option is the rear window wiper/washer.



Mercury Zephyr Wagon in Dark Brown Metallic.



Mercury Zephyr Z-7 shown in optional Sand Metallic.

Mercury Zephyr Villager Wagon, in Black, with woodtone sides and optional roof rack.

SEDAN WHEELS

Zephyr's efficient use of space is nowhere more evident than in its four-door sedans. There's ample room up front and in back, and a generous-size trunk offers you 476 litres (16.8 cu. ft.) capacity.

Impressive also are the features standard on *all* Zephyrs: power front disc brakes, radial tires, protective body mouldings, deluxe sound insulation, even a deluxe steering wheel and a woodtone-trimmed instrument panel (shown at right).

That's the basic Zephyr. From there, it's up to you. There's a wide range of interior choices — starting with standard bucket seats trimmed in vinyl, and including regular bench seats, all the way up to the luxurious Zephyr GS Flight Bench seat trimmed in Vaquero cloth, at right. (See page 15 for more information on seats.) An option you might want to consider is Zephyr's stylish centre console (pictured on page 12) which incorporates an electronic digital clock and a graphic display of warning lights.

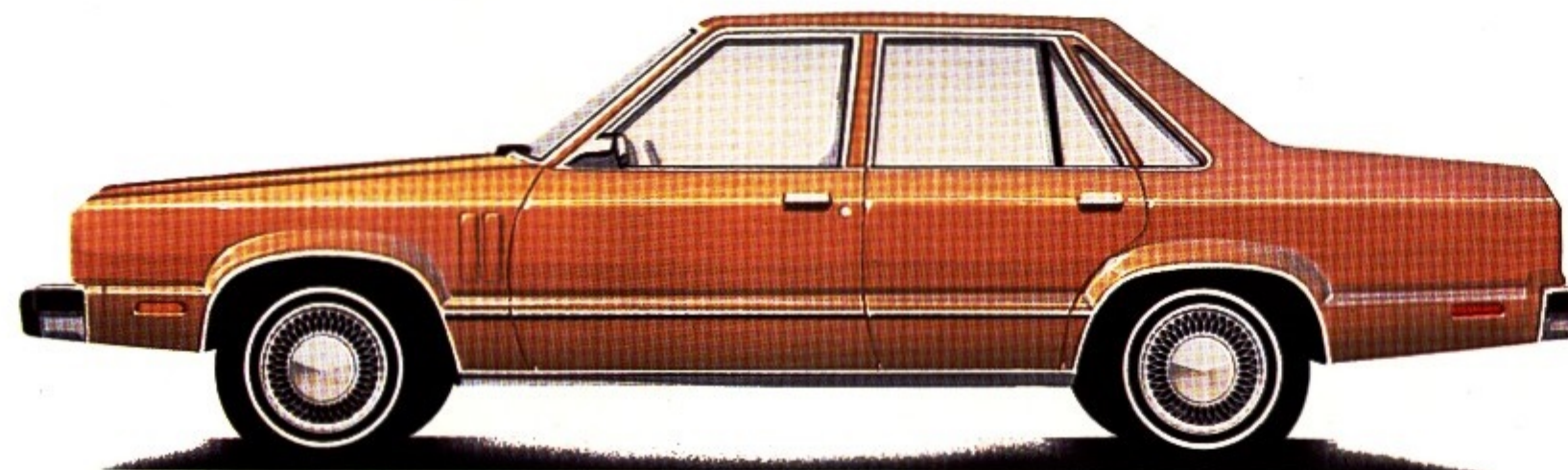
Whatever you choose, Zephyr offers you a lot of sedan for the money.



Zephyr GS Flight Bench seat, with fold-down centre armrest, in Vaquero cloth.



Zephyr's standard instrument panel with optional speed control and luxury steering wheel.



Mercury Zephyr four-door in Pastel Chamois.



Mercury Zephyr GS four-door in Dark Cordovan Metallic.

SPORTY WHEELS

Zephyr Z-7. The look is as unique as the name... with its distinct crossover roof and bold wraparound taillights.

You'll be surprised by all the room inside this sporty, personal-size car. Bucket seats are standard, trimmed in pleated vinyl. And your choices only begin there. You may want to add the Sports Instrumentation Group option (shown right), featuring a tach, odometer, ammeter, and oil/temperature gauge. Also ideal for sports enthusiasts is the Sports Handling Suspension option — a beefed-up suspension system that puts more glued-to-the-road action in your driving. Worth noting: TRX tires and wheels are available for the first time on Z-7 this year.

Other thoughtful touches in Z-7, both standard, are the tinted rear window glass and deluxe seat belts with tension reliever.

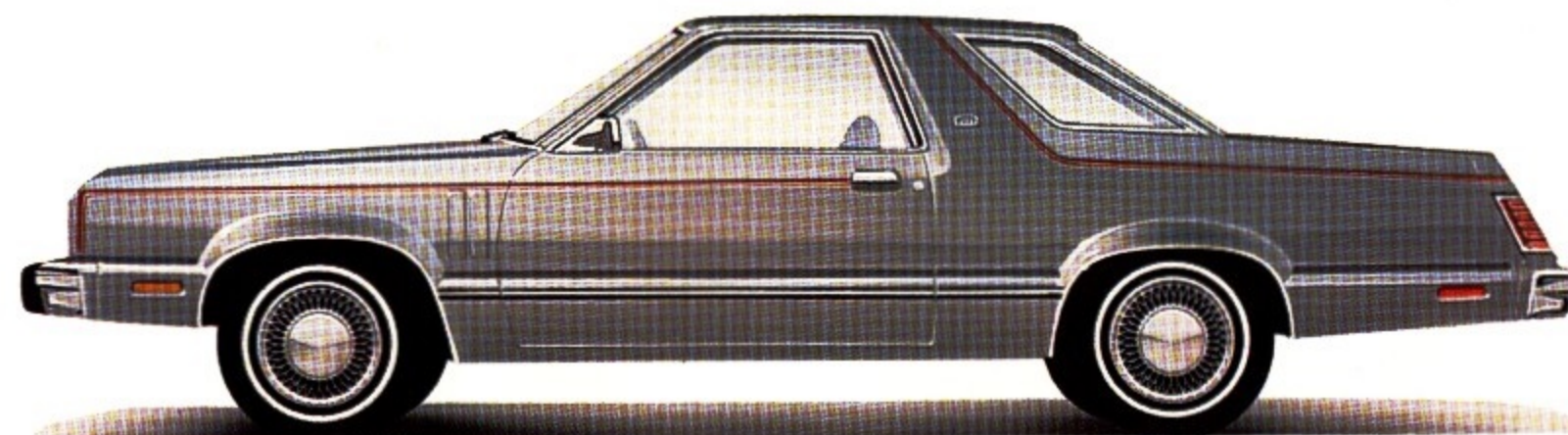
For sporty good looks — for the sheer fun of driving — make your mark with a Z-7.



Z-7's sporty bucket seats, trimmed in pleated vinyl.



A distinctive option is the Sports Group instrument panel.



Mercury Zephyr Z-7 in Silver Metallic.



Mercury Zephyr Z-7 Sport, in White, with Dark Blue vinyl roof.

FUN WHEELS

The Zephyr two-door sedan, like all Zephyrs, comes in two versions: the base Zephyr and an upgraded version — in this case, the Zephyr GS. Fun and fancy.

Like all Zephyrs, both versions are roomy and comfortable... in front and in back — and the trunk's big enough to pack your gear, and then some.

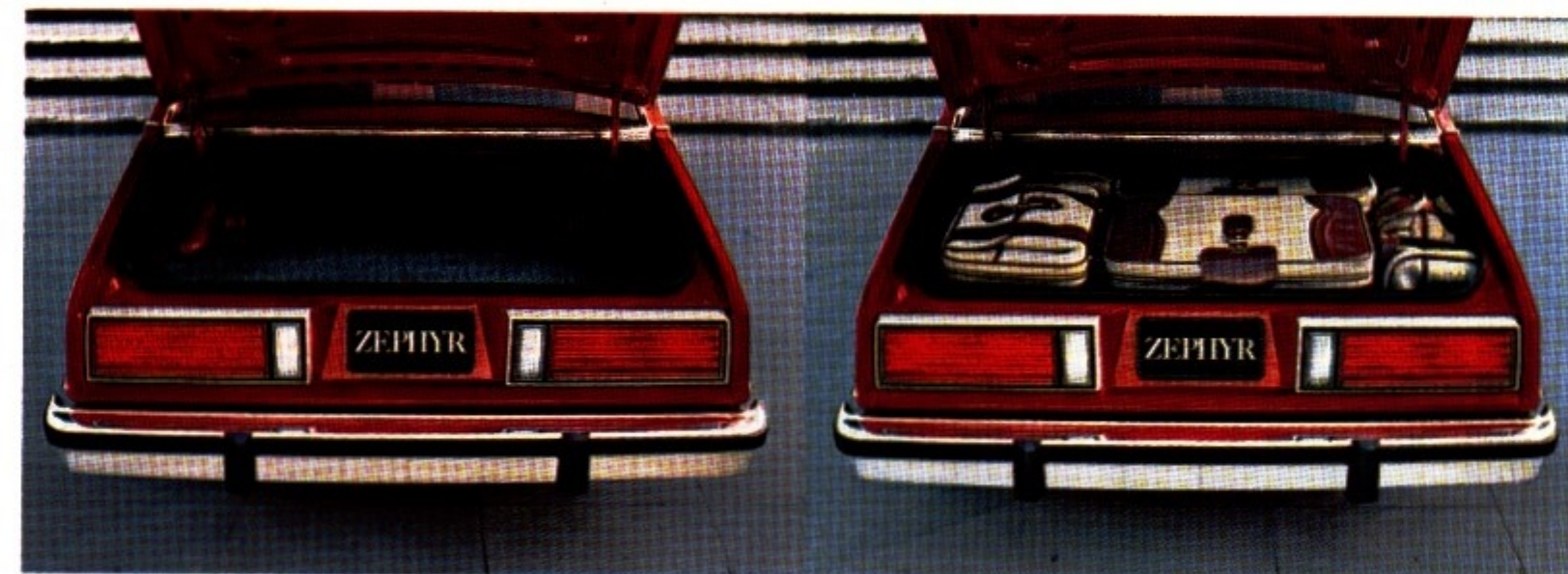
Your choice of interiors is beautiful. Standard are vinyl bucket seats, or you can choose optional cloth and vinyl bucket seats, or the luxurious Zephyr GS Flight Bench seat with fold-down centre armrest. (See page 15 for more details.) And you'll find many thoughtful features are standard, including a day/night rear view mirror, a passenger-door courtesy light switch, a cigar lighter, a rear-seat ashtray, and a right-hand visor vanity mirror.

Standard engine is the 2.3 litre four-cylinder, whose pep and power-to-weight ratio will please you. Your choices range up to a 4.2 litre V-8 that really puts the Zap in Zephyr. A Traction-Lok rear axle is optional; you'll appreciate it on ice, mud, sand, or snow.

Zephyr two-door — a beautiful way to have fun, without breaking your budget.



Cloth and vinyl bucket seats, in Dark Red, standard on GS.



Zephyr's trunk is the largest in its class.



Mercury Zephyr two-door sedan in Antique Cream.



Mercury Zephyr GS two-door in Medium Red with full vinyl roof.

OPTIONS



AM/FM STEREO RADIO WITH CASSETTE TAPE is one of five superb radio choices. (For a full listing of available radios, see page 14.) Add the optional Premium Sound System to any of the Zephyr stereo-radios, and you get vastly improved sound from upgraded rear speakers and power amplifier.



AIR CONDITIONING with manual temperature control adds comfort to your warm weather driving.



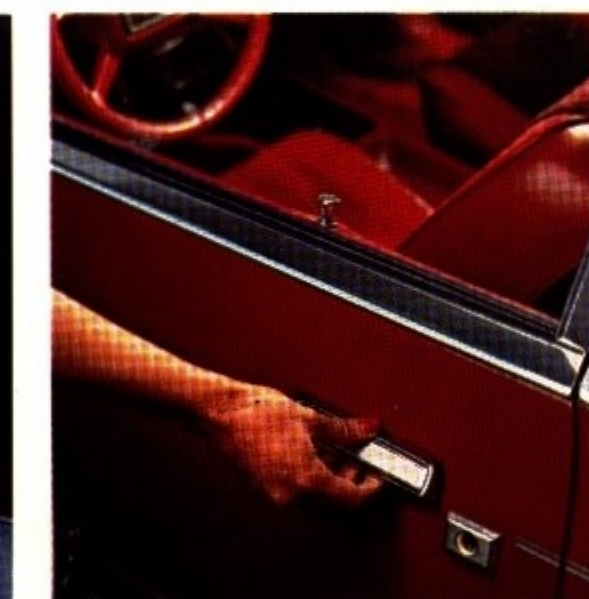
FLIP-UP, REMOVABLE MOONROOF. Let the sunshine, fresh air, and the moonlight in with this easy-to-handle, easy-to-like option.

POWER

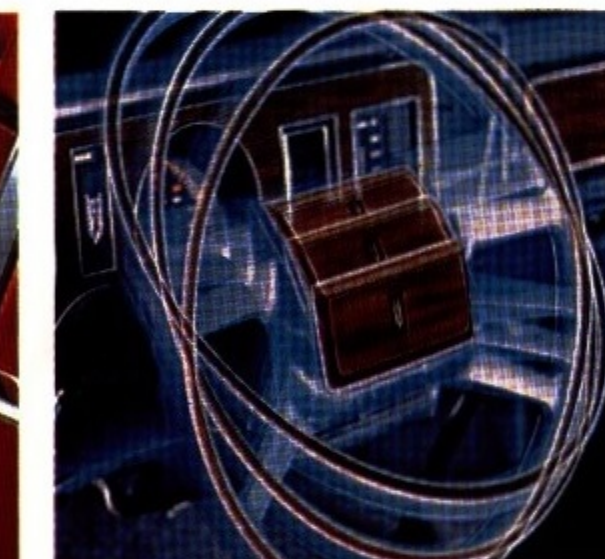
- POWER DOOR LOCKS
- POWER SEATS
- POWER STEERING
- POWER TRUNK RELEASE
- POWER WINDOWS



CONSOLE smartly incorporates an electronic digital clock and a graphic display of warning lights.

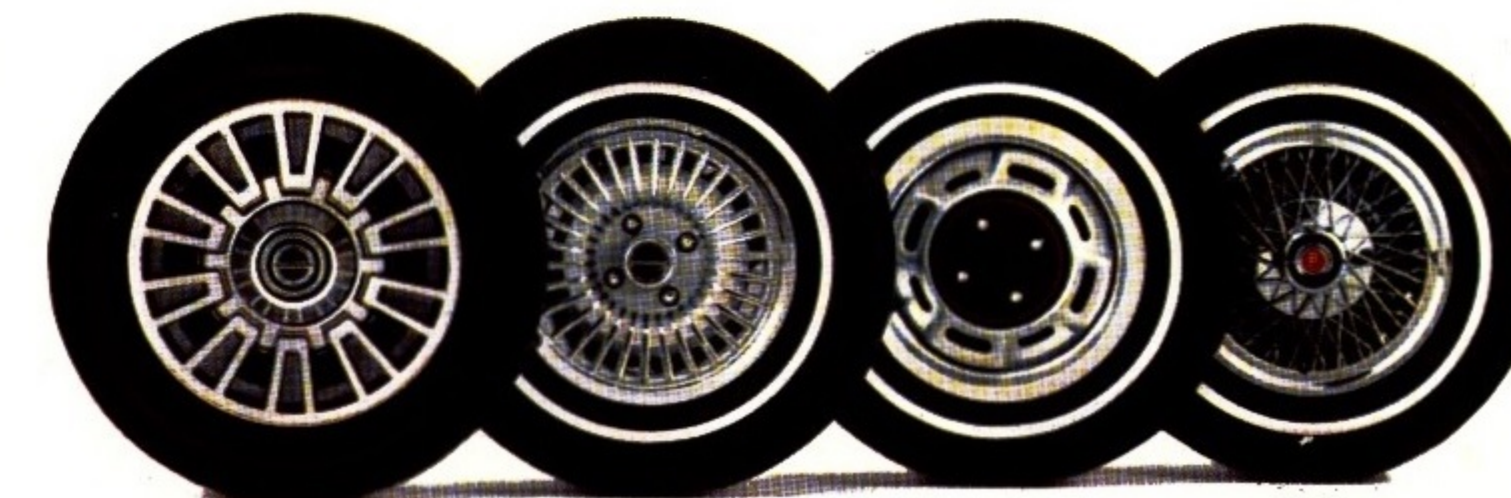


ILLUMINATED ENTRY SYSTEM. When you pull the door handle, a ring of light appears around the keyhole. At the same time, the interior lights go on. A great convenience feature.



TILT STEERING WHEEL adjusts to five possible positions. It also tilts to allow easy entry and exit from the driver's seat. Includes luxury steering wheel, requires power steering.

SPEED CONTROL with "resume" feature maintains the speed you select.



WHEELS: Aluminum wheels, styled wheel covers, styled steel wheels and trim rings, wire wheel covers.

☒ **MAKE YOUR OWN CHOICES.**



☐ **MERCURY ZEPHYR
2-DOOR SEDAN**



☐ **MERCURY ZEPHYR
4-DOOR SEDAN**

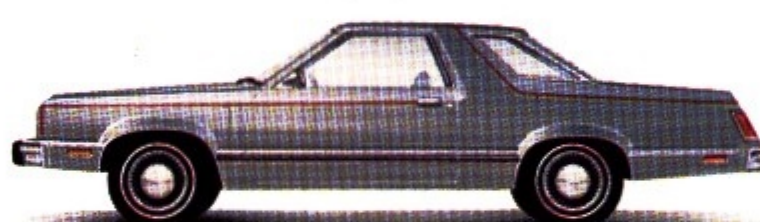
Standard features on all Zephyr Sedans:

- STANDARD EXTERIOR FEATURES**
- Dual halogen headlamps
 - Bright vertical theme grille
 - Deluxe wheel covers
 - Upper bodyside dual accent stripes
 - Aluminum bumpers
 - Front bumper guards
 - Bright LH outside mirror
 - Narrow bodyside protection moulding
 - Lower bodyside road abrasion protection
 - Bright drip, belt, and window frame mouldings
 - Bright wheel-lip and rocker panel mouldings
 - Large taillamps with integral backup lights
 - Bright headlamp/parking lamp frames
 - Dual front fender louvres

- STANDARD INTERIOR FEATURES**
- Vinyl low-back bucket seats
 - Inertia seatback release (2-dr. models)
 - Colour-keyed steering wheel/column
 - 10-oz. cut-pile carpeting
 - Two stalk-mounted controls on steering column for horn, turn signals, dim switch, and windshield washer/wiper
 - Woodtone appliques on instrument panel
 - RH visor vanity mirror
 - Front door courtesy light switches
 - Dome lamp
 - Day/night 10-inch rearview mirror
 - Cigar lighter
 - Front and rear seat ashtrays
 - Glove box lock
 - Luggage compartment mat (burloom)

STANDARD FUNCTIONAL FEATURES

- 2.3L 2-V 4-cyl. engine
- 4-speed manual transmission
- Rack-and-pinion steering
- P175/75R14 steel-belted radial tires
- Power front disc/rear drum brakes
- Maintenance-free battery
- Strut-type front suspension; 4-bar link design coil-spring rear suspension
- Front stabilizer bar
- Fluidic windshield washers
- Inside hood release
- High/low ram air ventilation
- Electronic ignition and voltage regulator
- Anti-theft door and trunk latches
- Unitized body construction
- Deluxe sound insulation
- Electric rear window defroster
- Mini-spare tire
- 40-amp alternator
- Corrosion protection
- Coolant recovery system



☐ **MERCURY ZEPHYR Z-7
SPORT COUPE**

- Includes all Zephyr Sedan standard features *plus* these additions and/or differences.
- Contemporary wrapover roof design
 - Upper bodyside accent stripe treatment continues over roof
 - Wraparound taillights
 - Luxury door trim panel with bright accents
 - Instrument panel with high-gloss woodtone appliques
 - Deluxe seat belts with tension reliever
 - Z-7 medallion



☐ **MERCURY ZEPHYR WAGON**

- Includes all Zephyr Sedan standard features *plus* these additions and/or differences.
- Bright liftgate window moulding
 - Flat load floor

- Load floor carpet including second seatback
- Cargo area light
- "Liftgate open" warning light



☐ **MERCURY ZEPHYR
VILLAGER WAGON**

- Includes all Zephyr Wagon standard features *plus* these additions and/or differences.
- Medium cherry woodtone bodyside appliqué with bright surround rails and bright lower bodyside mouldings with woodtone inserts; partial wheel-lip mouldings.
 - Woodtone liftgate appliqué
 - Bright quarter window mouldings
 - "Villager" script on liftgate
 - Delete upper bodyside accent stripes, bright wheel-lip and rocker panel mouldings

☐ **GS OPTION**

- Includes all standard features on Zephyr Sedan, Zephyr Z-7, or Zephyr Villager wagon, *plus* these additions and/or differences.
- Bucket seats with luxury level cloth trim
 - Luxury steering wheel
 - High-gloss woodtone appliqué on instrument panel (std. on Z-7)
 - Luxury door trim panel with woodtone insert and carpet on lower portion (std. on Z-7)
 - 18-ounce cut-pile carpeting
 - Deluxe seat belts (std. on Z-7)
 - Cloth headlining and sun visors
 - Dual bright outside remote-control mirrors
 - Dual hood accent stripes
 - Deluxe bodyside protective mouldings with partial wheel-lip mouldings
 - Wheel-lip/rocker panel mouldings deleted
 - Carpeted luggage compartment

MORE CHOICES

	Zephyr Sedans	Zephyr Z-7	Zephyr Wagons	GS Option
<input type="checkbox"/> Air conditioning, Manual	OPT	OPT	OPT	OPT
<input type="checkbox"/> Axle Ratio, 3.45:1	OPT	OPT	NA	OPT
<input type="checkbox"/> Axle, Traction-Lok	OPT	OPT	OPT	OPT
<input type="checkbox"/> Battery, Heavy-Duty	OPT	OPT	OPT	OPT
<input type="checkbox"/> Bumper Guards, Rear	OPT	OPT	OPT	OPT
<input type="checkbox"/> Bumper Rub Strips*	OPT	OPT	OPT	OPT
<input type="checkbox"/> Clock, Electric Analog	OPT	OPT	OPT	OPT
<input type="checkbox"/> Defroster, Electric Rear Window	STD	STD	STD	STD
<input type="checkbox"/> Extended Service Plan (see page 16)	OPT	OPT	OPT	OPT
<input type="checkbox"/> Illuminated Entry System	OPT	OPT	OPT	OPT
<input type="checkbox"/> Luggage Rack, Roof-Mounted	NA	NA	OPT	NA
<input type="checkbox"/> Mirror, Illuminated RH Visor Vanity	OPT	OPT	OPT	OPT
<input type="checkbox"/> Mirrors, Dual Remote-Control	OPT	OPT	OPT	STD
<input type="checkbox"/> Moulding, Wide Bodyside	NA	OPT	NA	STD
<input type="checkbox"/> Moonroof, Flip-Up, Removable	OPT	OPT	NA	OPT
POWER				
<input type="checkbox"/> Power Brakes	STD	STD	STD	STD
<input type="checkbox"/> Power Door Locks	OPT	OPT	OPT	OPT
<input type="checkbox"/> Power Seat, 4-Way	OPT	OPT	OPT	OPT
<input type="checkbox"/> Power Side Windows*	OPT	OPT	OPT	OPT
<input type="checkbox"/> Power Steering	OPT	OPT	OPT	OPT
<input type="checkbox"/> Power Trunk Release	OPT	OPT	NA	OPT
RADIOS				
<input type="checkbox"/> AM	OPT	OPT	OPT	OPT
<input type="checkbox"/> AM/FM Monaural	OPT	OPT	OPT	OPT
<input type="checkbox"/> AM/FM Stereo	OPT	OPT	OPT	OPT
<input type="checkbox"/> AM/FM Stereo with 8-Track Tape	OPT	OPT	OPT	OPT
<input type="checkbox"/> AM/FM Stereo with Cassette Tape	OPT	OPT	OPT	OPT
<input type="checkbox"/> Premium Sound System	OPT	OPT	OPT	OPT
<input type="checkbox"/> Protection, Lower Bodyside	STD	STD	STD	STD
<input type="checkbox"/> Seat Belts, Deluxe Colour Keyed	OPT	STD	OPT	STD
<input type="checkbox"/> Speed Control	OPT	OPT	OPT	OPT
<input type="checkbox"/> Steering Wheel, Leather-Wrapped*	OPT	OPT	OPT	OPT
<input type="checkbox"/> Steering Wheel, Luxury	NA	NA	NA	STD
<input type="checkbox"/> Steering Wheel, Tilt*	OPT	OPT	OPT	OPT
<input type="checkbox"/> Stowage Compartment, Lockable	NA	NA	OPT	NA
<input type="checkbox"/> Tinted Glass, Complete	OPT	OPT	OPT	OPT
<input type="checkbox"/> Vinyl Roof	OPT	OPT	NA	OPT
<input type="checkbox"/> Windows, Front Vent*	OPT	NA	OPT	OPT
<input type="checkbox"/> Wipers, Interval Windshield	OPT	OPT	OPT	OPT
<input type="checkbox"/> Wiper/Washer, Rear Window	NA	NA	OPT	NA
ENGINES				
<input type="checkbox"/> 2.3 Litre 2V 4-Cyl. Engine	STD	STD	STD	STD
<input type="checkbox"/> 3.3 Litre (200 CID) 1V 6-Cyl. Engine*	OPT	OPT	OPT	OPT
<input type="checkbox"/> 4.2 Litre (255 CID) 2V 8-Cyl. Engine*	OPT	OPT	OPT	OPT
TRANSMISSIONS				
<input type="checkbox"/> Four-Speed Manual Transmission*	STD	STD	STD	STD
<input type="checkbox"/> SelectShift Automatic Transmission*	OPT	OPT	OPT	OPT
<input type="checkbox"/> Floor-Mounted Transmission Selector*	OPT	OPT	OPT	OPT

RADIAL TIRES

<input type="checkbox"/> P175/75R14 BSW	STD	STD	STD	STD
<input type="checkbox"/> P175/75R14 WSW	OPT	OPT	OPT	OPT
<input type="checkbox"/> P185/75R14 WSW	OPT	OPT	OPT	OPT
<input type="checkbox"/> P190/65R390 TR-Type BSW*	OPT	OPT	OPT	OPT
<input type="checkbox"/> Conventional Spare Tire	OPT	OPT	OPT	OPT

BSW - Black Sidewall. WSW - White Sidewall.

WHEELS

<input type="checkbox"/> Wheel Covers, Deluxe	STD	STD	STD	STD
<input type="checkbox"/> Wheel Covers, Styled	OPT	OPT	OPT	OPT
<input type="checkbox"/> Wheel Covers, Wire	OPT	OPT	OPT	OPT
<input type="checkbox"/> Wheels, Styled Steel and Trim Rings	OPT	OPT	OPT	OPT
<input type="checkbox"/> Aluminum Wheels*	OPT	OPT	OPT	OPT

OPTIONAL PACKAGES

<input type="checkbox"/> APPEARANCE PROTECTION GROUP	OPT	OPT	OPT	OPT
Includes front carpeted floor mats, door-edge guards (woodtone on Villager wagon), and license plate frame(s).				
<input type="checkbox"/> CONSOLE	OPT	OPT	OPT	OPT
Includes electronic digital clock with elapsed time/day/date feature; and graphic display with warning indicators for low washer fluid level, low fuel level, or failure of headlights or taillights (running or brake).				
<input type="checkbox"/> LIGHT GROUP	OPT	OPT	OPT	OPT
Includes lights for luggage compartment (Z-7, sedans); ashtray, glove box, engine compartment, rear-door courtesy light switch (four-door); dual beam dome map light.				
<input type="checkbox"/> SPORTS INSTRUMENTATION GROUP	OPT	OPT	OPT	OPT
Includes tachometer, trip odometer, ammeter, oil pressure, temperature gauge				
<input type="checkbox"/> TRX HANDLING SUSPENSION	OPT	OPT	NA	OPT
Includes larger front and added rear stabilizer bar, modified front spring rates, shock absorber valving, front and rear lower suspension arm bushings, and 14x5.5" wheels.				

*Subject to additional requirements or limitations. Please consult your Dealer for details.
STD - Standard OPT - Optional NA - Not Available

INTERIOR SEATING CHOICES



Standard bucket seats in vinyl. Standard on ZEPHYR, ZEPHYR Z-7, and ZEPHYR WAGONS. Colours: Dark Red, Medium Wedgewood Blue, Sand, Caramel, Vaquero.



Standard bucket seats in optional cloth. Available on ZEPHYR, ZEPHYR Z-7, and ZEPHYR WAGONS. Colours: Dark Red, Medium Wedgewood Blue.



Optional bench seat. Available on ZEPHYR, ZEPHYR Z-7, and ZEPHYR WAGONS in vinyl or cloth and vinyl. Colours: Dark Red, Medium Wedgewood Blue, Sand, Vaquero in cloth and vinyl and Dark Red, Medium Wedgewood Blue, Caramel, Sand and Vaquero in all vinyl.



Cloth and vinyl bucket seats. Standard on all Zephyrs with GS OPTION. Optional on all other models. Colours: Dark Red, Medium Wedgewood Blue, Sand, Vaquero.



Optional Flight Bench seat available in cloth and vinyl or vinyl on all Zephyrs with GS OPTION. Colours: Caramel (vinyl only); Dark Red, Medium Wedgewood Blue, Sand, Vaquero.

EXTERIOR COLOUR CHOICES

STANDARD COLOURS	OPTIONAL GLAMOUR COLOURS
<input type="checkbox"/> 1. Black	<input type="checkbox"/> 13. Medium Bittersweet Metallic
<input type="checkbox"/> 2. White	<input type="checkbox"/> 14. Sand Metallic
<input type="checkbox"/> 3. Silver Metallic	
<input type="checkbox"/> 4. Midnight Blue Metallic	
<input type="checkbox"/> 5. Light Medium Blue	
<input type="checkbox"/> 6. Dark Cordovan Metallic	
<input type="checkbox"/> 7. Medium Red	
<input type="checkbox"/> 8. Bright Red	
<input type="checkbox"/> 9. Medium Dark Spruce Metallic	
<input type="checkbox"/> 10. Dark Brown Metallic	
<input type="checkbox"/> 11. Antique Cream	
<input type="checkbox"/> 12. Pastel Chamois	
OPTIONAL TU-TONES	
Sedans	Zephyr Z-7 Sport Coupe
<input type="checkbox"/> Silver Metallic/Medium Red.	<input type="checkbox"/> Medium Red/Silver.
<input type="checkbox"/> Light Blue Metallic/	<input type="checkbox"/> Midnight Blue Metallic/Light Medium Blue.
Midnight Blue Metallic.	<input type="checkbox"/> Sand Metallic/Antique Cream.
<input type="checkbox"/> Dark Brown Metallic/	<input type="checkbox"/> Dark Brown Metallic/
Light Chamois Metallic.	Pastel Chamois Metallic.
<input type="checkbox"/> Medium, Bittersweet Metallic/	<input type="checkbox"/> Dark Cordovan Metallic/
Dark Cordovan Metallic.	Medium Bittersweet Metallic.
<input type="checkbox"/> Antique Cream/Sand Metallic.	
<input type="checkbox"/> Pastel Chamois/Dark Brown.	

MERCURY ZEPHYR SPECIFICATIONS

	2-Door 4-Door	Z-7	Zephyr Wagons
Wheelbase	2680mm (105.5")	2680mm (105.5")	2680mm (105.5")
Turning Radius	39.0'	39.0'	39.0'
Overall Length	4966mm (195.5")	5014mm (197.4")	4966mm (195.5")
Overall Height	1354mm (53.3") 1359mm (53.5")	1328mm (52.3")	1377mm (54.2")
Overall Width	1803mm (71.0")	1803mm (71.0")	1803mm (71.0")
Tread - Front	1438mm (56.6")	1438mm (56.6")	1438mm (56.6")
- Rear	1448mm (57.0")	1448mm (57.0")	1448mm (57.0")
Headroom - Front	975mm (38.4")	935mm (36.8")	991mm (39.0")
- Rear	953mm (37.5")	912mm (35.9")	988mm (38.9")
Legroom - Front (Max.)	1059mm (41.7")	1062mm (41.8")	1059mm (41.7")
- Rear (Min.)	1062mm (41.8") 899mm (35.4")	830mm (32.7")	897mm (35.3")
Shoulder Room - Front	1440mm (56.7")	1440mm (56.7")	1440mm (56.7")
- Rear	1440mm (56.7")	1455mm (57.3")	1440mm (56.7")
Hiproom - Front	1427mm (56.2")	1427mm (56.2")	1427mm (56.2")
- Rear	1364mm (53.7")	1400mm (55.1")	1237mm (48.7")
Luggage/Cargo Capacity (litres/cu. ft.)	476 (16.8)	456 (16.1)	2252 (79.5**)
Fuel Capacity (litres/imp. gal.)	60.5 (13.3)	60.5 (13.3)	60.5 (13.3)
Curb Weight (kilograms/lbs)*	1233 (2714) 1213 (2668)	1235 (2718)	1290 (2838)

*With 2.3 L engine and manual transmission.

**With rear seat folded down.

- 72 litres/16.0 Imp. gals with 3.3 L and 4.2 L engines.

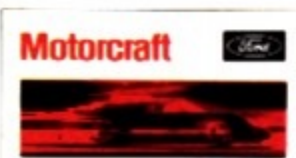
This brochure has been prepared only as a general guide to the customer and every effort has been made to ensure that all information is correct at the time of printing. However, some errors may have been included and some of the information or specifications may have been changed since the time of printing. Your dealer will have full details of any changes and/or corrections, and you should ask him to bring you up to date at the time of your purchase. Ford Motor Company of Canada, Limited reserves the right to change prices, colours, materials, specifications and models and to discontinue models without notice and without incurring obligations of any kind. Some features described or shown may be optional at extra cost. Some options are required in combination with other options.



**EXTENDED
SERVICE
PLAN**

THE FORD EXTENDED SERVICE PLAN

When you're choosing options for your Mercury Zephyr, consider the merits of ordering the Ford Extended Service Plan. Your dealer has full details. It provides extended repair cost protection, as specified, for parts and labour, for repairs to major components of the mechanical and electrical systems. The plan is offered by Ford Motor Company of Canada, Limited, and is honoured by participating Ford and Mercury dealers throughout Canada and the United States.



**QUALITY
REPLACEMENT
PARTS
FROM
FORD**

...FOR SURE

Your new Mercury Zephyr comes equipped with factory engineered and approved parts, including a dependable Motorcraft battery, Motorcraft spark plugs, Motorcraft shock absorbers, ignition parts and Long Life oil filter. For continued performance be sure to specify genuine Motorcraft parts whenever replacement is necessary.

CORROSION PROTECTION

All Zephyr cars are protected with the DURAGUARD System, which includes 7 processes built in at the factory as standard equipment, to provide corrosion protection as follows:

- precoated steel on doors, quarter panels and other selected areas;
- galvanized steel on rocker panels, selected cowl tops and underbody parts;
- vinyl sealer on the underside of rear wheelhouses;
- phosphate coating on the entire car body after a super cleaning process;
- electrocoat process to apply corrosion resistant primer paint, also on the entire body;
- aluminized wax sprayed into hard-to-reach lower body areas, the inside surfaces of doors and quarter panels.
- protective vinyl coating on the lower bodyside for resistance to stone chipping and road abrasion.

The DURAGUARD System is backed by a no-extra charge 36-month unlimited distance manufacturer's warranty against corrosion perforation. This warranty, transferable to succeeding owners during this warranty period, covers the cost of both labour and materials for repair of perforation of parts caused by corrosion. Exhaust system components are excluded. The basic 12-month/20,000 kilometre warranty covers corrosion, other than perforations, that are due to defective factory materials or workmanship. Ask your dealer for details.

MERCURY ZEPHYR

