

1981 OLDSMOBILE

TORONADO • NINETY-EIGHT • DELTA 88 • CUSTOM CRUISER





We've had one built for you.

Today, more than ever, North America is looking for quality in the cars it buys.

That's why we think you're going to like what you see in the 1981 Oldsmobiles.

Oldsmobile's commitment to value and quality goes back farther than any car maker in North America—to 1897. In fact, the Oldsmobile Motor Vehicle Company was founded with this single-minded purpose:

"...to build one carriage in as nearly perfect a manner as possible..."

We've been at it ever since—offering quality and total value.

And this is exactly what North American car buyers want these days. You've made us the third best-selling North American nameplate, year after year. You've made Cutlass North America's favourite car—of any size, any price, import or domestic. Over the past five years, you've made Delta 88 the fastest-growing full-size car. And more recently, you've made Oldsmobile North America's number one seller of diesel-powered automobiles.

For 1981, North America is also looking for fuel economy. And our new Oldsmobiles are ready to meet your needs there, too.

Your Oldsmobile dealer has fuel consumption/economy estimates based upon Transport Canada approved test methods which are available for review. Ask your sales person to show them to you. We think you'll find them impressive.

To achieve optimum levels of fuel

efficiency, a number of improvements have been engineered into our 1981 models—expressly to help conserve energy.

One of these is the torque converter clutch in our automatic transmissions. It's standard on Cutlass, Delta 88, Ninety-Eight and all Cruiser models. It engages at cruising speed to increase the efficiency of power transfer from engine to road, and contributes significantly to highway fuel economy.

A Computer Command Control, optional on some 1981 gasoline engines, helps reduce exhaust emissions while maintaining fuel efficiency. Its electronic control module monitors engine speed, coolant temperature and oxygen in the exhaust. This data is analyzed at thousands of calculations per second, then the carburetor is adjusted to maintain the proper air/fuel ratio—so the catalytic converter can minimize emissions. Result? We're helping to clean the air, while providing good fuel economy.

Caution: Use of leaded fuel will cause the Computer Command Control system to malfunction.

Another development is a new four-speed overdrive automatic transmission, now standard on gasoline engined Ninety-Eights, available on Delta 88s and Custom Cruiser with the 5.0 litre V8. The .67 ratio overdrive fourth gear reduces engine RPMs at highway speeds, and that contributes to impressive fuel economy.

Low drag front disc brakes are now standard on all 1981 Delta 88, Ninety-Eight and

Omega models. This helps reduce fuel-consuming friction for greater efficiency.

Oldsmobile, North America's number one seller of diesel-powered cars, is offering the fuel-saving benefits of a diesel engine, with new roller hydraulic lifters and extended service intervals. The diesel V8 is available in 19 models, including all Cutlass, Delta 88, Ninety-Eight and Toronado models.

Finally, all 1981 Oldsmobile models will include new easy-roll tires as standard equipment. These tires are designed to help reduce fuel-consuming roll-resistance and contribute to fuel economy.

There's much more to like about the 1981 Oldsmobiles, as you will find by studying these pages, model by model. We're confident we have an Oldsmobile that's built for you—but which one depends on your needs and preferences.

So seek it out. Drive it proudly. Whether you buy or lease it, our commitment to quality and value rides with you every mile of the way.

Table of contents:

Toronado	Pages 3-7
Ninety-Eight	8-13
Delta 88	14-21
Custom Cruiser	22-25
Options/Accessories	26-27
Complete Olds line	28

A word about this catalogue: We have tried to make this catalogue as comprehensive and factual as possible and we hope you find it helpful. However, since the time of printing, some of the information you will find here may have been updated. Also, some of the equipment shown or described throughout this catalogue is available at extra cost. Your dealer has details and, before ordering, you should ask him to bring you up to date.

A word about engines: Oldsmobiles are equipped with GM-built engines produced by various Divisions of General Motors Corporation and GM of Canada. See pages 7, 13, 21 and 25 of this catalogue and your dealer for details.

Speedometers in Canada have major scale in km/h, secondary in mph and odometer in kilometres.

A word about assembly, components and optional equipment in these vehicles: The vehicles described in this brochure are assembled at facilities of General Motors of Canada Limited or car Divisions of General Motors Corporation or at

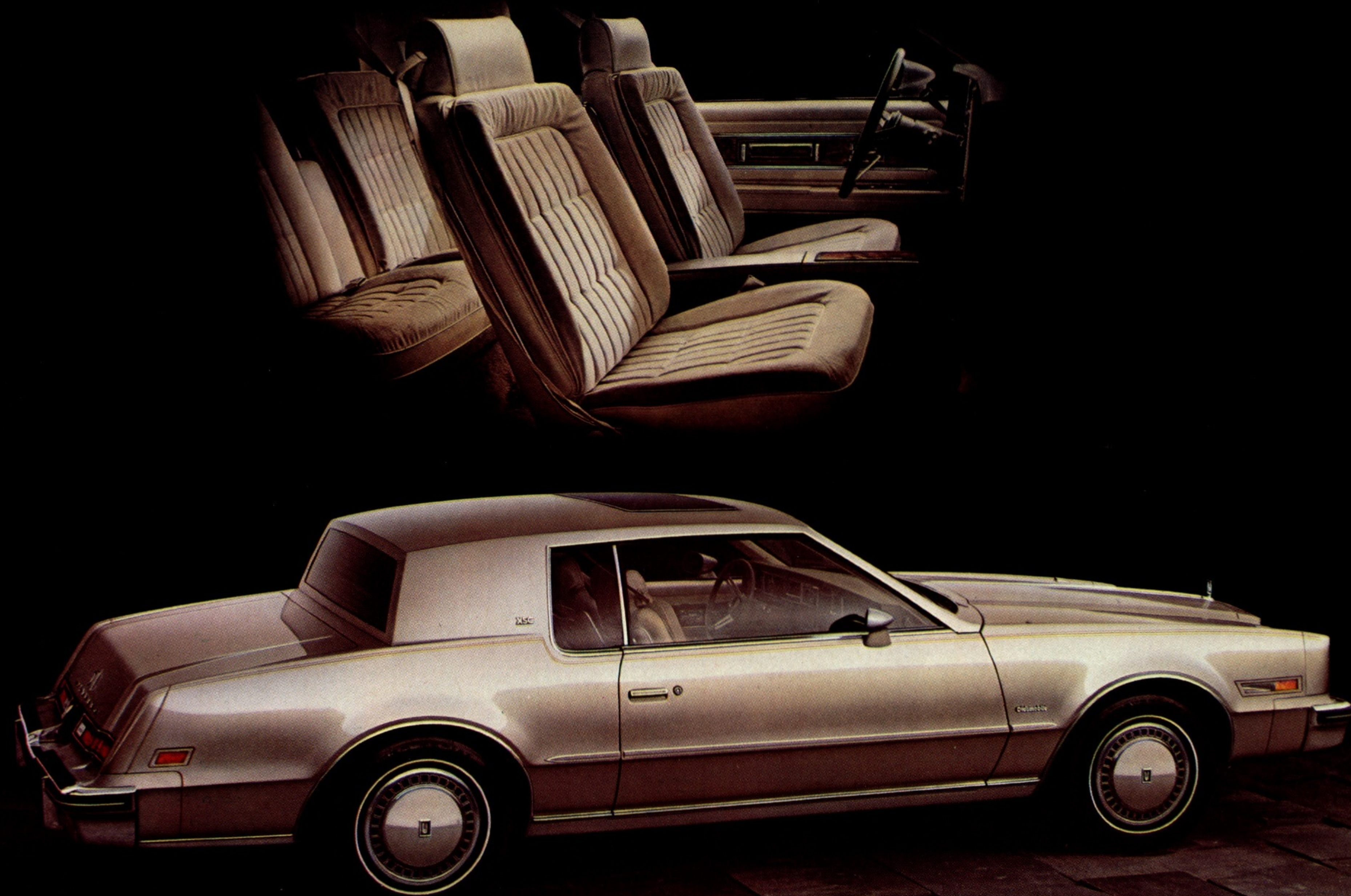
facilities of General Motors Corporation operated by the GM Assembly Division. These vehicles incorporate thousands of different components produced by General Motors of Canada Limited and related companies and by various suppliers to General Motors of Canada Limited or related companies. From time to time during the manufacturing process, it may be necessary, in order to meet public demand for particular vehicles or equipment, or to meet federally mandated emission and safety requirements or fuel economy guidelines, or for other reasons, to produce vehicles with different components or differently sourced components than initially scheduled. All such components have been approved for use in our products by General Motors of Canada Limited or related companies and will provide the quality performance associated with our name.

Please note that certain optional equipment can be ordered only in conjunction with other optional equipment. Also, upgrading from specified standard equipment may be necessary when certain optional equipment is ordered. Ask your sales representative for details.

With respect to extra cost optional equipment, make certain you specify the type of equipment you desire on your vehicle when ordering it from your dealer. Some options may be unavailable when your car is built. Your dealer receives advice regarding current availability of options. You may ask the dealer for this information. GM also requests the dealer to advise you if an option you ordered is unavailable. We suggest you verify that your car includes the optional equipment you ordered or, if there are changes, that they are acceptable to you.

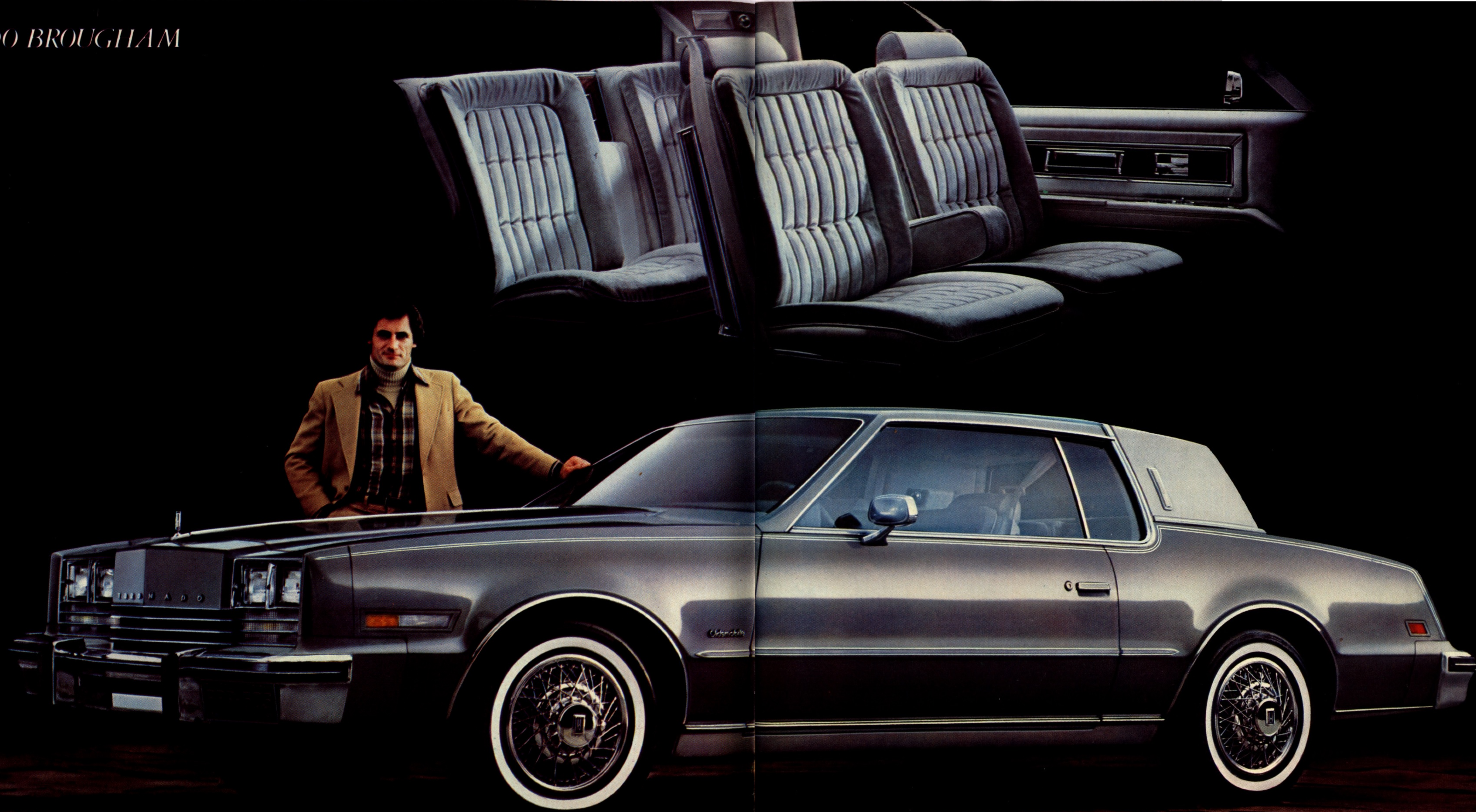
All illustrations and specifications contained in this catalogue are based on the latest product information available at time of publication approval. The right is reserved to make changes at any time, without notice, in prices, colours, materials, equipment, specifications and models, and to discontinue models. Some of the equipment shown or described throughout this catalogue is available at extra cost. Check with your Oldsmobile dealer for complete information.

TORONADO XSC



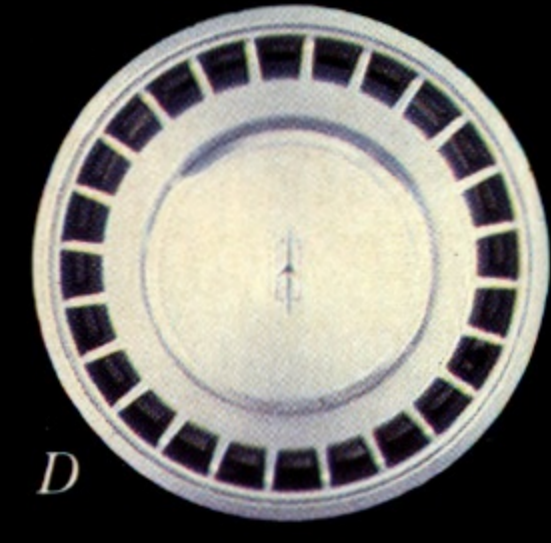
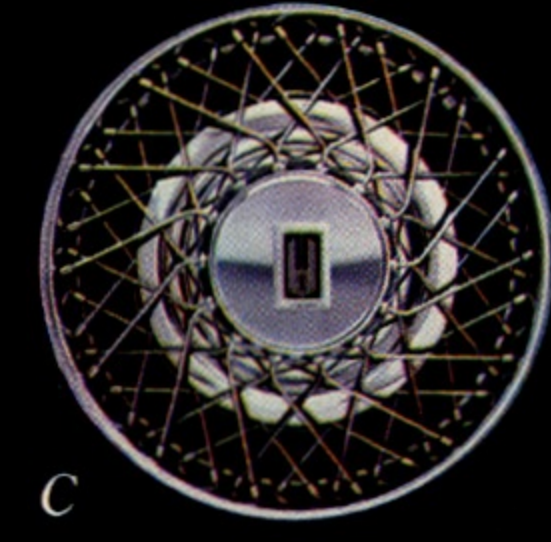
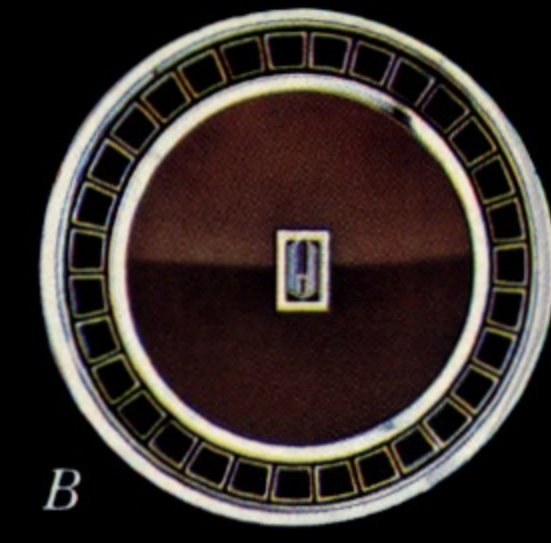
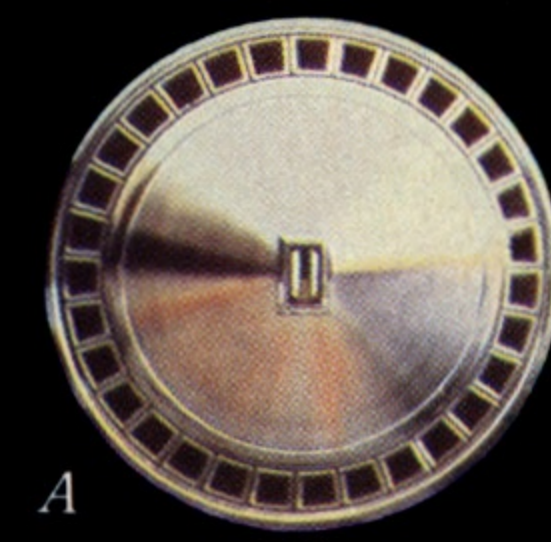
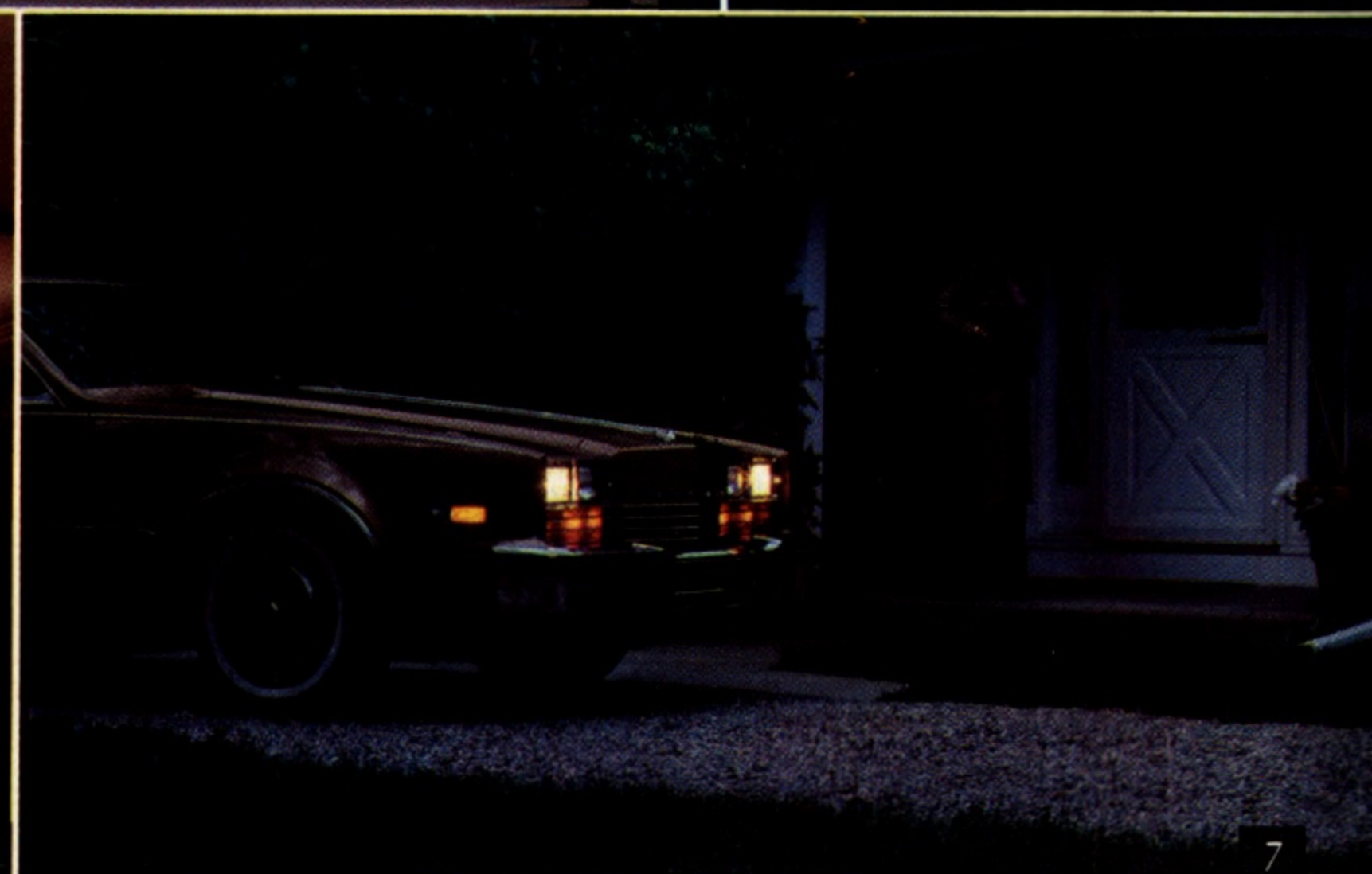
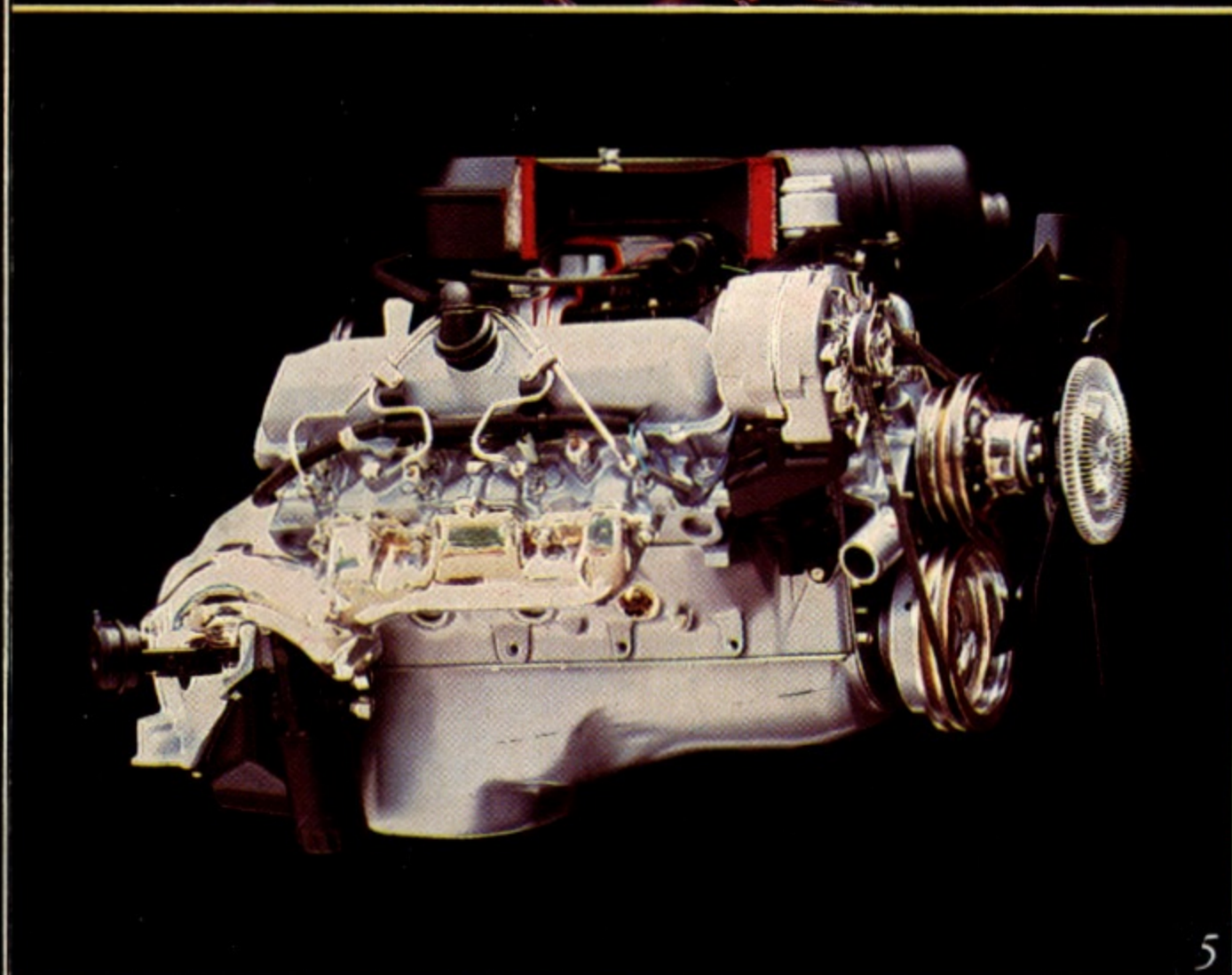
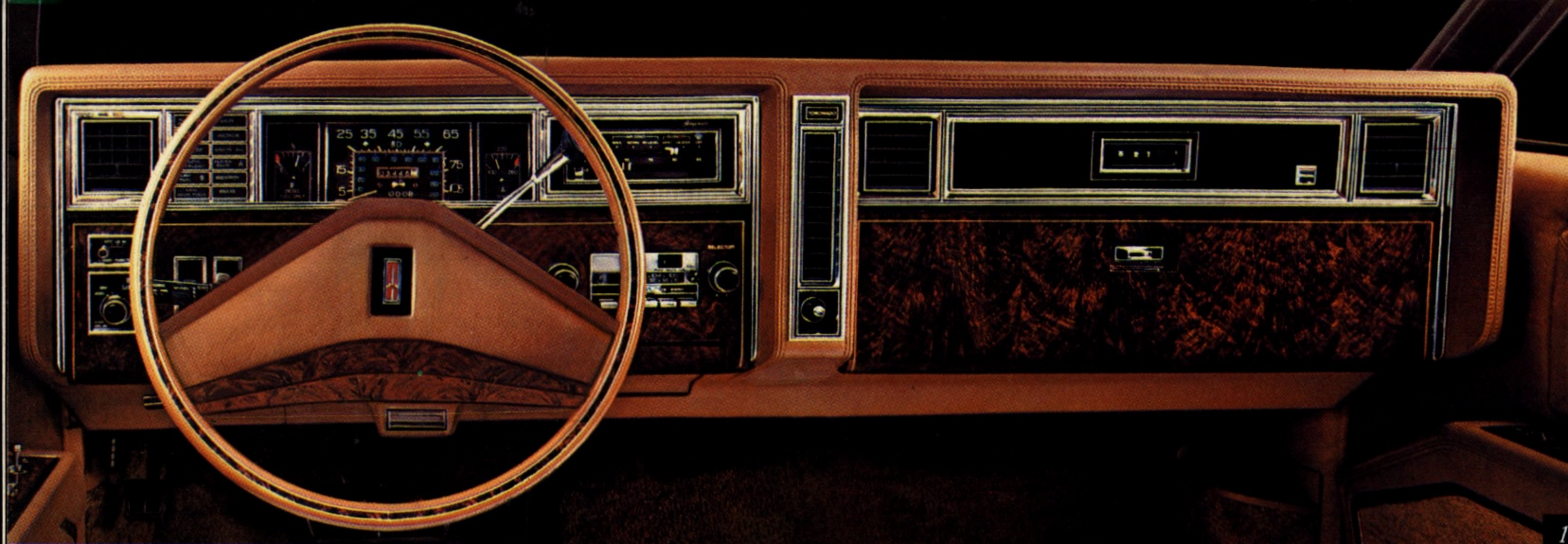
All that's Toronado, with special credentials of its own.

TORONADO BROUGHTAM



TORONADO

Have one built for you. For you alone.



TORONADO STANDARD EQUIPMENT:

Chassis and body:

- Electronic high-energy ignition system
- Power brakes with front discs
- Power steering
- Front torsion bar and rear coil spring suspension
- Full torque-beam frame construction
- Compact spare tire and wheel
- New side-frame jacking system
- Space-efficient trunk
- Bumper impact strips plus front and rear guards with inserts
- Extensive anti-corrosion treatments and sound deadeners
- Automatic level control system
- Tungsten halogen high beam headlamps
- Freedom II maintenance-free battery
- Four-wheel independent suspension
- Deluxe wheel discs

Interior:

- Divided bench front seat with individual controls
- Power 6-way seat adjuster, driver side
- Full-foam cushions throughout
- Power side windows
- Automatic side window defoggers
- Four-Season air conditioner
- Front armrests with power controls
- Cigarette lighter
- Electric digital clock
- Power door locks
- Cut-pile carpeting wall-to-wall and lower door panels
- Deluxe luggage compartment trim and spare tire cover
- Interior-operated hood release
- Instrument

- panel temperature and trip odometer gauges
- Simulated Butterfly Walnut-grain instrument panel trim
- Remote control outside mirrors, driver and passenger sides
- AM-FM stereo radio, power antenna, 2 rear speakers
- Deluxe seat belts, all passenger positions
- Soft-Ray tinted glass
- Deluxe steering wheel
- Rear window defogger

ADDITIONAL STANDARD EQUIPMENT:

- Engine, 5.0-litre V8 (307 CID) 4-bbl.
- Transmission, 3-speed automatic
- Tires, P205/75R15 steel-belted radial-ply white-stripe
- Mouldings: bright roof drip, rocker panel, wheel-opening, belt reveal.

TORONADO XSC STANDARD EQUIPMENT:

- Contour front bucket seats
- Sport console (shifter on column)
- Leather-wrapped custom sport steering wheel
- Instrument panel gauges
- Larger front and rear stabilizer bars
- Tires, P225/70R15 steel-belted radial-ply white-stripe
- Painted wheel discs
- Dual remote-control sport mirrors
- Accent stripe
- XSC emblems

TORONADO AVAILABLE EQUIPMENT:

- Powertrains, see below

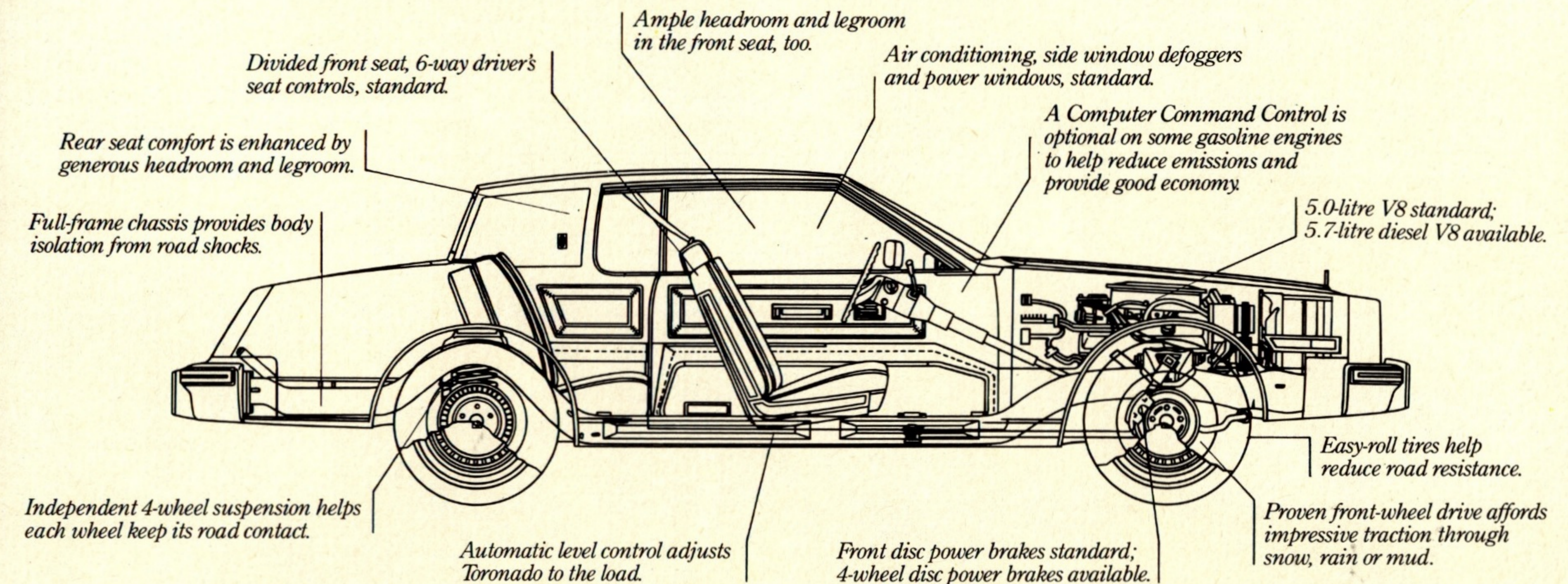
- Computer Command Control (gasoline engines only)
- Reclining seat back, passenger side, manual or power
- Reclining seat back, driver side, manual
- Power trunk-lid lock release
- Auxiliary floor mats, front and rear with carpet inserts
- Luggage compartment floor mat
- Body side moulding, colour-keyed to body
- Bright door-edge guard mouldings
- Electric sunroof with sliding metal panel
- Electric sliding tinted glass astrorooftop
- Pulse wiper system
- Landau rooftop covering, padded vinyl
- Tempmatic air conditioner
- Exterior sail panel opera lamps
- Combination dome and dual-lens reading lamp
- Illumination package, front door locks and interior
- Outside mirrors, electrically operated driver and passenger sides
- Illuminated visor vanity mirror, passenger side
- Outside mirror, remote control with illuminated thermometer, driver side
- Body side accent stripe

- Power disc brakes, rear
- Engine block heater
- Automatic Cruise Control
- Tilt-Away steering wheel
- Tilt-and-Telescope steering wheel
- Simulated wire wheel disc
- Simulated wire wheel disc with lock
- Cast aluminum styled wheel
- High-capacity battery
- Theft-deterrent system, starter-locking
- Digital fluorescent clock
- Radio and tape players (see page 26)
- Instrument cluster gauges
- Exterior lamp monitor, front and rear
- Special Firemist exterior paint
- Custom leather trim in seating areas
- Convenience group, lamps and mirrors
- Reminder package, indicators
- Special lower body paint scheme
- XSC Package
- Puncture-sealing tires

AVAILABLE SPECIAL USE EQUIPMENT:

- Firm ride and handling package
- High-capacity Delcotron
- Trailer electrical wiring harness
- High-capacity engine cooling system

Toronado: Our state of the art in personal luxury cars.



Toronado '81: Uncommon luxury and impressive fuel economy, too.* Certainly you want the style, luxury and front-wheel drive that are Toronado hallmarks. They're so nice to enjoy. And you get them all in 1981...with a big plus.

The plus is a new economical 4.1-litre V6 engine that's optional, combined with new easy-roll tires for impressive fuel economy. Other engines for Toronado include the standard 5.0-litre gasoline V8 and the optional 5.7-litre diesel V8.

Toronado. Have one built for you. For you alone.

1. The Toronado control centre. 2. A real touch of class. Supple leather inserts in seats and backs are available in Doeskin, Maple Red and Slate Gray. 3. 15.2 cubic feet of lined and carpeted trunk space.

4. (A) Standard wheel discs (B) XSC painted discs (C) Locking simulated wire discs available (D) Aluminum sport wheel. 5. 5.7-litre diesel V8 available. 6. Convenient combination armrest and control panel. 7. Available Twilight Sentinel chases away shadows after you park.

Speedometers in Canada have major scale in km/h, secondary in MPH and odometer in kilometres.

TORONADO POWER TEAMS

Engine	V.I.N. Engine Code†	Ordering Code	Displacement (Cubic inches)	Coupe	Transmission Automatic	Computer Command Control System Opt. NBI
5.0 Litre 4-Bbl. V8	Y	LV2	307	Std.	Std.	EC
5.7 Litre Diesel V8	N	LF9	350	EC	Std.	N/A
4.1 Litre 4-Bbl. V6	4	LC4	252	EC	Std.	Req.

(N.Y.) Produced by GM - Oldsmobile Motor Division, U.S.A. (4) Produced by GM - Buick Motor Division, U.S.A.
† V.I.N. (Vehicle Identification Number) Engine Code is the eighth digit from the left on the vehicle serial number plate. The vehicle serial number plate is located on the top of the driver's side of the instrument panel and can be viewed from the exterior of the car by looking through the windshield.
Std. - Standard EC - Optional at Extra Cost Req. - Required at Extra Cost N/A - Not available

EXTERIOR DIMENSIONS:

Millimetres (Inches)	Coupe
Length:.....	5232 (206.0)
Width:.....	1813 (71.4)
Height:.....	1386 (54.6)
Wheelbase:.....	2895 (114.0)
Tread: front.....	1506 (59.3)
rear.....	1524 (60.0)

INTERIOR DIMENSIONS:

Millimetres (Inches)	Coupe
Front:.....	1088 (42.8)
Legroom.....	962 (37.9)
Headroom.....	1421 (55.9)
Shoulder room.....	1245 (49.0)
Hip room.....	1363 (53.7)

Rear:

Millimetres (Inches)	Coupe
Legroom.....	987 (38.9)
Headroom.....	1421 (55.9)
Shoulder room.....	1245 (49.0)
Hip room.....	1363 (53.7)

* Your Olds dealer has fuel consumption/economy estimates based upon Transport Canada approved test methods which are available for your review.

98 REGENCY



NINETY-EIGHT

Beautiful way to experience luxury while acknowledging the realities of today.



Makes buying a luxury car logical.

You expect luxury in a 98. But economy like this? We think it's remarkable.* For 1981, Oldsmobile will offer the kind of fuel economy you probably never associated with a spacious luxury car like Ninety-Eight.

That's because a new standard 4-speed automatic transmission with overdrive combines two features which contribute to improved fuel economy.

The overdrive allows you to maintain highway speeds with substan-

tially lower engine speeds. And a torque converter clutch found on all automatic transmissions, helps provide optimum power transfer from engine to the road at highway speeds.

If you prefer, you may select the available 5.7-litre diesel V8 for added

savings on fuel. (Note: New roller hydraulic valve lifters extend oil change intervals.)

In addition, new higher-pressure, easy-roll tires and low-drag front disc brakes help increase fuel economy.

Of course, all Ninety-Eight models



A remarkable value in today's world of luxury cars.

with gasoline engines will offer the new optional Computer Command Control System that electronically helps reduce emissions while providing good fuel economy.

What you may enjoy most of all, however, is the way the Ninety-Eight

ride has been engineered to preserve its renowned smoothness on the road. That's real luxury.

And, of course, Ninety-Eight comes with all the amenities that make owning one such a pleasure. Everything from air conditioning to auto-

matic transmission to power just-about-everything! Check the list on page 13.

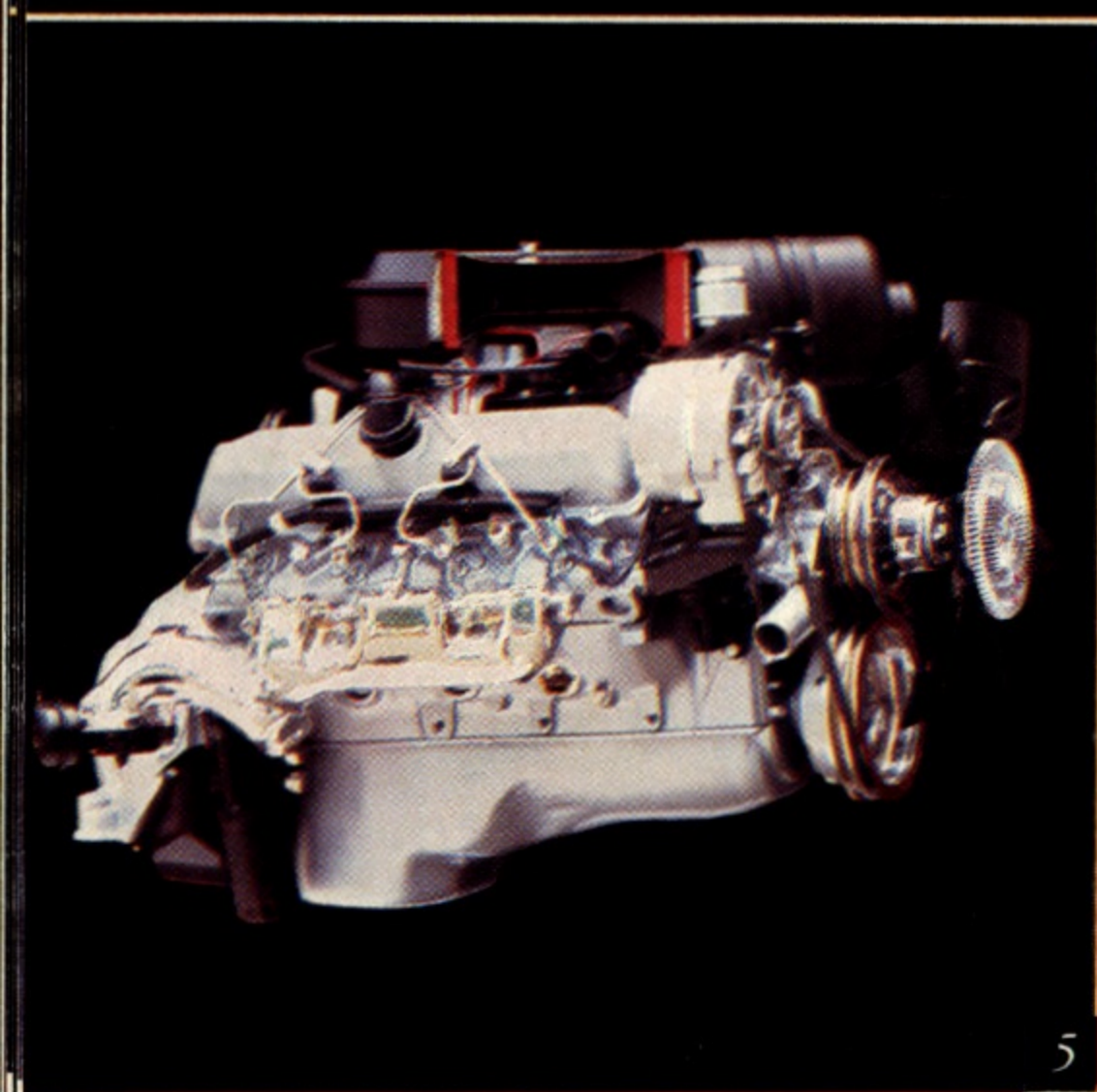
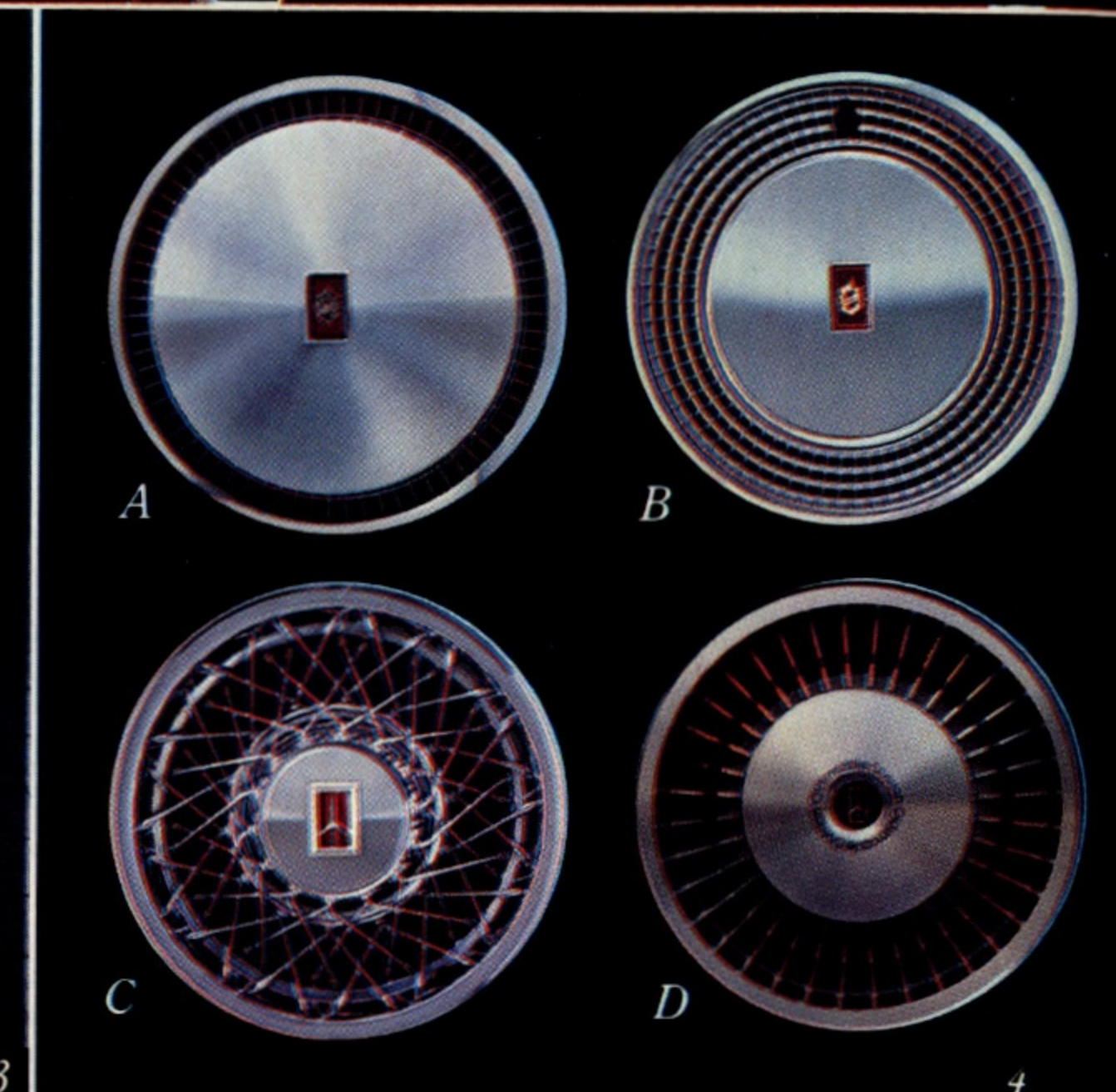
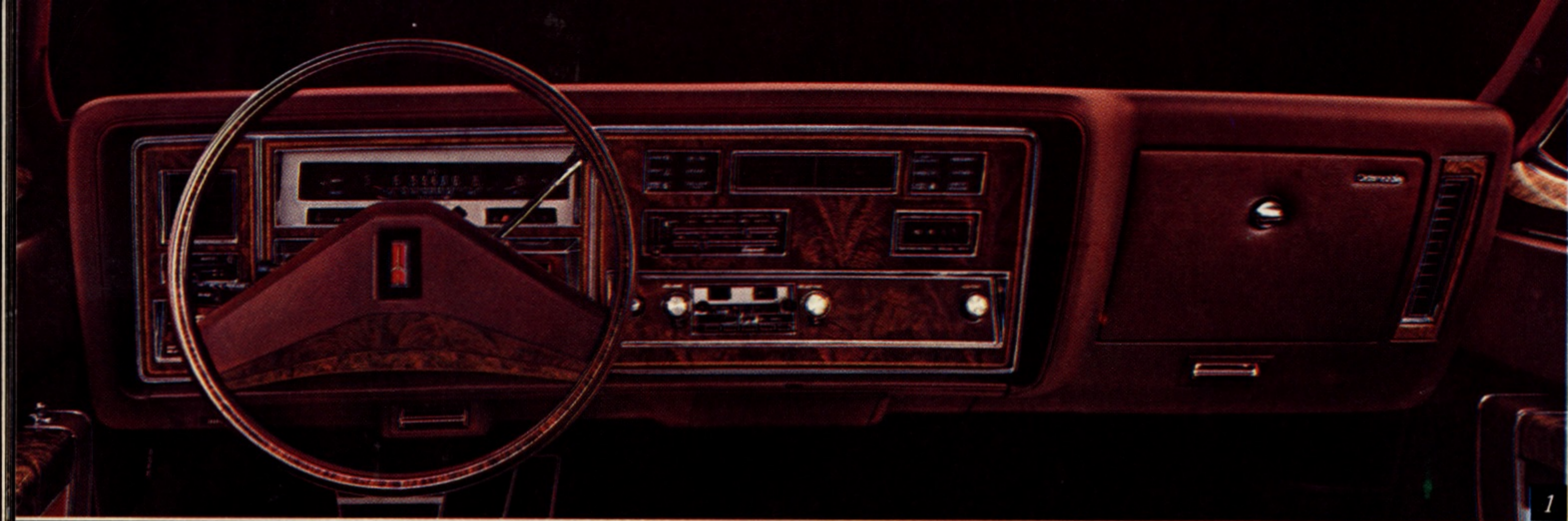
So whether you buy one or lease one, you can expect all the luxury inherent in Ninety-Eight. And fuel economy some smaller cars

would envy.

The Ninety-Eight Regency. This is the ultimate luxury Oldsmobile. Compare it to other luxury cars priced thousands of dollars higher and Regency could become your most logical choice.

*Your Olds dealer has fuel consumption/economy estimates based upon Transport Canada approved test methods which are available for your review.

*Your Olds dealer has fuel consumption/economy estimates based upon Transport Canada approved test methods which are available for your review.



Plush new velours grace the loose-pillow-look Regency interior. The front seat is divided, and power seat is standard for the driver. **The Ninety-Eight LS.** As you can see, our lowest priced Ninety-Eight sedan presents a most elegant way to

enjoy Ninety-Eight room, luxury and comfort for six—while also enjoying substantial savings on fuel. LS also provides many features you might expect to pay extra for in lesser cars—a fact which adds to its value and your enjoyment.

1. The elegant Ninety-Eight instrument panel. 2. Your investment is protected by advanced anti-corrosion technology. 3. This distinctive two-tone treatment is available in 10 colour combinations. 4. (A) Standard wheel disc (B) Deluxe

(C) Locking simulated wire (D) New aluminum road wheels. 5. 5.7-litre diesel V8 available. 6. Regency interior available with leather inserts in seating and back areas in Maple Red or Doeskin. 7. 20.5 cubic feet of trunk space.

NINETY-EIGHT STANDARD EQUIPMENT:

Chassis and body:

- Torque-beam frame ■ Computer-selected chassis springs ■ Full-coil suspension, front and rear ■ High-pressure tires with reduced rolling resistance ■ Extensive rust-resisting treatments ■ Extensive use of anti-corrosion materials ■ Special lower body Plastisol application fights stone chipping ■ Power front low-drag disc brakes ■ Power steering ■ Electronic high-energy ignition system ■ Recessed windshield wipers ■ Space-efficient trunk with compact tire and wheel: deluxe trim and spare wheel cover (Regency) ■ Side-lift frame jack ■ Bumper impact strips and bumper guards, front and rear ■ Freedom II maintenance-free battery ■ Dual remote-control mirrors ■ Rear fender skirts ■ Deluxe wheel discs and ornament ■ Mouldings: bright roof drip, rocker panel and wheel-opening

Interior:

- Full-foam seat construction throughout ■ Front and rear armrests with integral power controls ■ Four-Season air conditioner ■ Armrest bench front seat (Luxury Sedan) ■ Divided bench front seat with individual controls (Regency) ■ Cut-pile carpeting wall-to-wall plus lower door panels

- Simulated Butterfly Walnut-grain instrument panel trim ■ Electric rear window defogger ■ Cigarette lighters ■ Electric clock (digital, Regency) ■ Interior-operated hood release ■ AM-FM four-speaker stereo radio with front and rear speakers (Regency) ■ Power 2-way seat adjuster, driver side ■ Power side windows ■ Deluxe steering wheel ■ Deluxe seat belts for all passengers ■ Flo-thru ventilation ■ Head restraints ■ Day/night mirror

OTHER STANDARD EQUIPMENT:

- Engine, 5.0-litre (307 CID) V8, 4-bbl. ■ Transmission, 4-speed automatic with overdrive ■ Tires, P215/75R15 steel-belted radial-ply white-stripe ■ Sail panel opera lamp (Regency)

NINETY-EIGHT AVAILABLE EQUIPMENT:

- Powertrains, see below
- Computer Command Control (gasoline engines only)
- Six-way power seat adjuster
- Reclining seat back, passenger side
- Power door locks
- Soft-Ray tinted glass
- Power trunk-lid lock release
- Auxiliary floor mats, front and rear
- Auxiliary floor mats, front and rear with carpet inserts

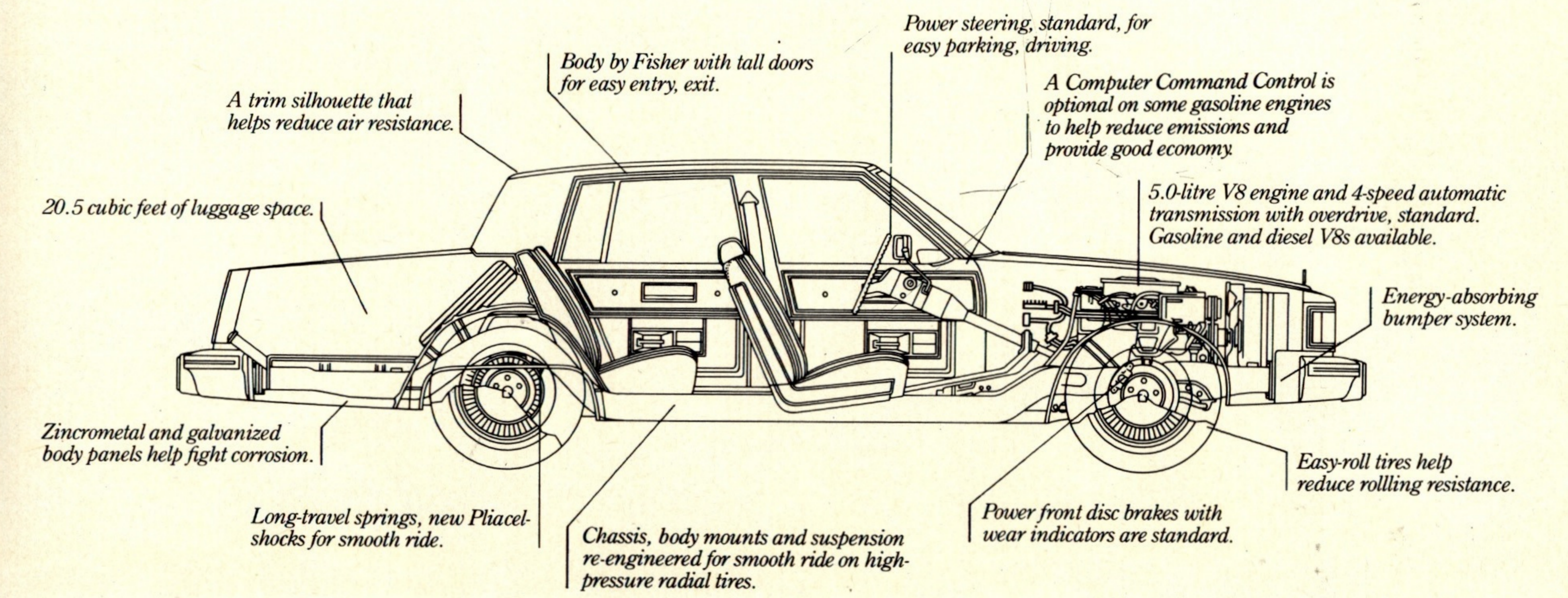
- Luggage compartment floor mat
- Body side moulding and bright door-edge guard mouldings
- Astrorof, electric sliding tinted glass panel
- Full vinyl padded rooftop covering (Sedans)
- Landau vinyl rooftop covering (Coupe)
- Pulse wiper system
- Tempmatic air conditioner
- Sail panel reading lamps (Sedans)
- Combination dome and dual lens reading lamp
- Illumination package, front door locks and interior
- Electrically operated outside mirrors driver and passenger side
- Litter container
- Illuminated visor vanity mirror, passenger side
- Outside mirror, remote control with thermometer, driver side
- Accent stripe, body side
- Limited-slip differential
- Engine block heater
- Automatic Cruise Control with resume feature
- Tilt-Away steering wheel
- Tilt-and-Telescope steering wheel
- Simulated wire wheel disc
- Simulated wire wheel disc with lock
- Cast aluminum styled wheel

- Deluxe wheel disc
- Tungsten halogen headlamps, high beam
- Twilight sentinel
- Cornering lamps
- High-capacity battery
- Digital fluorescent clock
- Digital clock (std. on Regency)
- Radio and tape players (see page 26)
- Instrument panel gauge cluster
- Trip odometer
- External lamp monitor, front and rear
- Automatic power front fender antenna
- Special Firemist exterior paints
- Custom leather interior trim (Regency)
- Convenience group, lamps and mirrors
- Reminder package, indicators and warning reminders
- Special lower body paint scheme
- Tires, P225/75R15 steel-belted radial-ply white-stripe
- Puncture-sealing tires

AVAILABLE SPECIAL USE EQUIPMENT:

- Heavy-duty suspension
- Automatic leveling system
- High-capacity Delcotron
- Heavy-duty wheels
- Trailer electrical wiring harness, 5-wire
- High-capacity engine cooling system

Ninety-Eight: Luxury, engineered with logic



NINETY-EIGHT POWER TEAMS

Engine	V.I.N. Engine Code†	Ordering Code	Displacement (Cubic inches)	Coupe	Sedan	Automatic	4 Speed	Computer Command Control System
5.0 Litre 4-Bbl. V8	Y	LV2	307	Std.	Std.	N/A	Std.	EC
5.7 Litre Diesel V8	N	LF9	350	EC	EC	N/A	N/A	N/A
4.1 Litre 4-Bbl. V6	4	LC4	252	EC	EC	N/A	Std.	Req.

EXTERIOR DIMENSIONS:

Millimetres (Inches)	Sedan
Length	5616 (221.1)
Width	1938 (76.3)
Height	1453 (57.2)
Wheelbase	3023 (119.0)
Tread: Front	1567 (61.7)
Rear	1542 (60.7)

INTERIOR DIMENSIONS:

Millimetres (Inches)	Sedan
Front: Legroom	1063 (41.9)
Headroom	968 (38.1)
Shoulder room	1550 (61.0)
Hip room	1408 (55.4)
Trunk capacity: litres (cu. ft.)	592 (20.9)

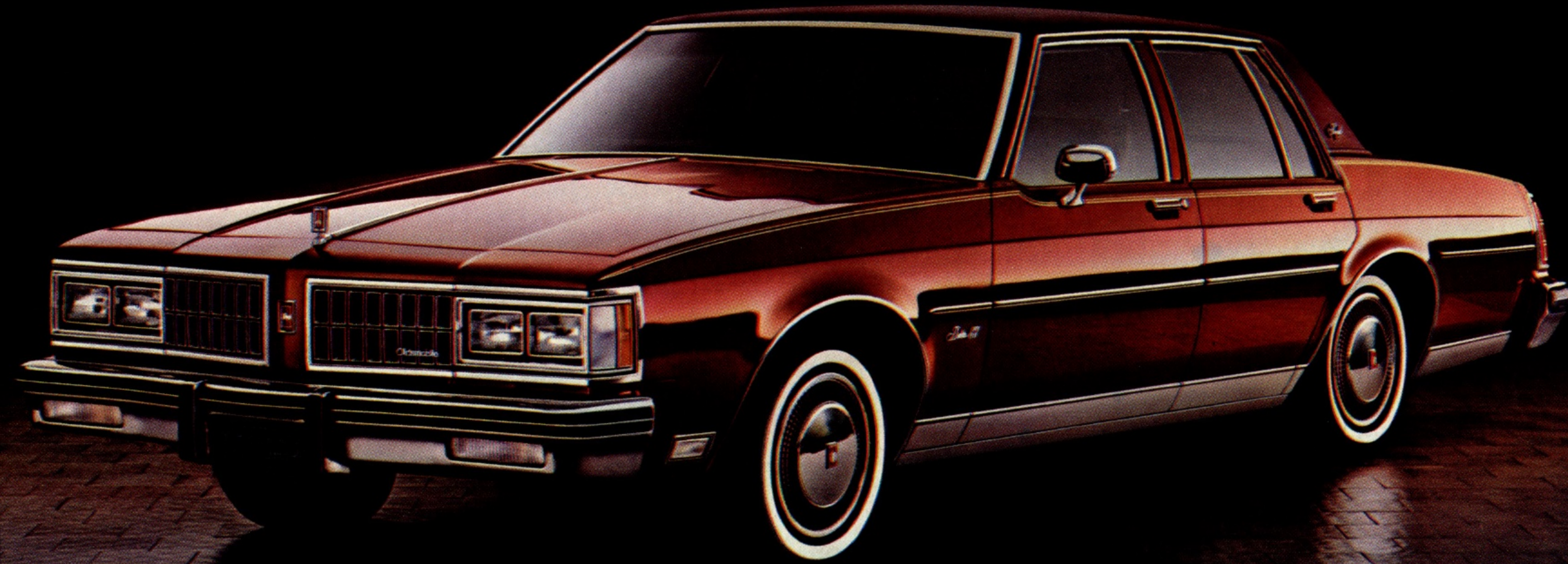
*Your Olds dealer has fuel consumption/economy estimates based upon Transport Canada approved test methods which are available for your review.

DELTA 88 ROYALE BROUGHAM



DELTA 88

The full-size car that didn't forget economy.



Get the Royale treatment in this handsome sedan.

**Just what you ordered:
Fuel efficiency in every
Delta 88.***

Would a full-size car ever forget what's important to you?

For example, would it forget your concern about operating economy?

Not our Delta 88. Here are some of the things we did to increase economy over last year's models. And it really pays off on Delta 88.

An efficient 3.8-litre V6 is now standard. But we give owners a choice, according to their needs. So

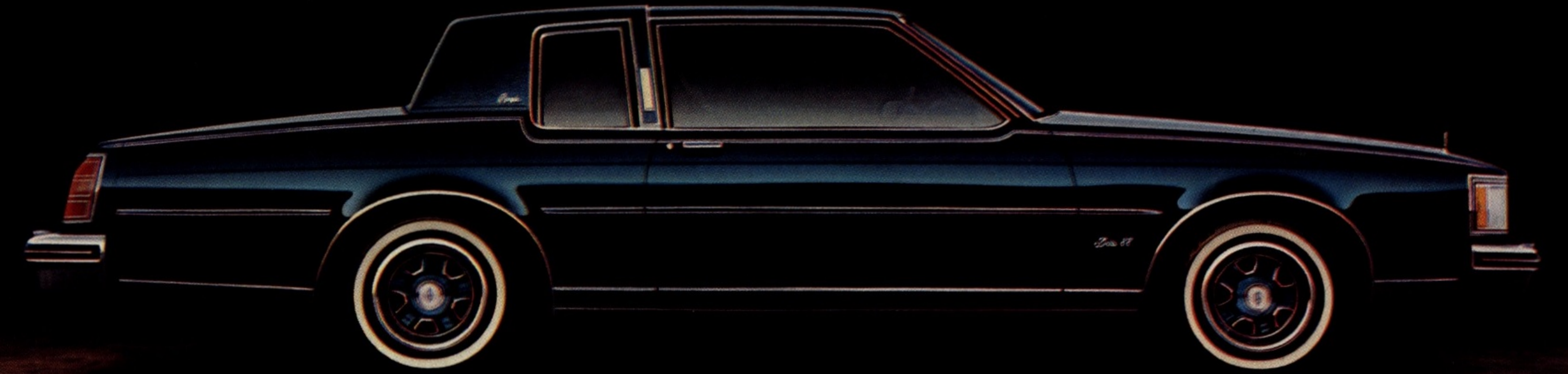
you can also order a 4.3-litre V8, a 4.4-litre V8, a 5.0-litre V8 or a 5.7-litre diesel V8. (The diesel gets especially good mileage.)

But that's only the beginning. There's a new 4-speed automatic transmission that's optional with the

5.0-litre V8. To put it simply, it means your engine doesn't have to work as hard on the highway. Result? Better economy.

There's also a torque converter clutch that's standard on all 88 models. Without going into a long

* Your Olds dealer has fuel consumption/economy estimates based upon Transport Canada approved test methods which are available for your review.



Be treated in Royale fashion in this stylish coupe.

engineering explanation, suffice it to say that it, too, contributes to economy of operation.

That also goes for the higher-pressure, easy-roll tires, the low drag front disc brakes and the more aerodynamic design of the 88.

For 1981, there's a new optional Computer Command Control System that's available on all Delta 88s with gasoline engines. What it does is monitor the air/fuel mixture electronically through an on-board computer. It reduces emissions to the lowest

point ever achieved by Oldsmobile, while providing good fuel economy at the same time.

Would a full-size car ever forget important things like room and comfort for six? A cavernous, vacation-sized trunk? A ride so smooth

and quiet it encourages conversation? Not our Delta 88.

Would it forget things that make a Delta 88 so nice to drive? Power steering? Power front disc brakes? Automatic transmission? Of course not. They're all standard.

* Your Olds dealer has fuel consumption/economy estimates based upon Transport Canada approved test methods which are available for your review.

DELTA 88 HOLIDAY



Our bucket-seating, T-bar shifting, sporty-driving 88.

Finally, it doesn't forget you paid hard earned money to buy your 88 and protects your investment—and future resale—with extensive anti-corrosion protection.

We've had one built for you. All you have to do is decide which of our seven

Delta 88s it will be. Then just sit back and enjoy, enjoy, enjoy!

Delta 88 Royale Broughams.

You are going to be pampered in style in these Brougham beauties. The sumptuous velour fabrics are smartly tailored into a fashionable loose-

pillow-look design. The front seat is divided so driver and passenger may each individually adjust their side for personalized comfort. And you can order an interior with genuine leather inserts in the seats and backs.

Delta 88 Royales. These are our

most popular 88s, and you can easily see why. Their sleek looks and handsome interiors make them full-size favourites all across the country. Available in both coupe and sedan versions, they give plenty of headroom, legroom and knee room.

DELTA 88



The family car where value is the name of the game.

They're magnificently detailed, deeply cushioned and provide a beautiful setting for a family like yours.

Delta 88 Holiday. Start out with generously sized bucket seats contoured for support. Slip a console between them so the T-bar shifter

comes close to hand. Add a custom sport steering wheel, colour coordinated dual sport mirrors and painted wheel disc. What you have is a man-sized sports coupe born for the road.

Naturally, you can add your own touches to make your Holiday still

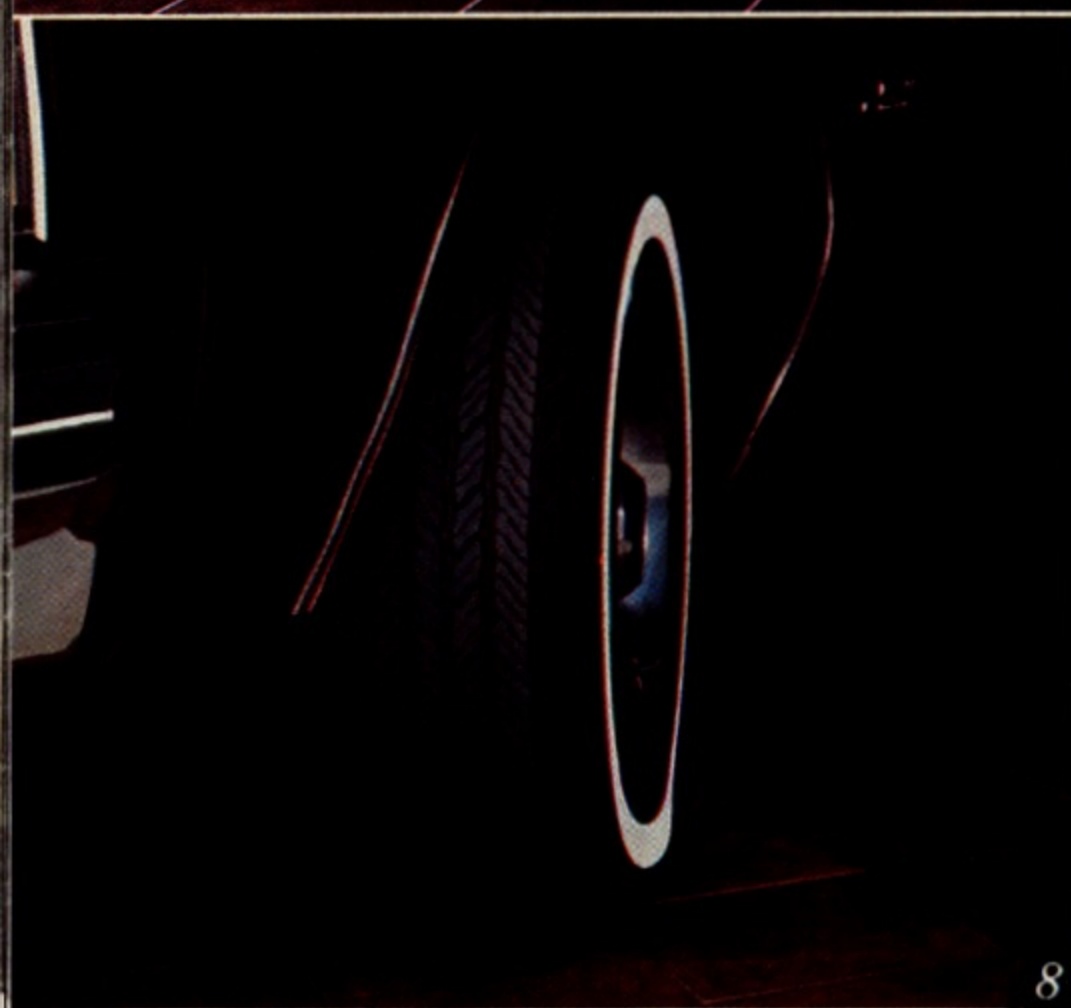
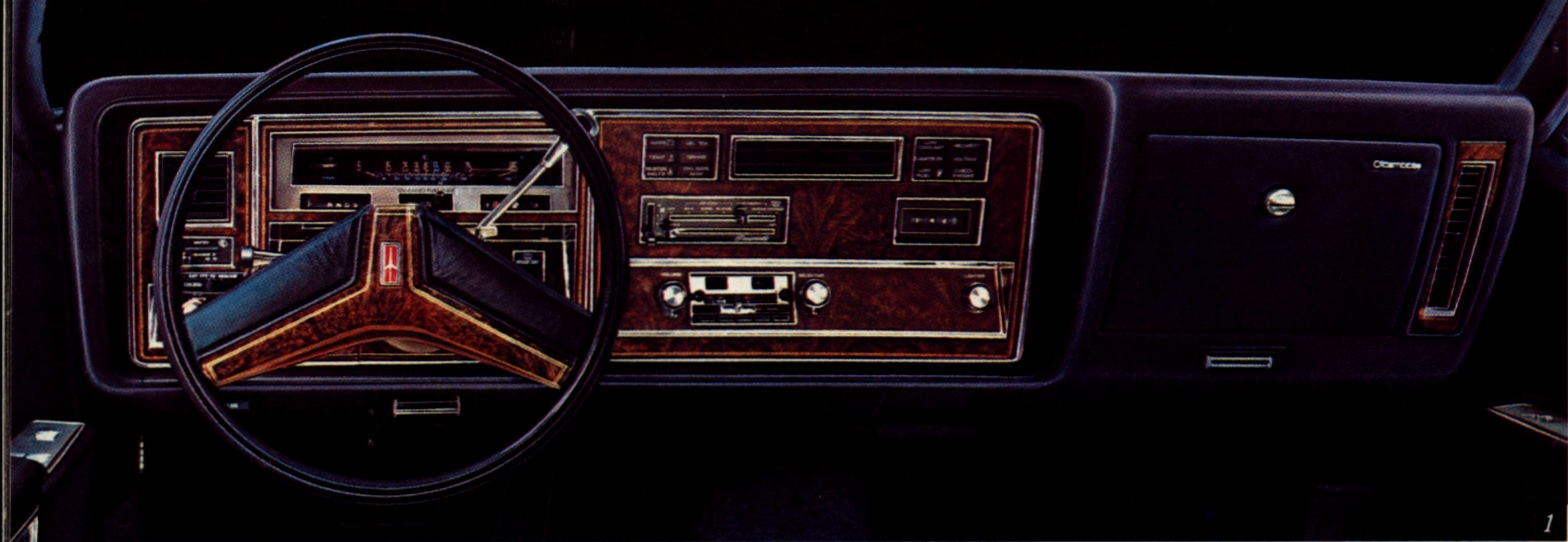
sportier. Like the tinted-glass Astroroof, firm ride and handling suspension package, a body-side paint scheme.

Delta 88s. When it comes to basic full-size car value, these 88s take a back seat to no one. Compare them

with their dollar-for-dollar competition and you'll see what we mean.

* Your Olds dealer has fuel consumption/economy estimates based upon Transport Canada approved test methods which are available for your review.

* Your Olds dealer has fuel consumption/economy estimates based upon Transport Canada approved test methods which are available for your review.

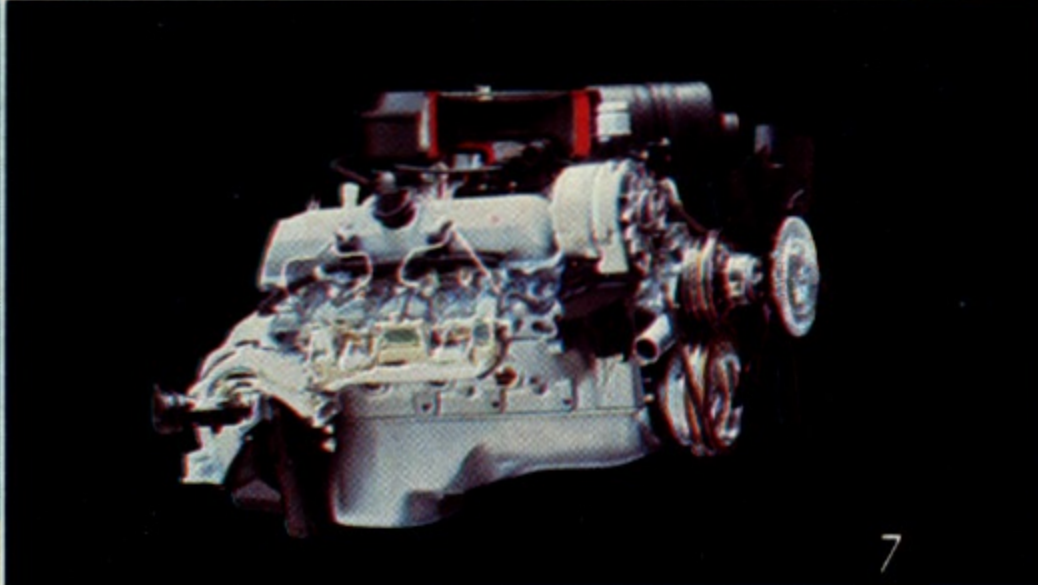
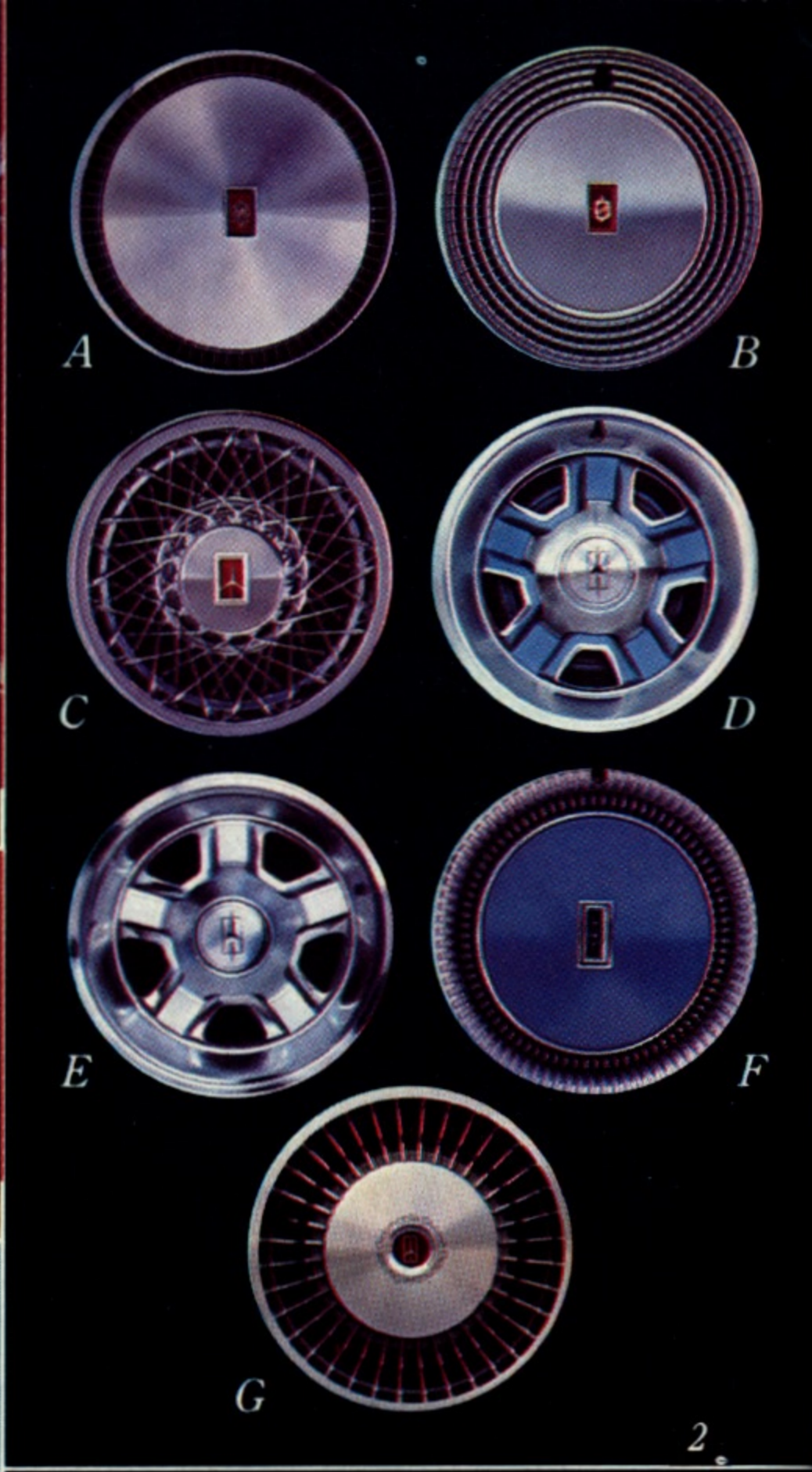


Compare it for price, value, quality, engineering and resale value. Then you'll understand why Delta 88 has been North America's fastest growing full-size car over the past five years. It's a lot of car for the money. A lot of car for your family.

1. The Delta 88 command post: clean, elegant, efficient. 2. 88 wheels and discs: (A) Standard disc (B) Deluxe disc (C) Simulated wire disc (D) Super Stock III wheel with matching body colour (E) Custom sport wheel (F) Deluxe colour keyed disc for Holiday Coupe (G) New aluminum road wheel. 3. Aerodynamic

design of Delta 88 contributes to fuel economy. 4. Freedom II maintenance-free battery. You don't have to do a thing. 5. 3.8-litre V6 is standard. So are the savings. 6. Extensive use of zinc-rich primers, wax sealers and anti-corrosion metals help provide protection against rust. 7. Diesel V8 fuel economy is

available in every Delta 88 model. 8. Easy-roll tires reduce rolling resistance. 9. Genuine leather inserts for seats and seat backs are available in the Royale Brougham, with divided front seat standard. 10. Yes, all the luggage fits into the trunk—21.8 cubic feet of usable trunk space.



DELTA 88 STANDARD EQUIPMENT—All Models:

Chassis and body:

- Full torque-beam frame construction
- Computer-selected chassis springs
- Full coil suspension, front and rear
- Body designed to reduce aerodynamic drag
- High-pressure tires with reduced rolling resistance
- Extensive applications of new anti-corrosion materials
- Special lower body Plastisol application fights stone chipping
- Power front disc brakes
- Power steering
- Electronic high-energy ignition system
- Recessed windshield wipers
- Space-efficient trunk with compact spare tire and wheel
- Side-lift jack location
- Bumper impact strips and bumper guards, front and rear
- Freedom II maintenance-free battery
- Front-end panel stand-up ornament
- Full wheel discs
- Driver side outside rearview mirror
- Bright rocker panel and wheel-opening mouldings
- Roof drip mouldings
- Lock pillar applique moulding (Coupe)

Interior:

- Full-foam seat construction
- Armrests, front and rear
- Cut-pile wall-to-wall carpeting
- Simulated Butterfly Walnut-grain instrument panel trim
- Deluxe steering wheel
- Electric rear window defogger
- Door actuated courtesy lamps
- Cigarette lighter
- Bright accents on accelerator and brake pedals
- Inside day-night rearview mirror
- Interior-operated hood lock release
- Dual front seat head restraints
- Seat belts for all passenger positions
- Flo-thru ventilation
- Bench front seat in choice of cloth or vinyl

STANDARD EQUIPMENT BY MODEL:

Delta 88 Royale Brougham:

- Engine, 3.8-litre (231 CID) V6, 2-bbl.
- Transmission, 3-speed fully automatic column shift
- Tires, P205/75R15 steel-belted radial-ply blackwall
- Mouldings: belt reveal, body side
- Lock pillar opera lamp (Coupe)
- Divided bench seat with individual controls, in velour

Delta 88 Royale:

- Engine, 3.8-litre (231 CID) V6, 2-bbl.
- Transmission, 3-speed fully automatic column shift
- Tires, P205/75R15 steel-belted radial-ply blackwall
- Mouldings: body side
- Custom sport bench seat with fold-down centre armrest in velour

Delta 88 Holiday Coupe:

- Contour bucket front seats
- Sport console with T-bar shifter
- Custom sport steering wheel
- Dual sport mirrors
- Painted wheel discs
- Specific Holiday identification

Delta 88:

- Engine, 3.8-litre (231 CID) V6, 2-bbl.
- Transmission, 3-speed fully automatic column shift
- Tires, P205/75R15 steel-belted radial-ply blackwall

DELTA 88 AVAILABLE EQUIPMENT

- V8 powertrains, see below
- 6-way power seat adjuster, bucket seat only—driver side (Holiday Coupe)
- Deluxe seat belts—colour-keyed to interior
- 6-way power seat adjusters, driver and passenger sides with divided seat only (Royale and Royale Brougham)

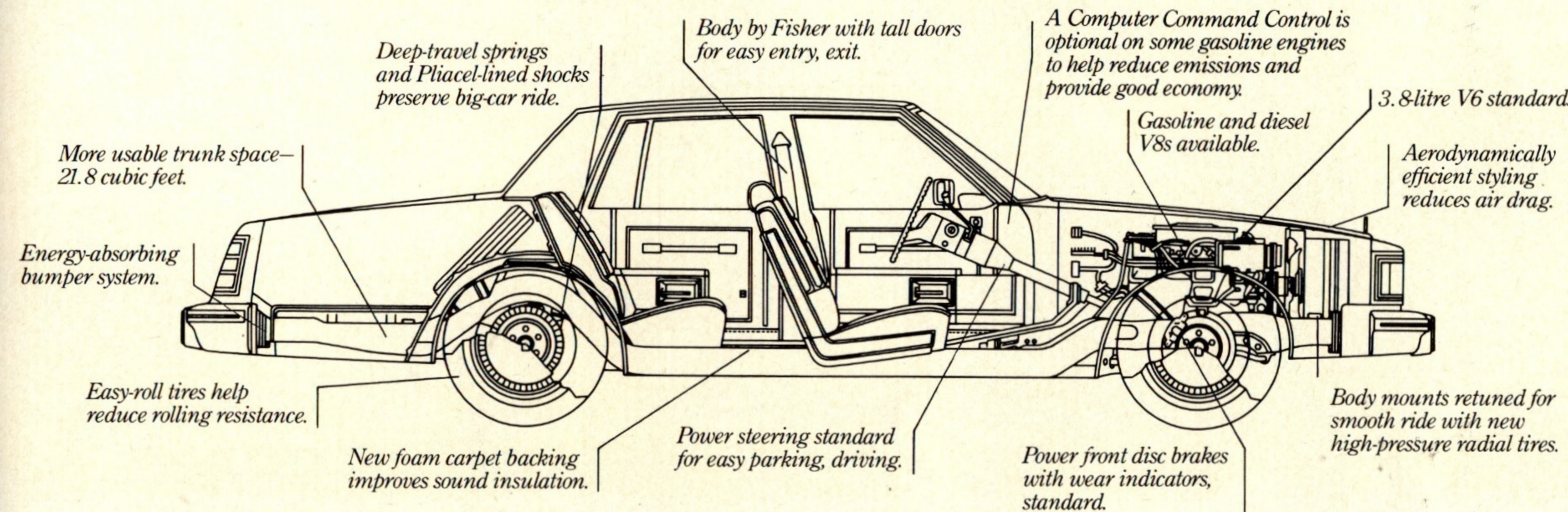
- Divided front seat with individual controls (Royale and Royale Brougham)
- Reclining seat back—passenger side
- Power door locks
- Soft-Ray tinted glass
- 6-way power seat adjuster—bench seat
- Electric trunk-lid lock release
- Lower body side mouldings
- Auxiliary floor mats, front and rear—with carpet inserts if desired
- Luggage compartment rubber floor mat
- Deluxe trunk trim and spare tire cover
- Mouldings: body side and bright door-edge guards; belt reveal (Royale)
- Electric tinted glass Astrorof
- Pulse wiper system
- Padded vinyl landau rooftop covering (Coupes) or full vinyl covering (Sedans)
- Four-Season or Tempmatic air conditioner
- Lock pillar opera lamp (Coupes only)
- Combination dome, dual reading lamps
- Front door locks and interior illumination package
- Mirrors, outside remote control, driver side only, passenger side manual; electrically operated, driver and passenger sides
- Litter container
- Upper body accent stripe
- Limited-slip differential
- Engine block heater
- Automatic Cruise Control
- Tilt-Away or Tilt-and-Telescope steering
- Super-Stock III wheels, colour-matched to body
- Custom chrome sport wheels
- Cast aluminum road wheels

- Simulated wire wheel discs, regular or with locks
- Tungsten halogen headlamps—high beams
- Cornering lamps
- High-capacity battery
- Theft-deterrent system
- Electric clocks: regular, digital or digital fluorescent
- Radio and tape players (see page 26)
- Automatic front fender antenna (a radio must be ordered)
- Instrument panel gauge cluster
- Trip odometer
- External lamp monitor, front and rear
- Convenience group, lamps and mirror
- Custom leather trim (Royale Brougham)
- Special indicator reminder package
- Special lower body paint scheme
- Holiday Coupe package (Delta 88 only)
- Tires, P205/75R15 steel-belted radial-ply white-stripe
- Tires, P215/75R15 steel-belted radial-ply white-stripe
- Puncture-sealing tires

AVAILABLE SPECIAL USE EQUIPMENT:

- Suspension package
- Automatic leveling system
- High-capacity Delco-tron
- Heavy-duty wheels
- Special trailer electrical wiring harness
- High-capacity cooling system
- Heavy-duty engine cooling system

Delta 88: Built and backed with a great engineering heritage.



DELTA 88 POWER TEAMS

Engine	V.I.N. Engine Code†	Ordering Code	Displacement (Cubic inches)	Coupe	Sedan	Automatic	4-Speed Automatic	Computer Command Control System Opt. N81
3.8 Litre 2-Bbl. V6	A	LD5	231	Std.	Std.	Std.	N/A	N/A
4.3 Litre 2-Bbl. V8	F	LV8	260	EC	EC	Std.	N/A	Req.
4.4 Litre 2-Bbl. V8	J	L39	267	EC	EC	Std.	N/A	N/A
5.0 Litre 4-Bbl. V8	Y	LV2	307	EC	EC	Std.	EC*	Req.
5.7 Litre Diesel V8	N	LF9	350	EC	EC	Std.	N/A	N/A

(A) Produced by GM—Buick Motor Division, U.S.A.
(F,N,Y) Produced by GM—Oldsmobile Motor Division, U.S.A.
(J) Produced by GM—Chevrolet Motor Division, U.S.A. and by GM of Canada

Exterior Dimensions (Inches)	Sedan
Length	5540 (218.1)
Width	1938 (76.3)

Interior Dimensions (Inches)	Sedan
Front: Legroom	1072 (42.2)
Headroom	1003 (39.5)
Shoulder room	1544 (60.9)
Hip room	1398 (55.0)
Rear: Legroom	993 (39.1)
Headroom	970 (38.2)
Shoulder room	1544 (60.9)
Hip room	1405 (55.3)
Trunk capacity: litres (cu. ft.)	617 (21.8)

Exterior Dimensions (Inches)	Sedan
Height	1440 (56.7)
Wheelbase	2946 (116.0)
Tread:	
Front	1567 (61.7)
Rear	1542 (60.7)
Wheel size—std.	15" x 6"
Tire size—std.	P205/75R15
Curb weight: kg (lbs.)	1617 (3563)
Fuel tank capacity: litres (gals.)	95 (20.9)
Gasoline	95 (20.9)
Diesel	102 (22.4)

* Your Olds dealer has fuel consumption/economy estimates based upon Transport Canada approved test methods which are available for your review.

CUSTOM CRUISER



CUSTOM CRUISER

The features you expect in a wagon, the qualities you expect in an Oldsmobile.



CUSTOM CRUISER



Custom Cruiser. It has a great capacity for luxury. With velour upholstery (at no extra charge), plush carpeting from front wall to rear tailgate, Custom Cruiser is as elegant inside as many a luxurious sedan. But with all

the versatility, the cargo-carrying capacity (87.2 cubic feet) you expect in a practical-minded station wagon. **Long on economy, too.*** A 5.0-litre V8 and automatic transmission are standard. If you'd like still more miles per gallon, Custom Cruiser

offers an available 4-speed automatic transmission with overdrive or a diesel V8.

1. Handsome, all-vinyl upholstery (or vinyl and cloth combination) is also available—no extra charge. 2. 87.2 cubic feet of cargo room, with the second seats down—and

the rear opening is over 4 feet wide. 3-way tailgate opens down, opens to side, for easy access. 3. Lockable hideaway for small valuables. 4. Fold-down third seat available to provide 8-passenger capacity. 5. Our available diesel V8 means more miles per gallon.

CUSTOM CRUISER STANDARD EQUIPMENT:

Chassis and body:

- Electronic high-energy ignition system
- Power brakes with front discs ■ Power steering
- Full-coil suspension, front and rear
- Torque-beam full frame ■ High-pressure tires with reduced rolling resistance
- Heavy-duty wheels ■ Bumper impact strips plus front and rear guards with inserts
- Extensive anti-corrosion materials and treatments and sound deadeners
- Special lower body Plastisol application fights stone chipping
- Freedom II maintenance-free battery
- Rear storage compartment with lock
- Spare tire extractor
- Side-frame jacking system
- Transmission, 3-speed fully automatic with torque-converter-clutch

Interior:

- Armrest bench front seat
- Full-foam cushions throughout
- Electric rear window defogger
- Cut-pile carpeting, lower door panels plus cargo area
- Simulated Butterfly Walnut-grain instrument panel trim
- Warning lamp when tailgate is ajar
- Driver-controlled electric tailgate window
- Three-way tailgate operation
- Cigarette lighter
- Interior-operated hood lock release
- Instrument panel courtesy lamps and automatic switches
- Seat belts for all

passenger positions ■ Rear seat fold-down provision ■ Deluxe steering wheel ■ Flo-thru ventilation ■ Head restraints

ADDITIONAL STANDARD EQUIPMENT:

- Engine, 5.0-litre (307 CID) V8, 4-barrel
- Transmission, 3-speed fully automatic
- Mouldings: bright roof drip, bright side window, wheel-opening and rocker panels, belt reveal
- Tires, P225/75R15 steel-belted radial-ply blackwall
- Deluxe wheel discs

CUSTOM CRUISER AVAILABLE EQUIPMENT

- Power trains, see below
- Computer Command Control (gasoline engine only)
- 6-way power seat adjuster, driver side with divided seat
- 6-way power seat adjuster, passenger side with divided seat
- Deluxe seat belts, colour-matched to interior
- Divided front seat with individual controls
- Rear-facing third seat, includes rear bumper step
- Reclining seat back, passenger side
- Power door locks, includes tailgate lock
- Soft-Ray tinted glass
- Power side windows
- Lower body side mouldings
- Body side and tailgate Walnut-grain vinyl panels

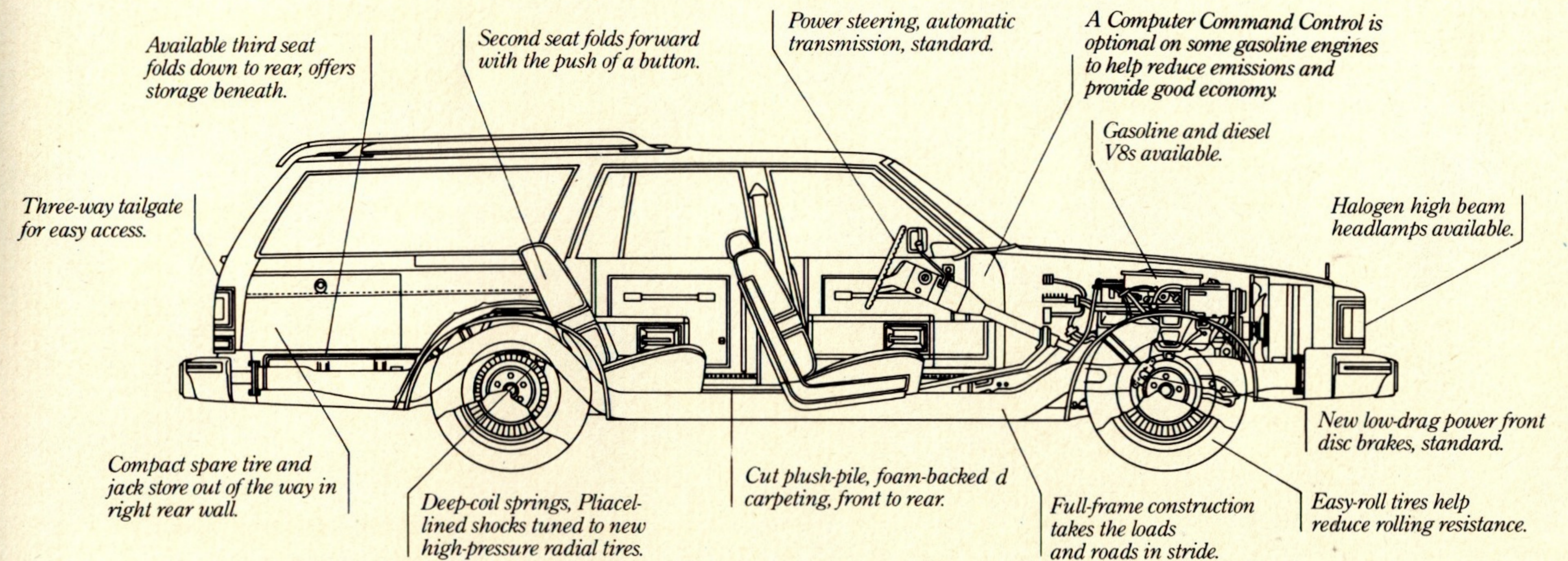
- Auxiliary floor mats, front and rear
- Auxiliary floor mats, front and rear with carpet inserts
- Body side mouldings
- Bright door-edge guard mouldings
- Pulse wiper system
- Four-Season air conditioner
- Tempmatic air conditioner
- Combination dome and dual-lens reading lamp
- Illuminated package, door locks and interiors
- Mirror, remote control outside, passenger side
- Mirrors, electrically operated outside rearview, driver and passenger sides
- Mirror, remote control outside, driver side
- Mirror, sport-styled remote control outside, driver side; passenger side manual
- Mirror, illuminated visor vanity passenger side
- Mirrors, sport-styled outside remote control, driver and passenger sides
- Litter container
- Limited-slip differential
- Engine block heater
- Automatic Cruise Control
- Tilt-Away steering wheel
- Tilt-and-Telescope steering wheel
- Simulated wire wheel discs
- Simulated wire wheel discs with lock

- Cast aluminum road wheels
- Deluxe wheel disc
- Tungsten halogen headlamps, high beams
- Cornering lamps
- High-capacity battery
- Digital fluorescent electric clock
- Digital electric clock
- Electric clock
- Radio and tape players (see page 26)
- Automatic power front fender antennas (a radio must be ordered)
- Radio speakers, rear seat, single and dual (a radio must be ordered)
- Rear bumper step, included in third seat package
- Rooftop luggage carrier, includes rear window air deflector
- Convenience group, lamps and mirrors
- Reminder package, indicators
- Tires, P225/75R15 steel-belted radial-ply white-stripe
- Puncture-sealing tires

AVAILABLE SPECIAL USE EQUIPMENT:

- Heavy-duty suspension system
- Automatic leveling system
- High-capacity Delcotron
- Trailer electrical wiring harness—5-wire
- High-capacity engine cooling system

Under the luxury, solidly engineered for sedan-like comfort.



CUSTOM CRUISER POWER TEAMS

Engine	V.I.N.	Ordering Code	Displacement (Cubic inches)	Custom Cruiser	Transmission	4-Speed*	Computer Command Control System
5.0 Litre 4-Bbl. V8	Y	LV2	307	Std.	Std.	EC	EC
5.7 Litre Diesel V8	N	LF9	350	EC	Std.	N/A	N/A

(N.Y.) Produced by GM—Oldsmobile Motor Division, U.S.A.
 * V.I.N. (Vehicle Identification Number) Engine Code is the eighth digit from the left on the vehicle serial number plate. The vehicle serial number plate is located on the top of the driver's side of the instrument panel and can be viewed from the exterior of the car by looking through the windshield.
 Std.—Standard EC—Optional at Extra Cost N/A—Not available
 *Computer Command Control (Opt. N81) must be ordered

EXTERIOR DIMENSIONS:

Millimetres (Inches)	Custom Cruiser
Length	5596 (220.3)
Width	2027 (79.8)
Height	1486 (58.5)
Wheelbase	2946 (116.0)
Tread: Front	1577 (62.1)
Tread: Rear	1628 (64.1)
Wheel size—std.	15" x 7"

Tire size—std.

P225/75R15	1825 (40.24)
Curb weight: kg (lbs)	1825 (4024)
Fuel tank capacity: litres (gals.)	83 (18.3)
Gasoline	102 (22.4)
Diesel	

INTERIOR DIMENSIONS:

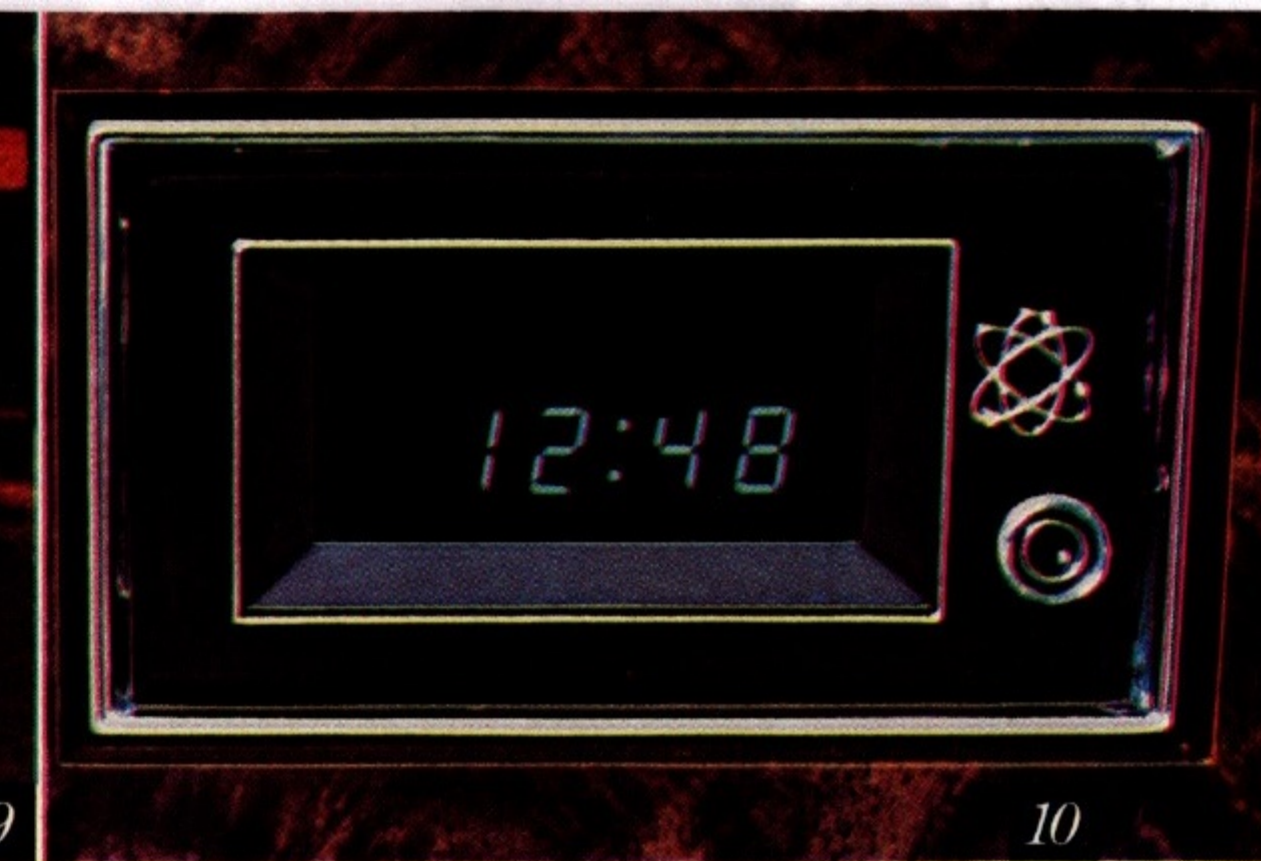
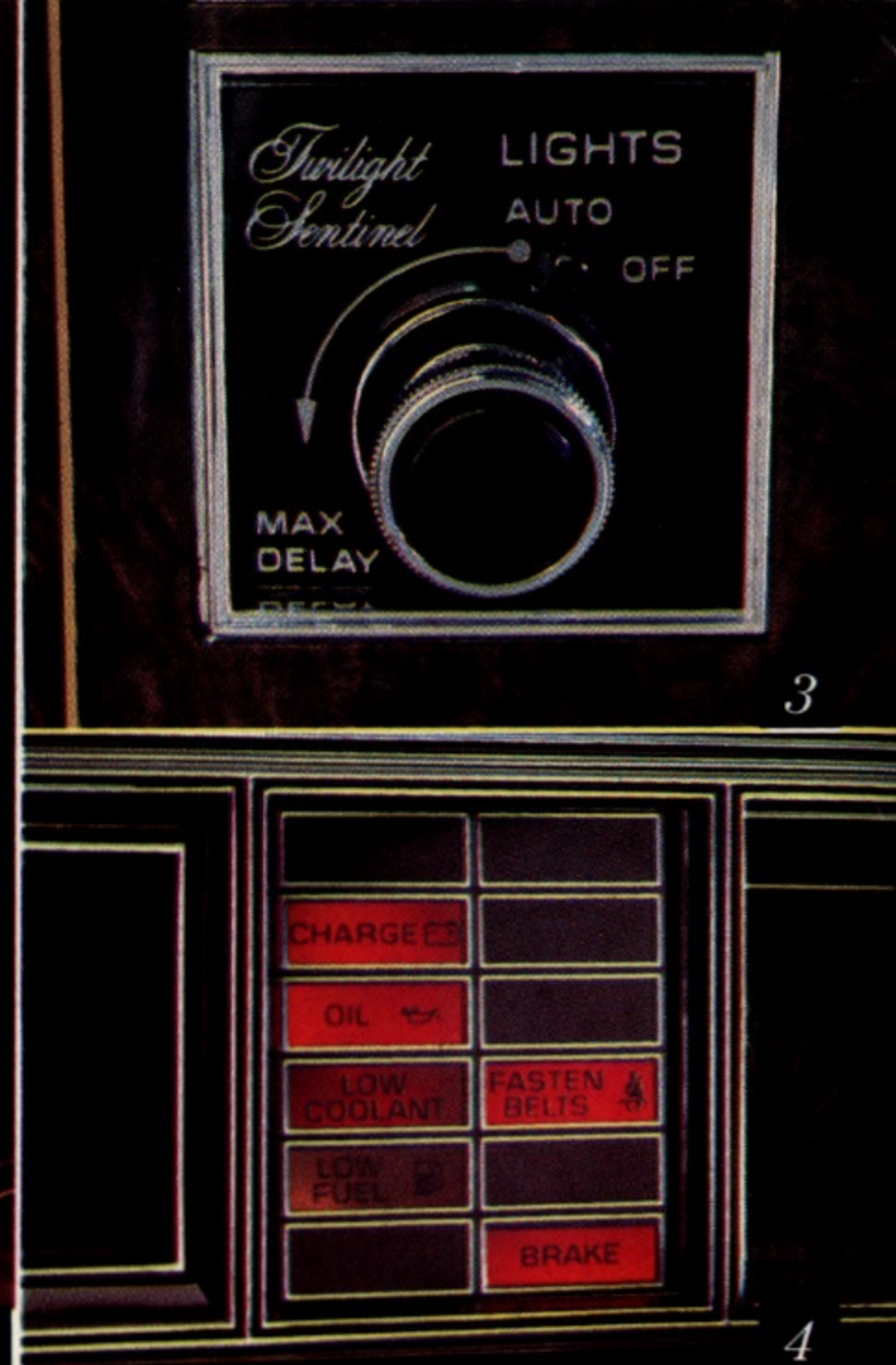
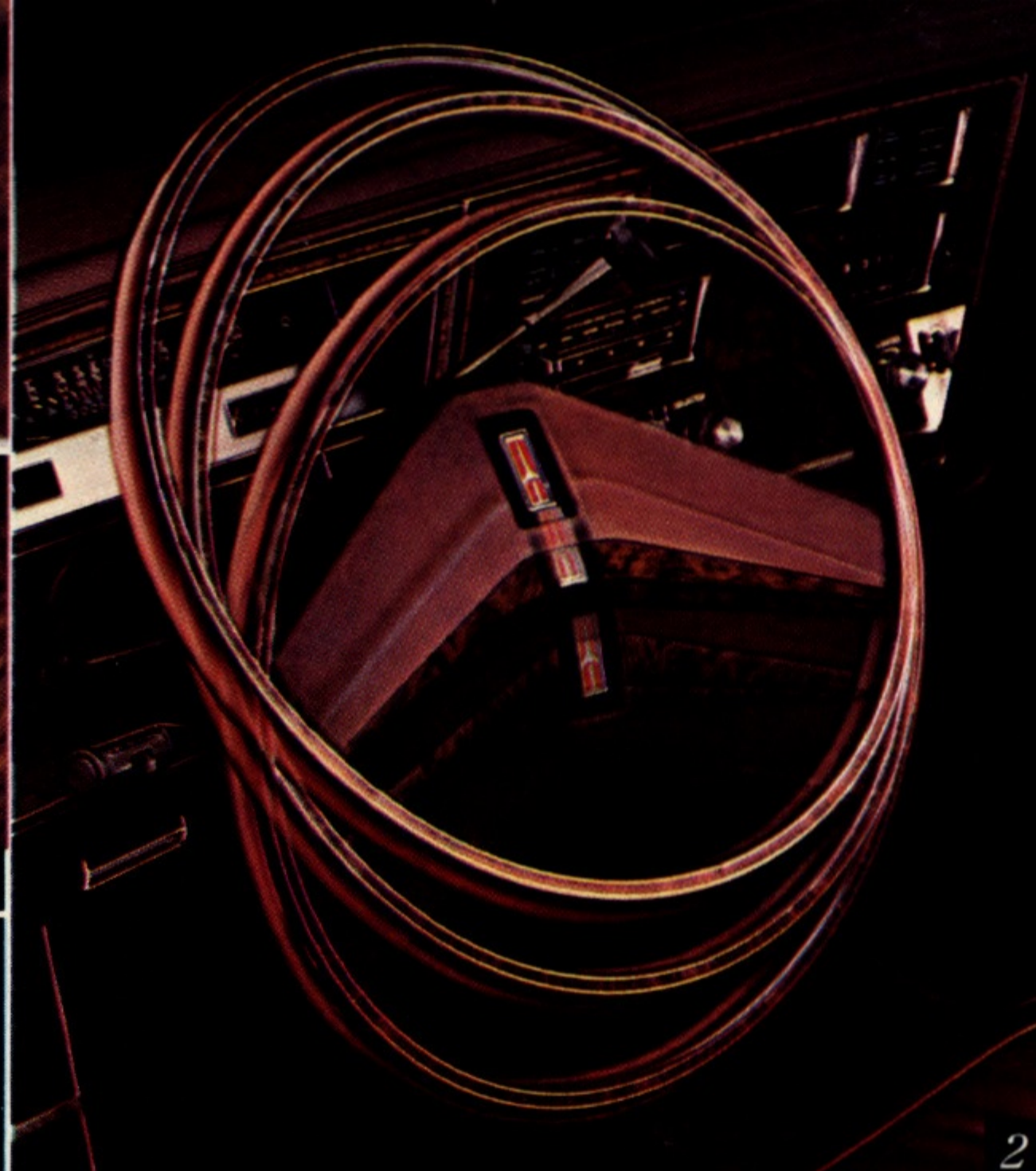
Millimetres (Inches)	Custom Cruiser
Legroom	960 (37.8)
Headroom	999 (39.3)
Shoulder room	1536 (60.5)
Hip room	1398 (55.0)

Cargo Area

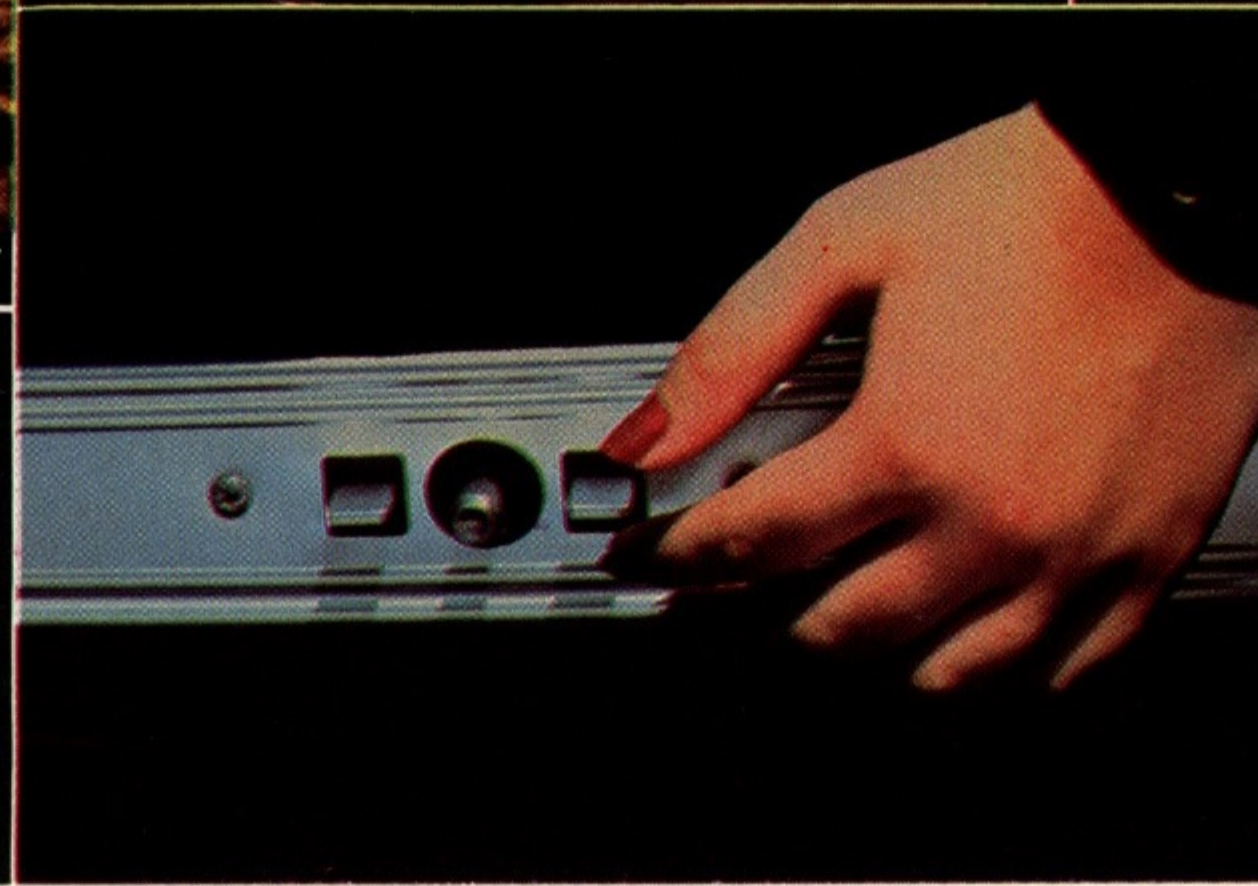
Max. Cargo area: litres (cu. ft.)	2469 (87.2)
Max. floor length	2291 (90.2)
Floor length, 2nd seat up	1407 (55.4)
Min. width at floor	2129 (83.8)
Rear opening width	1224 (48.2)
Max. rear opening height	729 (28.7)
Cargo height inside	754 (29.7)

*Your Olds dealer has fuel consumption/economy estimates based upon Transport Canada approved test methods which are available for your review.

*Your Olds dealer has fuel consumption/economy estimates based upon Transport Canada approved test methods which are available for your review.



DELCO-GM PREMIUM RADIOS	Toro	98	88	Cruiser
AM-FM Stereo Pushbutton with Stereo Tape Player	A	A	A	A
AM-FM Electronically Tuned Stereo Pushbutton with Digital Clock and Stereo Tape Player	A	A	NA	NA
Same as above but with 40-Channel CB	A	A	NA	NA
Same as above but with Cassette Tape Player instead of CB Radio	A	A	NA	NA
AM-FM Electronically Tuned Stereo Pushbutton with Digital Clock	A	A	A	A
AM-FM Stereo Pushbutton with Cassette Tape Player	A	A	A	A
AM-FM Electronically Tuned Stereo Pushbutton with Digital Clock, Cassette Tape Player, 40-Channel CB, Power Fender Antenna	A	A	NA	NA
AM-FM Stereo Pushbutton with 40-Channel CB, Power Fender Antenna	A	A	A	A
AM-FM Stereo Pushbutton	S	S Regency	A	A
AM Pushbutton	NA	A LS	A	A
AM-FM Monaural Pushbutton	NA	A LS	A	A



Continuous Protection Plan



Personal touches available on the Olds that's built for you.
1. Radios? Check list above. 2. Tilt-Wheel. 3. Twilight Sentinel. 4. Reminder lights. 5. Puncture Sealant Tire. Special rubber compound inside tread area seals 90% of all repairable tread punctures that are 3/16" or less. 6. Cruise Control with resume-speed

feature. (Left, 88, 98. Right, Toronado.) 7. Theft deterrent package. 8. Reclining front seat. 9. Halogen high-beam headlamps. 10. Fluorescent digital clock. 11. Delay-interval pulse wipers. 12. Cornering lamps. 13. Fiber-optic lamp monitors. 14. Lighted visor vanity mirror. 15. Power antenna. 16. Illumination package lightens your entry.

17. Tempmatic air conditioning. 18. Takes care of your Olds during and after new vehicle limited warranty. 19. Six-way power seat. 20. Electric sliding sunroof, reduces headroom slightly. Additional options listed on pages 7, 13, 21, 25.

Standard accident-avoidance features: Side marker lights and reflectors □ Parking lamps that illuminate with headlamps □ Four-way hazard warning flasher □ Backup lights □ Lane change feature in direction signal control □ Windshield defrosters,

washer and dual speed wipers □ Vinyl-edged inside mirror □ Outside rearview mirror □ Dual master cylinder brake system with warning light □ Starter safety switch □ Dual action safety hood latches.

Standard built-in anti-theft features: Anti-theft ignition key reminder buzzer □ Anti-theft steering column lock. **Standard occupant-protection features:** Manual lap belts with push-button buckles for rear and centre front (when applicable) passenger

positions □ Manual lap/shoulder belts for driver (with reminder light and buzzer) and right front passenger □ Energy-absorbing steering column □ Passenger guard door locks □ Safety door latches and stamped steel hinges □ Folding seat back latches

□ Energy-absorbing padded instrument panel and front seat back tops □ Laminated windshield/tempered side and rear glass □ Safety armrests □ Identification symbols for controls and displays.

NOTE: Availability of optional equipment varies by model. Check your Olds dealer for details.

There's an Olds that's built for you. Just pick one.

CUTLASS



CUTLASS SUPREME BROUGHAM COUPE



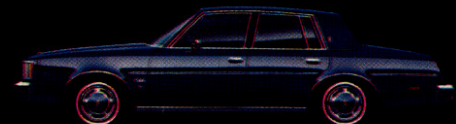
CUTLASS SUPREME COUPE



CUTLASS CALAIS COUPE



CUTLASS BROUGHAM SEDAN



CUTLASS LS SEDAN



CUTLASS SEDAN

CUTLASS CRUISER



CUTLASS CRUISER BROUGHAM (1)



CUTLASS CRUISER

OMEGA



OMEGA BROUGHAM COUPE



OMEGA BROUGHAM SEDAN (2)



OMEGA COUPE (3)



OMEGA SEDAN

TORONADO



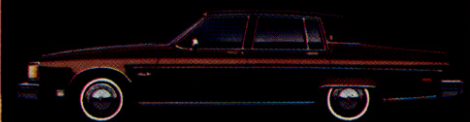
TORONADO BROUGHAM COUPE (4)



98 REGENCY COUPE



98 REGENCY SEDAN



98 LUXURY SEDAN

DELTA 88



DELTA 88 ROYALE BROUGHAM COUPE



DELTA 88 ROYALE BROUGHAM SEDAN



DELTA 88 ROYALE COUPE



DELTA 88 ROYALE SEDAN



DELTA 88 COUPE (5)



DELTA 88 SEDAN

CUSTOM CRUISER



CUSTOM CRUISER (1)

- (1) WITH AVAILABLE WOOD-GRAIN VINYL
- (2) ES PACKAGE AVAILABLE
- (3) SPORT OMEGA OR SX PACKAGE AVAILABLE
- (4) XSC PACKAGE AVAILABLE
- (5) 88 HOLIDAY PACKAGE AVAILABLE



Printed colours are approximates only and may vary from actual car paint colours. Printed in Canada 9/80

1981 OLDSMOBILE EXTERIOR COLOURS ON ALL MODELS

WHITE

SILVER METALLIC

BLACK

LIGHT
BLUE METALLIC

DARK
BLUE METALLIC

SANDSTONE BEIGE

MEDIUM
SANDSTONE
METALLIC

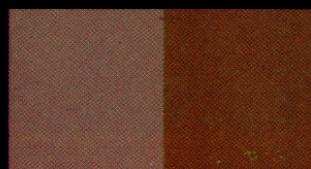
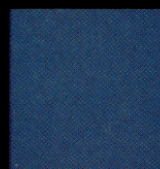
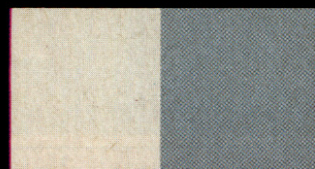
DARK
SANDSTONE
METALLIC

DARK
MAPLE RED
METALLIC

ALL MODELS EXCEPT OMEGA
LIGHT JADESTONE
METALLIC

DARK JADESTONE
METALLIC

MAPLE RED
METALLIC



ALL MODELS
EXCEPT OMEGA
AND TORONADO

PASTEL SAUTERNE

ALL MODELS
EXCEPT
TORONADO

SAUTERNE
GOLD METALLIC

OMEGA MODELS ONLY

DARK
GREEN METALLIC

BRIGHT YELLOW

ORANGE METALLIC

BRIGHT RED

TORONADO ONLY

PASTEL BEIGE

DOESKIN
METALLIC

TORONADO AND NINETY-EIGHT ONLY

DARK JADESTONE
FIREMIST

SILVER FAWN
FIREMIST

SLATE GRAY
FIREMIST

