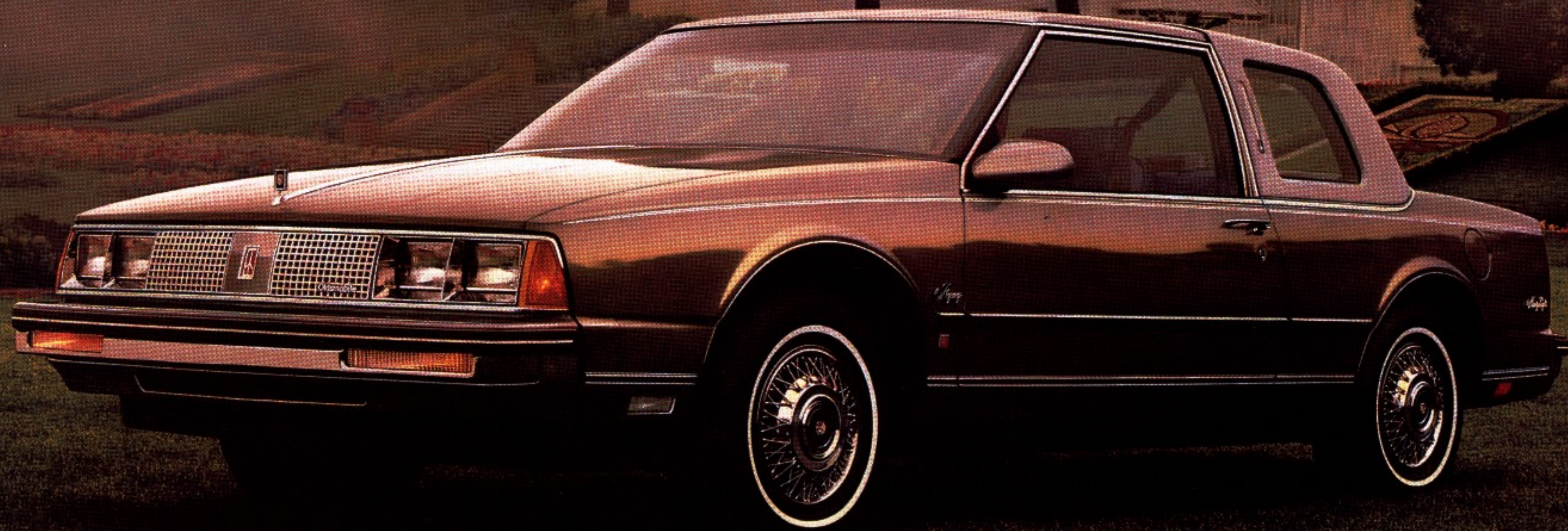


OLDSMOBILE 1986 NINETY-EIGHT

JIM GAUTHIER
CHEVROLET OLDSMOBILE
CADILLAC LTD.
1290 MAIN STREET,
WINNIPEG, MANITOBA,
R2W 3T3



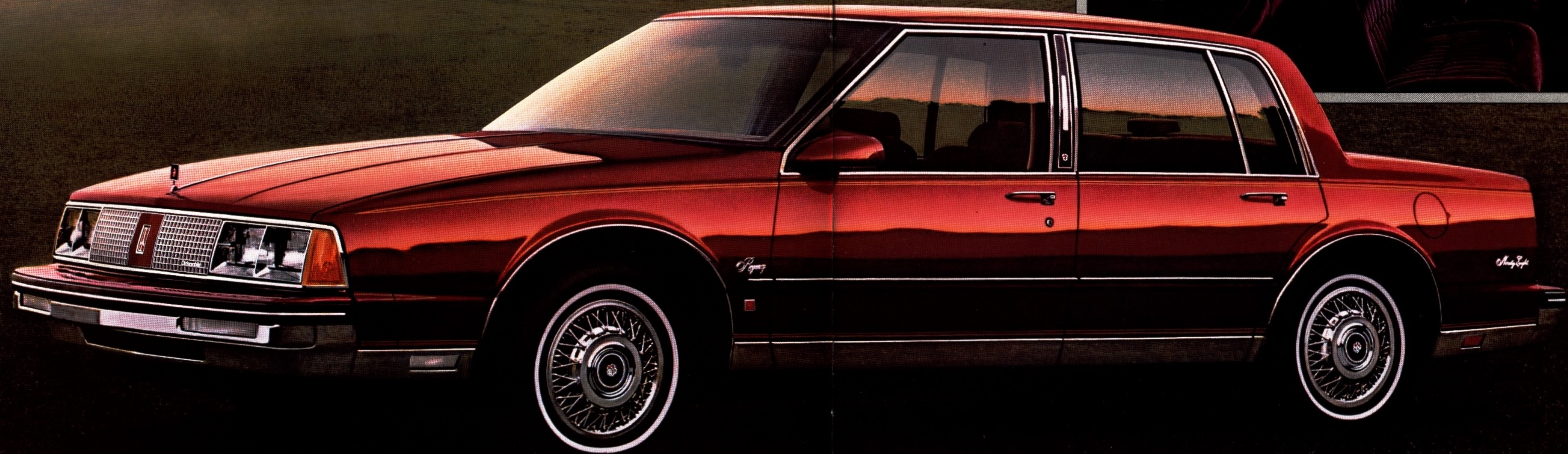
Official Supplier
to The 1986
World Exposition



NINETY-EIGHT REGENCY BROUGHAM SEDAN

The luxury of Ninety-Eight Regency Brougham is obvious at a glance. The stately styling with its gleaming multi-coat/high-gloss enamel finish. The meticulous fit of the body components. The spacious accommodation for six. And underneath, there is luxury of a different sort: the luxury of a choice of three levels of ride control. Standard equipment includes front-wheel drive and rack-and-pinion steering, four-wheel independent suspension, and electronic load leveling.

Ninety-Eight Regency Brougham's divided bench seat comes standard in gracious Elite velour, with a six-way power seat for the driver. Or choose from a selection of fine leather seating, including the stunning new Grande ensemble.



NINETY-EIGHT REGENCY SEDAN
& NINETY-EIGHT REGENCY COUPE

In Ninety-Eight Regency, you'll find a variety of features to make your driving more convenient. Power steering and brakes, power windows, power door locks, and a power six-way driver's seat are all standard. So are Four-Season air conditioning, side window defoggers, and Soft-Ray tinted glass. And Ninety-Eight Regency's extensive array of available equipment allows you to tailor a driving environment to match your own good taste.

A handsome Prima II velour is standard on Ninety-Eight Regency interiors, in a choice of six colours. Genuine leather seating is available in five colours.





Available Brougham Grande leather seating with pigskin inserts. Seats flank leather-topped console (above). The special feel of leather is available in the seating area. Six-way power seat for driver is standard (below).



■ 6-Way Power Seat Adjuster – Passenger Side ■ 6-Way Power Seat Adjuster – Driver Side – with 2-Position Memory feature ■ Reclining Seat Back – Passenger Side Manual, or Power ■ Reclining Seat Back – Driver Side Manual ■ Power Trunk-Lid Lock Release ■ Auxiliary Floor Mats, Front and Rear ■ Luggage Compartment Floor Mat ■ Body-Side Mouldings (Std. on Brougham) ■ Door-Edge Guards ■ Fully Vinyl-Padded Roof Covering (Sedan) ■ Electronic Air Conditioner (Std. on Brougham) ■ Sail Panel Reading Lamps (Std. on Brougham) ■ Automatic Power Door Locks ■ Front Door Locks and Interior Automatic Illumination Package ■ Electrically Operated Outside Rearview Mirrors, Driver and Passenger Side ■ Front Seat Litter Container ■ Illuminated Visor Vanity Mirror, Passenger Side ■ Paint Scheme, Body Side ■ Body-Side Accent Stripes ■ Engine Block Heater ■ Automatic Inside Day-Night Mirror ■ Level III Suspension System ■ Firm Ride and Handling Package ■ Anti-Lock Braking System, Electronically Controlled ■ Fuel Filler Door Lock with Electric Remote Release ■ Voice Information Reminder System (English only) ■ Instrument Panel Cluster Package ■ Auto Calculator with Digital Read-out ■ Electronic Instrument Panel Cluster ■ Deck Lid Luggage Carrier ■ Electronic Cruise Control with Resume and Acceleration Features ■ Tilt-Away Steering Wheel (Std. on Brougham) ■ Tilt-and-Telescope Steering Wheel ■ Simulated Wire Wheel Discs with Locks (Std. on Regency Brougham) ■ Pulse Wiper System (Std. on Brougham) ■ Twilight Sentinel ■ Electric Sliding Tinted Glass Sunroof ■ Puncture-Sealing

Tires ■ Cornering Lamps (Std. on Regency Brougham) ■ Aluminum-Styled 14" Wheels ■ Aluminum-Styled Wheels with Spokes for Level III Suspension ■ Bumper Guards, Rear ■ Exterior Lamp Monitor, Front and Rear ■ Special Glamour Metallic Paints ■ Reminder Package ■ High-Capacity Engine Cooling Systems ■ Custom Leather Trims in Seating Areas ■ Grande Trim Package ■ Trailer Electrical Wiring Harness ■ Radios and Tape Players: Delco/GM Bose Music System; ETR AM/FM Stereo w/Seek and Scan, Auto Reverse Cassette with Search and Repeat, Graphic Equalizer and Digital Display Clock ■ Radio Speakers, Dual Rear with Extended Range ■ Antenna, Power Front Fender ■ Antenna, Tri-Bands Power Front Fender (included with CB Radio).



While there are many service contracts available on the market today, there is only one which gives you an agreement directly with General Motors. It is the one with the GM Protection Plan logo shown above. This logo on all Plan material assures you that the service contract you are buying is the GM Plan, we believe the finest such program available to GM owners.

The GM Protection Plan provides additional protection during and after the new vehicle limited warranties. Ask your General Motors dealer for details and information about the genuine GM Protection Plan.



Available power memory seat.



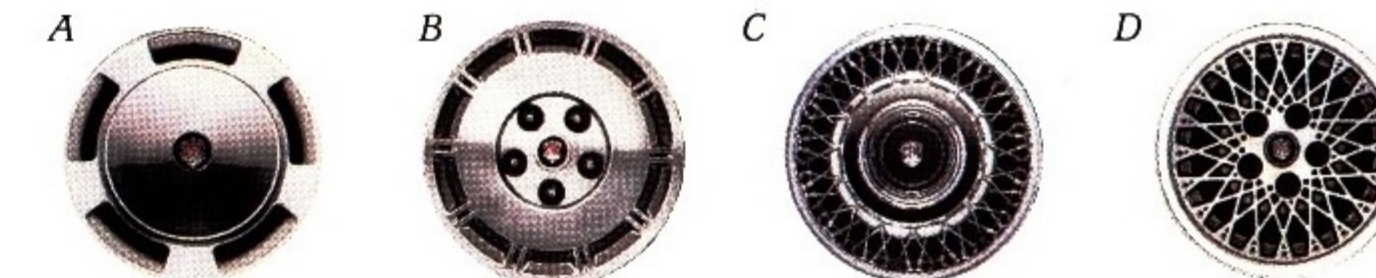
Available electronically controlled anti-skid braking system.



Ninety-Eight Regency instrument panel with available equipment.*



This available electronic instrument panel cluster may be ordered with optional 19-function auto calculator and voice information reminder system.



(A) Deluxe wheel disc. (B) Aluminum-styled wheel. (C) Simulated wire wheel disc. (D) Aluminum-styled wheel with spokes for Level III Suspension.

*Note: Speedometers in Canada have major scale in km/h. Secondary in MPH and odometer in kilometres.

MODEL AVAILABILITY

Ninety-Eight Regency:

2-Door Coupe, 4-Door Sedan

Ninety-Eight Regency Brougham:

2-Door Coupe, 4-Door Sedan

NINETY-EIGHT REGENCY

STANDARD EQUIPMENT

Chassis/Body/Mechanical

■ Transverse-Mounted 3.8 Litre V6 Engine with Sequential-Port Fuel Injection ■ Computer Command Control ■ 4-Speed Automatic Overdrive Transmission with Torque Converter Clutch ■ Unitized Body Construction ■ Front-Wheel Drive ■ Four-Wheel Independent Suspension with MacPherson Front Struts and Rear Coil Springs ■ Automatic Leveling System ■ Extensive Anti-Corrosion Treatment ■ Power Front Low-Drag Disc Brakes ■ Power Rack-and-Pinion Steering ■ High-Energy Ignition System ■ High Capacity Maintenance-Free Battery ■ Delcotron ■ Dual Patch-Style Remote Control Outside Mirrors ■ Compact Spare Tire ■ Lower Body-Side, Wide Belt Reveal, Roof Drip, Rocker Panel and Wheel-Opening Mouldings ■ Headlamps with Tungsten Halogen High Beams ■ Pillar-Mounted Opera Lamps ■ Padded Vinyl Landau Rooftop Covering (Coupe models) ■ Deluxe Wheel Discs ■ Deluxe Trunk Trim with Spare Tire Cover ■ P205/75R-14 Steel-Belted Radial-Ply, White Stripe All-Seasons Tires. Interior

■ Electric Rear Window Defroster ■ Four-Season Air Conditioner ■ Armrests, Front and Rear Seat, Centre ■ Wall-to-Wall, Cut-Pile Carpeting with Carpeted Lower Door Panels ■ Cigar Lighters, Instrument Panel and Rear Seat ■ Convenience Package of Lamps, Visor Vanity Mirror and Chime Tones ■ Power Door Locks ■ Door-Pull Handles ■ Hood Lock Release, Interior Operated ■ Instrument Panel Simulated Regency Walnut Grain Trim ■ Trip Odometer



POWER TEAMS		Engine Availability		Transmission
Engine	Opt. No.	Ninety-Eight Regency	Regency Brougham	Availability Automatic w/Overdrive (MX0)
3.8 Litre SFI* V6 (A)	LG2	STD	STD	STD
STD - Standard *Sequential-Port Fuel Injection (A) Produced by GM - Buick Motor Division, U.S.A.				
See your Oldsmobile salesperson for fuel consumption estimates for Ninety-Eight based on Transport Canada approved test methods.				

A WORD ABOUT ENGINES—Oldsmobiles are equipped with engines produced at facilities operated by GM car groups, subsidiaries or affiliated companies worldwide.

DIMENSIONS: mm (in.)	Coupe	Sedan
Wheelbase	2815 (110.8)	2815 (110.8)
Length (overall)	4988 (196.4)	4988 (196.4)
Width (overall)	1832 (72.1)	1832 (72.1)
Height (loaded)	1399 (51.1)	1399 (51.1)
Head Room - Front	998 (39.3)	998 (39.3)
Head Room - Rear	969 (38.1)	969 (38.1)
Leg Room - Front	1078 (42.4)	1078 (42.4)
Leg Room - Rear	1036 (40.8)	1036 (40.8)
Fuel Tank Capacity: Litres (gals.)	68.2 (15.)	68.2 (15.)
Usable Trunk Capacity: Litres (cu. ft.)	444 (15.7)	444 (15.7)

■ Header Panel Reading Lamp ■ Lamp Switches at all Doors ■ ETR™ AM/FM Stereo Radio with Seek and Scan, Digital Display Clock, Dual Rear Speakers, Fixed mast antenna ■ Full-Foam Seat Construction ■ Divided Front Seat with Dual Controls: Driver Side 6-Way Power, Passenger Side Manual ■ Deluxe Safety Belts, Colour Coordinated to Individual Interiors ■ Power Side Windows ■ Power Side Window Defoggers ■ Deluxe Steering Wheel ■ Soft-Ray Tinted Glass.

NINETY-EIGHT REGENCY BROUGHAM

Additional Standard Equipment

Specific Model Identification ■ Simulated Wire Wheel Discs with Locks ■ Front Fender Cornering Lamps ■ Sail Panel Reading Lamps ■ Body-Side Mouldings ■ Deluxe Steering Wheel with Tilt-Away Feature ■ Pulse Windshield Wiper System ■ Electronic Comfort Control Air Conditioner.

SAFETY FEATURES

Occupant Protection

■ Manual lap/shoulder belts for

driver and right front passenger (driver side includes visual and audible warning system) ■ Manual lap belts at each rear seat position, (and centre front, when applicable) ■ Energy absorbing steering column ■ Energy absorbing instrument panel ■ Energy absorbing front seat, back tops ■ Laminated safety glass windshield and tempered safety side and rear window glass ■ Safety interlocking door latches ■ Passenger-guard inside door lock handles ■ Inertia-locking, folding front seat backs ■ Safety armrests ■ Head restraints, driver and right front passenger (adjustable).

Accident Avoidance

■ Side marker lights and reflectors ■ Parking lamps that illuminate with headlamps ■ Four-way hazard warning flasher ■ Backup lights ■ Centre high-mounted stop lamp ■ Directional signal control and lane change feature ■ Windshield defroster, washer and dual-speed wipers ■ Inside rearview mirror with vinyl-bonded glass ■ Dual outside

rearview mirrors ■ Brake system with dual master cylinder and warning light ■ Starter safety switch ■ Dual action hood latch system ■ Low glare finish on instrument panel top, inside windshield mouldings, wiper arms and blades, and metallic steering wheel surfaces ■ Illuminated heater and defroster controls ■ Illuminated windshield wiper and washer controls ■ Tires with built-in tread-wear indicators.

Theft Deterrence

■ Audible reminder for ignition key removal ■ Theft-deterrent steering column lock ■ Visible vehicle identification number.

FOR YOUR PROTECTION*

1. New Vehicle Limited Warranty - 12 months or 20,000 kilometres, whichever comes first.
2. Major Assembly Coverage (1st Purchaser) - after expiration of basic coverage up to a total of 36 months or 60,000 kilometres whichever comes first on gasoline engine, transaxle, front-wheel drive, engine cooling and fuel, steering, front suspension, brakes, factory-installed air conditioner, electrical, electronic instrument cluster † (\$100 deductible). 2nd Purchaser \$25 transfer fee required for unexpired portion of coverage.
3. Owner Assistance Program.
4. Special Policy Adjustment Program.

*Ask your dealer for details.

†Deductible does not apply.



5-year unlimited kilometres corrosion perforation warranty. On all 1986 GM passenger cars. Ask your dealer for details.

COMMITMENT TO



General Motors recognizes that taking delivery of your new vehicle is a significant event. To ensure that your delivery experience contributes to your overall satisfaction, we have implemented a "Commitment to Excellence" Delivery Procedure.

This procedure includes a thorough new vehicle inspection by both the service technician and salesperson, a full tank of fuel, and a follow-up survey to determine your satisfaction with the delivery experience.

General Motors "Commitment to Excellence" is yet another excellent reason to "Look at GM Today".

A WORD ABOUT THIS CATALOGUE

The vehicles described in this catalogue incorporate components produced by General Motors of Canada Limited and related companies and suppliers. During manufacturing, different components than initially scheduled may be used.

All illustrations and specifications contained in this catalogue are based on the latest product information at time of publication approval. The right is reserved to make changes at any time, without notice, in prices, colours, materials, equipment, specifications and models, and to discontinue models. Some of the equipment shown or described throughout this catalogue is available at extra cost or can only be ordered in conjunction with the other optional equipment. Some options may not be available when your vehicle is built. Check with your dealer for complete information.

There is a special feel in an



General Motors of Canada Limited, Oshawa, Ontario

Printed in Canada

September 1985