

BMW X5

X5 xDrive35i
X5 xDrive35d
X5 xDrive50i



The Ultimate
Driving Experience®



THE BMW X5.

JOY FUSES CULTURES.

BMW EfficientDynamics
Less emissions. More driving pleasure.



Information Provided by
DEALER
e-PROCESS



Joy fuses cultures. The BMW X5 is adept at uniting the seemingly paradoxical. Pioneering technologies, for example, make it possible to generate maximum power from a minimum of fuel. And despite the subtle elegance of the interior, the BMW X5 possesses bold driving dynamism.

**ONE OF THE MOST EFFICIENT
WAYS TO DRIVE LUXURIOUSLY.**



Information Provided by:

DEALER
e-process



The BMW X5

DRIVING PLEASURE
AT ITS BEST.

- 06 **Exterior**
The pioneer for an entire class of vehicle.
- 14 **Design**
The BMW X5 colours and what they mean.
- 16 **Interior**
Everything you need for world-class travel.
- 20 **Quality**
Craftsmanship that sets standards.

Technology

NEW WAYS OF
INCREASING EFFICIENCY.

- 22 **Performance**
The engine concept of the BMW X5.
- 24 **BMW EfficientDynamics**
A technology package for reduced consumption and emissions.
- 26 **Engines**
The latest generation of diesel and gasoline engines.
- 30 **Chassis and safety**
Innovations for added enjoyment.
- 32 **BMW ConnectedDrive**
Intelligent network for better comfort, safety, and convenience.
- 34 **Research and development**
An endurance test at the North Cape.

Equipment

UNIQUE IN EVERY
COMBINATION.

- 36 **Equipment combinations**
- 38 **Exterior colours**
- 39 **Upholstery colours**
- 40 **Interior colours and interior trims**
- 42 **Standard/optional equipment**
- 54 **M Sport Package**
- 56 **BMW Individual**
Exclusivity in all its forms.
- 58 **Original BMW Accessories**
Multi-faceted and individual.

Overviews

BMW X5: VERSATILITY
AT A GLANCE.

- 59 **Equipment tables**
- 66 **Technical data**
- 68 **BMW Service and BMW brand experience**
Exclusive offers for BMW customers.

Editorial

A MODERN
DECATHLETE.

A multi-talented automobile: the BMW X5.

The BMW X5 has always been able to manoeuvre skilfully between worlds. Fast highways and winding mountain passes become just as relaxing as those last few metres before reaching your destination.

Now the many talents of the BMW X5 are even more pronounced. The concentrated front and broad rear emphasize its immense dedication to the road.

But despite its size, the elegance and versatility of the BMW X5 afford it a sense of refinement and restraint. Particularly remarkable is its harmonious triad of power, dynamism, and efficiency, made possible by the latest BMW EfficientDynamics technologies. Behind the wheel, you can sense its readiness to perform and its nonchalant self-confidence. This is driving pleasure that can be enjoyed with a clear conscience: thanks to BMW EfficientDynamics, the BMW X5 models are capable of extraordinarily low fuel consumption, thus reducing both fuel costs and the vehicle's environmental impact. And with the BMW X5 xDrive35d, you'll have even more time on your hands, as you'll be spending less time at the pump. No other automobile unites as many talents with this degree of reassuring efficiency.

Specifications of model shown: X5 xDrive35i

Engine: BMW TwinPower Turbo in-line six-cylinder engine
Output: 300hp
Wheels: Y Spoke alloy wheels – Style 214
Exterior colour: Sparkling Bronze metallic
Upholstery: Oyster Nevada Leather
Interior trim: Dark Bamboo wood trim

BMW EfficientDynamics
Less emissions. More driving pleasure.



Discover the world in an automobile that is the pioneer of a whole class. Take a spin in the BMW X5. Thanks to its unrivalled sense of self-confidence and an entire palette of innovative technologies, it brings The Ultimate Driving Experience to life like no other vehicle. You'll instantly feel the perfect union of extremely precise steering and directional stability, coupled with the exceptionally direct handling afforded by the chassis. The refined power of the economical engine is instantly thrilling. And the host of BMW EfficientDynamics technologies top it all off with an impressive power-to-efficiency ratio.



JOY MAKES OPPOSITES ATTRACT.

**TRUE TO CHARACTER.
BREAKING NEW GROUND.**



Joy awakens curiosity. And the BMW X5 instantly commands the attention befitting its leading role. You won't be able to tear your eyes away. The front bumper is finished almost entirely in body colour. Impressive air intakes and elegant silver matte slats emphasize its broad stance. The distinctive front section lends the vehicle that typical X look. A striking appearance that is further enhanced by the new LED rear lights. Front and rear underide protection in matte aluminum finish completes the sporty and robust exterior design of the BMW X5. Its very appearance radiates innovative power.



Allow your eyes to continue roaming, for upon second glance, there's still much to discover: the long wheelbase and short overhangs at the front and rear define the dynamic proportions of the BMW X5. The muscular hood thrusts forward, while the contoured flanks and new L-shaped rear lights with LED technology create an air of elegant composure. But this journey of the senses is far from over: it's time to climb aboard.



**GENUINE
CHARISMA IS
INSTANTLY
RECOGNIZABLE.**





**CONTROLLED HANDLING FOR
UNBRIDLED DRIVING PLEASURE.**

Choosing a travelling companion is a matter of trust. So it's good to know that despite its massive success, the BMW X5 has its feet firmly on the ground. For example, its double-joint spring-strut front axle delivers unsurpassed agility, along with rock-solid wheel control on any road surface. Stability and optimum traction in all driving situations are supplied by the intelligent xDrive® All-Wheel Drive. For even more dynamic handling and even better directional stability, Active Steering adjusts the steering ratio according to vehicle speed. When you have experienced these levels of performance and poise for yourself, the conclusion is inevitable: with the BMW X5 you'll always arrive in style.

COLOURS WITH DEPTH

Red cars convey a sense of speed, while white cars are thought of as sparkling clean. Which colours best reflect the spirit of the times and the BMW X5? BMW colour designers have all the answers.

The BMW colour team predicted long ago that white would come back into style. White is considered a pure, healing shade in many cultures, and these associations perfectly suit the mood of the moment. BMW colour designers believe the current predilection for white is no flash in the pan. Unlike furniture, fashion, and architecture, trends in the automotive sector tend to be longer-lasting.

The public's growing appreciation of the natural and the sustainable has also influenced BMW designers' colour selections for the BMW X5. They believe the BMW X5 is best complemented by muted, natural colours. The metallic colours Platinum Grey, Sparkling Bronze, and Deep Sea Blue are part of this approach. BMW designers also recommend a strong light-dark contrast between the exterior paint finish and the interior. If you like to stay at the forefront of design trends, for instance, you'll want to opt for a combination of Sparkling Bronze with Oyster Nevada Leather upholstery and Dark Bamboo Wood Trim on the interior.

BROWN IS KEY FOR NEXT SEASON. THE COLOUR RADIATES NATURAL PURITY. COMBINED WITH OYSTER IN THE INTERIOR, THE RESULT IS PURE AVANT-GARDE.

Sparkling Bronze metallic

THE EXTERIOR DESIGN OF THE BMW X5 WITH ITS CONVEX AND CONCAVE CONTOURS APPEARS PARTICULARLY SCULPTURAL IN METALLIC COLOURS.

Platinum Grey metallic

DARK BLUE HAS ALWAYS DENOTED ELEGANCE AND UNDERSTATEMENT. COMBINED WITH A CINNAMON BROWN INTERIOR, THE BMW X5 IS LENT AN EXTRAORDINARILY ATHLETIC ASPECT.

Deep Sea Blue metallic

Colours shown here are not necessarily included as standard equipment.

THE END IS IN SIGHT.
AND THE MEANS
ARE RIGHT AT HAND.



Enjoy every kilometre to the fullest inside the high-calibre cockpit of the BMW X5, where the elevated seating position gives you an optimal view of the road. Sumptuous materials transform the interior into a feast for the eyes – from the upholstery, now available on request in Oyster or Cinnamon Brown Leather shades, to the optional Burl Walnut Wood Trim, with High Gloss finish. Here, elegance in form is matched by elegance in function, as exemplified by the intelligently positioned storage compartments. The instrument panel is ergonomically arranged, and for even more convenience, iDrive® gives you access to a wide range of vehicle functions via one central set of controls. The innovative Head-Up Display projects key information such as vehicle speed and navigation directions directly on the windshield. So you can relax and concentrate on the road while savouring the unique atmosphere of the BMW X5's interior.



Experience intelligent interior design wherever you look. Be inspired by the generous dimensions inside the BMW X5. The optionally available sliding panorama glass roof (standard on the BMW X5 xDrive50i) opens up breathtaking vistas, illuminates the interior, and creates a pleasantly airy sense of space. 4-zone Automatic Air Conditioning is also available upon request. It provides a pleasant climate for the interior and features individually adjustable climate zones for each passenger. On long journeys you'll always be kept entertained; rear passengers can view films in comfort with the rear DVD entertainment system featuring a fold-away 8-inch colour screen. And because a joy shared is a joy doubled, a third row of seating with two individually inclinable seats can also be installed as an option.

**WITH THIS MUCH SPACE,
TAKE YOUR TIME TO EXPLORE.**



FITS LIKE A GLOVE.

Exclusive, sporty, and perfect down to the last detail. The interior of the BMW X5 unites the style of an elegant luxury-class sedan with the dynamism of a Sport Activity Vehicle and offers the highest level of comfort.

Our sense of touch is the most intimate of our five senses. And the most precise. With more than 2,000 sensors per square centimetre, skin can detect superficial irregularities one hundredth of a millimetre wide that are invisible to the naked eye. Touch triggers emotional responses; it can determine the difference between aversion and attraction. Which is why at BMW we have an entire team of experts on hand to ensure that the interior design of every BMW is a sensory delight.

The controls of the BMW X5, made from Pearl gloss chrome, look magnificent and are exquisite to the touch. The high-quality materials used in the interior will caress your tactile sensors with their fine grain and coated surface. And the specially selected, flawless leather is treated with such lavish care that its soft, supple texture is extraordinarily long-lasting. BMW designers take particular care to ensure that seams look even and harmonious. The driver and passengers' other senses will be equally pampered. The front seats can be heated and even ventilated by means of perforations in the leather.

Oyster Nevada Leather, a subtle off-white shade, conveys a generous, open sense of space like a modern lounge suite. This feeling of freedom and space can also be enhanced with the exceptionally large panorama glass roof. In short: the interior of the BMW X5 is a uniquely pleasurable experience for all the senses.



JOY REVEALS NEW POSSIBILITIES.



Increased driving pleasure and reduced fuel consumption and emissions are definitely not mutually exclusive – as the multi-award-winning technologies of BMW EfficientDynamics testify. The BMW X5 is naturally available with a range of innovative engines, making it more efficient right from the start. Plus, these engines take performance to a whole new level. Together with a standard 8-speed automatic transmission with Steptronic®, the BMW X5 xDrive50i boasts impressive fuel efficiency, while continuing to be a technological role model for its vehicle segment.

BMW EFFICIENT DYNAMICS – MAKES MUCH MORE THAN IT TAKES.

BMW was one of the first manufacturers to pursue the goal of efficient driving technologies, as a part of our multiple award-winning sustainability strategy. BMW EfficientDynamics represents the most comprehensive package of innovative technologies for reducing fuel consumption and emissions – while simultaneously increasing driving dynamics – that is currently in standard production. With it, BMW has been able to reduce the CO₂ emissions of its entire fleet by approximately 30% since 1995. Thirty-one models produce less than 140 g of CO₂ per kilometre, and BMW has already rolled out more than two million vehicles equipped with EfficientDynamics. BMW intends to achieve a further 25% reduction by 2020.

Different paths to the same destination: unmistakable BMW driving pleasure.

With EfficientDynamics, BMW is continuously developing innovative systems that will bring us nearer to the goal of emission-free mobility in the long term. Driving pleasure has not been forgotten. It's being pursued in four different ways at once. The optimization of models with conventional diesel and gasoline engines continues. Meanwhile, the BMW Hydrogen 7 has impressively demonstrated just how much potential there is in the combination of a hydrogen drive and combustion engine. In early 2010 BMW launched its first production models with hybrid drive: the BMW ActiveHybrid 7 and the BMW ActiveHybrid X6. Both models offer exemplary efficiency and dynamism to an unequalled degree. Based on the BMW Concept ActiveE, with its innovative 100% electric drive system, a whole new form of dynamism will be introduced – a model that will pave the way for the emission-free mobility of the future. And finally, a completely new vehicle concept targeted at meeting the need for sustainable mobility in fast-growing conurbations could soon become reality in the shape of the Megacity Vehicle (MCV), specially developed as part of project i.



Vision becomes reality: BMW Vision EfficientDynamics. Highlighting BMW's position as the world's leading manufacturer of exceptionally sporty yet incomparably efficient vehicles. The BMW Vision EfficientDynamics test model has a latest-generation fully hybrid system with output of 328hp. A three-cylinder turbo diesel (160hp, 214 lb-ft torque), a hybrid synchronous engine on the front axle (166 lb-ft), and a fully hybrid drive system on the rear axle (155 lb-ft) give the vehicle a range of up to 700 kilometres. This sports car's ratio of dynamism to fuel consumption is quite simply unmatched.

www.bmw.ca/EfficientDynamics

THE BMW EFFICIENT DYNAMICS FEATURES IN THE BMW X5 AT A GLANCE:



High Precision Injection.

This latest-generation gasoline direct injection system features Piezo injectors located right next to the spark plugs. They inject fuel at high pressure with maximum precision, ensuring particularly efficient combustion.

8-speed automatic transmission with Steptronic.¹

The particularly smooth gear shifts of the new 8-speed automatic transmission produce greater engine efficiency at every speed. The result: a reduction in fuel consumption coupled with more comfortable gear changes. (Standard on the BMW X5 xDrive35i and X5 xDrive50i.)

Valvetronic®.

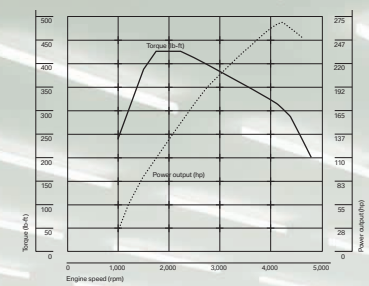
The Valvetronic valve control system improves engine response and refinement and helps to reduce fuel consumption considerably. The system provides fully variable lift adjustment of the inlet valves.

Brake Energy Regeneration.¹

Normally, to supply the battery with electrical energy, the alternator is permanently driven using engine power, which consumes more fuel. Brake Energy Regeneration means that the alternator usually only generates electricity when drivers take their foot off either the accelerator or brake – previously unused kinetic energy is transformed in coasting mode into electrical energy before being fed into the battery. So electricity is generated while coasting, without consuming additional fuel.

¹ Not available on the BMW X5 xDrive35d.

The diesel engine.
The BMW X5 xDrive35d captivates both drivers and onlookers alike with its cultivated power and unparalleled efficiency. The latest Common Rail Technology combines smooth, economical running with spontaneous acceleration and enormously enjoyable torque. This model also features lightweight aluminum construction and is equipped with a zero-maintenance particle filter as standard.



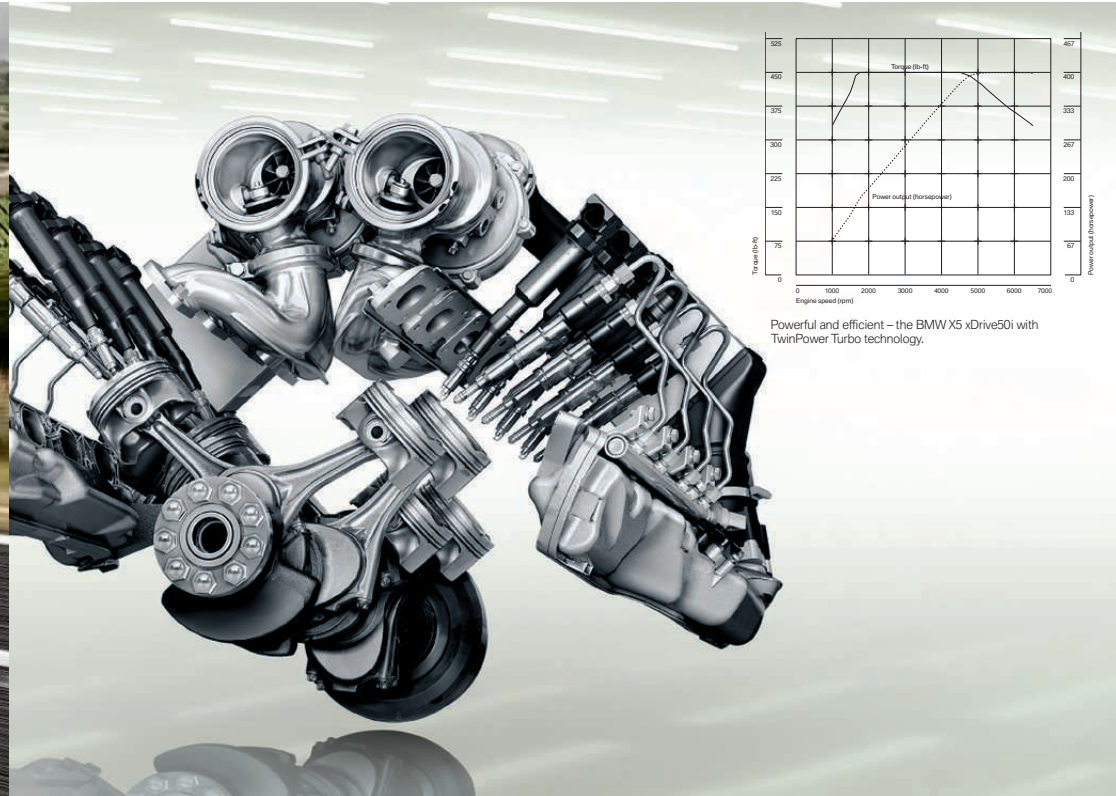
High performance, low emissions – the efficient engine of the BMW xDrive35d.



Featuring BMW's award-winning Advanced Diesel engine with BluePerformance, twice named "International Engine of the Year." This 265hp engine incorporates the same innovations used in a BMW awarded the title "2008 World Green Car." Employing ultra-low-sulphur diesel fuel and BMW's precise fuel injection technology, the BMW X5 xDrive35d's fuel economy is a very efficient 10.9 L/100 km city and 7.6 L/100 km highway. And while many new diesel engines also offer efficiency and low emissions, BMW Advanced Diesel engines set the standard for torque and pulling power. The BMW X5 xDrive35d delivers maximum torque that's worthy of a V8: 425 lb-ft at 1,750 through 2,250 rpm. Its engine is twin-turbocharged, so it's quick off the mark, accelerating from 0 to 100 km/h in just 7.4 seconds.

**MODEST CONSUMPTION.
LAVISH PERFORMANCE.**

IT ALL REVOLVES
AROUND JOY.
SEVERAL THOUSAND
TIMES PER MINUTE.



Gasoline engines. Performance, power delivery, and high revving distinguish each and every BMW engine. And of course, every engine provided for the BMW X5 adheres to the BMW EfficientDynamics philosophy. This comprehensive package of intelligent technologies reduces fuel consumption while increasing efficiency. Regardless of which engine you opt for, you're guaranteed The Ultimate Driving Experience combined with outstanding efficiency.

BMW X5 xDrive50i.

The BMW TwinPower Turbo V8 engine comes in at the top of the range with two parallel-linked turbochargers. Its speed range of 1,750 to 4,500 rpm yields a hefty maximum torque of 450 lb-ft.

Weighing in at 400hp, this engine accelerates from 0 to 100 km/h in just 5.6 seconds. And High Precision Injection (HPI) ensures super-efficient fuel consumption.

BMW X5 xDrive35i.

This BMW TwinPower Turbo in-line six-cylinder engine combines a TwinScroll turbocharger with Valvetronic and High Precision Injection. A package of intelligent innovations that reduces fuel consumption while spectacularly increasing performance: 300hp,

a maximum torque of 300 lb-ft, and powerful acceleration from 0 to 100 km/h in just 6.8 seconds. Thanks to High Precision Injection (HPI), this engine is capable of delivering gratifying performance even during lean combustion.



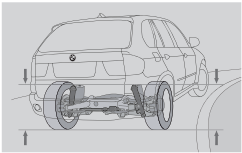
In the BMW X5 you can choose from a host of innovative technologies to make every journey even more enjoyable. Many systems are intelligently interconnected, and their interaction is what gives you maximum safety along with the utmost in driving pleasure.

THE FEELING OF DRIVING THE BMW X5 IS INDESCRIBABLE. BUT WE CAN TELL YOU HOW IT'S PRODUCED.

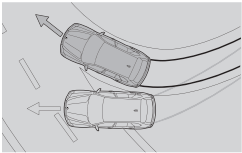
Active Steering (optional).
Reduces or increases the steering angle of the front wheels depending on your current speed and optimizes the forces needed to turn the steering wheel as the situation demands. So parking requires noticeably less effort, and you get more agility and safety at higher speeds. Meaning you stay right on track even when the road ahead is winding.

Double-joint spring-strut front axle.
Reduces to a minimum the disruptions caused by adverse driving conditions. The construction of the double-joint spring-strut reduces damaging longitudinal and lateral forces on the dampers, enabling them to react to uneven road surfaces with even greater precision. Both the front and rear axles are made predominantly from aluminum. This reduces the unsprung weight and increases passenger comfort even further.

xDrive All-Wheel Drive.
This system adapts the ride perfectly to difficult road conditions by always ensuring maximum traction. xDrive All-Wheel Drive and Dynamic Stability Control (DSC) ensure that your BMW X5 always delivers directional stability and outstanding traction. xDrive All-Wheel Drive uses data such as the steering angle or wheel rotation speeds to react immediately upon detecting a tendency to over- or understeer, and employs a controlled coupling to flexibly distribute drive power between the axles of the BMW X5 in only fractions of a second, ensuring optimum road adhesion. xDrive thus combines the benefits of All-Wheel Drive – traction, directional stability, and driving safety – with the characteristic agility of a BMW X5.



Adaptive Drive (optional).
The optional Adaptive Drive package combines both active suspension control systems: Dynamic Drive and Electronic Damper Control. This system includes an individual damper adjustment – Dynamic Drive ensures that active stabilizers on the front and rear axles minimize body roll until it is almost unnoticeable. So passengers will enjoy increased relaxation or the opportunity to get some work done in peace.



Dynamic Stability Control (DSC).
Highly sensitive sensors constantly assess the vehicle's situation in real time and optimize directional stability and traction where necessary by intervening in the engine and brake management. In addition, the BMW X5 features Hill-Start Assistant, which prevents the vehicle rolling downhill for one and a half seconds once the foot brake is released. So the vehicle is easier to control in tricky situations, actively increasing safety as well as driving pleasure.

Dynamic Traction Control (DTC).
This adjunct to Dynamic Stability Control mode has been specially tailored to the BMW X5 and offers unparalleled propulsive power in off-road driving situations. Activated at the push of a button, the traction mode increases tolerance for wheel slip and improves initial acceleration on loose snow or sand, as the wheels spin more lightly. DTC thus delays the intervention of Dynamic Stability Control, even on asphalt, for a more intense driving experience.

Hill Descent Control (HDC).
Hill Descent Control (HDC) enables your BMW to automatically take even the steepest downhill gradients safely and reliably – without the driver having to brake. With Dynamic Cruise Control, vehicle speed can also be controlled via a lever to the side of the steering column.

Body rigidity.
The system of members and node connections in the functionally constructed body structure, as well as a strategic deployment of high-strength materials, delivers maximum passive safety, protecting from a front, side, or rear crash. This rigid body structure is also a crucial factor in the vehicle's noticeably dynamic driving characteristics.

**BMW CONNECTED DRIVE:
DRIVER, VEHICLE, AND OUTSIDE WORLD.
INTELLIGENTLY NETWORKED.**

Our world is becoming more closely connected every day. BMW drivers are used to the fact that their vehicle and their world are connected – that they can request information, communicate via telephone or e-mail, and always be up to date while they're on the go. BMW ConnectedDrive is an umbrella term for all the services

and innovative technologies that network BMW vehicles and their passengers with the world outside and the traffic around. The innovations of the optional BMW ConnectedDrive provide greater comfort, safety, and convenience.



Head-Up Display (optional).
The BMW X5 is optionally available with Head-Up Display, to help you keep your eye on the surrounding traffic. Relevant driving information is projected directly in the driver's field of vision via a multi-coloured TFT display. Head-Up Display provides key driving information such as current speed and navigation instructions.



Park Distance Control with Rear-view Camera and Top View (optional).
Park Distance Control (PDC) uses optical and acoustic signals to facilitate comfortable and safe parking. Top View offers drivers an overview of their surroundings while manoeuvring, via a bird's-eye image of the vehicle on the Control Display. In addition, the Rear-view Camera provides a better view when you're reversing while parking at under 20 km/h.



Integration of mobile devices.
BMW ConnectedDrive allows you to optionally utilize the vehicle's existing operating controls so you can easily and effectively connect mobile devices to your BMW X5 and control them intuitively while staying focused on the road ahead. Your data remains stored on the mobile device while you operate it via the iDrive Controller.



Advanced Automatic Collision Notification.
In the event of an accident, BMW ConnectedDrive and BMW Assist automatically transmit an emergency call with detailed information including the car's location, number of occupied seats, and the potential level of injury caused. This enables rescue services to quickly arrange suitable medical assistance for the people involved.



A TEST DRIVE IN EUROPE'S FROZEN NORTH.

Before each BMW model goes onto the production line it is tested under extreme conditions in Sweden.



The workshops at the BMW Test Centre in Arjeplog employ more than 100 people throughout the winter months.



65 degrees 46 minutes north, 18 degrees 31 minutes east, right up against the edge of the Arctic Circle, where temperatures hover around -30. Only late in the morning does the sun heave into view, and it's not long before it disappears again under the grey horizon. A pretty desolate region. But suddenly the dry powder explodes into the frosty air as a BMW X5 sweeps around the bend. The speed is breathtaking on an icy-smooth surface and a road whose contours can only be guessed at beneath the enveloping white. These are the winter tests in Lapland, in northern Sweden, the frozen extremity of Europe, where each BMW is sent to prove that it can function perfectly even under extreme conditions. You can watch as the cars are put through their paces on the frozen expanses of Lake Hornavan. The BMW X5 hurtles over the mirror-like surface, brakelights glowing, fishtails briefly, and is still. Then it executes a series of circles, slowing gradually to come to a final stop at the further edge of the ice.

For Heinz Krusche, this kind of drama is all in a day's work. An engineer by training, for the last 30 years he has been commuting from the BMW headquarters in Munich, 2,500 miles from the white deserts around Arjeplog, itself a small town of only 3,277 souls. This secluded outpost boasts a modern airfield nearby, where large airliners come and go daily, and where December sees an influx of test drivers from all over the world. Their colleagues, meanwhile, have trekked north in trucks loaded with sophisticated electronic equipment, as the supermarket parking lot gradually fills with a whole car show's worth of high-end vehicles. Models that have not yet made their debut on the market are discreetly veiled in black tape.

As Krusche, the chief tester, observes, "Only places like this give us the scope to try out all possible driving situations under the same climatic conditions." His team's task is to test out and optimize every vehicle feature, from the mechanics of the sliding glass roof and the engine temperature management right down to the tires themselves. Each test vehicle is equipped with the very latest in sensory technology; some indeed are turned into veritable laboratories on wheels. Heinz Krusche and his expert crew are working on an advanced version of the systems that regulate driving dynamics in conjunction with the intelligent BMW xDrive All-Wheel Drive system, focusing particularly on braking, starting up, and acceleration in limit ranges – situations that your average driver may never encounter. The engineers are aiming to find ways to ensure optimum stability and safety.

A HOST OF MANUFACTURERS DO THEIR TESTING IN ARJEPLOG. THE CAR PARK AT THE SUPERMARKET IS OFTEN A SHOWCASE OF INNOVATIONS AND PROTOTYPES.

The crucial factor here is the frictional coefficient, which on ice and snow is so low that tires lose their grip and the car cannot be properly steered or braked.

On a frozen lake the frictional coefficient is practically zero. The All-Wheel Drive and the control systems have to give all they have. And so, seemingly impossibly, the BMW X5 cruises by over the slick and polished surface serenely and under control. In this icy terrain there is plenty of opportunity to put the electronic driver assistance systems to the test. The cars' electronic control centres are hooked up to laptops to download the latest software for the Dynamic Stability Control (DSC), which can stop a skid in its tracks. "We often rack up hundreds of kilometres out here," says Krusche. All this driving, measuring, and analyzing is centred on meeting the needs of the customer. Krusche explains, "The great values we can score on the test runs are important to us, but not that crucial in the end. The main thing is to improve the values in those areas that are going to make a difference to the customer's everyday driving experience." This means that, "We investigate everything, measure everything, and aim to modify a lot that we find. The key objective is to bring out maximum performance while retaining the key characteristics of a BMW."

These long hours behind the wheel are more than just a joyride, however – perilous conditions can and do arise, and more than once Krusche or one of his team have found themselves stuck in a fairly severe blizzard. "That's another situation where you're glad you're in a BMW."



The low frictional coefficients on the frozen lakes are perfect for repeatable test drives out at the limits.

Information Provided by



Modern athleticism.



By carefully selecting your paint finish and interior design you can highlight the athleticism of the BMW X5. An interior in Beige Nevada Leather, with Dark Bamboo Wood Trim interior, for example, is the very essence of modernity.

In terms of exterior colours, the new Deep Sea Blue metallic finish combined with 20" Y Spoke alloy wheels – Style 214 is an excellent complement to the powerful character of the BMW X5.



Harmonious exclusivity.

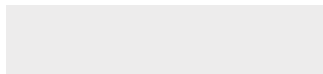


Be inspired by the extraordinary appearance of the BMW X5: new exclusive Cinnamon Brown Nevada Leather harmonizes perfectly with the Burl Walnut

High Gloss interior trim and Black Sapphire metallic exterior colour.



Exterior colours.



■ **Non-metallic** 300 Alpine White



■ **Metallic** 354 Titanium Silver



■ **Metallic** 475 Black Sapphire



■ **Metallic** A76 Deep Sea Blue



■ **Metallic** B06 Sparkling Bronze



■ **Metallic** A68 Platinum Grey



■ **Metallic** A52 Space Grey



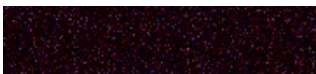
■ **Metallic** A82 Vermilion Red



■ **Metallic** 416 Carbon Black¹



BMW Individual



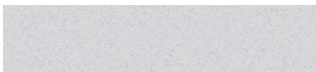
□ **BMW Individual** X03 Ruby Black metallic



□ **BMW Individual** S34 Azurite Black metallic

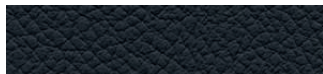


□ **BMW Individual** S58 Aventurine Silver metallic



□ **BMW Individual** X01 Pearl Silver metallic

Upholstery colours.



■ Nevada Leather LUSW Black



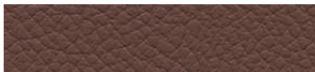
■ Nevada Leather LUB4 Beige



■ Nevada Leather LUCX Oyster



■ Nevada Leather LUF1 Tobacco



■ Nevada Leather LUEZ Cinnamon Brown



□ Nevada Leather, perforated LVB4 Beige²



□ Nevada Leather, perforated LVSW Black²

¹ Only in conjunction with the M Sport Package.

² Available only on the BMW X5 xDrive50i.

The pages in this section of the brochure show available colours and materials for the BMW X5. Use these samples to compare paint, upholstery and trim colours, and combinations. Please note that these samples are representations; they are not exact reproductions. To see actual colours, visit your local BMW Retailer, who will be happy to show you original samples and assist you with special requests.

Interior colours.



Black

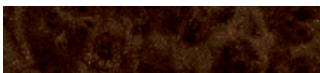


Beige

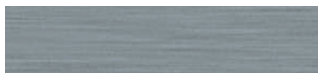


Tobacco

Interior trims.

■ 4AB Burl Walnut High Gloss¹

□ 4AZ Dark Bamboo Wood Trim

□ 4AD Brushed Aluminum²

■ 4CG Satin Silver matte



BMW Individual

□ **BMW Individual Interior Trims XE1**
Walnut Amarone Wood Trim□ **BMW Individual Interior Trims XE3**
Eucalyptus Red Brown Wood Trim□ **BMW Individual Interior Trims XE7**
Piano Finish Black

Combinations.

BMW upholstery colours								
Upholstery material	Nevada Leather					Nevada Leather, perforated		
Standard seats	•	•	•	•	•	–	–	
Comfort Seats	•	•	•	•	•	•	•	
Sport seats	•	•	•	•	•	–	–	
Upholstery colours	Black	Beige	Oyster	Tobacco	Cinnamon Brown	Beige	Black	
Interior colours	Black	Beige	Black	Tobacco	Black	Beige	Black	
BMW exterior colours								
Alpine White non-metallic		•	•	•	•	•	•	•
Titanium Silver metallic		•	•	•	•	•	•	•
Black Sapphire metallic		•	•	•	•	•	•	•
Deep Sea Blue metallic		•	•	•	•	•	•	•
Sparkling Bronze metallic		•	•	•		•	•	•
Platinum Grey metallic		•	•	•	•	•	•	•
Space Grey metallic		•	•	•	•	•	•	•
Vermilion Red metallic		•	•	•		•	•	•
Carbon Black metallic		•	•	•	•			
BMW Individual exterior colours								
Ruby Black metallic		•	•	•	•	•	•	•
Azurite Black metallic		•		•	•	•	•	•
Aventurine Silver metallic		•		•	•			•
Pearl Silver metallic		•		•	•			•
BMW interior trims								
Burl Walnut High Gloss		•	•	•	•	•	•	•
Dark Bamboo Wood Trim		•	•	•	•	•	•	•
Brushed Aluminum		•	•	•	•	•	•	•
Satin Silver matte		•	•		•	•	•	•
BMW Individual interior trims								
Walnut Amarone Wood Trim		•	•	•	•	•	•	•
Eucalyptus Red Brown Wood Trim		•	•	•	•	•	•	•
Piano Finish Black		•	•	•	•	•	•	•
• Recommended colour combination								

¹ Standard on the X5 xDrive50i.

² Only with the M Sport Package.

Standard/optional equipment.



■ **Xenon headlights** for low and high beam. The corona rings also function as daytime driving lights, ensuring not only safety but a striking appearance at any time of day.

■ **Adaptive Headlights**, including cornering lights, illuminate bends by optimal electromechanical adjustment of the swivelling headlights as soon as the driver turns the steering wheel.



■ **Foglights** integrated in the front air dam ensure extra safety in poor visibility. Cornering lights are incorporated into the foglights, providing illumination at an angle of up to 90° to the vehicle when cornering. This allows pedestrians and cyclists to be better seen.



■ **Headlight washers** provide optimal illumination of the road ahead in all weather conditions. Headlights are automatically cleaned in parallel with the windshield when the lights are on.



■ **Lights package** includes rear reading and footwell lights, indirectly lit door pockets, exit lights, and proximity illumination in the outside door handles. This ensures that the area around the door is evenly lit when the door is unlocked.



■ **Adaptive Brakelights** make it easier for drivers following from behind to see how hard you are applying the brakes. If you are applying the brakes in an emergency, the brakelights cover a larger area, allowing following traffic to distinguish between full application of the brakes and just a slight "tap" on the brakes. The result is an even higher standard of driving safety on the road.



■ **Rain sensor including automatic headlight control:** once activated, the rain sensor automatically switches on the windshield wipers and controls wipe frequency, depending on how hard it is raining. This feature includes automatic headlight control, switching on the low-beam headlights automatically, for example, when it gets dark or when entering a tunnel.



■ **Exterior mirrors, electrically adjustable and heated**, finished in body colour, in aspheric design and blue-tinted.

■ **Auto-dimming exterior mirrors**, including fold-in function and automatic parking function.



■ **Front ornamental grille** with kidney grille slats in Titanium and chrome surround (standard on the BMW X5 xDrive35d and xDrive50i).



■ **Front ornamental grille** with kidney grille slats painted black and chrome surround (standard on the BMW X5 xDrive35i).



■ **Roof rails, matte black:** matched harmoniously to the vehicle's design, they provide the foundation for BMW's multi-functional roof support for effortless and safe transportation of luggage, bicycles, ski racks, etc.



□ **Roof rails, aluminum,** are also available to add an individual touch to your BMW X5 (only available on the M Sport Package).



□ **Aluminum running boards** with rubber inserts give the BMW X5 a particularly sporty appearance.
□ **Soft Close function** gently closes the four doors.



□ **High-gloss Shadow Line** has the following features in high-gloss Black: window frames, mirror base, and mirror frame.



■ **Privacy Glass** for the rear side windows (behind the B-pillar) and rear window. These tinted windows reduce sun glare and ensure a pleasant temperature inside the car, even in hot weather.



■ **Tailgate:** splits horizontally in two; when open, the lower section forms a platform taking loads up to 250 kg (e.g., for setting down heavy objects). The upper section can be opened separately (e.g., for quickly removing small items of luggage) and can be closed comfortably with Soft Close.
□ **Automatic tailgate operation,** electric.



■ **Roof spoiler** finished in body colour gives the vehicle a particularly muscular look.



■ **Oval tailpipes:** the exhaust system on the BMW X5 xDrive50i features two oval tailpipes made of high-quality stainless steel. The exhaust tips are bordered with an attractive chrome surround.



■ **Circular tailpipes:** the BMW X5 xDrive35i and X5 xDrive35d each come with two single circular tailpipes. The exhaust system is made of high-quality stainless steel and the visible tailpipes are 70 mm in diameter and are trimmed with a chrome surround.



Standard/optional equipment.



☐ **BMW M Double Spoke alloy wheels – Style 333M**, 20 x 10.0 front, 275/40R-20, 20 x 11.0 rear, 315/35R-20 (available only with the M Sport Package).



☒ **BMW Star Spoke alloy wheels – Style 210**, 18 x 8.5, 255/55R-18 (available on the BMW X5 xDrive35i and X5 xDrive35d).



☒ **BMW Y Spoke alloy wheels – Style 335**, 19 x 9.0, 255/50R-19, (standard on the X5 xDrive50i).



☐ **BMW Y Spoke alloy wheels – Style 214**, 20 x 10.0, 275/40R-20, 20 x 11.0 rear, 315/35R-20 (available only on the BMW X5 xDrive35d with Sport Package).



☐ **BMW M V Spoke alloy wheels – Style 223M**, 19 x 9.0 front, 255/50R-19, 19 x 10.0 rear, 285/45R-19 (available only on the BMW X5 xDrive35i with M Sport Package).



❑ **Multi-function leather sport steering wheel**, three-spoke. The buttons on the steering wheel allow for easy operation of audio, telephone, and steering wheel heating functions while keeping your eyes on the road. (Standard on the X5 xDrive50i.)



■ **Start/Stop button** for starting the engine. After inserting the ignition key, you start or stop the engine by simply pressing the button.



❑ **M Leather steering wheel** provides excellent grip thanks to its thicker rim. The integrated multi-function buttons can be used to operate the radio, CD player, and telephone while driving (available with the M Sport Package).

❑ **Active Steering** adapts the steering ratio and steering force to the current speed of the vehicle, thus ensuring optimum steering precision, agility, and comfort (available with the Dynamic Handling package).



❑ **Voice recognition system**, for adjusting, e.g., navigation routes while driving. Functions are shown on the Control Display at the same time. (This feature is included with the optional BMW Navigation System Professional.)



■ **Steering wheel heating**: just press a button to quickly warm up the steering wheel rim – a particularly pleasant amenity in winter.



❑ **Active Cruise Control with Stop & Go function** actively maintains a pre-selected speed and following distance to the vehicle in front – with automatic restart for driving in typical stop-and-go situations such as slow-moving traffic.

■ **Dynamic Cruise Control** facilitates comfortable driving at a pre-selected speed (over 30 km/h).



■ **8-speed automatic transmission with Steptronic**, with electronic gear selection and Adaptive Transmission Management, enables fast, comfortable gear shifting – for maximum driving dynamics and efficiency (available on the BMW X5 xDrive35i and X5 xDrive50i).

■ **6-speed automatic transmission with Steptronic** (available on the BMW X5 xDrive35d).

Standard/optional equipment.



□ **Head-Up Display** projects important travel data, such as current speed, Navigation System directions, and Cruise Control on the windshield, directly in the driver's field of vision. The height and brightness of the display can be adjusted, so that the driver can fully concentrate on the traffic at all times.



■ **Bluetooth wireless technology** enables hands-free operation of approved Bluetooth-enabled mobile phones, which can be operated by voice control or by using the multi-function buttons on the steering wheel.



■ **Electromechanical parking brake** can be activated by pulling the switch marked "P" in the centre console, and deactivated by pressing it once while stepping on the brake pedal.



■ **Cupholders** (two) in the centre console at the front.



■ **Storage options** for a wide range of items are available in the centre console, in the front and rear doors, and in the glovebox. The large centre console storage compartment also houses the AUX/iN connection for external audio sources, such as MP3 players.





□ **Navigation System** with high-resolution 8.8-inch colour display, including DVD drive, 12 GB hard disk for storing data (such as music files), which can be transferred from CDs, MP3 players, or USB sticks.



■ **Control Display** with TFT screen (6.5-inch, colour) shows the functions activated by the iDrive Controller (e.g., on-board computer or radio). An 8.8-inch screen is available with the optional Navigation System Professional.



■ **Programmable memory keys:** with these buttons, the driver and passenger can save their frequently used navigation, audio (e.g. certain radio stations or CD tracks), and telephone functions on six separate buttons for rapid access.



□ **Rear-view Camera with Top View** clearly shows the area behind and to the sides of the vehicle on the Control Display. The Rear-view Camera is activated automatically when the reverse gear is selected, and can also be turned on manually by pressing the park assist button. Trajectory lines can indicate whether or not a parking space is big enough for the BMW X5.



■ **iDrive Controller**, along with special programmable memory keys, follows the same methods used for working with computers. The direct access buttons can directly access the four most frequently used main menu items – CD, radio, telephone, and navigation.



□ **Lane Departure Warning** uses a camera to identify when the car is getting close to a road marking and warns the driver immediately by sending a mild vibration through the steering wheel. The system is designed to work particularly well on highways and is switched on and off using a button to the left of the steering wheel.



□ **Park Distance Control (PDC)**, front and rear, makes parking easier in the narrowest spaces. The distance between the vehicle and the nearest obstacle is signalled acoustically as well as visually in the Control Display (standard on the BMW X5 xDrive50i).



□ **Side View** is a camera-based system offering the driver visual assistance when pulling out with restricted visibility.



Standard/optional equipment.



■ **Automatic Climate Control, 2-zone**, including Automatic Air Recirculation (AAR) with circulation filter, sun and condensation filters, and automatic temperature control (separate for driver and passenger), as well as air volume control. **Including residual heat utilization:** on one-touch activation, heat stored in the engine is used to warm up the interior. So the inside of the vehicle stays pleasantly warm even during brief stops, defying frosty temperatures outside.



□ **4-zone Automatic Air Conditioning.** Same features as 2-zone air conditioning, plus the climate in the rear can be separately controlled with two dials and a display. This version also includes rear blowers, footwell heaters, and outlets in the B-pillars.



■ **Seat heating** for driver and front passenger: seat surfaces and backrests with heating in three stages for pleasant temperatures shortly after setting off.



□ **Ventilated seats** boost your comfort in summer by keeping the seats at a cool, comfortable temperature. Fans in the seat base and backrest blow air through the perforated seat covers (available for the driver and front passenger on the BMW X5 xDrive50i).

□ **Active seat for driver** provides a relaxing seating and driving position. The seat moves up and down on either side, cyclically mobilizing the pelvis and lumbar spine (available on the BMW X5 xDrive50i).





■ **Radio BMW Professional** with 4-channel amplifier, 2-tuner reception, antenna diversity, scan function, CD drive, MP3 decoder, and six loudspeakers.

■ **USB Audio Integration** in the storage compartment under the front armrest for connecting a USB stick or external audio source such as an iPod.



□ **BMW Individual Audio System** with Dirac Live™, a 9-channel digital amplifier (825-watt), and 16 high-performance loudspeakers, including exclusive neodymium magnetic actuators, produces an auditory experience comparable to a live concert. Volume and equalizing levels are automatically adjusted according to vehicle speed (available only on the BMW X5 xDrive50i).

□ **HiFi Sound System Professional** provides outstanding sound through powerful amplifier output, and 10 loudspeakers, including 2 subwoofers (available only on the BMW X5 xDrive35i and X5 xDrive35d).



■ **HiFi 10-speaker sound system.**



Standard/optional equipment.



☒ **Comfort Seats** for driver and front passenger, with electrical seat adjustment for all seat levels. In addition to the standard electric seat functions, Comfort Seats also provide electrically adjustable shoulder and thigh supports, backrest with lumbar support, plus two-way manual lateral adjustment for the front headrests, and passenger-side memory settings.



☐ **Sport seats** for driver and front passenger, including highly contoured seat sides for optimal lateral support at all times.



☒ **Seat adjustment, electric**, for driver and front passenger, with memory function for driver's seat, steering column, and exterior mirrors.

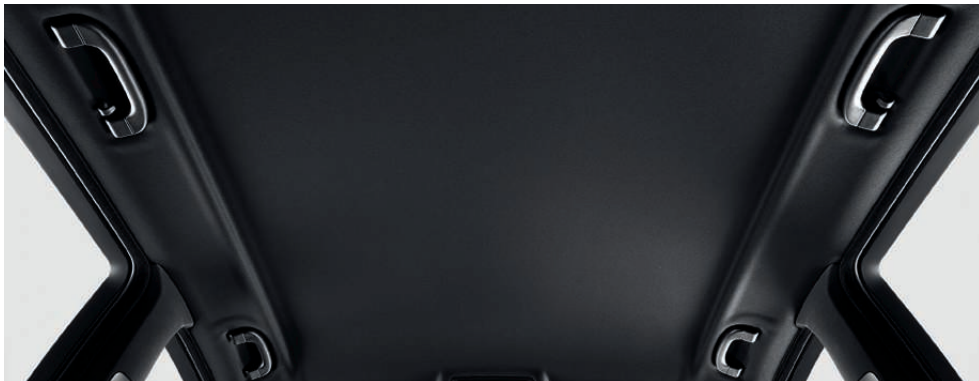


☐ **Interior and exterior mirrors**, with auto-dimming function, activate once a certain light intensity from following vehicles is reached. With fold-in function for exterior mirrors (standard on the BMW X5 xDrive50i).

☒ **Alarm system with remote control**: in any attempt to break into and manipulate your car, the alarm system sets off a loud signal and immediately switches on the hazard warning flashers.



□ **Panorama Sunroof** with an extra-large opening and transparent viewing area, plus wind deflector. Both glass panels tilt up electrically at the touch of a button, and the front panel comes additionally with a sliding function, and an electrically operated roofliner (protecting you and your passengers from glare), as well as comfort opening/closing complete with trap release (standard on the BMW X5 xDrive50i).



□ **Anthracite roofliner:** the A, B, C, and D-pillar trim, as well as the sun visors and roof grab handles, are finished in refined black.



Standard/optional equipment.



■ **Split-folding rear seats** can be asymmetrically split 60:40 and individually folded down.



□ **3rd Row Seats** increase the flexibility of the available space. The two additional seats face forward and can be separately folded down flat into the floor of the luggage compartment. This option also includes 3-point seatbelts, adjustable headrests, armrests, and cupholders. When the 3rd Row Seats are ordered, the second-row seats can be moved horizontally by 8 cm, and feature a tilt-forward function to ease entry to and exit from the 3rd Row Seats.



■ **Sockets** (12 V), located in the front storage bin, centre console storage compartment, rear of the centre console, and luggage compartment. (Four total.)



■ **Cupholders** integrated in the rear centre console, removable, with an additional storage box underneath.



□ **Seat heating at the rear** with two stages.



□ **Ski Bag** for clean and safe transport of up to four pairs of skis with up to four occupants in the vehicle. Whenever the Ski Bag is not required, it can be stored conveniently and out of sight behind the centre armrest.



□ **Rear DVD Entertainment System** offers an independently controllable DVD player with a fold-down 8-inch screen. The system can be operated by wireless remote control, and features sockets for two headphones, an interface for an infrared headset, and an additional AUX/IN connection for external video sources (e.g., video camera).



□ **Sunblinds:** manual sunblinds on each rear side window for reliable protection from intense sun-glare.



□ **Comfort Access:** you can lock and unlock your vehicle without having to operate the remote control. You can even start the engine by using the Start/Stop button, leaving the ignition key stowed in your briefcase or handbag.

■ **Central locking** for the doors and fuel cap, including electrical immobilizer, with automatically recharging key battery.



WHERE ATHLETICISM MEETS AESTHETICS:

THE M SPORT PACKAGE.



M Leather steering wheel in exclusive Nevada Leather, sport seats, 19" M Double Spoke alloy wheels – Style 223M, M Door sills.

Exclusive and stylish – yet breathtakingly powerful: with the M Sport Package you'll enjoy a particularly impressive appearance. The broad wheel arches and Alpine White exterior colour shown here afford the BMW X5 an even more dynamic feel. Bumpers, sills, and door moulding in body colour highlight its powerful potential. Apart from Alpine White, there are five other paint finishes to choose from. The 20" M Double Spoke alloy wheels – Style 333M (shown here) further accentuate the vehicle's athletic nature, which is immediately noticeable thanks to the dynamic suspension settings.

The sport seats offer optimal support in every bend. They're optionally available in Black Nevada Leather, as shown here. The driver and front passenger seats feature electrical seat adjustment; the driver seat also comes with a memory function. And you'll be greeted by attractive door sills with M Lettering every time you climb aboard. Other equipment features in the M Sport Package include Satin Aluminum roof rails, Satin Aluminum Shadowline (not shown here), Anthracite roofliner, and Brushed Aluminum interior trim.

BMW Individual.

VERSATILITY HAS NEVER BEEN SO UNIQUE.

BMW Individual offers exclusive equipment to take driving enjoyment to a new level. This includes unique colours and materials that are perfectly tailored to the driver's wishes. The exterior paint colours feature an intriguing iridescent effect. In the interior, top-quality leather and exclusive wood grains create an unmistakable ambience. Innovative technologies ensure optimum comfort. The end result is a truly unique automobile.

BMW Individual exterior colours: a shade more brilliant. Several thousand shades, in fact.

BMW Individual paint finishes are unique. What sets them apart from standard exterior colours is their intriguing iridescence, creating a fascinating interplay of colours below the paint surface. Many of the special pigments that create these effects have been innovations pioneered by BMW Individual, lending the paint finish an extraordinary intensity.

BMW Individual interior trims: top-class craftsmanship for the finishing touch in the cabin.

BMW Individual wood trims have a magic all their own. They make the cars' interiors very special indeed, with exclusive grain characteristics and colours that are second to none. A strict selection process and perfect finishing ensure excellent quality. Superior craftsmanship is also an essential factor in creating the Piano Finish Black interior trim. Its brilliant, high-gloss surface is the result of a special process usually only applied by the world's leading piano makers.

BMW Individual Audio System. For perfect listening enjoyment.

The BMW Individual Audio System with Dirac Live™ creates a listening experience on a par with a concert hall, using exceptionally powerful speakers with extremely stiff hexacone membranes. Optimum positioning of the 16 high-end speakers in the vehicle and unique signal processing thanks to the 9-channel amplifier with DIRAC Live™ technology further enhance sound quality, eliminating sound impurities and minimizing sound reflections. Interior-specific equalizing and speed-dependent volume control ensure supreme hi-fi enjoyment.

Champagne Merino Leather with Eucalyptus Red Brown interior trim and leather-covered instrument panel.¹



BMW Individual.



THE MOST EXCLUSIVE WAY TO DRIVE A BMW.

True exclusiveness follows the highest of aspirations: those that you set yourself. BMW Individual enables you to achieve these aspirations. With the BMW Individual X5 all individual details are perfectly combined. The BMW Individual finish Ruby Black metallic, shown here, takes on a dark red glow when bathed in light, shimmering as if born of a myriad of tiny crystals.

BMW Individual 19" V Spoke alloy wheels – Style 265 underline the dynamic appearance of the BMW X5. An overview of all BMW Individual colours and materials can be found on pages 38–41.

BMW Individual Ruby Black metallic finish.



Original BMW Accessories.



Surfboard carrier, 21" M Double Spoke alloy wheels – Style 215M.



Infrared stereo headphones, specially attuned to the BMW DVD system.



Burl Walnut decorative trim on the gear lever knob.



Snap-in adapter with USB interface for making calls and listening to music.



Luggage compartment reversible mat can be used either way up, and is non-slip.

A BMW always delivers a special drive. And original BMW Accessories make the experience better still. Combining extraordinary ideas with sheer practicality and immaculate design. Discover the all-around innovative solutions on offer in many categories: exterior, interior, communication and information, and transport and luggage compartments. Your local BMW Retailer will be happy to advise you and provide you with a comprehensive brochure detailing the entire range of Original BMW Accessories.



Rear carrier, lockable, for transporting up to two bicycles.



Safety	xDrive35i	xDrive35d	xDrive50i
Active Headrests in the front	■	■	■
Airbags:			
– Driver and front passenger airbags (with seat occupancy detector)	■	■	■
– Head airbags (for front and 2nd row passengers)	■	■	■
– Side airbags for driver and front passenger, integrated into seat	■	■	■
Alarm system	■	■	■
Brakes:			
– Disc brakes at the front, inner-vented	■	■	■
– Disc brakes at the rear, inner-vented	■	■	■
Central locking with electronic immobilizer , crash sensor	■	■	■
Child seat fastening LATCH in the rear	■	■	■
Dynamic Braking Lights with flashing function	■	■	■
Dynamic Stability Control (DSC) including Anti-lock Braking System (ABS), Brake Assistant, Corner Braking Control (CBC), and Dynamic Traction Control (DTC) with additional functions	■	■	■
Hill Descent Control (HDC)	■	■	■
Parking brake , electromechanical, with auto-hold function	■	■	■
Rollover sensor	■	■	■
Seatbelts:			
– Ergonomic belt system at the rear with 3-point seatbelts for all seats	■	■	■
– Inertia-reel seatbelts with pyrotechnical belt tensioner and belt force governor	■	■	■
Safety body shell:			
– Bumper system with impact cushions in aluminum at the front and steel at the rear; bumpers regenerate to their original shape in collisions at up to 4 km/h, deformation elements front and rear at up to 15 km/h	■	■	■
– Side impact protection integrated into the doors	■	■	■

Exterior design	xDrive35i	xDrive35d	xDrive50i
Aluminum running boards	□	□	□
Chrome Line Exterior	—	—	■
Double kidney with kidney grille slats in black (Titanium coloured on BMW X5 xDrive35d and X5 xDrive50i) and chrome surround	■	■	■
Exterior mirrors in body colour, tinted, electrically adjustable, aspherical, and heated	■	■	■
Metallic paintwork	◆	◆	◆
Roof railing, Satin Aluminum	○	—	○
Roof railing, matte black	■	■	■

Wheels	xDrive35i	xDrive35d	xDrive50i
Wheels:			
– M Double Spoke alloy wheels – Style 333M, 20 x 10.0 front, 275/40R-20, 20 x 11.0 rear, 315/35R-20	—	—	○
– M V Spoke alloy wheels – Style 223M, 19 x 9.0 front, 255/50R-19, 19 x 10.0 rear, 285/45R-19	○	—	—
– Star Spoke alloy wheels – Style 210, 18 x 8.5, 255/55R-18	■	■	—
– Y Spoke alloy wheels – Style 214, 20 x 10.0 front, 275/40R-20, 20 x 11.0 rear, 315/35R-20	—	○	—
– Y Spoke alloy wheels – Style 335, 19 x 9.0 front, 255/50R-19, 19 x 10.0 rear, 285/45R-19	—	○	■
Run-flat tires , including run-flat indicator	■	■	■

Interior design	xDrive35i	xDrive35d	xDrive50i
Anthracite roofliner	○	○	○
Instrument panel with circular speedometer and rev counter, plus tank level and fuel consumption gauges	■	■	■
Interior trims:			
– Brushed Aluminum	○	–	○
– Burl Walnut High Gloss	○	○	■
– Dark Bamboo Wood Trim	○	○	◆
– Satin Silver matte	■	■	–
Upholstery:			
– Leatherette	■	■	–
– Nevada Leather	□	□	■
– Nevada Leather, perforated (only in combination with ventilated seats)	–	–	□

Transmission and technology	xDrive35i	xDrive35d	xDrive50i
6-speed automatic transmission with Steptronic	–	■	–
8-speed automatic transmission with Steptronic , electric gear selector switch, Adaptive Transmission Management	■	–	■
Active Steering , including Servotronic	–	–	○
Adaptive Drive (Dynamic Drive, Dynamic Damper Control, and Electronic Dampener Control (EDC))	–	–	○
BMW TwinPower Turbo in-line six-cylinder gasoline engine	■	–	–
BMW TwinPower Turbo V8 gasoline engine	–	–	■
BMW variable Twin Turbo in-line six-cylinder diesel engine	–	■	–
Brake Energy Regeneration	■	–	■
Common Rail Technology	–	■	–
Diesel particle filter	–	■	–
Double-joint spring-strut front axle	■	■	■
Double-VANOS , double variable camshaft control	■	–	■
Multi-link rear axle	■	■	■
Self-levelling with pneumatic rear suspension	□	□	□
Servotronic	–	–	○
Turbocharger with variable turbine geometry	–	■	–
Valvetronic , fully variable valve control	■	–	–
xDrive All-Wheel Drive	■	■	■

BMW ConnectedDrive – Driver assistance systems	xDrive35i	xDrive35d	xDrive50i
Active Cruise Control with Stop & Go function	—	—	○
Cruise Control with braking function	■	■	■
Head-Up Display	□	□	□
Lane Departure Warning system	○	○	○
Park Distance Control (PDC) front and rear	○	○	■
Rear-view Camera with Top View (only in conjunction with interior/ exterior mirrors with automatic anti-glare function and Park Distance Control (PDC))	○	○	○
Side View	○	○	○

Light and sight	xDrive35i	xDrive35d	xDrive50i
Adaptive Headlights with variable light distribution and vertical adjustment, including turning lights	■	■	■
Exterior mirrors , with automatic anti-glare function, including fold-in function and automatic parking function	○	○	■
Foglights	■	■	■
Interior mirror , with automatic anti-glare function	○	○	■
Lights package (including vicinity lights integrated in exterior door handles, door compartment lights, rear reading lights, and rear footwell illumination)	○	○	■
Rain sensor , including automatic headlight activation	■	■	■
Xenon headlights with LED corona rings for high and low beam , including automatic headlight range control, and four light rings (daytime driving and parking lights), and headlight washing system	■	■	■

Interior	xDrive35i	xDrive35d	xDrive50i
Automatic Air Conditioning, 2-zone (including Automatic Air Recirculation (AAR), condensation and solar sensors, and residual heat button) with air outlets in the rear	■	■	■
Automatic Air Conditioning, 4-zone (with separate temperature control in the rear)	○	○	○
Heated steering wheel	■	■	■
Seats/seat comfort:			
– 3rd Row Seats (two separate folding seats, with additional heating available in conjunction with leather upholstery)	□	□	□
– Active seat for driver (only in conjunction with comfort seat and seat ventilation)	–	–	○
– Comfort Seats for driver and front passenger; electric seat adjustment with additional functions, including lumbar support	○	○	○
– Heated front seats for driver and passenger	■	■	■
– Heated rear seats	○	○	○
– Rear seats, asymmetrically foldable (60:40)	■	■	■
– Seat adjustment, electric (with memory function for driver's seat and exterior mirrors)	■	■	■
– Sport seats for driver and front passenger (including electric seat adjustment)	○	○	○
Steering wheels:			
– Leather steering wheel, three-spoke, with multi-function buttons	■	■	–
– Sport leather steering wheel, three-spoke, with multi-function buttons	○	○	■
Sunblinds for rear side windows, manual	○	○	○

Comfort and interior equipment	xDrive35i	xDrive35d	xDrive50i
Automatic tailgate	○	○	○
Comfort Access system (for keyless entry and engine start)	○	○	○
Cupholders front and rear	■	■	■
Panorama glass roof , electric, tilt/slide functions, convenient operation via vehicle key	○	○	■
Soft Close function for doors	—	—	○
Start/Stop button	■	■	■
Storage facilities with anti-slip lining in the doors , in the centre console, storage box in luggage compartment (lockable)	■	■	■
Tailgate , split	■	■	■
Window lifts , electrical, with one-touch control, comfort switch and trap release	■	■	■

Entertainment, communication, and information	xDrive35i	xDrive35d	xDrive50i
Bluetooth wireless technology	■	■	■
BMW ConnectedDrive – Telematics Services:			
– BMW Assist	■	■	■
Control Display	■	■	■
Functional bookmarks	■	■	■
iDrive Controller with direct menu control buttons	■	■	■
Navigation System with high-resolution 8.8-inch colour display, hard disk for storing navigation data and music files (80 GB), DVD drive, split-screen function	○	○	○
Radio/audio:			
– AUX-IN connection in centre console	■	■	■
– BMW Individual Audio System with DIRAC Live™	—	—	○
– HiFi 10-speaker sound system	■	■	■
– HiFi System Professional	○	○	—
– Radio BMW Professional, including MP3-compatible CD drive	■	■	■
– Rear DVD Entertainment System	□	□	□
– USB/Audio Integration	■	■	■

Audiophile Sound Package	xDrive35i	xDrive35d	xDrive50i
BMW Individual Sound System, SIRIUS satellite radio tuner	—	—	□
BMW Apps Package*	xDrive35i	xDrive35d	xDrive50i
BMW Apps Package with Smartphone Integration and BMW Apps	□	□	□
Comfort Seating Package	xDrive35i	xDrive35d	xDrive50i
Active seat for driver, Ventilated seats in front	—	—	□
Dynamic Handling Package	xDrive35i	xDrive35d	xDrive50i
Adaptive Drive, Active Steering	—	—	□
Executive Package	xDrive35i	xDrive35d	xDrive50i
Automatic 4-Zone Climate Control, Comfort Access, Comfort Seats, Heated rear seats, Lumbar support, Manual side sunshades, Ski Bag	□	□	—
Automatic 4-Zone Climate Control, Automatic trunk, BMW On-board Navigation, BMW TeleServices, Comfort Access, Comfort Seats, Control BMW TeleServices, Heated rear seats, Lumbar support, Manual side sunshades, Rear-view Camera with Top View, Soft Close doors, Ski Bag, Voice control	—	—	□
M Sport Package	xDrive35i	xDrive35d	xDrive50i
19" V Spoke M Alloy wheels – Style 223M, BMW Individual Aluminum Satin Shadowline, BMW Individual roof rails (aluminum satinized), BMW Individual Anthracite roofliner, Brushed Aluminum trim, High-speed tuning, M Aerodynamic kit, M Door sills, M Driver's footrest, M Leather steering wheel, Sport seats, Sport suspension	□	—	—
20" Double Spoke M Alloy wheels – Style 333M, BMW Individual Aluminum Satin Shadowline, BMW Individual Anthracite roofliner, BMW Individual roof rails (aluminum satinized), Brushed Aluminum trim, High-speed tuning, M Aerodynamic kit, M Door sills, M Driver's footrest, M Leather steering wheel, Self-levelling suspension, Sport seats	—	—	□
Premium Package	xDrive35i	xDrive35d	xDrive50i
Automatic tailgate, Burl Walnut Wood Trim, Compass mirror, Electric tilt/telescoping steering column, Exterior auto-dimming mirror, Interior auto-dimming mirror, Lights package, Nevada Leather, Panorama Sunroof, Park Distance Control, Universal garage door opener	□	□	—
Premium Sound Package	xDrive35i	xDrive35d	xDrive50i
HiFi Sound System Professional, SIRIUS satellite radio tuner	□	□	—
Sport Package	xDrive35i	xDrive35d	xDrive50i
19" V Spoke alloy wheels – Style 335, Anthracite roofliner, High-gloss Shadow Line, Sport leather steering wheel, Sport seats, Standard running gear	—	□	—
Technology Package	xDrive35i	xDrive35d	xDrive50i
BMW On-board Navigation System, BMW TeleServices, Rear-view Camera with Top View, Voice control, Side View, and High Beam Assistant	□	□	—
Active Cruise Control with Stop & Go, Lane Departure Warning, Side View, and High Beam Assistant	—	—	□
* Only available in combination with the Technology package.			

Weight		xDrive35i	xDrive35d	xDrive50i
Curb weight	kg	2250	2355	2440
Maximum permissible	kg	2890	2985	3025
Permitted load	kg	585	585	585
Permitted axle load, front/rear	kg	1270/1720	1350/1750	1370/1750
Permitted roof load	kg	100	100	100

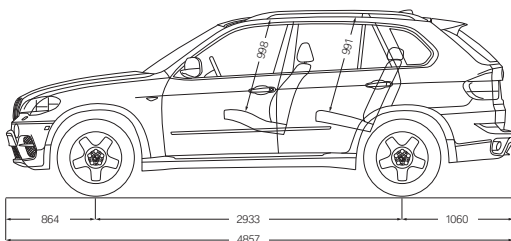
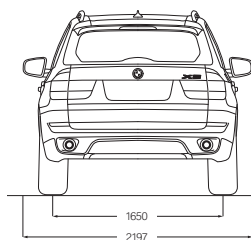
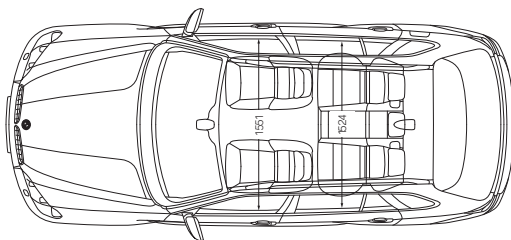
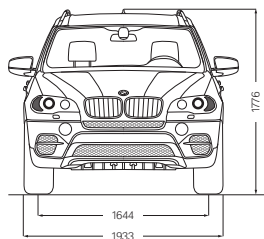
Engine		xDrive35i	xDrive35d	xDrive50i
Cylinders/valves		6/4	6/4	8/4
Capacity	cc	2979	2993	4395
Power	hp	300	265	400
	rpm	5800	4000	5500-6400
Torque	lb-ft	300	425	450
	rpm	1200-5000	1750-2250	1750-4500

Transmission		xDrive35i	xDrive35d	xDrive50i
Standard transmission ratios	III:1	4.71/3.14	4.17/2.34	4.71/3.14
	III/IV:1	2.10/1.67	1.52/1.14	2.10/1.67
	V/VI/R:1	1.29/1.00/3.30	0.87/0.69/3.4	1.29/1.00/3.32
	VII:1	0.84	—	0.84
	VIII:1	0.67	—	0.67
Final drive ratio	:1	3.15	3.64	3.15

Performance		xDrive35i	xDrive35d	xDrive50i
Acceleration 0 to 100 km/h	sec	6.8	7.4	5.6
Top speed ¹	km/h	240	210	240

Fuel consumption		xDrive35i	xDrive35d	xDrive50i
City	L/100 km	12.1	10.9	15.3
Highway	L/100 km	8.0	7.6	9.9
Combined	L/100 km	10.2	9.4	12.9
Tank capacity, approximately	l	85.0	85.0	85.0

Wheels		xDrive35i	xDrive35d	xDrive50i
Material		Light-alloy	Light-alloy	Light-alloy
Tire dimensions		255/55R-18	255/55R-18	255/50R-19
Wheel dimensions		18 x 8.5	18 x 8.5	19 x 19.0



All dimensions in the technical drawings are given in millimetres. Luggage compartment capacity 620 – 1750 litres.

¹ Electronically limited.

BMW Welt. Taking delivery of a new vehicle is a proud moment for every automotive enthusiast. Make it an even more unforgettable experience by visiting the BMW Welt, a state-of-the-art brand experience and delivery centre in Munich. Spend the day marvelling at historic BMWs on display in the Museum, learn about our engineers' newest innovations in the Technology and Design Studio, and take

a tour of our plant to experience with your own eyes the exacting methods used to create every BMW. Then get behind the wheel of your new BMW, where the fascination continues for years to come. To learn more, visit the BMW World online at www.bmw.ca/europeandelivery.

JOY IS THE FEELING OF BEING LOOKED AFTER BY THE BEST.



Service. When you buy a BMW, you can look forward to superb service and comprehensive customer care. 2011 model year BMW vehicles purchased from an authorized BMW Retailer in Canada are covered by No-Charge Scheduled Maintenance for four years or 80,000 kilometres, whichever occurs first. Your car informs you of its service requirements via the Service Interval Indicator or CBS (Condition Based Service). Then simply get in touch with your BMW Service Retailer, who will provide expert care for you and your car. Staffed by highly trained personnel, your BMW Service Retailer is also equipped with the latest computer-aided information and diagnostic tools. Important data such as V.I.N. number, mileage, and current service requirements are all stored on your car key, ensuring quick assessment of your vehicle's status. This means that staff have more time to help you. All in all, quality and safety are the watchwords of BMW Service.



BMW Roadside Assistance.

One of the most extensive roadside assistance programs in Canada. As a holder of the BMW Service Card, you and any additional drivers of your registered BMW will be entitled to an extensive range of services and benefits, including

- Emergency Service Calls
- Winching
- Towing, in case of Mechanical Breakdown
- Trip Interruption Benefits
- Traffic Accident Services
- Emergency Message Service
- Emergency Cash
- Travel Planning Services

For complete details and conditions, please refer to your BMW Warranty and Service Guide.



BMW.ca. Offering the ultimate online experience, our website is designed to offer you access to a wealth of information on BMW Service and BMW Financial Services, in an easy-to-explore format. When you visit our website, you will discover in-depth information on BMW Service, including details on the BMW Service Card, scheduled maintenance, warranty coverage, value service packages, and BMW SPA® services. Always up to date, our easy-to-navigate website allows you to quickly and easily find the information you require on your vehicle's servicing needs.



SHAPING THE FUTURE – RESPONSIBLY.

The BMW Group has been ranked the most sustainable automotive company worldwide in the Dow Jones Sustainability Index for the sixth time in a row. Sustainability is an integral part of our value chain – it encompasses every stage, from the development of fuel-saving and alternative vehicle concepts to environmentally friendly production processes and recycling. Our research and development philosophy BMW EfficientDynamics delivers tangible benefits to customers, our climate, and the environment. This is reflected in the reduction of CO₂ emissions by nearly 30% across our European fleet of new cars since 1995.



JOY COMES IN MANY FORMS.



BMW Financial Services.

BMW Financial Services offers a comprehensive portfolio of leasing and financing solutions, designed to make your transition from showroom to highway hassle-free. For information on how you can benefit from the flexibility, convenience, and expertise that only BMW Financial Services can offer, contact your local BMW Retailer or visit www.BMWfinance.ca. Our comprehensive website allows you to learn about the vast financing and leasing opportunities available. Interactive tools, including an advanced model selector/payment calculator, downloadable guides, and an online credit application, make it easy for you to interact with BMW Financial Services.



Magazine. How do the designers at BMW come up with the next generation of industry-leading vehicles? Who are the people behind the brand and the product? Read about this and much more in BMW Magazine, the official publication from BMW. Not available on newsstands, BMW Magazine is just another exclusive benefit of owning a BMW.



BMW Assist. Providing you with a suite of services that add confidence and convenience to your driving experience. You are just a push of a button away from emergency help, roadside assistance, and much more. When you have the BMW Assist Safety Plan, you enjoy peace of mind whenever you're behind the wheel. Speak to your preferred BMW Retailer or visit www.BMW.ca/assist for more information.

Car manufacturing requires a great deal of water, which is why we've developed an intelligent circulatory system for our factories that ensures water is reused as often as possible. The dream of a manufacturing process that does not produce any waste water has already been made a reality at our engine plant in Steyr. In 2008, 733,500 engines were manufactured without producing a single drop of waste water.

Sustainability is taken very seriously at the BMW Group. For this reason, we prioritize environmentally friendly methods of transport such as rail and shipping and work towards capacity optimization. Each year, we cover around 15.8 billion tonne-kilometres transporting materials and new vehicles. Of this, 79% of the total transported volume is delivered by sea – which benefits both road traffic and the environment.

The BMW Group has their sights set on tomorrow. Your BMW is part of a comprehensive recycling concept. Every single vehicle can be easily and economically recycled. Please contact your BMW partner on all matters regarding the return of your end-of-life vehicle. For more information visit

➤ www.bmw.ca/EfficientDynamics



The Ultimate
Driving Experience®

bmw.ca



All specifications, standard features, accessories, equipment, options, fabrics, and colours are based on product information available at the time of printing. BMW reserves the right to revise specifications at any time, without notice. Illustrations are representative only. BMW may determine the Model Year designation of its vehicles. Models may be shown with features, accessories, equipment, options, fabrics, and/or colours not available in Canada, or available only at extra cost, or available only on particular models. While BMW takes care to ensure that the information contained in this brochure is accurate, it cannot guarantee complete accuracy. BMW is not responsible for errors or omissions contained in this brochure. Further information about the products shown in this brochure can be obtained from your authorized BMW Retailer and at www.BMW.ca.
Printed 2011.

©2011 BMW Canada Inc. "BMW", the BMW logo, BMW model designations and all other BMW related marks, images and symbols are the exclusive properties and/or trademarks of BMW AG, used under licence.



Information Provided by:

BMW recommends

Castrol EDGE