



TOYOTA

2022 Prius

2022 PRIUS

Sometimes, compromising isn't necessary.

Have it all with the 2022 Toyota Prius. It's geared up to take on your every whim with its style, tech and capability features that'll leave you inspired. With ample cargo space and available AWD-e¹ potential, Prius continues to set the standard for the modern-day hybrid.



Limited shown in Supersonic Red² with available Premium Convenience Package. Top: XLE AWD-e¹ shown in Electric Storm Blue with available accessory cargo cross bars.



CAPABILITY

Don't just imagine the possibilities. Explore them.

Capable of much more than just city commutes, Prius offers ample cargo space for your impromptu adventures and planned itineraries. If up to 27.4 cu. ft. of space with the seats up or 50.7 cu. ft. with the seats folded flat isn't enough to hold all your gear,³ cargo cross bars are available to share the load. Seek out hidden gems — like that quiet surf spot or that bustling marketplace — in the 2022 Prius, and you'll be in your element.

Impressive fuel efficiency

With an EPA-estimated combined 52 mpg⁴, Prius encourages you to go farther than you thought possible. For AWD models, capability and efficiency work together for an EPA-estimated combined 49 mpg⁴. And for added efficiency, L Eco has up to an EPA-estimated combined 56 mpg⁴.

Cargo space

The ample cargo space in Prius leaves room for your tent, snowboard or gear of choice. Prius offers up to 50.7 cu. ft. of space with its 60/40 fold-down rear seats folded, maximizing cargo and versatility.³

Cross bars

Think outside the car. The available accessory cargo cross bars on Prius offer even more space — and possibilities — for your next adventure.⁵

AWD-e

Don't let inclement weather stop you. The available electronic all-wheel-drive feature on Prius was designed to give you four-wheel traction up to 43 mph.



XLE AWD-e¹ shown in Electric Storm Blue with available accessory cargo cross bars⁵ and interior shown in Black SofTex[®] trim. Center left: Limited shown in Supersonic Red² with available Premium Convenience Package.

EXTERIOR

Style to inspire your next escape.

From city streets to mountain highways, navigate all roads with style and confidence. The artfully sculpted exterior of Prius suits any setting, no matter where your curiosity takes you. Each striking feature is purposefully designed to encourage you to embrace more of life's moments with fewer compromises.



Available Nightshade Special Edition

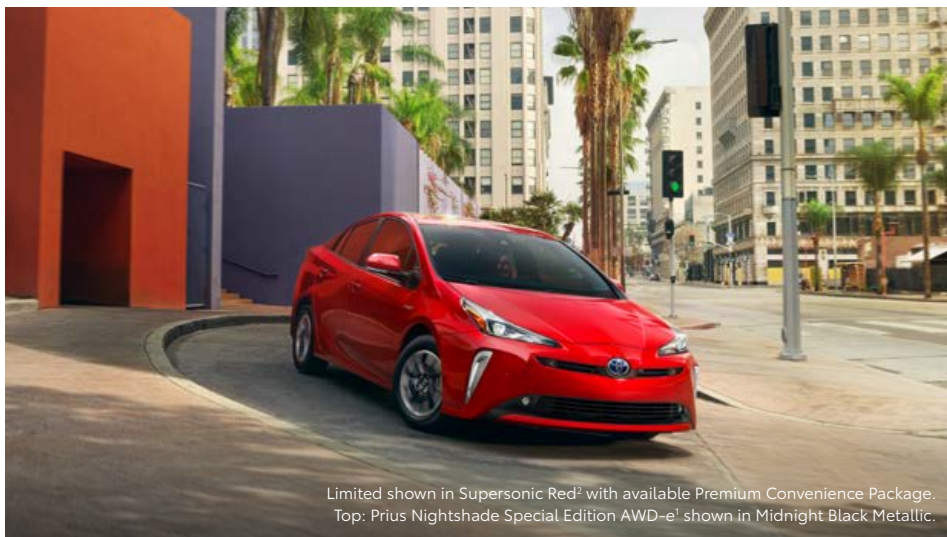
Take a bold stance with Prius Nightshade Special Edition. Blacked-out badging, wheels, handles and accents let you bring more attitude along for the ride.

Fog lights and LED accent lights

Rain or shine, Prius will take you there. Standard on Nightshade Edition and AWD-e¹ grades, the fog lights are designed to increase your visibility while driving through fog, and the LED accent lights add to the vehicle's stun factor.

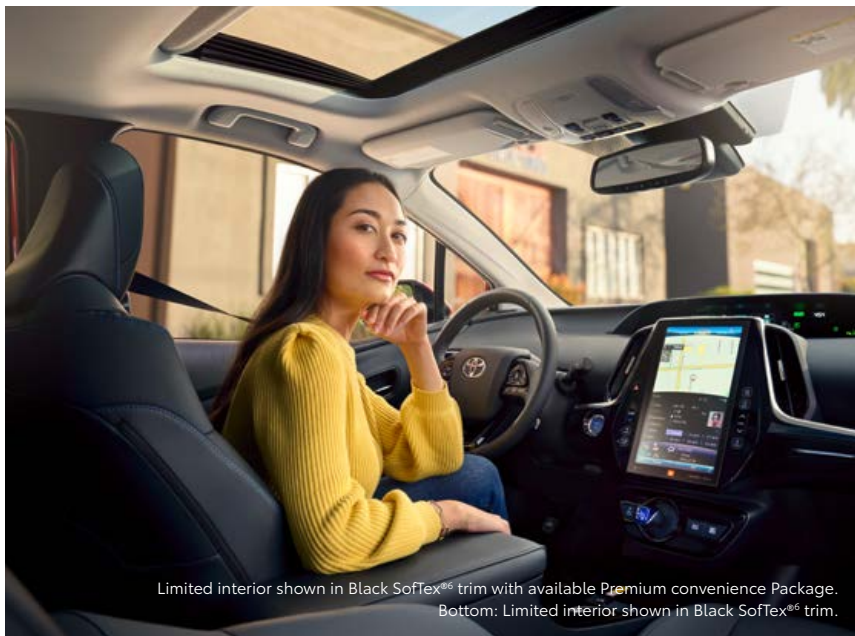
Sculpted exterior

Prius' sleek lines, active grille shutter, aero stabilizing fins and underbody panels all work together to smooth airflow, which in turn helps maximize fuel efficiency.



Limited shown in Supersonic Red² with available Premium Convenience Package. Top: Prius Nightshade Special Edition AWD-e¹ shown in Midnight Black Metallic.

See numbered footnotes in Disclosures section.



Limited interior shown in Black SofTex^{®6} trim with available Premium convenience Package.
Bottom: Limited interior shown in Black SofTex^{®6} trim.

Interior styling

Modern touches on Prius, like an available moonroof and updated tech, ensure that style and convenience can live in harmony.

INTERIOR

More reasons to take the long way home.

Designed for your convenience, Prius' interior features the latest tech, like available Premium JBL^{®7} Audio and the color Head-Up Display (HUD) that uses aircraft-inspired technology to project important information right onto the windshield. Stylish touches further elevate your driving experience.

11.6-in. multimedia display

You'll want to take note of this. Prius' available 11.6-in. display uses intuitive pinch, zoom, tap and swipe gestures that create a familiar smartphone-like experience while giving you easy access to the features that matter most.

Qi-compatible wireless charging

No wires. Total convenience. With available Qi-compatible wireless smartphone charging⁸, simply place your Qi-compatible device on the nonslip surface to charge it up on the go — without the interference of cords.



Amplify your drive.

Take advantage of smarter and convenient technologies designed to simplify your everyday life. From a suite of services that are there for you 24/7 to an immersive audio multimedia system, you can stay connected to your world.



Connected Services

Our available suite of Connected Services⁹ provides added convenience and peace of mind.

- ✓ **Safety Connect[®]**
Emergency SOS assistance and 24/7 Toyota Roadside Assistance.^{10, 11}
- ✓ **Service Connect**
Get personalized maintenance updates and vehicle health reports.¹²
- ✓ **Remote Connect**
Start, lock/unlock your doors and more, using your compatible smart device.¹³
- ✓ **Wi-Fi Connect**
Turn your Toyota into a hotspot with 4G connectivity.^{14, *}

To view included trial details, please visit toyota.com/connected-services.

Audio Multimedia

Make every drive more personal. By utilizing your vehicle's touchscreen display and audio multimedia capabilities, you'll always have access to what you want. Whether it's listening to your favorite playlist or finding the most scenic route to your destination, you'll enjoy the latest in connectivity and technologies that are all about you.



Apple CarPlay[®]

Bring along a familiar face. With Apple CarPlay^{®15} compatibility, you can use your compatible iPhone^{®16} with the audio multimedia system to get directions, make calls, send and receive messages, and listen to music — all while staying focused on your commute.



Android Auto[™]

Stay connected on the road. By pairing your compatible Android^{™17} phone with the audio multimedia system, Android Auto^{™18, *} lets you access your Google Assistant,⁵³ get real-time traffic alerts, make and receive phone calls, listen to your favorite soundtrack and more.



SiriusXM[®] w/3-month Platinum Plan trial subscription

SiriusXM^{®19} has premium entertainment that you won't hear anywhere else. With the Platinum Plan, you get 350+ channels, including 165+ channels in your vehicle, to enjoy ad-free music, plus sports, news, talk, comedy and more.²⁰



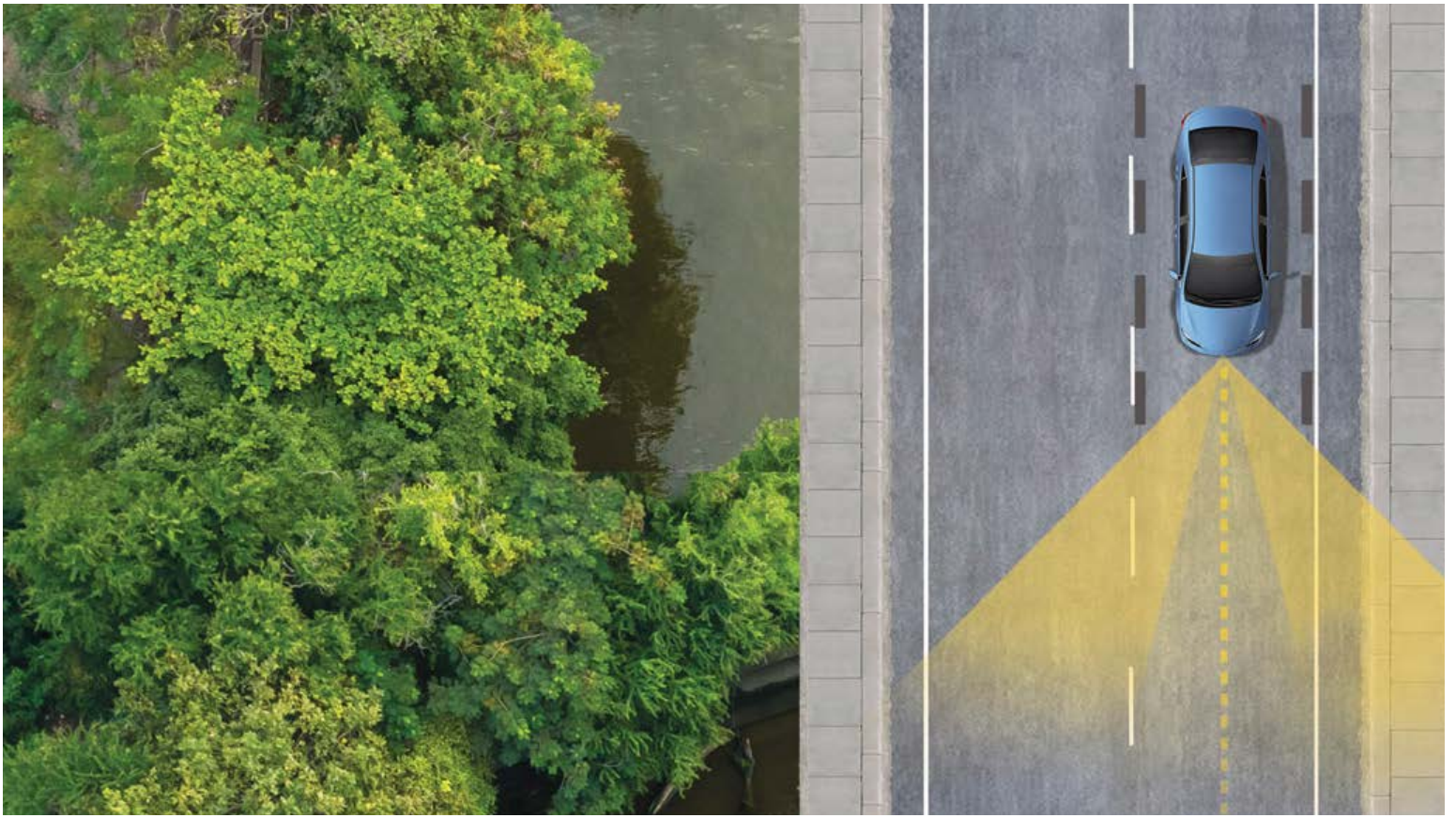
Amazon Alexa

Almost anywhere the road takes you, Amazon Alexa²¹ connectivity follows. With a smartphone connection and the Toyota+Alexa app, all you have to do is ask Alexa to play music, listen to audiobooks, hear the news, check weather, control smart-home devices and more.



JBL[®]

Feel the difference and hear the truth. Designed specifically for Toyota, JBL^{®7} finely tunes each speaker to the interior of the vehicle. Just turn up the volume to hear the crisp, rich, vibrant sound come through.



TOYOTA SAFETY SENSE™ 2.0 (TSS 2.0)

Peace of mind comes standard.

Toyota Safety Sense™ 2.0 (TSS 2.0)²² is a bundle of active safety features included on many new Toyota vehicles at no additional cost. These innovative features were designed to help protect you and your passengers from harm.



Pre-Collision System with Pedestrian Detection²³



Full-Speed Range Dynamic Radar Cruise Control²⁴



Lane Departure Alert with Steering Assist²⁵



Automatic High Beams²⁶



Lane Tracing Assist²⁷



Road Sign Assist²⁸

PRIUS MODELS



L Eco

Includes these key features:

Mechanical/Performance

- ✓ 1.8-Liter 4-Cylinder Aluminum DOHC 16-Valve with Variable Valve Timing with intelligence (VVT-i); 96 hp @ 5200 rpm (71 kW @ 5200 rpm), 105 lb.-ft. @ 3600 rpm (142 N•m @ 3600 rpm)
- ✓ Electronically controlled Continuously Variable Transmission (ECVT)
- ✓ Front-Wheel Drive (FWD)
- ✓ EV²⁹/Eco/POWER Modes
- ✓ Independent MacPherson strut front suspension with stabilizer bars; multi-link rear suspension with stabilizer bars
- ✓ Electric Power Steering (EPS); power-assisted rack-and-pinion
- ✓ 58 city/53 highway/56 combined est. mpg⁴

Exterior Features

- ✓ Bi-LED projector low- and high-beam headlights with auto-off feature
- ✓ LED Daytime Running Lights (DRL) with on/off feature
- ✓ LED taillights and stop lights
- ✓ LED clearance lamps
- ✓ Active grille shutter
- ✓ 15-in. 5-spoke alloy wheels with full wheel covers and P195/65R15 tires
- ✓ Heated power outside mirrors with folding feature

Interior Features

- ✓ Fabric-trimmed front seats; 6-way adjustable driver's seat; 4-way adjustable front passenger seat
- ✓ Smart-flow climate control system with pollen filtration
- ✓ 60/40 split fold-down rear seats with center armrest
- ✓ Full-Speed Range Dynamic Radar Cruise Control²⁴
- ✓ Tilt/telescopic steering wheel with audio, Multi-Information Display and Bluetooth^{®30} hands-free phone controls
- ✓ Digital instrumentation with speedometer, fuel gauge, odometer, current and average fuel economy, distance to empty, shift-position indicator and EV²⁹/Eco/POWER Mode indicators
- ✓ Smart Key System³¹ on driver's door with Push Button Start
- ✓ One front 12V auxiliary power outlet³²
- ✓ 4.2-in. color dual Multi-Information Display (MID)

Audio Multimedia

- ✓ Audio — 7-in. touchscreen and six speakers
- ✓ Android Auto^{™18} & Apple CarPlay^{®15} compatible
- ✓ SiriusXM^{®19} with 3-month Platinum Plan trial subscription²⁰
- ✓ Connected Services⁹ Safety Connect[®] trial¹⁰

Safety/Convenience

- ✓ Toyota Safety Sense[™] 2.0 (TSS 2.0)²²
- ✓ Star Safety System[™]
- ✓ Ten airbags³³
- ✓ Tire Pressure Monitor System (TPMS)³⁴
- ✓ Vehicle Proximity Notification System (VPNS)³⁵
- ✓ Integrated backup camera display³⁶



LE

Adds to or replaces features offered on L Eco

Mechanical/Performance

- ✓ 1.8-Liter 4-Cylinder Aluminum DOHC 16-Valve with Variable Valve Timing with intelligence (VVT-i); 96 hp @ 5200 rpm (71 kW @ 5200 rpm), 105 lb.-ft. @ 3600 rpm (142 N•m @ 3600 rpm)
- ✓ Electronically controlled Continuously Variable Transmission (ECVT)
- ✓ Front-Wheel Drive (FWD)
- ✓ EV²⁹/Eco/POWER Modes
- ✓ Independent MacPherson strut front suspension with stabilizer bars; multi-link rear suspension with stabilizer bars
- ✓ Electric Power Steering (EPS); power-assisted rack-and-pinion
- ✓ 54 city/50 highway/52 combined est. mpg⁴

Exterior Features

- ✓ Intermittent rear window wiper

Interior Features

- ✓ Fabric-trimmed front seats with extended seatback pockets; 6-way adjustable driver's seat; 4-way adjustable front passenger seat
- ✓ Cargo area tonneau cover

Audio Multimedia

- ✓ Audio — 7-in. touchscreen and six speakers
- ✓ Android Auto^{™18} & Apple CarPlay^{®15} compatible
- ✓ SiriusXM^{®19} with 3-month Platinum Plan trial subscription²⁰
- ✓ Connected Services⁹ Safety Connect[®] trial¹⁰

Safety/Convenience

- ✓ Toyota Safety Sense[™] 2.0 (TSS 2.0)²²
- ✓ Star Safety System[™]
- ✓ Ten airbags³³
- ✓ Tire Pressure Monitor System (TPMS)³⁴
- ✓ Vehicle Proximity Notification System (VPNS)³⁵
- ✓ Integrated backup camera display³⁶
- ✓ Intelligent Clearance Sonar (ICS)³⁷ with Intelligent Parking Assist (IPA)³⁸
- ✓ Blind Spot Monitor (BSM)³⁹ with Rear Cross-Traffic Alert (RCTA)⁴⁰



LE AWD-e¹

Adds to or replaces features offered on LE

Mechanical/Performance

- ✓ 1.8-Liter 4-Cylinder Aluminum DOHC 16-Valve with Variable Valve Timing with intelligence (VVT-i); 96 hp @ 5200 rpm (71 kW @ 5200 rpm), 105 lb.-ft. @ 3600 rpm (142 N•m @ 3600 rpm)
- ✓ Electronically controlled Continuously Variable Transmission (ECVT)
- ✓ Electronic On-Demand Compact All-Wheel Drive (AWD-e)¹
- ✓ EV²⁹/Eco/POWER Modes
- ✓ Independent MacPherson strut front suspension with stabilizer bars; multi-link rear suspension with stabilizer bars
- ✓ Electric Power Steering (EPS); power-assisted rack-and-pinion
- ✓ 51 city/47 highway/49 combined est. mpg⁴

Exterior Features

- ✓ Integrated fog lights and LED accent lights
- ✓ 15-in. 5-spoke alloy wheels with two-tone wheel covers and P195/65R15 tires

Interior Features

- ✓ 4.2-in. color dual Multi-Information Display (MID) with customizable screens including Energy Monitor, Hybrid System Indicator and Eco Score, Eco Savings Record, Drive Monitor, Eco Wallet, Eco Diary, Climate Control, Driver support systems, audio system content, and AWD-e¹ system indicator

Audio Multimedia

- ✓ Audio — 7-in. touchscreen and six speakers
- ✓ Android Auto^{™18} & Apple CarPlay^{®15} compatible
- ✓ SiriusXM^{®19} with 3-month Platinum Plan trial subscription²⁰
- ✓ Connected Services⁹ Safety Connect[®] trial¹⁰

Safety/Convenience

- ✓ Toyota Safety Sense[™] 2.0 (TSS 2.0)²²
- ✓ Star Safety System[™]
- ✓ Ten airbags³³
- ✓ Tire Pressure Monitor System (TPMS)³⁴
- ✓ Vehicle Proximity Notification System (VPNS)³⁵
- ✓ Integrated backup camera display³⁶
- ✓ Intelligent Clearance Sonar (ICS)³⁷ with Intelligent Parking Assist (IPA)³⁸
- ✓ Blind Spot Monitor (BSM)³⁹ with Rear Cross-Traffic Alert (RCTA)⁴⁰

PRIUS MODELS



XLE

Adds to or replaces features offered on LE

Mechanical/Performance

- ✓ 1.8-Liter 4-Cylinder Aluminum DOHC 16-Valve with Variable Valve Timing with intelligence (VVT-i); 96 hp @ 5200 rpm (71 kW @ 5200 rpm), 105 lb.-ft. @ 3600 rpm (142 N•m @ 3600 rpm)
- ✓ Electronically controlled Continuously Variable Transmission (ECVT)
- ✓ Front-Wheel Drive (FWD)
- ✓ EV²⁹/Eco/POWER Modes
- ✓ Independent MacPherson strut front suspension with stabilizer bars; multi-link rear suspension with stabilizer bars
- ✓ Electric Power Steering (EPS); power-assisted rack-and-pinion
- ✓ 54 city/50 highway/52 combined est. mpg⁴

Exterior Features

- ✓ Bi-LED projector low- and high-beam headlights with auto on/off feature
- ✓ Rain-sensing variable intermittent windshield wipers
- ✓ Integrated fog lights and LED accent lights
- ✓ 17-in. 5-spoke alloy wheels with titanium-finished wheel inserts and P215/45R17 tires

Interior Features

- ✓ SofTex[®]-trimmed⁶ heated front seats with extended seatback pockets; 8-way power-adjustable driver's seat including power lumbar support; 4-way adjustable front passenger seat
- ✓ SofTex[®]-trimmed⁶ heated tilt/telescopic steering wheel with audio, Multi-Information Display (MID) and Bluetooth[®] hands-free phone controls
- ✓ Smart Key System³¹ on three doors with Push Button Start and remote illuminated entry
- ✓ Auto-dimming rearview mirror with HomeLink^{®41}
- ✓ Qi-compatible wireless smartphone charging⁸ with charge indicator light

Audio Multimedia

- ✓ Audio — 7-in. touchscreen and six speakers
- ✓ Android Auto^{™18} & Apple CarPlay^{®15} compatible
- ✓ SiriusXM^{®19} with 3-month Platinum Plan trial subscription²⁰
- ✓ Connected Services⁹ Safety Connect[®] trial¹⁰

Options and Packages

- ✓ Premium Convenience Package
 - Power tilt/slide moonroof with sliding sunshade
 - 15-in. forged titanium-finished alloy wheels with P195/65R15 tires
- ✓ Advanced Technology Package
 - Color Head-Up Display (HUD) with speedometer, navigation (if equipped), and Hybrid System Indicator
 - Adaptive Front-Lighting System (AFS)⁴² with auto-leveling headlights

Safety/Convenience

- ✓ Toyota Safety Sense[™] 2.0 (TSS 2.0)²²
- ✓ Ten airbags³³
- ✓ Integrated backup camera display³⁶
- ✓ Hill Start Assist Control (HAC)⁴³
- ✓ Intelligent Clearance Sonar (ICS)³⁷ with Intelligent Parking Assist (IPA)³⁸
- ✓ Blind Spot Monitor (BSM)³⁹ with Rear Cross-Traffic Alert (RCTA)⁴⁰



XLE AWD-e¹

Adds to or replaces features offered on LE

Mechanical/Performance

- ✓ 1.8-Liter 4-Cylinder Aluminum DOHC 16-Valve with Variable Valve Timing with intelligence (VVT-i); 96 hp @ 5200 rpm (71 kW @ 5200 rpm), 105 lb.-ft. @ 3600 rpm (142 N•m @ 3600 rpm)
- ✓ Electronically controlled Continuously Variable Transmission (ECVT)
- ✓ Electronic On-Demand Compact All-Wheel Drive (AWD-e)¹
- ✓ EV²⁹/Eco/POWER Modes
- ✓ Independent MacPherson strut front suspension with stabilizer bars; multi-link rear suspension with stabilizer bars
- ✓ Electric Power Steering (EPS); power-assisted rack-and-pinion
- ✓ 51 city/47 highway/49 combined est. mpg⁴

Exterior Features

- ✓ Bi-LED projector low- and high-beam headlights with auto on/off feature
- ✓ Integrated fog lights and LED accent lights

Interior Features

- ✓ SofTex[®]-trimmed⁶ heated front seats with extended seatback pockets; 6-way adjustable driver's seat; 4-way adjustable front passenger seat
- ✓ SofTex[®]-trimmed⁶ heated tilt/telescopic steering wheel with audio, Multi-Information Display (MID) and Bluetooth[®] hands-free phone controls
- ✓ Smart Key System³¹ on three doors with Push Button Start and remote illuminated entry
- ✓ Auto-dimming rearview mirror with HomeLink^{®41}
- ✓ Qi-compatible wireless smartphone charging⁸ with charge indicator light

Audio Multimedia

- ✓ Audio — 7-in. touchscreen and six speakers
- ✓ Android Auto^{™18} & Apple CarPlay^{®15} compatible
- ✓ SiriusXM^{®19} with 3-month Platinum Plan trial subscription²⁰
- ✓ Connected Services⁹ Safety Connect[®] trial¹⁰

Options and Packages

- ✓ Advanced Technology Package
 - Color Head-Up Display (HUD) with speedometer, navigation (if equipped), and Hybrid System Indicator
 - Adaptive Front-Lighting System (AFS)⁴² with auto-leveling headlights

Safety/Convenience

- ✓ Toyota Safety Sense[™] 2.0 (TSS 2.0)²²
- ✓ Star Safety System[™]
- ✓ Ten airbags³³
- ✓ Tire Pressure Monitor System (TPMS)³⁴
- ✓ Vehicle Proximity Notification System (VPNS)³⁵
- ✓ Integrated backup camera display³⁶
- ✓ Intelligent Clearance Sonar (ICS)³⁷ with Intelligent Parking Assist (IPA)³⁸
- ✓ Blind Spot Monitor (BSM)³⁹ with Rear Cross-Traffic Alert (RCTA)⁴⁰



Limited

Adds to or replaces features offered on XLE

Mechanical/Performance

- ✓ 1.8-Liter 4-Cylinder Aluminum DOHC 16-Valve with Variable Valve Timing with intelligence (VVT-i); 96 hp @ 5200 rpm (71 kW @ 5200 rpm), 105 lb.-ft. @ 3600 rpm (142 N•m @ 3600 rpm)
- ✓ Electronically controlled Continuously Variable Transmission (ECVT)
- ✓ Front-Wheel Drive (FWD)
- ✓ EV²⁹/Eco/POWER Modes
- ✓ Independent MacPherson strut front suspension with stabilizer bars; multi-link rear suspension with stabilizer bars
- ✓ Electric Power Steering (EPS); power-assisted rack-and-pinion
- ✓ 54 city/50 highway/52 combined est. mpg⁴

Exterior Features

- ✓ Adaptive Front-Lighting System (AFS)⁴² with auto-leveling headlights
- ✓ Integrated fog lights and LED accent lights

Interior Features

- ✓ 4.2-in. color dual Multi-Information Display (MID)
- ✓ Smart Key System³¹ on three doors with Push Button Start and remote illuminated entry
- ✓ Auto-dimming rearview mirror with HomeLink^{®41}
- ✓ Qi-compatible wireless smartphone charging⁸ with charge indicator light
- ✓ Digital instrumentation with speedometer, fuel gauge, odometer, current and average fuel economy, distance to empty, shift-position indicator and EV²⁹/Eco/POWER Mode indicators

Audio Multimedia

- ✓ Premium Audio — 11.6-in. touchscreen and ten JBL^{®7} speakers including amplifier
- ✓ Integrated Navigation⁴⁵
- ✓ Apple CarPlay^{®15} compatible
- ✓ SiriusXM^{®19} with 3-month Platinum Plan trial subscription²⁰
- ✓ Connected Services⁹ Safety Connect[®] trial¹⁰

Options and Packages

- ✓ Premium Convenience Package
 - Power tilt/slide moonroof with sliding sunshade
 - 15-in. forged titanium-finished alloy wheels with P195/65R15 tires

Safety/Convenience

- ✓ Toyota Safety Sense[™] 2.0 (TSS 2.0)²²
- ✓ Star Safety System[™]
- ✓ Ten airbags³³
- ✓ Tire Pressure Monitor System (TPMS)³⁴
- ✓ Vehicle Proximity Notification System (VPNS)³⁵
- ✓ Integrated backup camera display³⁶
- ✓ Intelligent Clearance Sonar (ICS)³⁷ with Intelligent Parking Assist (IPA)³⁸
- ✓ Color Head-Up Display (HUD) with speedometer, navigation (if equipped) and Hybrid System Indicator
- ✓ Blind Spot Monitor (BSM)³⁹ with Rear Cross-Traffic Alert (RCTA)⁴⁰

PRIUS MODELS



Nightshade Edition

Adds to or replaces features offered on LE

Mechanical/Performance

- ✓ 1.8-Liter 4-Cylinder Aluminum DOHC 16-Valve with Variable Valve Timing with intelligence (VVT-i); 96 hp @ 5200 rpm (71 kW @ 5200 rpm), 105 lb.-ft. @ 3600 rpm (142 N·m @ 3600 rpm)
- ✓ Electronically controlled Continuously Variable Transmission (ECVT)
- ✓ Front-Wheel Drive (FWD)
- ✓ EV²⁹/Eco/POWER Modes
- ✓ Independent MacPherson strut front suspension with stabilizer bars; multi-link rear suspension with stabilizer bars
- ✓ Electric Power Steering (EPS); power-assisted rack-and-pinion
- ✓ 54 city/50 highway/52 combined est. mpg⁴

Exterior Features

- ✓ Black roof-mounted shark-fin antenna
- ✓ LED accent lights with black bezels
- ✓ Black model & grade badges
- ✓ Black headlight accents
- ✓ Black outside door handles
- ✓ Black outside mirror caps
- ✓ 17-in. 5-spoke alloy wheels with black lug nuts, piano-black wheel inserts and 215/45R17 tires
- ✓ Bi-LED projector low- and high-beam headlights with auto on/off feature
- ✓ Rain-sensing variable intermittent windshield wipers
- ✓ Integrated fog lights and LED accent lights

Interior Features

- ✓ SofTex[®]-trimmed⁶ heated front seats with extended seatback pockets; 8-way power-adjustable driver's seat including power lumbar support; 4-way adjustable front passenger seat
- ✓ SofTex[®]-trimmed⁶ heated tilt/telescopic steering wheel with audio, Multi-Information Display (MID) and Bluetooth[®]³⁰ hands-free phone controls
- ✓ Smart Key System³¹ on three doors with Push Button Start and remote illuminated entry
- ✓ Auto-dimming rearview mirror with HomeLink^{®41}
- ✓ Qi-compatible wireless smartphone charging⁸ with charge indicator light

Audio Multimedia

- ✓ Audio — 7-in. touchscreen and six speakers
- ✓ Android Auto^{™18} & Apple CarPlay^{®15} compatible
- ✓ SiriusXM^{®19} with 3-month Platinum Plan trial subscription²⁰
- ✓ Connected Services⁹ Safety Connect[®] trial¹⁰

Safety/Convenience

- ✓ Toyota Safety Sense[™] 2.0 (TSS 2.0)²²
- ✓ Ten airbags³³
- ✓ Integrated backup camera display³⁶
- ✓ Hill Start Assist Control (HAC)⁴³
- ✓ Intelligent Clearance Sonar (ICS)³⁷ with Intelligent Parking Assist (IPA)³⁸
- ✓ Blind Spot Monitor (BSM)³⁹ with Rear Cross-Traffic Alert (RCTA)⁴⁰



Nightshade Edition AWD-e¹

Adds to or replaces features offered on LE

Mechanical/Performance

- ✓ 1.8-Liter 4-Cylinder Aluminum DOHC 16 Valve with Variable Valve Timing with intelligence (VVT-i); 96 hp @ 5200 rpm (71 kW @ 5200 rpm), 105 lb.-ft. @ 3600 rpm (142 N·m @ 3600 rpm)
- ✓ Electronically controlled Continuously Variable Transmission (ECVT)
- ✓ Electronic On-Demand Compact All-Wheel Drive (AWD-e)¹
- ✓ EV²⁹/Eco/POWER Modes
- ✓ Independent MacPherson strut front suspension with stabilizer bars; multi-link rear suspension with stabilizer bars
- ✓ Electric Power Steering (EPS); power assisted rack-and-pinion
- ✓ 51 city/47 highway/49 combined est. mpg⁴

Exterior Features

- ✓ Black roof-mounted shark-fin antenna
- ✓ LED accent lights with black bezels
- ✓ Black model & grade badges
- ✓ Black headlight accents
- ✓ Black outside door handles
- ✓ Black outside mirror caps
- ✓ 15-in. 5-spoke black-painted alloy wheels with black lug nuts and 195/65R15 tires
- ✓ Bi-LED projector low- and high-beam headlights with auto on/off feature
- ✓ Rain-sensing variable intermittent windshield wipers
- ✓ Integrated fog lights and LED accent lights

Interior Features

- ✓ SofTex[®]-trimmed⁶ heated front seats with extended seatback pockets; 6-way adjustable driver's seat; 4-way adjustable front passenger seat
- ✓ SofTex[®]-trimmed⁶ heated tilt/telescopic steering wheel with audio, Multi-Information Display (MID) and Bluetooth[®]³⁰ hands-free phone controls
- ✓ Smart Key System³¹ on three doors with Push Button Start and remote illuminated entry
- ✓ Auto-dimming rearview mirror with HomeLink^{®41}
- ✓ Qi-compatible wireless smartphone charging⁸ with charge indicator light

Audio Multimedia

- ✓ Audio — 7-in. touchscreen and six speakers
- ✓ Android Auto^{™18} & Apple CarPlay^{®15} compatible
- ✓ SiriusXM^{®19} with 3-month Platinum Plan trial subscription²⁰
- ✓ Connected Services⁹ Safety Connect[®] trial¹⁰

Safety/Convenience

- ✓ Toyota Safety Sense[™] 2.0 (TSS 2.0)²²
- ✓ Star Safety System[™]
- ✓ Ten airbags³³
- ✓ Tire Pressure Monitor System (TPMS)³⁴
- ✓ Vehicle Proximity Notification System (VPNS)³⁵
- ✓ Integrated backup camera display³⁶
- ✓ Intelligent Clearance Sonar (ICS)³⁷ with Intelligent Parking Assist (IPA)³⁸
- ✓ Blind Spot Monitor (BSM)³⁹ with Rear Cross-Traffic Alert (RCTA)⁴⁰

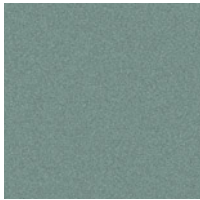
PRIUS COLORS & TRIMS



Midnight Black Metallic



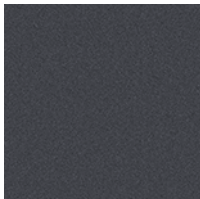
Electric Storm Blue



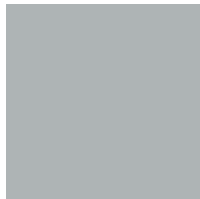
Sea Glass Pearl



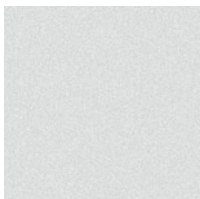
Supersonic Red²



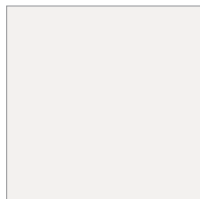
Magnetic Gray Metallic



Classic Silver Metallic



Wind Chill Pearl²



Super White

LE Eco fabric shown in Black



Moonstone

LE and LE AWD-e¹ fabric shown in Black



Moonstone



Harvest Beige

XLE, Limited and XLE AWD-e¹ SofTex® shown in Black



Moonstone



Harvest Beige

Nightshade Edition and Nightshade Edition AWD-e¹ SofTex® shown in Black



PRIUS WHEELS



L Eco and L 15-in. 5-spoke alloy wheels with full wheel covers



LE AWD-e¹ and XLE AWD-e¹ 15-in. 5-spoke alloy wheels with two-tone wheel covers



XLE and Limited 15-in. alloy wheels (available with Premium Convenience Package)



XLE and Limited 17-in. 5-spoke alloy wheels with titanium-finished wheel inserts



XLE and Limited 17-in. accessory black wheel inserts



Nightshade Edition wheel: 17-in. 5-spoke alloy wheels with black lug nuts and piano-black wheel inserts



Nightshade Edition AWD-e¹ wheel: 15-in. 5-spoke black-painted alloy wheels with black lug nuts

PRIUS ACCESSORIES

This is a great way to add extra personality to your Prius. Not every accessory is available in your area, so for a complete list of accessories, go to toyota.com/prius/accessories.



Aero side splitter



Alloy wheel locks



All-weather floor liners⁴⁴



Black wheel inserts



Body side moldings



Cargo liner³



Cargo net — envelope³



Cargo tote³



Carpet cargo mat³

PRIUS ACCESSORIES



Carpet floor mats⁴⁴



Coin holder ashtray cup



Door edge guards



Emergency assistance Kit



First aid kit with PPE



Frameless HomeLink^{®41} mirror



Illuminated doorsills



Paint protection film for hood, fenders, mirror backs and door cups⁴⁵



Rear bumper appliqué

WARRANTIES

Every Toyota Car, Truck and SUV is built to exceptional standards. And that's not idle boasting. We back it up with these Limited Warranty Coverages:

Basic: 36 months/36,000 miles (all components other than normal wear and maintenance items).

Hybrid-Related Component Coverage: Hybrid-related components, including the battery control module, hybrid control module and inverter with converter, are covered for 8 years/100,000 miles. Refer to applicable *Warranty and Maintenance Guide* for details.

Hybrid Battery: HV battery is covered for 10 years or 150,000 miles, whichever comes first. Warranty coverage is subject to terms and conditions. Refer to applicable *Warranty and Maintenance Guide* for details.

Powertrain: 60 months/60,000 miles (engine, transmission/transaxle, drive system, seatbelts and airbags).

Rust-Through: 60 months/unlimited miles (corrosion perforation of sheet metal).

Emissions: Coverages vary under Federal and California regulations. Refer to applicable *Warranty and Maintenance Guide* for details.

Accessories: For Genuine Toyota Accessories purchased at the time of the new vehicle purchase, the Toyota Accessory Warranty coverage is in effect for 36 months/36,000 miles from the vehicle's in-service date, which is the same coverage as the Toyota New Vehicle Limited Warranty.

For Genuine Toyota Accessories purchased after the new vehicle purchase the coverage is 12 months, regardless of mileage, from the date the accessory was installed on the vehicle, or the remainder of any applicable new vehicle warranty, whichever provides greater coverage.

You may be eligible for transportation assistance if it's necessary that your vehicle be kept overnight for repairs covered under warranty. Please see your authorized Toyota dealership for further details.

For complete details about Toyota's warranties, please visit www.toyota.com, refer to the applicable *Warranty and Maintenance Guide* or see your Toyota dealer.

PRIUS FEATURES⁴⁶

S = Standard O = Optional P = Available as part of a package

	L Eco	LE	XLE	Limited	LE AWD-e ¹	XLE AWD-e ¹	Nightshade Edition	Nightshade Edition AWD-e ¹
Exterior								
Bi-LED projector low- and high-beam headlights with auto-off feature	S	S			S			
Bi-LED projector low- and high-beam headlights with auto on/off feature			S	S		S	S	S
LED Daytime Running Lights (DRL) with on/off feature	S	S	S	S	S	S	S	S
Integrated fog lights and LED accent lights			S	S	S	S	S	S
Adaptive Front-Lighting System (AFS) ⁴² with auto-leveling headlights			P	S		P		
LED taillights and stop lights	S	S	S	S	S	S	S	S
LED clearance lights	S	S	S	S	S	S	S	S
Active grille shutter	S	S	S	S	S	S	S	S
Heated power outside mirrors with folding feature	S	S	S	S	S	S	S	S
Color-keyed outside door handles	S	S	S	S	S	S		
Power tilt/slide moonroof with sliding sunshade			P	P				
15-in. 5-spoke alloy wheels with full wheel covers and P195/65R15 tires	S	S						
15-in. 5-spoke alloy wheels with two-tone wheel covers and P195/65R15 tires					S	S		
17-in. 5-spoke alloy wheels with titanium-finished wheels inserts and P215/45R17 tires			S	S				
15-in. alloy wheels with P195/65R15 tires			P	P				
15-in. 5-spoke black-painted alloy wheels with black lug nuts and 195/65R15 tires								S
17-in. 5-spoke alloy wheels with black lug nuts, piano-black wheel inserts and 215/45R17 tires							S	
Washer-linked variable intermittent windshield wipers	S	S			S			
Rain-sensing variable intermittent windshield wipers			S	S		S	S	S
Intermittent rear window wiper		S	S	S	S	S	S	S
Color-keyed roof-mounted shark-fin antenna	S	S	S	S	S	S		
Black roof-mounted shark-fin antenna							S	S
LED accent lights with black bezels							S	S
Black model and grade badges							S	S
Black headlight accents							S	S
Black outside door handles							S	S
Black outside mirror caps							S	S
Interior								
Smart-flow climate control system with pollen filtration	S	S	S	S	S	S	S	S
4.2-in. color dual Multi-Information Display (MID) with customizable screens including Energy Monitor, Hybrid System Indicator and Eco Score, Eco Savings Record, Drive Monitor, Eco Wallet, Eco Diary, climate control, driver support systems, audio system content	S	S	S	S			S	
4.2-in. color dual Multi-Information Display (MID) with customizable screens including Energy Monitor, Hybrid System Indicator and Eco Score, Eco Savings Record, Drive Monitor, Eco Wallet, Eco Diary, climate control, driver support systems, audio system content and AWD-e ¹ system indicator					S	S		S
Fabric-trimmed front seats; 6-way adjustable driver's seat; 4-way adjustable front passenger seat	S							
Fabric-trimmed front seats with extended seatback pockets; 6-way adjustable driver's seat; 4-way adjustable front passenger seat		S			S			
SofTex®-trimmed ⁵ heated front seats with extended seatback pockets; 6-way adjustable driver's seat; 4-way adjustable front passenger seat						S		S
SofTex®-trimmed ⁶ heated front seats with extended seatback pockets; 8-way power-adjustable driver's seat including power lumbar support; 4-way adjustable front passenger seat			S	S			S	
60/40 split fold-down rear seats with center armrest	S	S	S	S	S	S	S	S

PRIUS FEATURES⁴⁶

S = Standard O = Optional P = Available as part of a package

Interior (continued)	L Eco	LE	XLE	Limited	LE AWD-e ¹	XLE AWD-e ¹	Nightshade Edition	Nightshade Edition AWD-e ¹
Full-Speed Range Dynamic Radar Cruise Control ²⁴ (DRCC)	S	S	S	S	S	S	S	S
Tilt/telescopic steering wheel with audio, Multi-Information Display (MID) and Bluetooth ^{®30} hands-free phone controls	S	S			S			
SofTex [®] -trimmed ⁵ heated tilt/telescopic steering wheel with audio, Multi-Information Display (MID) and Bluetooth ^{®30} hands-free phone controls			S	S		S	S	S
Digital instrumentation with speedometer, fuel gauge, odometer, current and average fuel economy, distance to empty, shift-position indicator and EV ²⁹ /Eco/POWER Mode indicators	S	S	S	S	S	S	S	S
Upper door trim with chrome accent, soft-touch door armrest area with chrome accent interior door handles	S	S			S			
Soft-touch upper door trim with chrome accent, SofTex [®] -trimmed ⁵ door armrest area with chrome accent interior door handles			S	S		S	S	S
Smart Key System ³¹ on driver's door with Push Button Start	S	S			S			
Smart Key System ³¹ on three doors with Push Button Start and remote illuminated entry			S	S		S	S	S
Power windows with auto up/down	S	S	S	S	S	S	S	S
Power door locks	S	S	S	S	S	S	S	S
Auto-dimming rearview mirror with HomeLink ^{®41}			S	S		S	S	S
Matte-black center console with armrest and storage compartment	S	S			S			
Semi-gloss black center console with armrest and storage compartment			S	S		S	S	S
Cargo area tonneau cover		S	S	S	S	S	S	S
One front 12V auxiliary power outlet ³²	S	S	S	S	S	S	S	S
Qi-compatible wireless smartphone charging ⁸ with charge indicator light			S	S		S	S	S
Extendable dual sun visors with illuminated vanity mirrors	S	S	S	S	S	S	S	S
Rear dome light and cargo area light	S	S	S	S	S	S	S	S
Two front and two rear cup holders; two front and two rear bottle holders	S	S	S	S	S	S	S	S

Audio Multimedia

Audio — 7-in. touchscreen, six speakers, Android Auto ^{™18} & Apple CarPlay ^{®15} & Amazon Alexa ²¹ compatible, SiriusXM ^{®19} with 3-month Platinum Plan trial subscription. ²⁰ See toyota.com/audio-multimedia for details.	S	S	S		S	S	S	S
Premium Audio with Integrated Navigation ⁴⁷ — 11.6-in. touchscreen with split-screen display, ten JBL ^{®7} speakers with amplifier, Apple CarPlay ^{®15} & Amazon Alexa ²¹ compatible, SiriusXM ^{®19} with 3-month Platinum Plan trial subscription. ²⁰ See toyota.com/audio-multimedia for details.				S				

PRIUS FEATURES⁴⁶

S = Standard O = Optional P = Available as part of a package

Safety/Convenience	L Eco	LE	XLE	Limited	LE AWD-e ¹	XLE AWD-e ¹	Nightshade Edition	Nightshade Edition AWD-e ¹
STAR SAFETY SYSTEM ™ Star Safety System™ — includes Enhanced Vehicle Stability Control (VSC), ⁴⁸ Traction Control (TRAC), Anti-lock Brake System (ABS), Electronic Brake-force Distribution (EBD), Brake Assist (BA) ⁴⁹ and Smart Stop Technology ⁸ (SST) ⁵⁰	S	S	S	S	S	S	S	S
Driver and front passenger Advanced Airbag System ³³	S	S	S	S	S	S	S	S
Driver and front passenger front seat-mounted side airbags, passenger seat cushion airbag, driver's knee airbag, rear airbags and front and rear curtain shield airbags ³³	S	S	S	S	S	S	S	S
LATCH (Lower Anchors and Tethers for CHildren) includes lower anchors on outboard rear seats and tether anchors on all rear seats	S	S	S	S	S	S	S	S
Tire Pressure Monitor System (TPMS) ³⁴	S	S	S	S	S	S	S	S
Vehicle Proximity Notification System (VPNS) ³⁵	S	S	S	S	S	S	S	S
Safety Connect ⁸ ¹⁰ — includes Emergency Assistance, Stolen Vehicle Locator, ⁵¹ Roadside Assistance ¹¹ and Automatic Collision Notification; with complimentary three-year trial subscription ¹⁰	S	S	S	S	S	S	S	S
Toyota Safety Sense™ 2.0 (TSS 2.0) ²² — Pre-Collision System with Pedestrian Detection (PCS w/PD), ²³ Lane Departure Alert with Steering Assist (LDA w/SA), ²⁵ Lane Tracing Assist (LTA), ²⁷ Automatic High Beams (AHB), ²⁶ Full-Speed Range Dynamic Radar Cruise Control (DRCC), ²⁴ Road Sign Assist (RSA) ²⁸	S	S	S	S	S	S	S	S
Intelligent Clearance Sonar (ICS) ³⁷ with Intelligent Parking Assist (IPA) ³⁸		S	S	S	S	S	S	S
Color Head-Up Display (HUD) with speedometer, navigation (if equipped) and Hybrid System Indicator			P	S		P		
Blind Spot Monitor (BSM) ³⁹ with Rear Cross-Traffic Alert (RCTA) ⁴⁰		S	S	S	S	S	S	S
Integrated backup camera display ³⁶	S	S	S	S	S	S	S	S
Rear seat reminder	S	S	S	S	S	S	S	S
Hill Start Assist Control (HAC) ⁴³	S	S	S	S	S	S	S	S
Engine immobilizer ⁵²	S	S	S	S	S	S	S	S

Packages

PREMIUM CONVENIENCE PACKAGE Power tilt/slide moonroof with sliding sunshade 15-in. forged titanium-finished alloy wheels with P195/65R15 tires			P	P				
ADVANCED TECHNOLOGY PACKAGE Color Head-Up Display (HUD) with speedometer, navigation (if equipped), and Hybrid System Indicator, Adaptive Front-Lighting System (AFS) ⁴² with auto-leveling headlights			P	S		P		

PRIUS SPECIFICATIONS

Mechanical

ENGINE	L Eco	LE	XLE	Limited	LE AWD-e ¹	XLE AWD-e ¹	Nightshade Edition	Nightshade Edition AWD-e ¹
Type: 1.8-Liter, 4-Cylinder Aluminum DOHC 16-Valve with Variable Valve Timing with intelligence (VVT-i), EV ²⁹ /Eco/POWER Modes; 96 hp @ 5200 rpm (71 kW @ 5200 rpm), 105 lb.-ft. @ 3600 rpm (142 N•m @ 3600 rpm)	S	S	S	S	S	S	S	S
Compression ratio: 13.0:1	S	S	S	S	S	S	S	S
Induction system: Sequential multi-point EFI with Electronic Throttle Control System with intelligence (ETCS-i)	S	S	S	S	S	S	S	S
EMISSION RATING								
SULEV with Advanced Technology Partial Zero Emission Vehicle (AT-PZEV)	S	S	S	S	S	S	S	S
ELECTRIC MOTOR								
Motor type: Permanent magnet AC synchronous motor	S	S	S	S	S	S	S	S
Motor type: Magnetless rear motor (5kW)					S	S		S

See numbered footnotes in Disclosures section.

PRIUS SPECIFICATIONS

S = Standard O = Optional P = Available as part of a package

	L Eco	LE	XLE	Limited	LE AWD-e ¹	XLE AWD-e ¹	Nightshade Edition	Nightshade Edition AWD-e ¹
ELECTRIC MOTOR (continued)								
Power output: 71 hp (53 kW)	S	S	S	S	S	S	S	S
Torque: 120 lb.-ft. (163 N•m)	S	S	S	S	S	S	S	S
Voltage: 600V maximum	S	S	S	S	S	S	S	S
Hybrid system net power: 121 hp (90kW)	S	S	S	S	S	S	S	S
TRACTION BATTERY								
Type: Sealed Nickel-Metal Hydride (Ni-MH) — Voltage: 201.6V					S	S		S
Type: Lithium-ion (Li-ion) — Voltage: 207.2V	S	S	S	S			S	
TRANSMISSION								
Electronically controlled Continuously Variable Transmission (ECVT)	S	S	S	S	S	S	S	S
DRIVETRAIN								
Front-Wheel Drive	S	S	S	S			S	
Electronic On-Demand Compact All-Wheel Drive (AWD-e) ¹					S	S		S
SUSPENSION								
Independent MacPherson strut front suspension with stabilizer bars; multi-link rear suspension with stabilizer bars	S	S	S	S	S	S	S	S
STEERING								
Electric Power Steering (EPS); power-assisted rack-and-pinion	S	S	S	S	S	S	S	S
Turning circle diameter, curb to curb (ft.)	33.5	33.5	35.4	35.4	33.5	33.5	35.4	33.5
BRAKE								
Power-assisted ventilated front disc brakes; solid rear disc with integrated regenerative braking and Star Safety System™	S	S	S	S	S	S	S	S

Dimensions

EXTERIOR DIMENSIONS (in.)								
Overall height/width/length	57.9/69.3/180.0	57.9/69.3/180.0	57.9/69.3/180.0	57.9/69.3/180.0	57.9/69.3/180.0	57.9/69.3/180.0	57.9/69.3/180.0	58.1/69.3/180.0
Wheelbase	106.3	106.3	106.3	106.3	106.3	106.3	106.3	106.3
Track (front/rear)	60.2/60.6	60.2/60.6	59.4/59.8	59.4/59.8	60.2/60.6	60.2/60.6	59.4/59.8	60.2/60.6
Overhang (front/rear)	37.8/36.0	37.8/36.0	37.8/36.0	37.8/36.0	37.8/36.0	37.8/36.0	37.8/36.0	37.8/36.0
Ground clearance	5.1	5.1	5.1	5.1	5.3	5.3	5.1	5.3
Coefficient of drag (Cd)	0.24	0.24	0.24	0.24	0.24	0.24	0.24	0.24
INTERIOR DIMENSIONS (front/rear) (in.)								
Head room	39.4/37.4	39.4/37.4	39.4/37.4	39.4/37.4	39.4/37.4	39.4/37.4	39.4/37.4	39.4/37.4
Shoulder room	55.0/53.0	55.0/53.0	55.0/53.0	55.0/53.0	55.0/53.0	55.0/53.0	55.0/53.0	55.0/53.0
Hip room	53.4/51.9	53.4/51.9	53.4/51.9	53.4/51.9	53.4/51.9	53.4/51.9	53.4/51.9	53.4/51.9
Leg room	42.3/33.4	42.3/33.4	42.3/33.4	42.3/33.4	42.3/33.4	42.3/33.4	42.3/33.4	42.3/33.4

Weights/Capacities

Curb weight (lb.)	3010	3040	3075	3075	3210	3220	3075	3220
Seating capacity	5	5	5	5	5	5	5	5
EPA passenger volume (cu. ft.)	93.1	93.1	93.1	93.1	93.1	93.1	93.1	93.1
EPA cargo volume (cu. ft.) ³ seats up/seats folded	27.4/50.7	27.4/50.7	27.4/50.7	27.4/50.7	24.6/47.9	24.6/47.9	27.4/50.7	24.6/47.9
Fuel tank (gal.)	11.3	11.3	11.3	11.3	10.6	10.6	11.3	10.6

Tires

SIZE								
P195/65R15	S	S	P	P	S	S		S
P215/45R17			S	S			S	
SPARE								
Temporary		S						
Tire repair kit	S		S	S	S	S	S	S

Mileage Estimates (mpg city/highway/combined)⁴

58/53/56	54/50/52	54/50/52	54/50/52	54/50/52	51/47/49	51/47/49	54/50/52	51/47/49
----------	----------	----------	----------	----------	----------	----------	----------	----------

See numbered footnotes in Disclosures section.

DISCLOSURES

1. Prius AWD-e system operates at speeds up to 43 mph. 2. Extra-cost color. 3. Cargo and load capacity limited by weight and distribution. Always properly secure cargo and cargo area. 4. EPA-estimated 58 city/53 hwy/56 combined mpg for 2022 Prius L Eco; EPA-estimated 54 city/50 hwy/52 combined mpg for 2022 Prius LE, XLE, Limited and Nightshade Edition; EPA-estimated 51 city/47 hwy/49 combined mpg for 2022 Prius LE AWD-e, XLE AWD-e and Nightshade Edition AWD-e. Use for comparison purposes only. Your mileage will vary for many reasons, including your vehicle's condition and how/where you drive. See www.fueleconomy.gov. 5. Do not overload your vehicle. See *Owner's Manual* for weight limits and restrictions. 6. SoTex® is a registered trademark of Toyota Motor Sales, U.S.A., Inc. 7. JBL® is a registered trademark of Harman International Industries, Inc. 8. Qi wireless charging may not be compatible with all mobile phones, MP3/WMA players and like models. When using the wireless charging system, avoid placing metal objects between the wireless charger and the mobile device when charging is active. Doing so may cause metal objects to become hot and could cause burns. 9. Connected Services depends on factors outside of Toyota's control, including an operative telematics device, a cellular connection, GPS signal, and the availability of a compatible wireless network, without which system functionality and availability may be limited or precluded, including access to response center and emergency support. Service may vary by vehicle and region. Subscription required after trial. Terms of Use apply. Data charges may apply. Apps and services subject to change at any time without notice. See toyota.com/connected-services for details. To learn about Toyota's Connected Services data collection, use, sharing and retention practices, please visit <https://www.toyota.com/privacyvts/>. Stolen vehicle police report required to use Stolen Vehicle Locator. Connected Services by Toyota trials are at no extra cost. All trials begin on the original date of purchase or lease of a new vehicle, with the exception of Wi-Fi for which the trial begins at the time of activation. Paid subscription required after trial in order to continue accessing the respective services. Terms of Use apply. 10. Safety Connect® depends on factors outside of Toyota's control, including an operative telematics device, a cellular connection, GPS signal, and the availability of a compatible wireless network, without which system functionality and availability may be limited or precluded, including access to response center and emergency support. Stolen vehicle police report required to use Stolen Vehicle Locator. Some features may require the Toyota app. Registration required. Subscription required after trial. Service subject to change at any time without notice. Terms of Use apply. Data charges may apply. Service may vary by vehicle and region. See usage precautions and service limitations in *Owner's Manual* and at toyota.com/connected-services/ for additional details. To learn about Toyota's Connected Services data collection, use, sharing and retention practices, please visit <https://www.toyota.com/privacyvts/>. The Safety Connect® trial period is at no extra cost and begins on the original date of purchase or lease of a new vehicle. Subscription required after trial. Service Connect renewal will be included when Safety Connect®, Remote Connect or Destination Assist connected service renewal is selected. Service Connect is not renewable as a stand-alone service. 11. Use only if aware of circumstances surrounding vehicle and it is legal and safe to do so (e.g., do not remotely start engine if vehicle is in an enclosed space or vehicle is occupied by a child). Toyota Remote Connect depends on factors outside of Toyota's control, including an operative telematics device, a cellular connection, GPS signal, and the availability of a compatible wireless network, without which system functionality and availability may be limited or precluded. Service may vary by vehicle and region. Registration and Toyota app download required. Subscription required after trial. Terms of Use apply. Data charges may apply. Remote start/stop not available on manual transmission-equipped vehicles. Services subject to change at any time without notice. See usage precautions and service limitations in Toyota *Owner's Manual* and at <https://www.toyota.com/connected-services> for additional details. To learn about Toyota's Connected Services data collection, use, sharing and retention practices, please visit <https://www.toyota.com/privacyvts/>. The Toyota Remote Connect trial period is at no extra cost and begins on the original date of purchase or lease of a new vehicle. Paid subscription required after trial to access the service. Terms of Use apply. 14. Eligible vehicle and wireless service required. Wi-Fi Connect depends on factors outside of Toyota's control, including an operative telematics device, a cellular connection, GPS signal, and the availability of a compatible wireless network, without which system functionality and availability may be limited or precluded. Wi-Fi Connect coverage and service not available everywhere. Valid in the contiguous U.S. and Alaska. Do not drive distracted. Go to att.com/toyota for terms and conditions. Data usage and charges apply. Up to 5 devices can be supported using in-vehicle connectivity. Apps and services subject to change at any time without notice. The Wi-Fi Connect trial begins at the time of activation and expires when 2GB of data is used or when the 3-month period ends. Subscription required after trial. Terms and conditions apply. 15. Apps and services are subject to change at any time without notice. Data charges may apply. Apple CarPlay® functionality requires a compatible iPhone® connected with an approved data cable into the USB media port. Apple CarPlay® is a registered trademark of Apple Inc. 16. iPhone® is a registered trademark of Apple Inc. All rights reserved. 17. Android is a trademark of Google LLC. 18. Vehicle user interface is a product of Google and its terms and privacy statement apply. To use Android Auto on your audio display, you'll need an Android Auto compatible vehicle and Android phone. For phone compatibility visit: <https://www.android.com/autof/>. Requires compatible smartphone connected with an approved data cable into the USB media port, and data plan rates apply. Apps and services vary by phone carrier and are subject to change at any time without notice. Android, Android Auto and Waze are trademarks of Google. 19. Trial length and service availability may vary by model, model year or trim. Service will automatically stop at the end of your trial subscription period unless you decide to continue service. If you do not wish to enjoy your trial, you can cancel by calling the number below. All SiriusXM services require a subscription, each sold separately by SiriusXM after the trial period. **Service subject to the SiriusXM Customer Agreement and Privacy Policy; visit www.siriusxm.com to see complete terms and how to cancel which includes calling 1-866-635-2349.** Some services and features are subject to device capabilities and location availability. All fees, content and features are subject to change. SiriusXM, Pandora and all related logos are trademarks of Sirius XM Radio Inc. and its respective subsidiaries. 20. SiriusXM trial length and service availability may vary by model, model year or trim. 21. Amazon, Alexa and all related logos are trademarks of Amazon.com, Inc. or its affiliates. Certain functions require adequate signal strength and smartphone technology/connectivity. Not all Amazon Alexa functionality is available for in-vehicle use. See applicable app for details. Download of the Toyota+Alexa app is required to begin in-vehicle use of Alexa. Data charges may apply for certain functions. Apps, prices and services subject to change at any time without notice. To learn more, go to <https://www.toyota.com/audio-multimedia>. To learn more about Toyota's data collection, use, sharing and retention practices, please visit <https://www.toyota.com/privacyvts/>. 22. Toyota Safety Sense™ effectiveness is dependent on many factors including road, weather and vehicle conditions. Drivers are responsible for their own safe driving. Always pay attention to your surroundings and drive safely. See *Owner's Manual* for additional limitations and details. 23. The Pre-Collision System (PCS) with Pedestrian Detection (PD) is designed to determine if impact is imminent and help reduce impact speed and damage in certain frontal collisions involving a vehicle, a pedestrian or a bicyclist. PCS w/PD is not a substitute for safe and attentive driving. System effectiveness depends on many factors, such as speed, size and position of pedestrian or bicyclist and weather, light and road conditions. See *Owner's Manual* for additional limitations and details. 24. Full-Speed Range Dynamic Radar Cruise Control (DRCC) is designed to assist the driver and is not a substitute for safe and attentive driving practices. System effectiveness is dependent on many factors including road, weather and traffic conditions. Vehicles with manual transmission have regular DRCC. See *Owner's Manual* for additional limitations and details. 25. Lane Departure Alert with Steering Assist is designed to read visible lane markers under certain conditions. It provides a visual and audible alert and slight steering force when lane departure is detected. It is not a collision-avoidance system or a substitute for safe and attentive driving. Effectiveness is dependent on many factors including road, weather and vehicle conditions. See *Owner's Manual* for additional limitations and details. 26. Automatic High Beams operate at speeds above 25 mph. Factors such as a dirty windshield, weather, lighting and terrain limit effectiveness, requiring the driver to manually operate the high beams. See *Owner's Manual* for additional limitations and details. 27. Lane Tracing Assist (LTA) is designed to read visible lane markers and detect other vehicles under certain conditions. It is only operational when DRCC is engaged. See *Owner's Manual* for additional limitations and details. 28. Do not rely exclusively on Road Sign Assist (RSA). RSA is a driver support system that utilizes the vehicle's forward-facing camera and navigation system (when data is available) to recognize certain road signs and provide information to the driver via the multi-information display and/or Head-Up Display. Effectiveness is dependent on road, weather, vehicle and sign conditions. Use common sense when using RSA and do not drive distracted. See *Owner's Manual* for additional limitations and details. 29. EV Mode lets you operate solely on battery power at low speeds for short distances and in limited circumstances, such as in a parking garage. Different conditions may prevent or limit usage. See your *Owner's Manual* for limitations and details. 30. The Bluetooth® word mark and logos are registered trademarks owned by Bluetooth SIG, Inc., and any use of such marks by Toyota is under license. A compatible Bluetooth®-enabled phone must first be paired. Phone performance depends on software, coverage and carrier. 31. The Smart Key System may interfere with some pacemakers or cardiac defibrillators. If you have one of these medical devices, please talk to your doctor to see if you should deactivate this system. 32. Rated for 12 volts/10 amps. See *Owner's Manual* for additional limitations and details. 33. Airbag systems are Supplemental Restraint Systems and are designed to inflate only under certain conditions and in certain types of severe collisions. To decrease the risk of injury from an inflating airbag, always wear seatbelts and sit upright in the middle of the seat as far back as possible. Do not put objects in front of an airbag or around the seatback. Do not use a rearward-facing child seat in any front passenger seat. See *Owner's Manual* for additional limitations and details. 34. The Tire Pressure Monitor System alerts the driver when tire pressure is critically low. For optimal tire wear and performance, tire pressure should be checked regularly with a gauge; do not rely solely on the monitor system. See *Owner's Manual* for additional limitations and details. 35. This device is not a substitute for safe and attentive driving practices. It is the driver's responsibility to maintain a lookout for pedestrians, cyclists, other cars and objects, and to drive the vehicle in a safe and attentive manner to avoid making contact. 36. The backup camera does not provide a comprehensive view of the rear area of the vehicle and you should also look around the vehicle, using mirrors to confirm rearward clearance. Environmental conditions may limit effectiveness and view may become obscured. See *Owner's Manual* for additional limitations and details. 37. Intelligent Clearance Sonar (ICS) is designed to assist drivers in avoiding potential forward and rearward collisions at speeds of 9 mph or less. Certain vehicle and environmental factors, including an object's shape, size and composition, may affect the system's effectiveness. Always look around outside the vehicle and use mirrors to confirm clearance. See *Owner's Manual* for additional limitations and details. 38. The Intelligent Parking Assist system requires driver brake control. Always look around outside the vehicle and use mirrors to confirm clearance. See *Owner's Manual* for additional limitations and details. 39. Do not rely exclusively on the Blind Spot Monitor. Always look over your shoulder and use your turn signal. There are limitations to the function, detection and range of the monitor. See *Owner's Manual* for additional limitations and details. 40. Do not rely exclusively on the Rear Cross-Traffic Alert system. Always look over your shoulder and use your mirrors to confirm rear clearance. There are limitations to the function, detection and range of the system. See *Owner's Manual* for additional limitations and details. 41. HomeLink® and the HomeLink® house icon are registered trademarks of Gentex Corporation. 42. The Adaptive Front-Lighting System helps improve night vision. Situations such as a dirty windshield, rapidly changing light conditions or hilly terrain may limit effectiveness, requiring the

DISCLOSURES

driver to manually turn off the system. See *Owner's Manual* for additional limitations and details. **43.** Hill Start Assist Control is designed to help minimize backward rolling on steep ascents. It is not a substitute for safe driving judgment and practices. Factors including speed, grade, surface conditions and driver input can all affect whether HAC will be effective in preventing a loss of control. See *Owner's Manual* for additional limitations and details. **44.** This floor mat/floor liner was designed specifically for use in your model and model year vehicle and SHOULD NOT be used in any other vehicle. To avoid potential interference with pedal operation, each mat/liner must be secured with its fasteners. Do not install a floor mat/floor liner on top of an existing floor mat/floor liner. **45.** Genuine Toyota Paint Protection Film by 3M™ is designed for specific sections of the vehicle most prone to chipping and may vary depending on vehicle model. Select applications may require an additional charge. Toyota Genuine Accessory Warranty only applies when installation is performed by a trained Toyota-approved installer. See Toyota dealer for details. **46.** Toyota strives to build vehicles to match customer interest and thus they typically are built with popular options and option packages. Not all options/packages are available separately and some may not be available in all regions of the country. See toyota.com for information about options/packages commonly available in your area. If you would prefer a vehicle without any or with different options, contact your dealer to check for current availability or the possibility of placing a special order. Color(s) depicted may vary based on multiple factors, including ambient lighting and the format in which it is being viewed (e.g., computer, mobile device or print). **47.** Be sure to obey traffic regulations and maintain awareness of road and traffic conditions at all times. Functionality, availability and accuracy of information provided by the system depends on many factors and service may not be available in every location. Use common sense when relying on information provided. Apps/services vary by phone/carrier. Select apps use large amounts of data; you are responsible for charges. Apps and services subject to change at any time without notice. See toyota.com/connected-services for details. Services and programming subject to change. Updates may be available from your dealer at an additional cost. See *Owner's Manual* for additional limitations and details. **48.** Vehicle Stability Control is an electronic system designed to help the driver maintain vehicle control under adverse conditions. It is not a substitute for safe and attentive driving practices. Factors including speed, road conditions, weather and driver steering input can all affect whether VSC will be effective in preventing a loss of control. See *Owner's Manual* for additional limitations and details. **49.** Brake Assist is designed to help the driver take advantage of ABS and is not a substitute for safe driving practices. Braking effectiveness also depends on proper vehicle maintenance, tire and road conditions. See *Owner's Manual* for additional limitations and details. **50.** Smart Stop Technology® operates only in the event of certain contemporaneous brake and accelerator pedal applications. When engaged, the system will reduce power to help the brakes bring the vehicle to a stop. Factors including speed, road conditions and driver input can all impact stopping distance. Smart Stop Technology® is not a substitute for safe and attentive driving and does not guarantee instant stopping. See *Owner's Manual* for additional limitations and details. **51.** Building and/or parking structures may limit system effectiveness. Stolen vehicle police report required to use Stolen Vehicle Locator. For additional assistance contact the Toyota Customer Experience Center at 1-800-331-4331. **52.** The engine immobilizer is a state-of-the-art anti-theft system that is initiated when you insert your key into the ignition switch or bring a Smart Key fob into the vehicle. The engine will only start if the code in the transponder chip inside the key/fob matches the code in the vehicle's immobilizer. The transponder chip is embedded in the key/fob and can be costly to replace. If you lose a key or fob, your Toyota dealer can help or go to www.aloa.org to find a qualified locksmith in your area who can perform high-security key service. **53.** Google is a trademark of Google LLC.

Toyota strives to build vehicles to match customer interest and thus they typically are built with popular options and option packages. Not all options/packages are available separately and some may not be available in all regions of the country. See toyota.com for information about options/packages commonly available in your area. If you would prefer a vehicle without any or with different options, contact your dealer to check for current availability or the possibility of placing a special order.

Color(s) depicted may vary based on multiple factors, including ambient lighting and the format in which it is being viewed (e.g., computer, mobile device or print).

Toyota PRIUS is designed to meet most off-road driving requirements. Abusive use may result in bodily harm or damage. Toyota encourages responsible operation to protect you, your vehicle and the environment. Seatbelts should be worn at all times. Please do not allow passengers to ride in the cargo area. Towing hitch receiver/ball mount kits are not intended to provide crash protection. For details on vehicle specifications, standard features and available equipment in your area, contact your Toyota dealer. A vehicle with particular equipment may not be available at the dealership. Ask your Toyota dealer to help locate a specifically equipped vehicle.

All information presented herein is based on data available at the time of posting, is subject to change without notice and pertains specifically to mainland U.S.A. vehicles only. Vehicles shown may be prototypes, shown using visual effects and/or shown with options. Actual models may vary.



Mobility

For Toyota Mobility program details, go to www.toyota.com/mobility or call the Toyota Brand Engagement Center at 1-800-331-4331