



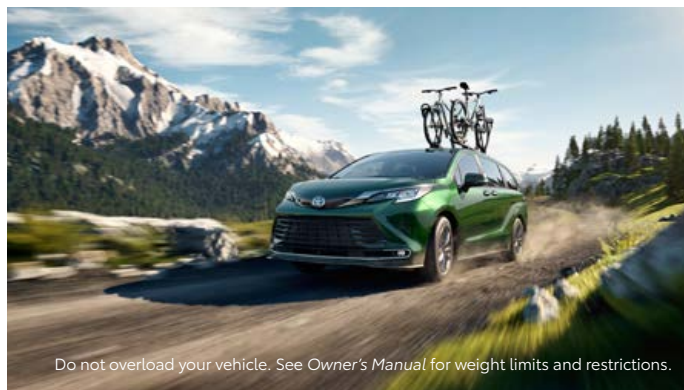
**TOYOTA**

2022 Sienna

2022 SIENNA

# More than enough.

Stylish on the outside. Functional on the inside. Sienna effortlessly works with your lifestyle. Standard Apple CarPlay<sup>®1</sup> and Android Auto<sup>™2</sup> compatibility lets you bring your favorite apps along for the ride. On unfamiliar roads, its available All-Wheel Drive (AWD) system helps keep you in control. And standard Toyota Safety Sense<sup>™</sup> 2.0 (TSS 2.0)<sup>3</sup> and ToyotaCare<sup>4</sup> help you drive with added peace of mind. Wherever you go, Sienna's versatility will inspire you to take on the day — and look good while doing it.



See numbered footnotes in Disclosures section.



XSE shown in Ruby Flare Pearl<sup>®</sup> with available XSE Plus Package. Right top: Platinum shown in Predawn Gray Mica. Right bottom: Limited AWD shown in Cypress.



## Sporty styling

With available 20-in. dark wheels and black sporty accents, including a honeycomb grille, Sienna's modern design matches your sense of style.

## EXTERIOR

# Style, with room to spare.

Whether you're going to your daughter's dance recital or taking your partner out for date night, Sienna's picture-perfect look is ready for any occasion.

## Premium exterior

Sienna is as stylish as it is functional. Its unmistakable silhouette inspires you to accomplish whatever's on the agenda, in style.

## Impressive color

Stand out from the pack with Sienna's available Cypress green exterior color.

WOODLAND EDITION

# When adventure calls everyone.

Adventures won't take a back seat in the Sienna Woodland Edition, which is equipped with more standard features and accessories. Its raised ride height, All-Wheel Drive (AWD) capability and roof rails<sup>6</sup> with cross bars give you the extra utility and versatility to go see what's out there.



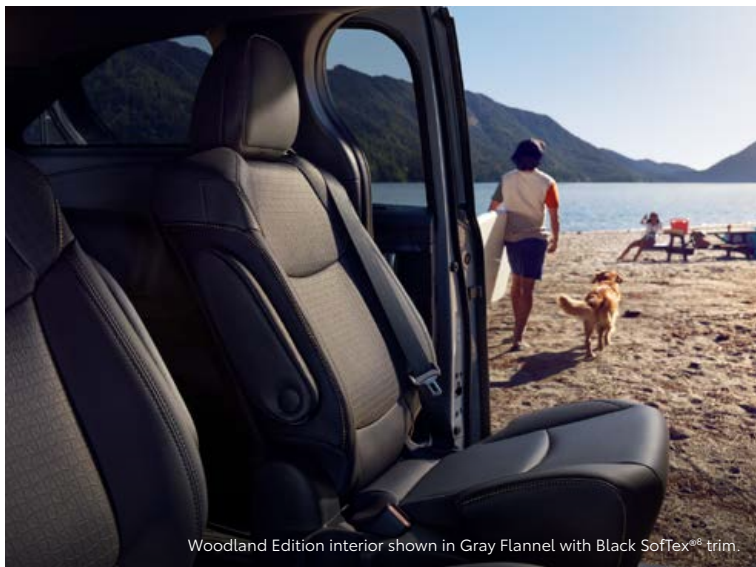
Woodland Edition shown in Cement. See footnotes 6 and 7 in Disclosures section for more information on roof payload and towing, respectively.



Woodland Edition shown in Cement. See footnote 7 in Disclosures section for more information on towing.

## Standard tow hitch

With an added tow hitch that lets Sienna tow up to 3500 lbs<sup>7</sup>, bringing along more gear just means more fun.



Woodland Edition interior shown in Gray Flannel with Black SofTex<sup>®</sup> trim.

## Unique seat design

Sienna Woodland Edition exterior's dark chrome accents and black badging are set off by a complementary interior. Black SofTex<sup>®</sup> sport-trimmed seats feature a unique color of stitching that raises the bar in style and comfort.

See numbered footnotes in Disclosures section.

INTERIOR

# Full of good ideas.

The moment you sit behind the wheel of Sienna, you're the one in control. With no inch overlooked, Sienna's thoughtfully designed interior is the ideal balance of function and style.



## Second-row captain's chairs

Sienna's available super-long-slide seats and captain's chairs with built-in ottomans<sup>9</sup> slide back for enhanced comfort, or move up to make more room for cargo or passengers in the third row.

## Hands-free power sliding side doors and liftgate

Need an extra hand? Simply use a quick kicking motion with your foot to open and close Sienna's available kick-activated dual power sliding door and rear liftgate, to make getting in and out easier.<sup>10</sup>

## 1500W-capable power outlet

Bring the comforts of home wherever you go. With Sienna's available 1500W-capable power outlet, you can power a slow cooker or quickly inflate an air mattress!<sup>11</sup>



XSE shown in Ruby Flare Pearl.<sup>5</sup>

### Sport-tuned suspension

Sienna doesn't compromise on performance. Its available sport-tuned suspension helps deliver a dynamic drive every time you get behind the wheel.



Limited AWD shown in Cypress. Do not overload your vehicle. See *Owner's Manual* for weight limits and restrictions.

### All-Wheel Drive

On gravel, rain or snow, Sienna's available All-Wheel Drive (AWD) system helps give you confidence on unfamiliar roads.

## PERFORMANCE

# Keeps up with your hustle.

Every Sienna is a hybrid. Whether you're driving around the city during the day or taking a weekend road trip, Sienna's class-leading EPA-estimated 36 combined mpg helps keep you going!<sup>1,2</sup>



Platinum shown in Predawn Gray Mica, and XSE shown in Ruby Flare Pearl.<sup>5</sup>

COMFORT

# Refined in all the right ways.



XSE interior shown in Moonstone with Gray Flannel SoftTex® trim.

## Four-zone climate control

You like it hot. Your partner likes it cool. Your son needs it to be 70 degrees exactly. And your dog likes it toasty. Using Sienna's available best-in-class four-zone climate control system,<sup>3</sup> you can set the temperature for each zone so everyone can keep their cool.



Platinum interior shown in Noble Brown leather trim.

## Rear-seat entertainment center

On road trips or campouts, passengers can watch their favorite shows in the back with Sienna's available 1080p HD rear-seat entertainment center.



Platinum interior shown in Noble Brown leather trim.

## Heated and ventilated front seats

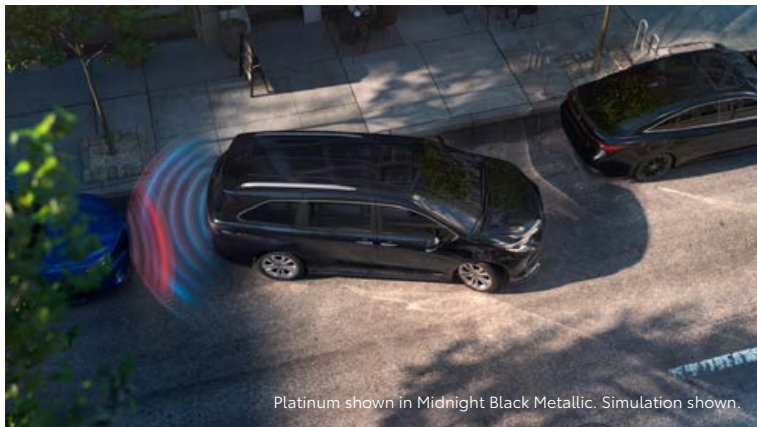
Sienna's available heated and ventilated front seats and heated rear captain's chairs bring enhanced comfort — no matter the season.

See numbered footnotes in Disclosures section.

CONVENIENCE

# A real people pleaser.

Forget to lock your doors at your nephew's play? Use your compatible smart device to lock the doors<sup>21</sup> without missing the opening scene. And when your trunk is filled with supplies for your next passion project, Sienna's available digital rearview mirror gives you a wider, unobstructed field of view. Loaded with all the bells and whistles, Sienna helps keep you in control.



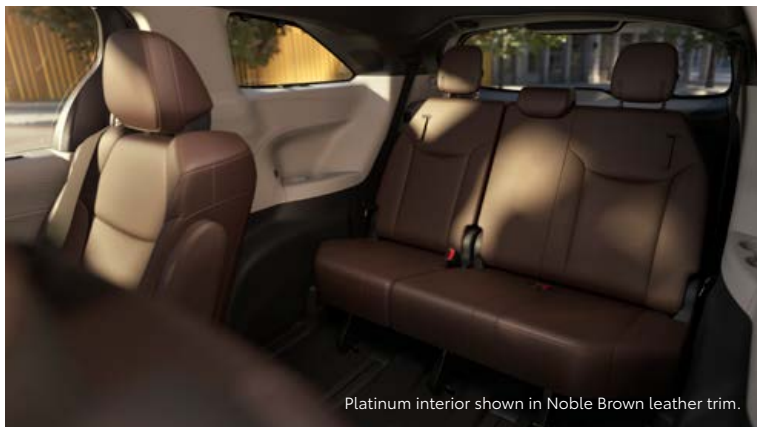
## Front and Rear Parking Assist

Up your parking game. When you're pulling in or backing out of a tight space, Sienna's available Front and Rear Parking Assist with Automated Braking (PA w/AB)<sup>15</sup> sends you audio and visual notifications, helping you park under pressure without breaking a sweat.



## Seven USB ports

Passengers can freely use their phones and tablets without worrying about their battery levels by connecting to one of the seven USB ports found across all three rows<sup>16</sup>



## Split & Stow 3rd Row<sup>®</sup> seat

Make room for more friends, more stuff, or both. Sienna's one-motion-stow Split & Stow 3rd Row<sup>®</sup> seat easily folds down so you can configure the space in the back to meet the day's needs.



# Amplify your drive.

Take advantage of smarter and convenient technologies designed to simplify your everyday life. From a suite of services that are there for you 24/7 to an immersive audio multimedia system, you can stay connected to your world.



## Connected Services

Our available suite of Connected Services provides added convenience and peace of mind.<sup>17</sup>

- ✓ **Safety Connect<sup>®</sup>**  
Emergency SOS assistance and 24/7 Toyota Roadside Assistance.<sup>18, 19</sup>
- ✓ **Service Connect**  
Get personalized maintenance updates and vehicle health reports.<sup>20</sup>
- ✓ **Remote Connect**  
Start, lock/unlock your doors and more, using your compatible smart device.<sup>21</sup>
- ✓ **Wi-Fi Connect**  
Turn your Toyota into a hotspot with 4G connectivity.<sup>22</sup>
- ✓ **Destination Assist**  
24/7 live agent assistance to locate your next destination.<sup>23</sup>

To view included trial details, please visit [toyota.com/connected-services](http://toyota.com/connected-services).

## Audio Multimedia

Make every drive more personal. By utilizing your vehicle's touchscreen display and audio multimedia capabilities, you'll always have access to what you want. Whether it's listening to your favorite playlist or finding the most scenic route to your destination, you'll enjoy the latest in connectivity and technologies that are all about you.



## Apple CarPlay<sup>®</sup>

Bring along a familiar face. With Apple CarPlay<sup>®1</sup> compatibility, you can use your compatible iPhone<sup>®24</sup> with the audio multimedia system to get directions, make calls, send and receive messages, and listen to music — all while staying focused on your commute.



## Android Auto<sup>™</sup>

Stay connected on the road. By pairing your compatible Android<sup>™25</sup> phone with the audio multimedia system, Android Auto<sup>™2</sup> lets you access your Google Assistant,<sup>64</sup> get real-time traffic alerts, make and receive phone calls, listen to your favorite soundtrack and more.



## SiriusXM<sup>®</sup> w/3-month Platinum Plan trial subscription

SiriusXM<sup>®26</sup> has premium entertainment that you won't hear anyplace else. With the Platinum Plan, you get 350+ channels, including 165+ channels in your vehicle, to enjoy ad-free music, plus sports, news, talk, comedy and more.<sup>27</sup>



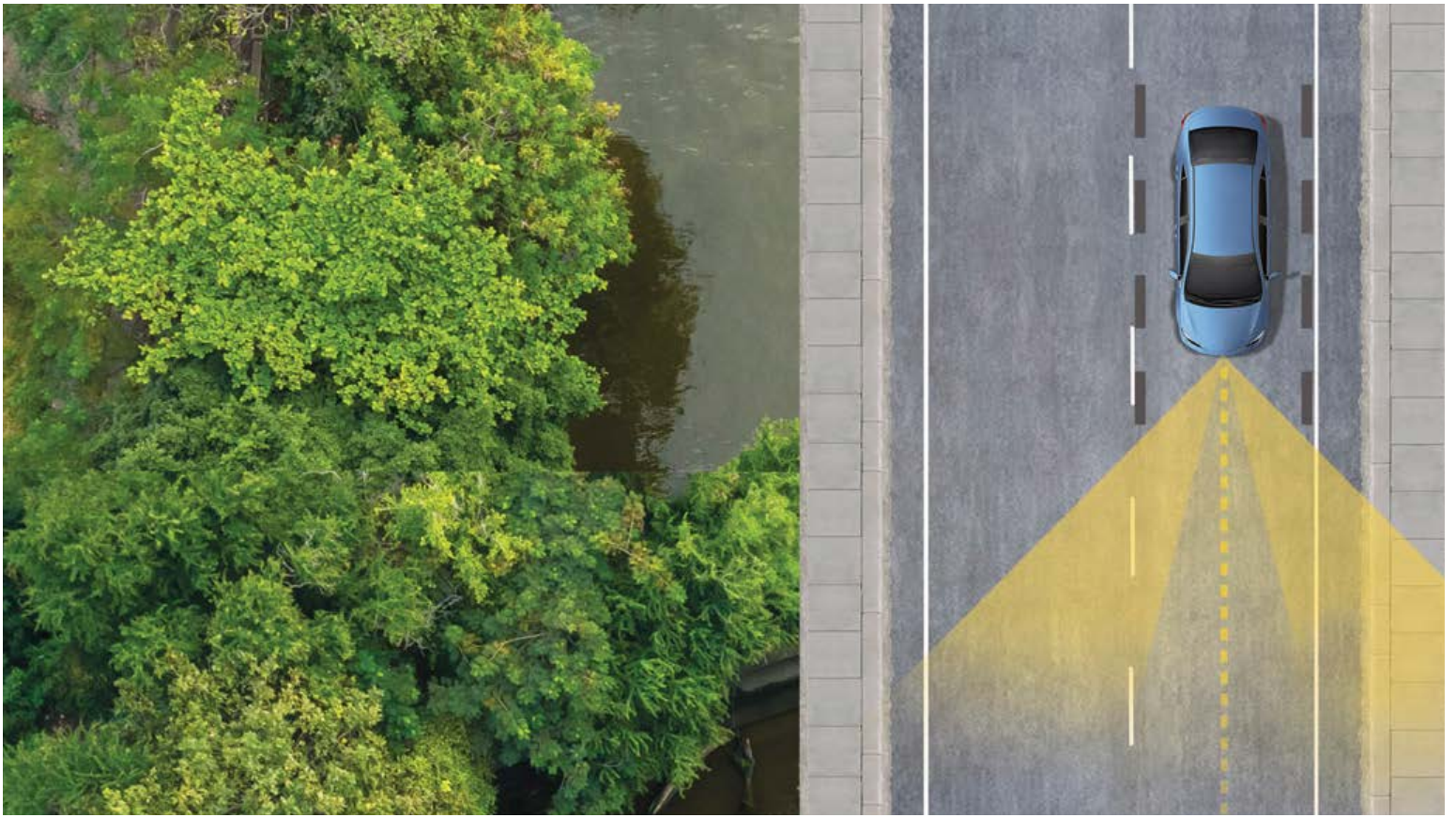
## Amazon Alexa

Almost anywhere the road takes you, Amazon Alexa<sup>28</sup> connectivity follows. With a smartphone connection and the Toyota+Alexa app, all you have to do is ask Alexa to play music, listen to audiobooks, hear the news, check weather, control smart-home devices and more.



## JBL<sup>®</sup>

Feel the difference and hear the truth. Designed specifically for Toyota, JBL<sup>®29</sup> finely tunes each speaker to the interior of the vehicle. Just turn up the volume to hear the crisp, rich, vibrant sound come through.



TOYOTA SAFETY SENSE™ 2.0 (TSS 2.0)

# Peace of mind comes standard.

Toyota Safety Sense™ 2.0 (TSS 2.0)<sup>3</sup> is a bundle of active safety features included on many new Toyota vehicles at no additional cost. These innovative features were designed to help protect you and your passengers from harm.



Pre-Collision System with Pedestrian Detection<sup>30</sup>



Full-Speed Range Dynamic Radar Cruise Control<sup>31</sup>



Lane Departure Alert with Steering Assist<sup>32</sup>



Automatic High Beams<sup>33</sup>



Lane Tracing Assist<sup>34</sup>



Road Sign Assist<sup>35</sup>

## SIENNA MODELS



### LE

Includes these key features

#### Mechanical/Performance

- ✓ Hybrid engine: 2.5L 4-cylinder with 245 net hp
- ✓ Electronically controlled Continuously Variable Transmission (ECVT) with sequential shift mode
- ✓ Normal, Eco, EV<sup>36</sup> and Sport drive modes
- ✓ Front-Wheel Drive (FWD)
- ✓ Available All-Wheel Drive (AWD)
- ✓ Up to 36 city/36 highway/36 combined EPA-est. mpg<sup>14</sup>

#### Exterior Features

- ✓ LED headlights and LED DRL with auto on/off feature
- ✓ LED taillights and stop lights
- ✓ Color-keyed heated power outside mirrors
- ✓ Dual power sliding side doors
- ✓ 17-in. alloy wheels
- ✓ Privacy glass on rear windows
- ✓ Color-keyed rear spoiler

#### Interior Features

- ✓ Seating for eight
- ✓ Three-zone automatic climate control
- ✓ Fabric-trimmed seats
  - Second-row bench with stowable center seat
  - 60/40 One-Motion-Stow Split & Stow 3rd Row<sup>®</sup> seat
- ✓ 4.2-in. Multi-Information Display (MID)
- ✓ Remote keyless entry system with Push Button Start
- ✓ Manual second-row sunshades
- ✓ Seven USB ports<sup>16</sup>
- ✓ Electric Parking Brake (EPB)<sup>37</sup> with Brake Hold<sup>38</sup> function
- ✓ Rear-seat reminder

#### Audio Multimedia

- ✓ Audio includes:
  - 9-in. touchscreen and six speakers
  - Android Auto<sup>™2</sup> & Apple CarPlay<sup>®1</sup> compatible
  - SiriusXM<sup>®26</sup> with 3-month Platinum Plan trial subscription<sup>27</sup>
- ✓ Connected Services<sup>17</sup> Safety Connect<sup>®</sup> trial<sup>18</sup>

#### Safety Features

- ✓ Toyota Safety Sense<sup>™</sup> 2.0 (TSS 2.0)<sup>3</sup>
- ✓ Star Safety System<sup>™</sup>
- ✓ Ten airbags<sup>39</sup>
- ✓ Blind Spot Monitor (BSM)<sup>40</sup> with Rear Cross-Traffic Alert (RCTA)<sup>41</sup>

#### Package

- ✓ LE Plus Package includes:
  - Auto-dimming rearview mirror
  - Wireless charging<sup>42</sup> surface
  - Power tilt/slide moonroof with sunshade
  - Black roof rails<sup>6</sup>
  - Audio Plus multimedia system



### XLE

Adds to or replaces features offered on LE

#### Mechanical/Performance

- ✓ Available All-Wheel Drive (AWD)
- ✓ Up to 36 city/36 highway/36 combined EPA-est. mpg<sup>14</sup>

#### Exterior Features

- ✓ Integrated wide-angle LED fog lights
- ✓ Hands-free dual power sliding side doors<sup>10</sup>
- ✓ Power liftgate with jam protection with available hands-free feature<sup>10</sup>
- ✓ Chrome-accented color-keyed outside door handles
- ✓ Power tilt/slide moonroof with sunshade
- ✓ Front and Rear Parking Assist with Automatic Braking (PA w/AB)<sup>15</sup>

#### Interior Features

- ✓ Seating for up to eight
- ✓ Four-zone automatic climate control
- ✓ SofTex<sup>®</sup>-trimmed<sup>8</sup> seats
  - Heated front seats
  - Second-row captain's chairs with super-long-slide feature
  - Available second-row bench with stowable center seat
  - 60/40 One-Motion-Stow Split & Stow 3rd Row<sup>®</sup> seat
- ✓ Leather-trimmed tilt/telescopic steering wheel
- ✓ Smart Key System<sup>44</sup> with Push Button Start

#### Audio Multimedia

- ✓ Audio Plus includes:
  - 9-in. touchscreen and eight speakers
  - Android Auto<sup>™2</sup> & Apple CarPlay<sup>®1</sup> compatible
  - SiriusXM<sup>®26</sup> with 3-month Platinum Plan trial subscription<sup>27</sup>
- ✓ Connected Services<sup>17</sup> Safety Connect<sup>®</sup> trial<sup>18</sup>

#### Safety Features

- ✓ Toyota Safety Sense<sup>™</sup> 2.0 (TSS 2.0)<sup>3</sup>
- ✓ Star Safety System<sup>™</sup>
- ✓ Ten airbags<sup>39</sup>
- ✓ Blind Spot Monitor (BSM)<sup>40</sup> with Rear Cross-Traffic Alert (RCTA)<sup>41</sup>

#### Packages/Options

- ✓ XLE Plus Package includes:
  - Wireless charging<sup>42</sup> surface
  - Black roof rails<sup>6</sup>
  - Premium Audio, Dynamic Navigation<sup>45</sup> with 3-year trial<sup>46</sup>
  - 12 JBL<sup>®29</sup> speakers including subwoofer and amplifier
- ✓ 1500W power outlet<sup>11</sup> (requires XLE Plus Package)
- ✓ Entertainment Package (requires XLE Plus Package)
- ✓ 18-in. bright wheels



### Woodland Edition

Adds to or replaces features offered on XLE

#### Mechanical/Performance

- ✓ Increased ground clearance
- ✓ All-Wheel Drive (AWD)
- ✓ 35 city/36 highway/35 combined EPA-est. mpg<sup>14</sup>

#### Exterior Features

- ✓ Available in Cement or Midnight Black Metallic
- ✓ Black lower grille garnish
- ✓ Dark chrome upper grille garnish
- ✓ Towing hitch receiver<sup>7</sup>
- ✓ 18-in. bright wheels
- ✓ Black roof rails with cross bars<sup>6</sup>
- ✓ Black Sienna liftgate logo
- ✓ Black Toyota emblem and grade badge

#### Interior Features

- ✓ Seating for seven
- ✓ Wireless charging<sup>42</sup> surface
- ✓ 1500W power outlet<sup>11</sup>
- ✓ All-weather floor mats<sup>47</sup>
- ✓ Driver Easy Speak
- ✓ SofTex<sup>®8</sup> sport-trimmed seats
  - Heated front seats
  - Second-row captain's chairs with super-long-slide feature
  - 60/40 One-Motion-Stow Split & Stow 3rd Row<sup>®</sup> seat

#### Audio Multimedia

- ✓ Premium Audio includes:
  - 9-in. touchscreen and 12 JBL<sup>®29</sup> speakers including subwoofer and amplifier
  - Dynamic Navigation<sup>45</sup> with 3-year trial<sup>46</sup>
  - Android Auto<sup>™2</sup> & Apple CarPlay<sup>®1</sup> compatible
  - SiriusXM<sup>®26</sup> with 3-month Platinum Plan trial subscription<sup>27</sup>
- ✓ Connected Services<sup>17</sup> Safety Connect<sup>®</sup> trial<sup>18</sup>

#### Safety Features

- ✓ Toyota Safety Sense<sup>™</sup> 2.0 (TSS 2.0)<sup>3</sup>
- ✓ Star Safety System<sup>™</sup>
- ✓ Ten airbags<sup>39</sup>

- ✓ Blind Spot Monitor (BSM)<sup>40</sup> with Rear Cross-Traffic Alert (RCTA)<sup>41</sup>

#### Option

- ✓ Entertainment Package

## SIENNA MODELS



### XSE

Adds to or replaces features offered on XLE

#### Mechanical/Performance

- ✓ Sport-tuned suspension
- ✓ Available All-Wheel Drive (AWD)
- ✓ Up to 36 city/36 highway/36 combined EPA-est. mpg<sup>14</sup>

#### Exterior Features

- ✓ LED headlights and LED-strip DRL with auto on/off feature
- ✓ Black side rocker panels
- ✓ Metallic black sport mesh front grille
- ✓ Black heated power outside mirrors
- ✓ 20-in. dark wheels
- ✓ Rear lower bumper in black sport mesh
- ✓ Black Sienna liftgate logo
- ✓ Black roof-mounted shark-fin antenna

#### Interior Features

- ✓ Seating for seven
- ✓ Driver Easy Speak
- ✓ SofTex<sup>®</sup> sport-trimmed seats
  - Heated front seats
  - Second-row captain's chairs with super-long-slide feature
  - 60/40 One-Motion-Stow Split & Stow 3rd Row<sup>®</sup> seat

#### Audio Multimedia

- ✓ Premium Audio includes:
  - 9-in. touchscreen and eight speakers
  - Dynamic Navigation<sup>45</sup> with 3-year trial<sup>46</sup>
  - Android Auto<sup>TM2</sup> & Apple CarPlay<sup>®1</sup> compatible
  - SiriusXM<sup>®26</sup> with 3-month Platinum Plan trial subscription<sup>27</sup>
- ✓ Connected Services<sup>17</sup> Safety Connect<sup>®</sup> trial<sup>18</sup>

#### Safety Features

- ✓ Toyota Safety Sense<sup>TM</sup> 2.0 (TSS 2.0)<sup>3</sup>
- ✓ Star Safety System<sup>TM</sup>
- ✓ Ten airbags<sup>39</sup>
- ✓ Blind Spot Monitor (BSM)<sup>40</sup> with Rear Cross-Traffic Alert (RCTA)<sup>41</sup>

#### Packages/Options

- ✓ XSE Plus Package includes:
  - Wireless charging<sup>42</sup> surface
  - Black roof rails<sup>6</sup>
  - Premium Audio with 12 JBL<sup>®29</sup> speakers including subwoofer and amplifier
- ✓ 1500W power outlet<sup>11</sup> (requires XLE Plus Package)
- ✓ Entertainment Package (requires XLE Plus Package)



### Limited

Adds to or replaces features offered on XLE

#### Mechanical/Performance

- ✓ Available All-Wheel Drive (AWD)
- ✓ Up to 36 city/36 highway/36 combined EPA-est. mpg<sup>14</sup>

#### Exterior Features

- ✓ LED headlights and LED-strip DRL with auto on/off feature
- ✓ Black side rocker panels
- ✓ Dark gray metallic front grille
- ✓ 18-in. bright wheels
- ✓ Chrome roof rails
- ✓ Rear lower bumper in black with chrome accent
- ✓ Chrome-accented Sienna liftgate logo
- ✓ Color-keyed roof-mounted shark-fin antenna

#### Interior Features

- ✓ Seating for seven
- ✓ Driver Easy Speak
- ✓ Wireless charging<sup>42</sup> surface
- ✓ Leather-trimmed seats
  - Heated front seats
  - Second-row captain's chairs with super-long-slide feature and ottoman<sup>9</sup>
  - SofTex<sup>®</sup>-trimmed<sup>8</sup> 60/40 One-Motion-Stow Split & Stow 3rd Row<sup>®</sup> seat
- ✓ Leather-trimmed power tilt/telescopic steering wheel
- ✓ 7-in. Multi-Information Display (MID)
- ✓ Manual second- and third-row sunshades

#### Audio Multimedia

- ✓ Premium Audio includes:
  - 9-in. touchscreen and 12 JBL<sup>®29</sup> speakers including subwoofer and amplifier
  - Dynamic Navigation<sup>45</sup> with 3-year trial<sup>46</sup>
  - Android Auto<sup>TM2</sup> & Apple CarPlay<sup>®1</sup> compatible
  - SiriusXM<sup>®26</sup> with 3-month Platinum Plan trial subscription<sup>27</sup>
- ✓ Connected Services<sup>17</sup> Safety Connect<sup>®</sup> trial<sup>18</sup>

#### Safety Features

- ✓ Toyota Safety Sense<sup>TM</sup> 2.0 (TSS 2.0)<sup>3</sup>
- ✓ Star Safety System<sup>TM</sup>
- ✓ Ten airbags<sup>39</sup>
- ✓ Blind Spot Monitor (BSM)<sup>40</sup> with Rear Cross-Traffic Alert (RCTA)<sup>41</sup>

#### Packages/Options

- ✓ Digital rearview mirror with HomeLink<sup>®48</sup> universal transceiver
- ✓ 1500W power outlet<sup>11</sup>
- ✓ Entertainment Package



### Platinum

Adds to or replaces features offered on Limited

#### Mechanical/Performance

- ✓ Available All-Wheel Drive (AWD)
- ✓ Up to 36 city/36 highway/36 combined EPA-est. mpg<sup>14</sup>

#### Exterior Features

- ✓ Signature Bi-LED projector headlights and LED-strip DRL with auto on/off feature
- ✓ Bird's Eye View Camera<sup>49</sup>
- ✓ 20-in. metallic wheels
- ✓ Rain-sensing variable windshield wipers

#### Interior Features

- ✓ Seating for seven
- ✓ Leather-trimmed seats
  - Heated and ventilated front seats
  - Heated second-row captain's chairs with super-long-slide feature and ottoman<sup>9</sup>
  - SofTex<sup>®</sup>-trimmed<sup>8</sup> 60/40 One-Motion-Stow Split & Stow 3rd Row<sup>®</sup> seat
- ✓ Leather-trimmed heated power tilt/telescopic steering wheel
- ✓ 10-in. color Head-Up Display (HUD)

#### Audio Multimedia

- ✓ Premium Audio includes:
  - 9-in. touchscreen and 12 JBL<sup>®29</sup> speakers including subwoofer and amplifier
  - Dynamic Navigation<sup>45</sup> with 3-year trial<sup>46</sup>
  - Android Auto<sup>TM2</sup> & Apple CarPlay<sup>®1</sup> compatible
  - SiriusXM<sup>®26</sup> with 3-month Platinum Plan trial subscription<sup>27</sup>
- ✓ Connected Services<sup>17</sup> Safety Connect<sup>®</sup> trial<sup>18</sup>

#### Safety Features

- ✓ Toyota Safety Sense<sup>TM</sup> 2.0 (TSS 2.0)<sup>3</sup>
- ✓ Star Safety System<sup>TM</sup>
- ✓ Ten airbags<sup>39</sup>
- ✓ Blind Spot Monitor (BSM)<sup>40</sup> with Rear Cross-Traffic Alert (RCTA)<sup>41</sup>

#### Packages/Options

- ✓ Digital rearview mirror with HomeLink<sup>®48</sup> universal transceiver
- ✓ 1500W power outlet<sup>11</sup>
- ✓ Entertainment Package

SIENNA COLORS & TRIMS



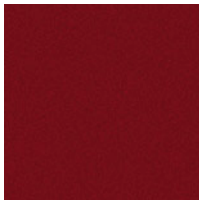
Midnight Black Metallic



Blueprint



Cypress



Ruby Flare Pearl<sup>5</sup>



Sunset Bronze Mica



Predawn Gray Mica



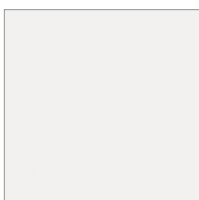
Cement



Celestial Silver Metallic

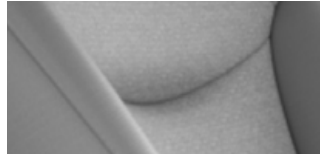


Blizzard Pearl<sup>5</sup>

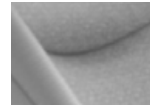


Super White

LE fabric shown in Gray



XLE SofTex<sup>®</sup> trim shown in Chateau



Graphite

Woodland Edition SofTex<sup>®</sup> trim shown in Gray Flannel with Black



XSE SofTex<sup>®</sup> trim shown in Moonstone with Gray Flannel



Gray Flannel with Black

Limited perforated leather trim shown in Chateau



Platinum perforated leather trim shown in Noble Brown



Graphite

SIENNA WHEELS



LE and XLE  
17-in. alloy wheels



XSE FWD  
20-in. dark wheels



XSE AWD and Platinum AWD  
18-in. metallic wheels



XLE, Woodland Edition and  
Limited 18-in. bright wheels



Platinum FWD  
20-in. metallic wheels

SIENNA ACCESSORIES

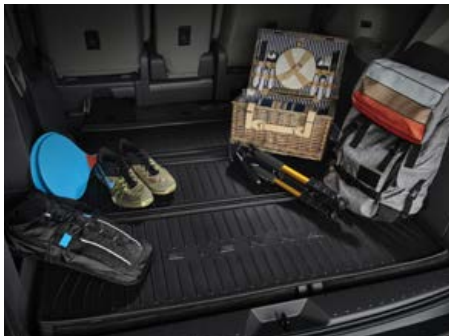
This is a great way to add extra personality to your Sienna. Not every accessory is available in your area, so for a complete list of accessories, go to [toyota.com/sienna/accessories](http://toyota.com/sienna/accessories).



All-weather floor liner<sup>47</sup>



Body side moldings



Cargo liner<sup>50</sup>



Cargo organizer<sup>50</sup>



Cargo tray<sup>50</sup>



Cross bars<sup>6</sup>



Illuminated doorsills



Tow hitch<sup>7</sup>



Dashcam<sup>51</sup>

WARRANTIES

Every Toyota Car, Truck and SUV is built to exceptional standards. And that's not idle boasting. We back it up with these Limited Warranty Coverages:

**Basic:** 36 months/36,000 miles (all components other than normal wear and maintenance items).

**Hybrid-Related Component Coverage:** Hybrid-related components, including the battery control module, hybrid control module and inverter with converter, are covered for 8 years/100,000 miles. Refer to applicable *Warranty and Maintenance Guide* for details.

**Hybrid Battery:** HV battery is covered for 10 years or 150,000 miles, whichever comes first. Warranty coverage is subject to terms and conditions. Refer to applicable *Warranty and Maintenance Guide* for details.

**Powertrain:** 60 months/60,000 miles (engine, transmission/transaxle, drive system, seatbelts and airbags).

**Rust-Through:** 60 months/unlimited miles (corrosion perforation of sheet metal).

**Emissions:** Coverages vary under Federal and California regulations. Refer to applicable *Warranty and Maintenance Guide* for details.

**Accessories:** For Genuine Toyota Accessories purchased at the time of the new vehicle purchase, the Toyota Accessory Warranty coverage is in effect for 36 months/36,000 miles from the vehicle's in-service date, which is the same coverage as the Toyota New Vehicle Limited Warranty.

For Genuine Toyota Accessories purchased after the new vehicle purchase the coverage is 12 months, regardless of mileage, from the date the accessory was installed on the vehicle, or the remainder of any applicable new vehicle warranty, whichever provides greater coverage.

You may be eligible for transportation assistance if it's necessary that your vehicle be kept overnight for repairs covered under warranty. Please see your authorized Toyota dealership for further details.

For complete details about Toyota's warranties, please visit [www.toyota.com](http://www.toyota.com), refer to the applicable *Warranty and Maintenance Guide* or see your Toyota dealer.

SIENNA FEATURES<sup>52</sup>

S = Standard O = Optional A = Available P = Available as part of a package

Exterior	LE	XLE	Woodland Edition	XSE	Limited	Platinum
LED headlights and LED Daytime Running Lights (DRL) with auto on/off feature	S	S	S			
LED headlights and LED-strip DRL with auto on/off feature				S	S	
Signature Bi-LED projector headlights and LED-strip Daytime Running Lights (DRL) with auto on/off feature						S
Integrated wide-angle LED fog lights		S	S	S	S	S
LED taillights and stop lights	S	S	S			
Premium LED taillights and stop lights				S	S	S
Black side rocker panels				S	S	S
Black grille	S	S	S			
Dark gray metallic grille					S	S
Metallic black sport mesh front grille				S		
Color-keyed heated power outside mirrors with blind spot warning indicators <sup>40</sup>	S	S	S			
Black heated power outside mirrors with blind spot warning indicators <sup>40</sup>				S		
Color-keyed heated power auto-dimming outside mirrors with blind spot warning indicators, <sup>40</sup> puddle lights and power-folding, reverse tilt-down and memory features					S	
Color-keyed heated power auto-dimming outside mirrors with blind spot warning indicators, <sup>40</sup> puddle lights and power-folding, reverse tilt-down, memory and Bird's Eye View Camera <sup>49</sup> features						S
Dual power sliding side doors	S					
Hands-free dual power sliding side doors <sup>10</sup>		S	S	S	S	S
Power liftgate with jam protection		S	S	S	S	S
Hands-free power liftgate with jam protection <sup>10</sup>		A		A	A	A
Color-keyed outside door handles	S					
Chrome-accented color-keyed outside door handles		S	S	S	S	S
Power tilt/slide moonroof with sunshade	P	S	S	S	S	S
17-in. alloy wheels with P235/65R17 tires	S	S				
18-in. metallic wheels with P235/60R18 tires				S (AWD)		S (AWD)
18-in. bright wheels with P235/60R18 tires		O	S		S	
20-in. dark wheels with P235/50R20 tires				S (FWD)		
20-in. metallic wheels with P235/50R20 tires						S (FWD)
Variable windshield wipers	S	S	S	S	S	
Rain-sensing variable windshield wipers						S
Intermittent rear wiper	S	S	S	S	S	S
Black roof rail cross bars <sup>5</sup>			S			
Black roof rails <sup>6</sup>	P	P	S	P		
Chrome roof rails <sup>5</sup>					S	S
Rear lower bumper in black	S	S	S			
Rear lower bumper in black sport mesh				S		
Rear lower bumper in black with chrome accent					S	S
Color-keyed rear spoiler with LED center high-mount stop light and integrated concealed intermittent rear wiper	S	S	S	S	S	S
Black Toyota emblem and grade badge			S			
Black Sienna logo liftgate license garnish	S	S	S	S		
Chrome-accented Sienna logo liftgate license garnish					S	S
Chrome Toyota emblem and grade badge	S	S		S	S	S
Chrome AWD badge	S (AWD)	S (AWD)		S (AWD)	S (AWD)	S (AWD)
Black AWD badge			S			
Black roof-mounted shark-fin antenna	S	S	S	S		
Color-keyed roof-mounted shark-fin antenna					S	S
Towing hitch receiver and wiring harness with 4-pin connector			S			

Interior

Three-zone automatic climate control with air filter, individual temperature settings for driver, front passenger and rear-seat passengers, and separate rear digital control panel	S					
Four-zone automatic climate control with air filter, individual temperature settings for driver, front passenger and rear-seat passengers, and separate rear digital control panel		S	S	S	S	S
Integrated backup camera <sup>53</sup>	S	S	S	S	S	S
Bird's Eye View Camera with Perimeter Scan, overhead 360-degree view <sup>49</sup>						S
Driver Easy Speak		P	S	S	S	S
1080p HD Entertainment Center with 11.6-in. display, HDMI inputs, remote and two wireless headphones <sup>54</sup>		P	P	P	P	P
Qi-compatible wireless smartphone charging <sup>42</sup>	P	P	S	P	S	S

See numbered footnotes in Disclosures section.



SIENNA FEATURES

S = Standard O = Optional A = Available P = Available as part of a package

Interior (continued)	LE	XLE	Woodland Edition	XSE	Limited	Platinum
1500W inverter (with two 120V AC outlets) <sup>11</sup>		P	S	P	O	O
Fabric-trimmed front seats with seatback pockets; 8-way power-adjustable driver's seat	S					
SofTex <sup>®</sup> -trimmed <sup>8</sup> heated front seats with seatback pockets; 8-way power-adjustable driver's seat with power lumbar; 4-way power-adjustable front passenger seat		S				
SofTex <sup>®</sup> sport-trimmed heated front seats with seatback pockets; 8-way power-adjustable driver's seat with power lumbar; 4-way power-adjustable front passenger seat			S	S		
Leather-trimmed heated and ventilated front seats with seatback pockets; 8-way power-adjustable driver's seat with power lumbar and driver memory function; 4-way power-adjustable front passenger seat					S	S
8-passenger seating with fabric-trimmed second-row bench with stowable center seat	S					
8-passenger seating with SofTex <sup>®</sup> -trimmed <sup>8</sup> second-row bench with stowable center seat		S (FWD)				
7-passenger seating with SofTex <sup>®</sup> -trimmed <sup>8</sup> second-row captain's chairs with super-long-slide feature		S (FWD/AWD)				
7-passenger seating with SofTex <sup>®</sup> sport-trimmed second-row captain's chairs with super-long-slide feature			S	S		
7-passenger seating with premium leather-trimmed second-row-seat captain's chairs with super-long-slide feature and ottoman <sup>9</sup>					S	
7-passenger seating with heated premium leather-trimmed second-row-seat captain's chairs with super-long-slide feature and ottoman <sup>9</sup>						S
Fabric-trimmed 60/40 One-Motion-Stow Split & Stow 3rd Row <sup>®</sup> seat	S					
SofTex <sup>®</sup> -trimmed <sup>8</sup> 60/40 One-Motion-Stow Split & Stow 3rd Row <sup>®</sup> seat		S			S	S
SofTex <sup>®</sup> sport-trimmed 60/40 One-Motion-Stow Split & Stow 3rd Row <sup>®</sup> seat			S	S		
Tilt/telescopic steering wheel with audio, Multi-Information Display (MID), Bluetooth <sup>®</sup> <sup>55</sup> hands-free phone and voice-command, Full-Speed Range Dynamic Radar Cruise Control (DRCC) <sup>31</sup> Lane Departure Alert (LDA) <sup>32</sup> and Lane Tracing Assist (LTA) <sup>34</sup> controls	S					
Leather-trimmed tilt/telescopic steering wheel with audio, Multi-Information Display (MID), Bluetooth <sup>®</sup> <sup>55</sup> hands-free phone and voice-command, Full-Speed Range Dynamic Radar Cruise Control (DRCC) <sup>31</sup> Lane Departure Alert (LDA) <sup>32</sup> and Lane Tracing Assist (LTA) <sup>34</sup> controls		S	S	S		
Leather-trimmed tilt/telescopic steering wheel with memory and with audio, Multi-Information Display (MID), Bluetooth <sup>®</sup> <sup>55</sup> hands-free phone and voice-command, Full-Speed Range Dynamic Radar Cruise Control (DRCC) <sup>31</sup> Lane Departure Alert (LDA) <sup>32</sup> and Lane Tracing Assist (LTA) <sup>34</sup> controls					S	
Leather-trimmed, heated, tilt/telescopic steering wheel with memory and with audio, Multi-Information Display (MID), Bluetooth <sup>®</sup> <sup>55</sup> hands-free phone and voice-command, Full-Speed Range Dynamic Radar Cruise Control (DRCC) <sup>31</sup> Lane Departure Alert (LDA) <sup>32</sup> and Lane Tracing Assist (LTA) <sup>34</sup> controls						S
4.2-in. color TFT Multi-Information Display (MID) with odometer, fuel economy, trip information and warning messages	S	S	S	S		
7-in. Multi-Information Display (MID) with odometer, fuel economy, trip information and warning messages					S	S
Remote keyless entry system with lock, unlock, panic and Push Button Start	S					
Smart Key System <sup>44</sup> on five doors with Push Button Start and remote illuminated entry		S	S	S	S	S
Power windows with one-touch auto up/down, jam protection in all positions	S	S	S	S	S	S
Rear window defogger with timer	S	S	S	S	S	S
Power door locks with shift-activated locking feature and anti-lockout feature	S	S	S	S	S	S
Manual second-row sunshades	S	S	S	S		
Manual second- and third-row sunshades					S	S
Non-glare rearview mirror	S					
Auto-dimming rearview mirror and HomeLink <sup>®</sup> <sup>48</sup> universal transceiver	P	S	S	S	S	S
Digital rearview mirror with HomeLink <sup>®</sup> <sup>48</sup> universal transceiver					O	O
10-in. color Head-Up Display (HUD) with speedometer, navigation and Hybrid System Indicator						S
Overhead console with maplights and dome lights, side door controls and Safety Connect <sup>®</sup> <sup>18</sup>	S					
Overhead console with maplights and dome lights, side door and liftgate controls, conversation mirror, sunglasses storage and Safety Connect <sup>®</sup> <sup>18</sup>		S	S	S	S	S
Fixed center console with wood-grain-style accents, pass-through, illuminated storage compartment and four illuminated cup holders	S	S	S		S	S
Fixed center console with satin-grain-style accents, pass-through, illuminated storage compartment and four illuminated cup holders				S		
Lockable glove compartment	S	S	S	S	S	S
One 12V <sup>56</sup> DC outlet (under bridge console)	S	S	S	S	S	S
One USB port and six USB charge ports <sup>16</sup>	S	S	S	S	S	S
Retractable assist grips at all outboard seating positions	S	S	S	S	S	S
Dual sun visors with illuminated vanity mirrors	S	S	S	S	S	S
Up to 18 cup and bottle holders	S	S	S	S	S	S
Front- and rear-door map pockets with bottle holders	S	S	S	S	S	S
Electric Parking Brake (EPB) <sup>37</sup> with Brake Hold <sup>38</sup> function	S	S	S	S	S	S

See numbered footnotes in Disclosures section.

SIENNA FEATURES

S = Standard O = Optional A = Available P = Available as part of a package

Audio Multimedia

	LE	XLE	Woodland Edition	XSE	Limited	Platinum
Audio — 9-in. touchscreen, six speakers, Android Auto™ <sup>2</sup> & Apple CarPlay® <sup>1</sup> & Amazon Alexa <sup>28</sup> compatible, seven USB ports, <sup>16</sup> hands-free phone capability and music streaming <sup>55</sup> via Bluetooth® <sup>55</sup> wireless technology, SiriusXM® <sup>26</sup> with 3-month Platinum Plan trial subscription. <sup>27</sup> See <a href="http://toyota.com/audio-multimedia">toyota.com/audio-multimedia</a> for details. Connected Services <sup>17</sup> — Safety Connect® with 1-year trial, <sup>18</sup> Wi-Fi Connect with up to 2 GB within 3-month trial. <sup>22</sup> See <a href="http://toyota.com/connected-services">toyota.com/connected-services</a> for details.	S					
Audio Plus — 9-in. touchscreen, eight speakers, Android Auto™ <sup>2</sup> & Apple CarPlay® <sup>1</sup> & Amazon Alexa <sup>28</sup> compatible, seven USB ports, <sup>16</sup> hands-free phone capability and music streaming <sup>55</sup> via Bluetooth® <sup>55</sup> wireless technology, SiriusXM® <sup>26</sup> with 3-month Platinum Plan trial subscription. <sup>27</sup> See <a href="http://toyota.com/audio-multimedia">toyota.com/audio-multimedia</a> for details. Connected Services <sup>17</sup> — Safety Connect® with 1-year trial, <sup>18</sup> Service Connect with 10-year trial, <sup>20</sup> Remote Connect with 1-year trial, <sup>21</sup> Wi-Fi Connect with up to 2 GB within 3-month trial. <sup>22</sup> See <a href="http://toyota.com/connected-services">toyota.com/connected-services</a> for details.	P	S				
Premium Audio and Dynamic Navigation <sup>45</sup> with 3-year trial <sup>46</sup> — 9-in. touchscreen, eight speakers, Android Auto™ <sup>2</sup> & Apple CarPlay® <sup>1</sup> & Amazon Alexa <sup>28</sup> compatible, seven USB ports, <sup>16</sup> hands-free phone capability and music streaming <sup>55</sup> via Bluetooth® <sup>55</sup> wireless technology, SiriusXM® <sup>26</sup> with 3-month Platinum Plan trial subscription. <sup>27</sup> See <a href="http://toyota.com/audio-multimedia">toyota.com/audio-multimedia</a> for details. Connected Services <sup>17</sup> — Safety Connect® with 1-year trial, <sup>18</sup> Remote Connect with 1-year trial, <sup>21</sup> Service Connect with 10-year trial, <sup>20</sup> Wi-Fi Connect with up to 2 GB within 3-month trial. <sup>22</sup> See <a href="http://toyota.com/connected-services">toyota.com/connected-services</a> for details.				S		
Premium Audio and Dynamic Navigation <sup>45</sup> with 3-year trial <sup>46</sup> — 9-in. touchscreen, 12 JBL® <sup>29</sup> speakers, including subwoofer and amplifier, Android Auto™ <sup>2</sup> & Apple CarPlay® <sup>1</sup> & Amazon Alexa <sup>28</sup> compatible, seven USB ports, <sup>16</sup> hands-free phone capability and music streaming <sup>55</sup> via Bluetooth® <sup>55</sup> wireless technology, SiriusXM® <sup>26</sup> with 3-month Platinum Plan trial subscription. <sup>27</sup> See <a href="http://toyota.com/audio-multimedia">toyota.com/audio-multimedia</a> for details. Connected Services <sup>17</sup> — Safety Connect® with 1-year trial, <sup>18</sup> Service Connect with 10-year trial, <sup>20</sup> Remote Connect with 1-year trial, <sup>21</sup> Wi-Fi Connect with up to 2 GB within 3-month trial, <sup>22</sup> Destination Assist with 1-year trial. <sup>23</sup> See <a href="http://toyota.com/connected-services">toyota.com/connected-services</a> for details.		P	S	P	S	S

Safety and Convenience

 Star Safety System™ — includes Enhanced Vehicle Stability Control (VSC) <sup>57</sup> Traction Control (TRAC), Anti-lock Brake System (ABS), Electronic Brake-force Distribution (EBD), Brake Assist (BA) <sup>58</sup> and Smart Stop Technology® (SST) <sup>59</sup>	S	S	S	S	S	S
Toyota Safety Sense™ 2.0 (TSS 2.0) <sup>3</sup> — Pre-Collision System with Pedestrian Detection (PCS w/PD), <sup>30</sup> Full-Speed Range Dynamic Radar Cruise Control (DRCC), <sup>31</sup> Lane Departure Alert with Steering Assist (LDA w/SA), <sup>32</sup> Automatic High Beams (AHB), <sup>33</sup> Lane Tracing Assist (LTA) <sup>34</sup> and Road Sign Assist (RSA) <sup>35</sup>	S	S	S	S	S	S
Ten airbags <sup>39</sup> — includes driver and front passenger Advanced Airbag System, driver, front passenger and second-row outboard seat-mounted side airbags, driver knee airbag, front passenger seat-cushion airbag, side curtain airbags	S	S	S	S	S	S
3-point seatbelts for all seating positions; driver-side Emergency Locking Retractor (ELR) and Automatic/Emergency Locking Retractors (ALR/ELR) on all passenger seatbelts	S	S	S	S	S	S
Adjustable seatbelt anchors on front and outboard second-row seats and driver and front passenger seatbelt pretensioners with force limiters	S	S	S	S	S	S
Four LATCH (Lower Anchors and Tethers for Children) locations: includes lower anchors on outboard second-row seats, and passenger-side and center third-row seats		S	S	S	S	S
Five LATCH (Lower Anchors and Tethers for Children) locations: includes lower anchors on all three second-row seats, and passenger-side and center third-row seats	S					
Child-protector rear door locks	S	S	S	S	S	S
Tire Pressure Monitor System (TPMS) <sup>60</sup> with direct pressure readout and individual tire location alert	S	S	S	S	S	S
Safety Connect® <sup>18</sup> — includes Emergency Assistance, Stolen Vehicle Locator, <sup>61</sup> Roadside Assistance <sup>19</sup> and Automatic Collision Notification. Available by subscription. Complimentary one-year trial subscription. <sup>18</sup> (Includes roof-mounted shark-fin antenna)	S	S	S	S	S	S
Front and Rear Parking Assist Sonar with Automatic Braking (PA w/AB) <sup>15</sup>		S	S	S	S	S
Blind Spot Monitor (BSM) <sup>40</sup> with Rear Cross-Traffic Alert (RCTA) <sup>41</sup> with Rear Cross-Traffic Braking (RCTB)	S	S	S	S	S	S
Hill Start Assist Control (HAC) <sup>62</sup>	S	S	S	S	S	S
Anti-theft system with alarm and engine immobilizer <sup>63</sup>	S	S	S	S	S	S
Tire repair kit	S	S	S	S	S	S

SIENNA PACKAGES

S = Standard O = Optional A = Available P = Available as part of a package

Packages and Options

	LE	XLE	Woodland Edition	XSE	Limited	Platinum
<b>LE Plus Package:</b> includes auto-dimming rearview mirror and HomeLink®48 universal transceiver, Qi-compatible wireless smartphone charging,22 power tilt/slide moonroof with sunshade, black roof rails6 and Audio Plus — includes 9-in. touchscreen, eight speakers, seven USB ports,16 hands-free phone capability and music streaming55 via Bluetooth®55 wireless technology, Android Auto™2 & Apple CarPlay®1 & Amazon Alexa28 compatible, SiriusXM®26 with 3-month Platinum Plan trial subscription.27 See toyota.com/audio-multimedia for details. Connected Services17 — Safety Connect® with 1-year trial,18 Service Connect with 10-year trial,20 Remote Connect with 1-year trial,21 Wi-Fi Connect with up to 2 GB within 3-month trial.22 See toyota.com/connected-services for details.	P					
<b>XLE Plus Package:</b> includes Qi-compatible wireless smartphone charging,42 black roof rails6 and Premium Audio, Dynamic Navigation45 trial46 and JBL® w/Clari-Fi®43 — includes 9-in. touchscreen, 12 JBL®29 speakers including subwoofer and amplifier, seven USB ports,16 hands-free phone capability and music streaming55 via Bluetooth®55 wireless technology, Android Auto™2 & Apple CarPlay®1 & Amazon Alexa28 compatible, SiriusXM®26 with 3-month Platinum Plan trial subscription.27 See toyota.com/audio-multimedia for details. Connected Services17 — Safety Connect® with 1-year trial,18 Service Connect with 10-year trial,20 Remote Connect with 1-year trial,21 Wi-Fi Connect with up to 2 GB within 3-month trial.22 Destination Assist with 1-year trial.23 See toyota.com/connected-services for details.		P				
<b>XSE Plus Package:</b> includes Qi-compatible wireless smartphone charging,42 black roof rails6 and Premium Audio, Dynamic Navigation45 trial46 and JBL® w/Clari-Fi®43 — includes 9-in. touchscreen, 12 speakers including subwoofer and amplifier, seven USB ports,16 hands-free phone capability and music streaming55 via Bluetooth®55 wireless technology, Android Auto™2 & Apple CarPlay®1 & Amazon Alexa28 compatible, SiriusXM®26 with 3-month Platinum Plan trial subscription.27 See toyota.com/audio-multimedia for details. Connected Services17 — Safety Connect® with 1-year trial,18 Service Connect with 10-year trial,20 Remote Connect with 1-year trial,21 Wi-Fi Connect with up to 2 GB within 3-month trial.22 Destination Assist with 1-year trial.23 See toyota.com/connected-services for details.				P		
<b>Entertainment Package:</b> includes 1080p HD Entertainment Center with 11.6-in. display, HDMI input, remote and two wireless headphones54		P*	P	P*	P	P
Digital rearview mirror with HomeLink®48 universal transceiver				O	O	
1500W inverter (with two 120V AC outlets)11		O*	S	O*	O	O
Spare tire	O	O	O	O	O	O
Roof rails6	O	O	S	O	S	S

\*Requires Plus Package

SIENNA SPECIFICATIONS

Mechanical/Performance

ENGINE

Hybrid — 2.5-Liter with Double Overhead Cam (DOHC), 16-Valve, D-4S Injection and Dual VVT-i	S	S	S	S	S	S
245 net hybrid system hp	S	S	S	S	S	S

EMISSION RATING

Super Ultra Low Emission Vehicle (SULEV)	S	S	S	S	S	S
--	---	---	---	---	---	---

ELECTRIC MOTORS

Permanent magnet synchronous motors (two front)	S (FWD)	S (FWD)		S (FWD)	S (FWD)	S (FWD)
Permanent magnet synchronous motors (two front, one rear)	S (AWD)	S (AWD)	S (AWD)	S (AWD)	S (AWD)	S (AWD)

TRACTION BATTERY

Battery type: sealed Nickel-Metal Hydride (Ni-MH)	S	S	S	S	S	S
---	---	---	---	---	---	---

TRANSMISSION

Electronically controlled Continuously Variable Transmission (ECVT) with sequential shift mode	S	S	S	S	S	S
--	---	---	---	---	---	---

DRIVETRAIN

Front-Wheel Drive (FWD)	S	S		S	S	S
Electronic On-Demand All-Wheel Drive (AWD) system	A	A	S	A	A	A

DRIVE MODES

Normal, Eco, EV,36 Sport	S	S	S	S	S	S
--------------------------	---	---	---	---	---	---

SUSPENSION

Increased ground clearance			S			
Sport-tuned suspension				S		

STEERING

Electric Power Steering (EPS)	S	S	S		S	S
Sport-tuned Electric Power Steering (EPS)				S		
Turning circle diameter, curb to curb (ft.)	38.30 ft.	38.30 ft.	38.30 ft.	39.20 ft.	38.30 ft.	39.20 ft.

BRAKES

Ventilated 12.9-in. front disc brakes	S	S	S	S	S	S
Ventilated 12.5-in. rear disc brakes	S	S	S	S	S	S

See numbered footnotes in Disclosures section.

# SIENNA SPECIFICATIONS

S = Standard O = Optional A = Available P = Available as part of a package

## Dimensions

	LE	XLE	Woodland Edition	XSE	Limited	Platinum
<b>EXTERIOR DIMENSIONS (in.)</b>						
Overall length	203.7	203.7	203.7	204.1	203.7	203.7
Overall width	78.5	78.5	78.5	78.5	78.5	78.5
Overall height, unloaded, with/without roof rails	68.5/69.7	68.5/69.7	68.5/69.7	68.5/69.7	68.5/69.7	68.5/69.7
Wheelbase	120.5	120.5	120.5	120.5	120.5	120.5
Track (front/rear)	67.7/68.5	67.7/68.5	67.7/68.5	67.7/68.5	67.7/68.5	67.7/68.5
Ground clearance	6.37	6.37	6.37	6.37	6.37	6.37
Coefficient of drag (Cd)	0.29	0.29	0.29	0.31	0.29	0.29

## INTERIOR DIMENSIONS, front/second-row/third-row seats (in.)

Passenger volume with/without moonroof (cu. ft.)	159.7/162.5	159.7/162.5	159.7/162.5	159.7/162.5	159.7/162.5	159.7/162.5
Interior volume with/without moonroof (cu. ft.)	193.2/195.9	193.2/195.9	193.2/195.9	193.2/195.9	193.2/195.9	193.2/195.9
Head room	40.1/39.9/37.4	40.1/39.9/37.4	40.1/39.9/37.4	40.1/39.9/37.4	40.1/39.9/37.4	40.1/39.9/37.4
Shoulder room	62.4/62.7/58.5	62.4/62.7/58.5	62.4/62.7/58.5	62.4/62.7/58.5	62.4/62.7/58.5	62.4/62.7/58.5
Hip room	59.6/66.2/48.8	59.6/66.2/48.8	59.6/66.2/48.8	59.6/66.2/48.8	59.6/66.2/48.8	59.6/66.2/48.8
Leg room	40.3/39.9/38.7	40.3/39.9/38.7	40.3/39.9/38.7	40.3/39.9/38.7	40.3/39.9/38.7	40.3/39.9/38.7

## Weights and Capacities

Curb weight (lb.)	4610	4625	4625	4675	4725	4725
Cargo volume <sup>50</sup> (cu. ft.) behind third/second-row/first-row seats	33.5/75.2/101	33.5/75.2/101	33.5/75.2/101	33.5/75.2/101	33.5/75.2/101	33.5/75.2/101
Fuel tank (gal.)	18	18	18	18	18	18
Seating capacity	8	8/7	7	7	7	7

## Towing

Towing capacity <sup>7</sup> (lb.)	3500	3500	3500	3500	3500	3500
------------------------------------	------	------	------	------	------	------

## Tires

All-Season steel-belted radials	S	S	S	S	S	S
Tire repair kit	S	S	S	S	S	S
Spare tire	O	O	O	O	O	O

## Mileage estimates (mpg city/highway/combined)<sup>14</sup>

Front-Wheel Drive (FWD)	36/36/36	36/36/36		36/36/36	36/36/36	36/36/36
All-Wheel Drive (AWD)	35/36/35	35/36/35	35/36/35	35/36/35	35/36/35	35/36/35

## DISCLOSURES

1. Apps and services are subject to change at any time without notice. Data charges may apply. Apple CarPlay® functionality requires a compatible iPhone® connected with an approved data cable into the USB media port. Apple CarPlay® is a registered trademark of Apple Inc. 2. Vehicle user interface is a product of Google and its terms and privacy statement apply. To use Android Auto on your audio display, you'll need an Android Auto compatible vehicle and Android phone. For phone compatibility visit: <https://www.android.com/auto/>. Requires compatible smartphone connected with an approved data cable into the USB media port, and data plan rates apply. Apps and services vary by phone carrier and are subject to change at any time without notice. Android, Android Auto and Waze are trademarks of Google. 3. Toyota Safety Sense™ effectiveness is dependent on many factors including road, weather and vehicle conditions. Drivers are responsible for their own safe driving. Always pay attention to your surroundings and drive safely. See *Owner's Manual* for additional limitations and details. 4. ToyotaCare covers normal factory scheduled maintenance for two years or 25,000 miles, whichever comes first. Certain models require a different maintenance schedule as described in their *Maintenance Guide*. 24-hour Roadside Assistance is also included for two years, unlimited mileage. Roadside Assistance does not include parts and fluids, except emergency fuel delivery. See Toyota dealer for details and exclusions. Valid only in the continental U.S. 5. Extra-cost color. 6. Do not overload your vehicle. See *Owner's Manual* for weight limits and restrictions. 7. Before towing, confirm your vehicle and trailer are compatible, hooked up and loaded properly and that you have any necessary additional equipment. Do not exceed any Weight Ratings and follow all instructions in your *Owner's Manual*. The maximum you can tow depends on base curb weight plus the total weight of any cargo, occupants, and added vehicle equipment. "Added vehicle equipment" includes additional standard/optional equipment and accessories added by the manufacturer, dealers, and/or vehicle owners. The only way to be certain of your vehicle's exact curb weight is to weigh your vehicle without passengers or cargo. [Calculated with the new SAE J2807 method.] Installation of a tow hitch receiver or other accessories located near the rear bumper or side-door kick sensors may require disabling or removing the kick sensor, and the sensor operation setting in your vehicle should be turned off. See *Owner's Manual* for limitations. 8. SofTex® is a registered trademark of Toyota Motor Sales, U.S.A., Inc. 9. Do not use the lounge chair with ottoman when vehicle is in motion (use only when vehicle is stationary). If the ottoman is in use during an accident, the lap belt may slide past the hips. This could result in restraint forces being applied directly to the abdomen, or your neck may contact the shoulder belt, increasing the risk of death or serious injury. See *Owner's Manual* for additional limitations and details. 10. Installation of a tow hitch receiver or other accessories located near the rear bumper or side-door kick sensors may require disabling or removing the kick sensor, and the sensor operation setting in your vehicle should be turned off. Water, weather, dirt, and other conditions also may cause the sensor to not operate properly or to operate unintentionally. See *Owner's Manual* for limitations. 11. Rated for 1500 watts shared between both outlets. Do not exceed 1500W. See *Owner's Manual* for additional limitations and details. 12. 2022 Sienna vs. 2021 and 2022 competitors. Information from manufacturers' websites as of 9/01/2021. Excludes electric vehicles. EPA-estimated 36 city/36 hwy/36 combined mpg for 2021 Sienna FWD models. Use for comparison purposes only. Your mileage will vary for many reasons, including your vehicle's condition and how/where you drive. See <https://www.fueleconomy.gov>. 13. 2022 Sienna vs. 2021 and 2022 competitors. Information from manufacturers' websites as of 9/01/2021. 14. 2022 EPA-estimated mpg ratings. Use for comparison purposes only. Your mileage will vary for many reasons, including your vehicle's condition and how/where you drive. See [www.fueleconomy.gov](https://www.fueleconomy.gov). 15. At speeds of 9 mph or less, Front and Rear Parking Assist with Automatic Braking (PA w/AB) is designed to assist drivers in avoiding potential collisions with nearby static objects when the vehicle is in Drive or Reverse and approaching crossing vehicles when the vehicle is in Reverse. Do not overly rely on PA w/AB. Always look around outside the vehicle and use mirrors to confirm clearance. Certain vehicle and environmental factors, including an object or vehicle's shape, size and composition, may affect the system's effectiveness. See *Owner's Manual* for additional limitations and details. 16. May not be compatible with all mobile phones, MP3/WMA players and like models. 17. Connected Services depends on factors outside of Toyota's control, including an operative telematics device, a cellular connection, GPS signal, and the availability of a compatible wireless network, without which system functionality and availability may be limited or precluded, including access to response center and emergency support. Service may vary by vehicle and region. Subscription required after trial. Terms of Use apply. Data charges may apply. Apps and services subject to change at any time without notice. See [toyota.com/connected-services](https://www.toyota.com/connected-services) for details. To learn about Toyota's data collection, use, sharing and retention practices, please visit <https://www.toyota.com/privacyvts>. Stolen vehicle police report required to use Stolen Vehicle Locator. Connected Services by Toyota trials are at no extra cost. All trials begin on the original date of purchase or lease of a new vehicle, with the exception of Wi-Fi for which the trial begins at the time of activation. Paid subscription required after trial in order to continue accessing the respective services. Terms of Use apply. 18. Safety Connect® depends on factors outside of Toyota's control, including an operative telematics device, a cellular connection, GPS signal, and the availability of a compatible wireless network, without which system functionality and availability may be limited or precluded, including access to response center and emergency support. Stolen vehicle police report required to use Stolen Vehicle Locator. Some features may require the Toyota app. Registration required. Subscription required after trial. Service subject to change at any time without notice. Terms of Use apply. Data charges may apply. Service may vary by vehicle and region. See usage precautions and service limitations in *Owner's Manual* and at [toyota.com/connected-services](https://www.toyota.com/connected-services) for additional details. To learn about Toyota's data collection, use, sharing and retention practices, please visit <https://www.toyota.com/privacyvts>. The Safety Connect® trial period is at no extra cost and begins on the original date of purchase or lease of a new vehicle. Paid subscription required after trial to access the service. 19. Requires adequate cellular coverage and GPS signal strength. May not work in all areas. Service may vary by vehicle and region. See Toyota Dealer for details and exclusions. 20. Information provided is based on the last time data was collected from the vehicle and is not real time data. Service Connect depends on factors outside of Toyota's control, including an operative telematics device, a cellular connection, GPS signal, and the availability of a compatible wireless network, without which system functionality and availability may be limited or precluded. Service may vary by vehicle and region. Registration required. Subscription required after trial. Service subject to change at any time without notice. Terms of Use apply. Data charges may apply. See usage precautions and service limitations in *Owner's Manual* and at [toyota.com/connected-services](https://www.toyota.com/connected-services) for additional details. To learn about Toyota's data collection, use, sharing and retention practices, please visit <https://www.toyota.com/privacyvts>. The Service Connect trial period is at no extra cost and begins on the original date of purchase or lease of a new vehicle. Subscription required after trial. Service Connect renewal will be included when Safety Connect®, Remote Connect or Destination Assist connected service renewal is selected. Service Connect is not renewable as a stand-alone service. 21. Use only if aware of circumstances surrounding vehicle and it is legal and safe to do so (e.g., do not remotely start engine if vehicle is in an enclosed space or vehicle is occupied by a child). Toyota Remote Connect depends on factors outside of Toyota's control, including an operative telematics device, a cellular connection, GPS signal, and the availability of a compatible wireless network, without which system functionality and availability may be limited or precluded. Service may vary by vehicle and region. Registration and Toyota app download required. Subscription required after trial. Terms of Use apply. Data charges may apply. Remote start/stop not available on manual transmission-equipped vehicles. Services subject to change at any time without notice. See usage precautions and service limitations in *Toyota Owner's Manual* and at <https://www.toyota.com/connected-services> for additional details. To learn about Toyota's data collection, use, sharing and retention practices, please visit <https://www.toyota.com/privacyvts>. The Toyota Remote Connect trial period is at no extra cost and begins on the original date of purchase or lease of a new vehicle. Paid subscription required after trial to access the service. Terms of Use apply. 22. Eligible vehicle and wireless service required. Wi-Fi Connect depends on factors outside of Toyota's control, including an operative telematics device, a cellular connection, GPS signal, and the availability of a compatible wireless network, without which system functionality and availability may be limited or precluded. Wi-Fi Connect coverage and service not available everywhere. Valid in the contiguous U.S. and Alaska. Do not drive distracted. Go to [att.com/toyota](http://att.com/toyota) for terms and conditions. Data usage and charges apply. Up to 5 devices can be supported using in-vehicle connectivity. Apps and services subject to change at any time without notice. The Wi-Fi Connect trial begins at the time of activation and expires when 2GB of data is used or when the 3-month period ends. Subscription required after trial. Terms and conditions apply. 23. Destination Assist depends on factors outside of Toyota's control, including an operative telematics device, a cellular connection, GPS signal, and the availability of a compatible wireless network, without which system functionality and availability may be limited or precluded. Use common sense when relying on this information. Service may vary by vehicle and region. Registration required. Subscription required after trial. Services subject to change at any time without notice. Terms of Use apply. Data charges may apply. See *Owner's Manual* and [toyota.com/connected-services](https://www.toyota.com/connected-services) for additional limitations and details. To learn about Toyota's data collection, use, sharing and retention practices, please visit <https://www.toyota.com/privacyvts>. The Destination Assist trial period is at no extra cost and begins on the original date of purchase or lease of a new vehicle. After the trial period expires, enrollment in a paid subscription is required to access the service. 24. iPhone® is a registered trademark of Apple Inc. All rights reserved. 25. Android is a trademark of Google LLC. 26. Trial length and service availability may vary by model, model year or trim. Service will automatically stop at the end of your trial subscription period unless you decide to continue service. If you do not wish to enjoy your trial, you can cancel by calling the number below. All SiriusXM services require a subscription, each sold separately by SiriusXM after the trial period. **Service subject to the SiriusXM Customer Agreement and Privacy Policy; visit [www.siriusxm.com](http://www.siriusxm.com) to see complete terms and how to cancel which includes calling 1-866-635-2349.** Some services and features are subject to device capabilities and location availability. All fees, content and features are subject to change. SiriusXM, Pandora and all related logos are trademarks of Sirius XM Radio Inc. and its respective subsidiaries. 27. SiriusXM trial length and service availability may vary by model, model year or trim. 28. Amazon, Alexa and all related marks are trademarks of Amazon.com, Inc. or its affiliates. Certain functions require adequate signal strength and/or smartphone technology/connectivity. Not all Amazon Alexa functionality is available for in-vehicle use. See applicable app for details. Download of the Toyota app and Toyota+Alexa app are both required to begin in-vehicle use of Alexa. Data charges may apply for certain functions. Apps and services subject to change at any time without notice. To learn more, go to <https://www.toyota.com/audio-multimedia>. To learn more about Toyota's data collection, use, sharing and retention practices, please visit <https://www.toyota.com/privacyvts>. 29. JBL® is a registered trademark of Harman International Industries, Inc. 30. The Pre-Collision System (PCS) with Pedestrian Detection (PD) is designed to determine if impact is imminent and help reduce impact speed and damage in certain frontal collisions involving a vehicle, a pedestrian or a bicyclist. PCS w/PD is not a substitute for safe and attentive driving. System effectiveness depends on many factors, such as speed, size and position of pedestrian or bicyclist and weather, light and road conditions. See *Owner's Manual* for additional limitations and details. 31. Full-Speed Range Dynamic Radar Cruise Control (DRCC) is designed to assist the driver and is not a substitute for safe and attentive driving practices. System effectiveness is dependent on many factors including road, weather and traffic conditions. Vehicles with manual transmission have regular DRCC. See *Owner's Manual* for additional limitations and details. 32. Lane Departure Alert with Steering Assist is designed to read visible lane markers under certain conditions. It provides a visual and audible alert and slight steering force when lane departure is detected. It is not a collision-avoidance system or a substitute for safe and attentive driving. Effectiveness is dependent on many factors including road, weather and vehicle conditions. See *Owner's Manual* for additional limitations and details. 33. Automatic High Beams operate at speeds above 25 mph. Factors such as a dirty windshield, weather, lighting and terrain limit effectiveness, requiring the driver to manually operate the high beams. See *Owner's Manual* for additional limitations and details. 34. Lane Tracing Assist (LTA) is designed to read visible lane markers and detect other vehicles under certain conditions. It is only operational when DRCC is engaged. See *Owner's Manual* for additional limitations and details. 35. Do not rely exclusively on Road Sign Assist (RSA). RSA is a driver support system that utilizes the vehicle's forward-facing camera and navigation system (when data is available) to recognize certain road signs and provide information to the driver via the multi-information display and/or Head-Up Display. Effectiveness is dependent on road, weather, vehicle and sign conditions. Use common sense when using RSA and do not drive distracted. See *Owner's Manual* for additional limitations and details. 36. EV Mode lets you operate solely on battery power at low speeds for short distances and in limited circumstances,

## DISCLOSURES

such as in a parking garage. Different conditions may prevent or limit usage. See your *Owner's Manual* for limitations and details. **37.** When the system is on, Electric Parking Brake is designed to engage the Parking Brake under limited conditions. It may not hold the vehicle under all conditions. See *Owner's Manual* for additional limitations and details. **38.** When the system is on, Brake Hold is designed to keep the brakes engaged after the driver brings the vehicle to a complete stop. It may not hold the vehicle under certain conditions and does not function when the vehicle is in reverse. Brake Hold is not a substitute for safe and attentive driving. See *Owner's Manual* for additional limitations and details. **39.** Airbag systems are Supplemental Restraint Systems and are designed to inflate only under certain conditions and in certain types of severe collisions. To decrease the risk of injury from an inflating airbag, always wear seatbelts and sit upright in the middle of the seat as far back as possible. Do not put objects in front of an airbag or around the seatback. Do not use a rearward-facing child seat in any front passenger seat. See *Owner's Manual* for additional limitations and details. **40.** Do not rely exclusively on the Blind Spot Monitor. Always look over your shoulder and use your turn signal. There are limitations to the function, detection and range of the monitor. See *Owner's Manual* for additional limitations and details. **41.** Do not rely exclusively on the Rear Cross-Traffic Alert system. Always look over your shoulder and use your mirrors to confirm rear clearance. There are limitations to the function, detection and range of the system. See *Owner's Manual* for additional limitations and details. **42.** Qi wireless charging may not be compatible with all mobile phones, MP3/WMA players and like models. When using the wireless charging system, avoid placing metal objects between the wireless charger and the mobile device when charging is active. Doing so may cause metal objects to become hot and could cause burns. **43.** JBL® and Clari-Fi® are registered trademarks of Harman International Industries, Inc. **44.** The Smart Key System may interfere with some pacemakers or cardiac defibrillators. If you have one of these medical devices, please talk to your doctor to see if you should deactivate this system. **45.** Dynamic Navigation depends on factors outside of Toyota's control, including an operative telematics device, a cellular connection, GPS signal, and the availability of a compatible wireless network, without which system functionality and availability may be limited or precluded. Services not available in every city or roadway. Use common sense when relying on information provided. Service may vary by vehicle and region. Registration is required. Subscription required after trial. Terms of Use apply. Data charges may apply. See *Owner's Manual* and <https://www.toyota.com/connected-services> for additional limitations and details. To learn about Toyota's Connected Services data collection, use, sharing and retention practices, please visit <https://www.toyota.com/privacycts/>. **46.** The Dynamic Navigation trial period is at no extra cost and begins on the original date of purchase or lease of a new vehicle. Paid subscription required after trial to access the service. **47.** This floor mat/floor liner was designed specifically for use in your model and model year vehicle and SHOULD NOT be used in any other vehicle. To avoid potential interference with pedal operation, each mat/liner must be secured with its fasteners. Do not install a floor mat/floor liner on top of an existing floor mat/floor liner. **48.** HomeLink® and the HomeLink® house icon are registered trademarks of Gentex Corporation. **49.** The Bird's Eye View Camera does not provide a comprehensive view of the area surrounding the vehicle and you should also look around the vehicle, using mirrors to confirm surrounding clearance. Environmental conditions may limit effectiveness and view may become obscured. See *Owner's Manual* for additional limitations and details. **50.** Cargo and load capacity limited by weight and distribution. Always properly secure cargo and cargo area. **51.** Dashcam may not record under certain conditions. Always respect the privacy rights of others. See your dashcam *Owner's Manual* for details. **52.** Toyota strives to build vehicles to match customer interest and thus they typically are built with popular options and option packages. Not all options/packages are available separately and some may not be available in all regions of the country. If you would prefer a vehicle with no or different options, contact your dealer to check for current availability or the possibility of placing a special order. Color(s) depicted may vary based on multiple factors, including ambient lighting and the format in which it is being viewed (e.g., computer, mobile device or print). **53.** The backup camera does not provide a comprehensive view of the rear area of the vehicle and you should also look around the vehicle, using mirrors to confirm rearward clearance. Environmental conditions may limit effectiveness and view may become obscured. See *Owner's Manual* for additional limitations and details. **54.** Headphones are for passenger use only. **55.** The Bluetooth® word mark and logos are registered trademarks owned by Bluetooth SIG, Inc., and any use of such marks by Toyota is under license. A compatible Bluetooth®-enabled phone must first be paired. Phone performance depends on software, coverage and carrier. **56.** Rated for 12 volts. See *Owner's Manual* for additional limitations and details. **57.** Vehicle Stability Control is an electronic system designed to help the driver maintain vehicle control under adverse conditions. It is not a substitute for safe and attentive driving practices. Factors including speed, road conditions, weather and driver steering input can all affect whether VSC will be effective in preventing a loss of control. See *Owner's Manual* for additional limitations and details. **58.** Brake Assist is designed to help the driver take advantage of ABS and is not a substitute for safe driving practices. Braking effectiveness also depends on proper vehicle maintenance, tire and road conditions. See *Owner's Manual* for additional limitations and details. **59.** Smart Stop Technology® operates only in the event of certain contemporaneous brake and accelerator pedal applications. When engaged, the system will reduce power to help the brakes bring the vehicle to a stop. Factors including speed, road conditions and driver input can all impact stopping distance. Smart Stop Technology® is not a substitute for safe and attentive driving and does not guarantee instant stopping. See *Owner's Manual* for additional limitations and details. **60.** The Tire Pressure Monitor System alerts the driver when tire pressure is critically low. For optimal tire wear and performance, tire pressure should be checked regularly with a gauge; do not rely solely on the monitor system. See *Owner's Manual* for additional limitations and details. **61.** Building and/or parking structures may limit system effectiveness. Stolen vehicle police report required to use Stolen Vehicle Locator. For additional assistance contact the Toyota Customer Experience Center at 1-800-331-4331. **62.** Hill Start Assist Control is designed to help minimize backward rolling on steep ascents. It is not a substitute for safe driving judgment and practices. Factors including speed, grade, surface conditions and driver input can all affect whether HAC will be effective in preventing a loss of control. See *Owner's Manual* for additional limitations and details. **63.** The engine immobilizer is a state-of-the-art anti-theft system that is initiated when you insert your key into the ignition switch or bring a Smart Key fob into the vehicle. The engine will only start if the code in the transponder chip inside the key/fob matches the code in the vehicle's immobilizer. The transponder chip is embedded in the key/fob and can be costly to replace. If you lose a key or fob, your Toyota dealer can help or go to [www.aloa.org](http://www.aloa.org) to find a qualified locksmith in your area who can perform high-security key service. **64.** Google Assistant is a trademark of Google LLC.

Toyota strives to build vehicles to match customer interest and thus they typically are built with popular options and option packages. Not all options/packages are available separately and some may not be available in all regions of the country. See [toyota.com](http://toyota.com) for information about options/packages commonly available in your area. If you would prefer a vehicle without any or with different options, contact your dealer to check for current availability or the possibility of placing a special order.

Color(s) depicted may vary based on multiple factors, including ambient lighting and the format in which it is being viewed (e.g., computer, mobile device or print).

Some vehicles are shown with available equipment. Seatbelts should be worn at all times. For details on vehicle specifications, standard features and available equipment in your area, contact your Toyota dealer. A vehicle with particular equipment may not be available at the dealership. Ask your Toyota dealer to help locate a specifically equipped vehicle.

All information presented herein is based on data available at the time of posting, is subject to change without notice and pertains specifically to mainland U.S.A. vehicles only. Vehicles shown may be prototypes, shown using visual effects and/or shown with options. Actual models may vary.



**Mobility**

For Toyota Mobility program details, go to [www.toyota.com/mobility](http://www.toyota.com/mobility) or call the Toyota Brand Engagement Center at 1-800-331-4331