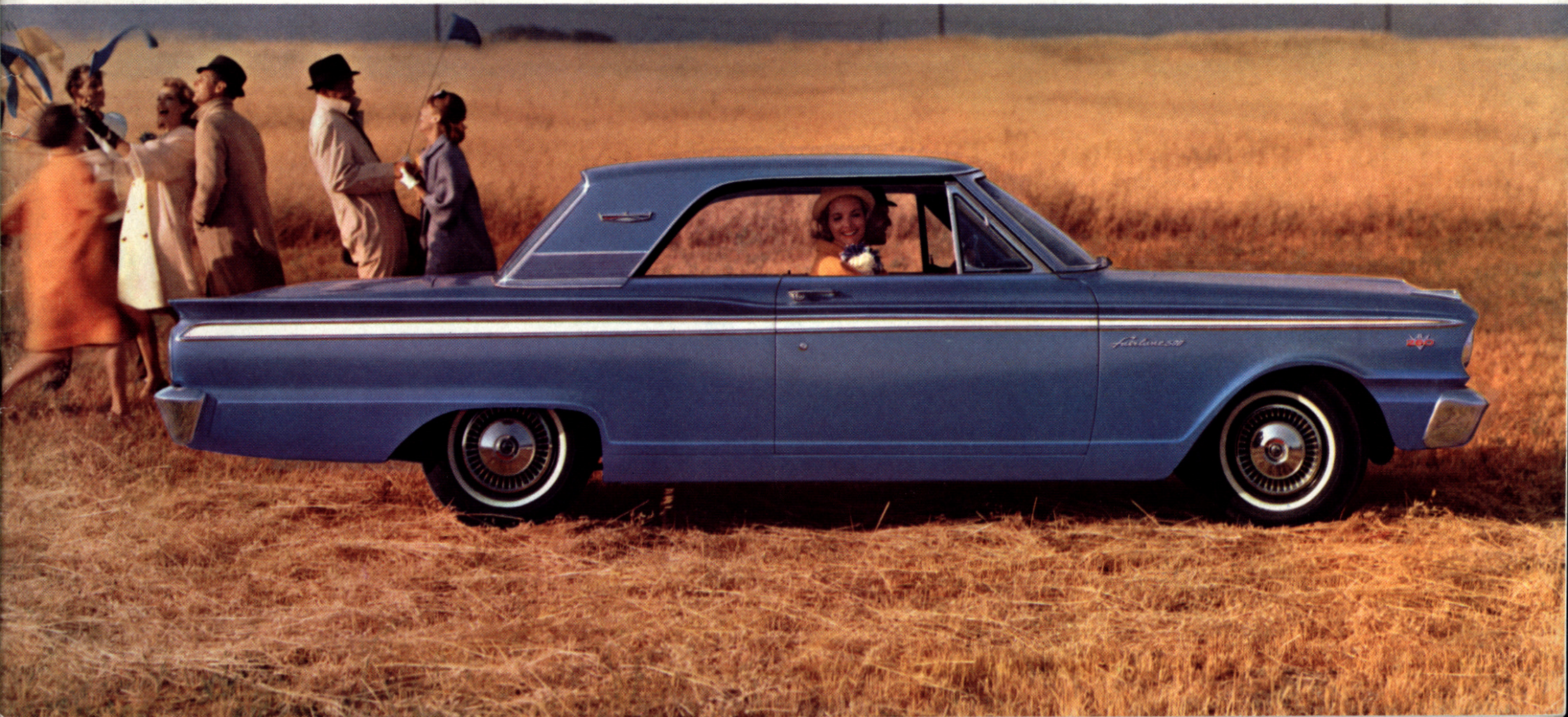


1963 FORD FAIRLANE

FAIRLANES • FAIRLANE 500'S • FAIRLANE WAGONS





Trim and terrific

Presenting for the first time a full line of Ford Fairlanes! The styling's new with crisp Thunderbird smartness. The choice is nine models wide—with a dashing new Fairlane Hardtop (front cover), a jaunty, bucket-seated Sports Coupe, three big, brand-new 4-door wagons, led by the luxurious Fairlane Squire (at left) and four sedans. Each brings you full size where it counts. Big-car room, ride and performance wrapped up in a neat and nimble new size at a remarkably slim and saving price.

Fairlane is the newest, happiest idea in cars to come along in years—and it's a Ford exclusive. Also exclusively Fairlane is the brisk liveliness of Challenger 260 and 221 V-8's*. For gas savings close to the compacts, the standard Fairlane Six is hard to beat. In all, there are eight Fairlane power teams to give you your kind of performance.

There's more time for riding and driving fun in a Fairlane because this trim, fleet new car includes every one of the service-saving features pioneered by Ford. Twice-a-Year Maintenance . . . 6,000 miles between service stops. You go 36,000 miles between major chassis lubes; 6,000 miles between oil changes and minor lubes (under normal driving conditions). Quick, quiet, solid as they come, all Fairlanes are built to a high standard of quality unprecedented at this price. And the price is so right for this size car that Fairlane is well on its way to racking up another new Ford sales success record!

*Optional

Cover: Fairlane 500 Hardtop Left: Fairlane Squire with optional wagon roof rack



FAIRLANE SEDANS

Few big cars—regardless of price—offer more in room and ride than Fairlanes. Few compacts offer more than Fairlanes in handling ease and economy. No car in any size . . . at any price . . . can give you all the advantages of these 2- and 4-door sedans. Roomy comfort for six (plus big 29-cu. ft. trunk!) with easy handling and trimness for traffic. Fine-car quality inside and out with e-a-s-y going on gas and a compact-size price tag. Add in Ford styling smartness and care-free features and you'll get an idea why this car has become so popular so fast.

STANDARD EQUIPMENT: Choice of "Square-Puff" Cloth and Vinyl Interior in Blue, Gold or Red — Choice of 15 Diamond Lustre Enamel Exterior Colors ■ Bright-Metal Windshield, Rear Window and Drip Rail Moldings ■ Fairlane Bright-Metal Body Trim and Moldings ■ White Vinyl Headlining ■ Color-Keyed, 3-Spoke Steering Wheel ■ Dual Sun Visors and Coat Hooks ■ Front Arm Rests and Ash Tray ■ Glove Box Lock ■ Front Seat Belt Anchors ■ Safety-Yoke Door Locks ■ Foam-Cushioned Front Seat ■ Turn Signals (with new amber safety lenses in front bumper) ■ Parallel Action Single-Speed Electric Wipers ■ Illuminated Trunk (with taillights on) ■ Fairlane Six Engine (101 hp) ■ 3-Speed Manual Transmission ■ Self-Adjusting Brakes ■ Zincclad Rocker Panels and Main Underbody Members ■ 6,000-Mile Full-Flow Oil Filter ■ Fully Aluminized Muffler ■ 36,000-Mile (replaceable element) Fuel Filter ■ Heater.

POPULAR OPTIONS AND ACCESSORIES: Choice of Two Challenger V-8's, 145 or 164 hp ■ Choice of Overdrive (V-8's only) or Fordomatic Drive ■ 20 Two Tone Paint Combinations ■ Two-Speed Electric Wipers-Windshield Washer ■ All-Transistor, Push Button Radio ■ White Sidewall Tires ■ Cigarette Lighter ■ Backup Lights ■ Padded Instrument Panel and Cushioned Sun Visors ■ Seat Belts

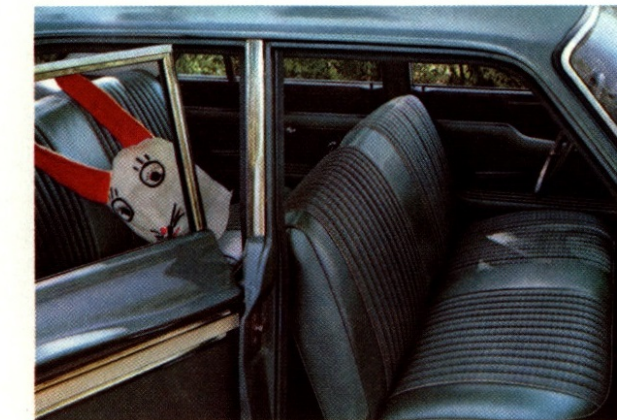
BASIC SPECIFICATIONS: Over-all Length 197.6" ■ Over-all Width 71.3" ■ Over-all Height 55.4" ■ Wheelbase 115.5" ■ Curb Weight (approx.) 2-Door 2931 lb., 4-Door 2970 lb. ■ Trunk Volume 29.0 cu. ft.

*See back cover for complete specifications
See page 15 for Options, Accessories and Power Teams*

Left: Fairlane 2-Door Sedan (4-Door Sedan also offered).



Left: Fairlane 500 4-Door Sedan (2-door model also offered)



FAIRLANE 500 SEDANS

Big doors swing wide—the interior is automatically “courtesy-lighted” to welcome you in. In 500's, you can choose from four rich upholsterys in pleated cloth and vinyl. Front seats are foam-cushioned (as in every Fairlane); there are arm rests front and rear; floors are trimmed wall-to-wall in color-keyed carpet. Under the hood put one of the fiery Challenger V-8 options, and you'll have going as spirited as it is elegant!

STANDARD EQUIPMENT: Includes Fairlane equipment listed on page 5 with these variations: Choice of “Wheel-Pattern” Pleated Cloth and Vinyl Interior Trims in Blue, Turquoise, Beige or Red ■ Bright-Metal Side Window Moldings ■ Fairlane 500 Body Trim ■ Front and Rear Arm Rests and Ash Trays ■ Cigarette Lighter ■ Automatic Dome Light ■ Chrome Horn Ring ■ Color-Keyed, Wall-to-Wall Carpet

POPULAR OPTIONS AND ACCESSORIES: Challenger V-8's, 145 or 164 hp ■ Overdrive (V-8's only) or Fordomatic Drive ■ Backup Lights ■ 20 Two Tone Paint Combinations ■ All-Transistor, Push Button Radio ■ White Sidewall Tires ■ Power Brakes ■ Ford Economy Air Conditioner ■ Deluxe Wheel Covers, Full Disc or Simulated Wire Wheel Designs.

BASIC SPECIFICATIONS: Same as Fairlane except: Curb Weight (approx.) 2-Door 2946 lb., 4-Door 2985 lb.

See page 15 for Options, Accessories and Power Teams
See back cover for complete specifications



FAIRLANE 500 HARDTOPS

Hot and handsome—not just a new hardtop but a pair of them! Outside, the swift, crisp lines of Thunderbird. Inside, luxury that could come only from the stylists of Thunderbird! The new Sports Coupe has deep foam-cushioned bucket seats up front, a full-length console with spacious storage compartment in between and 3-passenger “bucket-styled” rear seat. Choose from four pleated trims of leather-grained all-vinyl. The 500 Hardtop, with conventional seats, is every bit as smart. Trim choices include four cloth-and-vinyl combinations. Either of these new Fairlanes can tell you a remarkable story of quality. In the sound of solid-closing doors (with easy-operating, tight-gripping Safety-Yoke locks). In the ride of luxury-car quiet and smoothness (with the magic of underbody “torque boxes”). This is quality every Fairlane shares!

STANDARD EQUIPMENT: Fairlane 500 Hardtop equipment includes the items listed for Fairlane and Fairlane 500 Sedans on pages 5 and 7 plus “Floating” Rearview Mirror. In addition, the **Sports Coupe** includes the following:

Choice of All-Vinyl Interior Trims in Blue, Turquoise, Red, or Gold ■ Front Bucket Seats, Foam-Cushioned, with Center Console ■ Unique White Whipcord Vinyl Headlining ■ “Bucket-Styled” Rear Seat ■ Fairlane Sports Coupe Body Trim ■ Deluxe Wheel Covers with Simulated “Knock-Off” Spinners

POPULAR OPTIONS AND ACCESSORIES: Choice of Two Challenger V-8's, 145 or 164 hp ■ Choice of Overdrive (V-8's only) or Fordomatic Drive ■ 2-Speed Electric Wipers—Windshield Washer ■ Power Brakes ■ Power Steering ■ All-Transistor, Push Button Radio ■ Padded Instrument Panel and Visors ■ Seat Belts

See page 15 for Options, Accessories and Power Teams

BASIC SPECIFICATIONS: Over-all Length 197.6" ■ Over-all Width 71.3" ■ Over-all Height 54.5" ■ Wheelbase 115.5" ■ Curb Wt. (approx.) 500 Hdtp. 2964 lb., Sports Coupe 2984 lb. ■ Trunk Vol. 29.0 cu. ft.

See back cover for complete specifications

Foreground: Fairlane 500 Sports Coupe **Background:** Fairlane 500 Hardtop

FAIRLANE WAGONS

... These Fairlanes are bound to stir excitement in the wagon world. They're true to the Fairlane formula: roomy as big wagons (cargo space—86.2 cu. ft.), yet trim and easy-handling as compact wagons. And because they're built by Ford, the wagon specialist, they're loaded with great wagon features. Handsome yet rugged interiors (example: Custom Ranch Wagon trim at far right, one of three choices). Quick-converting second seat. Counterbalanced tailgate with roll-down window . . . to name a few. If you're a wagon fancier, be sure to see what Fairlane has done for wagons (and low wagon prices!).

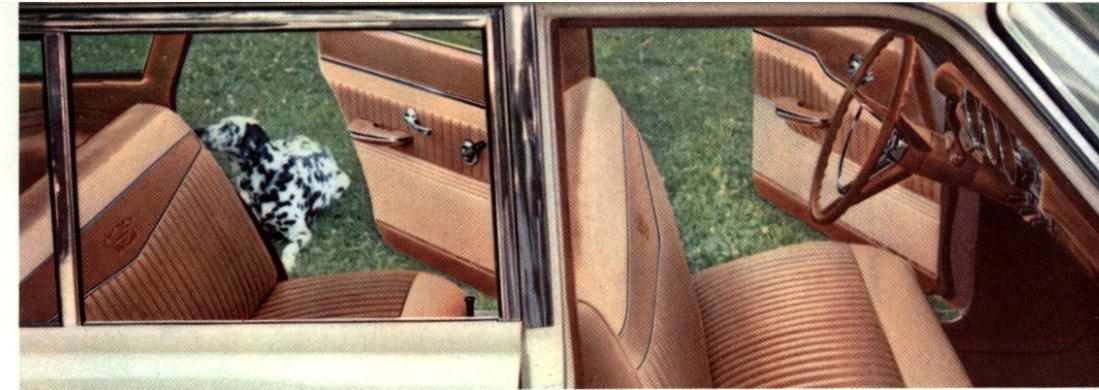
STANDARD EQUIPMENT: Ranch Wagon includes the items listed for Fairlane Sedans on page 5 with these variations: Choice of "Preline Pattern" Vinyl and Vinyl Interior Trims in Blue, Red and Beige ■ Foam-Cushioned Seats, Front and Rear ■ Color-Keyed Cargo Area Floor Vinyl Inlay ■ Roll-Down Tailgate Window (painted molding) ■ Folding Second Seat

Custom Ranch Wagon includes Fairlane 500 Sedan equipment listed on page 7 and add the following to items listed above: Choice of Beige Pleated "Wheel-Pattern" Cloth and Vinyl plus Pleated All-Vinyl Interior Trims in Red or Blue ■ Color-Keyed, Vinyl-Coated Rubber Floor Covering ■ Storage Compartment Lock ■ Bright-Metal Tailgate Window Molding

POPULAR OPTIONS AND ACCESSORIES: Two Challenger V-8's, 145 or 164 hp ■ For V-8's—Choice of Overdrive or Fordomatic Drive ■ 2-Speed Electric Wipers—Windshield Washer ■ Power Brakes ■ Power Steering ■ Backup Lights ■ Cigarette Lighter (Ranch Wagon only) ■ White Sidewall Tires ■ 20 Two Tone Paint Combinations ■ Rear-Facing Third Seat with All-Foam Cushion and Back ■ Access Step

See page 15 for Options, Accessories and Power Teams

BASIC SPECIFICATIONS: Over-all Length 201.8" ■ Over-all Width 71.3" ■ Over-all Height 56.6" ■ Wheel-base 115.5" ■ Curb Weight (approx.) Ranch Wagon 3328 lb., Custom Ranch Wagon 3345 lb. ■ Cargo Volume 86.2 cu. ft.

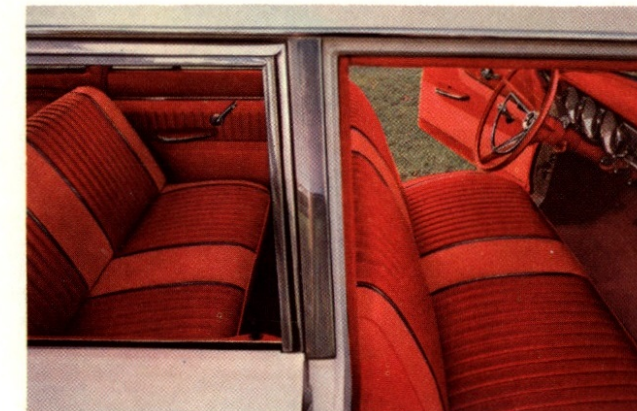


Background: Custom Ranch Wagon Foreground: Ranch Wagon





Left: Fairlane Squire with optional wagon roof rack



FAIRLANE SQUIRE

Here is Canada's richest wagon styling in the all-new size of Fairlane. Elegant woodlike trim, three luxurious trims, full carpeting and power tailgate window (all standard equipment) make Squire finer by far than any other wagon near its price. This one takes on loads in style, too. Like all Fairlane wagons, the load floor measures 9½ feet from front seat to tailgate tip and nearly 5 feet from side to side. If you need more room for folks, the optional rear-facing third seat boosts the capacity of any Fairlane wagon to eight.

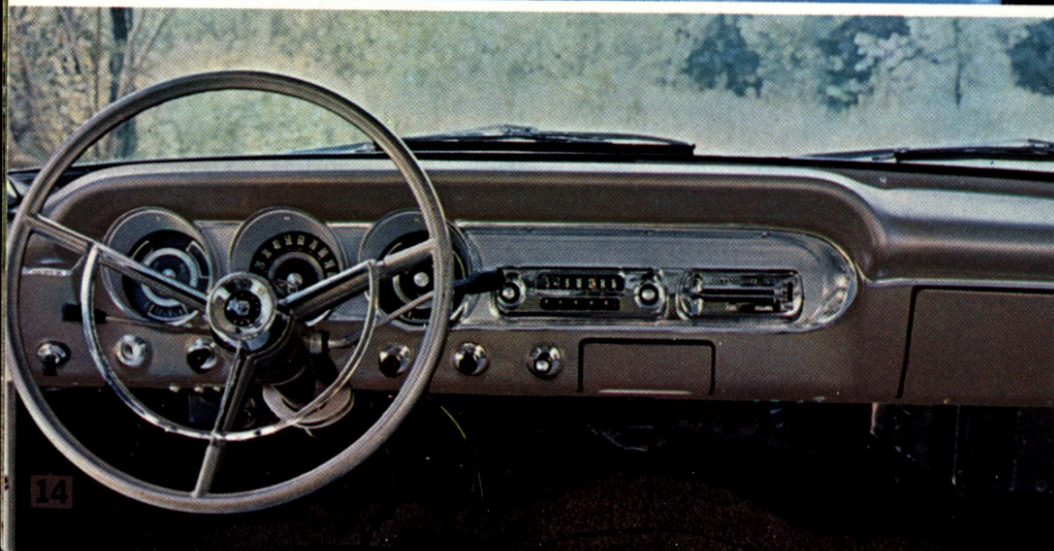
STANDARD EQUIPMENT: Additional items over and above equipment listed on page 10: Choice of Beige Pleated "Wheel-Pattern" Cloth and Vinyl or Pleated All-Vinyl Interior Trims in Red or Blue ■ Distinctive Limed Oak Fiberglass Moldings Enclosing Walnut-Colored Steel Panels on Body Sides and Rear ■ Color-Keyed Carpeting on Passenger Floor ■ Power-Operated Tailgate Window

POPULAR OPTIONS AND ACCESSORIES: Two Challenger V-8's, 145 or 164 hp ■ For V-8's Choice of Overdrive or Fordomatic Drive ■ Power Brakes ■ Power Steering ■ Padded Instrument Panel and Visors ■ Third Seat All-Foam Cushion and Back ■ Tinted Windshield ■ Third Seat Access Step

See Page 15 for Options, Accessories and Power Teams

BASIC SPECIFICATIONS: Same as Fairlane Ranch and Custom Ranch Wagons except: Curb Weight (approx.) 3339 lb.

See back cover for complete specifications



FAIRLANE FEATURES

TWICE-A-YEAR MAINTENANCE—The extra quality built into every 1963 Fairlane saves you time, bother and money. Twice-a-year maintenance is typical—it means 6,000 miles between service stops. Under normal driving conditions you'll go 36,000 miles between major chassis lube . . . 6,000 miles between oil changes and minor lube. You'll go 36,000 miles between fuel filter changes with 24,000 mile intervals on front wheel-bearing service. Brakes and engine valves are self-adjusting. Muffler is fully aluminized . . . vital underbody members galvanized. You'll even go 36,000 miles or two years between changes of engine coolant-antifreeze.

LUXURY-CAR APPOINTMENTS AND TRIM—From the deep-pleated bucket seats of the Sports Coupe to the attractive trim of the lowest-priced Fairlane Sedan you get styling and appointments to please the most exacting taste. Interior fabrics and carpeting are rich, durable and carefully co-ordinated. Control panels are as attractive as they are functional.

FULL 6-PASSENGER ROOMINESS AND COMFORT—Fairlane is roomy where it counts—inside. Plenty of big-car comfort for six people. Luggage space is unusually generous, bigger than some luxury cars. For long-trip comfort, all sedan front seats are foam-cushioned (wagons have it front and rear). Arm rests, sun visors, coat hooks, 3-spoke color-keyed steering wheel and numerous other features are standard equipment on all Fairlanes.

QUALITY SECOND TO NONE—Fairlanes are designed, engineered and built with quality as the foremost consideration. Precision fit of doors, deck lid and hood, plus the fine details of trim and finish are all proof of Fairlane quality.

SELF-ADJUSTING BRAKES automatically adjust themselves for the life of the lining. Adjustment occurs when needed by simply applying the brakes as the car is moving backward.

FRONT AND REAR SUSPENSION. Front springs mounted on top of suspension arms cushion up-and-down wheel movement. Tilted control arms reduce front end "dive" in braking. Rear suspension features 55-inch, multi-leaf springs with offset axle mounting for maximum stability and ride control.

LOW UPKEEP, THRIFTY WITH GAS, LOW PRICE. Brakes and engine valves are self-adjusting. Mufflers are fully aluminized, vital underbody parts are galvanized, to keep service to a bare minimum. Moreover, all Fairlane engines, from the 101 h.p. Six to the 164 h.p. Challenger 260 V-8 option perform beautifully on regular gas. In fact, the only thing that's more economical about a Fairlane is its low price tag!

LUXURY-CAR RIDE. Over every road, Fairlane rewards you with a quiet smoothness that up to now has been reserved for cars far above Fairlane in price. In traffic, you start up from lights without rear-end "squat". Braking—even in quick short-space stops—is remarkably free of annoying front end "nose dive".

TRIM HANDLING AND MANOEUVRABILITY. Just one more bonus of Fairlane's unique size. Nearly a foot shorter than other big cars, Fairlane is delightfully trim and agile. It's a cinch in traffic, a snap to park. Your garage grows overnight. And Fairlane clings to curves and corners with sure-footed grace.

FAIRLANE OPTIONS & ACCESSORIES

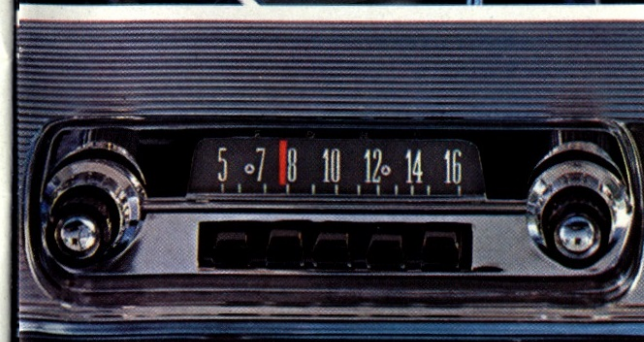
LIFEGUARD DESIGN—Popular safety options available on all Fairlane models at slight extra cost include: Safety-Padded Instrument Panel and Padded Visors; Floor-Anchored Safety Seat Belts; "Life-guard Jr." Door Locks to prevent tiny hands from accidentally opening rear doors. At absolutely no extra cost, every Fairlane offers you these standard safety features, pioneered by Ford: Safety-Padded Arm Rests; 3-Spoke, Deep-Dish Steering Wheel and Safety-Yoke Door Locks, tight-gripping to hold doors tightly closed.

POWER BRAKES—Cut braking effort in half! Engine vacuum-powered with vacuum reserve for extra safety. Deliver precision full-stop control with low-pedal convenience. Reduce driver fatigue, increase safety for all driving.

POWER TAILGATE WINDOW—Provides convenient remote-controlled ventilation and tailgate access. Can be operated from the driver's seat or by key-operated outside control in tailgate. Window must be completely rolled down before tailgate can be opened. (Standard on Fairlane Squire.)

POWER STEERING—Up to 75 per cent of the steering work is done for you, yet you retain the "feel-of-the-road" for driving safety. Resists shocks and steering reaction to ruts and other road irregularities for relaxed driving comfort and handling ease. Especially helpful in parking and low-speed manoeuvring. Illustrated below.

ALL-TRANSISTOR RADIO—New, all transistor AM radio with five station push buttons and manual tuning. Powerful reception and rich, full tone. Transistors permit instant warm-up, low battery drain. Illustrated below.

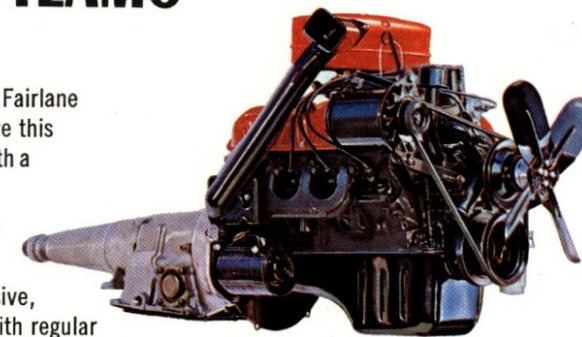


REAR-FACING SEAT. Easily, quickly installed to give any Fairlane wagon 8-passenger room. Foam-padded cushion and seat back for comfort, all-vinyl trim matched to all wagon interiors for smartness. Conveniently stowed in underfloor compartment when not in use.

DELUXE WHEEL COVERS. Sporty, fully chromed simulated wire-wheel type, or deluxe full-disc design.

PLUS: Spotlight and Mirror. Back-up Lights. White Sidewall Tires. Two Tone Paint. 2-Speed Electric Wipers—Windshield Washer. Radio Rear Speaker. Tinted Windshield. Tissue Dispenser. Outside Rearview Mirrors. All-Vinyl Interior Trim (Hardtop). Door Edge Moldings. Seat Covers. Contour Floor Mats. Rocker Panel Moldings. Locking Gas Cap. Heavy-Duty 54-Plate, 55 Amp-Hr Battery. Luggage Rack and Cover. Third Seat Access Step. Interior Switch (on tailgate) for power Tailgate Window (from third seat). Storage Compartment Lock (Ranch Wagon) and many others.

POWER TEAMS



CHALLENGER 260 V-8 (optional). Like all Fairlane engines, Ford engine-building "firsts" give this robust 164 h.p. all the toughness of iron with a light weight that iron never had before. Result: lively, solid power on regular gas.

CHALLENGER 221 V-8 (optional). Responsive, powerful, economical! You get 145 h.p. with regular gas economy. An outstanding performer in every speed range.

FAIRLANE SIX (standard). Every thrifty, gas saving feature of Falcon is built into this, Fairlane's 101-h.p. engine. New hydraulic self-adjusting valve lifters provide quieter, more carefree operation.

3-SPEED MANUAL TRANSMISSION—Has shot-peened, fine pitch helical gears for high strength and quietness, with forged bronze bushings for smooth operation.

FAIRLANE OVERDRIVE—Automatic planetary-type fourth gear added to manual shift transmission. Reduces engine RPM's by 28 per cent—saves gas. (Available on V-8's only.)

FAIRLANE FORDOMATIC—Smooth, 2-speed transmission with proven dependability. Kick-down to low gear for quick passing. Engine-braking in low. (Offered with all engines in sedans and with V-8's in wagons.)

BODY & CHASSIS FEATURES

BODY STRUCTURE AND INSULATION—Single-unit welded steel construction gives the Fairlane body its solid strength while reducing excess weight and bulk. Squeaks and rattles are "designed out"; doors close quietly, surely, thanks to Safety-Yoke locks. Abundant body insulation creates a barrier against noise.

TORQUE BOXES—These box-like structures connect main underbody members for greater strength and a big reduction in road noise, vibration and road harshness. They soak up noise and road roughness before it reaches the passenger compartment.

ZINCLAD ROCKER PANELS—plus galvanizing of all main underbody members guard these vital parts against rust and corrosion. Zinc-rich primer coating also protects under-surfaces of wheel wells and other important areas.

SPECIFICATIONS

Your investment in a new Ford Fairlane will bring high returns: in sheer driving fun—and in dramatic relief from the bother and expense of frequent car servicing. Routine maintenance for Ford cars has now been reduced to just two stops a year, or one every 6,000 miles. The cars from Ford for '63 offer this modern convenience—and for you, this means more time to live the lively life.

In 1963, Ford continues to set new standards of automotive excellence with continuous inspections, tests and evaluations throughout every phase of design, production and assembly. The result is a quality-crafted Ford—a car for your lasting pleasure now, and for many, many miles to come.

ENGINES: 101-hp Fairlane Six—170 cu. in. displ.; 3.50" bore x 2.94" stroke; 8.7 to 1 comp. ratio; regular fuel; single-venturi carburetor; manual choke; oil capacity, with filter change, 4 qt.

145-hp Challenger V-8 (optional)—221 cu. in. displ.; 3.50" bore x 2.87" stroke; 8.7 to 1 comp. ratio; regular fuel; 2-barrel carburetor; automatic choke; oil capacity, with filter change, 4.5 qt.

164-hp Challenger 260 V-8 (optional)—260 cu. in. displ.; 3.80" bore x 2.87" stroke. Other specifications same as Challenger V-8 above.

ENGINE FEATURES: For greater economy and longer life, Fairlane engines have short-stroke, low-friction design; Wedge-Type combustion chambers; aluminized intake and exhaust valves on V-8's; hydraulic lifters for automatic valve adjustment; integrally cast cylinder head and intake manifold on Six, alternate intake and exhaust ports on V-8's; 3-ring aluminum-alloy pistons with full-chromed top ring; precision-molded crankshaft with four main bearings; rotor-type oil pump; Super-Filter 24,000-mile (Six), 30,000-mile (V-8), dry-type air cleaner element; full-pressure lubrication system with Full-Flow disposable-type oil filter; 6,000-mile oil and filter change interval; high-capacity, 36,000-mile replaceable-element fuel filter; pressurized cooling system with 190° thermostat; 36,000-mile or 2-yr. engine coolant-antifreeze (available—installed in production); 12-volt electrical system; weatherproof ignition with air-cooled distributor points; 18-mm. Turbo-Action spark plugs; 54-plate, 40 amp-hr battery; fully aluminized muffler and tailpipe; positive crankcase emission control. All engines electronically mass-balanced for extra smoothness.

CLUTCH AND MANUAL TRANSMISSIONS: Non-centrifugal clutch with Six; semi-centrifugal clutch with V-8's. Face diameter 8½" with Six, 10" with V-8's: 3-speed Manual Transmission (standard with 6 and 8). Anti-friction bearings throughout Standard "H" shift pattern with lever on steering column. Ratios (to 1): 1st 3.29, 2nd 1.83, direct 1.00, rev. 4.46 (6 cyl. only). Overdrive (optional with V-8's) conventional 3-speed transmission plus an automatic 4th gear which cuts in above 28 mph, cuts out below 21 mph (approx.). Downshift to direct by flooring accelerator. Lockout control on instrument panel. Ratios (to 1): 1st 2.80, 2nd 1.69 direct 1.00, overdrive .70, rev. 3.80.

FORDOMATIC DRIVE (optional all engines except Six in wagons): Simplified design, lightweight cast-aluminum construction, minimum servicing. Torque converter in combination with planetary gear set. Vacuum-controlled throttle valve for smoothness, minimum servicing. Gear ratios (to 1): low 1.82, direct 1.00, reverse 1.73; converter (stall) 2.4 (Six), 2.14 (221 V-8), 2.05 (260 V-8). In "D" range gives brisk, smooth starts in low. Effective engine braking in "L" position. Selector lever and quadrant on steering column, sequence P-R-N-D-L.

REAR AXLE: Semi-floating type with offset hypoid gears. Straddle-mounted drive pinion with V-8's. Induction-hardened forged shafts with permanently lubricated wheel bearings. Axle Ratios (to 1): 3-speed—3.50 (3.25 opt.) with Six; 3.25 (3.50 opt.) with V-8's. Overdrive—V-8's only. 3.50 (3.80 opt.). Fordomatic Drive—3.50 (3.25 opt.) with Six; 3.25 (3.00 or 3.50 opt.) with 221 V-8's; 3.00 (3.25 or 3.50 opt.) with 260 V-8.

FRONT SUSPENSION: Angle-Poised Ball-Joint type with coil springs mounted on upper arms. 36,000-mile lubrication intervals. Strut-stabilized lower arms. Built-in anti-dive control. Internally mounted hydraulic double-acting shock absorbers with rebound cutoff. Link-type, rubber-bushed ride stabilizer. Tapered roller wheel bearings with 24,000-mile lubrication interval.

REAR SUSPENSION: Longitudinal, semi-elliptic leaf springs with rubber-bushed front mounts and compression-type rear shackles, giving variable-rate characteristics for softer, more levelized ride. Asymmetrical design with rear axle located forward from center of springs for anti-squat control on take-off. Spring tip liners between all but top leaves—no lubrication required. Diagonally mounted hydraulic double-acting shock absorbers.

STEERING: Low-friction, recirculating ball-type steering gear for easy steering. Flexible steering shaft coupling dampens road shock, vibration. Linkage system lubricated for 36,000 miles. Over-all steering ratio 27.8 to 1. Optional power steering ratio 25 to 1. Turning diameter 39.5 ft.

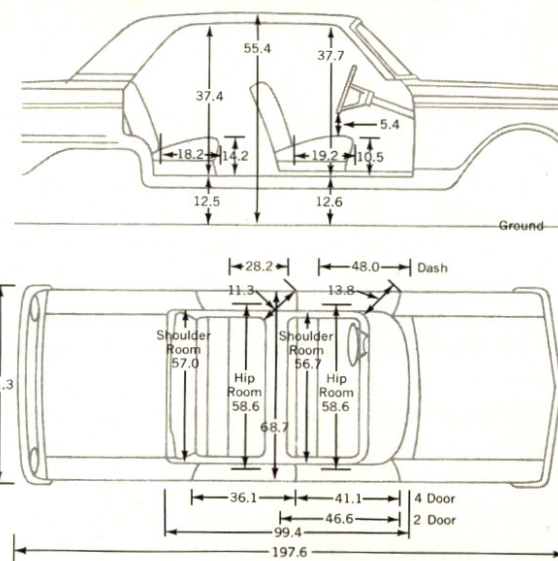
BRAKES: Self-adjusting, double-sealed, self-energizing hydraulic brakes. Brakes adjust automatically when applied while car is moving backwards. 10-inch composite drums are grooved for extra cooling. Offset "T" handle parking brake at left of steering column. Total lining area 154 sq. in. on sedans, 194 sq. in. on wagons.

TIRES: Soft-Tread design, blackwall, tubeless with Tyrex Rayon cord, safety-type rims. Sedans: Six—with 3-spd. 6.50 x 13, with Fordomatic or air conditioner 7.00 x 13; V-8's—with all transmissions 7.00 x 13, with air conditioner 7.00 x 14. Wagons: All models—7.00 x 14. Spare wheel and tire in luggage compartment of sedans; cargo area behind right-hand wheelhousing of wagons.

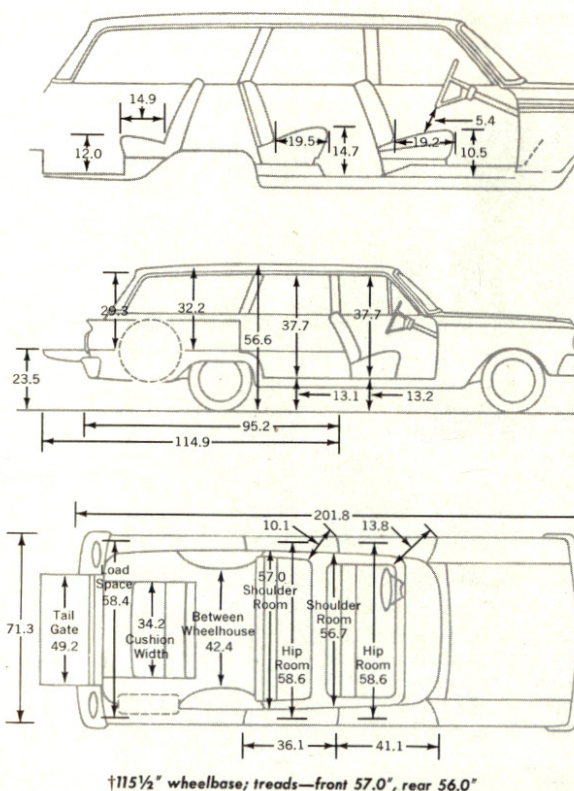
PRICES: All Optional Equipment and Accessories, illustrated or referred to as options, optional or available in this catalog are at extra cost. For the price of the Fairlane with the equipment you desire, see your Ford Dealer.

The specifications contained herein were in effect at the time this catalogue was approved for printing. However, because of continuing product improvements and refinements Ford Motor Company of Canada, Limited reserves the right to change specifications of design at any time, or discontinue models without notice and without incurring obligation. Mileage figures quoted herein refer to normal driving conditions.

SEDAN AND HARDTOP DIMENSIONS†



STATION WAGON DIMENSIONS†



Ford Motor Company of Canada, Limited



The friendly home of Ford
GELHORN MOTORS LTD.
2000 MAIN ST., WINNIPEG ED 4-4325
WESTERN CANADA'S EXCLUSIVE
24 HOUR A DAY DEALERSHIP