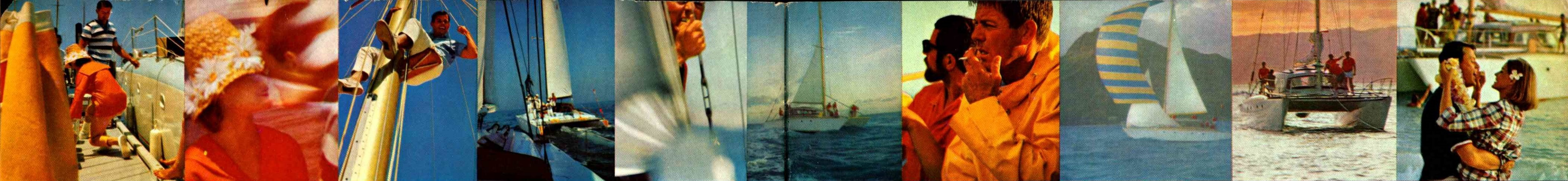


# BUICK '65







The Riviera by Buick

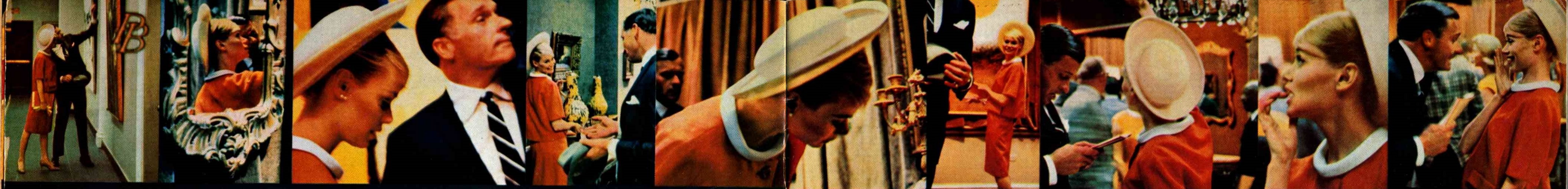
*Some of the equipment shown on the cars illustrated is optional at extra cost. For a complete listing of such equipment see pages 26 and 27 of this catalogue.*

Think of a car that's loaded with action, classic in line, agile as a cat, and luxurious beyond belief. The car you're thinking about is the Riviera by Buick. Here's a unique blend of blazing performance (325 hp) and solid roadability that sets the Riviera apart from all other cars. In other words, it's a car that might be equally at home on the track as on the road. (We prefer you stick to the road, however). The best way to illustrate Riviera performance is with a drive. So, imagine yourself seated behind the wheel. Notice that the Turbine Drive selector is in a console between the bucket seats. Set it for "Drive" and step on it. Feel her dig in and go. Now round a sharp corner and experience that "glued to the road" feeling. It's uncanny! Notice how Riviera seems to smooth the pavement under you. But why do we go on this way? The real thing is waiting for you at your Buick dealer's. Ask for the keys.

## The Riviera by Buick

**RIVIERA REGULAR EQUIPMENT**—Super Turbine Transmission; 325-Horsepower Wildcat Engine; Easy Power Steering; Power Brakes; Windshield-Washer; 2-Speed Electric Wipers; Back-Up Lights; Glare-proof Mirror; Parking Brake Signal Light; Safety Buzzer; Map Light; Electric Clock; Tilt Steering Wheel; Automatic Trunk Light; License Plate Frame; Aluminum Front Brake Drums; Step-on Parking Brake; Instrument Panel Safety Pad; Directional Signals; Full 15-inch Wheels; Trip Mileage Indicator; Glove Compartment Light; Smoking Set; Rear Seat Ashtrays and Lighter; Dual Sun Shades; Magic Mirror Finish; Dual Arm Rests—Front and Rear; Door-operated Rear Passenger Area Courtesy Light; Full Carpeting; Dual Horn; Foam-Padded Bucket Seats—Front and Rear; Crank-Operated Window Vents; Centre Console; Self-adjusting Brakes; Double Door Release Handles; Console-Mounted Selector Lever; Dual Exhausts; Delcotron Generator; 6,000 Mile Lubed Front Suspension System; Instrument Panel Lower Safety Pad; Walnut Paneling on Trim and Instrument Panel.





The Buick Electra 225 Sport Coupe

*Some of the equipment shown on the cars illustrated is optional at extra cost. For a more complete listing of such equipment see pages 26 and 27 of this catalogue.*



## The Buick Electra 225

When you've arrived, there's no harm in letting other people know it. Quite frankly, this is the effect the Buick Electra 225 is designed to produce. It's a true luxury car, inside and out. It's big, it's sleek, and it rides like a dream. It has the look of solid success. The interior is pure delight. But over and above what it does for your ego, the Buick Electra 225 is an exceedingly practical investment. For one thing, it costs far less than some other luxury cars with no appreciable difference in value. It includes as regular equipment many items that are extra cost on lesser cars—Super Turbine automatic transmission, power brakes, power steering, even power windows and power seat on some models. And performance is in keeping with the overall impression of elegance. The 325-hp Wildcat V8 engine lets you cruise effortlessly at turnpike speeds yet provides plenty of instant response just any time you need it.





The Buick Electra 225 4-Door Hardtop



The Buick Electra 225 4-Door Sedan



The Buick Electra 225 Convertible

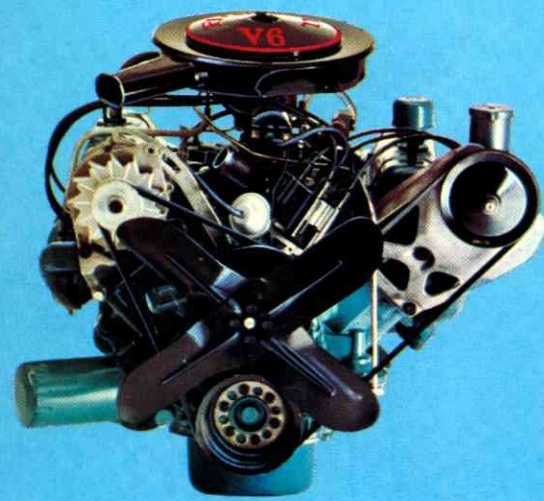
Like a rich fabric upholstery? Try this one on for size. It's Brahmin cloth in the Electra 225 Sport Coupe, 4-Door Hardtop and 4-Door Sedan. It feels wonderful to the touch, it delights the eye and stands up to the hardest wear. The trim is contrasting leather-grained vinyl.

**ELECTRA 225 REGULAR EQUIPMENT**—325-Horsepower Wildcat 445 Engine; Super Turbine Transmission; Deluxe Steering Wheel; Easy Power Steering; Power Brakes; Dual-Speed Electric Windshield Wipers; Foam Padded Seats—Front and Rear; Electric Clock; License Plate Frame; Windshield Washer; Automatic Trunk Light; Crank-Operated Front Window Vents; Step-on Parking Brake; Two-way Power Seat (Convertible Only); Smoking Set; Instrument Panel Safety Pad; Trip Mileage Indicator; Aluminum Front Brake Drums; Map Light; Rear Seat Ashtrays and Lighter; Safety Buzzer; Dual Sunshades; Magic Mirror Finish; Door-Operated Courtesy Lights; Dual Arm Rests—Front and Rear; Glove Compartment Light; Wheel Covers; Dual Horns; Full 15-inch Wheels; Directional Signals; Full Carpeting; 6000 Mile Lube Front Suspension System; Delcotron Generator; Glareproof Mirror; Self-adjusting Brakes; Power Windows (Convertible Only); Back-up Lights; Parking Brake Signal Light; Centre Console (with Bucket Seats) and outside Rearview Mirror on Convertible only.

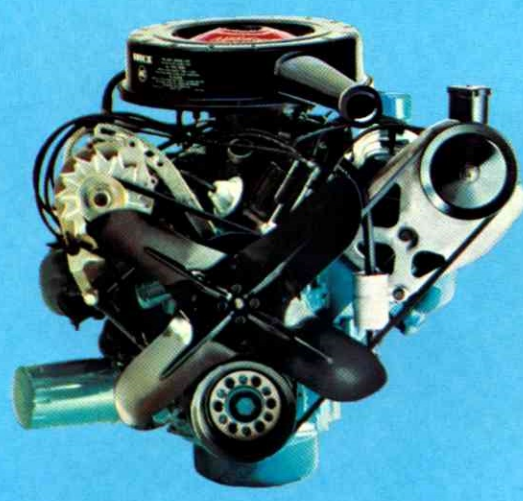
*Some of the equipment shown on the cars illustrated is optional at extra cost. For a more complete listing of such equipment see pages 26 and 27 of this catalogue.*



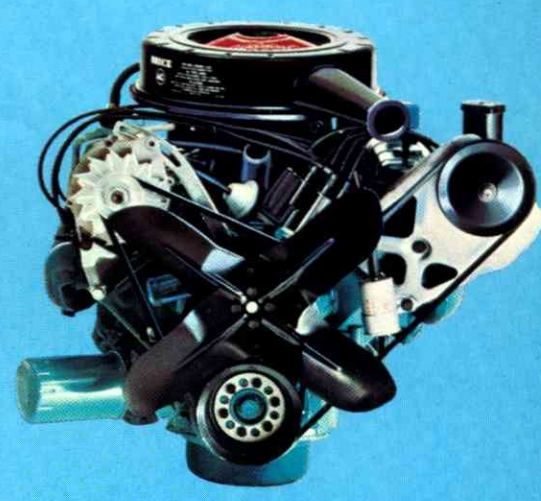
THE ACCENT'S ON ACTION! A car doesn't really come alive until you turn the key to start the engine. This is the great moment in owning a Buick. With any one of Buick's six engines and four transmissions; you've bought yourself a piece of action that just won't quit. And remember that along with its reputation for performance, Buick has been steadily building a reputation for economy—three winners out of four entries in the last Mobil Economy Run—the result of steady improvement in engine design and dramatic new automatic transmission efficiency. HERE'S THE LINE-UP:



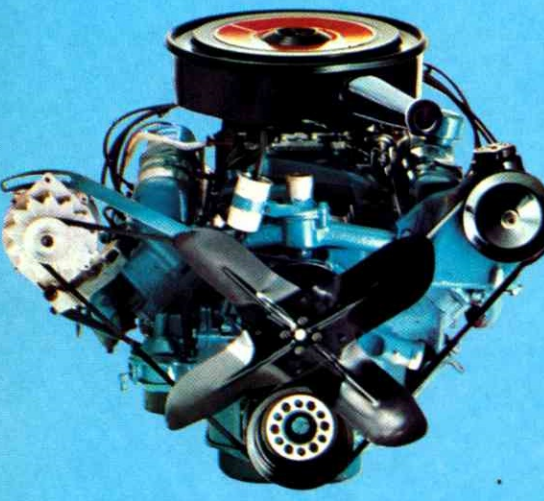
**FIREBALL V6**—a 225 cubic-inch engine that turns up 155 hp. Smart performance. Great regular gas economy. Available on Special, Special Deluxe and Skylark. Team it with Super Turbine 300 (optional), regular 3-Speed Synchro-Mesh or 4-Speed Synchro-Mesh transmission (optional).



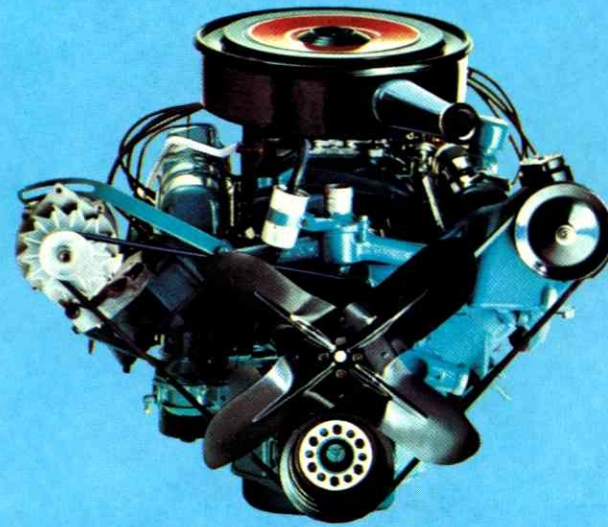
**WILDCAT 310**—a 300 cubic-inch V8 rated at 210 hp. A Mobil Economy Run winner with spirited performance. Available on Special, Special Deluxe, Skylark 8-cylinder models, regular equipment on LeSabre and Skyroof Sportwagons 8-cylinder models. Goes with Super Turbine (optional), regular 3-Speed Synchro-Mesh and 4-Speed Synchro-Mesh (optional) transmissions, except on LeSabre.



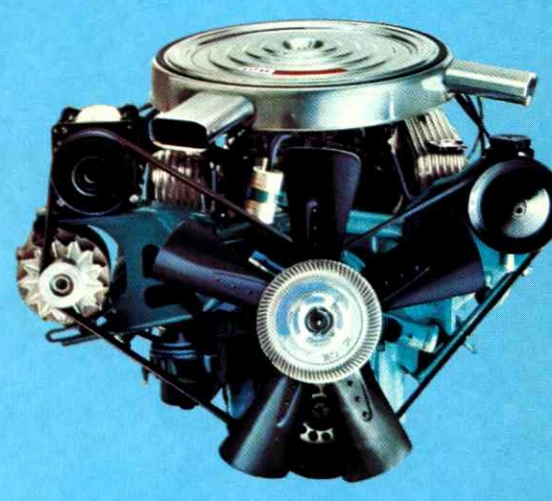
**WILDCAT 355**—300 cubic inches of get-up-and-go that puts out 250 hp. This 4-barrel carburetor V8 is available on Special, Special Deluxe, Skylark, Sportwagons and LeSabre. Goes with Super Turbine (optional) or with the regular 3-Speed Synchro-Mesh or 4-Speed Synchro-Mesh (optional) transmissions (except LeSabre).



**WILDCAT 445**—One of the world's great performers. A 401 cubic-inch V8 that scores 325 hp. Four-barrel carburetor. Regular equipment on Wildcat, Electra 225 and Riviera. Available with Super Turbine 400 (standard on Electra 225, Wildcat and Riviera).



**WILDCAT 465**—Performance and then some! A 425 cubic-inch V8 that's rated at 340 hp. Four-barrel carburetor. Optional on Riviera, Electra 225 and Wildcat. Teamed with Super Turbine 400 only (regular equipment on Electra 225, Wildcat and Riviera).



**SUPER WILDCAT**—Buick's mightiest V8! Twin four-barrel carburetors and a 425 cubic-inch displacement give this magnificent engine a full 360 hp. Optional on Riviera, Electra 225, and Wildcat. Use with Super Turbine (regular equipment on Electra 225 and Riviera).

## A FEW OF THE THINGS THAT MAKE BUICK WORTH MORE



### 1. DIE-CAST GRILLES

All but one series of Buicks (LeSabre, with extruded aluminum) has a distinctive heavy die-cast grille. This adds plus value to Buick in terms of appearance, ruggedness and durability. It gives your Buick a real quality look that gives you more satisfaction when you drive and returns more value at resale time.



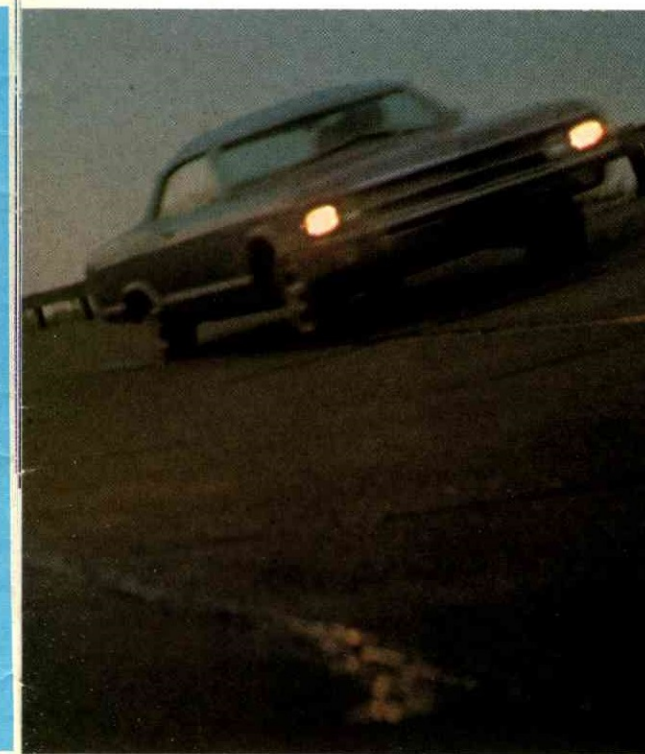
### 2. TEMPERED PLATE GLASS BACK WINDOWS IN CONVERTIBLES

Buick LeSabre, Wildcat and Electra 225 convertibles give you permanent clear vision to the rear with back windows of plate glass. What's more, you lower the top in the same fashion as before—with the window in place. Here's an important new advance in convertibles that adds to your driving safety and saves you money too, on replacements.



### 3. LOWEST TRANSMISSION TUNNEL

When you get into a Buick LeSabre, Wildcat or Electra 225 you notice one important difference right away. The big transmission hump you find in most cars is a mere ripple in a Buick. This is the result of a unique forward engine-transmission mounting system and a 2-piece drive shaft. In practical terms it means that a Buick is one of the few cars that can actually seat six people comfortably. Give it the family test and see if you don't agree.



### 4. TREMENDOUS STABILITY

No production car is more thoroughly engineered to hold the road than a Buick. Its centre of gravity is low; its roll centre is high. What this means is that a Buick can take turns at speeds that most cars couldn't even attempt. This is not to suggest that Buick is built for the track. It's only one measure of the extra safety engineering that goes into every Buick. You'll like the feeling of assurance it gives you every time you take the wheel.



### 5. NEW CROSSFLOW RADIATOR

Every LeSabre, Wildcat, Electra 225 and Riviera now uses a new cross-flow radiator that increases engine cooling efficiency by exposing all the coolant in the radiator to the airflow pattern created by the air intakes and fan. This increased cooling efficiency is particularly important at low speeds and at idle—the type so frequently encountered in congested city traffic. Promotes engine efficiency and longer life, too.



### 6. NEW LONG-LIFE EXHAUST SYSTEMS

Buick's mufflers on all series are made of heavy-gauge aluminized steel for long life and extra safety. Resonators on upper series Buicks are made of stainless steel. In addition, exhaust pipes are double-laminated for extra life and greater operation. Here's an extra margin of Buick quality that saves you money in replacement costs and adds to your driving safety as well.





The Buick Wildcat Sport Coupe

*Some of the equipment shown on the cars illustrated is optional at extra cost. For a more complete listing of such equipment see pages 26 and 27 of this catalogue.*

## The Buick Wildcat

Style and flair won't make a car go any faster, run any smoother or ride any softer, but it certainly does a lot for the man behind the wheel. There's a lot of pardonable satisfaction in owning a car that makes others take a second look. We think the Wildcat for 1965 is this kind of car. It's obvious that we didn't design it to blend into the landscape. It's a standout, and any red-blooded boy or girl ought to love it. But enough said about good looks; what about such items as performance, ride, handling and all-around luxury? Suffice it to say that the Wildcat excels in all departments, particularly in performance. A 401 cubic-inch, 325-horsepower V8 is regular equipment, but if you're exceptionally action-minded you can choose options all the way up to 360 hp. Pretty wild! See for yourself how appropriately named this car is.

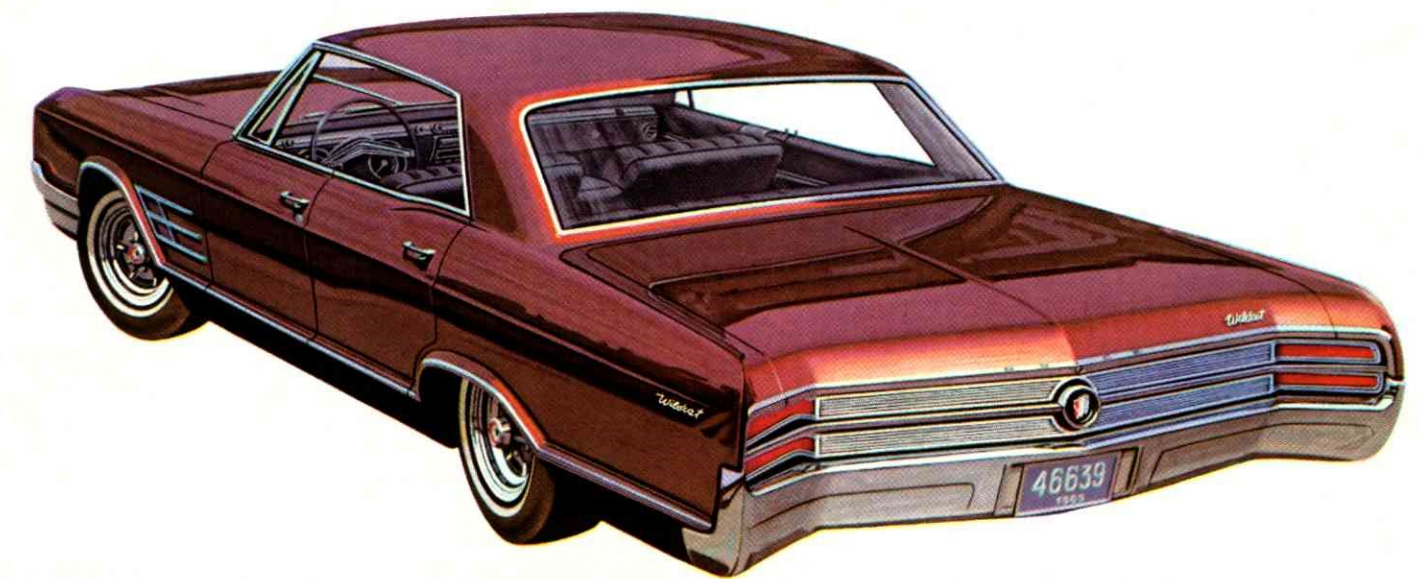




The Buick Wildcat Convertible



The Buick Wildcat 4-Door Sedan



The Buick Wildcat 4-Door Hardtop

How's this for class? It's the interior of either the Wildcat Custom Sport Coupe or Custom Convertible. Bucket seats... centre console... soft carpeting... the works! By the way, if you like to track the performance of the great Wildcat engine, you can have a tachometer. Puts a little more zing in your driving. Also on and in the console are Super Turbine selector, storage space and smoking set. No wonder the Wildcat's wild.

Some of the equipment shown on the cars illustrated is optional at extra cost. For a more complete listing of such equipment see pages 26 and 27 of this catalogue.

**WILDCAT REGULAR EQUIPMENT**—Super Turbine 400 Transmission; 325-Horsepower Wildcat 445 Engine; Aluminum Front Brake Drums; Electric Windshield Wipers; Step-on Parking Brake; Upper Instrument Panel Safety Pad; Directional Signals; Glove Compartment Light; Smoking Set; Rear Seat Ashtrays; Magic Mirror Finish; Dual Arm Rests—Front and Rear; Carpeting; Wheel Covers; Dual Horns; Full 15-inch Wheels; Crank-Operated Front Window Vents; 6000 Mile Lubed Front Suspension; Delcotron Generator; Self-adjusting Brakes; Front-door operated Courtesy Light; Dual Sunshades; Map Light; Instrument Panel Clock; Parking Brake Warning Light; Luggage Compartment Light; Bucket Seats; Console and Tachometer on 2-Door Hardtop and Convertible.





The Buick LeSabre 4-Door Sedan

*Some of the equipment shown on the cars illustrated is optional at extra cost. For a more complete listing of such equipment see pages 26 and 27 of this catalogue.*

## The Buick LeSabre

The single, most-compelling reason for owning a LeSabre is that it's a Buick. Not that we mean the bright chrome name on the hood is worth the price alone, even considering the impression it makes on your friends. It's what the name Buick stands for that makes LeSabre such an exceptional value. Consider, if you will, the luxurious, cushiony ride that's traditionally associated with Buicks—and the interior spaciousness and luxury. Consider the extra quality of the materials and workmanship. Consider the sparkling Wildcat V8 performance and the smoothness of optional Super Turbine automatic transmission. But now, for a change of pace, look at another aspect of the LeSabre. It's extraordinarily economical to own and operate. A 1964 LeSabre topped its class (full-size eights) in gas mileage in the Mobil Economy Run, and the price of a LeSabre is surprisingly modest. If you'd like to avail yourself of all the good things that go with owning a Buick, see how easy it is with a LeSabre.





The Buick LeSabre Sport Coupe



The Buick LeSabre 4-Door Hardtop



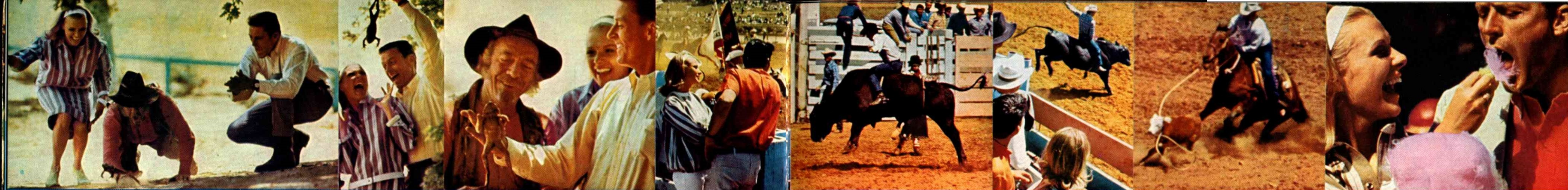
The Buick LeSabre Convertible

Can you get a life-size picture of yourself relaxing in the luxury of this LeSabre interior? Not hard to do. Just go down to your Buick dealer and slip into a LeSabre Custom 4-Door Hardtop or Custom 4-Door Sedan. The soft, silky fabric is Bimini cloth set off by bold contrasting accents of leather-grained vinyl. The rich carpeting is keyed to the over-all color scheme. Surprising what these Buick stylists can do to a LeSabre when they put their minds to it.

**LeSABRE REGULAR EQUIPMENT**—3-Speed Synchro-Mesh Transmission; 210-Horsepower Wildcat 310 Engine; Finned Brake Drums; Electric Windshield Wipers; Step-on Parking Brake; Instrument Panel Safety Pad; Directional Signals; Glove Compartment Light; Dual Arm Rests—Front and Rear; Front Door-Operated Courtesy Light; Full 15-inch Wheels; Dual Horns; Crank-Operated Front Window Vents; 6000 Mile Lubed Front Suspension System; Delcotron Generator; Self-adjusting Brakes; Full Carpeting; Map Light; Side-View Mirror on Convertible; Paddle Type Door Handles on 2- and 4-Door Hardtops and 4-Door Sedans; Foam Padded Rear Seat.

*Some of the equipment shown on the cars illustrated is optional at extra cost. For a more complete listing of such equipment see pages 26 and 27 of this catalogue.*





The Buick Skyroof Custom 2-Seat Sportwagon

*Some of the equipment shown on the cars illustrated is optional at extra cost. For a more complete listing of such equipment see pages 26 and 27 of this catalogue.*



The Buick Special Deluxe 2-Seat Station Wagon

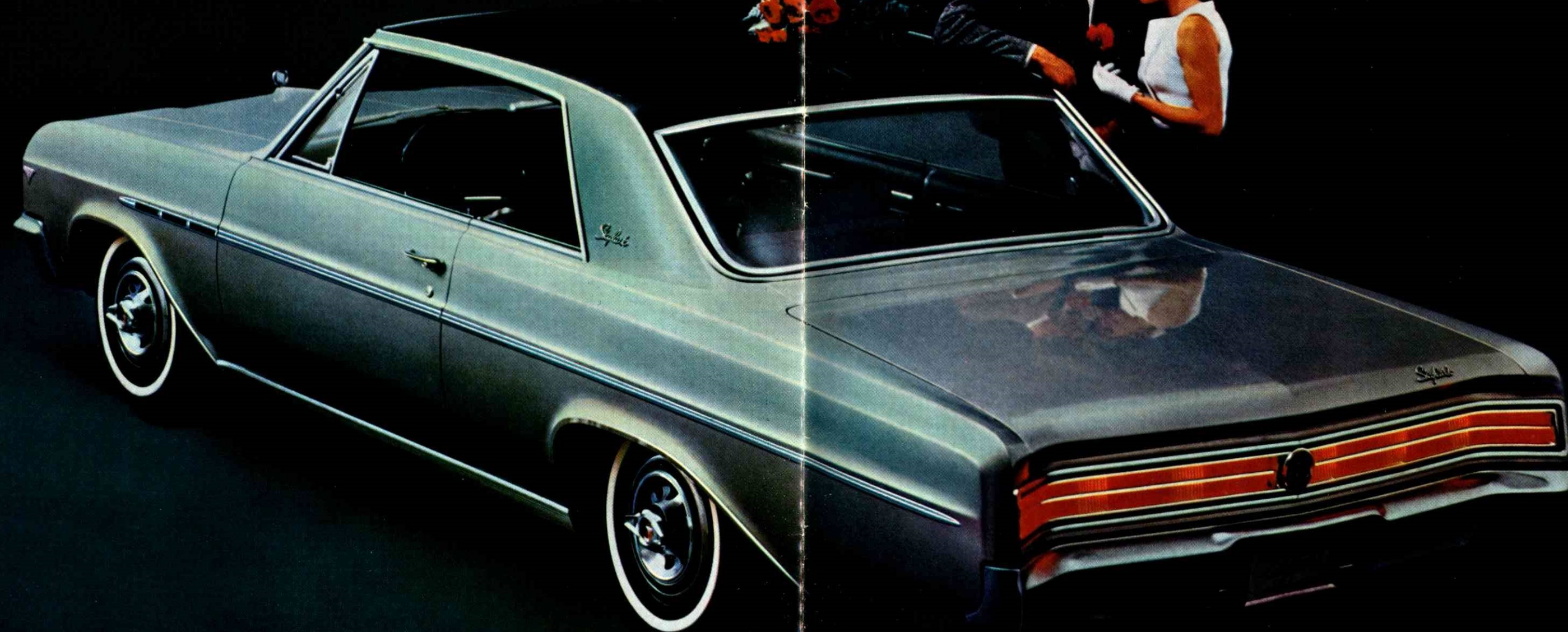


The Buick Special 2-Seat Station Wagon

## The Buick Station Wagons

The beauty of Buick station wagons is just that—they're beautiful! Unlike the common garden variety of wagon, Buick wagons are so handsome you'd be proud to drive one to the opera. Highlighting the selection are the four Sportwagons with the unique glass Skyroof. These are special shaded glass panels set in the elevated roof that permit forward-facing, third-seat passengers a look not only out but *up*. Incidentally, in the Sportwagon series there is a custom 2-seater and 3-seater and a regular 2-seater and 3-seater. Every model packs better than 96.5 cubic-feet of cargo space. The Special series features two models, deluxe and regular, both 2-seaters with nearly 90 feet of cargo space. The Sportwagons come with 210-hp V8 as regular equipment while in the Specials you have your choice of V6 or two V8 engines. In all models loading is uncommonly easy with a back window that rolls down into the tailgate which in turn drops down flat and flush with the cargo deck. If you're wagon-minded, give a lot of thought to Buick this year.





The Buick Skylark Sport Coupe

*Some of the equipment shown on the cars illustrated is optional at extra cost. For a more complete listing of such equipment see pages 26 and 27 of this catalogue.*



The Buick Skylark Thin Pillar Coupe



The Buick Skylark Convertible

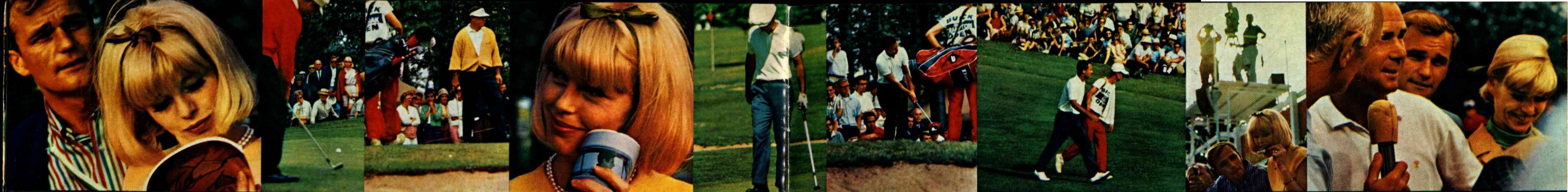


The Buick Skylark 4-Door Sedan

## The Buick Skylark

Here's the answer to people who demand the luxury of a big car in a slightly smaller size—the Buick Skylark. Surprising, really, how many of the amenities people associate with big cars you'll find in the Skylark. It's roomy. Hooray! It rides very smoothly. Bravo! And it's styled inside and out to appeal to your sense of the opulent. Capital! But there's another side to the coin. With either the V6 or V8 engines the gas economy is most gratifying, and the addition of automatic Super Turbine transmission (optional) doesn't change the picture. And don't forget, Bucket Seats are standard in the Convertible. One thing that's almost certain to please you is the Skylark's amazing manoeuvrability. It won't make congested traffic pleasant but it will make it manageable. You may get home five or ten minutes earlier of an evening. All in all, the Skylark is a car that takes very little getting used to—something like a nicely furnished apartment. If the choice of cars pulls you in two directions, we urge you to take the middle road—Buick Skylark.





The Buick Special Deluxe 4-Door Sedan

*Some of the equipment shown on the cars illustrated is optional at extra cost. For a complete listing of such equipment see pages 26 and 27 of this catalogue.*

## The Buick Special

We don't make cheap cars—that's for other people. But we do make economical cars, and a case in point is the Buick Special. Bear in mind, first of all, that the Special is a *Buick*—with all the quality, reliability and superb engineering that the name implies. Now, consider that the purchase price of a Buick Special is surprisingly modest, and the results of last year's Mobil Economy Run nailed down our claims to splendid gasoline mileage with either V6 or V8 (*and* automatic transmission). You may be concerned about upkeep. Don't be. The Buick Special has a full measure of built-in dependability, and it's so designed that when service is necessary it's relatively easy and economical. Take account, too, of the Special's full six-passenger roominess, large trunk, excellent ride, and agile handling. The interiors here are nicely appointed with just a dash of sportiness. If you're a little price-conscious but you still don't want to settle for anything less than a Buick, we heartily recommend the Special. We built it for people like you.





The Buick Special 4-Door Sedan



The Buick Special Thin Pillar Coupe



The Buick Special Convertible

We don't confuse economy with austerity. The Special is modestly priced but you'd never know it by looking at the interior. Here's an example: the Buick Special 4-Door Sedan beautifully trimmed in Balmore cloth and leather-grained vinyl. We think you'll be so proud of it you'll want to invite friends to drop in.

**BUICK SPECIAL REGULAR EQUIPMENT**—3-Speed Synchro-Mesh Transmission; Electric Windshield Wipers; Directional Signals; Dual Sun Shades; Ashtray; Cigar Lighter; Magic Mirror Finish; Instrument-Panel Safety Pad Special Deluxe only; Carpets Special Deluxe only and Special convertible with bucket seats; Dual Arm Rests—Front and Rear sedans only; Dual Horns; Front Door-Operated Courtesy Lights; Self-Adjusting Brakes; 6,000 Mile Lube Front Suspension; Delcotron Generator; Plunger-type Door Locks; Step-on Parking Brake; 14-inch Wheels; Glove Box Lamp.

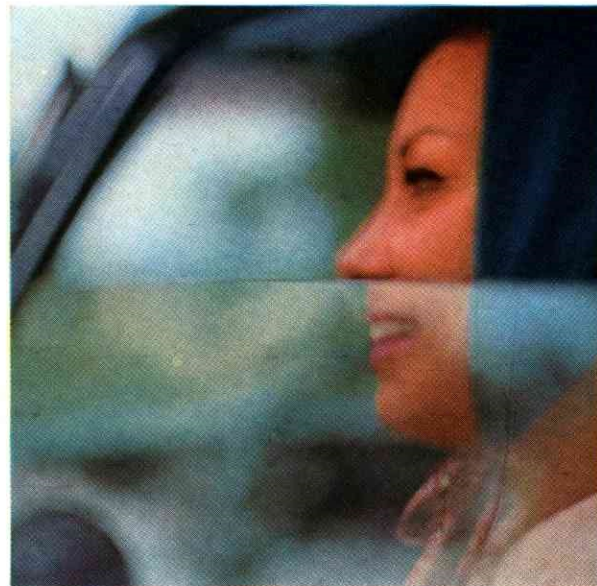
*Some of the equipment shown on the cars illustrated is optional at extra cost. For a complete listing of such equipment see pages 26 and 27 of this catalogue.*



# OPTIONS AND ACCESSORIES YOU MAY WANT TO ADD TO YOUR BUICK



**POWER STEERING**—Easy driving made even easier. Optional on Special, Special Deluxe, Skylark, Sportwagons, LeSabre and Wildcat. Regular on Electra 225 and Riviera.



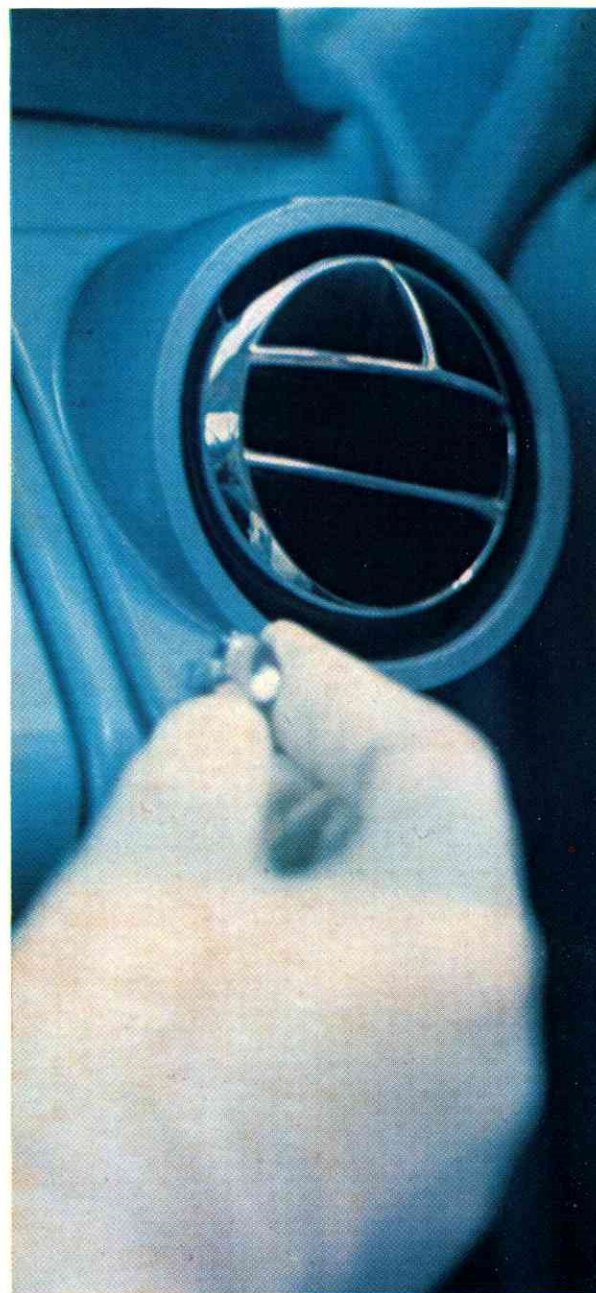
**POWER WINDOWS**—Push a button and down they go—or up. Optional on Special Deluxe, Skylark, Sportwagons, LeSabre, Wildcat, Electra 225 and Riviera. Regular on Electra 225 Convertible.



**POWER BRAKES**—Stopping's as easy as going. Optional on Special, Special Deluxe, Skylark, Sportwagons, LeSabre and Wildcat. Regular on Electra 225 and Riviera.



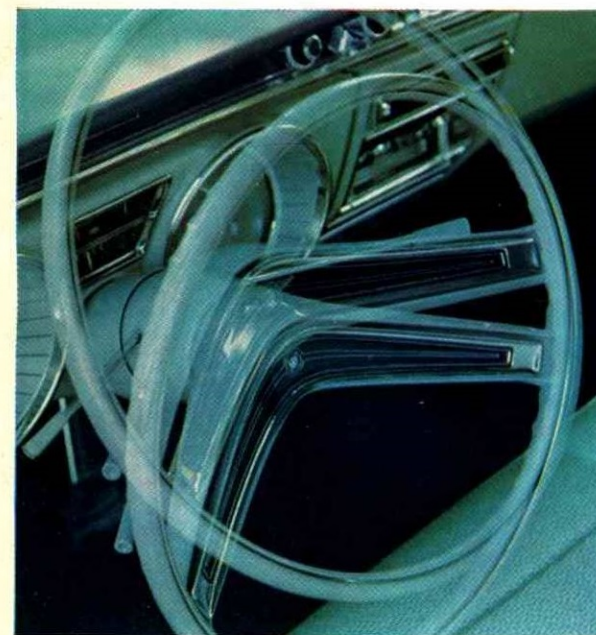
**POWER SEAT**—Take your choice—4-way or 6-way. Four-way seat optional on Special, Special Deluxe, Skylark, Sportwagons, LeSabre, Wildcat, Electra 225 and Riviera. Six-way seat optional on LeSabre, Wildcat and Electra 225 only. Electra 225 Convertible comes equipped with 2-way power seat.



**AIR CONDITIONER**—Complete comfort in any weather. Optional on LeSabre, Wildcat, Electra 225, and Riviera.



**HI-FIDELITY RADIO**—Instant warm-up, glorious tone in any one of Buick's three fine radios. Optional on Special, Special Deluxe, Skylark, Sportwagons, LeSabre, Wildcat, Electra 225 and Riviera. FM available, too, on LeSabre, Wildcat, Electra 225 and Riviera only.



**TILT STEERING WHEEL**—Locks into any one of seven positions to suit your driving comfort. Optional on LeSabre, Wildcat and Electra 225. Regular on Riviera.



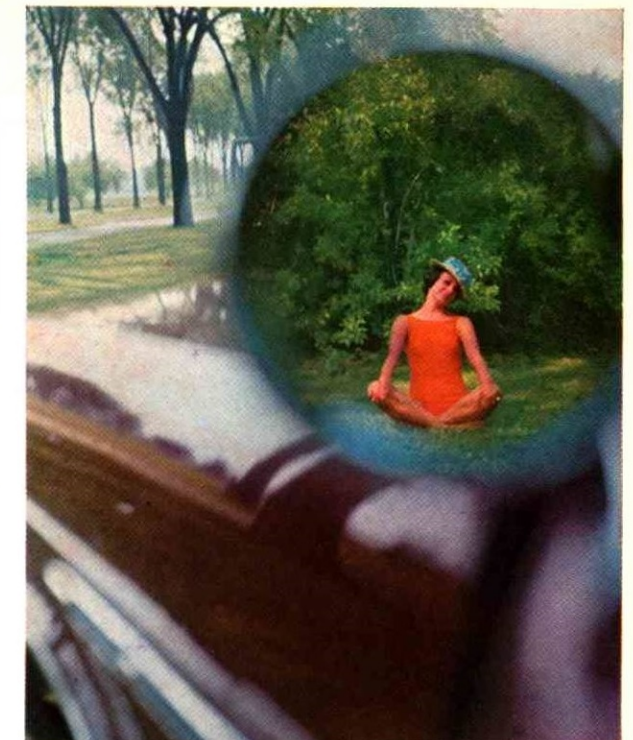
**AUTOMATIC TRUNK RELEASE**—Pull a lever in the glove compartment—trunk lid pops open. Optional on LeSabre, Wildcat, Electra 225 and Riviera.



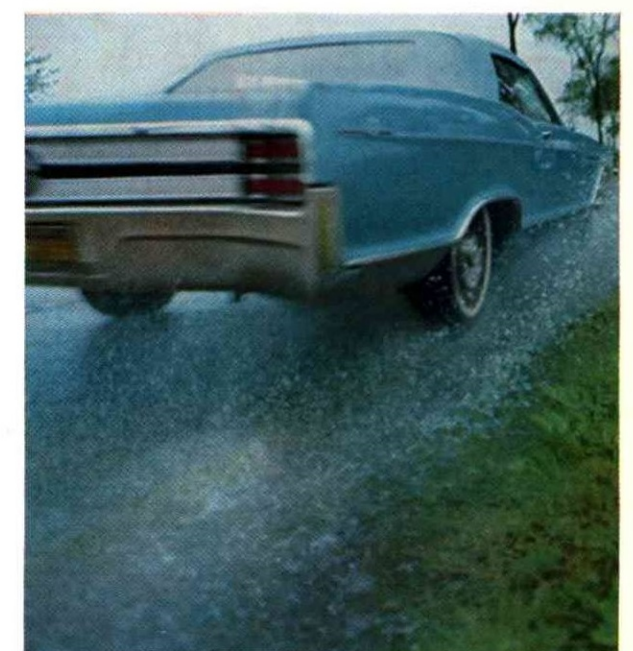
**ELECTRO-CRUISE**—Take your foot off the accelerator—speed is maintained automatically. Optional on LeSabre, Wildcat, Electra 225, and Riviera only.



**CORNERING LIGHTS**—Illuminate the area to the side of your Buick as you turn. Optional on LeSabre, Wildcat and Electra 225 only.



**REMOTE CONTROL MIRROR**—Adjust the side view mirror without even opening the window. Available on Special, Special Deluxe, Skylark, Sportwagons, LeSabre, Wildcat, Electra 225 and Riviera from your Buick dealer.



**POSITIVE TRACTION DIFFERENTIAL**—You go in mud, snow, ice—positive traction feeds the power to the gripping wheel. Optional on Special, Special Deluxe, Skylark, Sportwagons, LeSabre, Wildcat, Electra 225 and Riviera.

## ...and don't forget...

- 4-speed transmission • Super Turbine automatic transmission • Power door locks • Whitewall tires • Custom side moulding • Station wagon luggage rack • Side view mirror • Back-up lights • Four-note horn • Tinted glass • Electric clock • Tachometer • Windshield washer • All Buick models may be ordered without front seat belts or without heater-defroster at reduced cost
- FOR A COMPLETE LISTING OF BUICK OPTIONS AND ACCESSORIES CONSULT YOUR BUICK DEALER



# SPECIFICATIONS: LeSABRE/WILDCAT/ELECTRA 225/RIVIERA

**Engine Lubricating System:** Main bearings, connecting rods and camshaft bearings pressure lubricated. Cylinder walls splash and nozzle lubricated. Normal oil pressure 33 @ 2400 (LeSabre); 40 @ 2400 (Wildcat, Electra 225, Riviera). Full-flow oil filter. Crankcase capacity (refill less filter) 3½ quarts. **Fuel System:** Automatic choke. Mechanical fuel pump. Two-stage gasoline filter with fine filter in fuel tank. Oil impregnated polyurethane air cleaner. Exhaust type intake manifold heat control. LeSabre, Wildcat and Electra 225; 21 gallons, Riviera 16½ gallons. **Engine Cooling:** Pressure system. Choke-type circulation thermostat. Centrifugal water pump. Capacity: 401 cubic inches is 14.5 quarts, 300 cubic inches is 10.3 quarts, Riviera—15.5 quarts with heater. **Exhaust System:** Muffler constructed of corrosion resistant aluminized steel to promote longer life. Dual exhaust available as optional equipment on all models except LeSabre. **Electrical:** Twelve volt electrical system. Five-position starter-ignition switch. **Automatic Transmission:** Super Turbine is a torque converter type featuring a variable pitch stator within the converter; and single planetary gear set. Total oil capacity refill 19 pints. **Propeller Shaft:** Drive shaft is slightly angled to reduce tunnel height in rear seat. Angled sections are connected by a special constant-velocity universal joint that insures vibrationless transfer

## ENGINE

		Horsepower	Torque	Compression Ratio	Displacement (cu. ins.)	Carburetion	Fuel
LeSabre	Wildcat 310	210 @ 4600	310 @ 2400	9.0 to 1	300	2-barrel	Regular
Wildcat	Wildcat 445	325 @ 4400	445 @ 2800	10.25 to 1	401	4-barrel	Premium
Electra 225	Wildcat 445	325 @ 4400	445 @ 2800	10.25 to 1	401	4-barrel	Premium
Riviera	Wildcat 445	325 @ 4400	445 @ 2800	10.25 to 1	401	4-barrel	Premium

## ENGINE OPTIONS

	Horsepower	Torque	Compression Ratio	Displacement	Carburetion	Fuel	Availability
Wildcat 335	250 @ 4800	335 @ 3000	11 to 1	300	4-barrel	Prem.	LeSabre
Wildcat 465	340 @ 4400	465 @ 2800	10.25 to 1	425	4-barrel	Prem.	Wildcat Electra 225 Riviera
Super Wildcat	360 @ 4400	465 @ 2800	10.25 to 1	425	2, 4 bbl	Prem.	Wildcat Electra 225 Riviera

## TRANSMISSIONS

	Regular Equipment	Option (Manual)	Option (Automatic)
LeSabre	3-Speed Synchro.	None	Super Turbine
Wildcat	Super Turbine	None	None
Electra 225	Super Turbine	None	None
Riviera	Super Turbine	None	None

## REAR AXLE RATIOS

	3-Speed Manual Trans.	Super Turbine
LeSabre	3.55	3.08
Wildcat	—	3.07
Electra 225	—	3.07
Riviera	—	3.07

of power to rear axle. Shaft is connected to transmission and rear axle by needle bearing universal joints. **Rear Axle:** Hypoid gears, semi-floating. Transfer of driving forces through rubber-mounted arms connected to frame. **Frame:** Perimeter-type frame except Riviera. **Suspension:** Independent ball-joint front suspension with link-type stabilizer bar. Four-link-type rear suspension (LeSabre, Wildcat, Electra 225). Riviera: three-link-type. Coil springs front and rear. Direct acting hydraulic shock absorbers front and rear. **Brakes:** Hydraulic, self-energizing. Air-cooled finned brake drums front; finned drums rear. Total lining area: 197.32 sq. in. Step-on parking brake operating through rear service brake shoes. Power brakes standard on Electra 225 and Riviera, optional on Wildcat and LeSabre. **Wheels and Tires:** Disc-type wheels. 15 x 5.50 "K" on LeSabre. Size 15 x 6.00, "L"-type flange on Wildcat, Electra 225 and Riviera. Oversize tires optional on Wildcat and LeSabre. Whitewall tires optional on all models. **Steering:** Manual recirculating ball steering standard on LeSabre. Overall ratio: 32.0 to 1. Easy Power Steering standard on Electra 225 and Riviera; mandatory option on Wildcat and on LeSabre. Overall ratio: 20.4 to 1 on LeSabre, 18.5 to 1 on Wildcat and Electra 225, 19.0 to 1 on Riviera. Flexible coupling in power gear screens out vibration.

## EXTERIOR DIMENSIONS

	LeSabre	Wildcat	Electra 225	Riviera
Overall Length	216.9	219.9	223.4	208.0
Overall Width	80.0	80.0	80.0	76.6
Overall Height	55.2	55.2	56.0	53.0
Wheelbase	123.0	126.0	126.0	117.0
Tread—Front	63.0	63.4	63.4	60.4
Tread—Rear	63.0	63.0	63.0	59.0

## INTERIOR DIMENSIONS

	Leg Room Front	Leg Room Rear	Head Room Front	Head Room Rear	Shoulder Room Front	Shoulder Room Rear
LeSabre						
2-Dr. Sport Coupe	42.5	34.9	38.3	37.2	62.2	60.5
4-Dr. Hardtop	42.2	38.5	38.1	37.3	62.3	61.4
4-Dr. Sedan	42.2	39.0	38.9	37.7	62.3	61.4
Convertible	42.5	34.9	38.7	37.5	62.2	53.1

## Wildcat

	Leg Room Front	Leg Room Rear	Head Room Front	Head Room Rear	Shoulder Room Front	Shoulder Room Rear
4-Dr. Sedan	42.2	39.0	38.9	37.7	62.3	61.4
4-Dr. Hardtop	42.2	38.5	38.1	37.3	62.3	61.4
2-Dr. Sport Coupe	42.5	34.9	38.3	37.2	62.2	60.5
Convertible	42.5	34.9	38.3	37.5	62.2	53.1

## Electra 225

	Leg Room Front	Leg Room Rear	Head Room Front	Head Room Rear	Shoulder Room Front	Shoulder Room Rear
4-Dr. Sedan	42.2	40.3	39.6	38.2	62.2	61.1
2-Dr. Sport Coupe	41.8	38.1	38.4	38.1	62.2	60.7
4-Dr. Hardtop	42.2	38.2	38.5	37.7	62.2	60.5
Convertible	41.8	38.1	38.5	37.7	62.1	53.1

## Riviera

	Leg Room Front	Leg Room Rear	Head Room Front	Head Room Rear	Shoulder Room Front	Shoulder Room Rear
2-Dr. Sport Coupe	40.1	34.7	38.0	37.4	56.2	55.8

# SPECIAL/SPECIAL DELUXE/SKYLARK/SPORTWAGON

**Engine Lubricating System:** Main bearings, connecting rods and camshaft bearings pressure lubricated. Cylinder walls splash and nozzle lubricated. Normal oil pressure 33 @ 2400. Full-flow oil filter. Crankcase capacity (refill less filter) 3½ quarts. **Fuel System:** Automatic choke. Mechanical fuel pump. Two-stage gasoline filter with fine filter in fuel tank. Oil-impregnated polyurethane air cleaner. Exhaust-type intake manifold heat control. 16½ gallon fuel capacity. **Engine Cooling:** Pressure system. Choke-type thermostat. Centrifugal water pump. **Exhaust System:** Single muffler for both banks of cylinders is mounted to rear of passenger compartment. Constructed of corrosion resistant aluminized steel to promote longer life. Dual exhaust available as optional equipment on all models equipped with 250-hp V8 engine. **Electrical:** Twelve volt electrical system. Five-position starter-ignition switch. **Automatic Transmission:** Super Turbine is of the torque converter type featuring a variable pitch stator within the converter, and single planetary gear set. Total oil capacity (refill) 8 quarts. **Propeller Shaft:** Solid drive shaft is slightly angled to reduce tunnel height. Shaft is connected to

transmission and rear axle by needle-bearing universal joints. **Rear Axle:** Hypoid gear, semi-floating. Rear wheel bearings permanently lubricated. **Suspension:** Independent ball-joint front suspension. Four-link rear suspension. Coil springs front and rear. Direct-acting hydraulic shock absorbers front and rear. Driving forces from axle to frame are through rubber-bushed rear links. **Frame:** Perimeter-type for greater strength and passenger protection. **Brakes:** Self-adjusting. Air-cooled finned cast iron brake drums front and rear. Total lining area 155.8 sq. in. Parking brake operating through rear service brake shoes. Power brakes optional at extra cost. **Steering:** Manual recirculating ball steering standard. Overall ratio, 28.6 to 1. Power steering optional. Overall ratio 20.9 to 1. **Wheels:** Disc-type wheels. \*Size 14 x 5.00, "J" type flange. White sidewall tires are optional at extra cost.

\*14 x 6.00 wheel with "JK" type flange optional on Special Station Wagons with optional 7.75 x 14 tires.

## ENGINES

	Horsepower	Torque	Compression Ratio	Displacement	Carburetion	Fuel	Availability
Fireball V-6	155 @ 4400	225 @ 2400	9.0 to 1	225	1-barrel	Reg.	All (except Sportwagons)
Wildcat 310	210 @ 4600	310 @ 2400	9.0 to 1	300	2-barrel	Reg.	All
Wildcat 355	250 @ 4800	335 @ 3000	11.0 to 1	300	4-barrel	Prem.	All

## TRANSMISSIONS

	Regular Equipment	Option (Manual)	Option (Automatic)
Special Special Deluxe Skylark	3-Speed Synchro.	4-Speed Synchro.	Super Turbine

## REAR AXLE RATIOS

	3-Speed Manual Trans.	4-Speed Manual Trans.	Super Turbine
Fireball V-6	3.23*	3.23	3.08**
Wildcat 310	3.08	3.23	2.78**
Wildcat 355	3.08	3.23	2.78**

\*Sedans and Coupes; Station Wagons: 3.36; Sportwagons: 3.23.

\*\*Sedans and Coupes; Station Wagons: 3.23; Sportwagons: 3.08.

## DIMENSIONS

	Special Sedan	Special Coupe	Special Convertible	Special Deluxe Sedan	Special Station Wagons*	Skylark Sedan	Skylark Sport Coupe	Skylark 2-Dr. Coupe	Skylark Convertible	Sportwagons**
Overall Length	203.4	203.4	203.4	203.4	203.2	203.4	203.4	203.4	203.4	208.2
Overall Width	73.6	73.6	73.6	73.6	73.6	73.6	73.6	73.6	73.6	73.9
Overall Height	54.4	53.9	54.0	54.4	55.2	54.4	53.9	53.9	54.0	57.5
Wheelbase	115.0	115.0	115.0	115.0	115.0	115.0	115.0	115.0	115.0	120.0
Tread, Front	58.0	58.0	58.0	58.0	58.0	58.0	58.0	58.0	58.0	58.0
Tread, Rear	58.0	58.0	58.0	58.0	58.0	58.0	58.0	58.0	58.0	58.0
Leg Room, Front	41.1	41.2	41.2	41.3	41.2	41.3	41.3	41.3	41.3	41.3
Leg Room, Rear	35.9	33.3	33.3	35.9	35.9	35.9	33.2	33.2	33.1	39.0
Head Room, Front	38.2	37.6	38.4	38.2	37.8	38.2	37.6	37.6	38.4	37.7
Head Room, Rear	37.2	36.6	36.8	37.2	38.4	37.2	36.6	36.6	36.8	40.2
Shoulder Room, Front	58.8	58.8	58.8	58.8	58.8	58.8	58.2	58.2	58.2	58.8
Shoulder Room, Rear	58.8	56.9	45.6	58.8	58.8	58.8	56.5	56.5	45.6	58.8

\*Tailgate door opening width, 55.0"; Tailgate door opening height, 28.4". Total loading capacity, 85.9 cu. ft.

\*\*Sportwagon door opening width 55.1; height 28.5; loading capacity 97.8 cu. ft.

The illustrations in this catalogue do not necessarily show standard colors, materials and equipment. General Motors Products of Canada, Limited reserve the right to make changes at any time, without notice, in prices, colors, materials, equipment, specifications and models, and also to discontinue models. This right may be exercised without incurring any responsibility with regard to cars previously sold.

GENERAL MOTORS PRODUCTS OF CANADA, LIMITED, OSHAWA, ONTARIO