



**GOING
FORD
IS THE GOING
THING!**

New Falcon. Sleek. Smooth. Quiet. A great road car.

... that's a lot to say about any car. But new Falcon isn't just any car. It's styled, engineered and built to give you a standard of comfort, handling and performance unmatched by any other car in its class.

If you feel that's a lot to say, just drive Falcon. Personally experience the extra comfort and space. The quietness on the road. The unrivalled *security* on the road from the sure-footed, widest wide-track. The way you relax in interiors that have more deeply cushioned seats and the most relaxed *driving position*

of any car in Falcon's class. The remarkable smoothness and great flexibility of two all-new, bigger six-cylinder engines... or the exciting power of two high-performing V8's.

Sleek. Smooth. Quiet. A great road car. It's a promise that Falcon delivers — in bold, unmistakably new style!

If you want a car that really lets you know what driving pleasure is all about — take the keys. Your Ford Dealer will be happy to let you sample Falcon first-hand ... in a Test Drive!



Falcon 500 Sedan with optional GS Rally Pack and radial tyres.

Fairmont. A beautiful combination
of luxury and performance.



Fairmont Sedan with optional vinyl roof
and radial tyres.



It's easy to acquire a taste for the finer things in life. With Fairmont, all it takes is a quiet, ten minute drive. You'll discover sheer individual luxury and pure driving pleasure that distinguish Fairmont among all comparably-priced cars.

For performance, you have a high-performing all-new 250 CID six with remarkable smoothness, quietness and flexibility teamed with 3-speed SelectShift Cruisomatic — the automatic that also works as a manual.

You enjoy a true luxury ride from Fairmont's long 111-inch wheelbase and superb driving position... effortless handling and on-the-road stability from the wide 58.9-inch track... sure-stopping with big power disc brakes.

Inside, the look and feel of luxury surrounds you. Twin-comfort front lounge seats adjust to any position you desire. Rich vinyl upholstery feature "Woven Grain" inserts for additional comfort. There are pull-down armrests front and rear. Deep-pile wall-to-wall carpet is underfoot. All instruments and controls are recessed in a safety-designed instrument panel. Easy to see. Easy to use.

All around you, even lining the roof, thick insulating materials keep road noise outside. Open the glovebox, it lights up. Open the boot and it lights up.

For tailoring your Fairmont to your exact specifications, the list of power-train options is on Page 19, luxury and other options on Page 23.

STANDARD EQUIPMENT HIGHLIGHTS: All-new 250 CID, 155-horsepower 'six' with SelectShift Cruisomatic 3-speed transmission • 11 1/4-inch turbo-cooled and ventilated power disc brakes • Fully reclining and individually adjustable front seats upholstered in "Woven Grain" luxury vinyl • Folding centre armrests front and rear • Deep-pile carpet • "Freshaire" heater/demister with 2-speed booster fan • Teak-grained instrument panel • Centre dome light and special reading lights set in the rear pillars • Courtesy lights operated by all doors • 2-speed electric windscreen wipers • Push-button electric windscreen washers • Reversing lights • Full wheel covers • All the Ford Lifeguard design safety features listed on Page 21.

Fairmont. A beautiful combination of luxury and performance.



Futura Sedan with optional vinyl roof and radial tyres.



Futura. Very special stepping up.

One look. One drive. It's all beautifully clear. Futura is special motoring. But for all its smooth good looks, silky performance and interior comfort, it is surprisingly low-priced.

For the driver — and front seat passengers — there's more roominess than in any competitive car. And more leg-room in the rear. Pull-down centre armrests front and rear mean versatile full-width seats one minute; personal, bucket-like seats the next. Wall-to-wall carpeting is standard. So is a 2-speed heater/demister, and generous layers of insulation materials to let you travel in hushed quietness.

Standard engine is the highly-flexible and ultra-smooth all-new 250 CID 'six', with all-synchromesh manual transmission. Power disc brakes are also standard.

Distinctive badges, sweeping chrome side-mouldings with colour-keyed vinyl inserts and full wheel covers make you look as good as you feel.

Then there are exclusive options to make your inside life more comfortable, the outside look even sportier, the performance even more exciting.

STANDARD EQUIPMENT HIGHLIGHTS. All-new 250 CID, 155-horsepower 'six' • 11¼-inch turbo-cooled and ventilated power disc brakes • All-syncho 3-speed manual transmission • Fold-away centre armrests front and rear • Deep-pile carpet • "Freshaire" heater/demister with 2-speed booster fan • Glove-box light • Courtesy lights operated by all doors • Luggage compartment light • 2-speed electric windscreen wipers • Push button electric windscreen washers • Reversing lights • All the Ford Lifeguard design safety features on Page 21.

Power-train combinations are on Page 19 . . . luxury and other options on Page 23.

Falcon 500. Great new standard of value-packed action.



Falcon 500 Sedan with optional vinyl roof, full wheel covers and radial tyres.

Even standing still, Falcon 500 looks like it's going places. When it does — it goes with more style, power, performance and comfort than ever before!

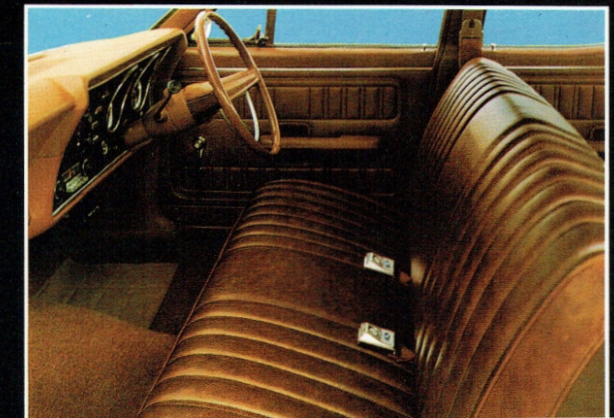
There's an all-new, quiet, high-performance 200 CID 'six' with all-synchromesh transmission. Ride is spread smoothly over a long 111" wheelbase. Stability is sure-footed with the widest track in its class.

Comfort is guaranteed . . . with wide, deeply-cushioned seats upholstered in supple, leather-grain vinyls — and more head, leg and shoulder room than any other car in its class.

It's designed to ride quieter than any other car in its field, and is the only car to give you a completely sound-proofed interior (thick layers of insulating materials even line the roof).

You can also virtually design your own *kind* of car by selecting from Falcon's almost endless array of options. Engines go all the way up to a 250 hp V8. SelectShift Cruisomatic lets you use it as a fully automatic — or as a manual. 11¼-inch power disc brakes give you effortless fade-free stopping. The full list of options is on Page 23.

STANDARD EQUIPMENT HIGHLIGHTS: All-new 200 CID, 130-horsepower 'six' with all-synchro 3-speed manual transmission • Big 10-inch diameter brakes • Cockpit-type instrument panel • Heater/demister • Airflow ventilation system • 2-speed electric windscreen wipers • Push-button electric windscreen washers • Courtesy lights operated by front doors • Reversing lights • All the Ford Lifeguard design safety features listed on Page 21.



Falcon GT. The ultimate in luxury-performance motoring

There's a special brand of magic about this car. A look... a feel... a pulse-quickenning anticipation of motoring at its finest.

Smooth, disciplined and predictable, Falcon GT ranks with the world's best for performance, safety and luxury. You fire up a super-high performing 300-horsepower 4-barrel V8. Power reaches the road through a remote-control, close-ratio 4-on-the-floor all-synchro shift. You ride on a lowered competition-type suspension with super-duty shock absorbers and wide-oval radial tyres. And you stop just as surely as you go with 11 1/4-inch turbo-cooled and ventilated power disc brakes.

When you read the standard equipment listing below you'll see just how much car the GT is... how it's the best luxury-performance car you can buy for your money.

STANDARD EQUIPMENT HIGHLIGHTS: *Performance Items:* Super-High-Performance 4-barrel, 300-horsepower V8 with Dual Exhausts • All-Synchromesh, Remote-Control, Close-Ratio 4-on-the-floor • Competition Twin Plate Clutch for High-Torque Transmission • Limited-Slip Differential • Lowered Competition-Handling Suspension with Super-Duty Shock Absorbers • ER70 Wide-Oval Radial Tyres on 6JJ Wheels with Safety Rims • 11 1/4-inch Diameter Power Disc Brakes — Ventilated and Turbo-Cooled • 16.4-gallon Fuel Tank.

Luxury Items: Twin-Comfort Front Seats with "Woven Grain" Luxury Vinyls • Sports Console • Deep-pile Carpeting • 2-speed Heater/Demister • Folding Centre Armrest — rear • Complete 'Cockpit' Instrumentation including Tach, Oil, Temp. and Fuel Gauges, Speedometer and Odometer • Special GT Steering Wheel with Full-Circle Rim-Squeeze Horn • Clock.

Safety Items: Collapsible Steering Column • Padded Steering Wheel Hub, Instrument Panel, Sun-Visors and Door-Pull Armrests • Recessed Controls and Instruments • Dual Brake System • Quartz-Iodine Long Range Driving Lights • Safety hood-locks • All other Ford Lifeguard Design Safety Features on Page 21.



Falcon GT Sedan complete with 'Shaker' hood air scoop.



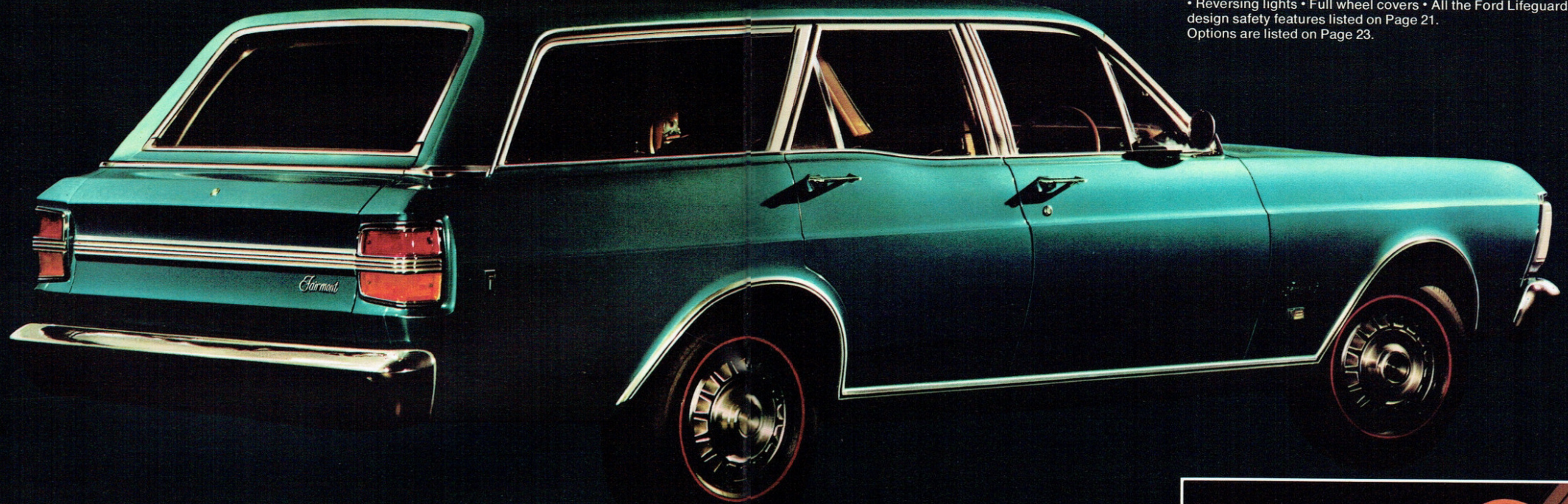
Fairmont...the wagonmaster.

You've never seen a wagon as rich as Fairmont. Elegant styling outside — and inside. Every luxury item you find in the Fairmont Sedan is matched, feature for feature, in the wagon. So is the beautifully quiet, highly responsive way of going.

Your standard power team is the all-new, 250 CID, 155-horsepower 'six' with SelectShift Cruisomatic transmission. 11 1/4-inch power disc brakes are also standard. So is an electric tailgate window.

Loadspace is 75 cubic feet — bigger than any other comparably priced wagon. Rear seat conversion to flat floor space is the easiest. And deep-pile carpet is wall-to-wall . . . in the passenger compartment and in the rear load area.

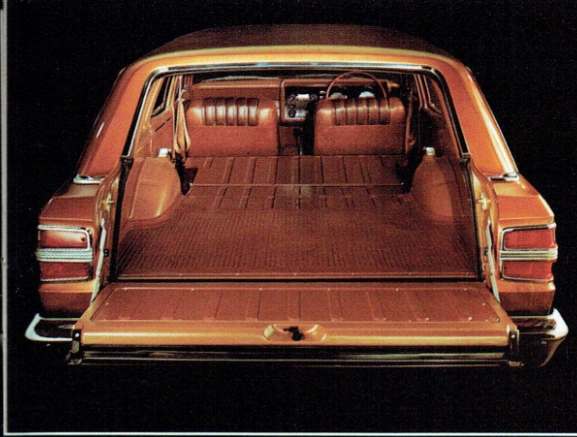
STANDARD EQUIPMENT HIGHLIGHTS: All-new 250 CID, 155-horsepower 'six' with SelectShift Cruisomatic 3-speed transmission • 11 1/4-inch turbo-cooled and ventilated power disc brakes • Fully reclining and individually adjustable front seats upholstered in "Woven Grain" luxury vinyl • Folding centre armrest, front • Deep-pile carpet • "Fresaire" heater/demister with 2-speed booster fan • Teak-grained instrument panel • Centre dome light • Courtesy lights operated by all doors • 2-speed electric windscreen wipers • Push-button electric windscreen washers • Electric tailgate window • Reversing lights • Full wheel covers • All the Ford Lifeguard design safety features listed on Page 21. Options are listed on Page 23.



Fairmont Station Wagon with optional radial tyres.



Falcon 500 Wagon. Handsome, rugged and versatile



Room. That's what Falcon wagons are all about. Room for a full complement of passengers with more head, leg and shoulder room than in any other comparably priced wagon ... or fold the rear seat down and you've got 75 cubic feet of loadspace — again more than in any other comparably priced wagon.

Yet for all that versatile room, the Falcon 500 wagon gives you all the personal comfort of a sedan, and a ride that's the closest to a sedan ride, too.

You can also take those highway curves with surefooted ease on Falcon's famous "wide-track", and have the added safety of big, extra-wide, 7.35 x 14-inch tyres.

Your performance can be exactly as you'd like it. Standard engine is the all-new 200 CID 130-horsepower 'six' which gives you performance with exceptional economy — or you can move on up to the all-new 250 CID, 155-horsepower 'six' or 302 CID, 220-horsepower V8.

Options? You only have to ask. You can make your wagon as sporty as you like — as luxurious as you please. The full list is on Page 23.

STANDARD EQUIPMENT HIGHLIGHTS: All-new 200 CID, 130-horsepower 'six' with all-synchro 3-speed manual transmission • Big 10-inch diameter brakes • Extra-low-profile 7.35 x 14-inch tyres on 5JJ safety-rim wheels • Completely sound-proofed interior • Heater/demister • 2-speed electric windscreen wipers • Push-button electric windscreen washers • Courtesy lights operated by front doors • Reversing lights • All the Ford Lifeguard design safety features listed on Page 21.



Falcon 500 Wagon with optional GS Rally Pack and radial tyres.

2 all-new bigger sixes. 3 high-performing V8's. New automatic transmission. Unmatched economy. It all adds up to you going first.

When it comes to engines, Ford has the power to make you happy as the road is long. All told, there are five. 2 all-new, bigger 'sixes' and three big V8s!

The choice you make depends primarily on what kind of spirited performance suits you best.

The same applies to transmissions. Team the kind of transmission that fits your own ideas on driving with your

engine choice, and you have a complete tailor-made performance package.

2 all-new bigger 'sixes'.

All-new 200 CID, 130-horsepower . . .

all-new 250 CID, 155-horsepower . . .

Both these all-new engines are designed and engineered to bring you new standards of smoothness and quietness,

and provide you with increased performance and response in the medium-speed ranges for extra-safe passing in normal driving. (The 250 CID 'six' in particular has performance characteristics akin to many V8 engines.)

You'll find something else, too, about these sixes. Something that will please your pocket. Even with their significantly increased performance you still enjoy unmatched fuel economy.

EXCEPTIONALLY HIGH TORQUE. The amount of torque (the degree of power or 'thrust' that is actually applied to the road) is extremely high at low engine revs. which means you get your power more quickly — and *without* your engine working hard.

OTHER SPECIAL FEATURES include 7 main-bearing crankshaft with 8 counterweights for ruggedness and greater smoothness . . . "Auto-thermic" pistons which make for quieter engine performance . . . a new exhaust system with increased body isolation and new engine mountings for added quietness . . . a 50% larger capacity water pump for faster, more efficient engine cooling . . . new carburetion for freer "breathing", more efficient power and economy . . . and new rear axles, incorporating Timken tapered roller bearings for greater rear axle load capacity and ruggedness.

Three big V8s.

If you want your power really big and instantly on tap, choose a V8 — remembering that Ford is the world's most experienced builder of V8s.

THE 302 CID, 220-HORSEPOWER V8 . . . gives you smooth running, high acceleration and effortless cruising combined with high reliability and good fuel economy. It's optional on all models, except the GT.

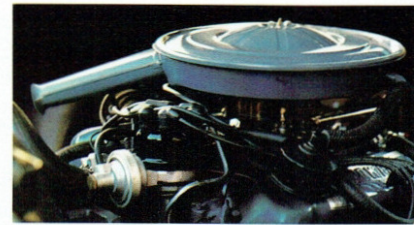
THE NEW 351 CID, 250-HORSEPOWER V8 . . . is an exceptionally potent-performing V8. Its extra-safe passing power and acceleration is a revelation to even the most ardent sports-performance enthusiasts — and is optional on all Sedans, except the GT.

THE NEW HIGH-PERFORMANCE 351 CID, 300-HORSEPOWER V8 . . . belongs to the GT only. As the specifications on the right show you, it is the biggest and most responsive power plant in a regular production car.

New SelectShift Cruisomatic.

Ford's new SelectShift Cruisomatic 3-speed transmission gives you an edge over any other automatic in the industry. It's not just a silken-smooth way of travelling — it also doubles as a manual when you want it to. You can shift up and down "holding" your gears or simply put it in "DRIVE" and use it as a fully automatic.

It is available in whichever form you prefer — on the



column, or in sporty T-Bar form on the floor.

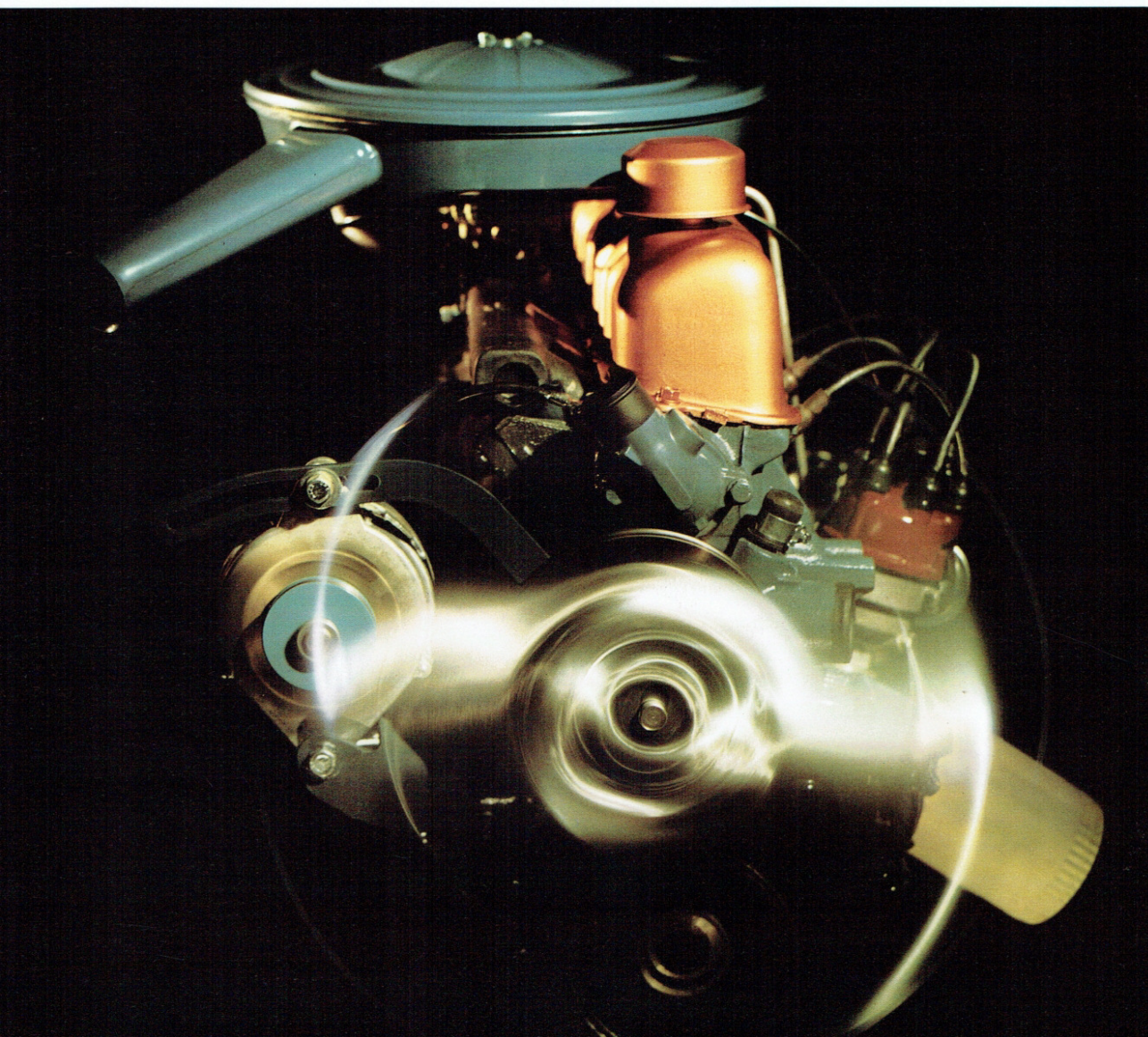
OTHER TRANSMISSIONS. Take your pick . . . apart from the 2 versions of SelectShift Cruisomatic there's a rugged and smooth fully-synchro 3-speed manual, mounted on the column . . . or the 4-on-the-floor, with or without console.

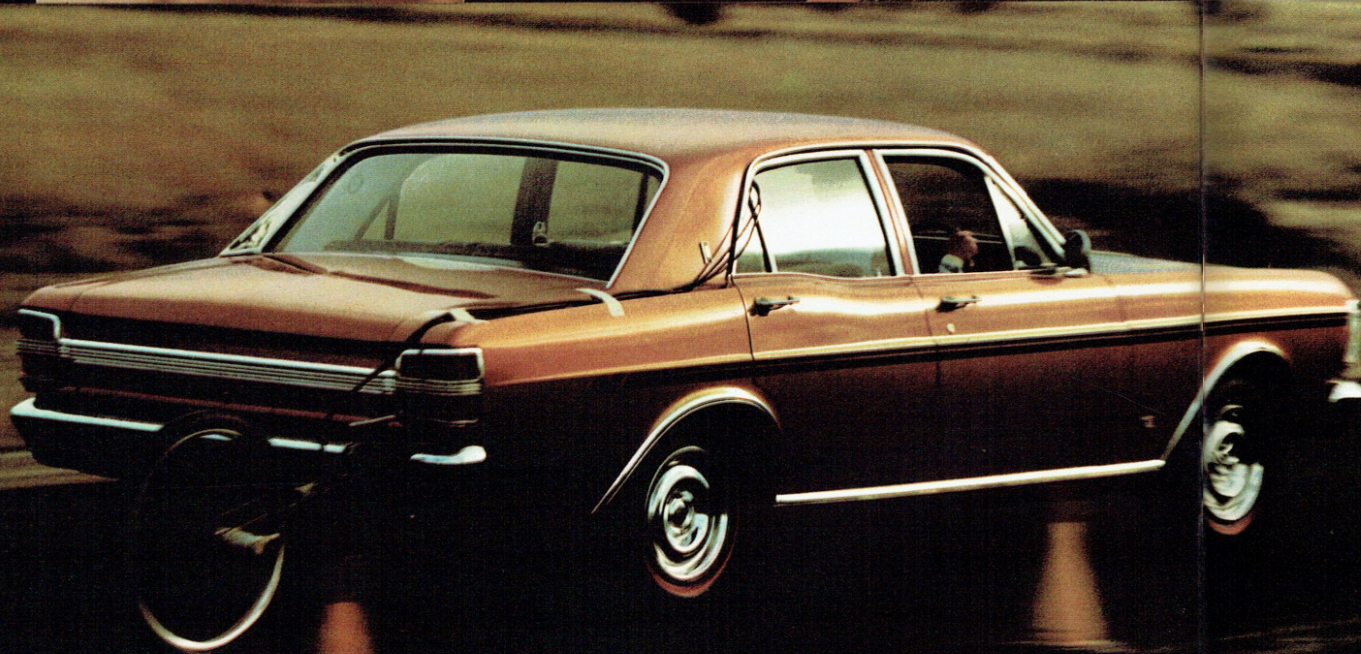
ENGINE SPECIFICATIONS

Engines	200 CID Six	250 CID Six	302 CID V8	351 CID V8	GT V8
Cylinders/Valves	6/OHV	6/OHV	8/OHV	8/OHV	8/OHV
Displacement: Cubic Inches Cubic Capacity	200 3280	250 4100	302 4950	351 5750	351 5750
Bore Stroke	3.68" x 3.13"	3.68" x 3.91"	4.0" x 3.0"	4.0" x 3.5"	4.0" x 3.5"
Compression Ratio	9.1:1	9.3:1	9.5:1	9.7:1	11.0:1
Carburetion	Single Barrel	Single Barrel	2 Barrel	2 Barrel	4 Barrel
Max BHP at RPM	130 4600	155 4000	220 4600	250 4600	300 5400
Max. Torque (lb/ft) at RPM	190 2000	240 1600	300 2600	355 2600	380 3400
Rated Horsepower	32.5	32.5	51.2	51.2	51.2

POWER TRAIN COMBINATIONS	SEDANS			WAGONS		
	FALCON 500	FUTURA	FAIRMONT	FALCON GT	FALCON 500	FAIRMONT
200 CID, 130-horsepower Six with:						
All-synchro, 3-speed manual (column)	•	X	X	X	•	X
SelectShift Cruisomatic 3-speed (column)	OPT	X	X	X	OPT	X
250 CID, 155-horsepower Six with:						
All-synchro, 3-speed manual (column)	OPT	•	O/R	X	OPT	O/R
All-synchro, 4-on-the-floor manual	OPT	OPT	OPT	X	OPT	OPT
SelectShift Cruisomatic 3-speed (column)	OPT	OPT	•	X	OPT	•
SelectShift Cruisomatic 3-speed (T-Bar)	OPT	OPT	OPT	X	OPT	OPT
302 CID, 220-horsepower V8 with:						
All-synchro, 3-speed manual (column)	OPT	OPT	OPT	X	OPT	OPT
All-synchro, 4-on-the-floor manual	OPT	OPT	OPT	X	OPT	OPT
SelectShift Cruisomatic 3-speed (column)	OPT	OPT	OPT	X	OPT	OPT
SelectShift Cruisomatic 3-speed (T-Bar)	OPT	OPT	OPT	X	OPT	OPT
351 CID, 250-hp, 2-barrel V8 with:						
All-synchro, 4-on-the-floor manual	OPT	OPT	OPT	X	X	X
SelectShift Cruisomatic 3-speed (column)	OPT	OPT	OPT	X	X	X
SelectShift Cruisomatic 3-speed (T-Bar)	OPT	OPT	OPT	X	X	X
High-Performance 351 CID, 300-hp, 4-barrel V8 with:						
All-synchro, 4-on-the-floor manual	X	X	X	•	X	X
SelectShift Cruisomatic 3-speed (T-Bar)	X	X	X	OPT	X	X

Code for chart: • means standard equipment. "OPT" means optional at extra cost. "O/R" means optional at reduced cost. "X" means not available.





A feeling behind the wheel that can't be matched by any other car in Falcon's class.

From the moment you take the driver's seat of new Falcon, you'll sense it to be exactly what it's designed to be . . . a car built to give you effortless pleasure behind the wheel.

It all starts, literally, in the way you sit. Relaxed, deeply cushioned with "raked" seat-backs to eliminate fatigue. High enough to see what's going on around you. Legs stretched out. Arms comfortable at "ten to two" on the wheel.

On the move, and the handling's great. That's the widest track in Falcon's class at work. The extra width between Falcon's wheels for more positive control, safer handling and steadier cornering.

Suspensions are designed to match the handling. Not too soft, not too firm; just right and rugged enough to iron out the worst of conditions, or to make the most of smooth conditions.

Another big feature is the exclusive "Torque-box" chassis — the steel frames and reinforcing cross members welded the entire length of the body. Together with Falcon's wide-track and long 111-inch wheelbase it combines to give you a road-hugging strength and smooth big-car ride unmatched by any other car in Falcon's class.

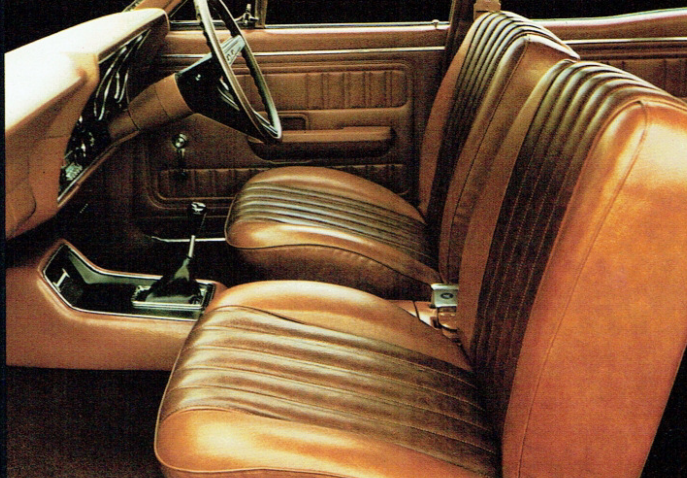
If you value silence as a driving virtue, Falcon gives you a double bonus. First, in the noticeable quietness of its new engines. Second, in the generous layers of insulating materials which, all around you and even lining the roof, keep road noise out on the road.

And you'll stop just as sure as you go. Falcon's drum brakes are bigger, self-adjusting, with thick bonded linings for longer life. Power disc front brakes (standard on Futura, Fairmont and Falcon GT) provide the ultimate in stopping action. 11 1/4-inch diameter, ventilated and Turbo-cooled, they have exceptionally high fade-resistant characteristics.

Another thing you can take for granted is reliability. It's nice to know that your Falcon has passed one of the most stringent testing programs in the automotive industry.

Ford Lifeguard Safety Features . . . standard on every Falcon:

- Collapsible steering column • Impact-absorbing steering wheel with full-width padded hub • Padded instrument panel
- Padded sun visors • Padded door-pull armrests • Recessed and safety-design control knobs • Recessed interior door handles • Double-grip safety door locks • Non-glare, shatterproof, inside rear-view mirror that "yields away" upon impact • Exterior rear-view mirror • 2-speed electric windscreen wipers • Windscreen washers • Dual hydraulic brake system with warning light • Front lap-sash seat belts and front centre-lap belt • High-intensity headlights • Wrap-around front turn-indicator and parking lights • Wrap-around tail, stop and turn-indicator lights • Reversing lights.



Be a Grand Sport...

Add the GS Rally Pack to the model of your choice . . . Falcon 500, Futura or Fairmont Sedan . . . Falcon 500 or Fairmont Wagon. When you do, exciting things happen.

Along the side, raking GS Rally Stripes sweep to a GS insignia. Heavily-chromed GS Full Wheel Covers add to the sporty flavour and show your exuberant mood. Inside, there's a deep-dish 3-Spoke Wood-Grained Sports Steering Wheel with a Full-Circle, Rim-Squeeze Horn, the GS Cockpit Dash — with Tach, Oil, Temp, and Fuel gauges, Electric Clock, Speedometer and Odometer — really lets you know what's happening.

You take it from there. Add snug, contoured Bucket Seats and a Sports Console that houses your choice of 4-speed, All-Synchro Manual Shift or T-Bar Automatic. 220 or 250-horsepower V8. Turbo-cooled Power Disc Brakes (standard on most models). Tinted and Laminated Windscreen. Vinyl Roof. The exclusive sliding Sun-Roof. Stereo Radio/Tape Player.

Falcon's great list of options stretches on and on. The Falcon you choose can be a luxury car . . . sports car . . . family fun car . . . or a blend of all three, just the way you want it to be.

A few of Falcon's options which really make your driving more pleasurable are:

INTEGRATED AIR-CONDITIONING pays tremendous dividends in comfort. Additional outlets and improved air-flow provide you with the coolest travel in the hottest weather, or warm comfort in winter. You literally travel in a "climate" of your own choosing.

POWER STEERING gives you effortless handling and parking. With its fast-ratio it doesn't rob you of control or road "feel".

STEREO RADIO/TAPE PLAYER is the world's first solid-state 8-track stereo/radio combination. You can switch in an instant from the quality radio to stereo tape by inserting any 8-track cartridge.

BUCKET SEATS give snug personal comfort to you and your front seat passenger. Available in Falcon 500 and Futura models.

SLIDING SUN-ROOF lets the sun shine in . . . gives the exhilarating, fresh-air feel of a sports car. Available in all sedans.

The full list of luxury and performance options

(Engines and transmissions listed on Page 19)

	FALCON 500	SEDANS			WAGONS	
		FUTURA	FAIRMONT	FALCON GT	FALCON 500	FAIRMONT
Luxury equipment						
Sun roof	OPT	OPT	OPT	OPT	X	X
Stereo radio-tape player	OPT	OPT	OPT	OPT	OPT	OPT
SelectAire integrated air-conditioning (a)	OPT	OPT	OPT	OPT	OPT	OPT
Deep-pile carpet	OPT	•	•	•	OPT	•
Nylon-weave seat trim	OPT	OPT	OPT	OPT	OPT	OPT
Full width front seat with foldaway centre armrest	X	•	OPT	X	X	OPT
Reclining bucket seats (b)	OPT	OPT	•	•	OPT	•
Sports Console (c)	OPT	OPT	X	•	OPT	X
Electric clock	OPT	OPT	OPT	•	OPT	OPT
Long-range radio (push-button or manual)	OPT	OPT	OPT	OPT	OPT	OPT
Centre front lap belt	OPT	OPT	OPT	X	OPT	OPT
2 rear-seat lap belts	OPT	OPT	OPT	OPT	OPT	OPT
2 rear-seat lap-sash belts	OPT	OPT	OPT	OPT	OPT	OPT
1 rear-seat centre lap belt	OPT	OPT	OPT	OPT	OPT	OPT
Power steering	OPT	OPT	OPT	OPT	OPT	OPT
Power tailgate window (wagons)	X	X	X	X	OPT	•

Performance equipment

Power disc brakes (front)	OPT	•	•	•	OPT	•
Mag-Alloy sports road wheels	OPT	OPT	OPT	OPT	OPT	OPT
Lowered competition-type suspension (d)	OPT	OPT	OPT	•	X	X
"High-ride" suspension	OPT	OPT	OPT	X	•	•
Limited-slip differential	OPT	OPT	OPT	•	OPT	OPT
Super-duty shock absorbers	OPT	OPT	OPT	•	OPT	OPT
Dual exhaust system (e)	OPT	OPT	OPT	•	X	X
Special heavy-duty dust package (needed only under extreme dust conditions)	OPT	OPT	OPT	OPT	OPT	OPT
Heavy-duty battery	OPT	OPT	OPT	•	OPT	OPT
Grand Sport rally package (described on the opposite page)	OPT	OPT	OPT	X	OPT	OPT
36.4 gallon fuel tank	X	X	X	OPT	X	X

Tyres and Wheels

Extra-low-profile:	•	•	•	X	X	X
6.95 x 14, black side-wall, 5JJ safety wheels	•	•	•	X	X	X
6.95 x 14, white side-wall, 5JJ safety wheels	OPT	OPT	OPT	X	X	X
7.35 x 14, black side-wall, 5JJ safety wheels	OPT	OPT	OPT	X	•	•
7.35 x 14, white side-wall, 5JJ safety wheels	OPT	OPT	OPT	X	OPT	OPT
Radial-Ply:						
185 x 14, black side-wall, 6JJ safety wheels	OPT	OPT	OPT	X	OPT	OPT
Special ER70 x 14, red side-wall, wide-oval, 6JJ safety wheels	OPT	OPT	OPT	•	OPT	OPT

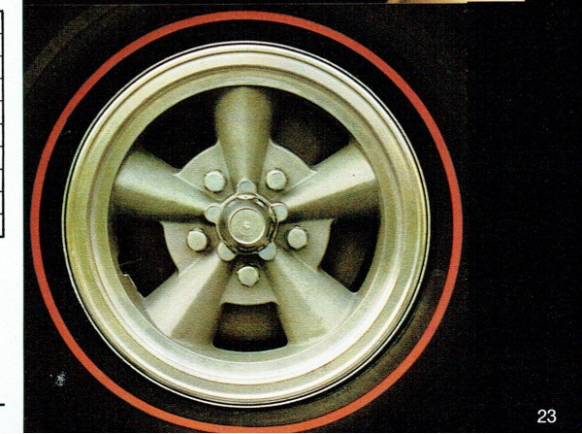
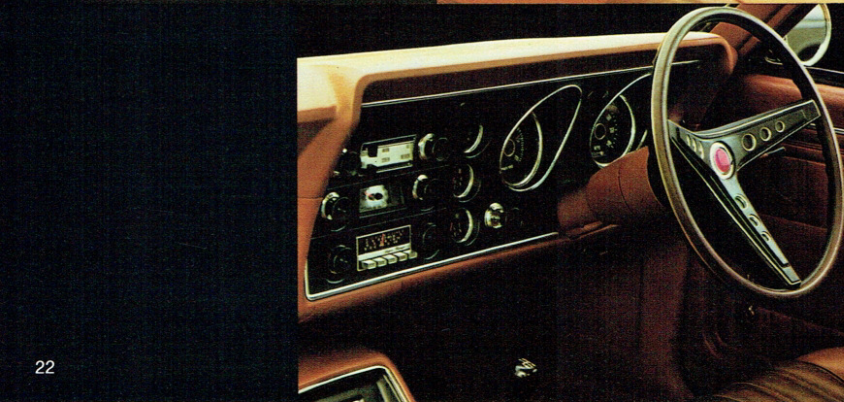
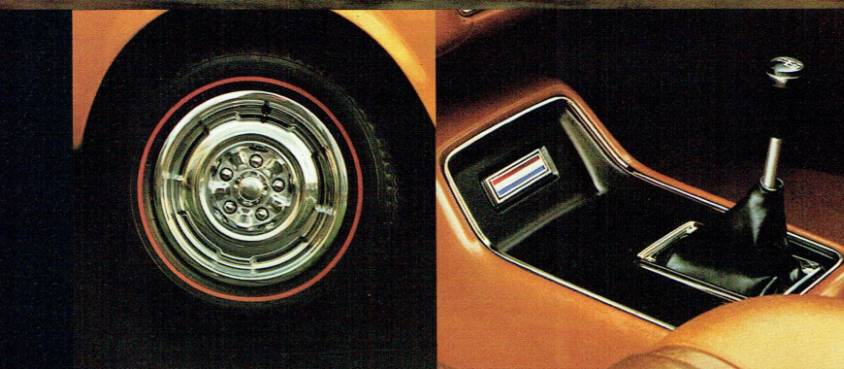
Exterior Items

Vinyl covered roof — black or beige	OPT	OPT	OPT	OPT	X	X
Styled full wheelcovers	OPT	•	•	X	OPT	•
Exterior rear-view mirror (passenger's side)	OPT	OPT	OPT	X	OPT	OPT
Remote control racing mirror (driver's side)	OPT	OPT	OPT	•	OPT	OPT
Dual racing mirrors	OPT	OPT	OPT	OPT	OPT	OPT
Tutone paint (white roof)	OPT	OPT	OPT	OPT	OPT	OPT
Laminated and graduated-tint windscreen	OPT	OPT	OPT	OPT	OPT	OPT
Delete black hood	X	X	X	OPT	X	X
Delete Super Roo	X	X	X	OPT	X	X
Delete bodyside stripes	X	X	X	OPT	X	X

Footnotes to Option Chart:

Code: • means standard equipment. "OPT" means optional at extra cost. "X" means not available.

(a) SelectAire integrated Air-conditioning available only with 250CID '6' and V8 engines. (b) Carpet must be fitted with Bucket seats. (c) Sports Console available only with floor shifts and bucket seats. (d) Lowered competition-type suspension is standard with the 351CID V8 engine and optional with the 302CID V8 engine. (e) Dual exhaust available with 351CID V8 only.



Specifications:

CLUTCH (Manual Transmission). Diaphragm spring type, single cushion disc, dry plate, hydraulically operated. 200 CID 6 cylinder engine: Diam. 9.25", Friction area 77.8 sq.ins. 250 CID 6 cylinder engine: 9.50", Friction area 78 sq.ins. 302 CID 8 cylinder engine: Diam. 10.0", Friction area 85.5 sq.ins. 351 CID 8 cylinder engines and GT engine, Twin plate diaphragm spring type. Dry plate, hydraulically operated.

MANUAL TRANSMISSION Column shift: 3 forward speeds all synchro — 1 reverse. Ratios: 6 cylinder: 1st — 2.95; 2nd — 1.69; 3rd — 1.00; reverse — 3.67. 8 cylinder: 1st — 2.71; 2nd — 1.69; 3rd — 1.00; reverse — 3.37.

FOUR-ON-THE-FLOOR MANUAL All synchro. Ratios 1st — 2.78; 2nd — 1.93; 3rd — 1.36; 4th — 1.00; reverse — 2.78.

AUTOMATIC TRANSMISSION 200 CID and 250 CID six cylinder engines with Cruisomatic: Ratios 1st — 2.39; 2nd — 1.45; 3rd — 1.00; Reverse — 2.09. 302 CID V8 Cruisomatic 1st — 2.46; 2nd — 1.46; 3rd — 1.00; Reverse — 2.20. 351 CID V8 Cruisomatic 1st — 2.40; 2nd — 1.47; 3rd — 1.00; Reverse — 2.0. GT 351 CID V8 Cruisomatic 1st — 2.40; 2nd — 1.47; 3rd — 1.00; Reverse — 2.00.

REAR AXLE Ratios (to 1): 200 CID six cylinder engine (manual/automatic) 3.23. 250 CID six cylinder engine (3 speed manual) 3.23; (automatic) 2.92. (4 speed manual) 2.92. 302 CID V8 (manual/automatic) 2.92. 351 CID V8 (manual) 3.00; (automatic) 2.75. GT 351 CID V8 (manual) 3.00; (automatic) 2.75.

FRONT SUSPENSION Angle-poised ball-joint type. Heavy duty coil springs with hydraulic shock absorbers. Torsion bar ride stabilizer.

REAR SUSPENSION Semi-elliptic asymmetrical, variable rate leaf springs. Diagonally mounted hydraulic shock absorbers. Rubber bushed shackles.

STEERING Recirculating ball type. Steering gear ratio 20:1 (GT

and Optional Power Steering — ratio 16:1) Steering Wheel, 16 in. diam. Turning circle 36.6 ft.

BRAKES Dual Line system with inbuilt warning light on instrument panel. Self-adjusting hydraulic, 10" diam. front and rear. Solid cast front drums. Bonded linings — area 154.4 sq. ins. Floating caliper type power disc front brakes, turbo-cooled and ventilated, 11.25" diam., optional; standard GT and Fairmont.

WEIGHTS Approximate kerb weight with 200 CID engine, manual transmission. Sedans — from 3003 lbs. Wagons — from 3163 lbs. Add 37 lb. for SelectShift Cruisomatic.

FUEL TANK CAPACITIES Sedans 16.4 gals, Wagons 13.6 gals.

DIMENSIONS Overall length, sedans — 184.6", wagons — 190.3". Overall width, sedans & wagons — 73.6". Overall height, sedans — 55.8", wagons — 56.2". Wheelbase — 111". Track front — 58.9", rear — 58.5". Ground clearance — 6.15" sedans, 6.35" wagons.

WARRANTY Falcon gives you warranty protection for 12,000 miles or 12 months whichever comes first, excluding tyres and tubes which are warranted by their manufacturer. Every Falcon is warranted against defects in materials and workmanship for this period. Owners are responsible only for normal maintenance and routine replacement of maintenance items.

The specifications referred to herein were in effect at the time this publication was approved for printing; however, Ford Motor Company of Australia Limited and/or Ford Sales Company of Australia Limited, reserve the right, subject to the laws of any state or territory and the regulations of any competent authority which may be applicable at the time, at its discretion and without notice, to change specifications and prices of the products referred to herein at any time and without incurring any liability whatsoever to any purchaser thereof. Some of the items illustrated or referred to in this publication are optional at extra cost.

FORD SALES COMPANY OF AUSTRALIA LIMITED
Reg. Office: 1735 Sydney Rd., Campbellfield, 3061

FALCON

