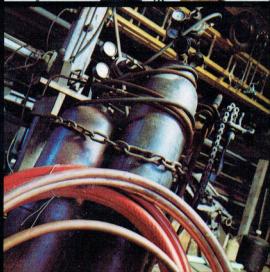


**Falcon  
10 & 15 cwt.  
4 door van.**







New luxury, new comfort, new style—new Falcon Van is all-new!

No van has ever been so eye-catching—or such a pleasure to work with.

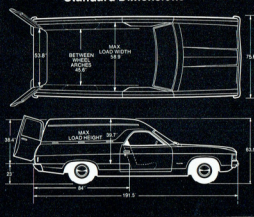
Falcon's new and exclusive rear double-doors open to either 90° with a positive locking stop, or swing open to a full 180°, to make it easier for you to load and unload—new Falcon is the only van in its class with them. Exclusive too, is new Falcon Van's wheelbase—116"—the longest in its class to give you more load space.

Now start adding up new Falcon Van's other features . . . a genuine, 15 cwt. load capacity, distributed right over the rear axle in a 55/45 ratio for perfect balance, ride and handling . . . a torque-box-construction chassis . . . an all-steel floor . . . an extra-heavy duty rear axle . . . a padded, wrap around, cockpit-style stronger suspension, load-rated wheels and tyres.

Comfort? New Falcon has a cabin that's roomy, safe and luxurious—complete with deeply-cushioned, high-backed seating . . . Aeroflow flow-through ventilation . . . a padded, wrap around, cockpit-style instrument panel and a steel cargo barrier.

If you use a van to make a living, get the van that's easier to live with—new all-new Falcon. The 4-door van.

#### Standard Dimensions



#### Standard Equipment

Rear double doors—opening to 90° or a full 180° • 130 horsepower, 200 CID, 'Six' • Load-rated, 7.75, L14, low-profile, 6 ply tyres • 14 inch, 5-stud wheels with 6JJ Safety Rims • Big, self-adjusting, 10 inch drum brakes • Column mounted, 3 speed transmission • Heavy-duty rubber floor mat • Long-lasting vinyl upholstery • Deep-cushioned, high-back, full-width seat • Cockpit-style, deeply-padded dash with rocker-switch controls • Aeroflow flow-through ventilation system • Blendaire 2-speed heater/demister • 2-speed electric, non-lift windscreen wipers • Push-button electric windscreen washers • Exterior, styled, rear-view mirrors • Roof insulation and sound deadening • Interior bonnet lock • Sealed and lockable spare wheel compartment • 16 gallon fuel tank.

#### Standard Ford Lifeguard safety features

Rear fender side-marker lights incorporating reflectors and turn signals • wrap-around front turn/park lights • reversing lights • high-backed seats • steering column and ignition lock • deeply-recessed and padded, cockpit-type instrument panel • rocker-switch type controls • Windscreen-mounted, breakaway, anti-glare interior rear-view mirror • Blendaire heater/demister with 2-speed fan • face-level Aeroflow flow-through ventilation • collapsible steering column • Impact-absorbing steering wheel with full-width padded hub • padded sunvisors • double-grip safety door locks • recessed interior door handles • flush-mounted exterior door handles • 2-speed electric windscreen wipers • non-lift, non-reflective wiper blades • push-button, 4-jet programmed electric windscreen washers • thick safety-plate glass windscreen with 'zone-toughened' area in front of driver, and safety-glass all other windows • Slim-pillar design—for greater visibility • dual hydraulic brake system with warning light • exterior, styled rear-visibility mirrors • double-sided safety-rim wheels • seat belts: 2 lap-sash, 1 lap with full-width seats; 2 lap-sash with bucket seats.

Illustrated above left: Falcon Van standard interior.

Illustrated above top: Optional GS dashboard and steering wheel.

Illustrated above bottom: Optional sports console with T-bar automatic shift.



## Specifications.

ENGINES	200 CID Six	250 CID Six	250 CID Six	302 CID V8
Cylinders/Valves	6/OHV	6/OHV	6/OHV	8/OHV
Displacement (Cu.Ins./cc)	200/3280	250/4100	250/4100	302/4950
Carburettion	Single Barrel	Single Barrel	2 Barrel	2 Barrel
Comp. Ratio (to 1)	9.1:1	9.3:1	9.3:1	9.5:1
Max. B.H.P. @ RPM	130 @ 4600	155 @ 4000	170 @ 4600	240 @ 5000
Max. Torque (lb./ft.) @ RPM	190 @ 2000	240 @ 1600	250 @ 2800	305 @ 2600
Bore x Stroke	3.68" x 3.13"	3.68" x 3.91"	3.68" x 3.91"	4.0" x 3.0"
Rated Horsepower	32.5	32.5	32.5	51.2

**ENGINE FEATURES:** Up to 6,000 mile oil changes; 12-volt electrical system; 54 plate 46 amp/hour battery; 35 amp heavy-duty alternator; corrosion resistant muffler.

**CLUTCH (Manual Transmission):** Diaphragm spring type, single clutch disc, dry plate, hydraulically operated. 200 CID 6 cylinder engine: Diam. 9.25", Friction area 77.8 sq. ins. 250 CID 6 cylinder engine: Diam. 9.50", Friction area 78 sq. ins. 302 CID 8 cylinder engine: Diam. 10.0", Friction area 85.5 sq. ins.

**MANUAL TRANSMISSION:** 3 forward gears — 1 reverse. Steering column change. Synchronesh 2nd and 3rd gears. (Synchro. 1st gear, option, extra.) Ratios (to 1) 6 cylinder engine: 1st—2.95, 2nd—1.69, Top—1.00, Reverse—3.67. 8 cylinder engine: (all synchromesh) 1st—2.71, 2nd—1.69, Top—1.00, Reverse—3.37. 4 forward speeds — 1 reverse. Floor change, all synchromesh. Ratios (to 1) 1st—2.78, 2nd—1.93, 3rd—1.36, Top—1.00, Reverse—2.78.

**CRUISOMATIC TRANSMISSION:** Three speed automatic with SelectShift operation to provide both manual and automatic operation. Ratios—Six cylinder. 1st—2.39, 2nd—1.45, 3rd—1.00, Reverse—2.09. With 302 eight cylinder engine Ratios (to 1): 1st—2.46, 2nd—1.46, Top—1.00, Reverse—2.20.

**REAR AXLE:** Ratios—200 CID, 3.50:1; 250 CID, 3.23:1; 250-2V, 3.23:1; 302 CID, 2.92:1. 7.75" diameter ring gear.

**FRONT SUSPENSION:** Angle-poused ball-joint type. Heavy-duty coil springs with internally mounted hydraulic double-acting shock absorbers. Torsion bar ride stabilizer.

**REAR SUSPENSION:** Semi-elliptical asymmetrical 2-stage 7-leaf variable rate leaf springs. Diagonally mounted hydraulic double-acting shock absorbers. Rubber bushed shackles.

**BRAKES:** Self-adjusting hydraulic 10" diam. front and rear. Solid cast front drums. Bonded linings — area 154.4 sq. ins. Power turbo cooled and ventilated disc front brake optional.

**STEERING:** Recirculating ball type steering. Gear ratio. Manual 20:1. Also variable ratio power steering optional. Steering wheel 16 ins. diam.

**WHEELS AND TYRES:** Wheels: 14" x 6J.J. Tyres: 7.75" L14 6 ply black sidewall tubeless. Wheels are of pressed steel, ventilated disc, safety rims, 5 stud mounting type.

**WEIGHTS:** Approx. kerb weights with 200 CID engine, manual transmission. 3226 lb. (15 cwt.). 3187 lb. (10 cwt.). Add 30 lb. for automatic (manual).

**GWV:** 15 cwt. 4850 lb. 6 cylinder engines, 5050 lb. 302 V8 engine. 10 cwt. 4450 lb. 6 cylinder engines, 4550 lb. 302 V8 engine.

**FUEL TANK CAPACITY:** 16.0 Imp. gals.

**DIMENSIONS:** Overall length 191.5"; Overall width 75.6"; Overall height 63.5"; Wheel-base 116", Track-front 60.5", rear 60.0"; Ground Clearance 6.4".

**WARRANTY:** Falcon Van gives you warranty protection for 12,000 miles or 12 months whichever comes first, excluding tyres, tubes and light globes. Every Falcon Van is warranted against defects in materials and workmanship for this period. Owners are responsible only for normal maintenance and routine replacement of maintenance items.

**LOW COST DEALER SERVICE & PARTS SUPPLY:** Your Ford Falcon is backed by over 400 Ford Dealers' low-cost specialised service, and the ready supply of genuine low-cost parts.

The specifications referred to above were in effect at the time this publication was approved for printing; however, Ford Motor Company of Australia Limited and/or Ford Sales Company of Australia Limited, reserve the right, subject to the laws of any state or territory and the regulations at the time, at its discretion and without notice, to change specifications and prices of the products referred to herein at any time and without incurring any liability whatsoever to any purchaser thereof. Some of the items illustrated or referred to in this publication are optional at extra cost.

FORD SALES COMPANY OF AUSTRALIA LTD. Reg. Office: 1735 Sydney Road, Campbellfield, Victoria

## OPTION AVAILABILITY

### ENGINES/TRANSMISSIONS

200 CID, 130 hp 'Six' with:		
All-synchro, 3-speed manual (column)		OPT
SelectShift Cruisomatic (column)		OPT
250 CID, 155 hp 'Six' with:		
All-synchro, 3-speed, manual (column)		OPT
All-synchro, 4-on-the-floor manual		OPT
SelectShift Cruisomatic (column)		OPT
SelectShift Cruisomatic (T Bar)		OPT
250 CID, 170 hp 'Six' with:		
All-synchro, 3-speed manual (column)		OPT
All-synchro, 4-on-the-floor manual		OPT
SelectShift Cruisomatic (column)		OPT
SelectShift Cruisomatic (T Bar)		OPT
302 CID, 240 hp V8 with:		
All-synchro, 3-speed, manual (column)		OPT
All-synchro, 4-on-the-floor manual		OPT
SelectShift Cruisomatic (column)		OPT
SelectShift Cruisomatic (T Bar)		OPT

### LUXURY EQUIPMENT

Variable ratio power-steering		OPT
Select/Aire air-conditioning	(a)	OPT
Deep-pile carpeting	(b)	OPT
Front bucket seats	(c)	
— with centre armrest		OPT
— with sports console/armrest	(c)	OPT
11-transistor push-button radio		OPT
7-transistor manual radio		OPT
Electric clock		OPT
Safety-bell warning light and front belt locking retractors		OPT

### PERFORMANCE EQUIPMENT

Power Disc brakes (front)		OPT
6-inch Mag, type sports road wheels		OPT
Heavy-duty battery		OPT
Limited-slip differential (10 cwt and 15 cwt) (e)		OPT
Heavy-duty protection package, comprising: heavy-duty air cleaner, engine stone-guard, heavy-duty mounting plates for rear shock absorbers		OPT
10 cwt. "Sedan Ride" Comprising Wheels 14" x 5JJ pressed steel, ventilated disc, safety rims, 5 stud mountings. Tyres 7.35 x 14 WSW 4 ply 6JJ. Black sidewall. Suspension 10 cwt. rating—coil springs front, 2-stage 6 leaf springs rear. GVW 4350 lb.—6 cylinder engine. GVW 4550 lb.—8 cylinder engine		OPT
Wheels and Tyres (10 cwt. only) 185 x 14 BSW Radial Ply 6JJ E770H14 RSW Wide oval Radial Ply 6JJ 7.35 x 14 BSW 6 ply 6JJ 7.35 x 14 WSW 4 ply 6JJ		OPT

### EXTERIOR/APPEARANCE ITEMS

Grand Sport rally pack		OPT
Special protection group, comprising: front bumper over-riders with black rubber inserts, full-length body-side mouldings with black vinyl inserts		OPT
Styled full wheel covers		OPT
Remote control styrod mirror (driv. side)		OPT
Laminated/graduated-tint windscreen		OPT

Notes: (a) Air-conditioning available only with 250 CID '6' and V8 engines. (b) Carpeting must be fitted with optional bucket seats. (c) Sports console must be fitted with optional floor-mounted transmissions and is not available with full-width seat. (d) Front seat belt stalks are provided with bucket seats. (e) Limited-slip differential on 15 cwt Van is available only with 6 cyl. engines.

## FORD FALCON VAN

